

Product Nameplate

Location of FCC/IC ID label

Honeywell XYR6000 WIRELESS HLAI TRANS

MODEL: STIW600-000-0000-V00-00-2N, MB-XXXX

SERIAL: 0745 C3013196003001

CUSTOMER ID:

CL I, DIV 2, GP A, B, C & D; CL II, DIV 2, GP F & G
CL I, Zone 2, Ex / AEx nA IIC, II 1-EP



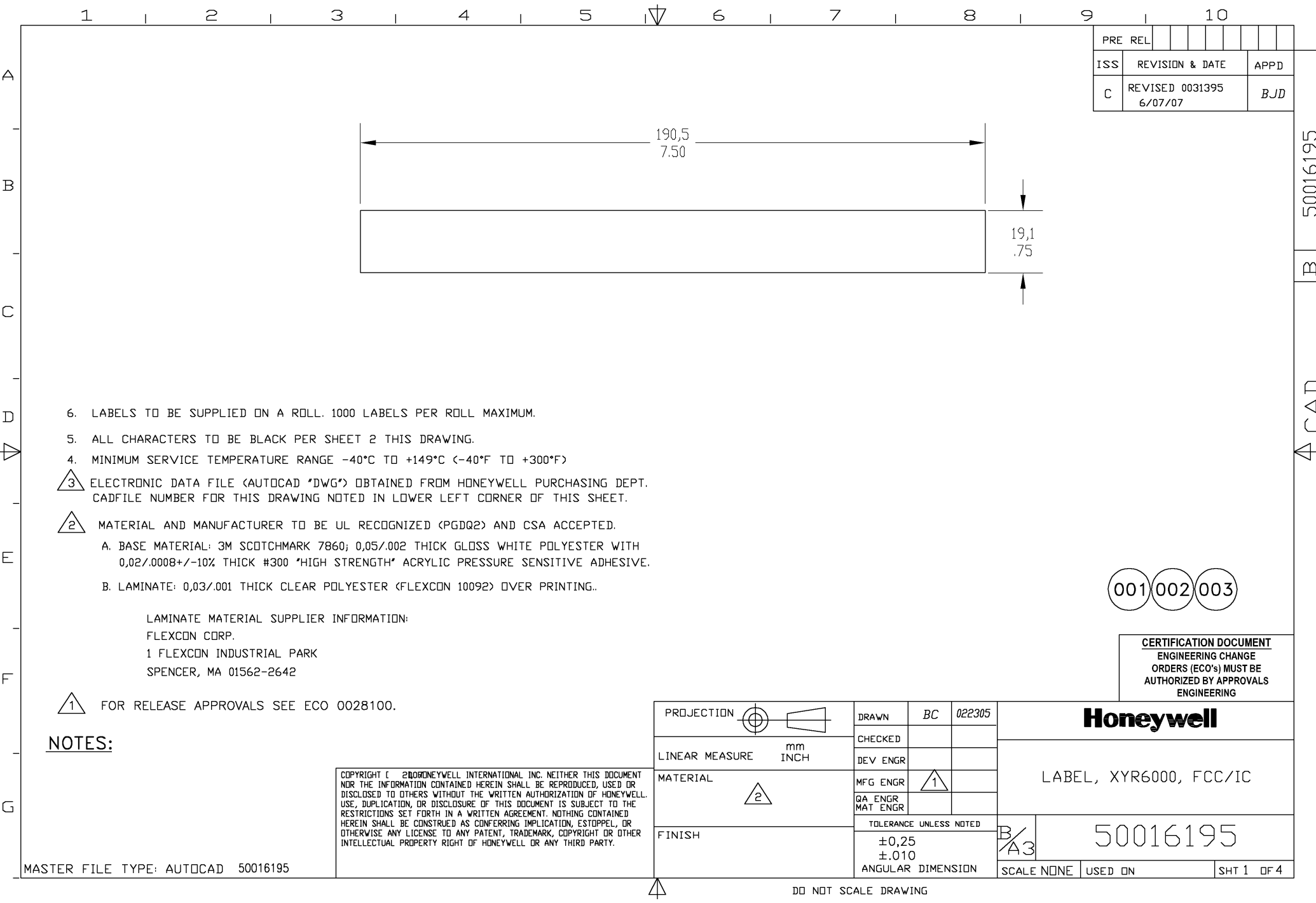
07.1903673

AMBIENT LIMITS -40 TO +85°C - ENCLOSURE TEMPERATURE
50025572-001 ISS. A ASSEMBLED IN USA FROM US AND IMPORTED

Honeywell

RF MOD: 50025034-001
FCC ID: S5750025034
IC: 5731-50025034

50025033-001
DSSS RADIO ASSY



PRE	REL								
ISS	REVISION & DATE							APPD	
C	REVISED 0031395 6/07/07							BJD	

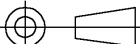


6. LABELS TO BE SUPPLIED ON A ROLL. 1000 LABELS PER ROLL MAXIMUM.
5. ALL CHARACTERS TO BE BLACK PER SHEET 2 THIS DRAWING.
4. MINIMUM SERVICE TEMPERATURE RANGE -40°C TO +149°C (-40°F TO +300°F)
- 3 ELECTRONIC DATA FILE (AUTOCAD "DWG") OBTAINED FROM HONEYWELL PURCHASING DEPT.
CADFILE NUMBER FOR THIS DRAWING NOTED IN LOWER LEFT CORNER OF THIS SHEET.
- 2 MATERIAL AND MANUFACTURER TO BE UL RECOGNIZED (PGDQ2) AND CSA ACCEPTED.
- A. BASE MATERIAL: 3M SCOTCHMARK 7860; 0,05/.002 THICK GLOSS WHITE POLYESTER WITH
0,02/.0008+/-10% THICK #300 "HIGH STRENGTH" ACRYLIC PRESSURE SENSITIVE ADHESIVE.
- B. LAMINATE: 0,03/.001 THICK CLEAR POLYESTER (FLEXCON 10092) OVER PRINTING..

LAMINATE MATERIAL SUPPLIER INFORMATION:
FLEXCON CORP.
1 FLEXCON INDUSTRIAL PARK
SPENCER, MA 01562-2642

1 FOR RELEASE APPROVALS SEE ECO 0028100.

NOTES:

COPYRIGHT (C) 2000 HONEYWELL INTERNATIONAL INC. NEITHER THIS DOCUMENT NOR THE INFORMATION CONTAINED HEREIN SHALL BE REPRODUCED, USED OR DISCLOSED TO OTHERS WITHOUT THE WRITTEN AUTHORIZATION OF HONEYWELL. USE, DUPLICATION, OR DISCLOSURE OF THIS DOCUMENT IS SUBJECT TO THE RESTRICTIONS SET FORTH IN A WRITTEN AGREEMENT. NOTHING CONTAINED HEREIN SHALL BE CONSTRUED AS CONFERRING IMPLICATION, ESTOPPEL, OR OTHERWISE ANY LICENSE TO ANY PATENT, TRADEMARK, COPYRIGHT OR OTHER INTELLECTUAL PROPERTY RIGHT OF HONEYWELL OR ANY THIRD PARTY.

PROJECTION				DRAWN	BC	022305	Honeywell			
LINEAR MEASURE		mm INCH		CHECKED						
MATERIAL				DEV ENGR			LABEL, XYR6000, FCC/IC			
				MFG ENGR						
				QA ENGR MAT ENGR						
FINISH				TOLERANCE UNLESS NOTED			B/A3	50016195		
				±0,25 ±.010						
				ANGULAR DIMENSION						
				SCALE NONE		USED ON		SHT 1 OF 4		

MASTER FILE TYPE: AUTOCAD 50016195

DO NOT SCALE DRAWING

1 | 2 | 3 | 4 | 5 | 6 | 7 | 8 | 9 | 10

50016195

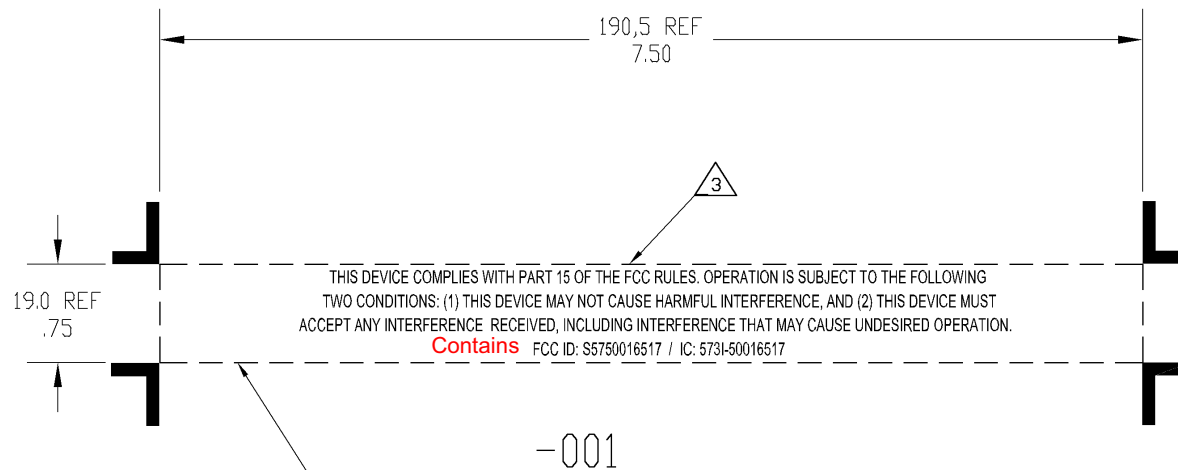
B

CAD

E

F

G



DASHED LINES ARE FOR REFERENCE AND
ARE NOT PART OF ARTWORK

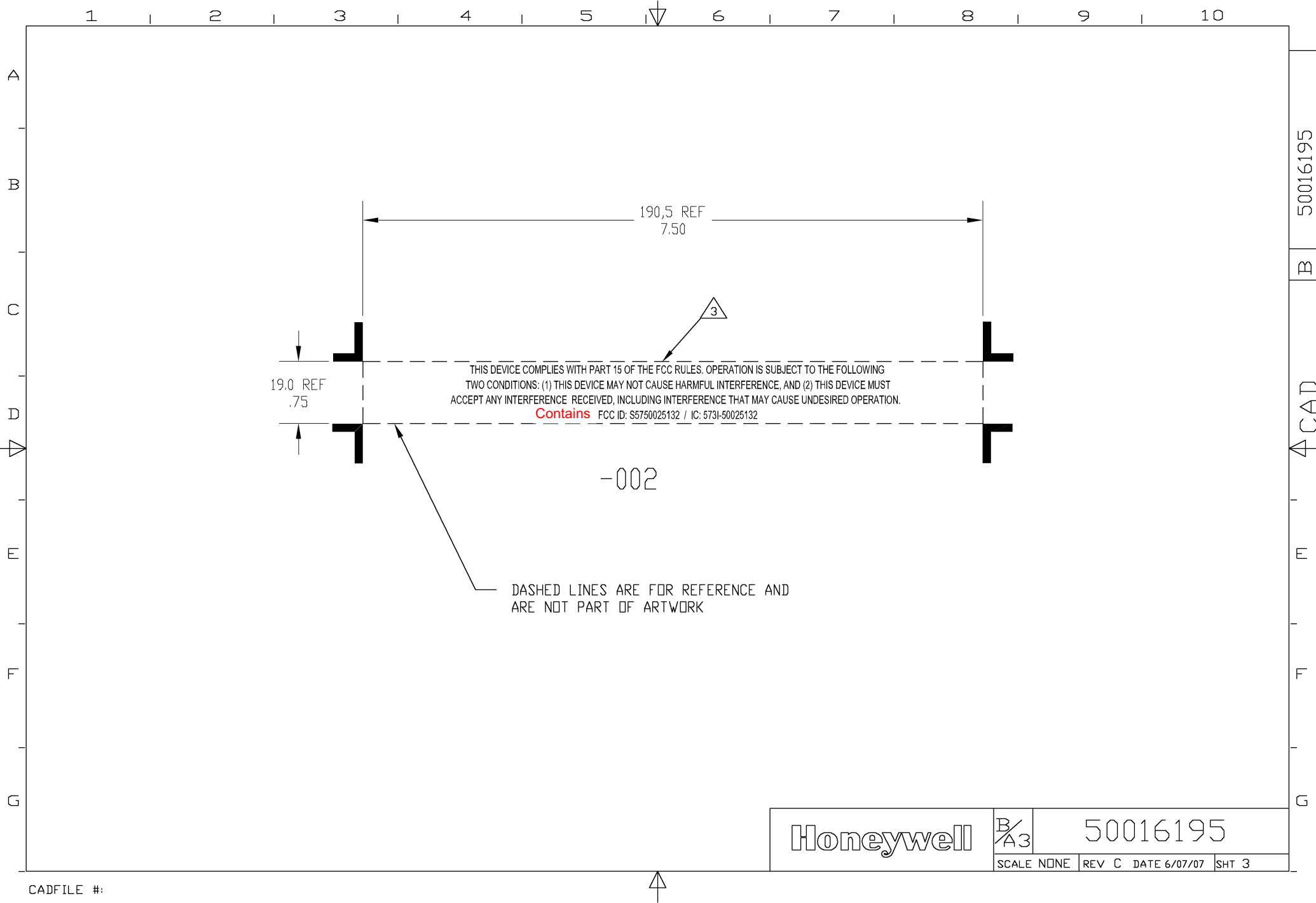
Honeywell

B/
A3

50016195

SCALE NONE REV C DATE 6/07/07 SHT 2

CADFILE #:



1 | 2 | 3 | 4 | 5 | 6 | 7 | 8 | 9 | 10

50016195

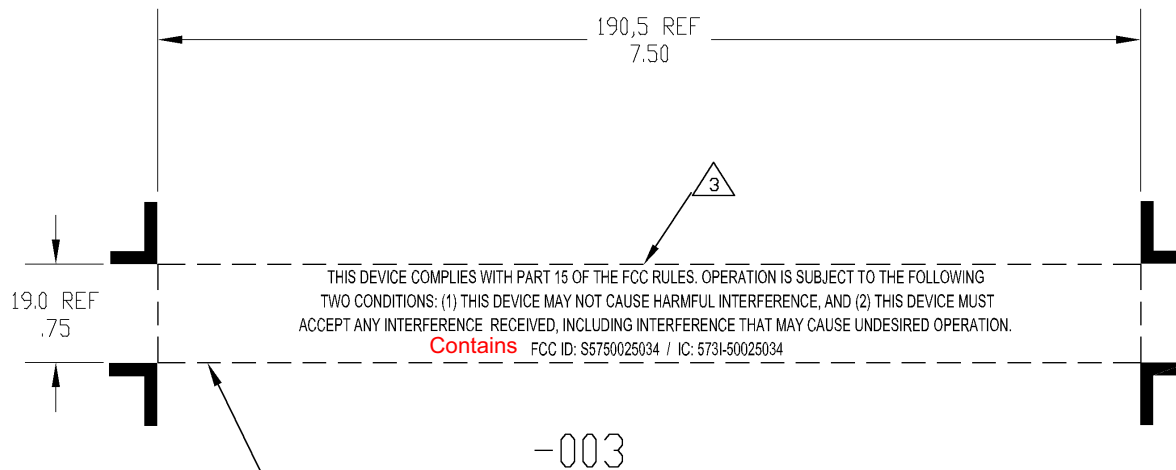
B

CAD

E

F

G



DASHED LINES ARE FOR REFERENCE AND
ARE NOT PART OF ARTWORK

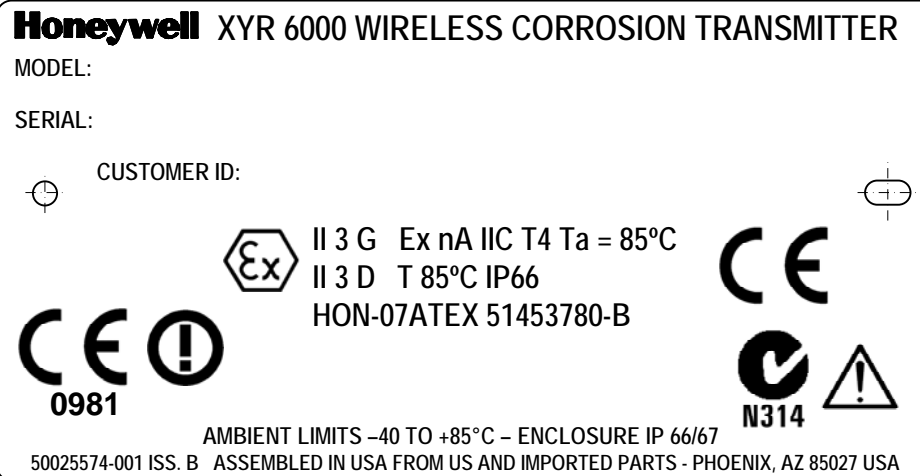
Honeywell

B/A3

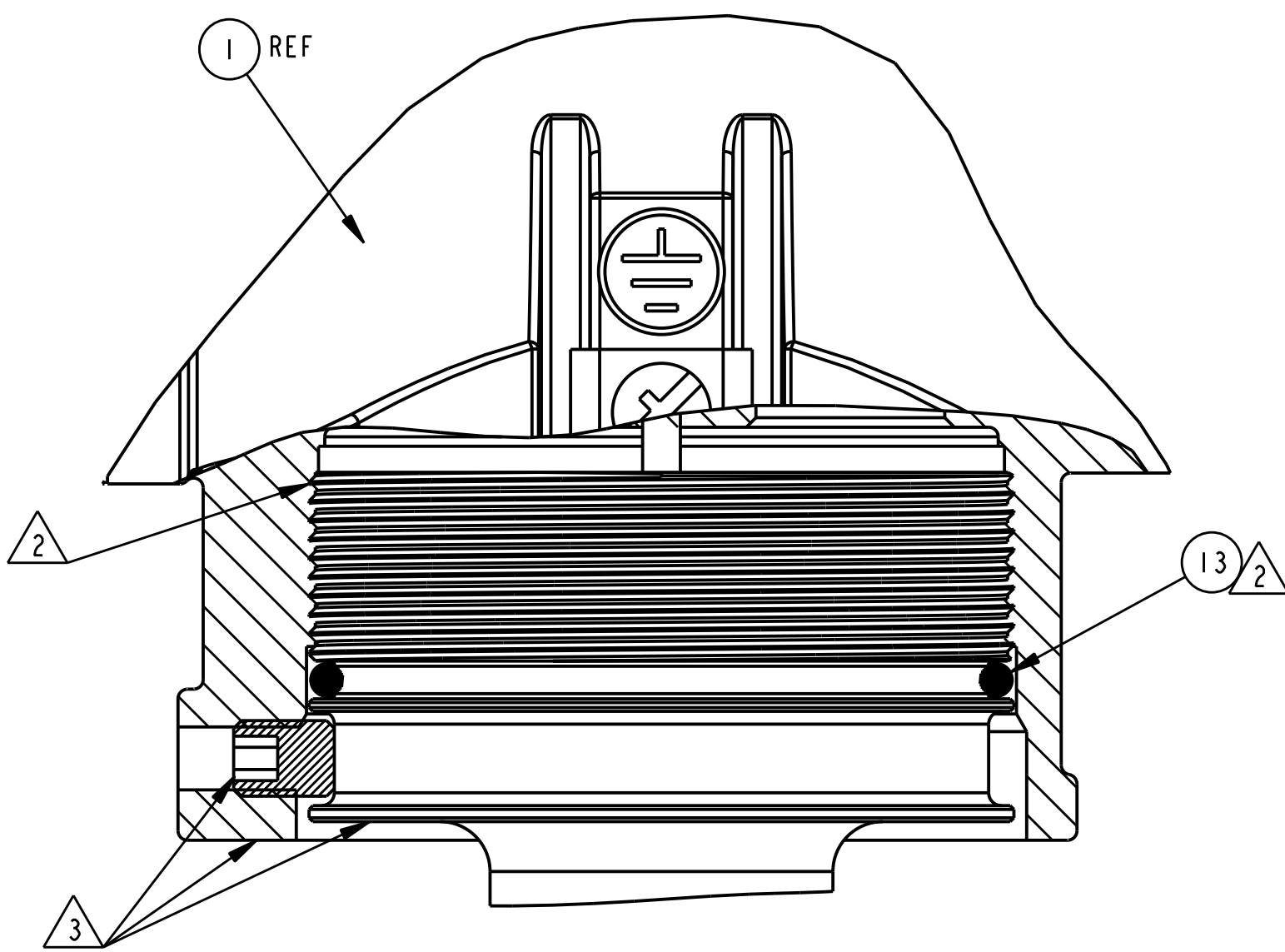
50016195

SCALE NONE REV C DATE 6/07/07 SHT 4

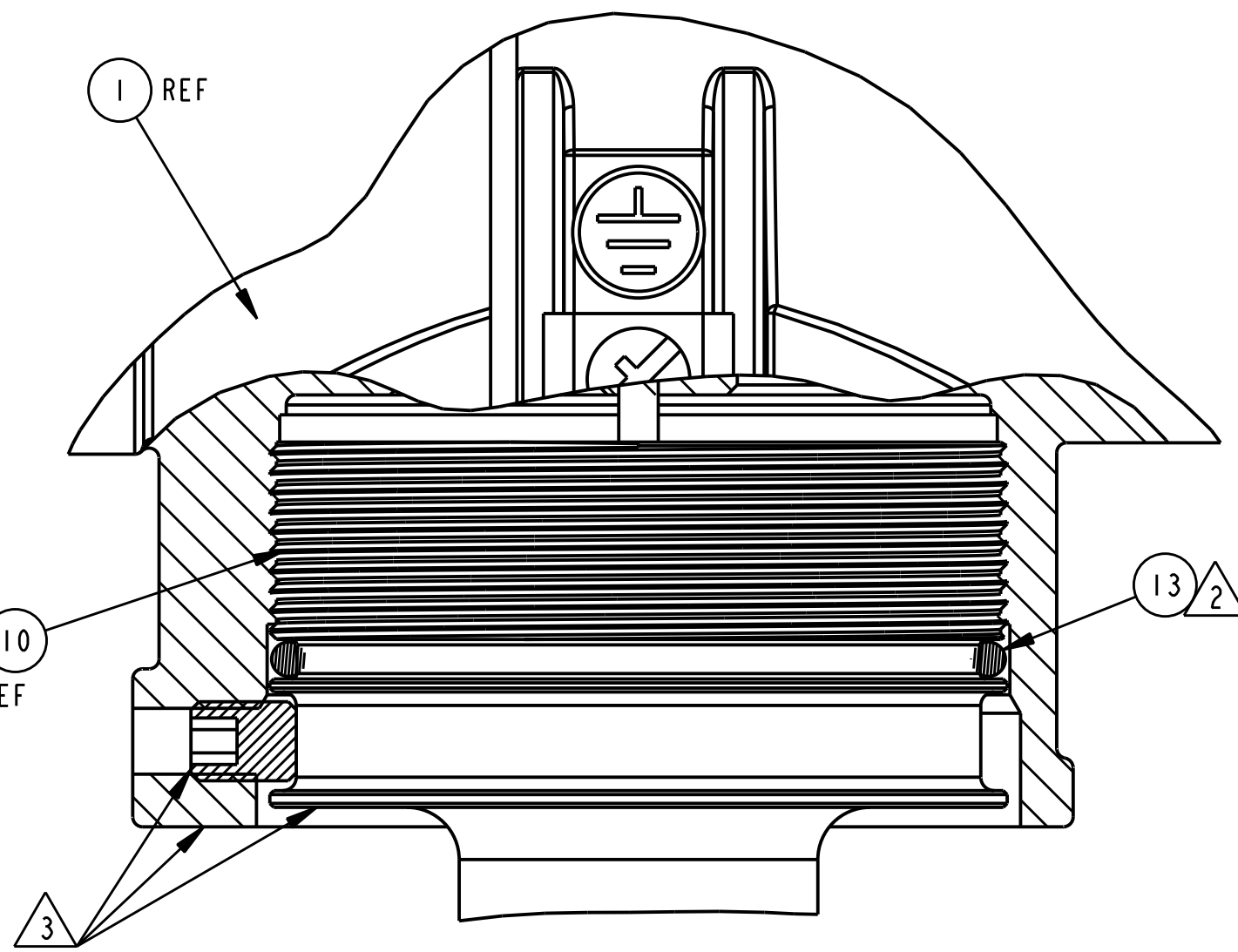
CADFILE #:



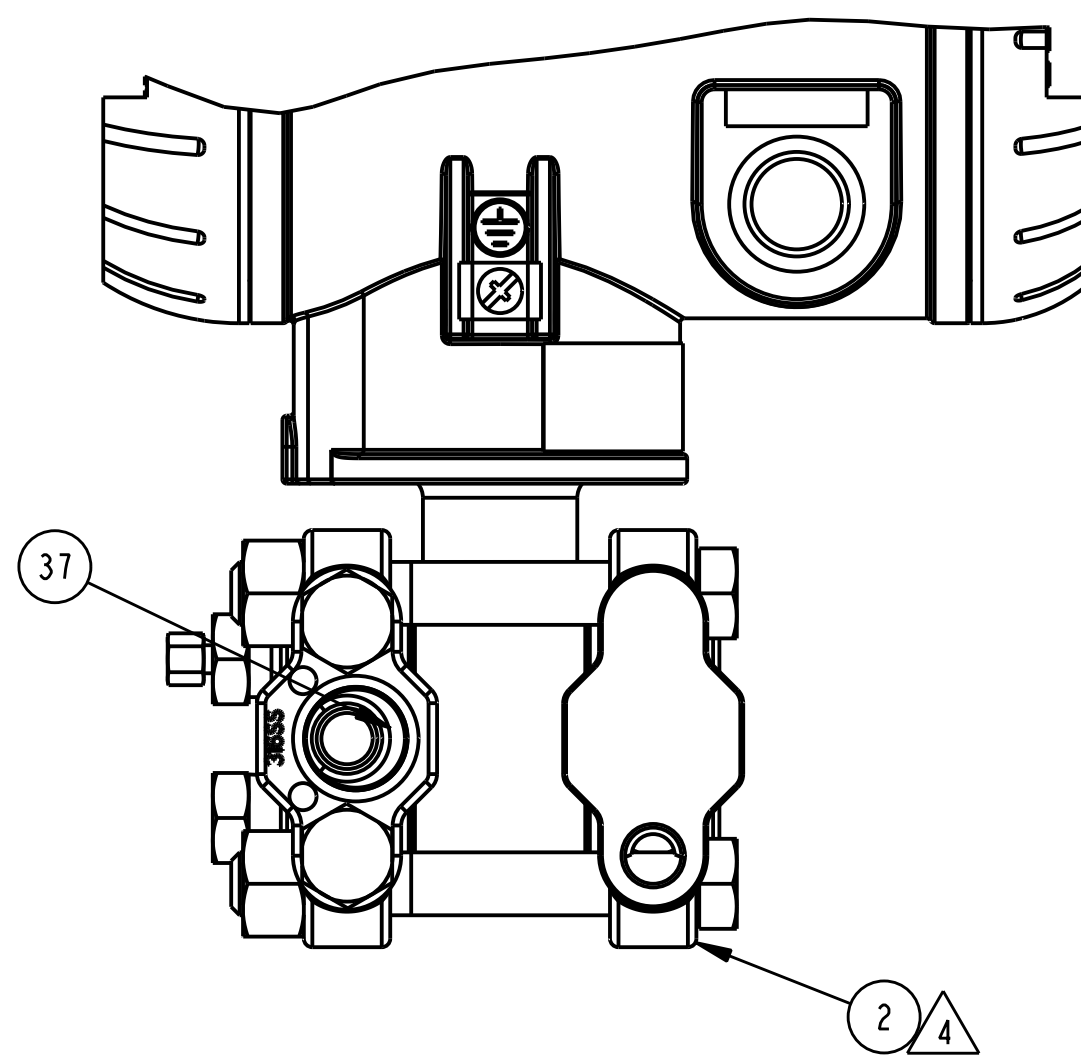
50025574-001
XYR 6000 NAMEPLATE
R100-CORROSION
3N, HON-ATEX
fmk 11/12/2007



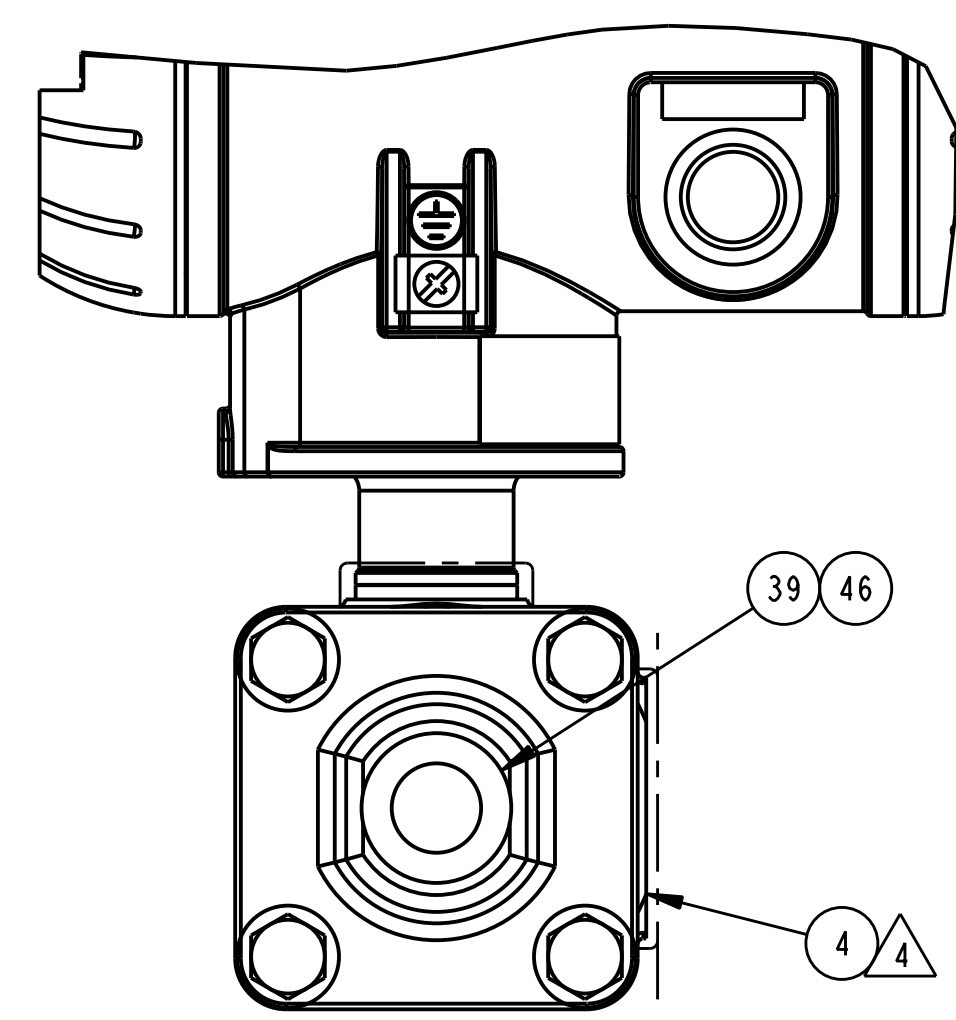
TYPICAL FOR ALL PRESSURE ASSEMBLIES
SCALE: 2.000



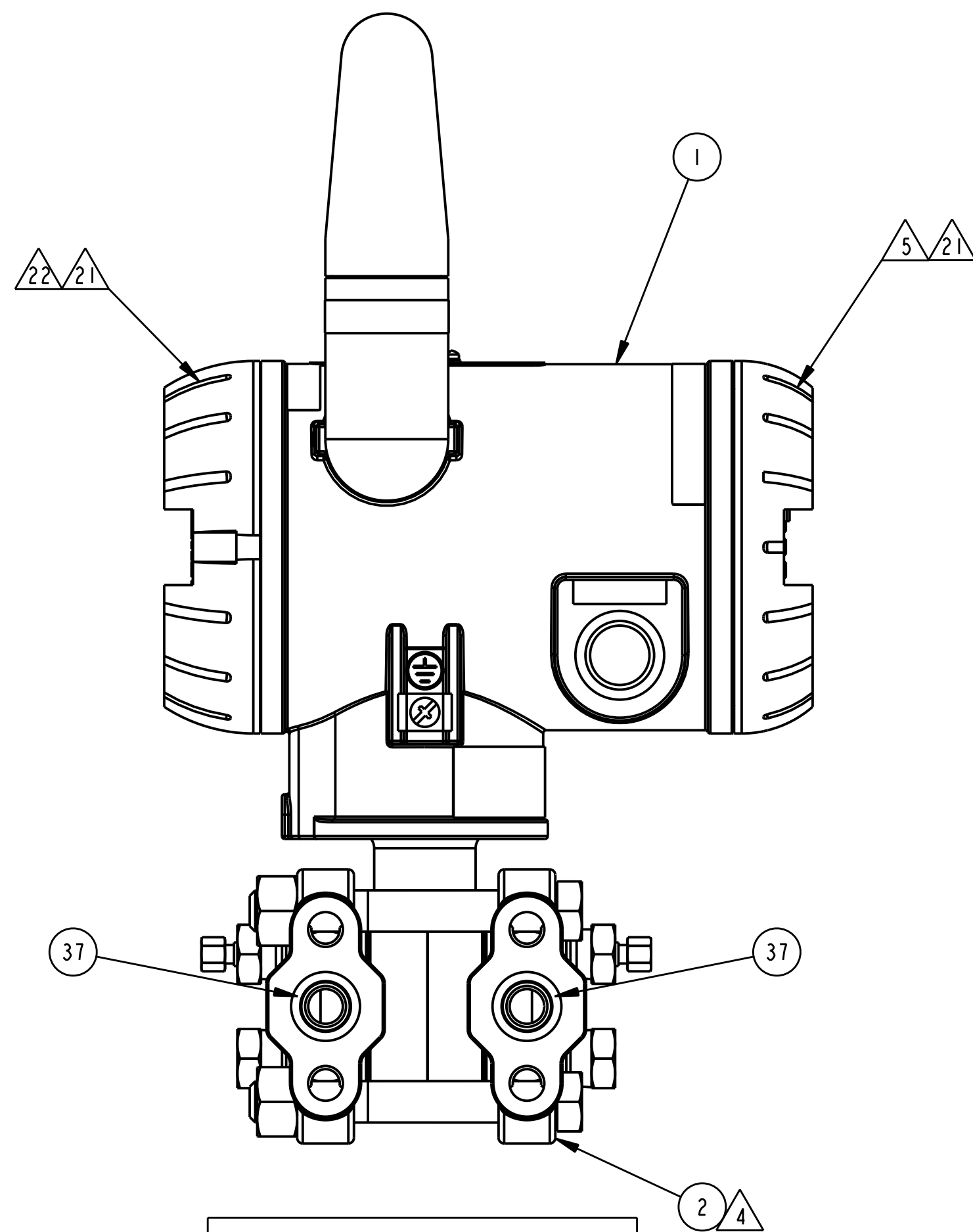
TYPICAL FOR ALL
CORROSION / HLAI / REMOTE ASSEMBLIES
SCALE: 2.000



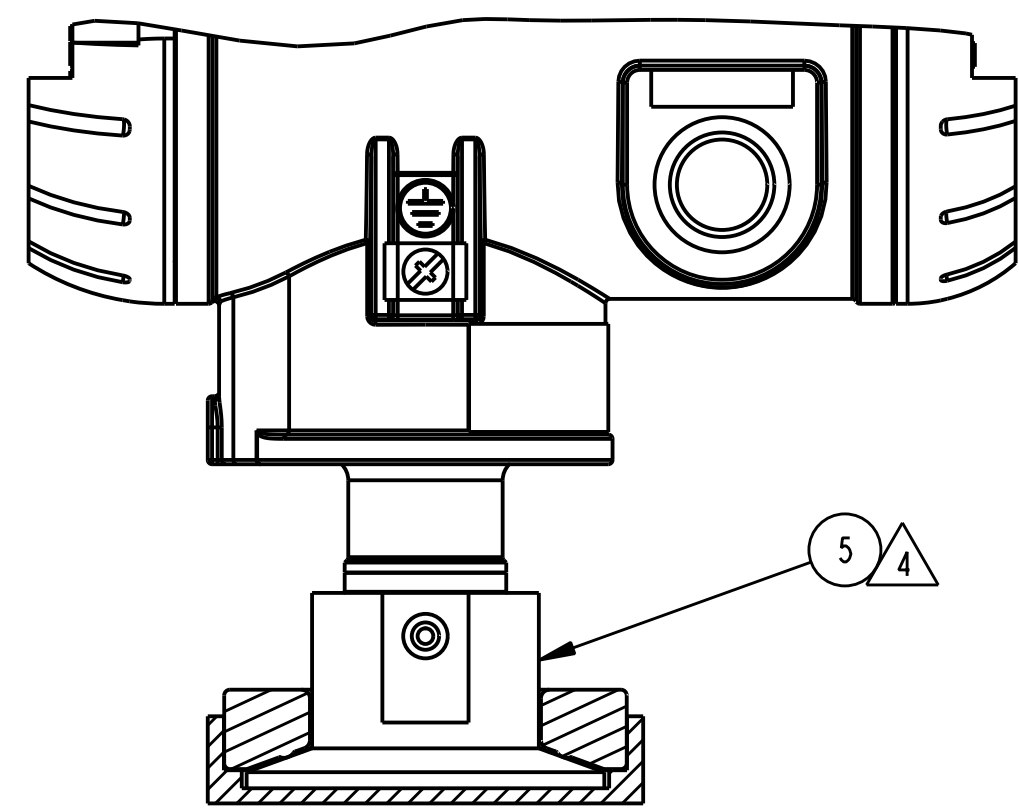
DHGP/I



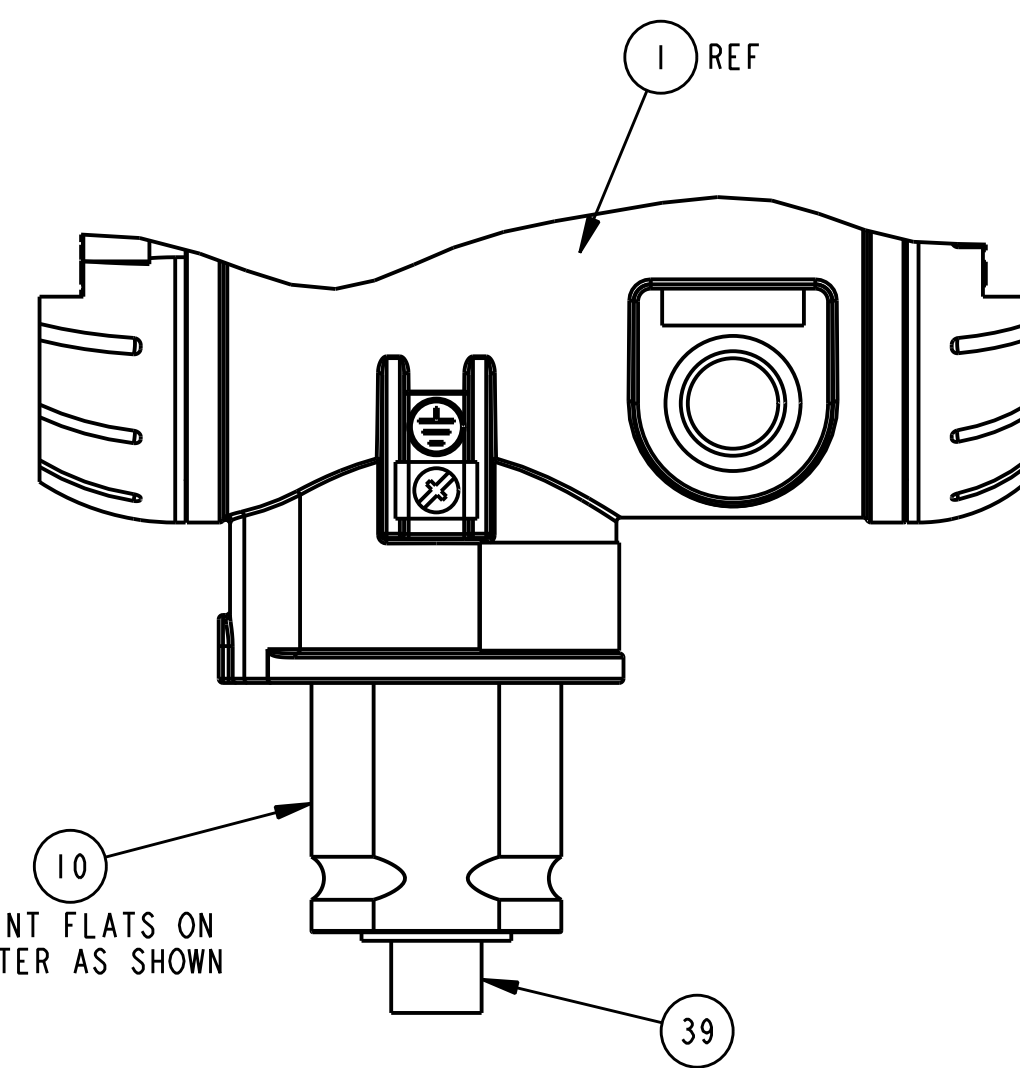
GP/I, AP/I
(BOLTED HEADS)



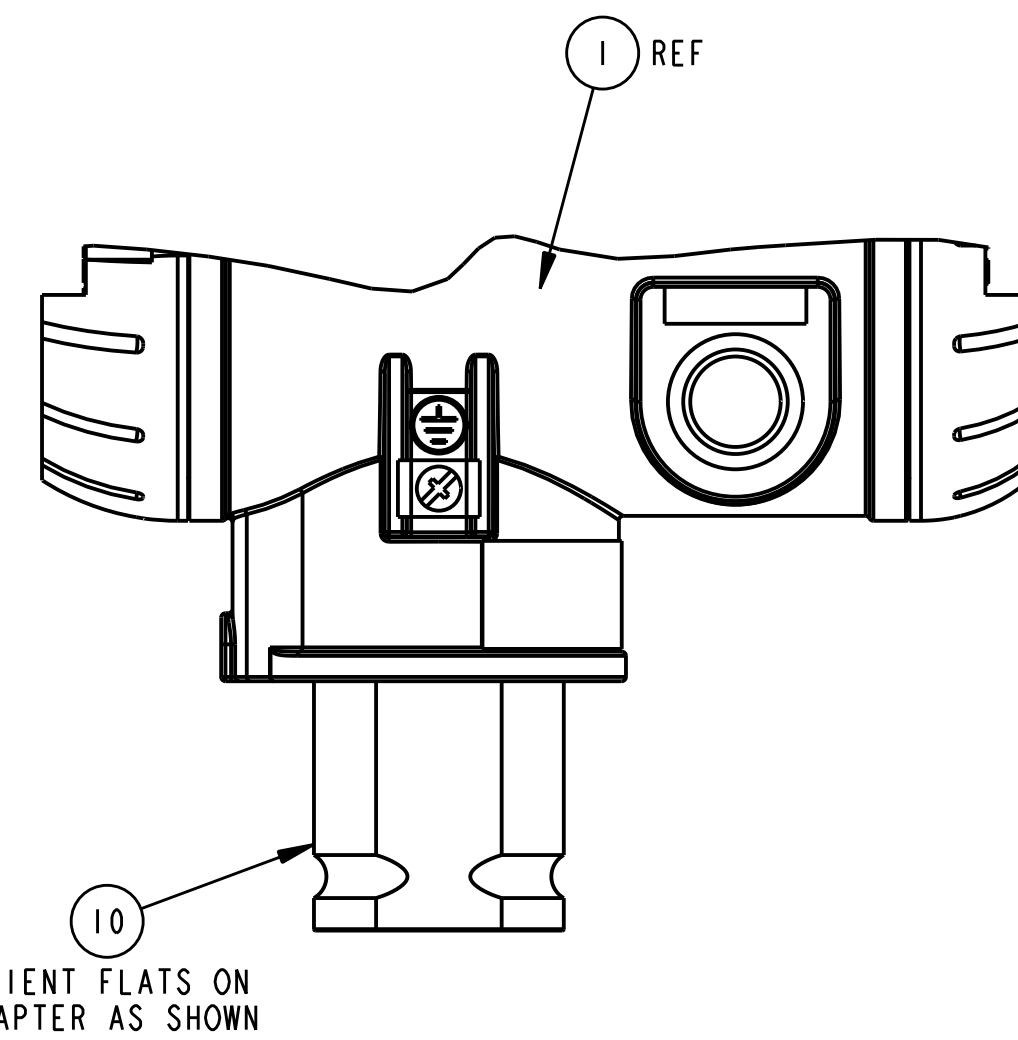
DP/I
(SHOWN WITH ELBOW ANTENNA)



SANITARY



INTEGRAL TEMPERATURE
23

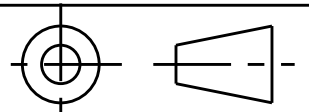




CORROSION / HLAI / REMOTE TEMPERATURE

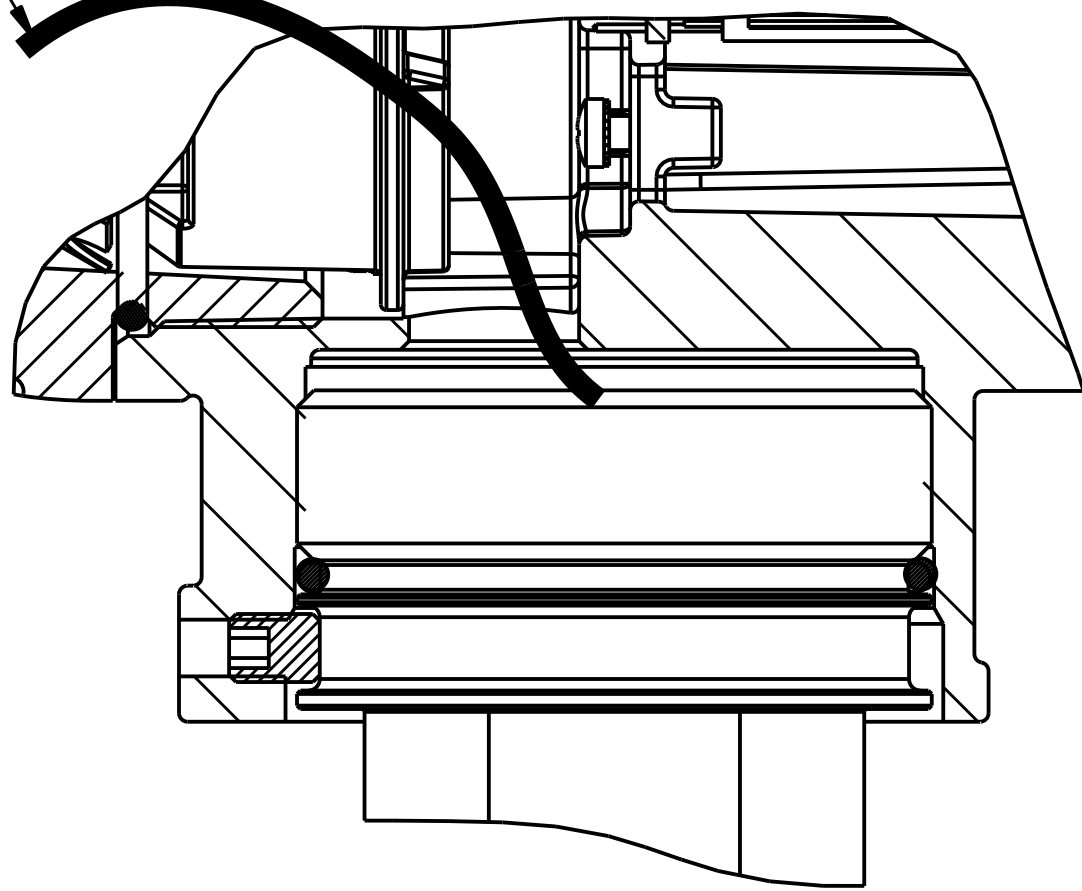
NOTES: (SEE SHEET #6 FOR NOTES)

MASTER FILE TYPE: PRO/ENGINEER

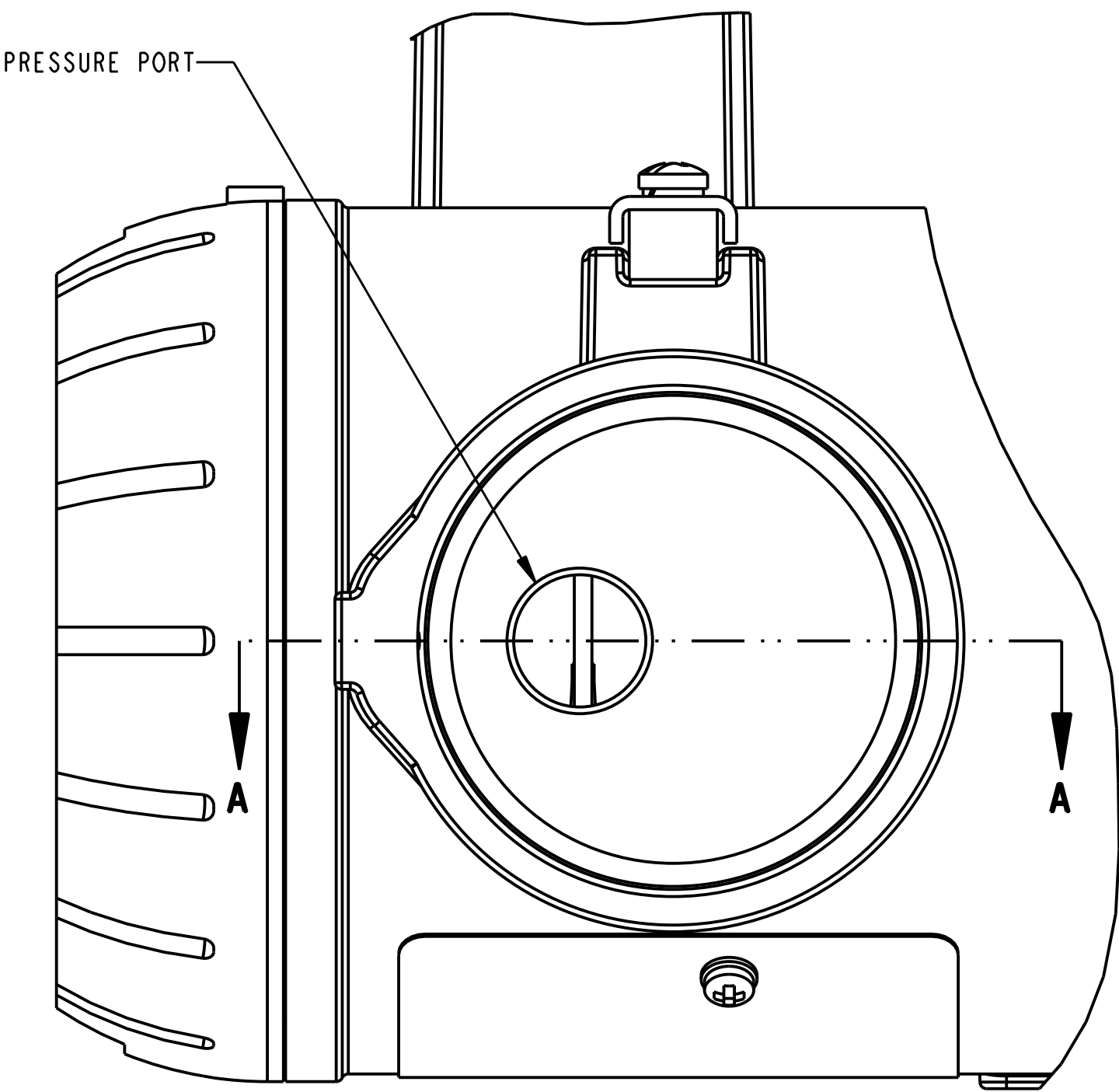
UNPUBLISHED. HONEYWELL CONFIDENTIAL. TRADE SECRET. IN THE EVENT OF PUBLICATION THE FOLLOWING NOTICE SHALL APPLY: COPYRIGHT 2007. HONEYWELL INTERNATIONAL INC. ALL RIGHTS RESERVED. THIS DOCUMENT IS PROPRIETARY INFORMATION OF HONEYWELL INTERNATIONAL, INC.. NEITHER THIS DOCUMENT NOR THE INFORMATION CONTAINED HEREIN SHALL BE REPRODUCED, USED OR DISCLOSED TO OTHERS WITHOUT THE WRITTEN AUTHORIZATION OF HONEYWELL. USE, DUPLICATION, OR DISCLOSURE OF THIS DOCUMENT IS SUBJECT TO THE RESTRICTIONS SET FORTH IN A WRITTEN AGREEMENT. NOTHING CONTAINED HEREIN SHALL BE CONSTRUED AS CONFERRING BY IMPLICATION, ESTOPPEL, OR OTHERWISE ANY LICENSE TO ANY PATENT TRADEMARK, COPYRIGHT OR OTHER INTELLECTUAL PROPERTY RIGHT OF HONEYWELL OR ANY THIRD PARTY.

PROJECTION 	DRAWN	WF	07/20/06	Honeywell		
	CHECKED					
LINEAR MEASURE: $\frac{\text{mm}}{\text{IN}}$	DEV ENGR			MOA, TRANSMITTER		
MATERIAL	MFG ENGR					
	QA ENGR					
	MAT ENGR					
FINISH	TOLERANCE UNLESS NOTED				50019774	
	ANGULAR DIMENSION					
				SCALE: NONE		

CONNECTS TO J5 ON SENSOR PWA
(PART OF 17)
SEE DETAIL "A"
ON SHEET #3



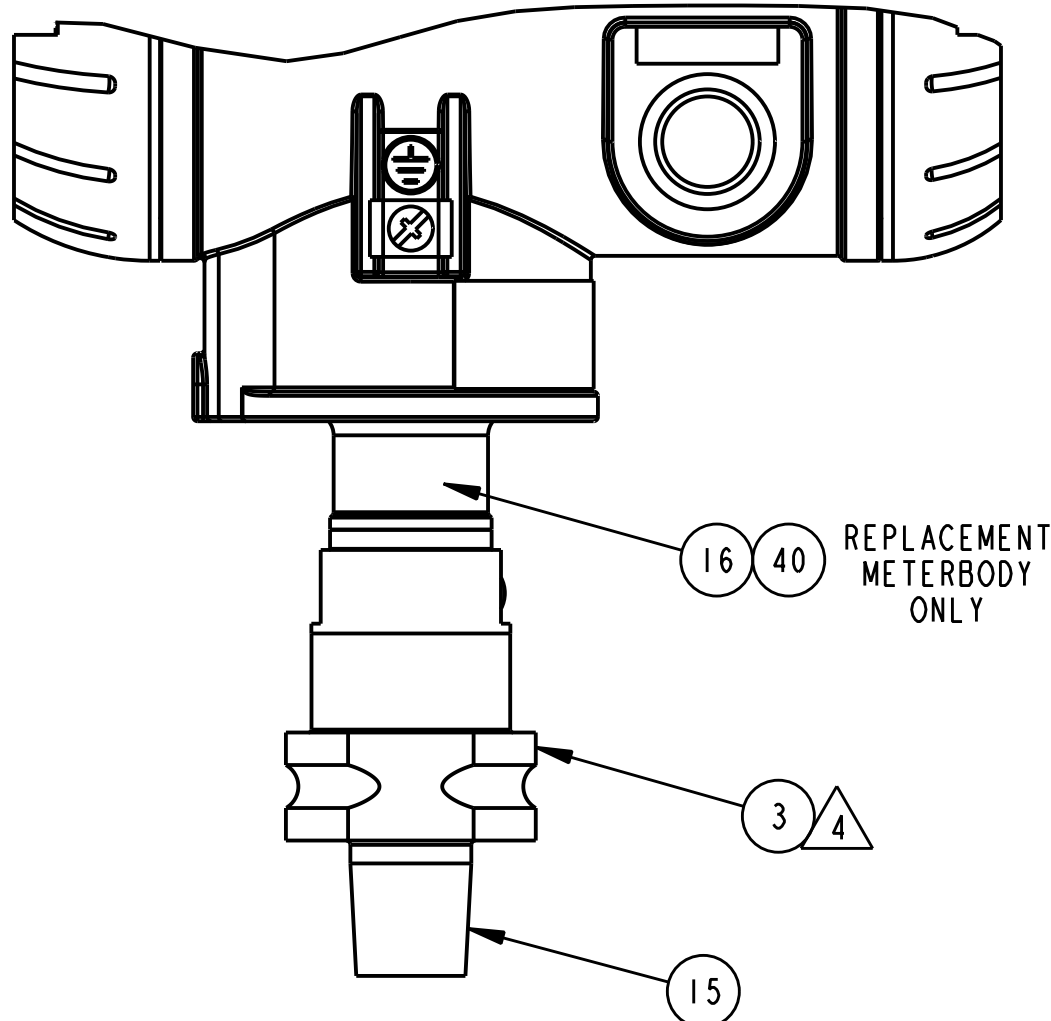
SECTION A-A



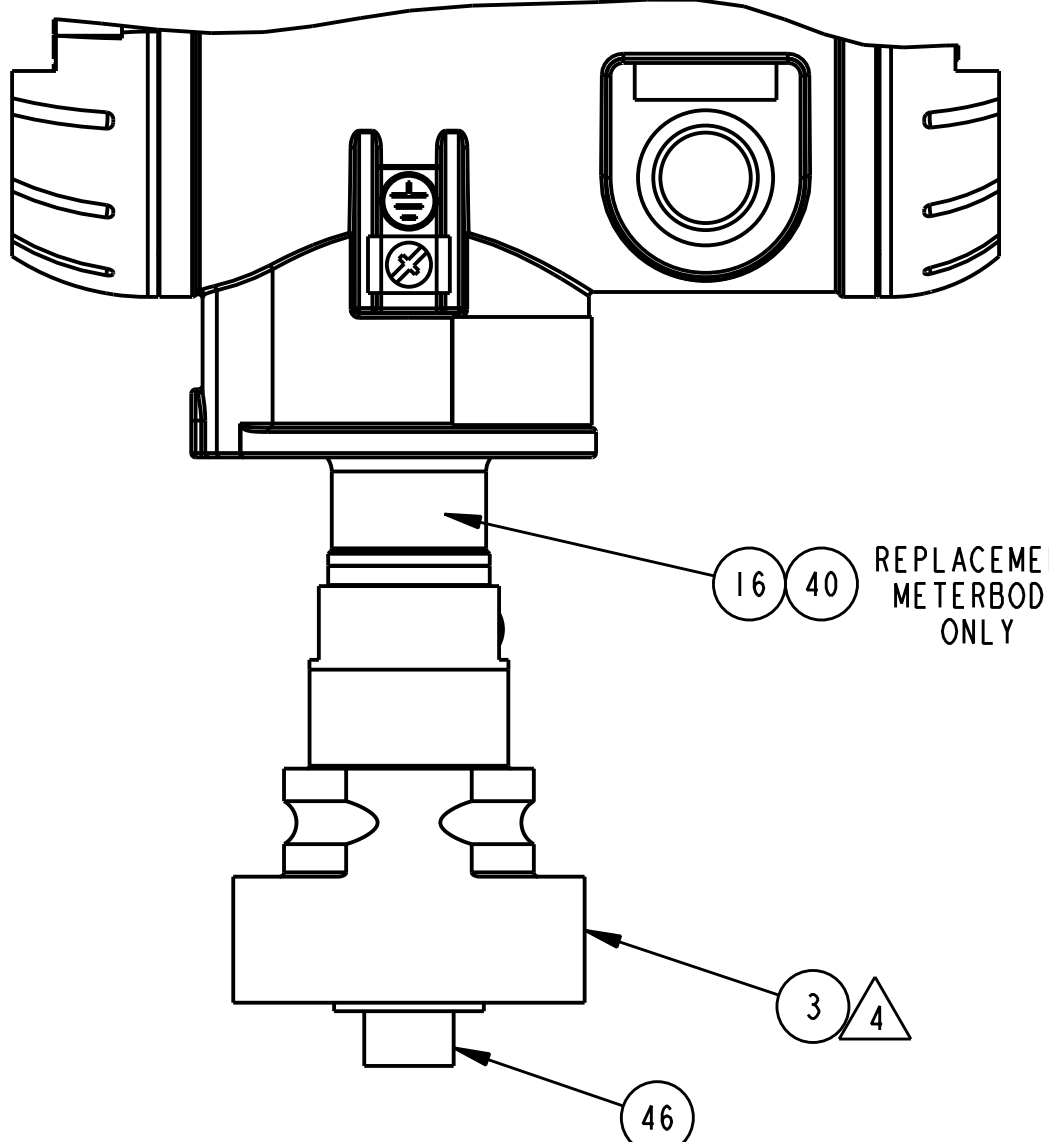
PARTIAL BOTTOM VIEW OF HOUSING ASSEMBLY
(METERBODY OMITTED IN THIS VIEW FOR CLARITY)

APPLICABLE FOR
PRESSURE TRANSMITTERS ONLY

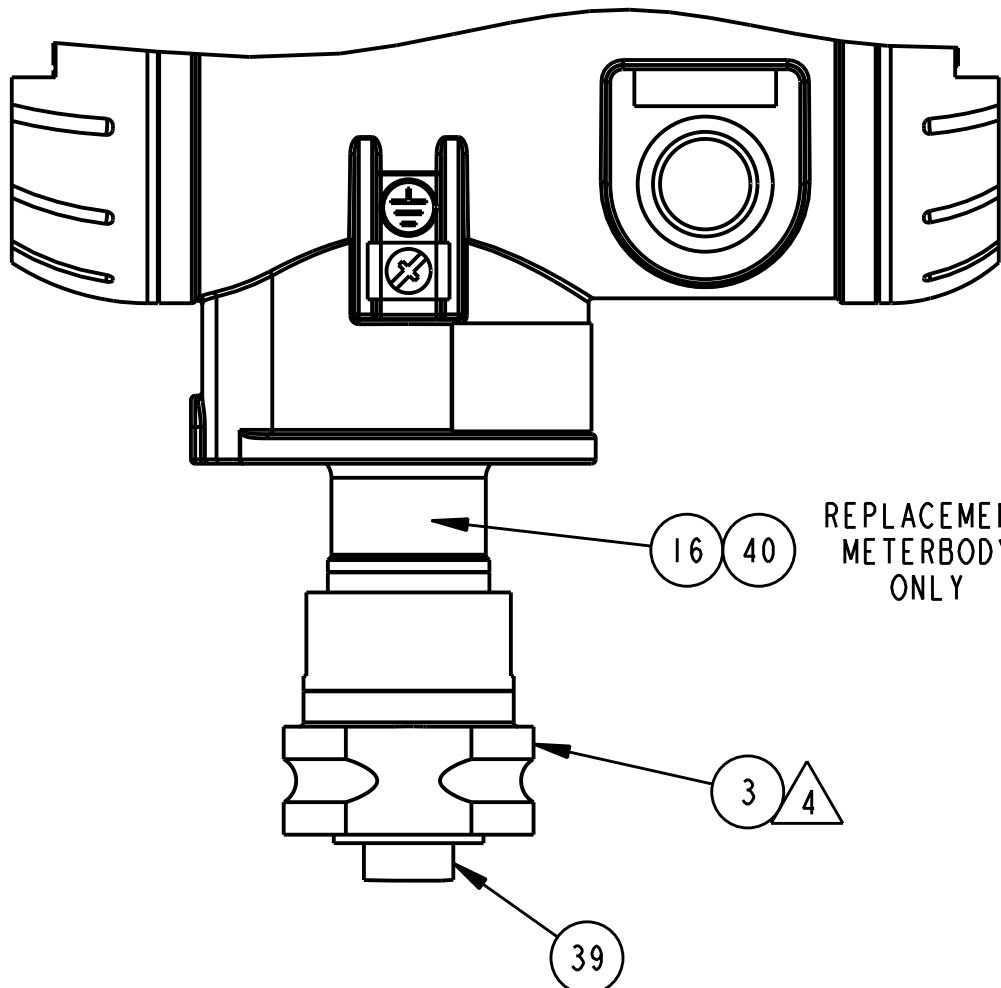
NOTES: (SEE SHEET #6 FOR NOTES)



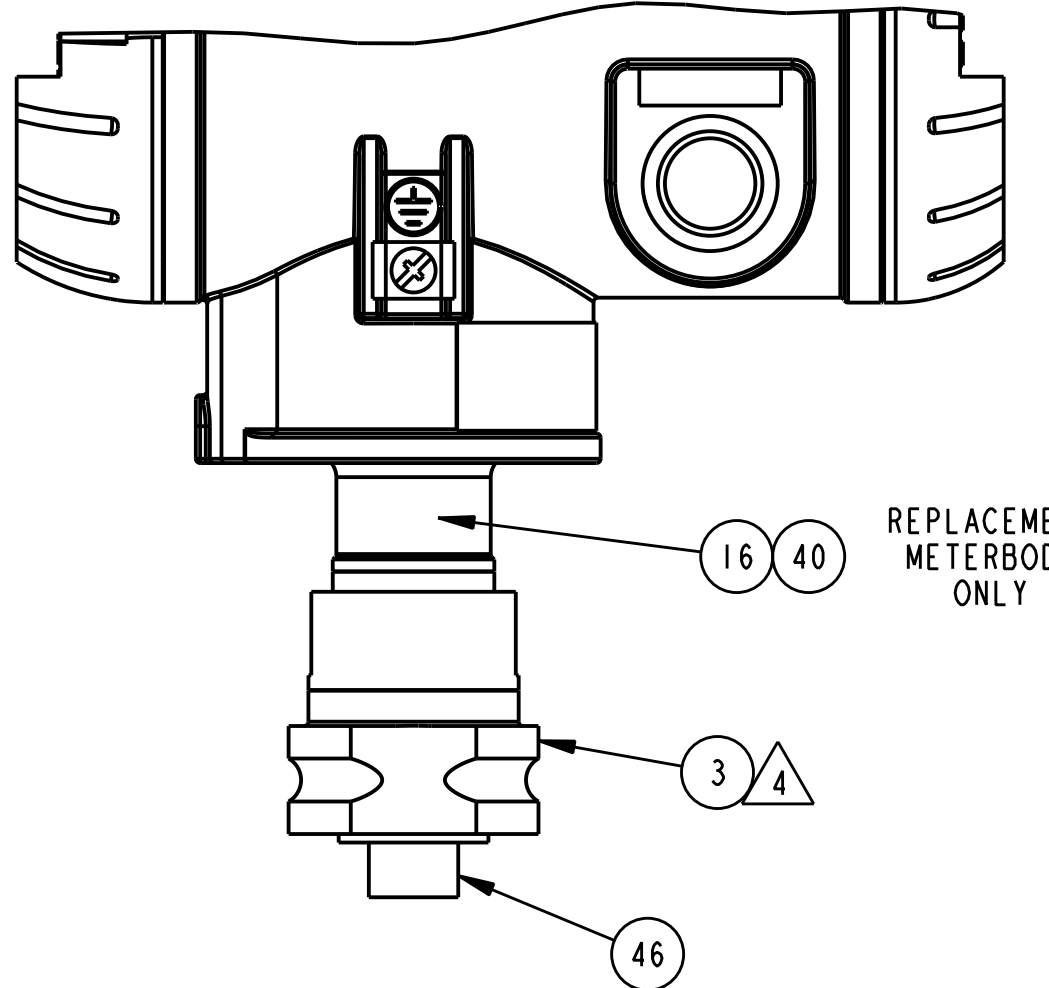
1/2" NPTF MALE



DIN 19213



1/2" NPTF FEMALE



9/16-18 FEMALE
(AMINCO)

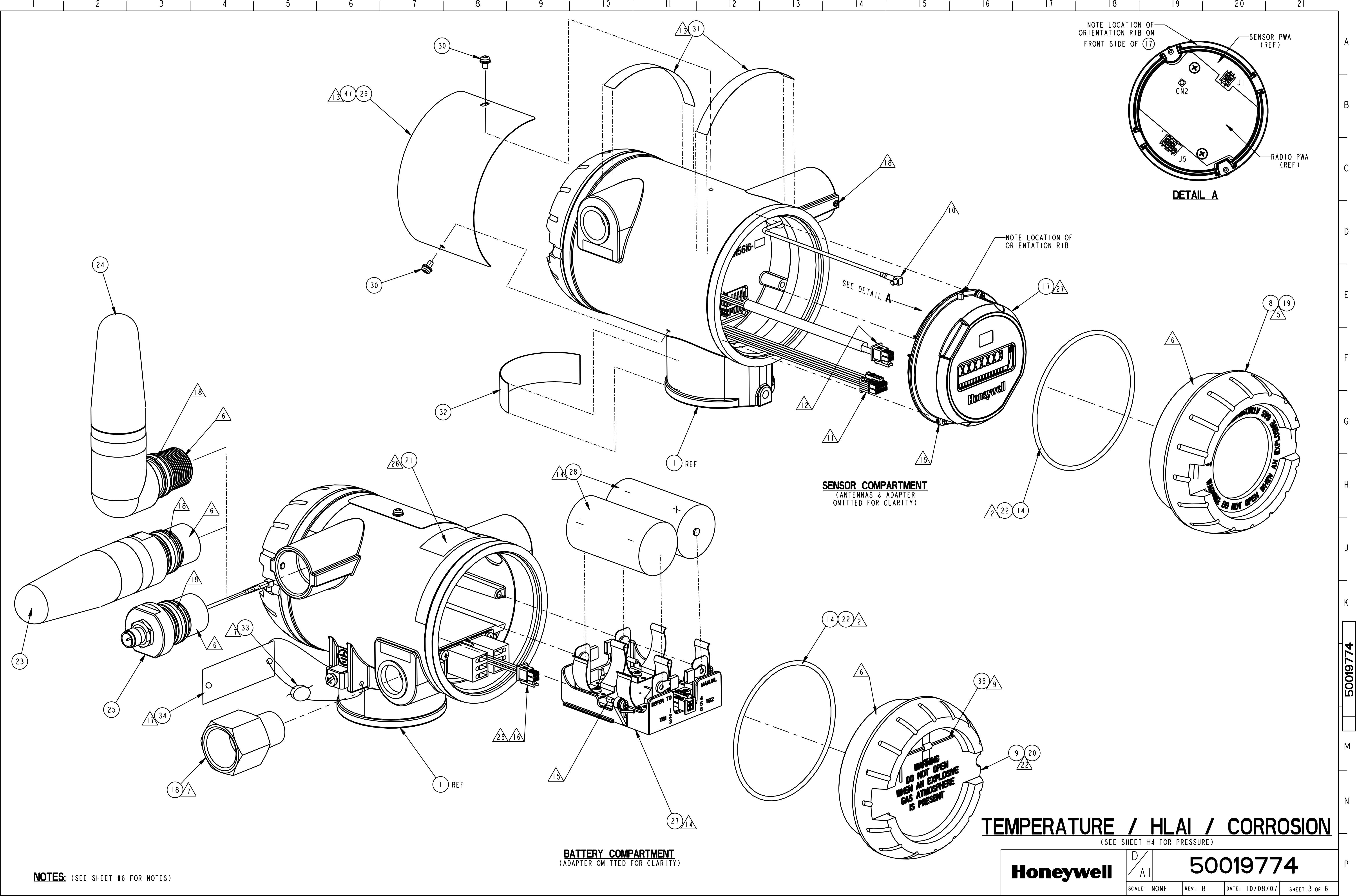
LGPI LAPI

Honeywell

D/AI

50019774

SCALE: NONE REV: B DATE: 10/08/07 SHEET: 2 OF 6



NOTES: (SEE SHEET #6 FOR NOTES)

BATTERY COMPARTMENT
(ADAPTER OMITTED FOR CLARITY)

SENSOR COMPARTMENT
(ANTENNAS & ADAPTER
OMITTED FOR CLARITY)

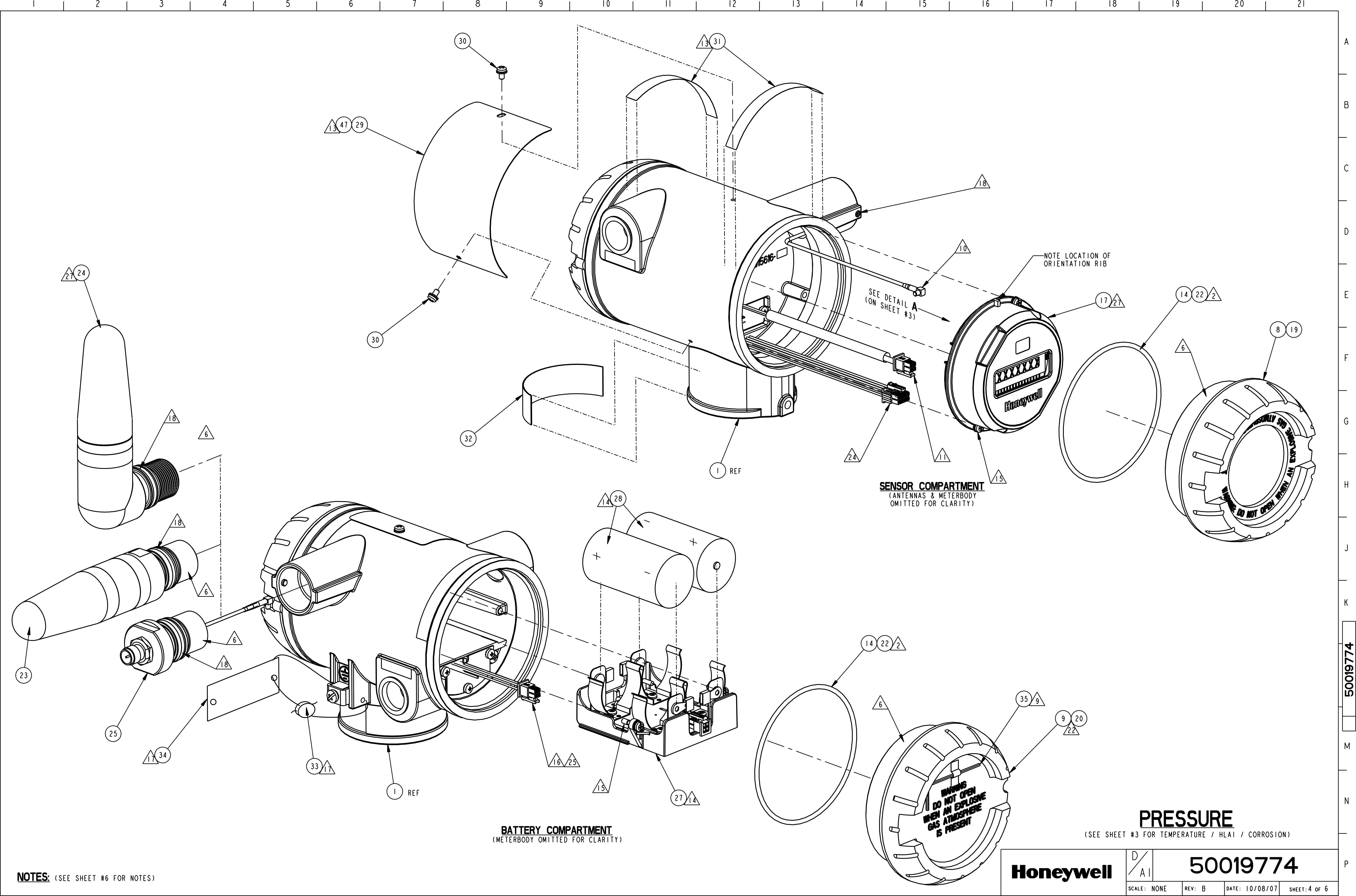
TEMPERATURE / HLAI / CORROSION
(SEE SHEET #4 FOR PRESSURE)

Honeywell

D
AI

50019774

SCALE: NONE REV: B DATE: 10/08/07 SHEET: 3 OF 6



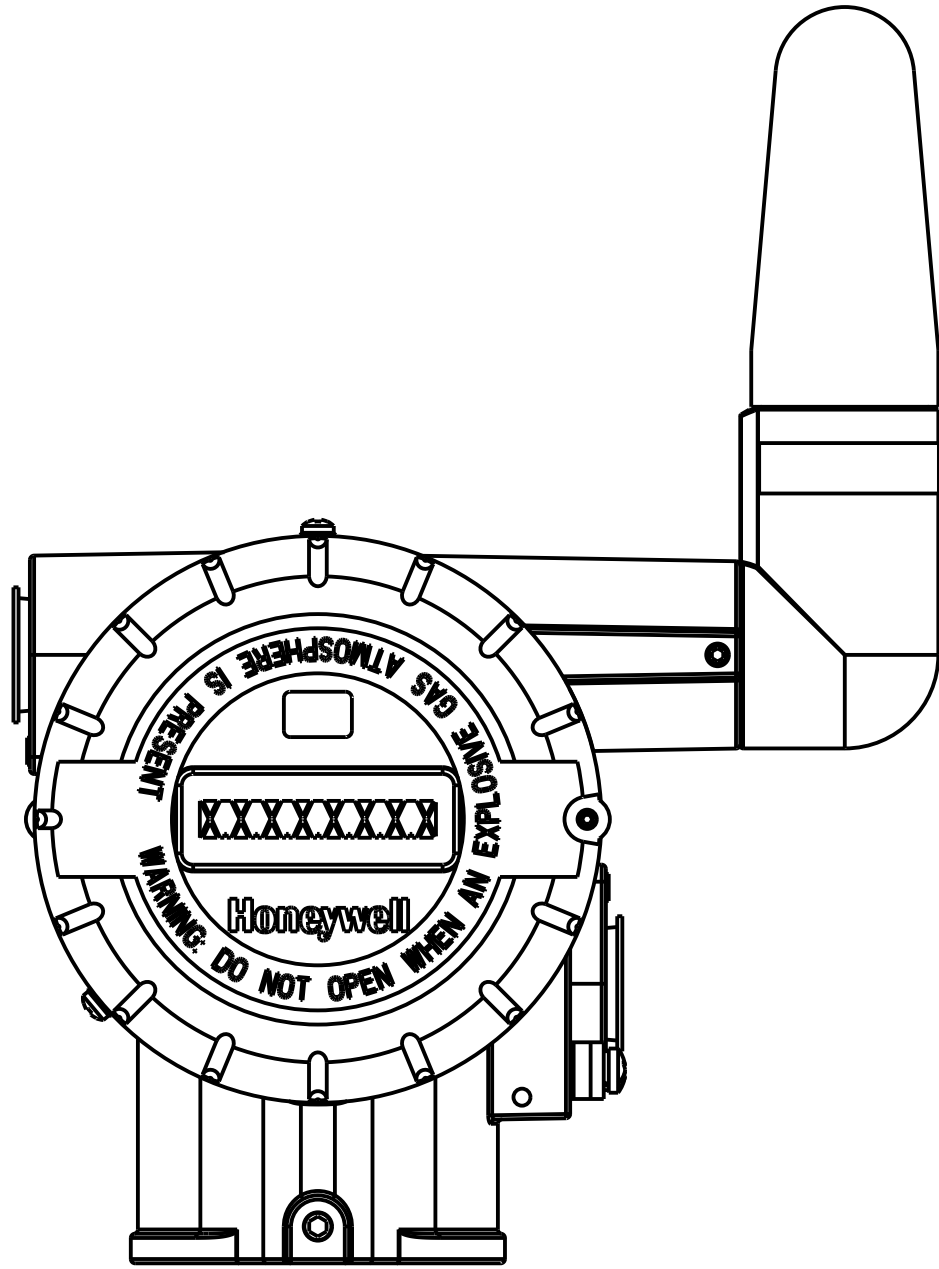
NOTES: (SEE SHEET #6 FOR NOTES)

Honeywell

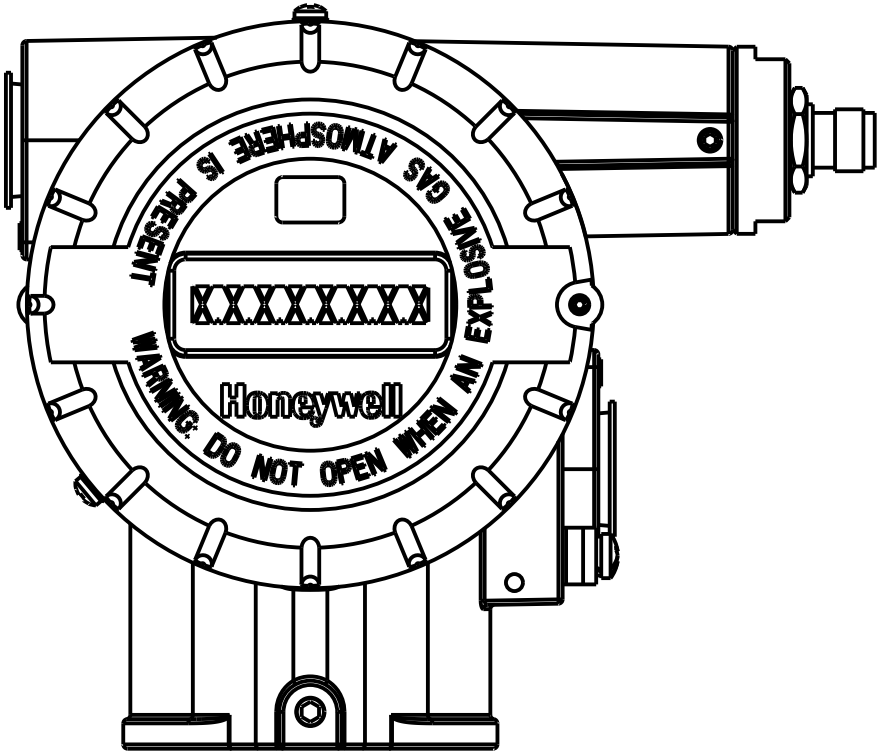
D/AI

50019774

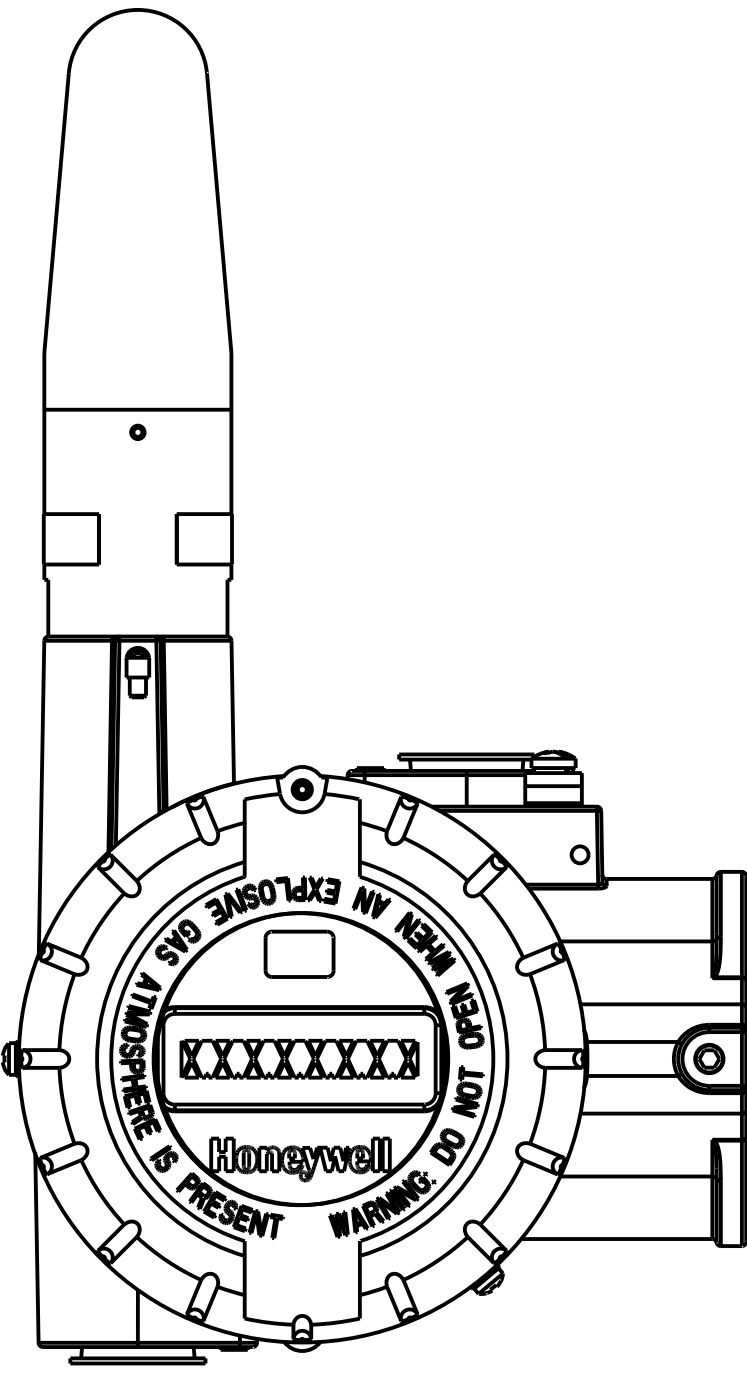
SCALE: NONE REV: B DATE: 10/08/07 SHEET: 4 OF 6



ELBOW ANTENNA / DISPLAY ASSEMBLY ORIENTATION
(PROCESS INTERFACE OMITTED FOR CLARITY)



REMOTE ANTENNA ADAPTER / DISPLAY ASSEMBLY ORIENTATION
(PROCESS INTERFACE OMITTED FOR CLARITY)



STRAIGHT ANTENNA / DISPLAY ASSEMBLY ORIENTATION
(PROCESS INTERFACE OMITTED FOR CLARITY)



28. INSTALL SPECIFICATION PLATE AROUND ADAPTER WITH "LOGO" ORIENTED UPRIGHT.

SPECIFICATION PLATE (40) TO BE USED ON TRANSMITTERS WITH A MAXIMUM WORKING PRESSURE OF LESS THAN 200 BAR (2900 PSI).

SPECIFICATION PLATE (16) TO BE USED ON TRANSMITTERS WITH A MAXIMUM WORKING PRESSURE GREATER THAN OR EQUAL TO 200 BAR (2900 PSI).

27 ORIENT ELECTRONICS MODULE ASSEMBLY 17 BASED ON ANTENNA CONFIGURATION AS SHOWN ON SHEET #5.

26 AFFIX WIRE WARNING LABEL (21) TO ELECTRONICS HOUSING (1) IN APPROXIMATE LOCATION SHOWN. ORIENT LABEL SO THAT TEXT FACES ADJACENT CAP.

25 SECURE BATTERY CONNECTOR (PART OF 1) TO BATTERY HOLDER ASSEMBLY (27) USING A 38,1mm / 1.5" LONG STRIP OF MASKING TAPE (12).

24 PLUG SPECIFIED 8 PIN CONNECTOR (PART OF METERBODY ASSEMBLY (2)(3)(4)(5)) INTO CONNECTOR "J1" (REF. DETAIL "A") ON SENSOR PWA (PART OF (17)).

23 REFER TO HONEYWELL DRAWING 50024851 FOR INTEGRAL TEMPERATURE PROBE ASSEMBLY SPECIFICATIONS.

22 THREAD BATTERY END CAP (9)(20) ONTO ELECTRONICS HOUSING (1) A MINIMUM OF 2 FULL TURNS.

 WHEN CAP IS INSTALLED, THIS ASSEMBLY IS NOT ELECTROSTATIC SENSITIVE.

20. TEST AND CALIBRATE PER THE FOLLOWING HONEYWELL SPECIFICATIONS: 50021789 (PRESSURE), 50023499 (TEMPERATURE), 50023500 (HLAI) & 50023501 (CORROSION).

19 INCLUDE COPY OF MANUALS, BRACKET KITS, ETC. PER SALES ORDER INSTRUCTIONS.

18 LUBRICATE O-RING (PART OF (23), (24) OR (25)) WITH SILICONE GREASE (22). IF USED, TIGHTEN STRAIGHT ANTENNA (23) OR REMOTE ANTENNA ADAPTER (25) UNTIL FULLY SEATED AGAINST FACE OF BOSS. IF USED, POSITION ELBOW ANTENNA (24) FOR SHIPMENT. THEN TIGHTEN SET SCREW (PART OF (1)) ON STRAIGHT ANTENNA (23) AND REMOTE ANTENNA ADAPTER (25) TO 0,4 - 0,5 Nm / 3,5 - 4,4 LB-IN. **DO NOT** TIGHTEN SET SCREW ON ELBOW ANTENNA (24).

17 PASS SEAL WIRE THROUGH HOLES IN HOUSING AND TAG AND SEAL (FOR WIRED ON TAG OPTIONS).

 DO NOT CONNECT. CUSTOMER TO CONNECT AT INSTALLATION.

15 AFTER INSTALLING, TORQUE CAPTIVE SCREWS TO 0,4 - 0,5 Nm / 3.5 - 4.4 LB-IN.

14 PRIOR TO INSTALLING BATTERY HOLDER ASSEMBLY (27), INSTALL (2) BATTERIES (28). NOTE SPECIFIED POLARITY DIRECTION ON EACH BATTERY. ALL BATTERIES MUST HAVE THE SAME MANUFACTURER'S MODEL NUMBER.

13 AFFIX LOCAL LANGUAGE LABELS (31) TO ELECTRONICS HOUSING ASSEMBLY (1) PRIOR TO INSTALLING NAMEPLATE (29). ORIENT LABELS SO THAT THE TEXT FACES ADJACENT CAP.

12 PLUG SPECIFIED 4 PIN CONNECTOR (PART OF ELECTRONICS HOUSING ASSEMBLY 1) INTO CONNECTOR J1 (REF. DETAIL "A") ON SENSOR PWA (PART OF 17).

11 PLUG SPECIFIED 8 PIN CONNECTOR (PART OF ELECTRONICS HOUSING ASSEMBLY 1) INTO CONNECTOR J5 (REF. DETAIL "A") ON SENSOR PWA (PART OF 17).

10. CONNECT LOOSE COAX CONNECTOR (PART OF ANTENNA ASSEMBLY (23), (24) OR (25)) TO CONNECTOR CN2 (REF. DETAIL "A") ON RADIO PWA (PART OF (17)).

9 ATTACH WRENCH (35) TO BATTERY COMPARTMENT CAP ASSEMBLY (9)(20) USING A 25,4mm/1.00" LONG STRIP OF MASKING TAPE (12). TAPE NOT PERMITTED TO COVER TEXT ON CAP.

8 FOR RELEASE APPROVALS SEE ECO #0031097.

7 SHIPPED LOOSE.

6 APPLY SILICONE GREASE (22) TO EXTERNAL THREADS OF CAP ASSEMBLIES (8)(19) & (9)(20); ADAPTER (10); ANTENNA ASSEMBLIES / ADAPTERS (23), (24) & (25) AND INTERNAL THREADS OF ELECTRONICS HOUSING ASSEMBLY (1).

5 TIGHTEN SET SCREW OF METER CAP ASSEMBLY (8)(19) ON SENSOR COMPARTMENT END OF ELECTRONICS HOUSING ASSEMBLY (1).

4 EXTREME CARE MUST BE TAKEN TO AVOID ELECTROSTATIC POTENTIAL ON SEMI-CONDUCTOR DEVICES DURING ASSEMBLY, TEST AND HANDLING. SEE SPECIFIC FIND NUMBER DRAWING FOR SENSITIVITY LEVEL.




3 ASSEMBLE METERBODY (2)(3)(4)(5) / ADAPTER (10) TO HOUSING ASSEMBLY (1) SO THAT IT IS RECESSED APPROXIMATELY 0,76/-.030 TO 2,29/-.090 (0.5 TO 1.5 TURNS AFTER FLUSH CONDITION) UNTIL SET SCREW IS CENTERED IN LARGE SLOT OF METERBODY ASSEMBLY / ADAPTER. TIGHTEN SCREW TO PREVENT ROTATION.

2 LUBRICATE O-RING (13) AND THREADED INTERFACE OF METERBODIES (2), (3), (4) & (5) AND HOUSING ASSEMBLY (1) WITH SILICONE GREASE (22).

1. ASSEMBLY TO CONFORM TO:
HONEYWELL "ELECTRICAL/MECHANICAL" WORKMANSHIP STANDARDS (REF. 51153808) AND HONEYWELL "ELECTROSTATIC DISCHARGE" (REF. 51153809) STANDARDS.

NOTES:

58	50018110-TAB	REMOTE CABLE A, TNC-R TO N	7	19
57	50018278-TAB	REMOTE CABLE A, N MALE TO N MALE	7	19
56	50018279-090	LIGHTNING PROTECTION	7	19
55	50018414-001	REMOTE OMNIDIRECTIONAL ANTENNA, 8 dBi	7	19
54	50018415-001	REMOTE DIRECTIONAL ANTENNA, 14 dBi	7	19
53	51153888-TAB	CD-ROM	7	19
52	34-XY-25-21	QUICK START MANUAL	7	19
51	34-XY-25-18	CORROSION MANUAL	7	19
50	34-XY-25-17	HLAI MANUAL	7	19
49	34-XY-25-16	TEMPERATURE MANUAL	7	19
48	34-XY-25-15	PRESSURE MANUAL	7	19
47	50025434	LABEL USAGE DOCUMENT		
46	30757143-002	CAPLUG		
45				
44				
43	51196557-TAB	FLAT MOUNTING BRACKET KIT	7	19
42	30752770-TAB	ANGLE MOUNTING BRACKET KIT	7	19
41	51452867-TAB	FLANGE KIT, PROCESS HEAD	7	19
40	30757109-001	NAMEPLATE	28	
39	30757143-001	CAP, PROTECTIVE		
38				
37	30353122-001	CAPLUG		
36				
35	30754459-002	WRENCH, HEX 1,5mm	9	
34	50008038-001	NAMEPLATE, BLANK- TG OPTION		
33	30753049-001	SEAL, SLOTTED		
32	50016195-TAB	LABEL, FCC		
31	50017562-TAB	LABEL, LOCAL LANGUAGE		
30	51197929-001	SCREW ASSEMBLY, SEMS M3 X 8mm LG.		
29	50016193-001	NAMEPLATE		
28	50016189-001	BATTERY, "D" CELL		
27	50015840-TAB	BATTERY HOLDER ASSEMBLY		
26				
25	50016577-TAB	ANTENNA ASSEMBLY, REMOTE ADAPTER		
24	50016229-TAB	ANTENNA ASSEMBLY, ELBOW		
23	50020767-TAB	ANTENNA ASSEMBLY, STRAIGHT		
22	B-1187	GREASE, SILICONE		
21	51453543-001	LABEL , 105° WIRE		
20	50016190-001	CAP ASSEMBLY, BATTERY		
19	50015623-001	CAP ASSEMBLY, LCD		
18	50000682-001	ADAPTER, 1/2 NPT MALE TO 3/4 NPT FEMALE	7	
17	50015866-TAB	ELECTRONICS MODULE ASSEMBLY		
16	51452429-001	NAMEPLATE	28	
15	50011613-001	CAP, PROTECTIVE		
14	30752785-010	O-RING		
13	30752785-009	O-RING		
12	50028459-001	TAPE - MASKING		
11				
10	50018453-TAB	ADAPTER		
9	50026127-001	CAP ASSEMBLY, BATTERY - STN.STL.		
8	50026009-001	CAP ASSEMBLY, LCD - STN.STL.		
7				
6				
5	50019779-TAB	METERBODY ASSEMBLY, SANITARY SEAL		
4	50019781-TAB	METERBODY ASSEMBLY, AP/I & GP/I		
3	50019777-TAB	METERBODY ASSEMBLY, LGP/I		
2	50019775-TAB	METERBODY ASSEMBLY, DP/I & GP/I		
1	50017996-TAB	ELECTRONICS HOUSING SUB-ASSEMBLY		
FIND NO	PART NO.	DESCRIPTION		

				
	SCALE: NONE	REV: B	DATE: 10/08/07	SHEET: 6 of 6