

NOTES: (SEE SHEET #4 FOR NOTES)

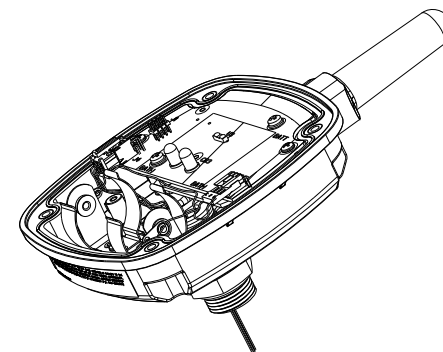
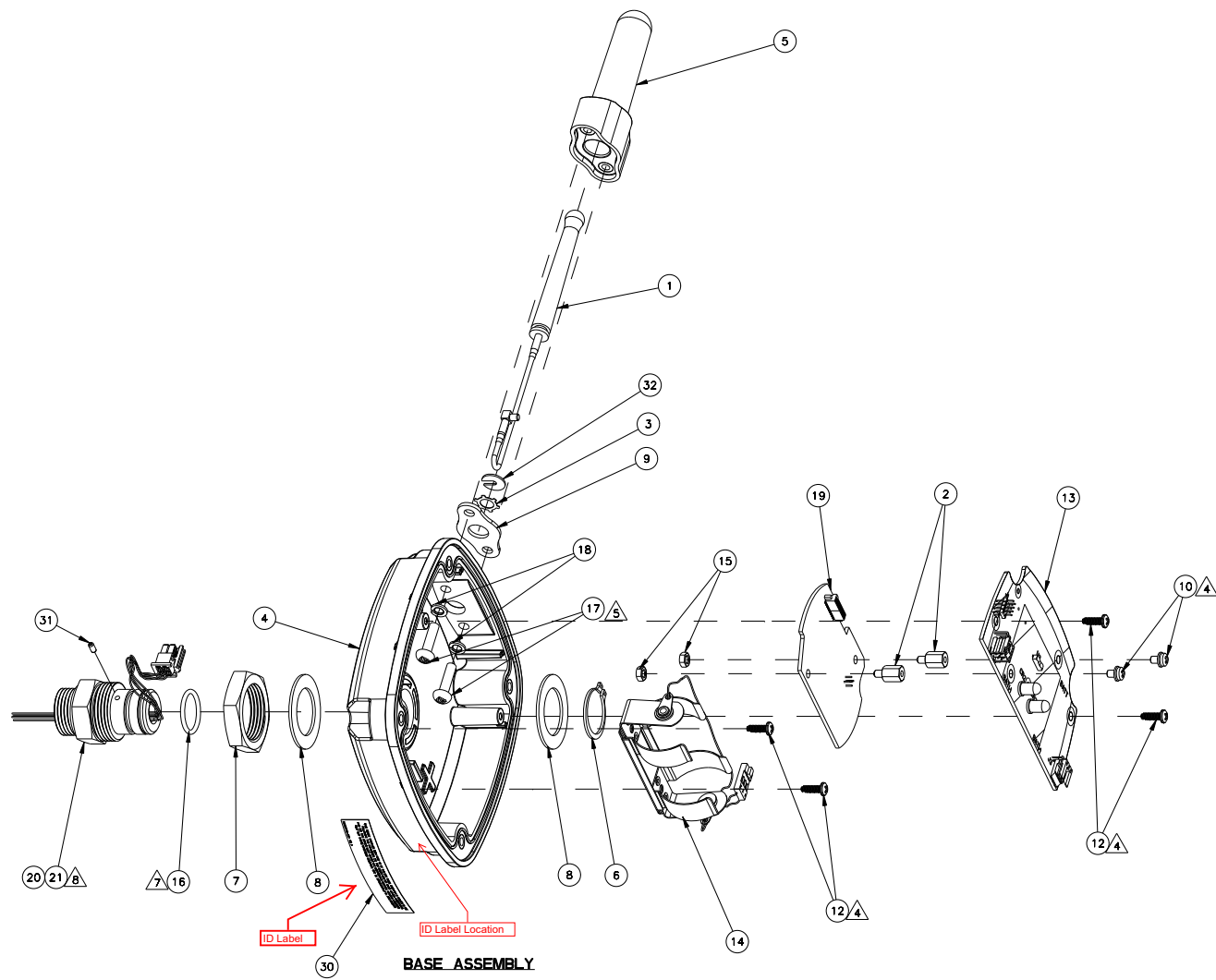
MASTER FILE TYPE: PRO/ENGINEER

SEE SEPARATE PARTS LIST

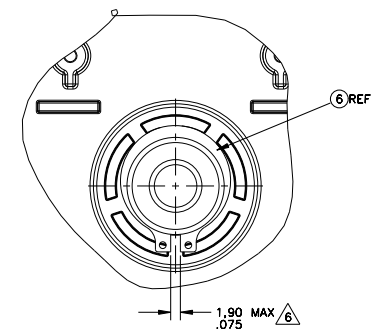
UNPUBLISHED, HONEYWELL CONFIDENTIAL, TRADE SECRET. IN THE EVENT OF PUBLICATION THE FOLLOWING NOTICE SHALL APPLY: COPYRIGHT 2010, HONEYWELL INTERNATIONAL INC. ALL RIGHTS RESERVED. THIS DOCUMENT IS PROPRIETARY INFORMATION OF HONEYWELL INTERNATIONAL, INC. NEITHER THIS DOCUMENT NOR THE INFORMATION CONTAINED HEREIN SHALL BE REPRODUCED, USED OR DISCLOSED TO OTHERS WITHOUT THE WRITTEN AUTHORIZATION OF HONEYWELL. USE, DUPLICATION, OR DISCLOSURE OF THIS DOCUMENT IS SUBJECT TO THE RESTRICTIONS SET FORTH IN A WRITTEN AGREEMENT. NOTHING CONTAINED HEREIN SHALL BE CONSTRUED AS CONFERRING BY IMPLICATION, ESTOPPEL, OR OTHERWISE ANY LICENSE TO ANY PATENT, TRADEMARK, COPYRIGHT OR OTHER INTELLECTUAL PROPERTY RIGHT OF HONEYWELL OR ANY THIRD PARTY.

-002		M20 HART ADAPTER ASSY	
-001		1/2 NPT HART ADAPTER ASSY	
TAB		DESCRIPTION	
DRAWN		PG	052610
CHECKED			
DEV ENGR		1	
MFG ENGR			
QA ENGR			
MAT ENGR			
TOLERANCE UNLESS NOTED		C/A2	
FINISH		50054256	
ANGULAR DIMENSION		SCALE: 1:1	USED 50050070
		SHT 1 OF 4	

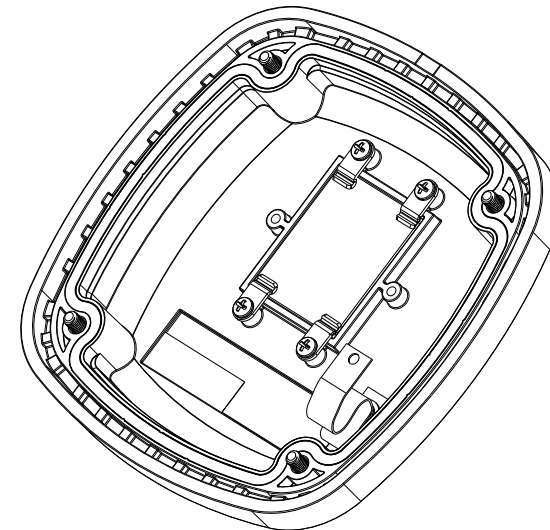
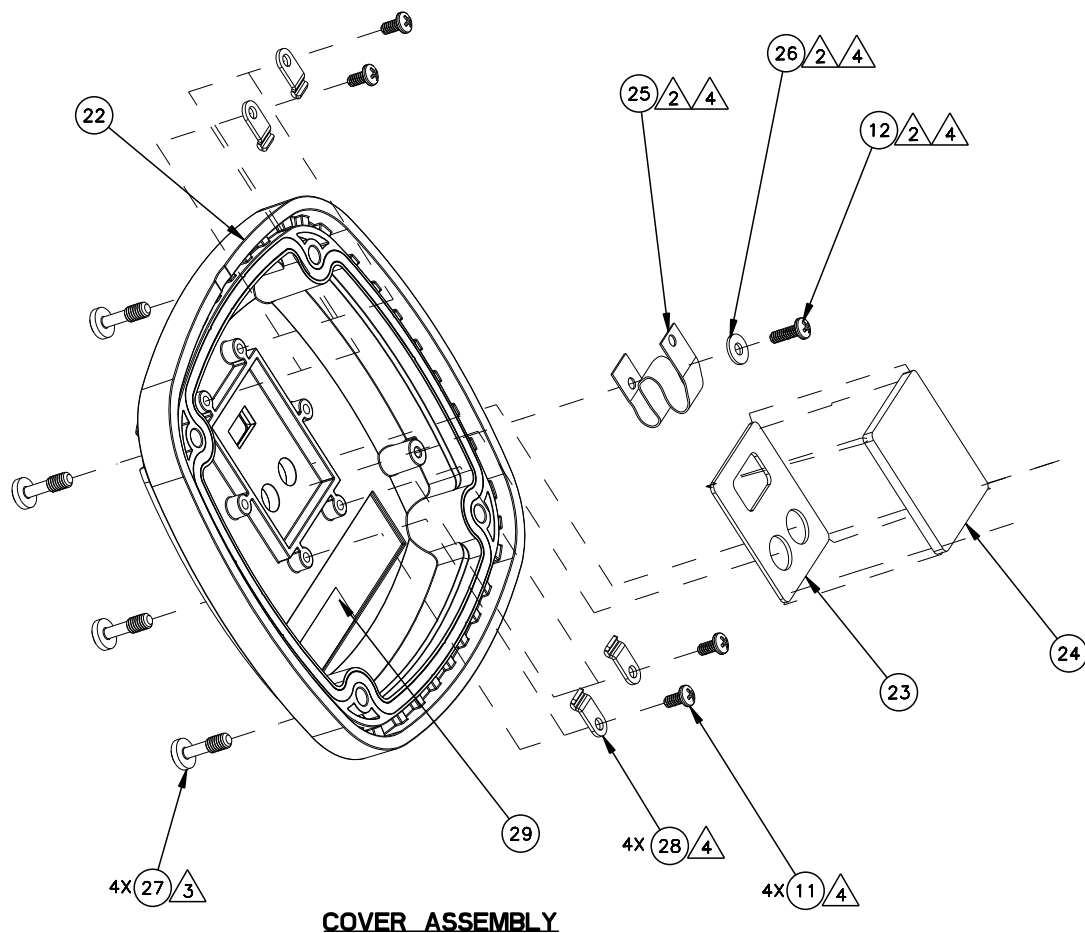
50054256



SCALE 1:1



NOTES: (SEE SHEET #4 FOR NOTES)



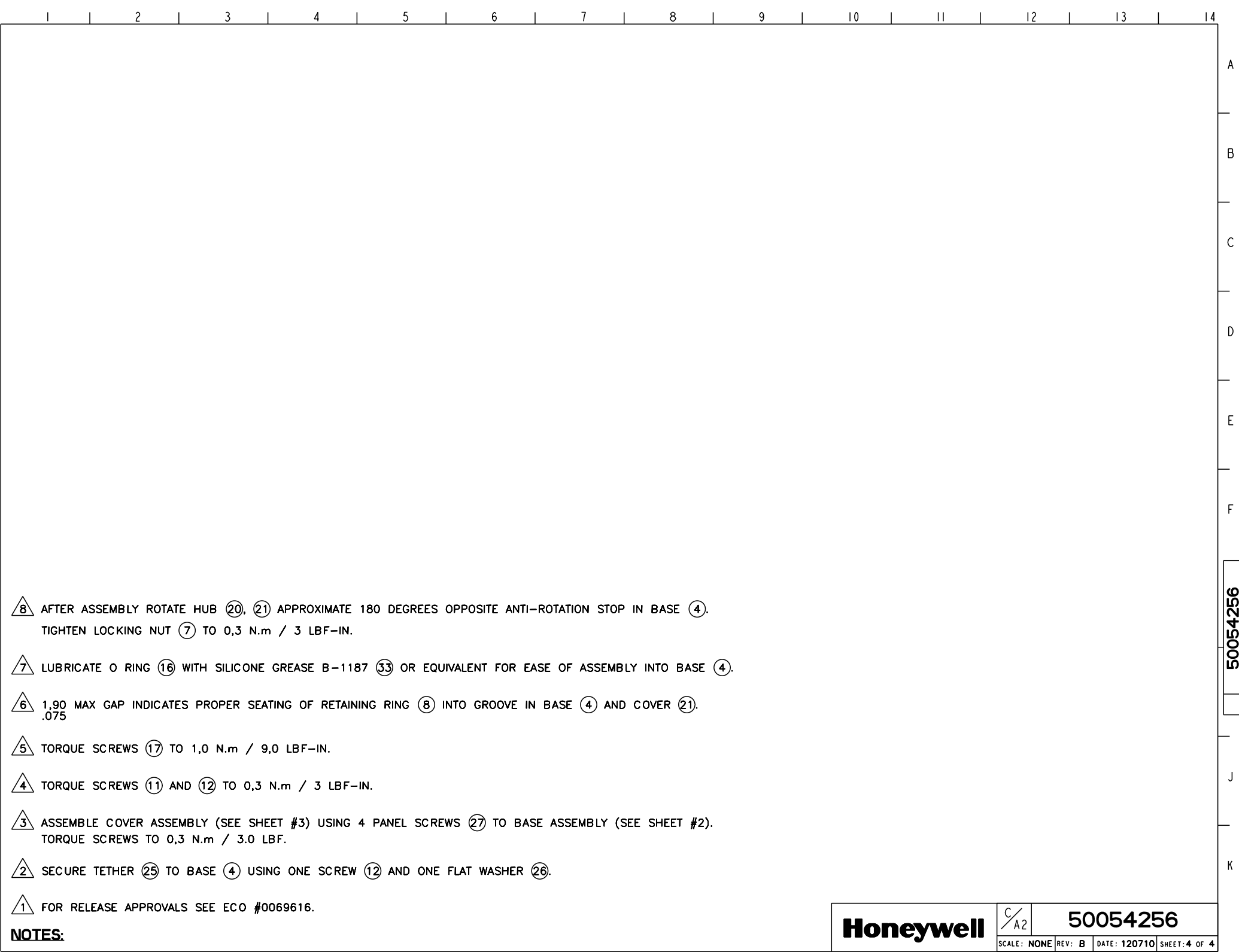
NOTES: (SEE SHEET #4 FOR NOTES)

Honeywell

C/A2

50054256

SCALE: 1:1 REV: B DATE: 120710 SHEET: 3 OF 4



8 AFTER ASSEMBLY ROTATE HUB 20, 21 APPROXIMATE 180 DEGREES OPPOSITE ANTI-ROTATION STOP IN BASE 4.
TIGHTEN LOCKING NUT 7 TO 0,3 N.m / 3 LBF-IN.

7 LUBRICATE O RING 16 WITH SILICONE GREASE B-1187 33 OR EQUIVALENT FOR EASE OF ASSEMBLY INTO BASE 4.

6 1,90 MAX GAP INDICATES PROPER SEATING OF RETAINING RING 8 INTO GROOVE IN BASE 4 AND COVER 21.
.075

5 TORQUE SCREWS 17 TO 1,0 N.m / 9,0 LBF-IN.

4 TORQUE SCREWS 11 AND 12 TO 0,3 N.m / 3 LBF-IN.

3 ASSEMBLE COVER ASSEMBLY (SEE SHEET #3) USING 4 PANEL SCREWS 27 TO BASE ASSEMBLY (SEE SHEET #2).
TORQUE SCREWS TO 0,3 N.m / 3.0 LBF.

2 SECURE TETHER 25 TO BASE 4 USING ONE SCREW 12 AND ONE FLAT WASHER 26.

1 FOR RELEASE APPROVALS SEE ECO #0069616.

NOTES:

50054256