

USER MANUAL

BLUETOOTH HEADSET

Introduction

Congratulations and thank you for choosing Bluetooth Headset. It is a cordless, Hands Free headset solution for Bluetooth equipped mobile phones.

What is Bluetooth Wireless Technology?

Bluetooth is a wireless protocol for audio and data communication between devices within a small distance of about 10m (33 ft). It uses the 2.4GHz international free spectrum to make 1Mbit connection links. It is a popular solution for replacing wire connections. Products with Bluetooth technology must be qualified and pass interoperability testing by the Bluetooth Special Interest Group prior to release.

How to Use Your Headset?

Your wireless headset lets you connect with other devices that have integrated Bluetooth technology. Your headset allows you to:

- (1) Use your Bluetooth equipped mobile phone Hands Free, especially when driving.
- (2) Handle incoming and outgoing calls with the headset multifunction control button (MFB).
- (3) Use voice activation to make and receive calls with mobile phones that support voice dialing and activation.

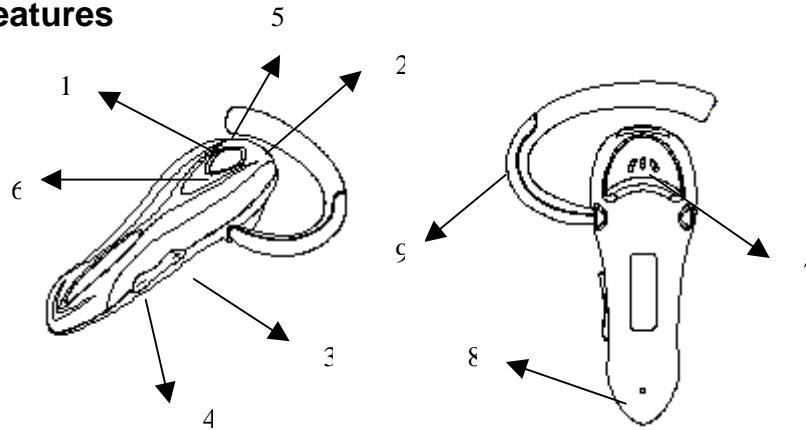
NOTE: The Headset supports both Headset and Hands Free Bluetooth Profiles for increased functionality and compatibility with more products. Please consult your phone user's guide for more information.

Operating Your Headset

Overview

Please make sure that your mobile phone or equipment has compatible Bluetooth functionality.

Headset Features



1	MFB	Multi Function Button.
2	Charging port	Battery Charger Socket.
3	SW1	Adjusts speaker volume up.
4	SW2	Adjusts speaker volume down.
5	LED 1	Red LED.
6	LED 2	Yellow LED.
7	Speaker	Sound Reproduction.
8	Microphone	Voice input.
9	Earhook	Attaches headset to ear.

Charging Your Headset

First Time Use - Please charge the headset for 20 hours before the first use to properly condition the built-in Li-ion battery.

Recharging – When you hear 5 rapid beeps through the headset speaker, repeated at 20-second intervals, the headset has about 10 minutes power left. The headset battery should be recharged as soon as possible.

After the battery is fully charged, the indicator LED on the charger will turn to green. It takes about 1.5 hours to fully charge the battery. Do not charge for more than 24 hours.

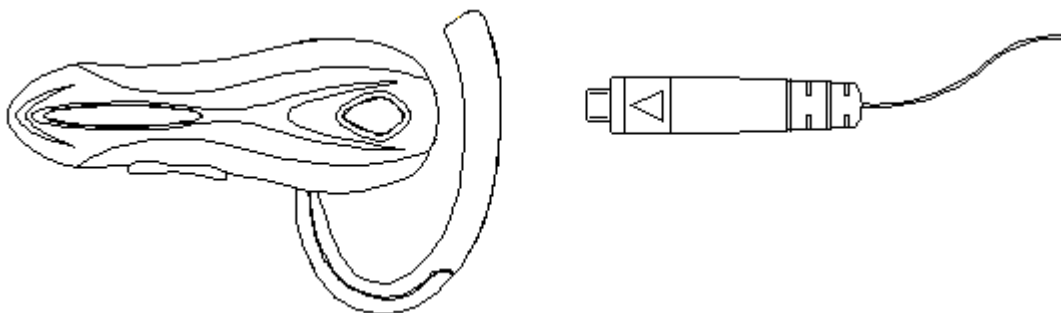
Over extended periods of time, batteries gradually wear down and require longer charging times, this is normal.

The more you talk on the phone with the headset, the less standby time your battery has.

How to Charge

Step

- 1 Plug the charger into the headset, with the charger's release tab facing up and the headset facing down.



- 2 After a full charge, remove the charger from the electrical outlet, press the release tab, and detach the charger cord from the headset.

NOTE: Please use only the included travel charger for charging the headset.

Wearing the Headset

When packaged, the headset is configured for wearing on the right ear.

Step

- 1 Hook the headset vertically on your right ear



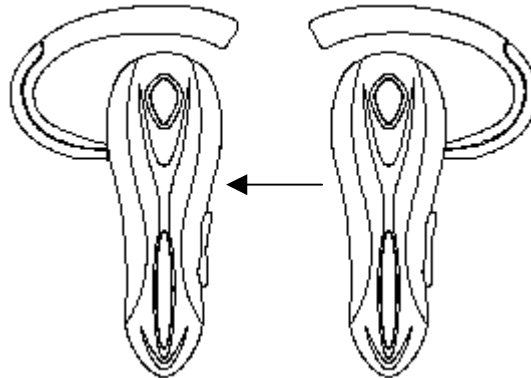
-
- 2 Position the speaker in your ear comfortably, and point the microphone towards your mouth.



Right or Left Ear

The direction of the ear clip has to be changed should you decide to wear the headset on your left ear.

To Adjust the Ear Clip for Left-ear Use:



Turning the Headset On or Off

To turn the headset on

Press and hold the headset MFB for more than 2 seconds, the headset will light up. The indicator red LED will flash 4 times. You can now use your headset.

To turn the headset off

Press and hold the headset MFB for more than 2 seconds, the indicator yellow LED will flash 4 times before the headset switches off.

Pairing your headset and your phone

[Pairing] creates a link between devices equipped with Bluetooth wireless technology and allows the phone to remember the headset's unique ID; you could add it to a list of paired device in the phone. The headset should be paired once with the phone before use. If the pairing information or log is deleted from the phone, the headset must be paired again with the phone before use, once your headset and phone are paired, your headset can be used with your phone.

Step

- 1 While the headset is on, press and hold the MFB till the red LED/yellow LED flash alternatively, the headset is now in pairing mode.
- 2 Perform a device discovery from the phone according to its manual.
- 3 Select [**PIONEER EXTRA**] from the discovered devices list and confirm the on-screen prompts.
- 4 When prompted by the phone, enter the passkey [1234] and the headset will confirm a successful pairing with the red/yellow LED flashing 4 times.

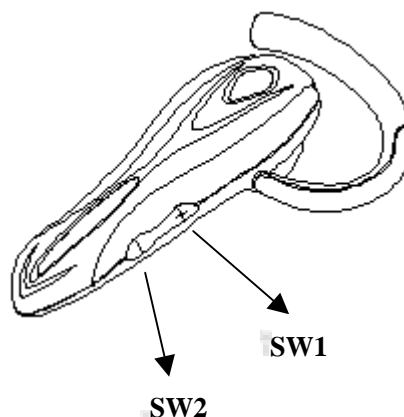
NOTE: 1 make sure the headset and the device you are using with are no more than 10m/33 ft. apart, so they are within operable range.

- 2 If the headset is not successfully paired within 1 minute, it will automatically leave pairing mode. If you want to continue pairing, please start pairing mode again. For details on device discovery for your phone, please refer to the user's guide for the phone.

Volume Adjustment

Headset speaker volume can be adjusted during a call.

To adjust the speaker volume



- To turn up the volume, press the headset SW1.
- To turn down the volume, press the headset SW2.

Placing and Receiving Calls

Your headset supports both Hands Free and Headset Profiles. Accessing call functions depend on which profile the phone supports.

You can activate call function with Hands Free and Headset Profiles according to the following table:

- NOTE:** 1. Some phones do not support all features listed. Please Consult your phone user's guide.
2. The MFB button is activated by short and long presses. A short press refers to duration of less than 1 second. A long press refers to duration of more than 1 second. After a short press, you should hear 1 beep to confirm the operation. After a long press for more than 1 second, you should hear 1 beep, releasing the button confirms the operation.

	Device Status		Action	
Function	Phone	Headset	Hand Free profiles	Headset Profiles
Enter pairing mode	On	On	Long press MFB till the red LED/yellow LED flash alternatively	
Leave pairing mode	On	On	Short press MFB till the red LED returns to flash	
Make a voice Dial call ON	On	On	Short press MFB, Speak name	Phone dials call. (depends on phone)
Receive a call	On-phone rings	On	Short press MFB (call is answer)	Short press MFB (call is answered) (depends on phone)
End a call	On	On-in call	Short press MFB	Short press MFB

Headset Indicator LED

With charger plugged in:

Indicator (Charger)	Headset
RED LED ON	Charging in progress
GREEN LED ON	Charging complete

With no charger attached

Indicator (Headset)	Headset
Off	Power off
RED LED AND YELLOW LED flash alternatively	Pairing mode
RED LED /YELLOW LED 4 rapid flashes	Pairing successful
RED LED slow flashes every 3 seconds	Standby (not in call)
RED LED quick flashes every 4 seconds	Connected (in call)

Additional Information

Trouble shooting

1. The Headset cannot be activated at least for 10 minutes.

To activate the headset, it needs to charge the battery at least for 20 minutes. However, it is highly recommended to fully charge the battery before use.

2. No indication of charging is shown.

For the Headset battery that is empty, or has not been used for a long time, it may take a couple of minutes for the charger indicator to show charging status with a steady red light

3. No sound contact between Headset and other devices.

- Make sure that two devices have been paired
- Make sure that the Headset is turned on.
- Make sure that the two devices are within a working range.
- Make sure that your Mobile Phone can support only on Headset.
- Some Bluetooth mobile phones can support only one Bluetooth headset. Disconnection may happen when there is more than one Headset paired with your mobile phone.

Product care

Use of non-supported accessories or components may result in performance deterioration, product damage, injury; or electronic shock, and warranty termination.

- Do not attempt to disassemble your headset, as it does not contain any components serviceable or repairable by the user.
- Do not paint on your headset as the paint could prevent normal use.
- Do not place the headset in a dusty area, and only use a soft cloth to clean your headset
- Do not allow children to play with your headset, as they might injure

themselves or others as well as the headset, and small parts from it may detach and become a choking hazard.

- Do not store the headset in extremely hot or cold conditions.

Potentially Explosive Atmospheres

When in a possible explosive atmosphere, turn off all electronics devices as they may generate sparks which can cause an explosion or fire.

Explosive atmosphere may include gas stations, fuel or chemical storage facilities, and in environment where metal powder, grain, dust are suspended in the air.

For safety reasons, do not carry or store flammable goods such as gas, liquid in your vehicle compartment containing an electronic device.

Power supply

- Power supply must be connected to designated power sources as marked on the product.
- To avoid potential damage to the electric cord, only remove it by grasping onto the AC adaptor rather than the cord itself from the outlet.
- Ensure the cord is well positioned to avoid potential damage.
- Before attempting to clean, please unplug the unit from any power source to avoid potential electric shock.
- The charger is designed for indoor use only, and must not be used outdoors.

NOTE: For queries about any exceptions when using Bluetooth Equipment, due to national requirements or limitations, please visit www.bluetooth.com.

Emergency Calls

Connection cannot be guaranteed at all times under all conditions. The headset is not recommended for use as a primary means of making and receiving calls especially in emergency situations. Keep in mind that when making or receiving calls, the headset and the electronic device connected to it must be turned on and within range. Emergency calls can sometimes be disturbed on certain cellular phone networks or when certain network services and/or phone features are in use. Check with your local cellular service for details.

Battery information

New Batteries

The battery is not fully charged when it is new. For first time use, please charge for 20 hours before using.

Low Battery

When the battery is low, there will be 5 fast beeps every 20 seconds to alert the user.

Battery use and care

If treated with care, a rechargeable battery has a long service life. A new battery, or one that has not been used for a long period of time, could have reduced capacity the first few times it is used.

- . Use only the included charger for charging the headset.
- . Do not expose your headset in temperatures above +55 °C (+131 °F). If the headset is used in cold temperatures, the battery capacity may be reduced.
- . The battery should be charged within normal room temperature and conditions.

NOTE: only qualified service centers are authorized to remove or replace the battery.

FAQ

1. Q: Why doesn't the Headset work with my mobile phone after the headset has been fully charged and switched on?

A: You have to activate the Bluetooth function of your mobile phone first and pair it with the Headset.

2. Q: Does the Headset work with all types of Headset?

A: No, It works only with Bluetooth enabled phones.

3. Q: What is the operation distance between the Headset and a Bluetooth mobile phone?

A: The Headset is fully compliant to Bluetooth V1.1, Headset Profile. The maximum operation distance can be up to 10 meters, however it will be affected and shortened by different circumstances and different brands of mobile phones. Some mobile phones are less operative distance.

4. Q: why can't my mobile phone find the Headset?

A: If the Headset is not in pairing mode, your mobile phone won't find the Headset. Please set the Headset into pairing mode before starting your mobile phone to search for the Headset. (Please refer to the User Manual for detailed instructions)

5. Q: Do I need to pair the Headset with my mobile phone every time I use it?

A: No. Once the Pairing is set up between the two devices, they will remain paired even when one or both devices are powered off.

6. Q: Why is there a disturbance noise coming from the Headset?

A: The performance of the Headset will be affected by two factors
Whether your mobile phone is in a good signal area. If your mobile phone is in weak signal area, you won't hear clearly with the Headset.

Whether it is in the operative range.

7. Q: Why doesn't the Headset work suddenly?

A : The headset may have run out of battery. When it is in low battery, a red LED will start to flash.

Some Bluetooth mobile phones, which have a problem with the Bluetooth implementation, will occasionally but not often, get into an Bluetooth shut-down status in unpredictable circumstance. When this happens, please reset your mobile phone by removing the battery. (It is not necessary to do the Pairing again.) Make sure that your phone has latest version of firmware loaded onto it. Please check the website of your mobile phone for new firmware.

8. Q: Why doesn't the voice dialing function work with the headset?

A: You may have to record your voice with the Headset to your mobile phone.

SPECIFICATION

- Bluetooth Specification: V1.1 version
- Frequency band: 2.4 GHz-2.483GHz ISM Band
- Dimension: 71mm × 25mm × 23mm
- Weight: 12g
- Talk time: Up to 4 hrs
- Standby time: Up to 100 hrs
- Operation Range: 10m

FCC Safety Statements

This device complies with Part 15 of the FCC rules. Operation is subject to the following two conditions.

- 1 This device must accept any interference received, including interference that may cause undesired operation.
- 2 This device may not cause harmful interference.

Part 15 Federal Communications Commission (FCC) Requirements, Part 15

This equipment has been tested and found to comply with the limits for a class B digital device, pursuant to part 15 of the FCC Rules. These limits are designed to provide reasonable protection against harmful interference in a residential installation.

This equipment generates, uses and can radiate radio frequency energy and, if not installed and used in accordance with the instruction, may cause harmful interference to radio communications. However, there is no guarantee that interference will not occur in a particular installation, if this equipment does cause harmful interference to radio or television reception, which can be determined by turning the equipment off and on, the user is encouraged to try to correct the interference by one or more of the following measures:

- Reorient or relocate the receiving antenna
- Increase the separation between the equipment and receiver.
- Connect the equipment into an outlet on a circuit different from that to which the receiver is connected.
- Consult the dealer or an experienced radio/TV technician for help

FCC NOTE:

THE MANUFACTURER IS NOT RESPONSIBLE FOR ANY RADIO OR TV INTERFERENCE CAUSED BY UNAUTHORIZED MODIFICATIONS TO THIS EQUIPMENT. SUCH MODIFICATIONS COULD VOID THE USER'S AUTHORITY TO OPERATE THE EQUIPMENT.