



ANSI/IEEE Std. C95.1-1992

In accordance with the requirements of

FCC Report and Order: ET Docket 93-62, and OET Bulletin 65 Supplement C

FCC SAR TEST REPORT

For

HSDPA/WCDMA/EDGE/GPRS/GSM 850/900/1800/1900/2100MHz Mobile Phone

Model No.: i-mobile i858

Trade Name: i-mobile

Test Report Number:

KS100409B01

Prepared for

YuHua TelTech (Shanghai) Co.,Ltd.

4F/2, District B, No. 1000 Jinhai Road, Pudong 201206, Shanghai, P.R.
China

Issued by

Compliance Certification Services (Kunshan) Inc.

No.10, Weiye Rd., Innovation Park, Eco & Tec. Development Part,
Kunshan City, Jiangsu Province, P.R.China.

TEL: 86-512-57355888

FAX: 86-512-57370818

<http://www.ccsrf.com>



Note: This report shall not be reproduced except in full, without the written approval of Compliance Certification Services Inc. This document may be altered or revised by Compliance Certification Services Inc. personnel only, and shall be noted in the revision section of the document.



TABLE OF CONTENTS

1.	CERTIFICATE OF COMPLIANCE (SAR EVALUATION)	3
2.	EUT DESCRIPTION	4
3.	REQUIREMENTS FOR COMPLIANCE TESTING DEFINED BY THE FCC	6
4.	TEST METHODOLOGY	6
5.	Test Configuration	6
6.	DOSIMETRIC ASSESSMENT SETUP	6
	6.1 MEASUREMENT SYSTEM DIAGRAM	8
	6.2 SYSTEM COMPONENTS	9
7.	EVALUATION PROCEDURES	11
8.	MEASUREMENT UNCERTAINTY	15
9.	EXPOSURE LIMIT	16
10.	EUT ARRANGEMENT	17
	10.1 ANTHROPOMORPHIC HEAD PHANTOM	17
	10.2 DEFINITION OF THE "CHEEK/TOUCH" POSITION	18
	10.3 DEFINITION OF THE "TILTED" POSITION	19
11.	MEASUREMENT RESULTS	20
	11.1 TEST LIQUIDS CONFIRMATION	20
	11.2 SYSTEM PERFORMANCE CHECK	21
	11.3 EUT TUNE-UP PROCEDURES AND TEST MODE	24
	11.4 CONDUCTED OUTPUT POWER	27
	11.5 KDB 648474 SAR HANDSETS MULTI XMITER ASSESSMENT	29
	11.6 EUT SETUP PHOTOS	31
	11.7 SAR MEASUREMENT RESULTS	33
	EUT PHOTO	42
12.	EQUIPMENT LIST & CALIBRATION STATUS	47
13.	FACILITIES	48
14.	REFERENCES	48
15.	ATTACHMENTS	49

**1. CERTIFICATE OF COMPLIANCE (SAR EVALUATION)**

Product name: HSDPA/WCDMA/EDGE/GPRS/GSM850/900/1800/1900/2100MHz Mobile Phone
Model No.: i-mobile i858
Trade name: i-mobile
Devices supporting GPRS: Class B
Device Category: PORTABLE DEVICES
Exposure Category: GENERAL POPULATION/UNCONTROLLED EXPOSURE
Date of Test: April 16, 2010
Applicant: YuHua TelTech (Shanghai) Co.,Ltd.
4F/2, District B, No. 1000 Jinhai Road, Pudong 201206, Shanghai, P.R. China
Manufacturer: YuHua TelTech (Shanghai) Co.,Ltd.
4F/2, District B, No. 1000 Jinhai Road, Pudong 201206, Shanghai, P.R. China
Application Type: Certification

APPLICABLE STANDARDS AND TEST PROCEDURES	
STANDARDS AND TEST PROCEDURES	TEST RESULT
47 CFR Part 2 (2.1093) Radiofrequency Radiation Exposure Evaluation: Portable Devices FCC OET Bulletin 65 (Edition 97-01), Supplement C (Edition 01-01) Evaluating Compliance with FCC Guidelines for Human Exposure to Radiofrequency Electromagnetic Fields IEEE 1528 - 2003 IEEE Recommended Practice for Determining the Peak Spatial-Average Specific Absorption Rate (SAR) in the Human Head from Wireless Communications Devices: Measurement Technique and the following specific Test Procedures: o KDB 941225 D01 SAR test for 3G devices o KDB 248227 D01 SAR measurement procedures for 802.11 a/b/g transmitters o KDB 648474 D01 SAR evaluation considerations for handsets with multiple transmitters and antennas	Pass
Deviation from Applicable Standard	
None	

The device was tested by Compliance Certification Services Inc. in accordance with the measurement methods and procedures specified in OET Bulletin 65 Supplement C (Edition 01-01). The test results in this report apply only to the tested sample of the stated device/equipment. Other similar device/equipment will not necessarily produce the same results due to production tolerance and measurement uncertainties.

Approved by:

Reviewed by:

Miro Chue
EMC Manager
Compliance Certification Services Inc.

Lin Zhang
EMC Section Manager
Compliance Certification Services Inc.

**2. EUT DESCRIPTION**

Product	HSDPA/WCDMA/EDGE/GPRS/GSM850/900/1800/1900/2100MHz Mobile Phone
Model Number	i-mobile i858
Trade Name	i-mobile
Devices supporting GPRS	Class B
FCC ID	S2VTN100
Description	Test Sample is a: Production unit
Frequency Range	GSM / GPRS / EGPRS: 850: 824.2 ~ 848.8 MHz GSM / GPRS / EGPRS: 1900: 1850.2 ~ 1909.8 MHz WCDMA / HSDPA band V: 826.4 ~ 846.6 MHz WCDMA / HSDPA band II: 1852.4 ~ 1907.6 MHz 802.11b / g: 2412 ~ 2462 MHz Bluetooth: 2402 ~ 2483.5 MHz
Operating Mode	Maximum continuous output
Transmit Power(Average)	GSM850 Band: GSM 850: 32.82 dBm GPRS 850: 32.92 dBm EDGE850:27.46 dBm GSM1900 Band: GSM 850: 30.71 dBm GPRS 850: 29.22 dBm EDGE850:26.42 dBm WCDMA Band II: WCDMA band II: 24.16 dBm HSDPA band II: 22.30 dBm WCDMA Band V: WCDMA band V: 24.53 dBm HSDPA band V: 22.49 dBm WI-FI IEEE 802.11b:17.48 dBm WI-FI IEEE 802.11g:13.50 dBm Bluetooth:-0.15 dBm
Max. SAR	GSM 850: 0.612 W/kg GSM 1900: 0.913 W/kg WCDMA band V: 0.325 W/kg WCDMA band II: 0.903 W/kg WI-FI IEEE 802.11b:0.221 W/kg
Modulation Technique	GSM / GPRS : GMSK EDGE : 8PSK WCDMA: QPSK HSDPA : QPSK / 16QAM WI-FI 802.11b / 802.11g: WI-FI IEEE 802.11b: DSSS (CCK, DQPSK, DBPSK) WI-FI IEEE 802.11g: DSSS (CCK, DQPSK, DBPSK) + OFDM (QPSK, BPSK, 16-QAM, 64-QAM) Bluetooth:FHSS



Accessories	Battery: SKU/model number:BL-84 Li-poltmer 3.7V 1500mAh(5.6Wh)
Antenna Specification	GSM/GPRS / EDGE 850 MHz:1.85dBi GSM/GPRS / EDGE 1900 MHz: 2.99 dBi WCDMA band II: 1.85 dBi WCDMA band V: 2.99 dBi Wifi :1.00 dBi Bluetooth :1.00 dBi
Antenna Type	PIFA Antenna



3. REQUIREMENTS FOR COMPLIANCE TESTING DEFINED BY THE FCC

The US Federal Communications Commission has released the report and order "Guidelines for Evaluating the Environmental Effects of RF Radiation", ET Docket No. 93-62 in August 1996. The order requires routine SAR evaluation prior to equipment authorization of portable transmitter devices, including portable telephones. For consumer products, the applicable limit is 1.6 mW/g for an uncontrolled environment and 8.0 mW/g for an occupational/controlled environment as recommended by the ANSI/IEEE standard C95.1-1992. According to the Supplement C of OET Bulletin 65 "Evaluating Compliance with FCC Guide-lines for Human Exposure to Radio frequency Electromagnetic Fields", released on Jun 29, 2001 by the FCC, the device should be evaluated at maximum output power (radiated from the antenna) under "worst-case" conditions for normal or intended use, incorporating normal antenna operating positions, device peak performance frequencies and positions for maximum RF energy coupling.

4. TEST METHODOLOGY

The Specific Absorption Rate (SAR) testing specification, method and procedure for this Mobile Phone is in accordance with the following standards:

- 47 CFR Part 2 (2.1093)
- IEEE C95.1-1999
- KDB 941225 D01 SAR test for 3G devices
- KDB 248227 D01 SAR measurement procedures for 802.11 a/b/g transmitters
- KDB 648474 D01 SAR evaluation considerations for handsets with multiple transmitters and antennas
- OET Bulletin 65 Supplement C (Edition 01-01)
- Preliminary Guidance for Reviewing Applications for Certification of 3G Device. May 2006.

5. TEST CONFIGURATION

The device was controlled by using a base station emulator R&S CMU200. Communication between the device and the emulator was established by air link. The distance between the DUT and the antenna of the emulator is larger than 50 cm and the output power radiated from the emulator antenna is at least 30 dB smaller than the output power of DUT. The DUT was set from the emulator to radiate maximum output power during all tests.

Measurements were performed on the lowest, middle, and highest channel for each testing position.

For SAR testing, EUT is in GSM/GPRS/EDGE or WCDMA/HSDPA link mode. In GSM link mode, its crest factor is 8, In GPRS/EDGE link mode, its crest factor is 2, because EUT is set in GPRS/EDGE multi-slot class 12 with 4 uplink slots. In WCDMA/HSDPA link mode, its crest factor is 1.

6. DOSIMETRIC ASSESSMENT SETUP

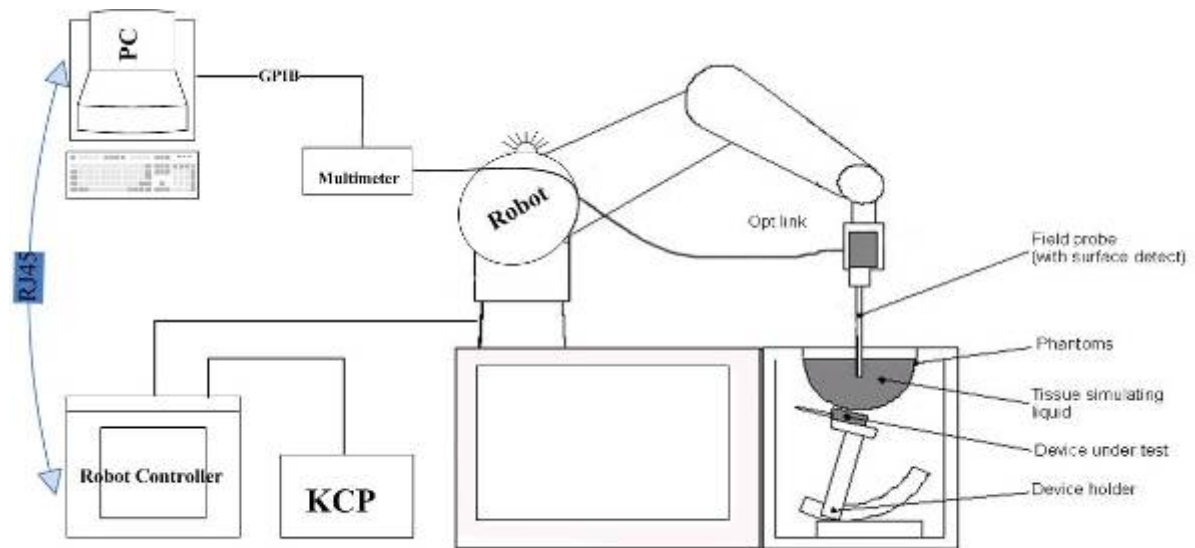
These measurements were performed with the automated near-field scanning system OPENSAR from ATTENNESSA. The system is based on a high precision robot (working range greater than 0.9 m), which positions the probes with a positional repeatability of better than ± 0.02 mm. Special E- and H-field probes have been developed for measurements close to material discontinuity, the sensors of which are directly loaded with a Schottky diode and connected via highly resistive lines to the data acquisition unit. The SAR measurements were conducted with the dosimetric probe EP100 1109 (manufactured by SATIMO), designed in the classical triangular configuration and optimized for dosimetric evaluation. The probe has been calibrated according to the procedure described in [7] with accuracy of better than $\pm 10\%$. The spherical isotropy was evaluated with the procedure described in [8] and found to be better than ± 0.25 dB. The phantom used was the SAM Twin Phantom as described in FCC supplement C, IEE P1528 and CENELEC EN50361.



The Tissue simulation liquid used for each test is in according with the FCC OET65 supplement C as listed below.

<i>Ingredients (% by weight)</i>	<i>Frequency (MHz)</i>									
	<i>450</i>		<i>835</i>		<i>915</i>		<i>1900</i>		<i>2450</i>	
<i>Tissue Type</i>	<i>Head</i>	<i>Body</i>	<i>Head</i>	<i>Body</i>	<i>Head</i>	<i>Body</i>	<i>Head</i>	<i>Body</i>	<i>Head</i>	<i>Body</i>
<i>Water</i>	38.56	51.16	41.45	52.4	41.05	56.0	54.9	40.4	62.7	73.2
<i>Salt (NaCl)</i>	3.95	1.49	1.45	1.4	1.35	0.76	0.18	0.5	0.5	0.04
<i>Sugar</i>	56.32	46.78	56.0	45.0	56.5	41.76	0.0	58.0	0.0	0.0
<i>HEC</i>	0.98	0.52	1.0	1.0	1.0	1.21	0.0	1.0	0.0	0.0
<i>Bactericide</i>	0.19	0.05	0.1	0.1	0.1	0.27	0.0	0.1	0.0	0.0
<i>Triton X-100</i>	0.0	0.0	0.0	0.0	0.0	0.0	0.0	0.0	36.8	0.0
<i>DGBE</i>	0.0	0.0	0.0	0.0	0.0	0.0	44.92	0.0	0.0	26.7
<i>Dielectric Constant</i>	43.42	58.0	42.54	56.1	42.0	56.8	39.9	54.0	39.8	52.5
<i>Conductivity (S/m)</i>	0.85	0.83	0.91	0.95	1.0	1.07	1.42	1.45	1.88	1.78

6.1 MEASUREMENT SYSTEM DIAGRAM



The OPENSAR system for performing compliance tests consist of the following items:

1. A standard high precision 6-axis robot (KUKA) with controller and software.
 2. KUKA Control Panel (KCP).
 3. A dosimetric probe, i.e., an isotropic E-field probe optimized and calibrated for usage in tissue simulating liquid. The probe is equipped with an optical surface detector system.
 4. The functions of the PC plug-in card are to perform the time critical task such as signal filtering, surveillance of the robot operation fast movement interrupts.
 5. A computer operating Windows 95.
 6. OPENSAR software.
 7. Remote control with teaches pendant and additional circuitry for robot safety such as warning lamps, etc.
 8. The SAM phantom enabling testing left-hand right-hand and body usage.
 9. The Position device for handheld EUT.
 10. Tissue simulating liquid mixed according to the given recipes (see Application Note).
- System validation dipoles to validate the proper functioning of the system.

6.2 SYSTEM COMPONENTS

SN11/09 EP100 Probe Specification

Construction Symmetrical design with triangular core

Built-in optical fiber for surface detection System

Built-in shielding against static charges

Calibration in air from 100 MHz to 2.5 GHz

In brain and muscle simulating tissue at frequencies of 835 MHz, 897MHz, 1747 MHz, 1880 MHz, 1950 MHz and 1.8 GHz (accuracy of $\pm 8\%$)

Frequency 100 MHz to $> 30\text{GHz}$; Linearity: $\pm 0.25\text{ dB}$ (100 MHz to 30 GHz)

Directivity $\pm 0.25\text{ dB}$ in brain tissue (rotation around probe axis)

$\pm 0.5\text{ dB}$ in brain tissue (rotation normal probe axis)

Dynamic 0.001W/kg to $> 100\text{ W/kg}$;

Range Linearity: $\pm 0.25\text{ dB}$

Surface $\pm 0.2\text{ mm}$ repeatability in air and clear liquids

Detection over diffuse reflecting surfaces

Dimensions Overall length: 330 mm

Tip length: 16 mm

Body diameter: 8 mm

Tip diameter: 6.5 mm

Distance from probe tip to dipole centers: $< 2.7\text{ mm}$

Application General dosimetric up to 3 GHz

Compliance tests of mobile phones

Fast automatic scanning in arbitrary phantoms

The SAR measurements were conducted with the dosimetric probe SN11/09 EP100 designed in the classical triangular configuration and optimized for dosimetric evaluation. The probe is constructed using the thick film technique, with printed resistive lines on ceramic substrates. The probe is equipped with an optical multi-fiber line ending at the front of the probe tip. It is connected to the KRC box on the robot arm and provides an automatic detection of the phantom surface. Half of the fibers are connected to a pulsed infrared transmitter, the other half to a synchronized receiver. As the probe approaches the surface, the reflection from the surface produces a coupling from the transmitting to the receiving fibers. This reflection increases first during the approach, reaches maximum and then decreases. If the probe is flatly touching the surface, the coupling is zero. The distance of the coupling maximum to the surface is independent of the surface reflectivity and largely independent of the surface to probe angle. The OPENSAR software reads the reflection during a software approach and looks for the maximum using a 2nd order fitting. The approach is stopped when reaching the maximum.



**Inside View of
SN11/09 EP100 E-field
Probe**

E-Field Probe Calibration Process

Each probe is calibrated according to a dosimetric assessment procedure described in [6] with accuracy better than +/- 10%. The spherical isotropy was evaluated with the procedure described in [7] and found to be better than +/-0.25dB. The sensitivity parameters (NormX, NormY, NormZ), the diode compression parameter (DCP) and the conversion factor (ConvF) of the probe are tested.

The free space E-field from amplified probe outputs is determined in a test chamber. This is performed in a TEM cell for frequencies below 1 GHz, and in a waveguide above 1 GHz for free space. For the free space calibration, the probe is placed in the volumetric center of the cavity and at the proper orientation with the field. The probe is then rotated 360 degrees.

E-field temperature correlation calibration is performed in a flat phantom filled with the appropriate simulated brain tissue. The measured free space E-field in the medium correlates to temperature rise in dielectric medium. For temperature correlation calibration a RF transparent thermistor-based temperature probe is used in conjunction with the E-field probe.

SAM Phantom

The SAM Phantom SAM29 is constructed of a fiberglass shell integrated in a wooden table. The shape of the shell is in compliance with the specification set in IEEE P1528 and CENELEC EN62209-1. The phantom enables the dosimetric evaluation of left and right hand phone usage as well as body mounted usage at the flat phantom region. A cover prevents the evaporation of the liquid. Reference markings on the Phantom allow the complete setup of all predefined phantom positions and measurement grids by manually teaching three points in the robot.



SAM Phantom

Shell Thickness: 2 ± 0.2 mm

Filling Volume: Approx. 25 liters

Dimensions (H x L x W): 810 x 1000 x 500 mm

Device Holder for Transmitters

In combination with the Generic Twin Phantom V3.0, the Mounting Device enables the rotation of the mounted transmitter in spherical coordinates whereby the rotation points is the ear opening. The devices can be easily, accurately, and repeatedly positioned according to the FCC and CENELEC specifications. The device holder can be locked at different phantom locations (left head, right head, flat phantom).

Note: A simulating human hand is not used due to the complex anatomical and geometrical structure of the hand that may produced infinite number of configurations [10]. To produce the worst-case condition (the hand absorbs antenna output power), the hand is omitted during the tests.



7. EVALUATION PROCEDURES

DATA EVALUATION

The OPENSAR4 post processing software automatically executes the following procedures to calculate the field units from the microvolt readings at the probe connector. The parameters used in the evaluation are stored in the configuration modules of the software:

Probe parameters:	- Sensitivity	$Norm_i, a_{i0}, a_{i1}, a_{i2}$
	- Conversion factor	$ConvF_i$
	- Diode compression point	dcp_i
Device parameters:	- Frequency	f
	- Crest factor	cf
Media parameters:	- Conductivity	σ
	- Density	ρ

These parameters must be set correctly in the software. They can be found in the component documents or be imported into the software from the configuration files issued for the OPENSAR components. In the direct measuring mode of the multi-meter option, the parameters of the actual system setup are used. In the scan visualization and export modes, the parameters stored in the corresponding document files are used.

The first step of the evaluation is a linearization of the filtered input signal to account for the compression characteristics of the detector diode. The compensation depends on the input signal, the diode type and the DC-transmission factor from the diode to the evaluation electronics. If the exciting field is pulsed, the crest factor of the signal must be known to correctly compensate for peak power. The formula for each channel can be given as:

$$V_i = U_i + U_i^2 \cdot \frac{cf}{dcp_i}$$

with	V_i	= Compensated signal of channel i	(i = x, y, z)
	U_i	= Input signal of channel i	(i = x, y, z)
	cf	= Crest factor of exciting field	(OPENSAR parameter)
	dcp_i	= Diode compression point	(OPENSAR parameter)

From the compensated input signals the primary field data for each channel can be evaluated:

E-field probes:

$$E_i = \sqrt{\frac{V_i}{Norm_i \cdot ConvF}}$$

H-field probes:

$$H_i = \sqrt{V_i} \cdot \frac{a_{i10} + a_{i11}f + a_{i12}f^2}{f}$$

with	V_i	= Compensated signal of channel i	(i = x, y, z)
	$Norm_i$	= Sensor sensitivity of channel i	(i = x, y, z)
		$\mu V/(V/m)^2$ for E0field Probes	
	$ConvF$	= Sensitivity enhancement in solution	
	a_{ij}	= Sensor sensitivity factors for H-field probes	
	f	= Carrier frequency (GHz)	
	E_i	= Electric field strength of channel i in V/m	
	H_i	= Magnetic field strength of channel i in A/m	

The RSS value of the field components gives the total field strength (Hermitian magnitude):

$$E_{tot} = \sqrt{E_x^2 + E_y^2 + E_z^2}$$

The primary field data are used to calculate the derived field units.



$$SAR = E_{tot}^2 \cdot \frac{\sigma}{\rho \cdot 1000}$$

- with SAR = local specific absorption rate in mW/g
 E_{tot} = total field strength in V/m
 σ = conductivity in [mho/m] or [Siemens/m]
 ρ = equivalent tissue density in g/cm³

Note that the density is normally set to 1 (or 1.06), to account for actual brain density rather than the density of the simulation liquid.

The power flow density is calculated assuming the excitation field as a free space field.

$$P_{pwe} = \frac{E_{tot}^2}{3770} \quad \text{or} \quad P_{pwe} = H_{tot}^2 \cdot 37.7$$

- with P_{pwe} = Equivalent power density of a plane wave in mW/cm²
 E_{tot} = total electric field strength in V/m
 H_{tot} = total magnetic field strength in A/m



SAR EVALUATION PROCEDURES

The procedure for assessing the peak spatial-average SAR value consists of the following steps:

- **Power Reference Measurement**

The reference and drift jobs are useful jobs for monitoring the power drift of the device under test in the batch process. Both jobs measure the field at a specified reference position, at a selectable distance from the phantom surface. The reference position can be either the selected section's grid reference point or a user point in this section. The reference job projects the selected point onto the phantom surface, orients the probe perpendicularly to the surface, and approaches the surface using the selected detection method.

- **Area Scan**

The area scan is used as a fast scan in two dimensions to find the area of high field values, before doing a finer measurement around the hot spot. The sophisticated interpolation routines implemented in OPENSAR software can find the maximum locations even in relatively coarse grids. The scan area is defined by an editable grid. This grid is anchored at the grid reference point of the selected section in the phantom. When the area scan's property sheet is brought-up, grid was at to 15 mm by 15 mm and can be edited by a user.

- **Zoom Scan**

Zoom scans are used to assess the peak spatial SAR values within a cubic averaging volume containing 1 g and 10 g of simulated tissue. The default zoom scan measures 5 x 5 x 7 points within a cube whose base faces are centered around the maximum found in a preceding area scan job within the same procedure. If the preceding Area Scan job indicates more than one maximum, the number of Zoom Scans has to be enlarged accordingly (The default number inserted is 1).

- **Power Drift measurement**

The drift job measures the field at the same location as the most recent reference job within the same procedure, and with the same settings. The drift measurement gives the field difference in dB from the reading conducted within the last reference measurement. Several drift measurements are possible for one reference measurement. This allows a user to monitor the power drift of the device under test within a batch process. In the properties of the Drift job, the user can specify a limit for the drift and have OPENSAR software stop the measurements if this limit is exceeded.



SPATIAL PEAK SAR EVALUATION

The procedure for spatial peak SAR evaluation has been implemented according to the IEEE1529 standard. It can be conducted for 1 g and 10 g.

The OPENSAR4 system allows evaluations that combine measured data and robot positions, such as:

- maximum search
- extrapolation
- boundary correction
- peak search for averaged SAR

During a maximum search, global and local maximum searches are automatically performed in 2-D after each Area Scan measurement with at least 6 measurement points. It is based on the evaluation of the local SAR gradient calculated by the Quadratic Shepard's method. The algorithm will find the global maximum and all local maxima within -2 dB of the global maxima for all SAR distributions.

Extrapolation

Extrapolation routines are used to obtain SAR values between the lowest measurement points and the inner phantom surface. The extrapolation distance is determined by the surface detection distance and the probe sensor offset. Several measurements at different distances are necessary for the extrapolation.

Extrapolation routines require at least 10 measurement points in 3-D space. They are used in the Cube Scan to obtain SAR values between the lowest measurement points and the inner phantom surface. The routine uses the modified Quadratic Shepard's method for extrapolation. For a grid using 5x5x7 measurement points with 5mm resolution amounting to 343 measurement points, the uncertainty of the extrapolation routines is less than 1% for 1 g and 10 g cubes.

Boundary effect

For measurements in the immediate vicinity of a phantom surface, the field coupling effects between the probe and the boundary influence the probe characteristics. Boundary effect errors of different dosimetric probe types have been analyzed by measurements and using a numerical probe model. As expected, both methods showed an enhanced sensitivity in the immediate vicinity of the boundary. The effect strongly depends on the probe dimensions and disappears with increasing distance from the boundary. The sensitivity can be approximately given as:

$$S \approx S_o + S_b \exp\left(-\frac{z}{a}\right) \cos\left(\pi \frac{z}{\lambda}\right)$$

Since the decay of the boundary effect dominates for small probes ($a \ll \lambda$), the cos-term can be omitted. Factors S_b (parameter Alpha in the OPENSAR software) and a (parameter Delta in the OPENSAR software) are assessed during probe calibration and used for numerical compensation of the boundary effect. Several simulations and measurements have confirmed that the compensation is valid for different field and boundary configurations.

This simple compensation procedure can largely reduce the probe uncertainty near boundaries. It works well as long as:

- the boundary curvature is small
- the probe axis is angled less than 30° to the boundary normal
- the distance between probe and boundary is larger than 25% of the probe diameter
- the probe is symmetric (all sensors have the same offset from the probe tip)

Since all of these requirements are fulfilled in a OPENSAR system, the correction of the probe boundary effect in the vicinity of the phantom surface is performed in a fully automated manner via the measurement data extraction during post processing.

8. MEASUREMENT UNCERTAINTY

UNCERTAINTY EVALUATION FOR HANDSET SAR TEST

a	b	c	d	e= f(d,k)	f	g	h= c _x f/e	i= c _y g/e	k
Uncertainty Component	Sec.	Tol. (± %)	Prob. Dist.	Div.	c _i (1 g)	c _i (10 g)	1 g u _i (± %)	10 g u _i (± %)	v _i
Measurement System									
Probe Calibration	E.2.1.	7	N	1	1	1	7	7	∞
Axial Isotropy	E.2.2.	2,5	R	√3	(1-c _p) ^{1/2}	(1-c _p) ^{1/2}	1,02062	1,02062	∞
Hemispherical Isotropy	E.2.2.	4	R	√3	√C _p	√C _p	1,63299	1,63299	∞
Boundary Effect	E.2.3.	1	R	√3	1	1	0,57735	0,57735	∞
Linearity	E.2.4.	5	R	√3	1	1	2,88675	2,88675	∞
System Detection Limits	E.2.5.	1	R	√3	1	1	0,57735	0,57735	∞
Readout Electronics	E.2.6.	0,02	N	1	1	1	0,02	0,02	∞
Response Time	E.2.7.	3	R	√3	1	1	1,73205	1,73205	∞
Integration Time	E.2.8.	2	R	√3	1	1	1,1547	1,1547	∞
RF Ambient Conditions	E.6.1.	3	R	√3	1	1	1,73205	1,73205	∞
Probe Positioner Mechanical Tolerance	E.6.2.	2	R	√3	1	1	1,1547	1,1547	∞
Probe Positioning with respect to Phantom Shell	E.6.3.	0,05	R	√3	1	1	0,02887	0,02887	∞
Extrapolation, interpolation and Integration Algorithms for Max. SAR Evaluation	E.5.2.	5	R	√3	1	1	2,88675	2,88675	∞
Test sample Related									
Test Sample Positioning	E.4.2.1.	0,03	N	1	1	1	0,03	0,03	N-1
Device Holder Uncertainty	E.4.1.1.	5	N	1	1	1	5	5	N-1
Output Power Variation - SAR drift measurement	6.6.2.	3	R	√3	1	1	1,73205	1,73205	∞
Phantom and Tissue Parameters									
Phantom Uncertainty (shape and thickness tolerances)	E.3.1.	0,05	R	√3	1	1	0,02887	0,02887	∞
Liquid Conductivity - deviation from target values	E.3.2.	5	R	√3	0,64	0,43	1,84752	1,2413	∞
Liquid Conductivity - measurement uncertainty	E.3.3.	5	N	1	0,64	0,43	3,2	2,15	M
Liquid Permittivity - deviation from target values	E.3.2.	3	R	√3	0,6	0,49	1,03923	0,8487	∞
Liquid Permittivity - measurement uncertainty	E.3.3.	10	N	1	0,6	0,49	6	4,9	M
Combined Standard Uncertainty			RSS				11,1265	10,5799	
Expanded Uncertainty (95% CONFIDENCE INTERVAL)			k=2				21,8079	20,7366	



9. EXPOSURE LIMIT

(A). Limits for Occupational/Controlled Exposure (W/kg)

Whole-Body	<u>Partial-Body</u>	Hands, Wrists, Feet and Ankles
0.4	8.0	20.0

(B). Limits for General Population/Uncontrolled Exposure (W/kg)

Whole-Body	Partial-Body	Hands, Wrists, Feet and Ankles
0.08	1.6	4.0

Note: *Whole-Body SAR is averaged over the entire body, **partial-body SAR** is averaged over any 1 gram of tissue defined as a tissue volume in the shape of a cube. **SAR for hands, wrists, feet and ankles** is averaged over any 1 grams of tissue defined as a tissue volume in the shape of a cube.*

Population/Uncontrolled Environments are defined as locations where there is the exposure of individuals who have no knowledge or control of their exposure.

Occupational/Controlled Environments are defined as locations where there is exposure that may be incurred by people who are aware of the potential for exposure, (i.e. as a result of employment or occupation).

NOTE
GENERAL POPULATION/UNCONTROLLED EXPOSURE
PARTIAL BODY LIMIT
1.6 W/kg

10. EUT ARRANGEMENT

Please refer to IEEE P1528 illustration below.

10.1 ANTHROPOMORPHIC HEAD PHANTOM

Figure 7-1a shows the front, back and side views of SAM. The point “M” is the reference point for the center of mouth, “LE” is the left ear reference point (ERP), and “RE” is the right ERP. The ERPs are 15 mm posterior to the entrance to ear canal (EEC) along the B-M line (Back-Mouth), as shown in Figure 7-1b. The plane passing through the two ear reference points and M is defined as the Reference Plane. The line N-F (Neck-Front) perpendicular to the reference plane and passing through the RE (or LE) is called the Reference Pivoting Line (see Figure 7-1c). Line B-M is perpendicular to the N-F line. Both N-F and B-M lines should be marked on the external phantom shell to facilitate handset positioning. Posterior to the N-F line, the thickness of the phantom shell with the shape of an ear is a flat surface 6 mm thick at the ERPs. Anterior to the N-F line, the ear is truncated as illustrated in Figure 7-1b. The ear truncation is introduced to avoid the handset from touching the ear lobe, which can cause unstable handset positioning at the cheek.

Figure 7-1a

Front, back and side view of SAM (model for the phantom shell)



Figure 7-1b

Close up side view of phantom showing the ear region

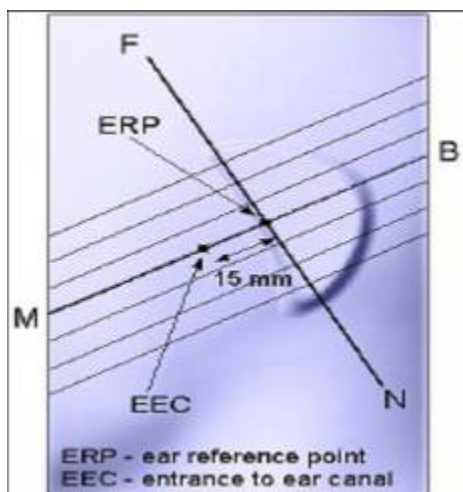


Figure 7-1b

Close up side view of phantom showing the ear region

Figure 7-1c

Side view of the phantom showing relevant markings and the 7 cross sectional plane locations

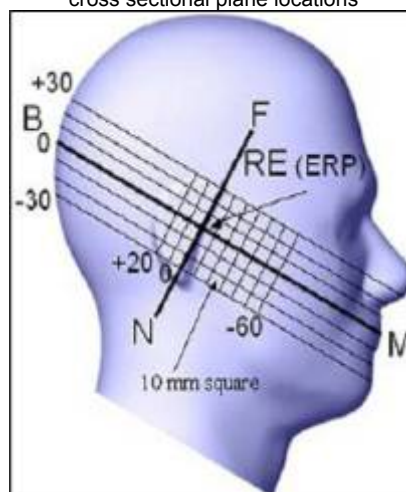


Figure 7-1c

Side view of the phantom showing relevant markings and the 7 cross sectional plane locations

10.2 DEFINITION OF THE “CHEEK/TOUCH” POSITION

The “cheek” or “touch” position is defined as follows:

- Ready the handset for talk operation, if necessary. For example, for handsets with a cover piece, open the cover. (If the handset can also be used with the cover closed both configurations must be tested.)
- Define two imaginary lines on the handset: the vertical centerline and the horizontal line. The vertical centerline passes through two points on the front side of the handset: the midpoint of the width w_t of the handset at the level of the acoustic output (point A on Figures 7-2a and 7-2b), and the midpoint of the width w_b of the bottom of the handset (point B). The horizontal line is perpendicular to the vertical centerline and passes through the center of the acoustic output (see Figure 7-2a). The two lines intersect at point A. Note that for many handsets, point A coincides with the center of the acoustic output. However, the acoustic output may be located elsewhere on the horizontal line. Also note that the vertical centerline is not necessarily parallel to the front face of the handset (see Figure 7-2b), especially for clamshell handsets, handsets with flip pieces, and other irregularly-shaped handsets.
- Position the handset close to the surface of the phantom such that point A is on the (virtual) extension of the line passing through points RE and LE on the phantom (see Figure 7-2c), such that the plane defined by the vertical center line and the horizontal line of the handset is approximately parallel to the sagittal plane of the phantom.
- Translate the handset towards the phantom along the line passing through RE and LE until the handset touches the pinna.
- e) While maintaining the handset in this plane, rotate it around the LE-RE line until the vertical centerline is in the plane normal to MB-NF including the line MB (called the reference plane).
- Rotate the handset around the vertical centerline until the handset (horizontal line) is symmetrical with respect to the line NF.
- While maintaining the vertical centerline in the reference plane, keeping point A on the line passing through RE and LE and maintaining the handset contact with the pinna, rotate the handset about the line NF until any point on the handset is in contact with a phantom point below the pinna (cheek). See Figure 7-2c. The physical angles of rotation should be noted.

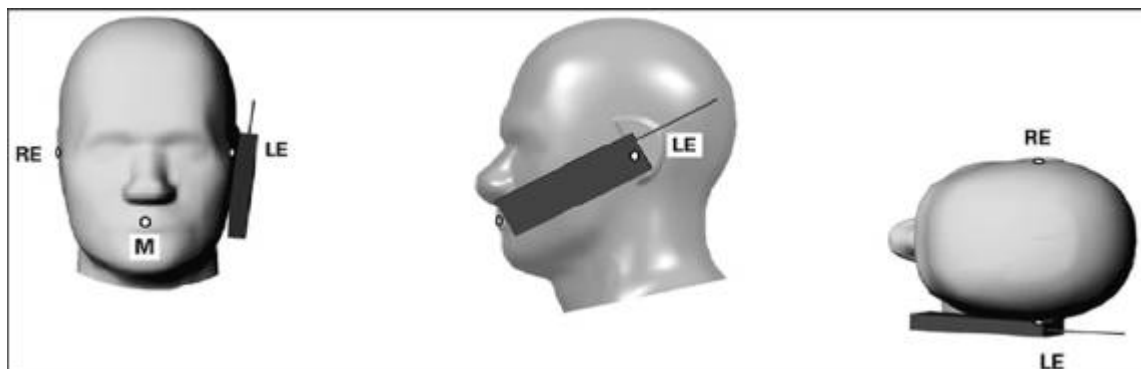


Figure 7.2c

Phone “cheek” or “touch” position. The reference points for the right ear (RE), left ear (LE) and mouth (M), which define the reference plane for handset positioning, are indicated.

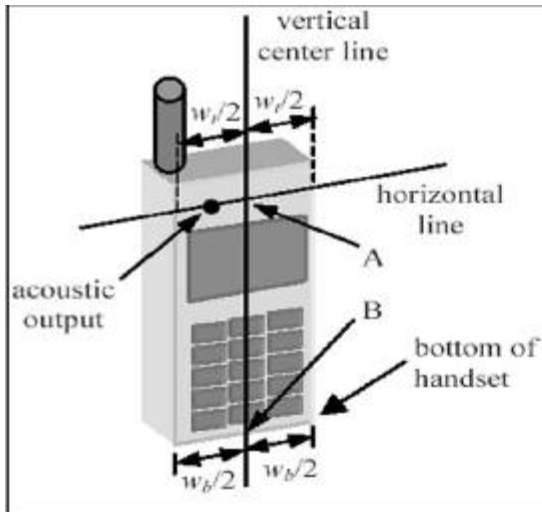


Figure 7.2a

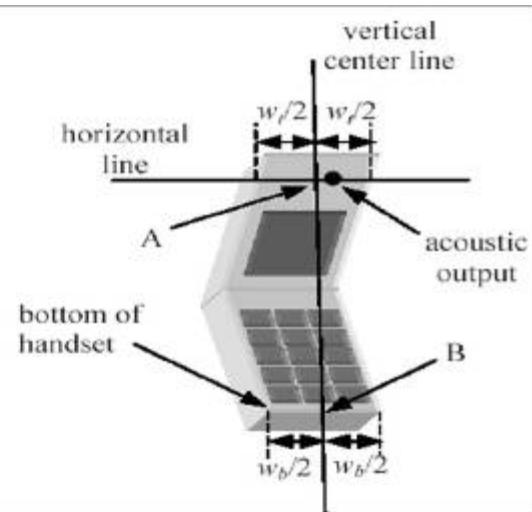


Figure 7.2b

10.3 DEFINITION OF THE “TILTED” POSITION

The “tilted” position is defined as follows:

- Repeat steps (a) – (g) of 7.2 to place the device in the “cheek position.”
- While maintaining the orientation of the handset move the handset away from the pinna along the line passing through RE and LE in order to enable a rotation of the handset by 15 degrees.
- Rotate the handset around the horizontal line by 15 degrees.
- While maintaining the orientation of the handset, move the handset towards the phantom on a line passing through RE and LE until any part of the handset touches the ear. The tilted position is obtained when the contact is on the pinna. If the contact is at any location other than the pinna (e.g., the antenna with the back of the phantom head), the angle of the handset should be reduced. In this case, the tilted position is obtained if any part of the handset is in contact with the pinna as well as a second part of the handset is contact with the phantom (e.g., the antenna with the back of the head).

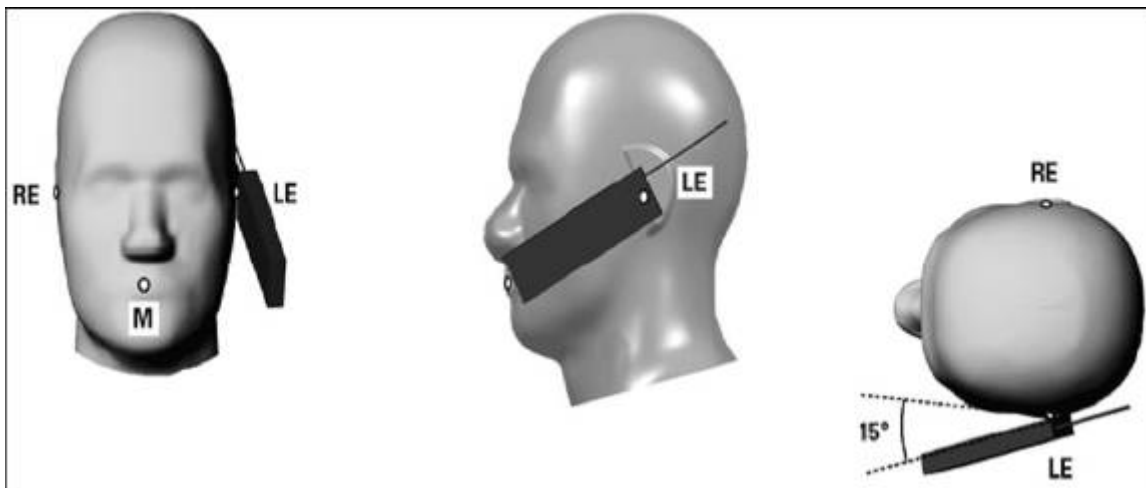


Figure 7-3

Phone “tilted” position. The reference points for the right ear (RE), left ear (LE) and mouth (M), which define the reference plane for handset positioning, are indicated.



11. MEASUREMENT RESULTS

11.1 TEST LIQUIDS CONFIRMATION

SIMULATED TISSUE LIQUID PARAMETER CONFIRMATION

The dielectric parameters were checked prior to assessment using the HP85070C dielectric probe kit. The dielectric parameters measured are reported in each correspondent section.

IEEE SCC-34/SC-2 P1528 RECOMMENDED TISSUE DIELECTRIC PARAMETERS

The head tissue dielectric parameters recommended by the IEEE SCC-34/SC-2 in P1528 have been incorporated in the following table. These head parameters are derived from planar layer models simulating the highest expected SAR for the dielectric properties and tissue thickness variations in a human head. Other head and body tissue parameters that have not been specified in P1528 are derived from the tissue dielectric parameters computed from the 4-Cole-Cole equations and extrapolated according to the head parameters specified in P1528

Target Frequency (MHz)	Head		Body	
	ϵ_r	σ (S/m)	ϵ_r	σ (S/m)
150	52.3	0.76	61.9	0.80
300	45.3	0.87	58.2	0.92
450	43.5	0.87	56.7	0.94
835	41.5	0.90	55.2	0.97
900	41.5	0.97	55.0	1.05
915	41.5	0.98	55.0	1.06
1450	40.5	1.20	54.0	1.30
1610	40.3	1.29	53.8	1.40
1800-2000	40.0	1.40	53.3	1.52
2450	39.2	1.80	52.7	1.95
3000	38.5	2.40	52.0	2.73
5800	45.3	5.27	48.2	6.00

(ϵ_r = relative permittivity, σ = conductivity and $\rho = 1000 \text{ kg/m}^3$)

LIQUID MEASUREMENT RESULTS

Ambient condition: Temperature: 21 °C

Relative humidity: 58%

Liquid Type	Frequency	Temp. [°C]	Depth [cm]	Parameters	Target	Measured	Deviation[%]	Limited[%]	Measured Date
Head850	835 MHz	20	15	Permittivity	41.50	41.46	-0.1	± 5	April 16,2010
		20	15	Conductivity	0.90	0.924	2.67	± 5	April 16,2010
Body850	835 MHz	20	15	Permittivity	55.20	56.51	2.37	± 5	April 16,2010
		20	15	Conductivity	0.97	0.979	0.93	± 5	April 16,2010
Head1900	1950 MHz	20	15	Permittivity	40.00	40.211	0.53	± 5	April 16,2010
		20	15	Conductivity	1.40	1.441	2.71	± 5	April 16,2010
Body1900	1950 MHz	20	15	Permittivity	53.30	52.95	-0.66	± 5	April 16,2010
		20	15	Conductivity	1.52	1.49	-1.97	± 5	April 16,2010
Head2450	2450 MHz	20	15	Permittivity	39.20	40.41	3.09	± 5	April 16,2010
		20	15	Conductivity	1.80	1.86	3.33	± 5	April 16,2010
Body2450	2450 MHz	20	15	Permittivity	52.70	51.52	-2.24	± 5	April 16,2010
		20	15	Conductivity	1.95	1.97	1.03	± 5	April 16,2010



11.2 SYSTEM PERFORMANCE CHECK

The system performance check is performed prior to any usage of the system in order to guarantee reproducible results. The system performance check verifies that the system operates within its specifications of $\pm 10\%$. The system performance check results are tabulated below. And also the corresponding SAR plot is attached as well in the SAR plots files.

SYSTEM PERFORMANCE CHECK MEASUREMENT CONDITIONS

- The measurements were performed in the flat section of the SAM twin phantom filled with head and body simulating liquid of the following parameters.
- The OPENSAR system with an E-field probe EP_100 SN:1109 was used for the measurements.
- The dipole was mounted on the small tripod so that the dipole feed point was positioned below the center marking of the flat phantom section and the dipole was oriented parallel to the body axis (the long side of the phantom). The standard measuring distance was 15 mm (below 1 GHz) and 10 mm (above 1 GHz) from dipole center to the simulating liquid surface.
- The coarse grid with a grid spacing of 10mm was aligned with the dipole.
- Special 7x7x7 fine cube was chosen for cube integration (dx= 5 mm, dy= 5 mm, dz= 5 mm).
- Distance between probe sensors and phantom surface was set to 2.5 mm.
- The dipole input power was $1W \pm 3\%$.
- The results are normalized to 1 W input power.

Reference SAR values

The reference SAR values were using measurement results indicated in the dipole calibration document (see table below)

Frequency (MHz)	1g SAR	10g SAR	Local SAR at Surface (Above Feed Point)	Local SAR at Surface (y = 2cm offset from feed point)
835 Head	9.41	6.27	14.1	4.9
835 Body	9.79	6.63		
1950 Head	41.35	21.39	67.6	6.6
1950 Body	38.95	20.51		
2450 Head	53.49	24.46	104.2	7.7
2450 Body	50.22	23.04		

**SYSTEM PERFORMANCE CHECK RESULTS****Ambient conduction**Temperature: 21 °CRelative humidity: 58%**System Validation Dipole:** DIPOLE850 SN:SN 48/05 DIPC32 **Date:** April 16, 2010

Medium			Parameter	Target	Measured	Deviation (%)	Limit (%)
Type	Temp (°C)	Depth (± 0.5 cm)					
Head 835 MHz	20.00	15.00	1g SAR	9.41	9.55	1.49	± 10
			10g SAR	6.27	6.151	1.90	± 10

Temperature: 21 °CRelative humidity: 58%**System Validation Dipole:** DIPOLE850SN:SN 48/05 DIPC32 **Date:** April 16, 2010

Medium			Parameter	Target	Measured	Deviation (%)	Limit (%)
Type	Temp (°C)	Depth (± 0.5 cm)					
Body 835 MHz	20.00	15.00	1g SAR	9.79	9.683	-1.12	± 10
			10g SAR	6.63	6.545	1.28	± 10

Temperature: 21 °CRelative humidity: 58%**System Validation Dipole:** DIPOLE1900 SN:SN 48/05 DIPI36 **Date:** April 16, 2010

Medium			Parameter	Target	Measured	Deviation (%)	Limit (%)
Type	Temp (°C)	Depth (± 0.5 cm)					
Head 1950 MHz	20.00	15.00	1g SAR	41.35	40.212	2.75	± 10
			10g SAR	21.39	21.435	-0.21	± 10

Temperature: 21 °CRelative humidity: 58%**System Validation Dipole:** DIPOLE1900 SN: SN 48/05 DIPI36 **Date:** April 16, 2010

Medium			Parameter	Target	Measured	Deviation (%)	Limit (%)
Type	Temp (°C)	Depth (± 0.5 cm)					
Body 1950 MHz	20.00	15.00	1g SAR	38.95	38.978	-0.07	± 10
			10g SAR	20.51	20.722	-1.03	± 10

Temperature: 21 °CRelative humidity: 58%**Dipole:** DIPOLE2450 SN:SN 48/05 DIPJ37**Date:** April 16, 2010

Medium			Parameter	Target	Measured	Deviation (%)	Limit (%)
Type	Temp (°C)	Depth (± 0.5 cm)					
Head 2450 MHz	20.00	15.00	1g SAR	53.49	51.22	-4.24	± 5
			10g SAR	24.46	23.726	3.00	± 5

Temperature: 21 °CRelative humidity: 58%**Dipole:** DIPOLE2450 SN:SN 48/05 DIPJ37**Date:** April 16, 2010

Medium			Parameter	Target	Measured	Deviation (%)	Limit (%)
Type	Temp (°C)	Depth (± 0.5 cm)					
Body 2450 MHz	20.00	15.00	1g SAR	50.22	48.80	-2.83	± 5
			10g SAR	23.04	22.564	2.07	± 5

11.3 EUT TUNE-UP PROCEDURES AND TEST MODE

The following procedure had been used to prepare the EUT for the SAR test.

a. To setup the desire channel frequency and the maximum output power. A Radio Communication Tester “CMU200 ” was used to program the EUT.

GSM 850 / GPRS850 / EDGE850:

Network Support: GSM only / GPRS / EDGE

Main Service: Circuit Switched / Packet data

Power Setting: 33dBm / 33dBm / 27dBm

Class: B

Class: 12 (4 Up / 1 Down)

GSM 1900 / GPRS 1900 / EDGE 1900:

Network Support: GSM only / GPRS / EDGE

Main Service: Circuit Switched / Packet data

Power Setting: 30dBm / 30dBm / 26dBm

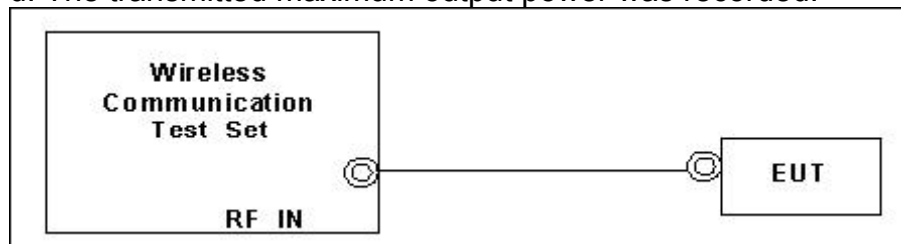
Class: B

Class: 12 (4 Up / 1 Down)

b. Maximum conducted power was measured by replacing the antenna with an adapter for conductive measurement.

WCDMA Setup Configuration:

- a. The EUT was connected to Base Station referred to the drawing of Setup Configuration.
- b. The RF path losses were compensated into the measurements.
- c. A call was established between EUT and Base Station with following setting
 - i. Data rates: Varied from RMC 12.2Kbps.
 - ii. RMC Test Loop=Loop Mode 1
 - iii. Power Ctrl Mode= All Up bits.
- d. The transmitted maximum output power was recorded.



Setup Configuration

HSDPA Setup Configuration:

- a. The EUT was connected to Base Station referred to the drawing of Setup Configuration.
- b. The RF path losses were compensated into the measurements.
- c. A call was established between EUT and Base Station with following setting:
 - i. Set Gain Factors(β_c , and β_d) and parameters were set according to each
 - ii. Specific sub-test in the following table, C10.1.4, quoted from the TS 34.121.
 - iii. Set RMC12.2Kbps + HSDPA mode.
 - iv. Set Cell Power = -86 dBm

- v. Set HS-DSCH Configuration Type to FRC (H-set 1, QPSK)
 - vi. Select HSDPA Uplink Parameters.
 - vii. Set DeltaACK , DeltaNACK and DeltaCQI =8.
 - viii. Set Ack-Nack Repetition Factor to 3
 - ix. Set CQI Feedback Cycle (k) to 4 ms
 - x. Set CQI Repetition Factor to 2 .
 - xi. Power Ctrl Mode= All Up bits.
- d. The transmitted maximum output power was recorded.

Table C.10.1.4: β values for transmitter characteristics tests with HS-DPCCH

Sub-test	β_c	β_d	β_d (SF)	β_c/β_d	β_{HS} (Note 1, Note 2)	CM (dB) (Note 3)	MPR (dB) (Note 3)
1	2/15	15/15	64	2/15	4/15	0.0	0.0
2	12/15 (Note 4)	15/15 (Note 4)	64	12/15 (Note 4)	24/15	1.0	0.0
3	15/15	8/15	64	15/8	30/15	1.5	0.5
4	15/15	4/15	64	15/4	30/15	1.5	0.5

Note 1: Δ_{ACK} , Δ_{NACK} and $\Delta_{CQI} = 30/15$ with $\beta_{HS} = 30/15 * \beta_c$.

Note 2: For the HS-DPCCH power mask requirement test in clause 5.2C, 5.7A, and the Error Vector Magnitude (EVM) with HS-DPCCH test in clause 5.13.1A, and HSDPA EVM with phase discontinuity in clause 5.13.1AA, Δ_{ACK} and $\Delta_{NACK} = 30/15$ with $\beta_{HS} = 30/15 * \beta_c$, and $\Delta_{CQI} = 24/15$ with $\beta_{HS} = 24/15 * \beta_c$.

Note 3: CM = 1 for $\beta_c/\beta_d = 12/15$, $\beta_{HS}/\beta_c = 24/15$. For all other combinations of DPCCH, DPCCH and HS-DPCCH the MPR is based on the relative CM difference. This is applicable for only UEs that support HSDPA in release 6 and later releases.

Note 4: For subtest 2 the β_c/β_d ratio of 12/15 for the TFC during the measurement period (TF1, TF0) is achieved by setting the signalled gain factors for the reference TFC (TF1, TF1) to $\beta_c = 11/15$ and $\beta_d = 15/15$.

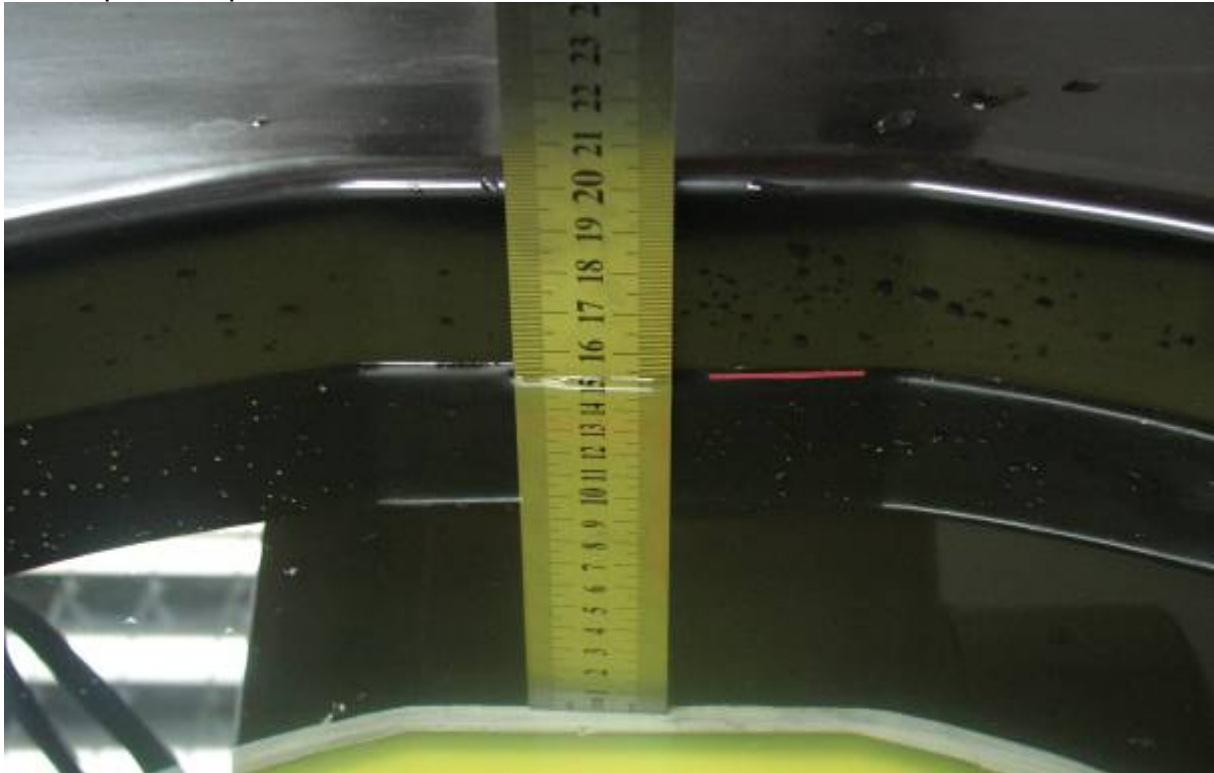
Setup Configuration

Bluetooth & WIFI (IEEE802.11b/g)

- a. The client supplied a special driver to program the EUT, allowing it to continually transmit the specified maximum power and change the channel frequency.
- c. The conducted power was measured at the high, middle and low channel frequency before and after the SAR measurement.
- d. During SAR test, the highest output channel per band measured first, and then if necessary, the other channels were measured according to the normal procedures.



The depth of Liquid must above 15cm.





11.4 CONDUCTED OUTPUT POWER

Conducted output power (Average):

Band Channel Mode	GSM850 (dBm)			GSM1900 (dBm)		
	Ch 128	Ch 190	Ch 251	Ch 512	Ch 661	Ch 810
GSM	32.82	32.51	32.41	30.42	30.62	30.71
GPRS 12 (4 uplink)	32.92	32.62	32.52	28.81	29.11	29.22
EGPRS 12 (4 uplink)	27.76	27.46	27.35	26.02	26.31	26.42

Conducted Output Power(Average):

The EUT was tested according to the requirements of the FCC 3G procedures and the TS 34.121. The EUT's WCDMA function is Release 5 version supporting HSDPA. A detailed analysis of the output power for all WCDMA, HSPDA modes is provided in the tables below.

According to the FCC 3G procedures, handsets with both HSDPA should be tested according to Release 5 HSDPA test procedures, Device was tested according to procedure KDB941225 - section Release 5 HSDPA Data Devices as documented/evaluated in the following table. Power values for HSDPA are less than ¼ dB higher than the basic 12.2 kbps RMC configurations in WCDMA.

Band Channel Mode		WCDMA Band V (dBm)			WCDMA Band II (dBm)		
		Ch 4132	Ch 4182	Ch 4233	Ch 9262	Ch 9400	Ch 9538
12.2K		24.53	23.57	23.96	23.94	23.96	24.16
12.2K+HSDPA	Subtest-1	22.49	22.47	22.43	22.04	22.09	22.30
	Subtest-2	22.31	22.37	22.32	21.91	22.02	22.23
	Subtest-3	21.93	21.85	21.82	21.40	21.53	21.61
	Subtest-4	21.86	21.83	21.81	21.36	21.46	21.57

**802.11b/g output power (Average)(dBm)**

Mode Frequency	802.11b 1M	802.11g 6M
1(2412 MHz)	17.48	13.50
6(2437 MHz)	17.29	13.29
11(2462 MHz)	16.15	12.14

Ps. (1)17.48dBm=55.98mW is higher than 24.5mW(60/f), so **802.11b stand-alone SAR is required.**

(2)13.50dBm=22.39mW is less than 24.5mW(60/f), so **802.11g stand-alone SAR is not required.**

Bluetooth output power (Average)(dBm)

Mode Frequency	DATA1 1M	DATA3 3M
2402 MHz	-0.69	-3.28
2441 MHz	-0.15	-2.72
2480 MHz	-1.28	-3.87

Ps. (1)-0.15dBm=0.97mW is less than 24.58mW(60/f), so **Bluetooth stand-alone SAR is not required.**

**11.5 KDB 648474 SAR HANDSETS MULTI XMITER ASSESSMENT**

	GSM 850 head	GSM 850 body	GPRS 850 body	EDGE 850 body
GSM 850 SAR(worst)	0.275	0.196	0.612	0.469
802.11b SAR(worst)	0.221	0.101	0.101	0.101
Σ1g-SAR	0.496	0.297	0.713	0.570
remark	Less than 1.6W/kg(limit)	Less than 1.6W/kg(limit)	Less than 1.6W/kg(limit)	Less than 1.6W/kg(limit)

	GSM 1900 head	GSM 1900 body	GPRS 1900 body	EDGE 1900 body
GSM 1900 SAR(worst)	0.913	0.181	0.852	0.643
802.11b SAR(worst)	0.221	0.101	0.101	0.101
Σ1g-SAR	1.134	0.282	0.953	0.744
remark	Less than 1.6W/kg(limit)	Less than 1.6W/kg(limit)	Less than 1.6W/kg(limit)	Less than 1.6W/kg(limit)

	WCDMA band V head	WCDMA band V body	HSDPA band V body	WCDMA band II head	WCDMA band II body	HSDPA band II body
WCDMA SAR(worst)	0.325	0.201	0.197	0.903	0.189	0.185
802.11b SAR(worst)	0.221	0.101	0.101	0.221	0.101	0.101
Σ1g-SAR	0.546	0.302	0.298	1.124	0.290	0.286
remark	Less than 1.6W/kg(limit)	Less than 1.6W/kg(limit)	Less than 1.6W/kg(limit)	Less than 1.6W/kg(limit)	Less than 1.6W/kg(limit)	Less than 1.6W/kg(limit)

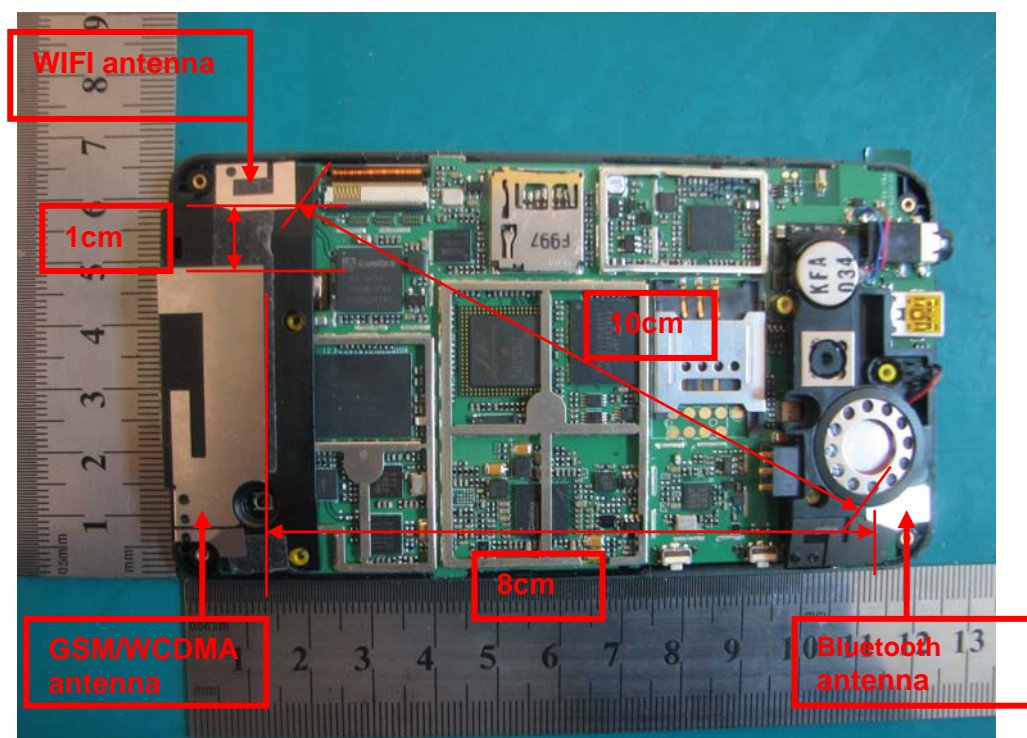
	head	body
Bluetooth SAR(worst)	0.000	0.000

KDB 648474 simultaneous SAR evaluation:**Antenna Location:**

antenna1	antenna2	antenna3	GSM/ WCDMA to Bluetooth antenna distance(cm)	GSM/ WCDMA to WIFI antenna distance(cm)	Bluetooth to WIFI antenna distance(cm)	remark
GSM/ WCDMA	Bluetooth	WIFI	8.00cm	1.00cm	10.00cm	Please refer to page 30

Device mode, f	P, dBm	P, mW	stand-alone SAR(W/kg)
GSM/WCDMA, 850/1900	Please refer to page 27		Yes , Please refer to page 33~40
WIFI, 802.11b	17.48	55.98	Yes , Please refer to page 41
WIFI, 802.11g	13.50	22.39	No , Please refer to page 28
Bluetooth, 2441	-0.15	0.97	No , Please refer to page 28

(x,y)	d_{xy} , cm	simultaneous Tx SAR	remarks
GSM/ WCDMA to Bluetooth antenna distance(cm)	8.00cm	No	$d_{xy} > 5\text{cm}$ the Sum of all 1-g SAR < 1.6 W/kg, please refer to page 28
Bluetooth to WIFI antenna distance(cm)	10.00cm	No	$d_{xy} > 5\text{cm}$ the Sum of all 1-g SAR < 1.6 W/kg, please refer to page 28
GSM/ WCDMA to WIFI antenna distance(cm)	1.00cm	No	the Sum of all 1-g SAR < 1.6 W/kg, please refer to page 28,29 and 41



11.6 EUT SETUP PHOTOS

EUT Setup Configuration 1

the back side of the EUT in body position with GSM/WCDMA/Wi-Fi



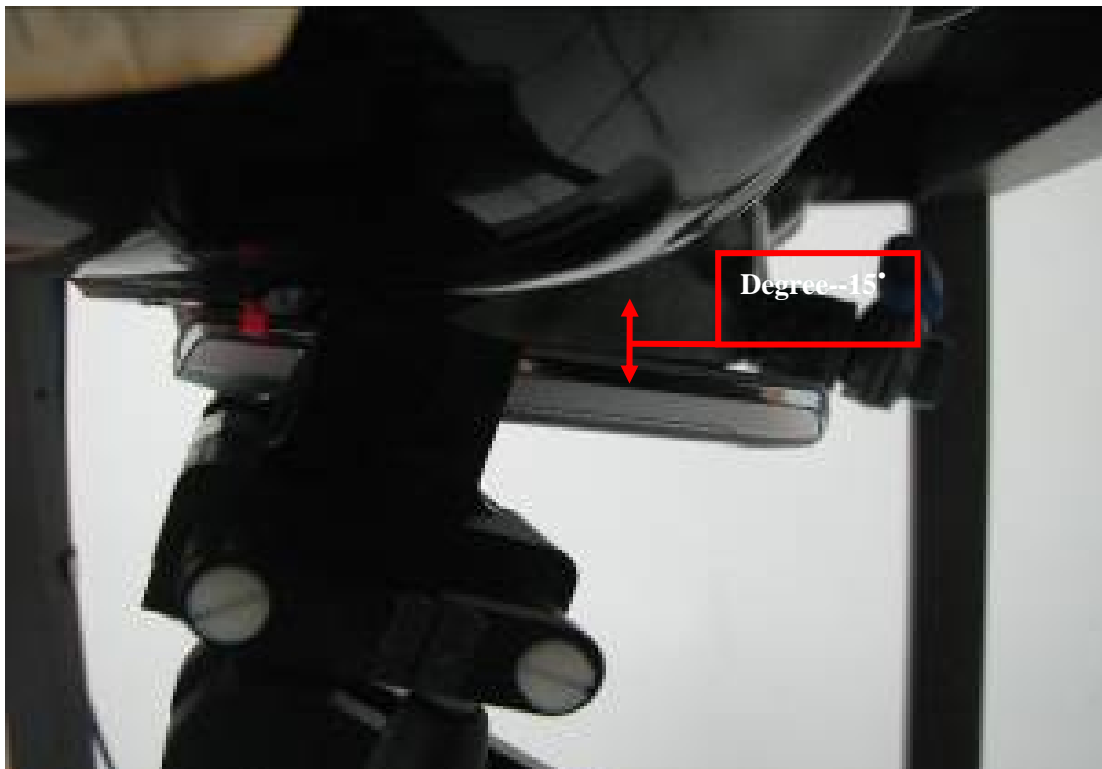
EUT Setup Configuration 2

Cheek device with head phantom.

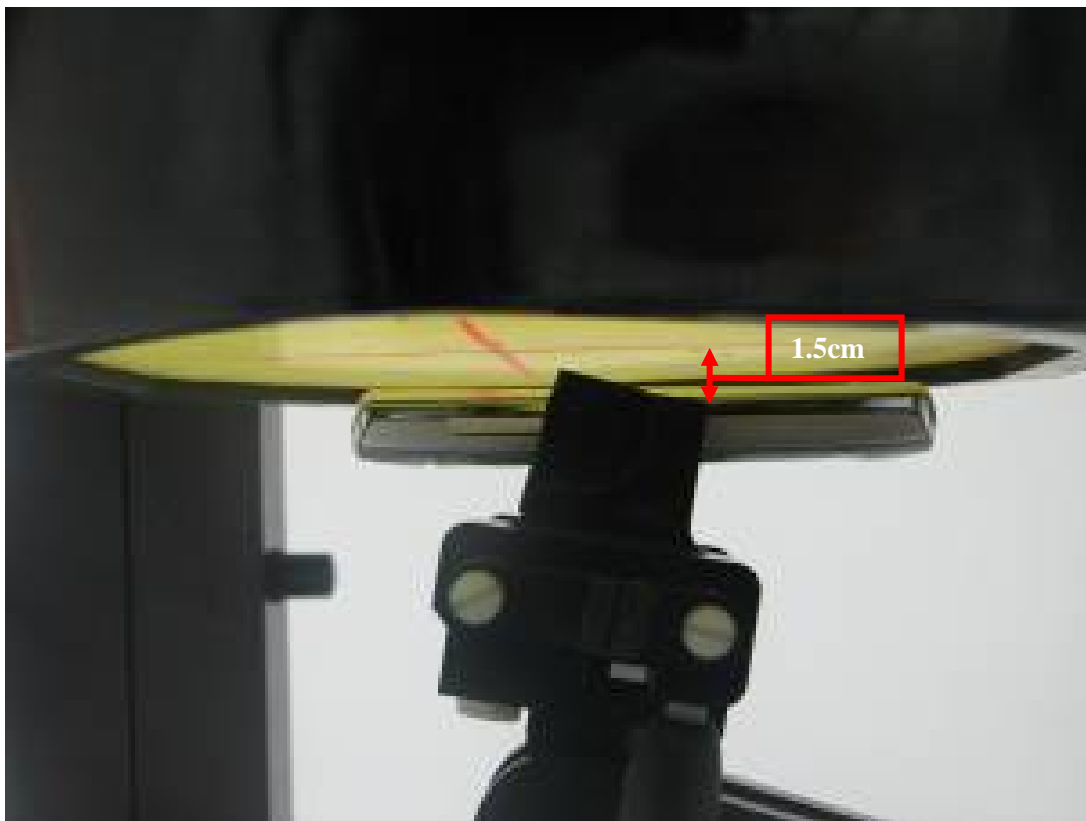


EUT Setup Configuration 3

Tilt device with head phantom.

**EUT Setup Configuration 4**

the back side of the EUT in body position with HSDPA/GPRS



**11.7 SAR MEASUREMENT RESULTS**

Date of Measurement: April 16, 2010

SAR Measurement GSM 850										
Crest Factor: <u>8</u> (Duty cycle: <u>12.5%</u>)							Depth of Liquid: <u>15.0</u> cm			
EUT Configuration 1										
EUT Setup Condition		Frequency		Conducted Power (dBm)		Liquid Temp [°C]	SAR(1g) (W/kg)	SAR(10g) (W/kg)	Limit (W/kg)	
Position	Antenna	Channel	MHz	Before	After					
Flat (1.5cm)	Fixed	128	824.2	32.82	32.77	20.0	0.185	0.086	1.6	
		180	836.6	32.51	32.47	20.0	0.196	0.103		
		251	848.8	32.41	32.38	20.0	0.188	0.093		
EUT Configuration 2										
EUT Setup Condition		Frequency		Conducted Power (dBm)		Liquid Temp [°C]	SAR(1g) (W/kg)	SAR(10g) (W/kg)	Limit (W/kg)	
Position	Antenna	Channel	MHz	Before	After					
cheek	Righthead	Fixed	128	824.2	32.82	32.77	20.0	0.245	0.101	1.6
			180	836.6	32.51	32.47	20.0	0.255	0.112	
			251	848.8	32.41	32.38	20.0	0.248	0.109	
	Left_head	Fixed	128	824.2	32.82	32.77	20.0	0.266	0.115	
			180	836.6	32.51	32.47	20.0	0.275	0.120	
			251	848.8	32.41	32.38	20.0	0.260	0.109	
EUT Configuration 3										
EUT Setup Condition		Frequency		Conducted Power (dBm)		Liquid Temp [°C]	SAR(1g) (W/kg)	SAR(10g) (W/kg)	Limit (W/kg)	
Position	Antenna	Channel	MHz	Before	After					
tilt	Righthead	Fixed	128	824.2	32.82	32.77	20.0	0.142	0.077	1.6
			180	836.6	32.51	32.47	20.0	0.163	0.089	
			251	848.8	32.41	32.38	20.0	0.150	0.081	
	Left_head	Fixed	128	824.2	32.82	32.77	20.0	0.162	0.110	
			180	836.6	32.51	32.47	20.0	0.198	0.122	
			251	848.8	32.41	32.38	20.0	0.172	0.102	

Remarks: For SAR testing, EUT is in GSM link mode. In GSM850 link mode, its crest factor is 8. (Duty cycle: 1:8)



Date of Measurement: April 16, 2010

SAR Measurement GPRS 850 Class 12									
Crest Factor: <u>2</u> (Duty cycle: <u>50%</u>)							Depth of Liquid: <u>15.0</u> cm		
EUT Configuration 4									
EUT Setup Condition		Frequency		Conducted Power (dBm)		Liquid Temp [°C]	SAR(1g) (W/kg)	SAR(10g) (W/kg)	Limit (W/kg)
Position	Antenna	Channel	MHz	Before	After				
Flat (1.5cm)	Fixed	128	824.2	32.92	32.87	20.0	0.532	0.205	1.6
		180	836.6	32.62	32.57	20.0	0.612	0.222	
		251	848.8	32.52	32.48	20.0	0.587	0.215	

Remarks: For SAR testing, EUT is in GPRS link mode. In GPRS850 link mode, its crest factor is 2. (Duty cycle: 1:2)

Date of Measurement: April 16, 2010

SAR Measurement EDGE 850 Class 12									
Crest Factor: <u>2</u> (Duty cycle: <u>50%</u>)						Depth of Liquid: <u>15.0</u> cm			
EUT Configuration 4									
EUT Setup Condition		Frequency		Conducted Power (dBm)		Liquid Temp [°C]	SAR(1g) (W/kg)	SAR(10g) (W/kg)	Limit (W/kg)
Position	Antenna	Channel	MHz	Before	After				
Flat (1.5cm)	Fixed	128	824.2	27.76	27.72	20.0	0.456	0.189	1.6
		180	836.6	27.46	27.43	20.0	0.469	0.197	
		251	848.8	27.35	27.31	20.0	0.461	0.192	

Remarks: For SAR testing, EUT is in GPRS link mode. In GPRS850 link mode, its crest factor is 2. (Duty cycle: 1:2)



Date of Measurement: April 16, 2010

SAR Measurement GSM 1900

Crest Factor: 8 (Duty cycle: 12.5%)

Depth of Liquid: 15.0 cm

EUT Configuration 1

EUT Setup Condition		Frequency		Conducted Power (dBm)		Liquid Temp [°C]	SAR(1g) (W/kg)	SAR(10g) (W/kg)	Limit (W/kg)
Position	Antenna	Channel	MHz	Before	After				
Flat (1.5cm)	Fixed	512	1850.2	30.42	30.38	20.0	0.155	0.096	1.6
		661	1880.0	30.62	30.58	20.0	0.181	0.104	
		810	1910.0	30.71	29.68	20.0	0.170	0.170	

EUT Configuration 2

EUT Setup Condition		Frequency		Conducted Power (dBm)		Liquid Temp [°C]	SAR(1g) (W/kg)	SAR(10g) (W/kg)	Limit (W/kg)
Position	Antenna	Channel	MHz	Before	After				
cheek	Righthand	Fixed	512	1850.2	30.42	30.38	20.0	0.654	1.6
			661	1880.0	30.62	30.58	20.0	0.680	
			810	1910.0	30.71	29.68	20.0	0.664	
	Left_head	Fixed	512	1850.2	30.42	30.38	20.0	0.886	
			661	1880.0	30.62	30.58	20.0	0.913	
			810	1910.0	30.71	29.68	20.0	0.894	

EUT Configuration 3

EUT Setup Condition		Frequency		Conducted Power (dBm)		Liquid Temp [°C]	SAR(1g) (W/kg)	SAR(10g) (W/kg)	Limit (W/kg)
Position	Antenna	Channel	MHz	Before	After				
tilt	Righthand	Fixed	512	1850.2	30.42	30.38	20.0	0.294	1.6
			661	1880.0	30.62	30.58	20.0	0.299	
			810	1910.0	30.71	29.68	20.0	0.289	
	Left_head	Fixed	512	1850.2	30.42	30.38	20.0	0.332	
			661	1880.0	30.62	30.58	20.0	0.369	
			810	1910.0	30.71	29.68	20.0	0.345	

Remarks: For SAR testing, EUT is in GSM link mode. In GSM1900 link mode, its crest factor is 8. (Duty cycle: 1:8)



Date of Measurement: April 16, 2010

SAR Measurement GPRS 1900 Class 12									
Crest Factor: <u>2</u> (Duty cycle: <u>50%</u>)							Depth of Liquid: <u>15.0</u> cm		
EUT Configuration 4									
EUT Setup Condition		Frequency		Conducted Power (dBm)		Liquid Temp [°C]	SAR(1g) (W/kg)	SAR(10g) (W/kg)	Limit (W/kg)
Position	Antenna	Channel	MHz	Before	After				
Flat (1.5cm)	Fixed	512	1850.2	28.81	28.77	20.0	0.832	0.611	1.6
		661	1880.0	29.11	29.07	20.0	0.852	0.634	
		810	1910.0	29.22	29.17	20.0	0.841	0.621	

Remarks: For SAR testing, EUT is in GPRS link mode. In GPRS 1900 link mode, its crest factor is 2. (Duty cycle: 1:2)

Date of Measurement: April 16, 2010

SAR Measurement EDGE 1900 Class 12									
Crest Factor: <u>2</u> (Duty cycle: <u>50%</u>)						Depth of Liquid: <u>15.0</u> cm			
EUT Configuration 4									
EUT Setup Condition		Frequency		Conducted Power (dBm)		Liquid Temp [°C]	SAR(1g) (W/kg)	SAR(10g) (W/kg)	Limit (W/kg)
Position	Antenna	Channel	MHz	Before	After				
Flat (1.5cm)	Fixed	512	1850.2	26.02	25.98	20.0	0.624	0.401	1.6
		661	1880.0	26.31	26.27	20.0	0.643	0.425	
		810	1910.0	26.42	26.38	20.0	0.635	0.412	

Remarks: For SAR testing, EUT is in GPRS link mode. In GPRS 1900 link mode, its crest factor is 2. (Duty cycle: 1:2)



Date of Measurement: April 16, 2010

SAR Measurement WCDMA BAND V

Crest Factor: 1 (Duty cycle: 100%)Depth of Liquid: 15.0 cm

EUT Configuration 1

EUT Setup Condition		Frequency		Conducted Power (dBm)		Liquid Temp [°C]	SAR(1g) (W/kg)	SAR(10g) (W/kg)	Limit (W/kg)
Position	Antenna	Channel	MHz	Before	After				
Flat (1.5cm)	Fixed	4132	826.4	24.53	24.49	20.0	0.186	0.091	1.6
		4182	836.4	23.57	23.53	20.0	0.201	0.105	
		4233	846.6	23.96	23.92	20.0	0.190	0.097	

EUT Configuration 2

EUT Setup Condition		Frequency		Conducted Power (dBm)		Liquid Temp [°C]	SAR(1g) (W/kg)	SAR(10g) (W/kg)	Limit (W/kg)
Position	Antenna	Channel	MHz	Before	After				
cheek	Righthead	Fixed	4132	826.4	24.53	24.49	20.0	0.244	1.6
			4182	836.4	23.57	23.53	20.0	0.258	
			4233	846.6	23.96	23.92	20.0	0.245	
	Left_head	Fixed	4132	826.4	24.53	24.49	20.0	0.271	
			4182	836.4	23.57	23.53	20.0	0.325	
			4233	846.6	23.96	23.92	20.0	0.267	

EUT Configuration 3

EUT Setup Condition		Frequency		Conducted Power (dBm)		Liquid Temp [°C]	SAR(1g) (W/kg)	SAR(10g) (W/kg)	Limit (W/kg)
Position	Antenna	Channel	MHz	Before	After				
tilt	Righthead	Fixed	4132	826.4	24.53	24.49	20.0	0.144	1.6
			4182	836.4	23.57	23.53	20.0	0.168	
			4233	846.6	23.96	23.92	20.0	0.154	
	Left_head	Fixed	4132	826.4	24.53	24.49	20.0	0.164	
			4182	836.4	23.57	23.53	20.0	0.200	
			4233	846.6	23.96	23.92	20.0	0.175	

Remarks: For SAR testing, EUT is in GSM link mode. In GSM850 link mode, its crest factor is 1.
(Duty cycle: 1:1)



Date of Measurement: April 16, 2010

SAR Measurement HSDPA BAND V

Crest Factor: 1 (Duty cycle: 100%)

Depth of Liquid: 15.0 cm**EUT Configuration 4**

EUT Setup Condition		Frequency		Conducted Power (dBm)		Liquid Temp [°C]	SAR(1g) (W/kg)	SAR(10g) (W/kg)	Limit (W/kg)
Position	Antenna	Channel	MHz	Before	After				
Flat (1.5cm)	Fixed	4132	826.4	22.49	22.45	20.0	0.183	0.090	1.6
		4182	836.4	22.47	22.43	20.0	0.197	0.116	
		4233	846.6	22.43	22.40	20.0	0.189	0.094	

Remarks: For SAR testing, EUT is in GSM link mode. In GSM850 link mode, its crest factor is 1.
(Duty cycle: 1:1)



Date of Measurement: April 16, 2010

SAR Measurement WCDMA BAND II

Crest Factor: 1 (Duty cycle: 100%)Depth of Liquid: 15.0 cm

EUT Configuration 1

EUT Setup Condition		Frequency		Conducted Power (dBm)		Liquid Temp [°C]	SAR(1g) (W/kg)	SAR(10g) (W/kg)	Limit (W/kg)
Position	Antenna	Channel	MHz	Before	After				
Flat (1.5cm)	Fixed	9262	1852.4	23.94	23.91	20.0	0.161	0.098	1.6
		9400	1880.0	23.96	23.92	20.0	0.189	0.111	
		9538	1907.6	24.16	24.12	20.0	0.179	0.101	

EUT Configuration 2

EUT Setup Condition		Frequency		Conducted Power (dBm)		Liquid Temp [°C]	SAR(1g) (W/kg)	SAR(10g) (W/kg)	Limit (W/kg)
Position	Antenna	Channel	MHz	Before	After				
cheek	Righthead	Fixed	9262	1852.4	23.94	23.91	20.0	0.655	1.6
			9400	1880.0	23.96	23.92	20.0	0.686	
			9538	1907.6	24.16	24.12	20.0	0.671	
	Left_head	Fixed	9262	1852.4	23.94	23.91	20.0	0.844	
			9400	1880.0	23.96	23.92	20.0	0.903	
			9538	1907.6	24.16	24.12	20.0	0.864	

EUT Configuration 3

EUT Setup Condition		Frequency		Conducted Power (dBm)		Liquid Temp [°C]	SAR(1g) (W/kg)	SAR(10g) (W/kg)	Limit (W/kg)
Position	Antenna	Channel	MHz	Before	After				
tilt	Righthead	Fixed	9262	1852.4	23.94	23.91	20.0	0.298	1.6
			9400	1880.0	23.96	23.92	20.0	0.315	
			9538	1907.6	24.16	24.12	20.0	0.277	
	Left_head	Fixed	9262	1852.4	23.94	23.91	20.0	0.333	
			9400	1880.0	23.96	23.92	20.0	0.371	
			9538	1907.6	24.16	24.12	20.0	0.351	

Remarks: For SAR testing, EUT is in GSM link mode. In GSM850 link mode, its crest factor is 1. (Duty cycle: 1:1)



Date of Measurement: April 15, 2010

SAR Measurement HSDPA BAND IICrest Factor: 1 (Duty cycle: 100%)Depth of Liquid: 15.0 cm**EUT Configuration 4**

EUT Setup Condition		Frequency		Conducted Power (dBm)		Liquid Temp [°C]	SAR(1g) (W/kg)	SAR(10g) (W/kg)	Limit (W/kg)
Position	Antenna	Channel	MHz	Before	After				
Flat (1.5cm)	Fixed	9262	1852.4	22.04	22.00	20.0	0.158	0.097	1.6
		9400	1880.0	22.09	22.06	20.0	0.185	0.110	
		9538	1907.6	22.30	22.26	20.0	0.169	0.106	

Remarks: For SAR testing, EUT is in GSM link mode. In GSM850 link mode, its crest factor is 1. (Duty cycle: 1:1)



Date of Measurement: April 16, 2010

SAR Measurement IEEE802.11b (WI-FI)

 Crest Factor: 1 (Duty cycle: 100%)

 Depth of Liquid: 15.0
cm

EUT Configuration 1

EUT Setup Condition		Frequency		Conducted Power (dBm)		Liquid Temp [°C]	SAR(1g) (W/kg)	SAR(10g) (W/kg)	Limit (W/kg)
Position	Antenna	Channel	MHz	Before	After				
Flat (1.5cm)	Fixed	1	2412	17.48	17.45	20.0	0.095	0.043	1.6
		6	2437	17.29	17.25	20.0	0.101	0.055	
		11	2462	16.15	16.11	20.0	0.099	0.046	

EUT Configuration 2

EUT Setup Condition		Frequency		Conducted Power (dBm)		Liquid Temp [°C]	SAR(1g) (W/kg)	SAR(10g) (W/kg)	Limit (W/kg)
Position	Antenna	Channel	MHz	Before	After				
cheek	Righthand	Fixed	1	2412	17.48	17.45	20.0	0.112	1.6
			6	2437	17.29	17.25	20.0	0.130	
			11	2462	16.15	16.11	20.0	0.123	
	Left_head	Fixed	1	2412	17.48	17.45	20.0	0.184	
			6	2437	17.29	17.25	20.0	0.194	
			11	2462	16.15	16.11	20.0	0.185	

EUT Configuration 3

EUT Setup Condition		Frequency		Conducted Power (dBm)		Liquid Temp [°C]	SAR(1g) (W/kg)	SAR(10g) (W/kg)	Limit (W/kg)
Position	Antenna	Channel	MHz	Before	After				
tilt	Righthand	Fixed	1	2412	17.48	17.45	20.0	0.140	1.6
			6	2437	17.29	17.25	20.0	0.148	
			11	2462	16.15	16.11	20.0	0.143	
	Left_head	Fixed	1	2412	17.48	17.45	20.0	0.203	
			6	2437	17.29	17.25	20.0	0.216	
			11	2462	16.15	16.11	20.0	0.221	

 Remarks: For SAR testing, EUT is in WIFI link mode. In WIFI link mode, its crest factor is 1.
(Duty cycle: 1:1)

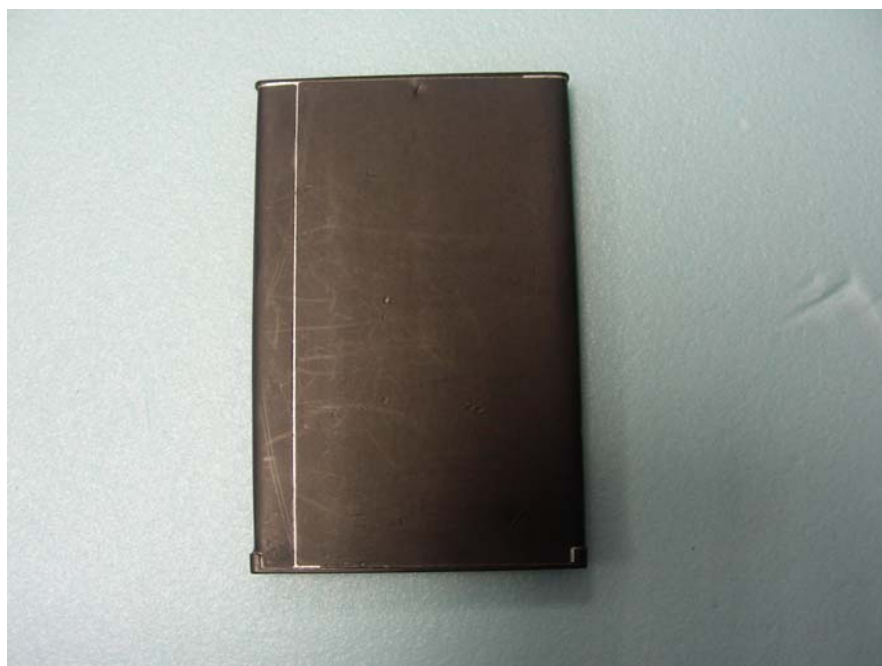


EUT PHOTO













12. EQUIPMENT LIST & CALIBRATION STATUS

Name of Equipment	Manufacturer	Type/Model	Serial Number	Calibration Due
P C	HP	PV 3.06GHz	375052-AA1	N/A
Signal Generator	Agilent	E8257C	MY43321570	12/11/2010
MultiMeter	Keithley	2000	1015843	05/01/2010
S-Parameter Network Analyzer	Agilent	E5071B	MY42301382	08/07/2010
Wireless Communication Test Set	R&S	CMU200	SN:B23-03291	06/17/2010
Power Meter	Agilent	E4416A	QB41292714	07/29/2010
E-field PROBE	ANTENNESSA	EP_100	SN1109	04/16/2010
DIPOLE 835	ANTENNESSA	DIPC32	SN 48/05	12/10/2010
DIPOLE 900	ANTENNESSA	DIPD33	SN 48/05	12/10/2010
DIPOLE 1800	ANTENNESSA	DIPF34	SN 48/05	12/10/2010
DIPOLE 1900	ANTENNESSA	DIP136	SN 48/05	12/10/2010
DIPOLE 2450	ANTENNESSA	DIPJ37	SN 48/05	12/10/2010
POSITIONING DEVICE	ANTENNESSA	MSH_14	SN 41_05	N/A
DUMMY PROBE	ANTENNESSA	DP_12	SN 39_05	N/A
SAM PHANTOM	ANTENNESSA	SAM29	SN 41_05	N/A
PHANTON WOOD TABLE	ANTENNESSA	N/A	N/A	N/A
6 AXIS ROBOT	KUKA	KR3	846428	N/A
ROBOT KRC	KUKA	KCP2	01436	N/A
CHANELS SCAN CARD	KEITHLEY	2000	2000-172-01B	N/A
PROBE/ROBOT POSITIONING DEVICE	ANTENNESSA	MSH14	SN 41_05	N/A
LIQUID CALIBRATION KIT	ANTENNESSA	41/05 OCP9	00425167	N/A

13. FACILITIES

All measurement facilities used to collect the measurement data are located at

☒ No.10, Weiye Rd., Innovation Park, Eco & Tec. Development Part, Kunshan City, Jiangsu Province, China.

14. REFERENCES

- [1] FCC 47 CFR Part 2 “Frequency Allocations and Radio Treaty Matters; General Rules and Regulations”
- [2] IEEE Std. C95.1-1999, “IEEE Standard for Safety Levels with Respect to Human Exposure to Radio Frequency Electromagnetic Fields, 3 kHz to 300 GHz”, 1999
- [3] IEEE Std. 1528-2003, “Recommended Practice for Determining the Peak Spatial-Average Specific Absorption Rate (SAR) in the Human Head from Wireless Communications Devices: Measurement Techniques”, December 2003
- [4] FCC OET Bulletin 65 (Edition 97-01) Supplement C (Edition 01-01), “Evaluating Compliance with FCC Guidelines for Human Exposure to Radiofrequency Electromagnetic Fields”, June 2001
- [5] SATIMO ANTENNESSA System Handbook
- [6] FCC KDB 248227 D01 v01r02, “SAR Measurement Procedures for 802.11 a/b/g Transmitters”, May 2007
- [7] FCC KDB 447498 D01 v04, “Mobile and Portable Device RF Exposure Procedures and Equipment Authorization Policies”, November 2009
- [8] FCC KDB 447498 D02 v02, “SAR Measurement Procedures for USB Dongle Transmitters”, November 2009
- [9] FCC KDB 616217 D01 v01r01, “SAR Evaluation Considerations for Laptop Computers with Antennas Built-in on Display Screens”, November 2009
- [10] FCC KDB 616217 D03 v01, “SAR Evaluation Considerations for Laptop/Notebook/Netbook and Tablet Computers”, November 2009
- [11] FCC KDB 648474 D01 v01r05, “SAR Evaluation Considerations for Handsets with Multiple Transmitters and Antennas”, September 2008
- [12] FCC KDB 941225 D01 v02, “SAR Measurement Procedures for 3G Devices – CDMA 2000 / Ev-Do / WCDMA / HSDPA / HSPA”, October 2007
- [13] FCC KDB 941225 D03 v01, “Recommended SAR Test Reduction Procedures for GSM / GPRS / EDGE”, December 2008
- [14] FCC KDB 941225 D04 v01, “Evaluating SAR for GSM/(E)GPRS Dual Transfer Mode”, January 27 2010
- [15] TS 34.121 Universal Mobile Telecommunications System (UMTS); Terminal Conformance Specification, Radio Transmission and Reception (FDD)



15. ATTACHMENTS

Exhibit	Content
1	System Validation Plots
2	SAR Test Plots
3	Dipole calibration report (850MHz/1900MHz)
4	E-field calibration report

END OF REPORT