

ELECTROMAGNETIC EMISSIONS COMPLIANCE REPORT

INTENTIONAL RADIATOR CERTIFICATION TO FCC PART 24 SUBPART E REQUIREMENT

OF

Product Name: GSM 900/1800/1900 mobile phone

Brand Name: P1

Model Name: PANPAC F-1

FCC ID: S2VP1M100

Report No.: ER/2005/30046

Issue Date: Mar. 29, 2005

FCC Rule Part: 2 & 24E

Prepared for YuHua TelTech (Shanghai) Co., Ltd.
YuHua R&D Building, 27 Xin Jin Qiao,
Pudong, Shanghai 201206

Prepared by SGS Taiwan Ltd.
No. 134, Wu Kung Rd., Wuku Industrial
Zone, Taipei County, Taiwan.

***Note:** This report shall not be reproduced except in full, without the written approval of SGS Taiwan Ltd. This document may be altered or revised by SGS Taiwan Ltd. personnel only, and shall be noted in the revision section of the document.*

The results shown in this test report refer only to the sample(s) tested unless otherwise stated. This test report cannot be reproduced, except in full, without prior written permission of the Company.

VERIFICATION OF COMPLIANCE

Applicant: YuHua TelTech (Shanghai) Co., Ltd.
YuHua R&D Building, 27 Xin Jin Qiao, Pudong, Shanghai 201206

Equipment Under Test: GSM 900/1800/1900 mobile phone

FCC ID Number: S2VP1M100

Brand Name: P1

Model No.: PANPAC F-1

Model Difference: N/A

File Number: EF/2005/30046

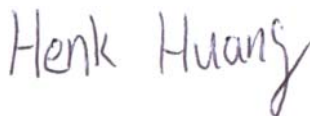
Date of test: Mar. 15, 2005 ~ Mar. 28, 2005

Date of EUT Received: Mar. 14, 2005

We hereby certify that:

The above equipment was tested by SGS Taiwan Ltd. The test data, data evaluation, test procedures, and equipment configurations shown in this report were made in accordance with the procedures given in TIA/EIA-603-1-1998 and the energy emitted by the sample EUT tested as described in this report is in compliance with conducted and radiated emission limits of FCC Rule FCC PART 24 subpart E.

The test results of this report relate only to the tested sample identified in this report.

Test By:**Date**

Mar. 29, 2005

*Henk Huang***Approved By****Date**

Mar. 29, 2005

Vincent Su

The results shown in this test report refer only to the sample(s) tested unless otherwise stated. This test report cannot be reproduced, except in full, without prior written permission of the Company.

Version

Version No.	Date
00	Mar. 29, 2005
00	Apr. 01, 2005

The results shown in this test report refer only to the sample(s) tested unless otherwise stated. This test report cannot be reproduced, except in full, without prior written permission of the Company.

Table of Contents

1. GENERAL INFORMATION	6
1.1 Product Description	6
1.2 Related Submittal(s) / Grant (s)	6
1.3 Test Methodology	6
1.4 Test Facility	7
1.5 Special Accessories	7
1.6 Equipment Modifications	7
2. SYSTEM TEST CONFIGURATION	8
2.1 EUT Configuration	8
2.2 EUT Exercise	8
2.3 Test Procedure	8
2.4 Configuration of Tested System	9
3. SUMMARY OF TEST RESULTS	10
4. DESCRIPTION OF TEST MODES	10
5. RF POWER OUTPUT MEASUREMENT	11
5.1 Standard Applicable	11
5.2 Test Set-up:	11
5.3 Measurement Procedure	11
5.4 Measurement Equipment Used:	11
5.5 Measurement Result	11
6. ERP, EIRP MEASUREMENT	12
6.1 Standard Applicable	12
6.2 Test SET-UP (Block Diagram of Configuration)	12
6.3 Measurement Procedure	14
6.4 Measurement Equipment Used:	15
6.5 Measurement Result	16
7. OCCUPIED BANDWIDTH MEASUREMENT	17
7.1 Standard Applicable	17
7.2 Test Set-up:	17
7.3 Measurement Procedure	17
7.4 Measurement Equipment Used:	17
7.5 Measurement Result:	18

The results shown in this test report refer only to the sample(s) tested unless otherwise stated. This test report cannot be reproduced, except in full, without prior written permission of the Company.

8. OUT OF BAND EMISSION AT ANTENNA TERMINALS	20
8.1 Standard Applicable	20
8.2 Test SET-UP.....	20
8.3 Measurement Procedure.....	20
8.4 Measurement Result.....	21
9. FIELD STRENGTH OF SPURIOUS RADIATION MEASUREMENT	25
9.1 Standard Applicable	25
9.2 EUT Setup (Block Diagram of Configuration).....	25
9.3 Measurement Procedure.....	27
9.4 Measurement Equipment Used:	28
9.5 Measurement Result.....	28
10. FREQUENCY STABILITY V.S. TEMPERATURE MEASUREMENT	32
10.1 Standard Applicable	32
10.2 Test Set-up:	32
10.3 Measurement Procedure.....	32
10.4 Measurement Equipment Used:	33
10.5 Measurement Result.....	33
11. FREQUENCY STABILITY V.S. VOLTAGE MEASUREMENT	34
11.1 Standard Applicable	34
11.2 Test Set-up:	34
11.3 Measurement Procedure.....	34
11.4 Measurement Equipment Used:	34
11.5 Measurement Result.....	35
12. AC POWER LINE CONDUCTED EMISSION TEST	36
12.1 Standard Applicable	36
12.2 EUT Setup.....	36
12.3 Measurement Procedure.....	36
12.4 Measurement Equipment Used:	37
12.5 Measurement Result.....	37
APPENDIX 1 PHOTOGRPHS OF SET UP	40
APPENDIX 2 PHOTOGRPHS OF EUT	43

The results shown in this test report refer only to the sample(s) tested unless otherwise stated. This test report cannot be reproduced, except in full, without prior written permission of the Company.

1. GENERAL INFORMATION

1.1 Product Description

Product	GSM 900/1800/1900 mobile phone	
Model Name	PANPAC F-1	
Model Difference:	N/A	
Trade Name	PANPAC F-1	
Frequency Range and Power	TX: 1850 MHz – 1910 MHz, RX: 1930 MHz – 1990 MHz	30 dBm
Cellular Phone Standards	GSM 900, 1800,1900 Mobile Phone	
Type of Emission	300KGXW	
Power Supply	5V DC by AC/DC Adapter	

1.2 Related Submittal(s) / Grant (s)

This submittal(s) (test report) is intended for FCC ID: **S2VP1M100** filing to comply with Section Part 24 subpart E of the FCC CFR 47 Rules.

1.3 Test Methodology

Both conducted and radiated testing were performed according to the procedures document on chapter 13 of ANSI C63.4 (2003) and FCC CFR 47.1046, 2.1047, 2.1049, 2.1051, 2.1053, 2.1055 and 2.1057.

The results shown in this test report refer only to the sample(s) tested unless otherwise stated. This test report cannot be reproduced, except in full, without prior written permission of the Company.

1.4 Test Facility

The open area test site and conducted measurement facility used to collect the radiated data is located on the address of SGS Taiwan Ltd. No. 134, Wu Kung Rd., Wuku Industrial Zone, Taipei Country, Taiwan. The Open Area Test Sites and the Line Conducted labs are constructed and calibrated to meet the FCC requirements in documents ANSI C63.4: 2003 and CISPR 22/EN 55022 requirements. Site No. 1(3 & 10 meters) Registration Number: 94644, Anechoic chamber (3 meters) Registration Number: 573967

1.5 Special Accessories

Not available for this EUT intended for grant.

1.6 Equipment Modifications

Not available for this EUT intended for grant.

The results shown in this test report refer only to the sample(s) tested unless otherwise stated. This test report cannot be reproduced, except in full, without prior written permission of the Company.

2. SYSTEM TEST CONFIGURATION

2.1 EUT Configuration

The EUT configuration for testing is installed on RF field strength measurement to meet the Commissions requirement and operating in a manner which intends to maximize its emission characteristics in a continuous normal application.

2.2 EUT Exercise

The EUT (Transmitter) was operated in the engineering mode to fix the Tx frequency which was for the purpose of the measurements.

2.3 Test Procedure

2.3.1 Conducted Emissions

The EUT is placed on a turn table which is 0.8 m above ground plane. According to the requirements in Section 7 & 13 of ANSI C63.4-2003. Conducted emissions from the EUT measured in the frequency range between 0.15 MHz and 30MHz using CISPR Quasi-Peak and Average detector mode.

2.3.2 Radiated Emissions

The EUT is placed on a turn table which is 1.0 m above ground plane. The turn table shall rotate 360 degrees to determine the position of maximum emission level. EUT is set 3m away from the receiving antenna which varied from 1m to 4m to find out the highest emission. And also, each emission was to be maximized by changing the polarization of receiving antenna both horizontal and vertical. In order to find out the max. emission, the relative positions of this hand-held transmitter(EUT) was rotated through three orthogonal axes according to the requirements in Section 8 & 13 of ANSI C63.4-2003.

The results shown in this test report refer only to the sample(s) tested unless otherwise stated. This test report cannot be reproduced, except in full, without prior written permission of the Company.

2.4 Configuration of Tested System

Fig. 2-1 Configuration of Tested System

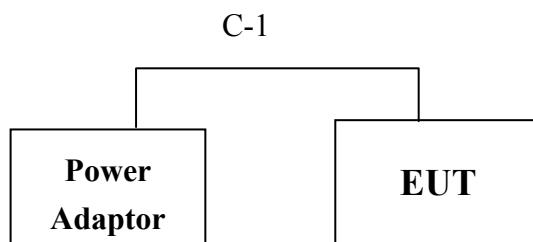


Table 2-1 Equipment Used in Tested System

Item	Equipment	Mfr/Brand	Model/ Type No.	FCC ID	Series No.	Data Cable	Power Cord
1.	N/A						

The results shown in this test report refer only to the sample(s) tested unless otherwise stated. This test report cannot be reproduced, except in full, without prior written permission of the Company.

3. SUMMARY OF TEST RESULTS

FCC Rules	Description Of Test	Result
§2.1046	RF Power Output	Compliant
§2.1046 §24.232(a)	EIRP measurement	Compliant
§2.1049	Occupied Bandwidth	Compliant
§2.1051 §24.238(a)	Out of Band Emissions at Antenna Terminals	Compliant
§2.1053 §24.238(a)	Field Strength of Spurious Radiation	Compliant
§2.1055, §24.235	Frequency Stability vs. Temperature	Compliant
§2.1055, §24.235	Frequency Stability vs. Voltage	Compliant
§15.107;§15.207	AC Power Line Conducted Emission	Compliant

4. DESCRIPTION OF TEST MODES

The EUT has been tested under operating condition.

EUT staying in continuous transmitting mode. Channel low, Mid and High for each type and band with rated data rate are chosen for full testing.

The field strength of spurious radiation emission was measured as EUT stand-up position (H mode) and lie down position (E1, E2 mode) for both GSM and GPRS six modes. The worst-case E1 mode for channel Low, Mid and High at GSM mode was reported.

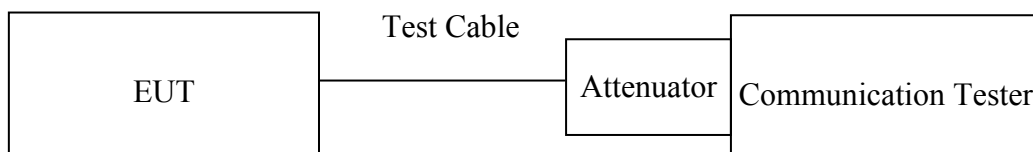
The results shown in this test report refer only to the sample(s) tested unless otherwise stated. This test report cannot be reproduced, except in full, without prior written permission of the Company.

5. RF POWER OUTPUT MEASUREMENT

5.1 Standard Applicable

According to FCC §2.1046.

5.2 Test Set-up:



Note: Measurement setup for testing on Antenna connector

5.3 Measurement Procedure

The transmitter output was connected to a calibrated attenuator, the other end of which was connected to a power meter. Transmitter output was read off the power meter in dBm. The power output at the transmitter antenna port was determined by adding the value of the attenuator to the power meter reading.

5.4 Measurement Equipment Used:

EQUIPMENT TYPE	MFR	MODEL NUMBER	SERIAL NUMBER	LAST CAL.	CAL DUE.
Power Meter	ANRITSU	ML2487A	6K00002070	07/27/2004	07/26/2005
Power Sensor	ANRITSU	MA2490A	31431	06/18/2004	06/17/2005
Low Loss Cable	HUBER+SUHNER	SUCOFLEX 104PEA	N/A	N/A	N/A
Attenuator	Mini-Circuit	BW-S20	N/A	10/07/2004	10/06/2005

5.5 Measurement Result

EUT Mode	Frequency (MHz)	CH	Power Meter Reading (dBm)	Offset (dB)	Average Power (dBm)
PCS 1900	1850.20	512	2.78	28.00	30.78
	1880.00	661	2.69	28.00	30.69
	1909.80	810	2.61	28.00	30.61

The results shown in this test report refer only to the sample(s) tested unless otherwise stated. This test report cannot be reproduced, except in full, without prior written permission of the Company.

6. ERP, EIRP MEASUREMENT

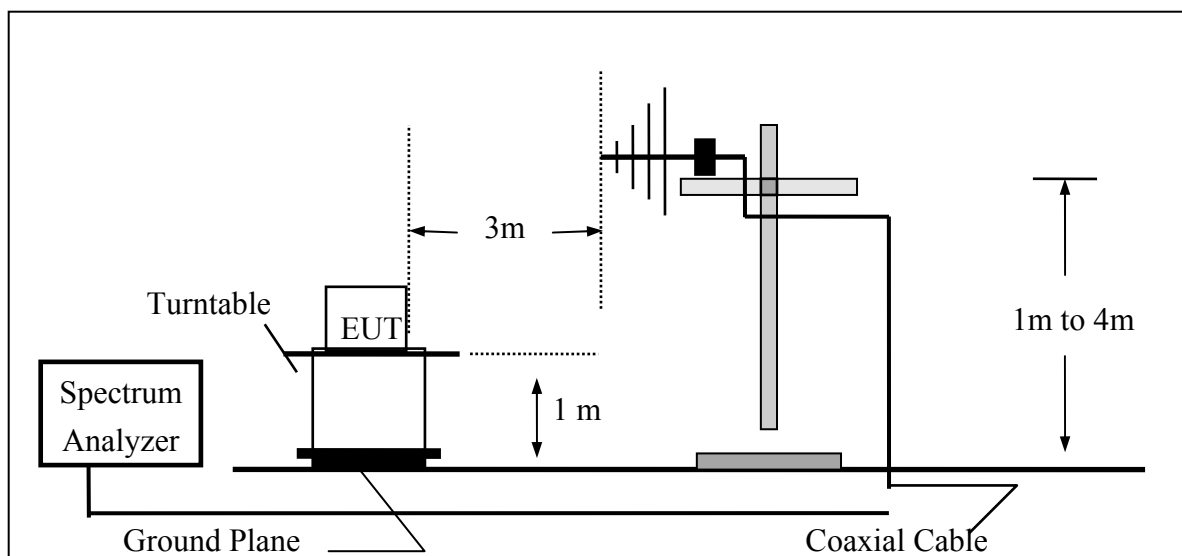
6.1 Standard Applicable

According to FCC §2.1046

FCC 24.232(b) Mobile station are limited to 2W EIRP.

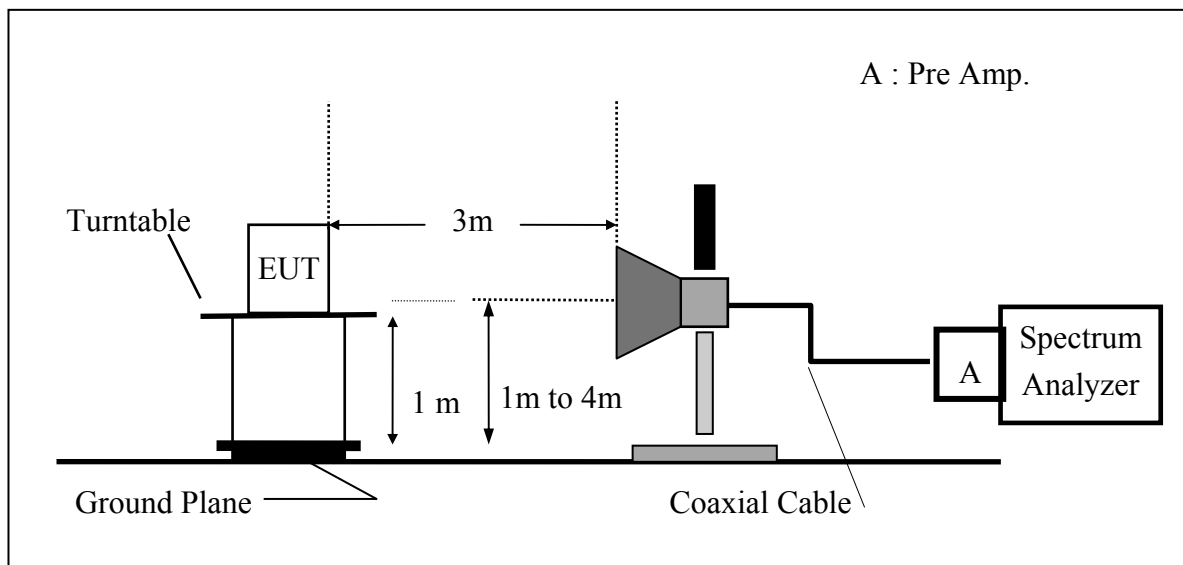
6.2 Test SET-UP (Block Diagram of Configuration)

(A) Radiated Emission Test Set-Up, Frequency Below 1000MHz

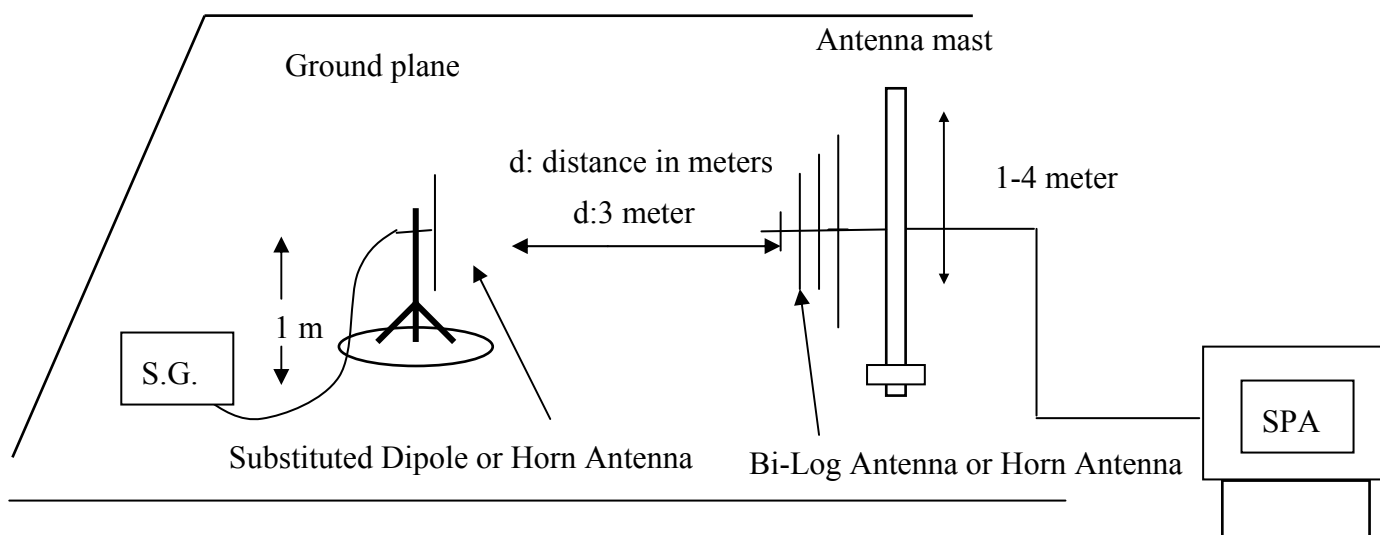


The results shown in this test report refer only to the sample(s) tested unless otherwise stated. This test report cannot be reproduced, except in full, without prior written permission of the Company.

(B) Radiated Emission Test Set-UP Frequency Over 1 GHz



(C) Substituted Method Test Set-UP



The results shown in this test report refer only to the sample(s) tested unless otherwise stated. This test report cannot be reproduced, except in full, without prior written permission of the Company.

6.3 Measurement Procedure

The EUT was placed on a non-conductive turntable using a non-conductive support. The radiated emission at the fundamental frequency was measured at 3 m with a test antenna and EMI spectrum analyzer.

During the measurement of the EUT, the resolution bandwidth was set to 1MHz and the average bandwidth was set to 1MHz. The highest emission was recorded with the rotation of the turntable and the lowering of the test antenna. The reading was recorded and the field strength (E in dBuV/m) was calculated.

EIRP in frequency band 1850.2 –1909.8MHz were measured using a substitution method. The EUT was replaced by a horn antenna connected, the S.G. output was recorded and EIRP was calculated as follows:

$$\text{EIRP} = \text{S.G. output (dBm)} + \text{Antenna Gain (dBi)} - \text{Cable Loss (dB)}$$

The results shown in this test report refer only to the sample(s) tested unless otherwise stated. This test report cannot be reproduced, except in full, without prior written permission of the Company.

6.4 Measurement Equipment Used:

EQUIPMENT TYPE	MFR	MODEL NUMBER	SERIAL NUMBER	LAST CAL.	CAL DUE.
Spectrum Analyzer	R&S	FSP 40	100034	05/27/2004	05/26/2005
Spectrum Analyzer	Agilent	E7405A	US41160416	08/27/2004	08/26/2005
Bilog Antenna	SCHWAZBECK	VULB9163	152	06/03/2004	06/02/2005
Horn antenna	Schwarzbeck	BBHA 9120D	309/320	08/16/2004	08/15/2005
Pre-Amplifier	HP	8447D	2944A09469	07/19/2004	07/18/2005
Pre-Amplifier	HP	8494B	3008A00578	02/26/2005	02/25/2006
Signal Generator	R&S	SMR40	100210	02/09/2005	02/10/2006
Turn Table	HD	DT420	N/A	N.C.R	N.C.R
Antenna Tower	HD	MA240-N	240/657	N.C.R	N.C.R
Controller	HD	HD100	N/A	N.C.R	N.C.R
Low Loss Cable	HUBER+SUHNER	SUCOFLEX 104PEA-10M	10m	10/09/2004	10/08/2005
Low Loss Cable	HUBER+SUHNER	SUCOFLEX 104PEA-3M	3m	10/09/2004	10/08/2005
Low Loss Cable	HUBER+SUHNER	SUCOFLEX 104PEA-0.5M	0.5m	10/09/2004	10/08/2005
Site NSA	SGS	966 chamber	N/A	11/17/2004	11/16/2005
Site NSA	SGS	10m Open-Site	N/A	10/02/2004	10/01/2005
Attenuator	Mini-Circuit	BW-S10W5	N/A	10/07/2004	10/06/2005
Temperature Chamber	TERCHY	MHG-120LF	911009	10/14/2004	10/13/2005
Dipole Antenna	Schwarzbeck	VHAP	908/909	06/10/2004	06/11/2005
Dipole Antenna	Schwarzbeck	UHAP	891/892	06/10/2004	06/11/2005
Horn antenna	Schwarzbeck	BBHA 9120D	N/A	08/16/2004	08/15/2005

The results shown in this test report refer only to the sample(s) tested unless otherwise stated. This test report cannot be reproduced, except in full, without prior written permission of the Company.

6.5 Measurement Result

EUT Mode	Frequency (MHz)	CH	EUT Pol.	Antenna Pol.	SPA Reading (dBuV)	S.G. Output (dBm)	Antenna Gain (dBi)	Cable Loss (dB)	EIRP (dBm)	Limit (dBm)
PCS 1900	1850.27	512	H	V	122.73	15.77	9.90	5.41	20.26	33.00
				H	127.14	20.25	9.90	5.41	24.74	33.00
			E1	V	123.66	16.70	9.90	5.41	21.19	33.00
				H	123.14	16.25	9.90	5.41	20.74	33.00
			E2	V	124.69	17.73	9.90	5.41	22.22	33.00
				H	127.68	20.79	9.90	5.84	24.85	33.00
	1880.00	661	H	V	123.71	16.76	9.99	5.46	21.29	33.00
				H	128.74	21.87	9.99	5.46	26.40	33.00
			E1	V	124.65	17.70	9.99	5.46	22.23	33.00
				H	126.14	19.27	9.99	5.46	23.80	33.00
			E2	V	126.31	19.36	9.99	5.46	23.89	33.00
				H	128.18	21.31	9.99	5.46	25.84	33.00
	1909.80	810	H	V	124.39	17.45	10.08	5.51	22.02	33.00
				H	129.75	22.90	10.08	5.51	27.46	33.00
			E1	V	127.26	20.32	10.08	5.51	24.89	33.00
				H	128.65	21.80	10.08	5.51	26.36	33.00
			E2	V	128.76	21.82	10.08	5.51	26.39	33.00
				H	128.10	21.25	10.08	5.51	25.81	33.00

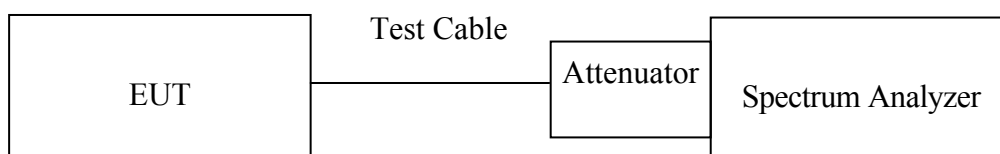
The results shown in this test report refer only to the sample(s) tested unless otherwise stated. This test report cannot be reproduced, except in full, without prior written permission of the Company.

7. OCCUPIED BANDWIDTH MEASUREMENT

7.1 Standard Applicable

According to §FCC 2.1049.

7.2 Test Set-up:



Note: Measurement setup for testing on Antenna connector

7.3 Measurement Procedure

The EUT's output RF connector was connected with a short cable to the spectrum analyzer, RBW (10KHz) was set to about 1% of emission BW, VBW= 30KHz, -26dBc display line was placed on the screen (or 99% bandwidth), the occupied bandwidth is the delta frequency between the two points where the display line intersects the signal trace.

7.4 Measurement Equipment Used:

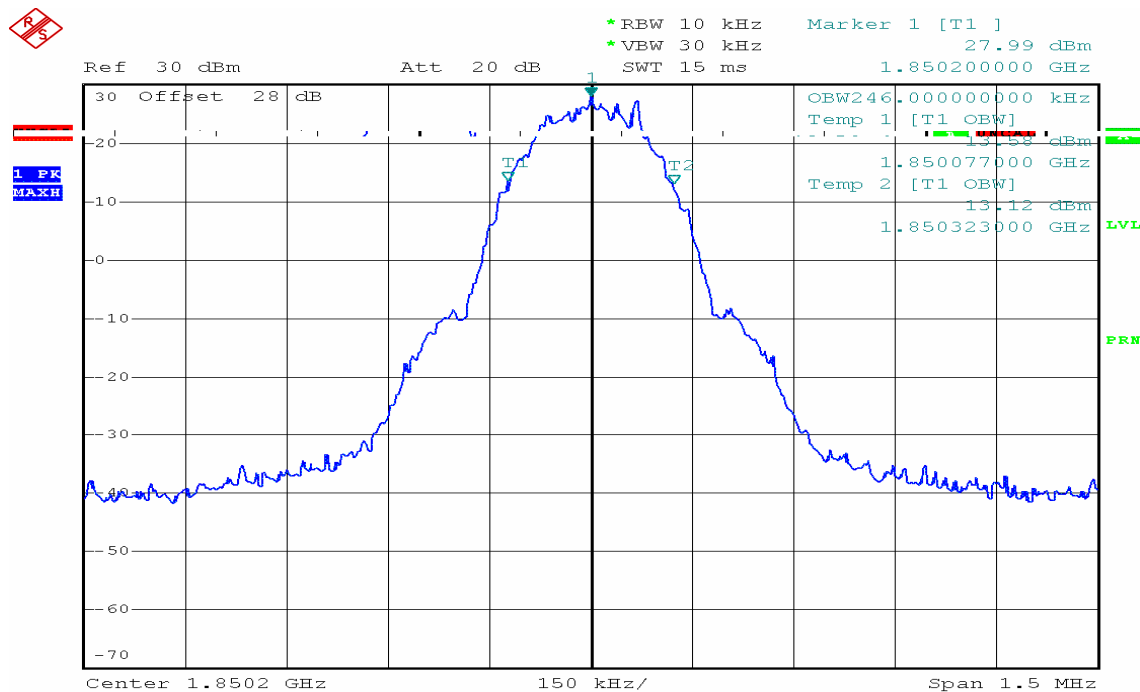
EQUIPMENT TYPE	MFR	MODEL NUMBER	SERIAL NUMBER	LAST CAL.	CAL DUE.
Spectrum Analyzer	R&S	FSP 40	100034	05/27/2004	05/26/2005
Spectrum Analyzer	Agilent	E7405A	US41160416	08/27/2004	08/26/2005
Low Loss Cable	HUBER+SUHNER	SUCOFLEX 104PEA	N/A	N/A	N/A
Attenuator	Mini-Circuit	BW-S6W5	N/A	10/07/2004	10/06/2005

The results shown in this test report refer only to the sample(s) tested unless otherwise stated. This test report cannot be reproduced, except in full, without prior written permission of the Company.

7.5 Measurement Result:

EUT Mode	Frequency (MHz)	CH	Bandwidth (MHz)
PCS 1900	1850.20	512	0.2484
	1880.00	661	0.2476
	1909.80	810	0.2473

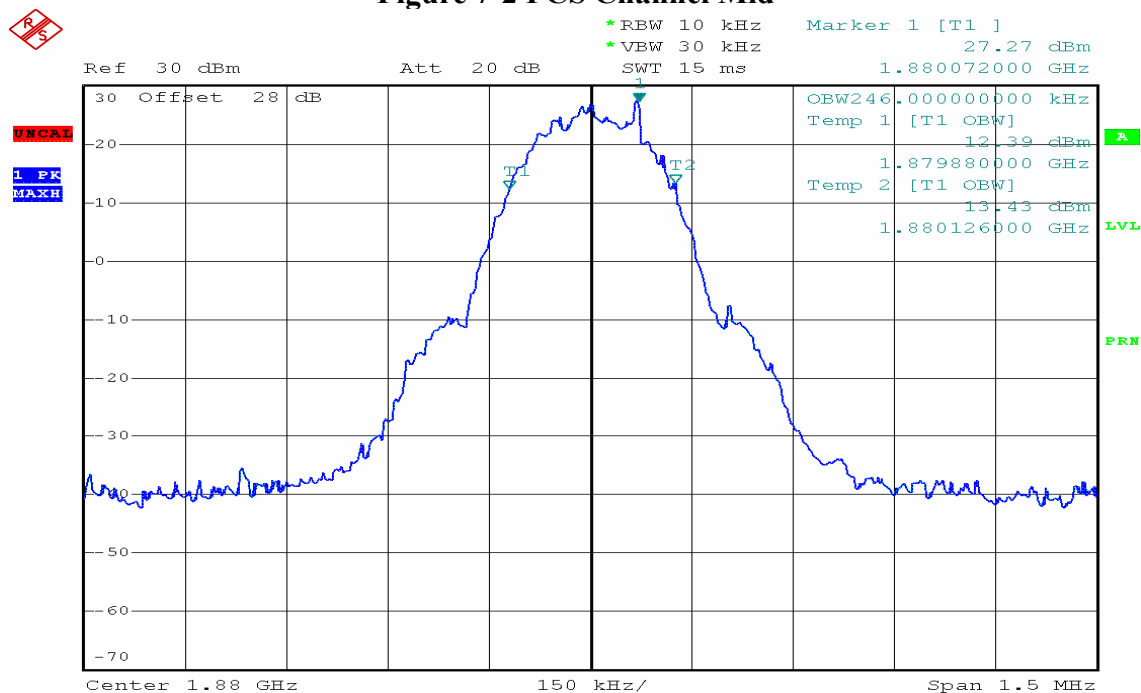
Figure 7-1: PCS Channel Low



Date: 28.MAR.2005 18:09:30

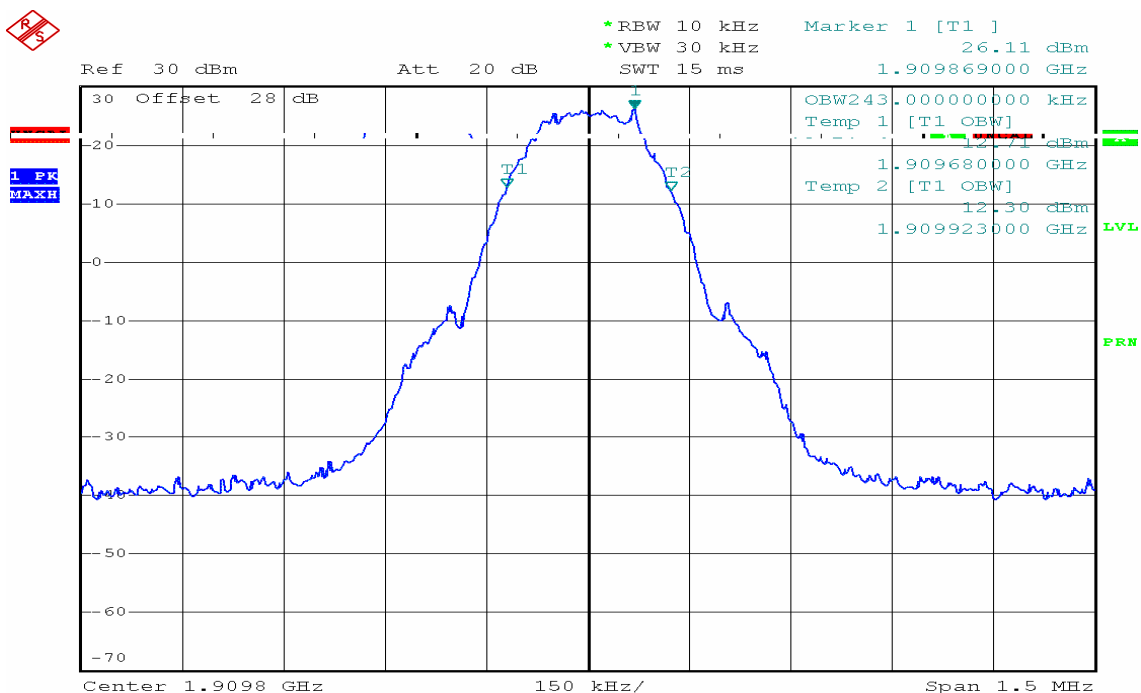
The results shown in this test report refer only to the sample(s) tested unless otherwise stated. This test report cannot be reproduced, except in full, without prior written permission of the Company.

Figure 7-2 PCS Channel Mid



Date: 28.MAR.2005 18:07:38

Figure 7-3: PCS Channel High



Date: 28.MAR.2005 18:05:29

The results shown in this test report refer only to the sample(s) tested unless otherwise stated. This test report cannot be reproduced, except in full, without prior written permission of the Company.

8. OUT OF BAND EMISSION AT ANTENNA TERMINALS

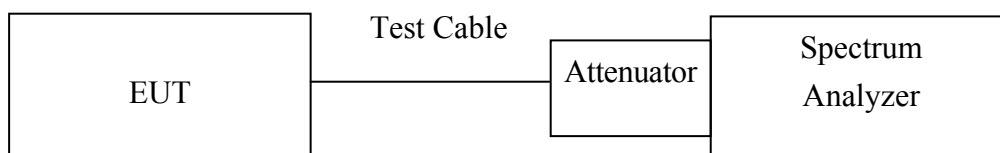
8.1 Standard Applicable

According to FCC §2.1051.

FCC §24.238(a), the magnitude of each spurious and harmonic emission that can be detected when the equipment is operated under the conditions specified in the instruction manual and/or alignment procedure, shall not be less than $43 + 10 \log$ (mean output power in watts) dBc below the mean power output outside a license's frequency block (-13dBm)

8.2 Test SET-UP

Out of band emission at antenna terminals:



8.3 Measurement Procedure

The RF output of the transceiver was connected to a spectrum analyzer through appropriate attenuation. The resolution bandwidth of the spectrum analyzer was set at 1MHz, sufficient scans were taken to show the out of band Emissions if any up to 10th harmonic.

For the out of band: Set the RBW, VBW = 1MHz, Start=30MHz, Stop= 10th harmonic.
Limit = -13dBm

Band Edge Requirements(1850MHz and 1910MHz) : In the 1 MHz bands immediately outside and adjacent to the frequency block, a resolution bandwidth of at least 1 percent of the emission bandwidth of the fundamental emission of the transmitter may be employed to measure the out of band Emissions. Limit, -13dBm.

Measurement Equipment Used:

EQUIPMENT TYPE	MFR	MODEL NUMBER	SERIAL NUMBER	LAST CAL.	CAL DUE.
Spectrum Analyzer	R&S	FSP 40	100034	05/27/2004	05/26/2005
Spectrum Analyzer	Agilent	E7405A	US41160416	08/27/2004	08/26/2005
Low Loss Cable	HUBER+SUHNER	SUCOFLEX 104PEA	N/A	N/A	N/A
Attenuator	Mini-Circult	BW-S6W5	N/A	10/07/2004	10/06/2005

The results shown in this test report refer only to the sample(s) tested unless otherwise stated. This test report cannot be reproduced, except in full, without prior written permission of the Company.

8.4 Measurement Result

Figure 8-1: Out of Band emission at antenna terminals– PCS Channel Low

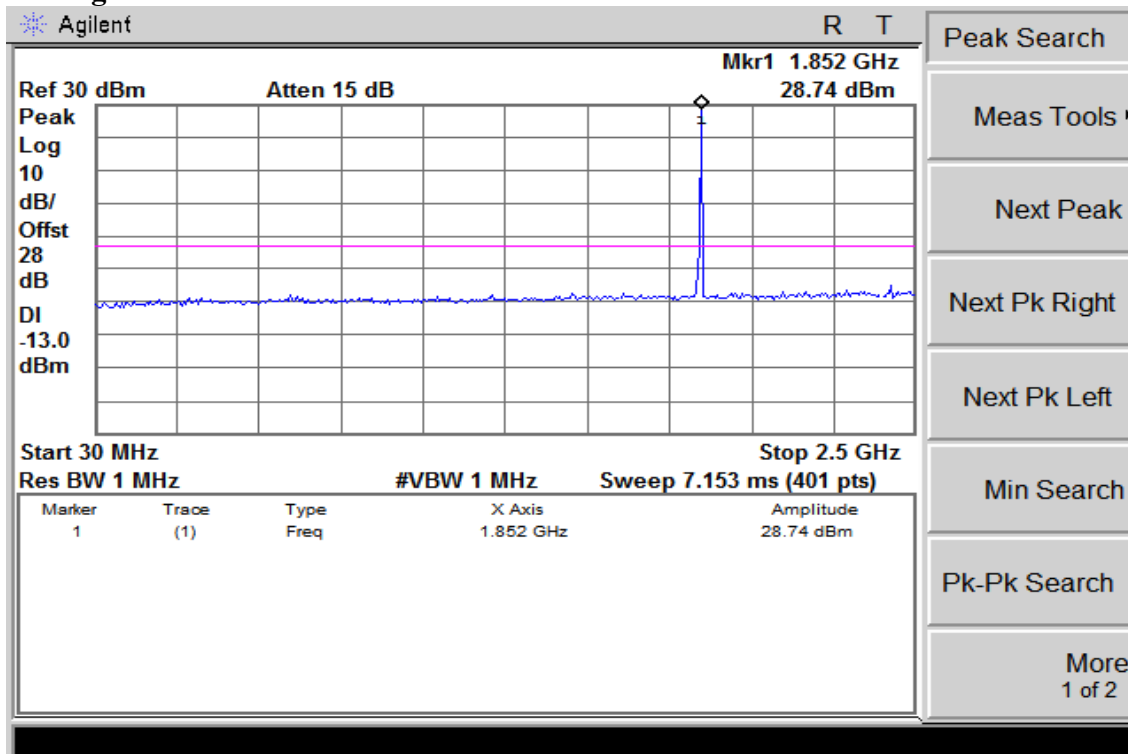
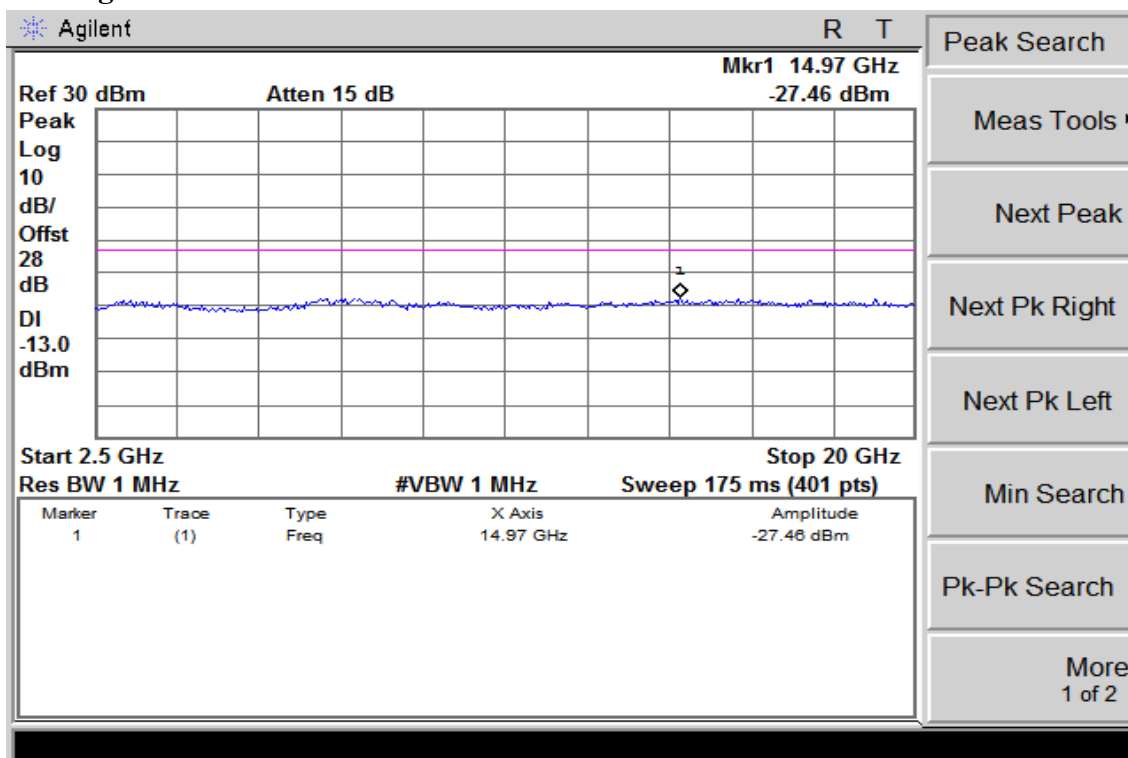


Figure 8-2: Out of Band emission at antenna terminals–PCS Channel Low



The results shown in this test report refer only to the sample(s) tested unless otherwise stated. This test report cannot be reproduced, except in full, without prior written permission of the Company.

Figure 8-3: Out of Band emission at antenna terminals –PCS Channel Mid

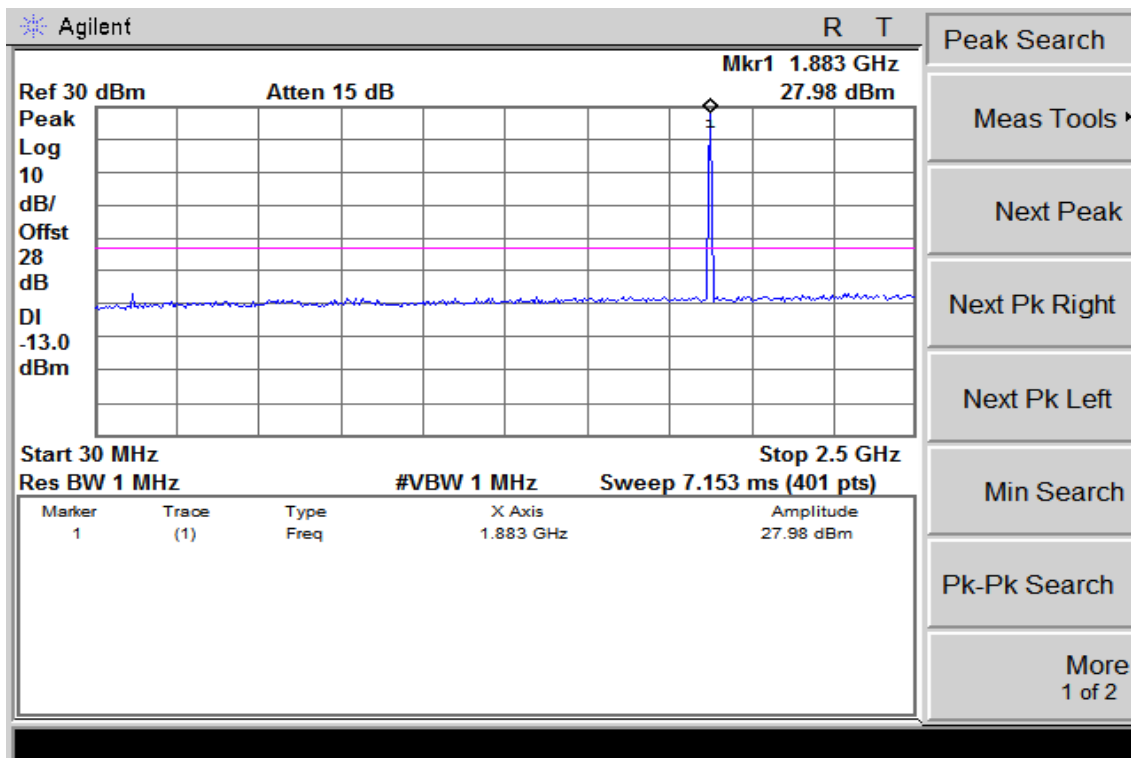
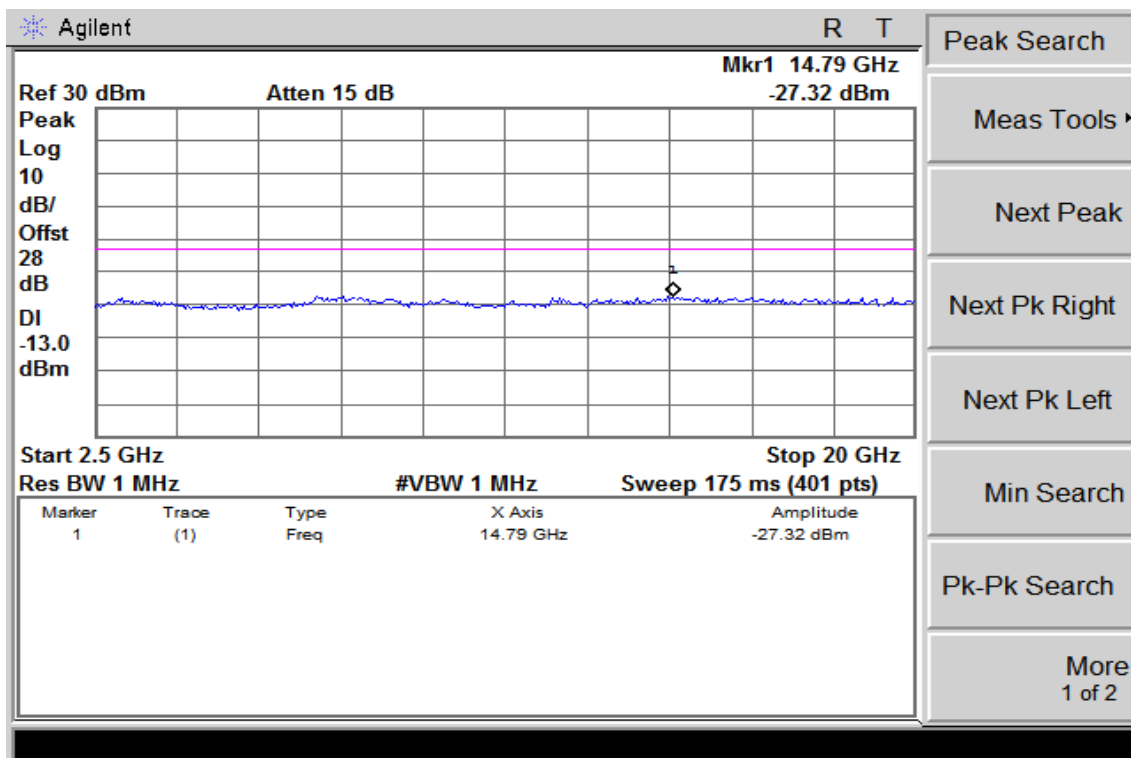


Figure 8-4: Out of Band emission at antenna terminals –PCS Channel Mid



The results shown in this test report refer only to the sample(s) tested unless otherwise stated. This test report cannot be reproduced, except in full, without prior written permission of the Company.

Figure 8-5: Out of Band emission at antenna terminals–PCS Channel High

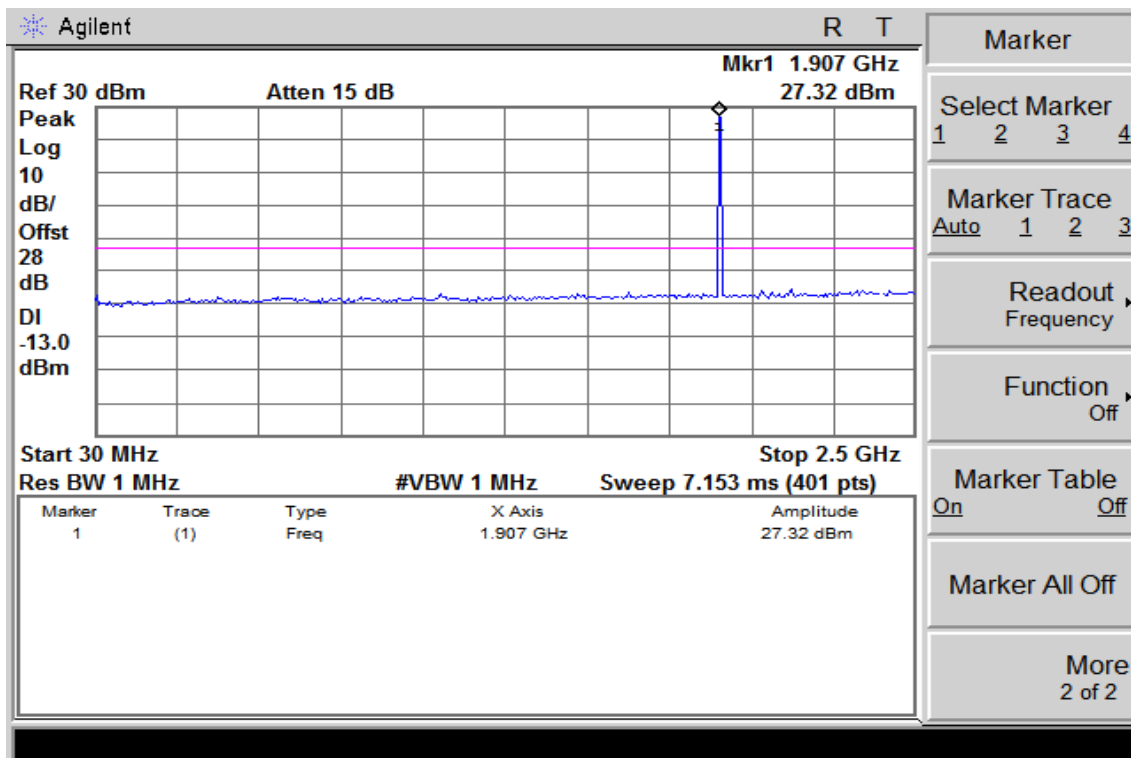
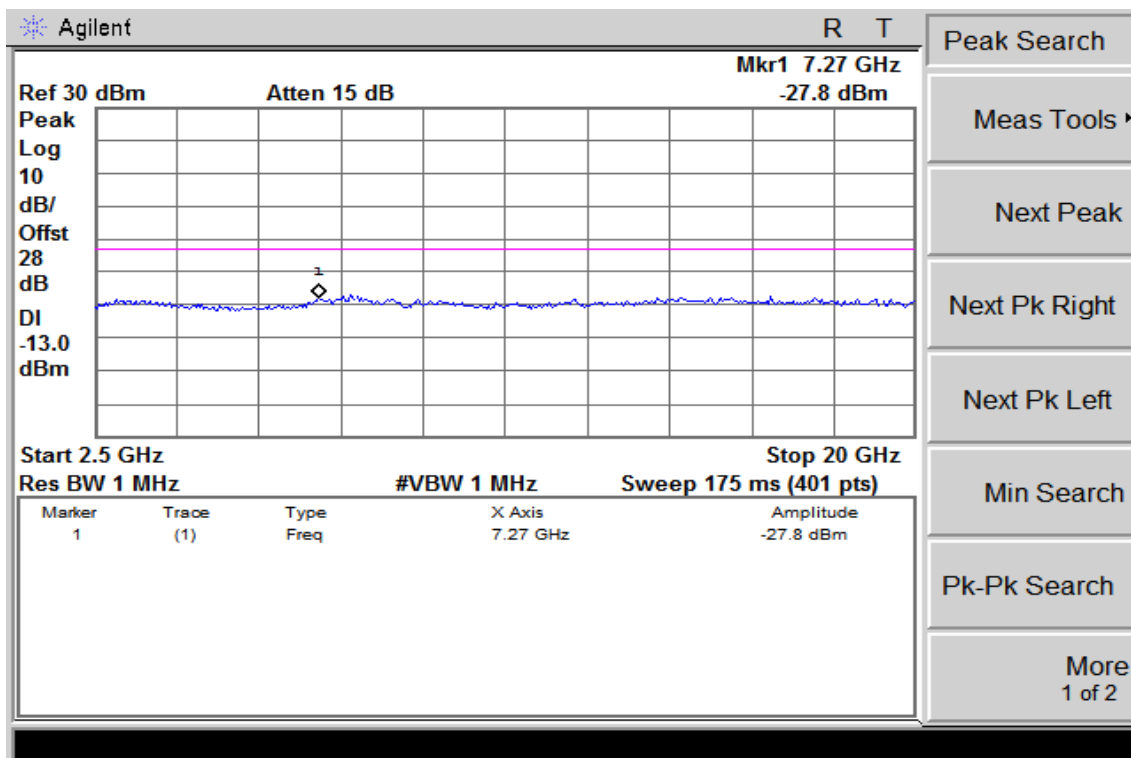


Figure 8-6: Out of Band emission at antenna terminals– PCS Channel High



The results shown in this test report refer only to the sample(s) tested unless otherwise stated. This test report cannot be reproduced, except in full, without prior written permission of the Company.

Figure 8-7: Bad edge emission at antenna terminals – PCS CH 512

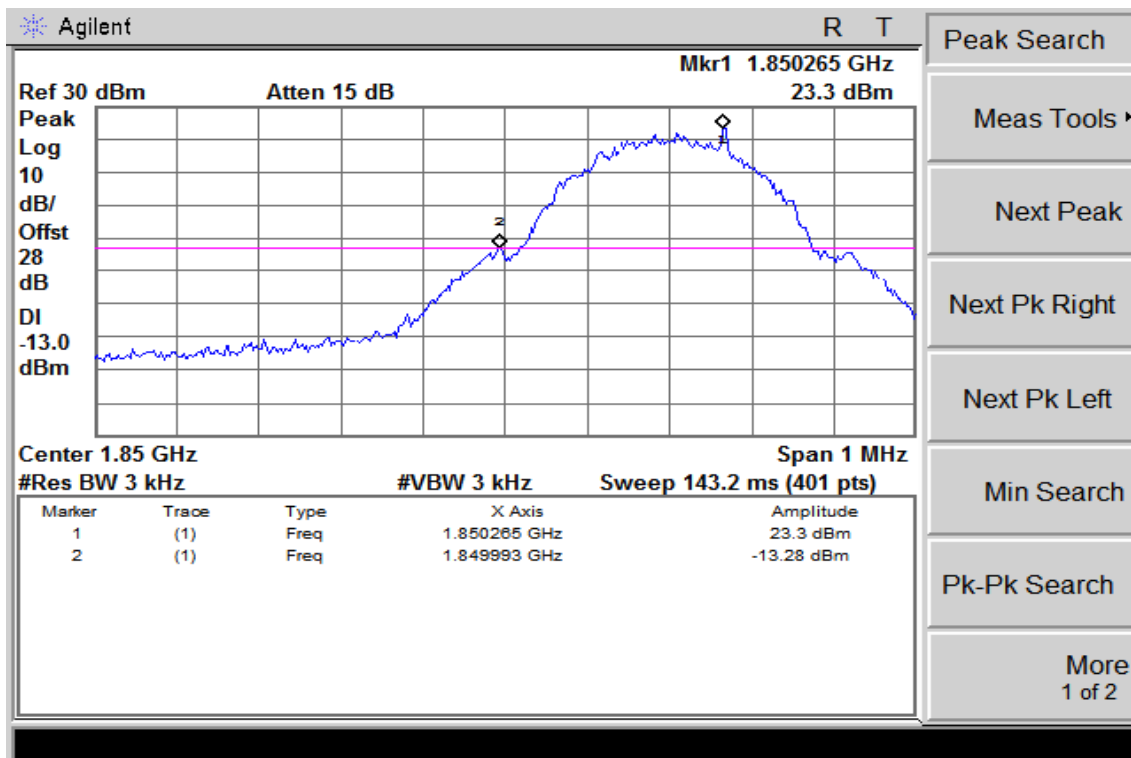
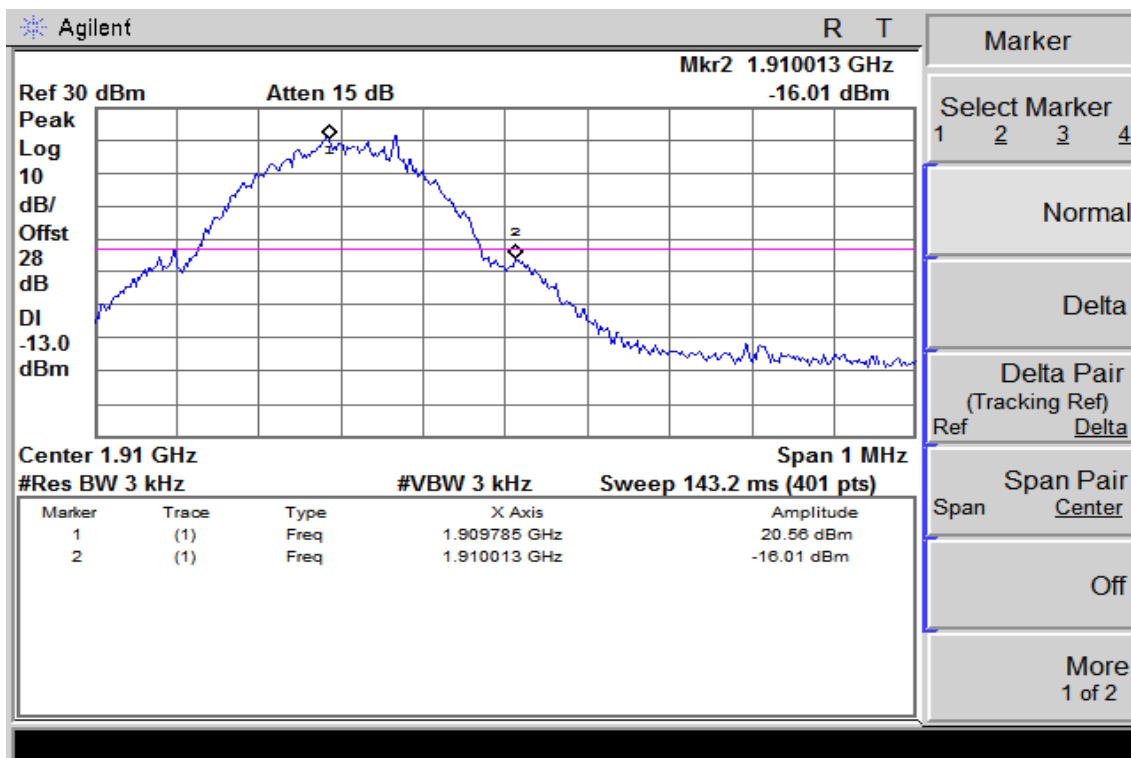


Figure 8-8: Band edge emission at antenna terminals – PCS CH 810



The results shown in this test report refer only to the sample(s) tested unless otherwise stated. This test report cannot be reproduced, except in full, without prior written permission of the Company.

9. FIELD STRENGTH OF SPURIOUS RADIATION MEASUREMENT

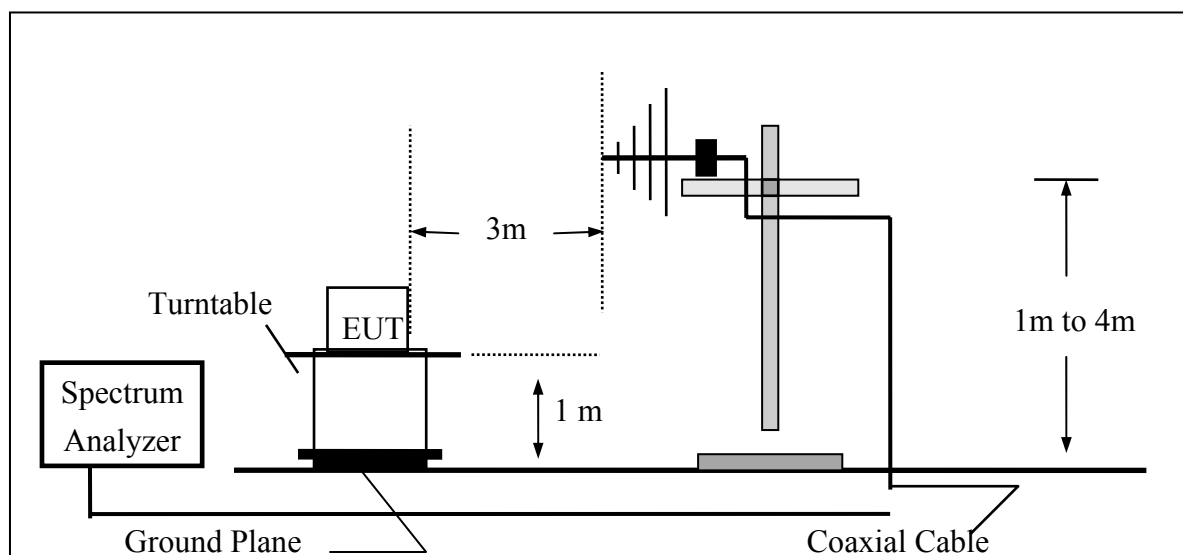
9.1 Standard Applicable

According to FCC §2.1053,

FCC §24.238(a), the magnitude of each spurious and harmonic emission that can be detected when the equipment is operated under the conditions specified in the instruction manual and/or alignment procedure, shall not be less than $43 + 10 \log$ (mean output power in watts) dBc below the mean power output outside a license's frequency block (-13dBm)

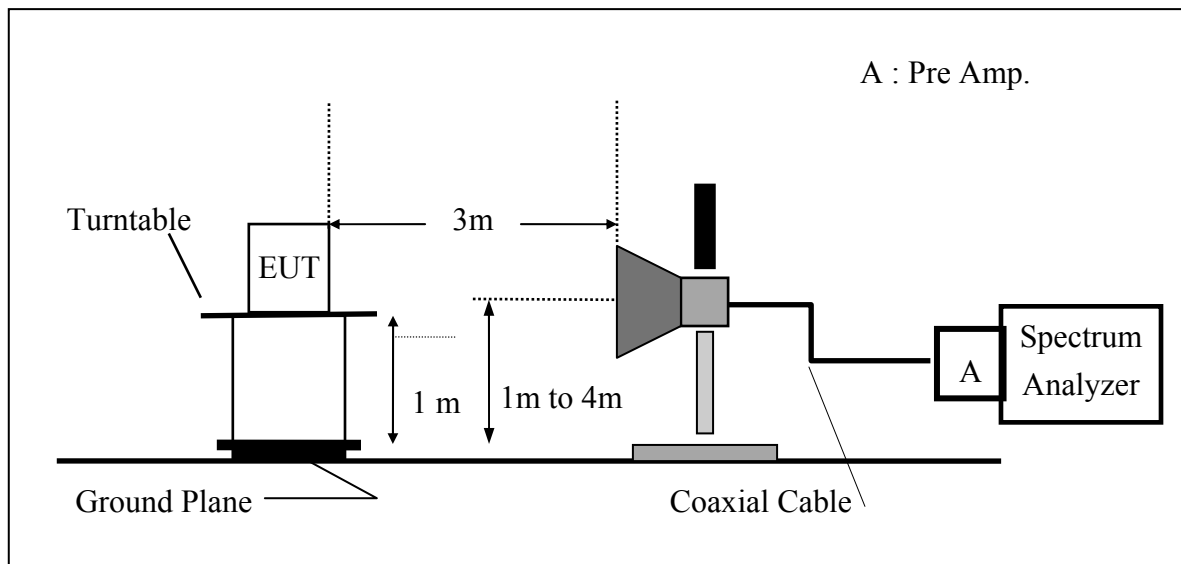
9.2 EUT Setup (Block Diagram of Configuration)

(A) Radiated Emission Test Set-Up, Frequency Below 1000MHz

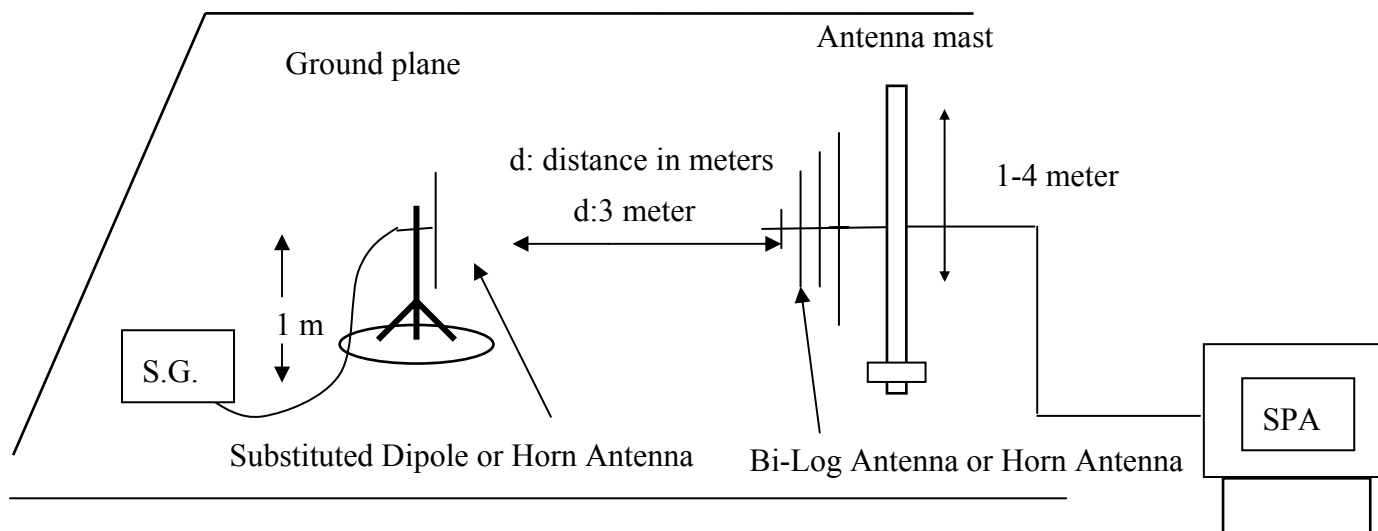


The results shown in this test report refer only to the sample(s) tested unless otherwise stated. This test report cannot be reproduced, except in full, without prior written permission of the Company.

(B) Radiated Emission Test Set-UP Frequency Over 1 GHz



(C) Substituted Method Test Set-UP



The results shown in this test report refer only to the sample(s) tested unless otherwise stated. This test report cannot be reproduced, except in full, without prior written permission of the Company.

9.3 Measurement Procedure

The EUT was placed on a non-conductive, The measurement antenna was placed at a distance of 3 meters from the EUT. During the tests, the antenna height and the EUT azimuth were varied in order to identify the maximum level of emissions from the EUT. This maximization process was repeated with the EUT positioned in each of its three orthogonal orientations.

The frequency range up to tenth harmonic was investigated for each of three fundamental frequency (low, middle and high channels). Once spurious emission were identified, the power of the emission was determined using the substitution method.

The spurious emissions attenuation was calculated as the difference between radiated power at the fundamental frequency and the spurious emissions frequency.

$$\text{EIRP} = \text{S.G. output (dBm)} + \text{Antenna Gain(dBi)} - \text{Cable Loss (dB)}$$

The results shown in this test report refer only to the sample(s) tested unless otherwise stated. This test report cannot be reproduced, except in full, without prior written permission of the Company.

9.4 Measurement Equipment Used:

EQUIPMENT TYPE	MFR	MODEL NUMBER	SERIAL NUMBER	LAST CAL.	CAL DUE.
Spectrum Analyzer	R&S	FSP 40	100034	05/27/2004	05/26/2005
Spectrum Analyzer	Agilent	E7405A	US41160416	08/27/2004	08/26/2005
Bilog Antenna	SCHWAZBECK	VULB9163	152	06/03/2004	06/02/2005
Horn antenna	Schwarzbeck	BBHA 9120D	309/320	08/16/2004	08/15/2005
Pre-Amplifier	HP	8447D	2944A09469	07/19/2004	07/18/2005
Pre-Amplifier	HP	8494B	3008A00578	02/26/2005	02/25/2006
Signal Generator	R&S	SMR40	100210	02/09/2005	02/10/2006
Turn Table	HD	DT420	N/A	N.C.R	N.C.R
Antenna Tower	HD	MA240-N	240/657	N.C.R	N.C.R
Controller	HD	HD100	N/A	N.C.R	N.C.R
Low Loss Cable	HUBER+SUHNER	SUCOFLEX 104PEA-10M	10m	10/09/2004	10/08/2005
Low Loss Cable	HUBER+SUHNER	SUCOFLEX 104PEA-3M	3m	10/09/2004	10/08/2005
Low Loss Cable	HUBER+SUHNER	SUCOFLEX 104PEA-0.5M	0.5m	10/09/2004	10/08/2005
Site NSA	SGS	966 chamber	N/A	11/17/2004	11/16/2005
Site NSA	SGS	10m Open-Site	N/A	10/02/2004	10/01/2005
Attenuator	Mini-Circuit	BW-S10W5	N/A	10/07/2004	10/06/2005
Temperature Chamber	TERCHY	MHG-120LF	911009	10/14/2004	10/13/2005
Dipole Antenna	Schwarzbeck	VHAP	908/909	06/10/2004	06/11/2005
Dipole Antenna	Schwarzbeck	UHAP	891/892	06/10/2004	06/11/2005
Horn antenna	Schwarzbeck	BBHA 9120D	N/A	08/16/2004	08/15/2005

9.5 Measurement Result

Refer to attach tabular data sheets.

The results shown in this test report refer only to the sample(s) tested unless otherwise stated. This test report cannot be reproduced, except in full, without prior written permission of the Company.

Radiated Spurious Emission Measurement Result

Operation Mode : TX CH Low H Mode
Fundamental Frequency : 1850.20MHz
Temperature : 25°C
Humidity : 65%

Test Date Mar. 24, 2005
Test By: Henk
Pol: Ver. / Hor.

Freq.	SPA. Reading	Ant.Pol.	S.G Output	Antenna Gain	Cable Loss	ERP/ EIRP	Limit	Safe Margin
(MHz)	(dBuV)	H/V	(dBm)	(dB/dBi)	(dB)	(dBm)	(dBm)	(dBm)
1423.00	47.01	V	-60.07	8.40	4.65	-56.32	-13.00	-43.32
3700.40	57.24	V	-44.34	12.61	7.73	-39.46	-13.00	-26.46
5550.60	57.19	V	-38.02	13.23	9.68	-34.48	-13.00	-21.48
7400.80	---	V	---	---	---	---	-13.00	---
9251.00	48.88	V	-33.95	11.92	13.10	-35.13	-13.00	-22.13
11101.20	---	V	---	---	---	---	-13.00	---
12951.40	---	V	---	---	---	---	-13.00	---
14801.60	---	V	---	---	---	---	-13.00	---
16651.80	---	V	---	---	---	---	-13.00	---
18502.00	---	V	---	---	---	---	-13.00	---
1423.00	48.00	H	-59.35	8.40	4.65	-55.60	-13.00	-42.60
3700.40	54.93	H	-46.43	12.61	7.73	-41.55	-13.00	-28.55
5550.60	53.54	H	-41.59	13.23	9.68	-38.04	-13.00	-25.04
7400.80	---	H	---	---	---	---	-13.00	---
9251.00	46.97	H	-35.67	11.92	13.10	-36.85	-13.00	-23.85
11101.20	---	H	---	---	---	---	-13.00	---
12951.40	---	H	---	---	---	---	-13.00	---
14801.60	---	H	---	---	---	---	-13.00	---
16651.80	---	H	---	---	---	---	-13.00	---
18502.00	---	H	---	---	---	---	-13.00	---

Remark :

- 1 The emission behaviour belongs to narrowband spurious emission.
- 2 Remark"---" means that the emission level is too low to be measured
- 3 The result basic equation calculation is as follows:
- 4 $ERP/EIRP (dBm) = SG \text{ Setting}(dBm) + Antenna \text{ Gain} (dBd/dBi) - Cable \text{ loss} (dB)$

The results shown in this test report refer only to the sample(s) tested unless otherwise stated. This test report cannot be reproduced, except in full, without prior written permission of the Company.

Radiated Spurious Emission Measurement Result

Operation Mode : TX CH Mid H Mode
Fundamental Frequency : 1880MHz
Temperature : 25°C
Humidity : 65%

Test Date Mar. 24, 2005
Test By: Henk
Pol: Ver. / Hor.

Freq.	SPA. Reading	Ant.Pol.	S.G Output	Antenna Gain	Cable Loss	ERP/ EIRP	Limit	Safe Margin
(MHz)	(dBuV)	H/V	(dBm)	(dB/dBi)	(dB)	(dBm)	(dBm)	(dBm)
1441.00	46.30	V	-60.79	8.50	4.68	-56.97	-13.00	-43.97
3760.00	57.51	V	-43.79	12.60	7.82	-39.01	-13.00	-26.01
5640.00	60.52	V	-34.44	13.36	9.73	-30.81	-13.00	-17.81
7520.00	---	V	---	---	---	---	-13.00	---
9400.00	48.67	V	-33.85	11.93	13.15	-35.07	-13.00	-22.07
11280.00	---	V	---	---	---	---	-13.00	---
13160.00	---	V	---	---	---	---	-13.00	---
15040.00	---	V	---	---	---	---	-13.00	---
16920.00	---	V	---	---	---	---	-13.00	---
18800.00	---	V	---	---	---	---	-13.00	---
1441.00	48.98	H	-58.11	8.50	4.68	-54.29	-13.00	-41.29
3760.00	57.47	H	-43.64	12.60	7.82	-38.85	-13.00	-25.85
5640.00	55.42	H	-39.47	13.36	9.73	-35.84	-13.00	-22.84
7520.00	---	H	---	---	---	---	-13.00	---
9400.00	48.38	H	-33.88	11.93	13.15	-35.11	-13.00	-22.11
11280.00	---	H	---	---	---	---	-13.00	---
13160.00	---	H	---	---	---	---	-13.00	---
15040.00	---	H	---	---	---	---	-13.00	---
16920.00	---	H	---	---	---	---	-13.00	---
18800.00	---	H	---	---	---	---	-13.00	---

Remark :

- 1 The emission behaviour belongs to narrowband spurious emission.
- 2 Remark"---" means that the emission level is too low to be measured
- 3 The result basic equation calculation is as follows:
- 4 $ERP/EIRP (dBm) = SG \text{ Setting}(dBm) + Antenna \text{ Gain} (dBd/dBi) - Cable \text{ loss} (dB)$

The results shown in this test report refer only to the sample(s) tested unless otherwise stated. This test report cannot be reproduced, except in full, without prior written permission of the Company.

Radiated Spurious Emission Measurement Result

Operation Mode : TX CH High H Mode
Fundamental Frequency : 1909.8 MHz
Temperature : 25°C
Humidity : 65%

Test Date : Mar. 24, 2005
Test By: Henk
Pol: Ver. / Hor.

Freq.	SPA. Reading	Ant.Pol.	S.G Output	Antenna Gain	Cable Loss	ERP/ EIRP	Limit	Safe Margin
(MHz)	(dBuV)	H/V	(dBm)	(dB/dBi)	(dB)	(dBm)	(dBm)	(dBm)
3819.60	53.57	V	-47.46	12.60	7.92	-42.77	-13.00	-29.77
5729.40	57.93	V	-36.77	13.49	9.78	-33.06	-13.00	-20.06
7639.20	46.40	V	-38.77	11.40	11.48	-38.84	-13.00	-25.84
9549.00	45.44	V	-36.73	11.95	13.22	-37.99	-13.00	-24.99
11458.80	---	V	---	---	---	---	-13.00	---
13368.60	---	V	---	---	---	---	-13.00	---
15278.40	---	V	---	---	---	---	-13.00	---
17188.20	---	V	---	---	---	---	-13.00	---
19098.00	---	V	---	---	---	---	-13.00	---
1306.00	47.14	H	-60.58	7.72	4.42	-57.28	-13.00	-44.28
1468.00	50.52	H	-56.68	8.66	4.73	-52.76	-13.00	-39.76
3819.60	56.69	H	-44.17	12.60	7.92	-39.48	-13.00	-26.48
5729.40	53.13	H	-41.52	13.49	9.78	-37.81	-13.00	-24.81
7639.20	---	H	---	---	---	---	-13.00	---
9549.00	---	H	---	---	---	---	-13.00	---
11458.80	---	H	---	---	---	---	-13.00	---
13368.60	---	H	---	---	---	---	-13.00	---
15278.40	---	H	---	---	---	---	-13.00	---
17188.20	---	H	---	---	---	---	-13.00	---
19098.00	---	H	---	---	---	---	-13.00	---

Remark :

- 1 The emission behaviour belongs to narrowband spurious emission.
- 2 Remark"---" means that the emission level is too low to be measured
- 3 The result basic equation calculation is as follows:
- 4 $ERP/EIRP (dBm) = SG \text{ Setting}(dBm) + Antenna \text{ Gain} (dBd/dBi) - Cable \text{ loss} (dB)$

The results shown in this test report refer only to the sample(s) tested unless otherwise stated. This test report cannot be reproduced, except in full, without prior written permission of the Company.

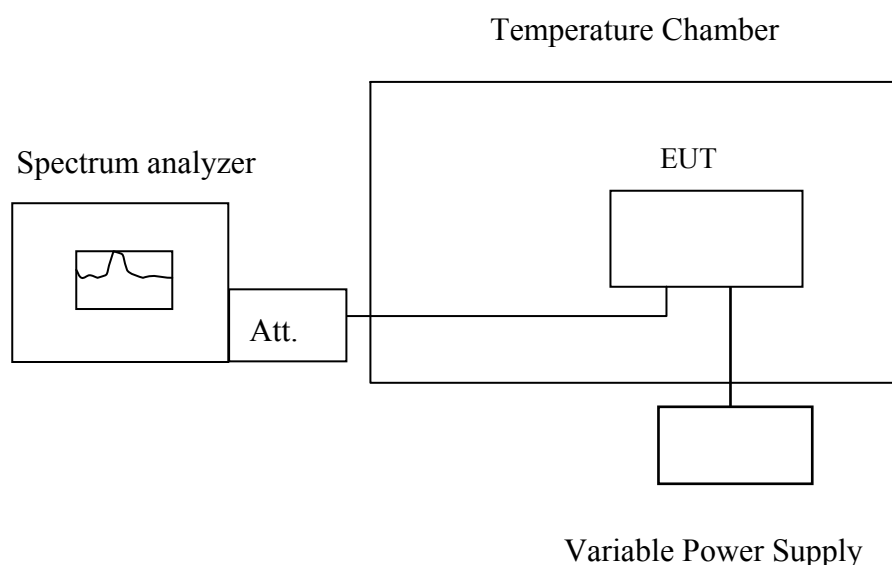
10. FREQUENCY STABILITY V.S. TEMPERATURE MEASUREMENT

10.1 Standard Applicable

According to FCC §2.1055, FCC §24.235.

Frequency Tolerance: 2.5 ppm

10.2 Test Set-up:



Note : Measurement setup for testing on Antenna connector

10.3 Measurement Procedure

The equipment under test was connected to an external AC or DC power supply and input rated voltage. RF output was connected to a frequency counter or spectrum analyzer via feed through attenuators. The EUT was placed inside the temperature chamber. Set the spectrum analyzer RBW low enough to obtain the desired frequency resolution and measure EUT 25°C operating frequency as reference frequency. Turn EUT off and set the chamber temperature to -30°C. After the temperature stabilized for approximately 30 minutes recorded the frequency. Repeat step measure with 10°C increased per stage until the highest temperature of +50°C reached.

The results shown in this test report refer only to the sample(s) tested unless otherwise stated. This test report cannot be reproduced, except in full, without prior written permission of the Company.

10.4 Measurement Equipment Used:

EQUIPMENT TYPE	MFR	MODEL NUMBER	SERIAL NUMBER	LAST CAL.	CAL DUE.
Spectrum Analyzer	R&S	FSP 40	100034	05/27/2004	05/26/2005
Spectrum Analyzer	Agilent	E7405A	US41160416	08/27/2004	08/26/2005
Low Loss Cable	HUBER+SUHNER	SUCOFLEX 104PEA	N/A	N/A	N/A
Attenuator	Mini-Circuit	BW-S6W5	N/A	10/07/2004	10/06/2005

10.5 Measurement Result

Reference Frequency: PCS Mid Channel 1880 MHz @ 25°C				
Limit: +/- 2.5 ppm = 4700 Hz				
Power Supply	Environment	Frequency	Delta (Hz)	Limit (Hz)
Vdc	Temperature (°C)	(MHz)		
3.6	25	1880.06499	300.00	4700
3.6	-30	1880.06559	-300.00	4700
3.6	-20	1880.06553	-240.00	4700
3.6	-10	1880.06569	-400.00	4700
3.6	0	1880.06493	360.00	4700
3.6	10	1880.06526	30.00	4700
3.6	20	1880.06529	0.00	4700
3.6	30	1880.06546	-170.00	4700
3.6	40	1880.06546	-170.00	4700
3.6	50	1880.06563	-340.00	4700

Note: The battery is rated 3.6V dc.

The results shown in this test report refer only to the sample(s) tested unless otherwise stated. This test report cannot be reproduced, except in full, without prior written permission of the Company.

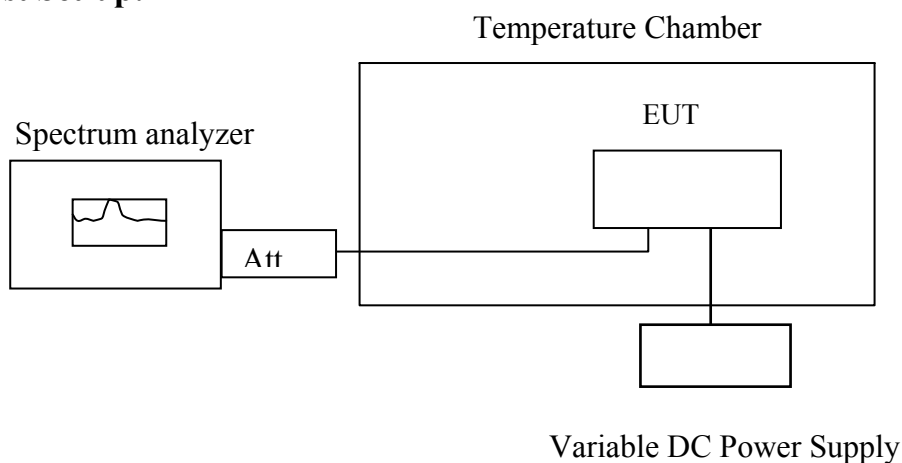
11. FREQUENCY STABILITY V.S. VOLTAGE MEASUREMENT

11.1 Standard Applicable

According to FCC §2.1055, FCC §24.235,

Frequency Tolerance: 2.5 ppm

11.2 Test Set-up:



Note: Measurement setup for testing on Antenna connector

11.3 Measurement Procedure

Set chamber temperature to 25°C. Use a variable AC power supply / DC power source to power the EUT and set the voltage to rated voltage. Set the spectrum analyzer RBW low enough to obtain the desired frequency resolution and recorded the frequency.

Reduce the input voltage to specified extreme voltage variation (+/- 15%) and endpoint, record the maximum frequency change.

11.4 Measurement Equipment Used:

EQUIPMENT TYPE	MFR	MODEL NUMBER	SERIAL NUMBER	LAST CAL.	CAL DUE.
Spectrum Analyzer	R&S	FSP 40	100034	05/27/2004	05/26/2005
Spectrum Analyzer	Agilent	E7405A	US41160416	08/27/2004	08/26/2005
Low Loss Cable	HUBER+SUHNER	SUCOFLEX 104PEA	N/A	N/A	N/A
Attenuator	Mini-Circuit	BW-S6W5	N/A	10/07/2004	10/06/2005

The results shown in this test report refer only to the sample(s) tested unless otherwise stated. This test report cannot be reproduced, except in full, without prior written permission of the Company.

11.5 Measurement Result

Reference Frequency: PCS Mid Channel 1880 MHz @ 25°C				
Limit: +/- 2.5 ppm = 4700 Hz				
Power Supply	Environment	Frequency	Delta (Hz)	Limit (Hz)
Vdc	Temperature (°C)	(MHz)		
3.3	25	1880.0676	0.00	4700
3.6	25	1880.0676	0.00	4700
4.14	25	1880.0676	0.00	4700
3.2 (End Point)	25	1880.0676	0.00	4700

Note: The battery is rated 3.6V dc.

The results shown in this test report refer only to the sample(s) tested unless otherwise stated. This test report cannot be reproduced, except in full, without prior written permission of the Company.

12. AC POWER LINE CONDUCTED EMISSION TEST

12.1 Standard Applicable

According to §15.207. The emission value for frequency within 150KHz to 30MHz shall not exceed criteria of below chart.

Frequency range MHz	Limits dB(uV)	
	Quasi-peak	Average
0.15 to 0.50	66 to 56	56 to 46
0.50 to 5	56	46
5 to 30	60	50
Note		
1.The lower limit shall apply at the transition frequencies		
2.The limit decreases linearly with the logarithm of the frequency in the range 0.15 MHz to 0.50 MHz.		

12.2 EUT Setup

1. The conducted emission tests were performed in the test site, using the setup in accordance with the ANSI C63.4-2001.
2. The EUT was plug-in DC power adaptor and was placed on the center of the back edge on the test table. The peripherals like earphone was placed on the side of the EUT. The rear of the EUT and peripherals were placed flushed with the rear of the tabletop.
3. The Power adaptor was connected with 110Vac/60Hz power source.

12.3 Measurement Procedure

1. The EUT was placed on a table which is 0.8m above ground plane.
2. Maximum procedure was performed on the six highest emissions to ensure EUT compliance.
3. Repeat above procedures until all frequency measured were complete.

The results shown in this test report refer only to the sample(s) tested unless otherwise stated. This test report cannot be reproduced, except in full, without prior written permission of the Company.

12.4 Measurement Equipment Used:

Conducted Emission Test Site					
EQUIPMENT TYPE	MFR	MODEL NUMBER	SERIAL NUMBER	LAST CAL.	CAL DUE.
EMC Analyzer	HP	8594EM	3624A00203	12/31/2004	12/30/2005
EMI Test Receiver	R&S	ESCS30	828985/004	01/15/2005	01/14/2006
LISN	Rolf-Heine	NNB-2/16Z	99012	12/30/2004	12/29/2005
LISN	Rolf-Heine	NNB-2/16Z	99013	11/06/2004	11/05/2005

12.5 Measurement Result

The initial step in collecting conducted data is a spectrum analyzer peak scan of the measurement range. Significant peaks are then marked as shown on the following data page, and these signals are then quasi-peaked.

The results shown in this test report refer only to the sample(s) tested unless otherwise stated. This test report cannot be reproduced, except in full, without prior written permission of the Company.

AC POWER LINE CONDUCTED EMISSION TEST DATA

Operation Mode:	Normal Operating			Test Date :	Mar. 25, 2005
Temperature :	23 °C	Humidity :	62 %	Test By:	Henk

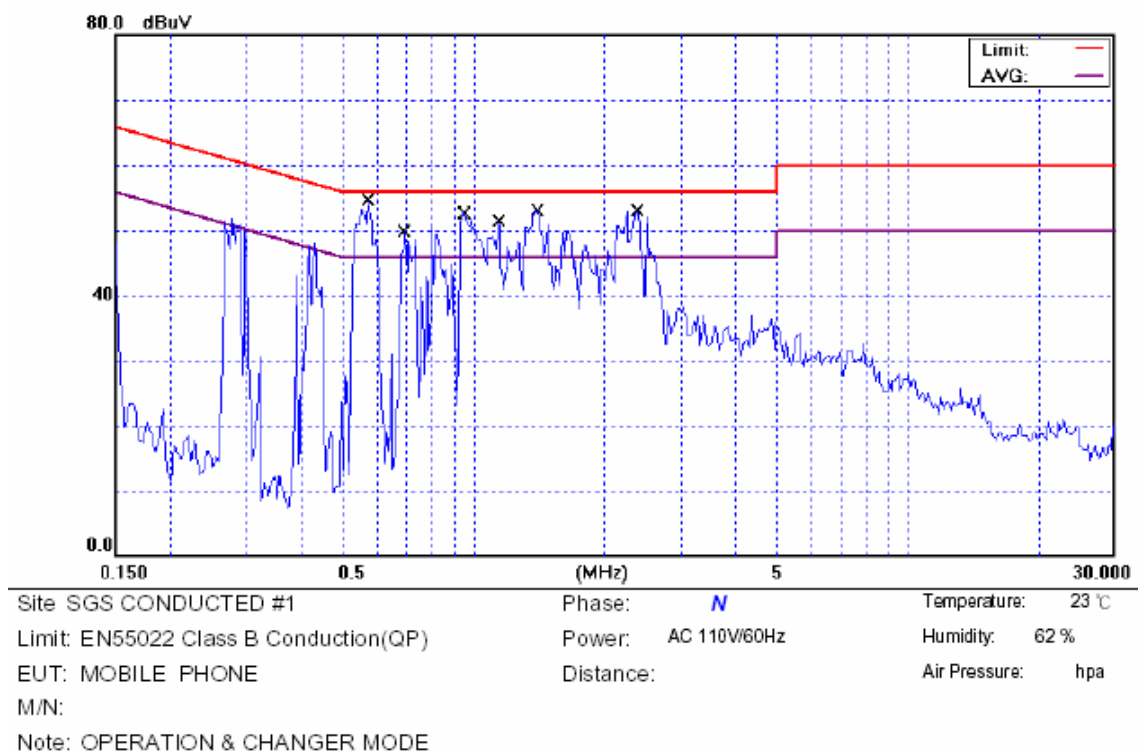
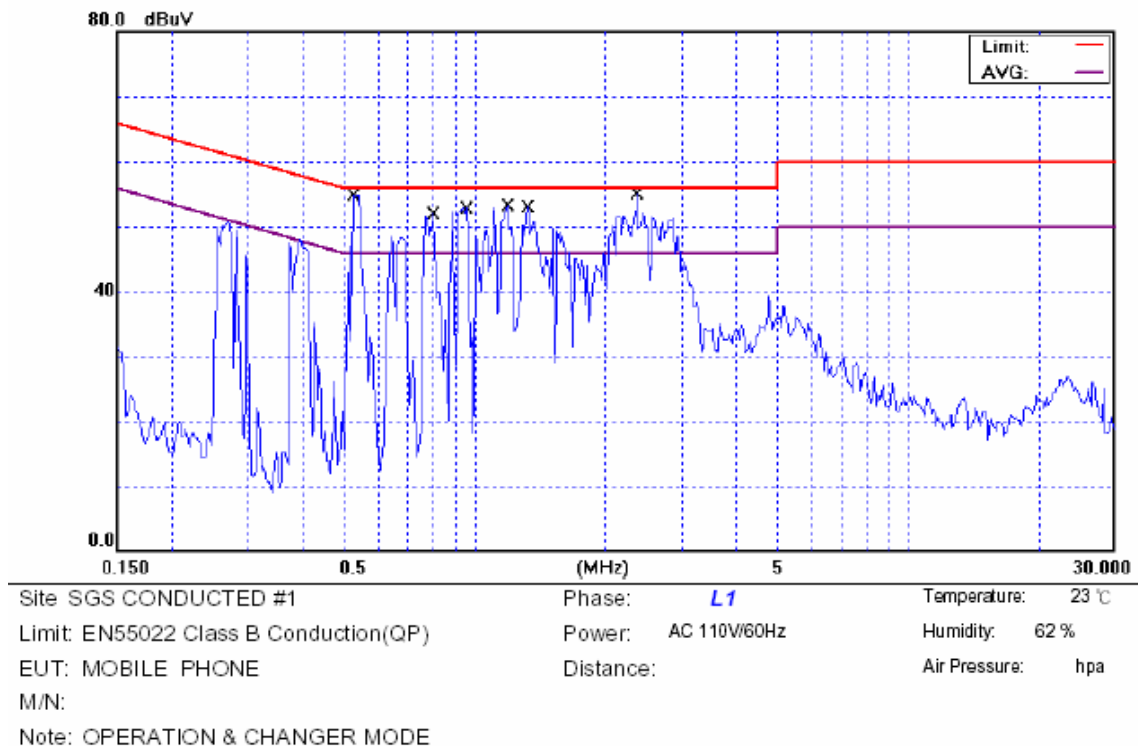
FREQ MHz	Q.P. Raw dBuV	AVG Raw dBuV	Q.P. Limit dBuV	AVG Limit dBuV	Q.P. Margin dB	AVG Margin dB	NOTE
0.525	51.51	20.07	56.00	46.00	-4.49	-25.93	L1
0.806	46.50	15.98	56.00	46.00	-9.50	-30.02	L1
0.959	47.55	25.28	56.00	46.00	-8.45	-20.72	L1
1.197	46.99	19.86	56.00	46.00	-9.01	-26.14	L1
1.326	47.25	14.56	56.00	46.00	-8.75	-31.44	L1
2.373	46.75	25.51	56.00	46.00	-9.25	-20.49	L1
0.572	51.63	38.08	56.00	46.00	-4.37	-7.92	L2
0.697	46.28	29.36	56.00	46.00	-9.72	-16.64	L2
0.951	45.18	20.33	56.00	46.00	-10.82	-25.67	L2
1.146	45.20	29.33	56.00	46.00	-10.80	-16.67	L2
1.404	48.07	29.90	56.00	46.00	-7.93	-16.10	L2
2.392	43.81	---	56.00	46.00	-12.19	---	L2

Remark :

- (1) Measuring frequencies from 0.15 MHz to 30MHz °
- (2) The emissions measured in frequency range from 0.15 MHz to 30MHz were made with an instrument using Qusia-Peak detector and Average detector.
- (3) “---” denotes the emission level was or more than 2dB below the Average limit, so no re-check anymore.
- (4) The IF bandwidth of SPA between 0.15MHz to 30MHz was 10KHz;
The IF bandwidth of Test Receiver between 0.15MHz to 30MHz was 9KHz;
- (5) L1 = Line One (Hot side) / L2 = Line Two (Neutral side)

The results shown in this test report refer only to the sample(s) tested unless otherwise stated. This test report cannot be reproduced, except in full, without prior written permission of the Company.

Conducted Emission Test Plot



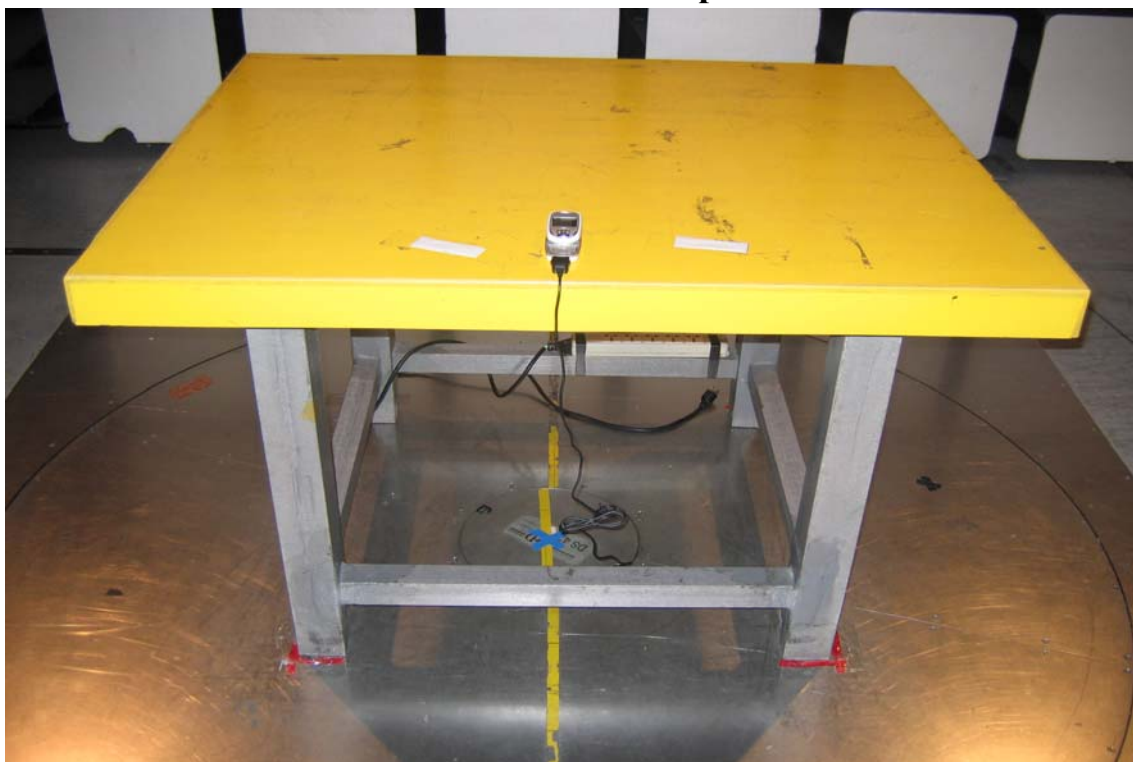
The results shown in this test report refer only to the sample(s) tested unless otherwise stated. This test report cannot be reproduced, except in full, without prior written permission of the Company.

APPENDIX 1

PHOTOGRPHS OF SET UP

The results shown in this test report refer only to the sample(s) tested unless otherwise stated. This test report cannot be reproduced, except in full, without prior written permission of the Company.

Radiated Emission Set up Photos



The results shown in this test report refer only to the sample(s) tested unless otherwise stated. This test report cannot be reproduced, except in full, without prior written permission of the Company.

Conducted Emission Set Up Photos



The results shown in this test report refer only to the sample(s) tested unless otherwise stated. This test report cannot be reproduced, except in full, without prior written permission of the Company.

APPENDIX 2

PHOTOGRPHS OF EUT

The results shown in this test report refer only to the sample(s) tested unless otherwise stated. This test report cannot be reproduced, except in full, without prior written permission of the Company.

All of EUT



Front View of EUT – 1



The results shown in this test report refer only to the sample(s) tested unless otherwise stated. This test report cannot be reproduced, except in full, without prior written permission of the Company.

Front View of EUT – 2



Back View of EUT – 1



The results shown in this test report refer only to the sample(s) tested unless otherwise stated. This test report cannot be reproduced, except in full, without prior written permission of the Company.

Back View of EUT – 2



Left View of EUT

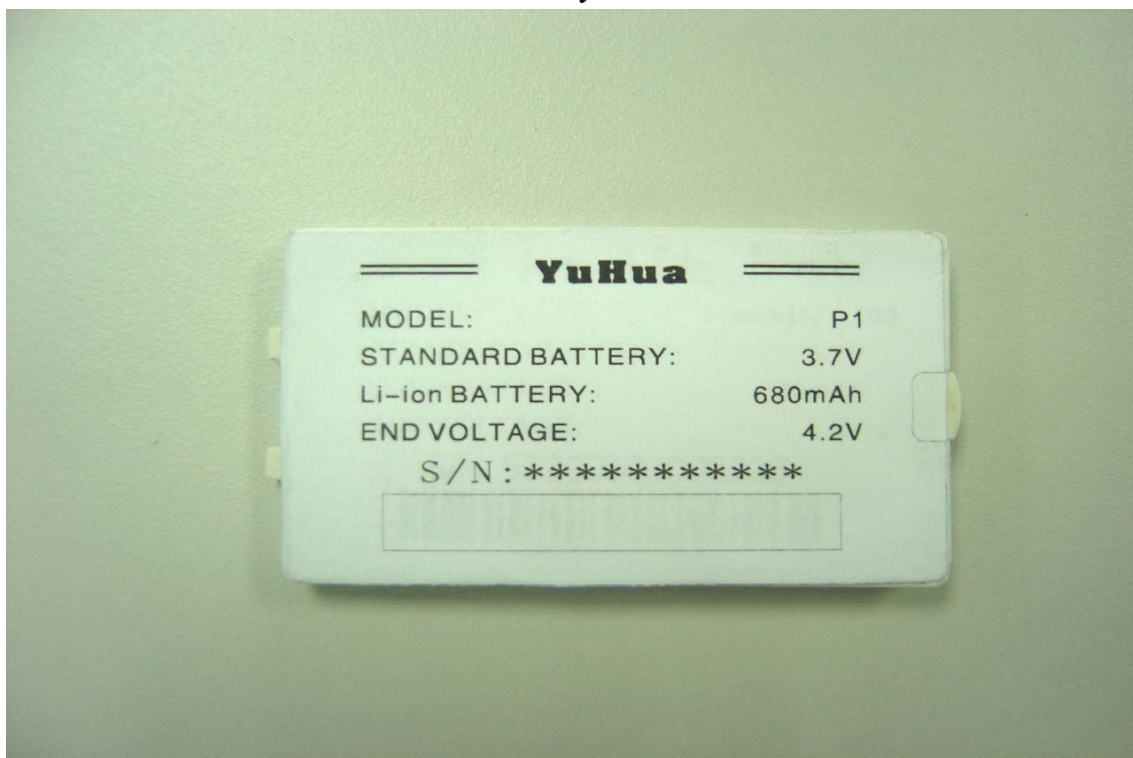


The results shown in this test report refer only to the sample(s) tested unless otherwise stated. This test report cannot be reproduced, except in full, without prior written permission of the Company.

Bottom View of EUT



Battery – 1



The results shown in this test report refer only to the sample(s) tested unless otherwise stated. This test report cannot be reproduced, except in full, without prior written permission of the Company.

Battery – 2

The results shown in this test report refer only to the sample(s) tested unless otherwise stated. This test report cannot be reproduced, except in full, without prior written permission of the Company.

Open View of EUT - 1

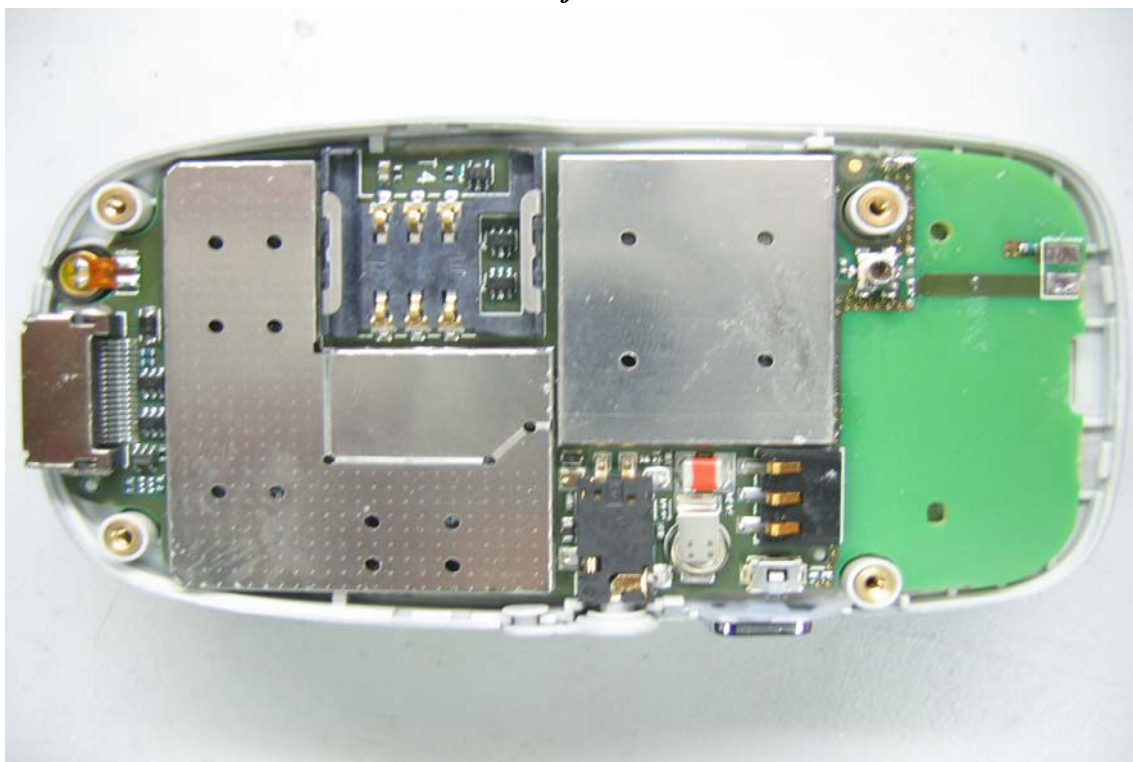


Open View of EUT - 2

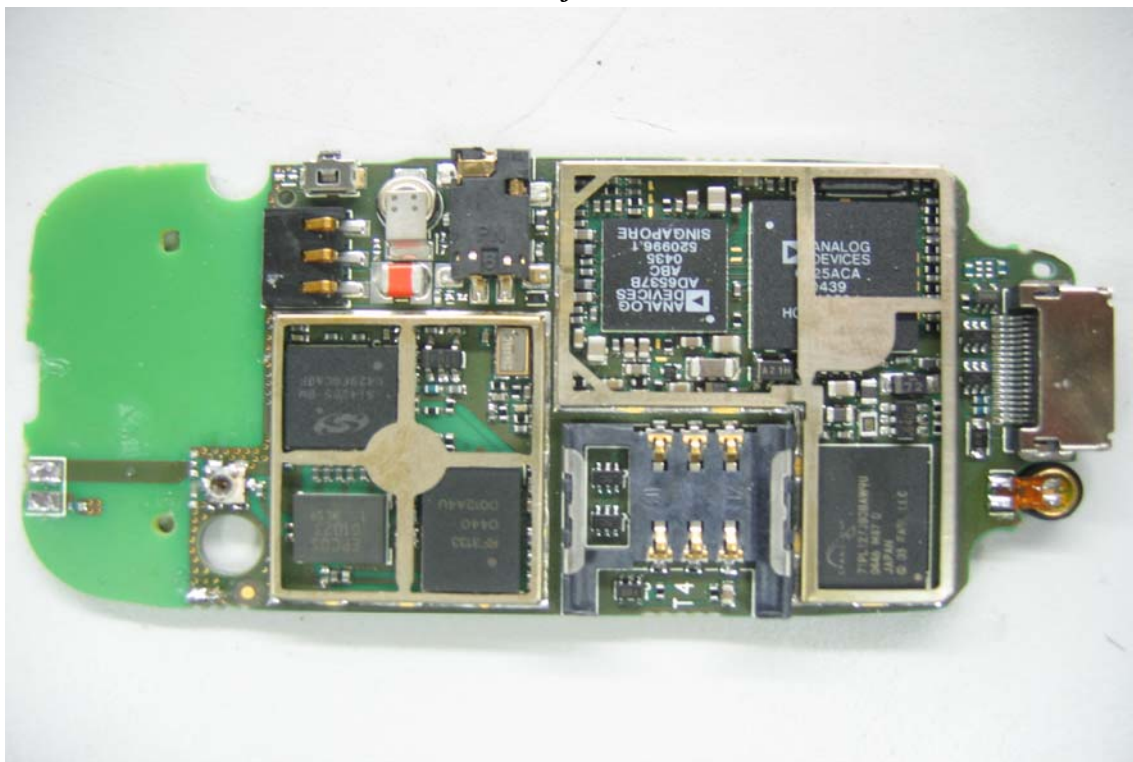


The results shown in this test report refer only to the sample(s) tested unless otherwise stated. This test report cannot be reproduced, except in full, without prior written permission of the Company.

Internal of EUT --- 1

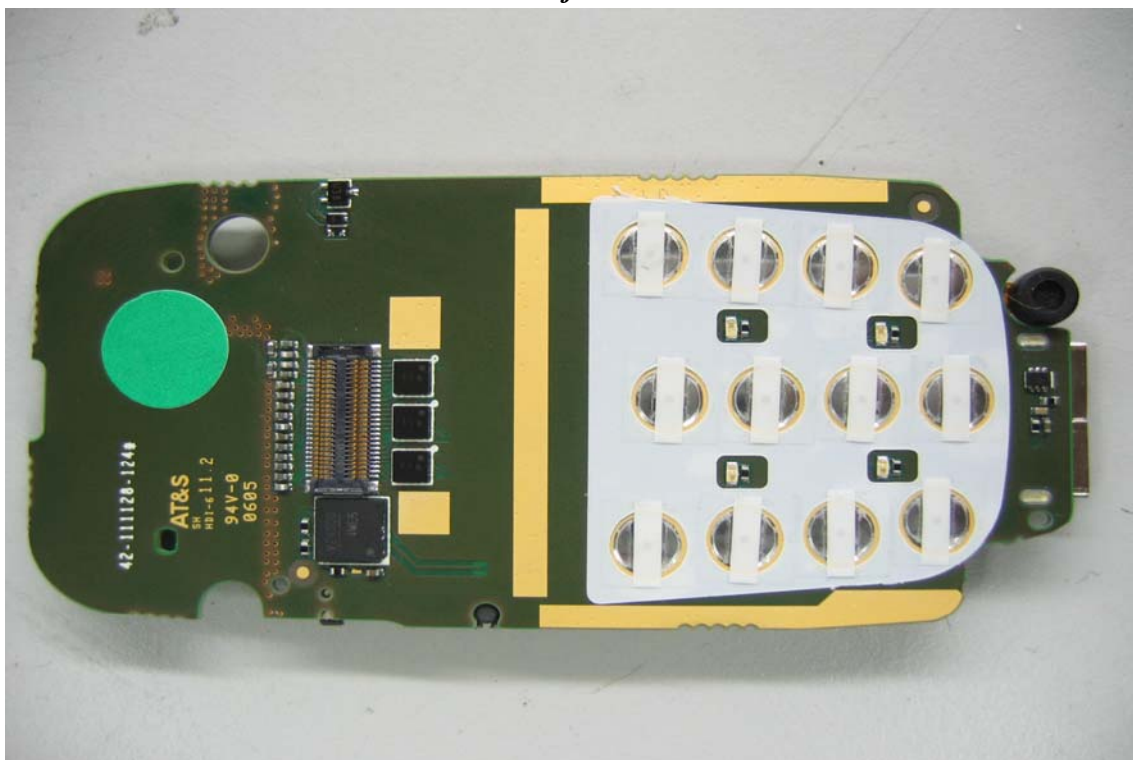


Internal of EUT --- 2

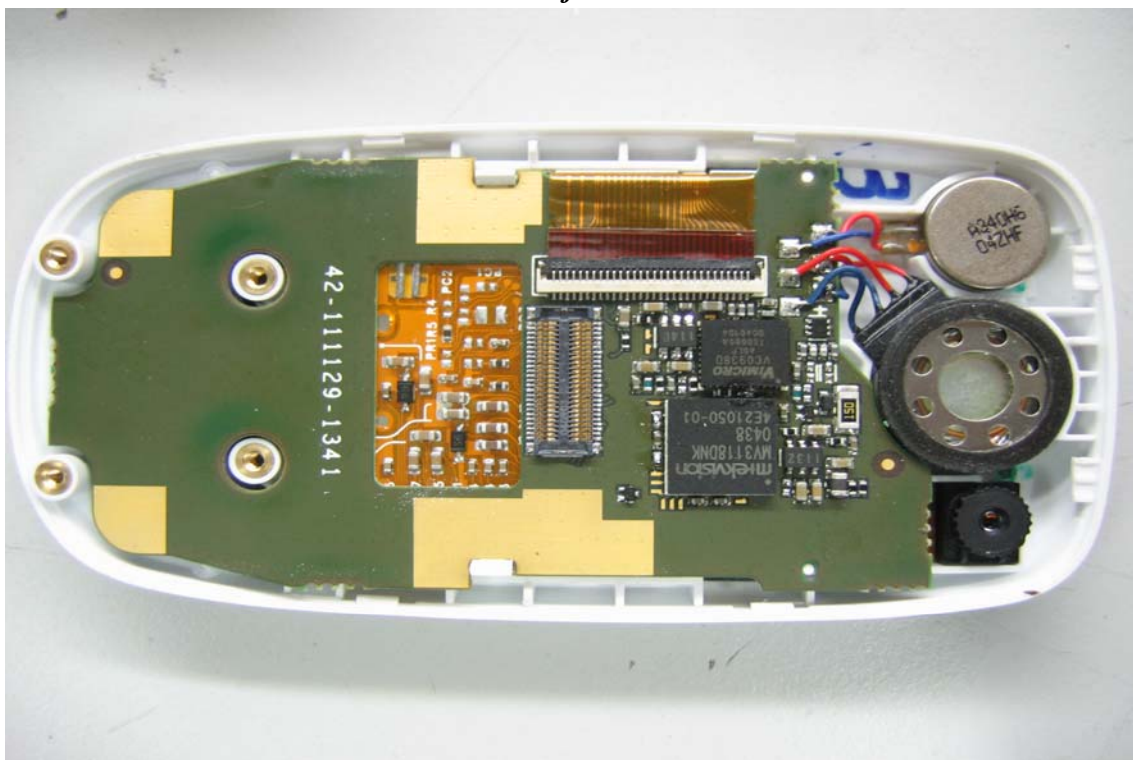


The results shown in this test report refer only to the sample(s) tested unless otherwise stated. This test report cannot be reproduced, except in full, without prior written permission of the Company.

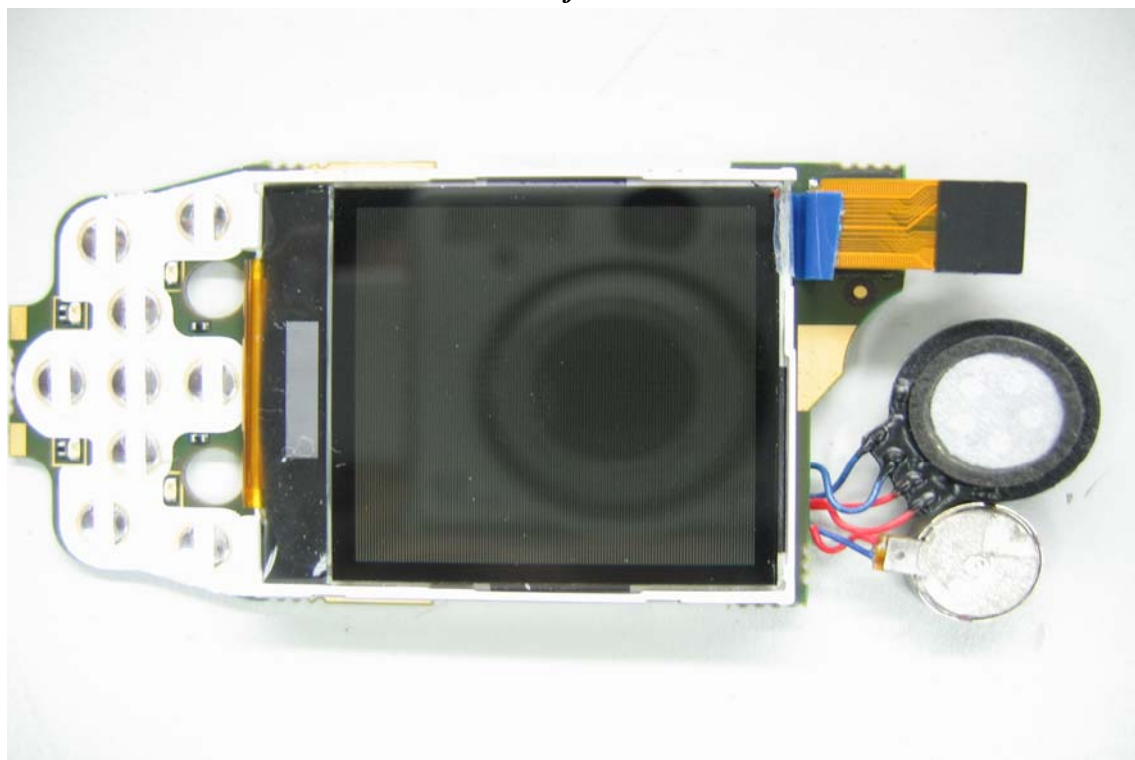
Internal of EUT --- 3



Internal of EUT --- 4



The results shown in this test report refer only to the sample(s) tested unless otherwise stated. This test report cannot be reproduced, except in full, without prior written permission of the Company.

Internal of EUT --- 5

The results shown in this test report refer only to the sample(s) tested unless otherwise stated. This test report cannot be reproduced, except in full, without prior written permission of the Company.