



Model L-2700
Point to Point Radio System
71.0 to 76.0GHz & 81.0 to 86.0GHz

Internal Photographs

www.loeacom.com

10455 Pacific Center Court
San Diego, CA. 92121
858-922-0030

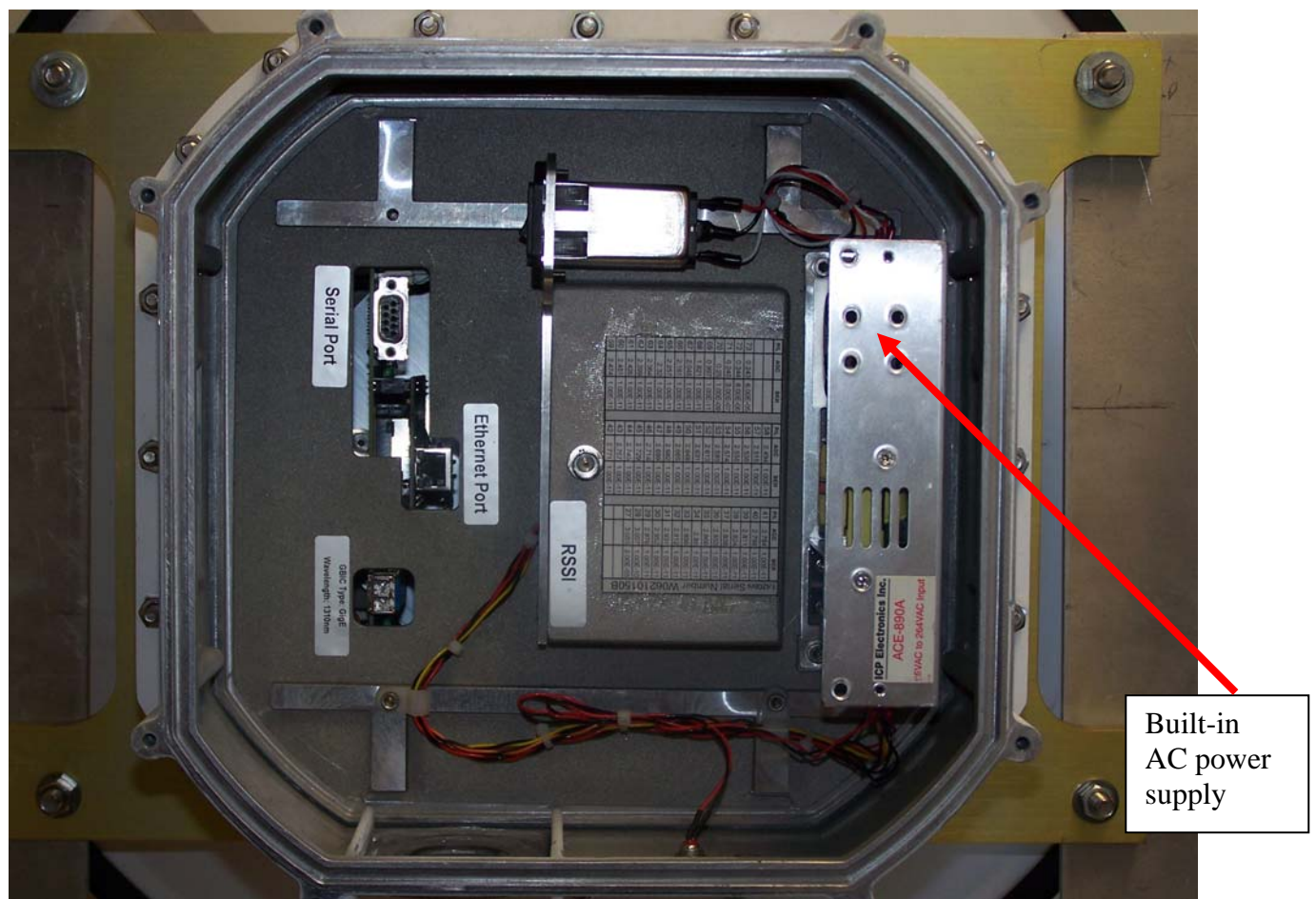


Photo of AC Powered EUT showing service compartment with rear cover removed.

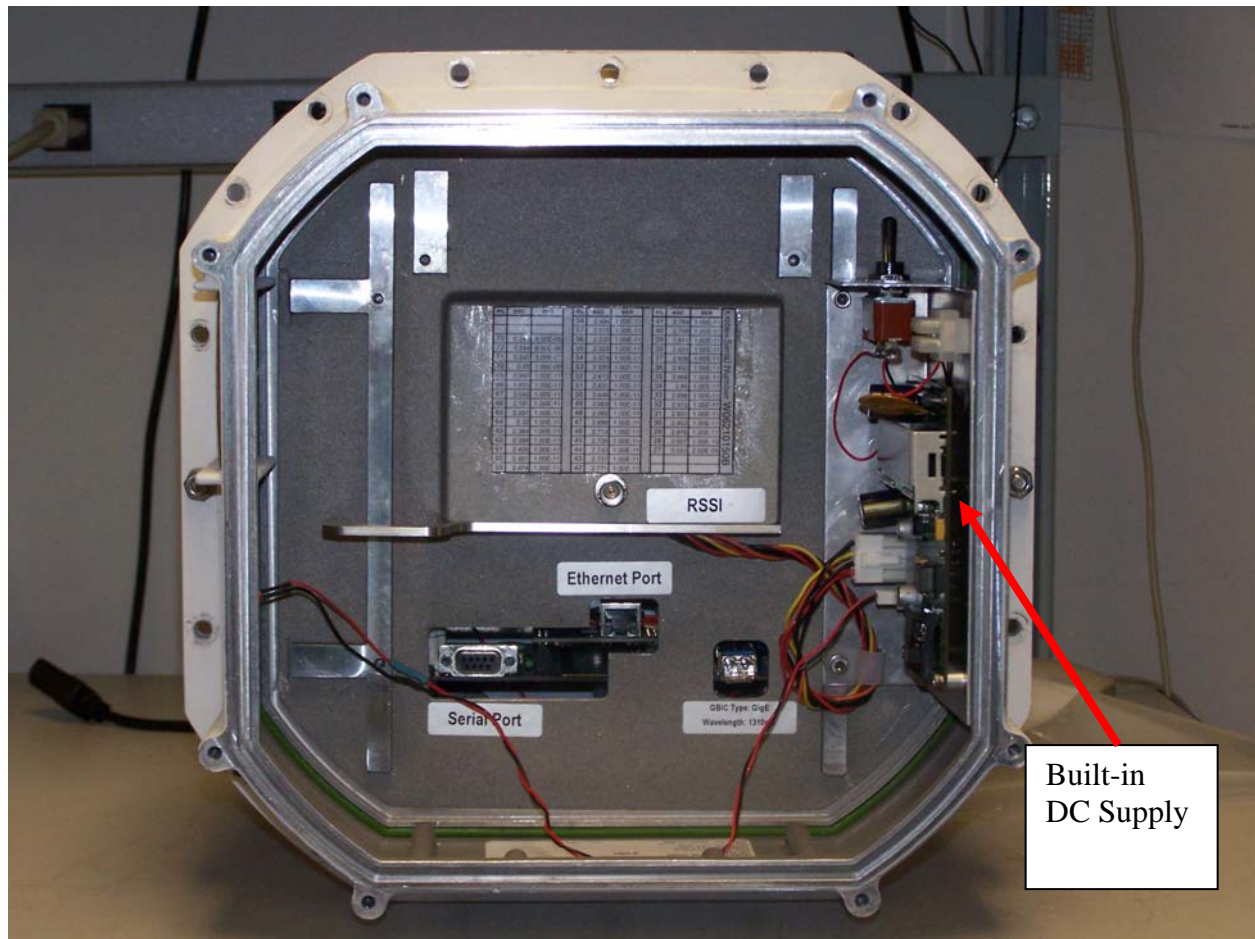


Photo of DC Powered EUT with showing service compartment with rear cover removed.

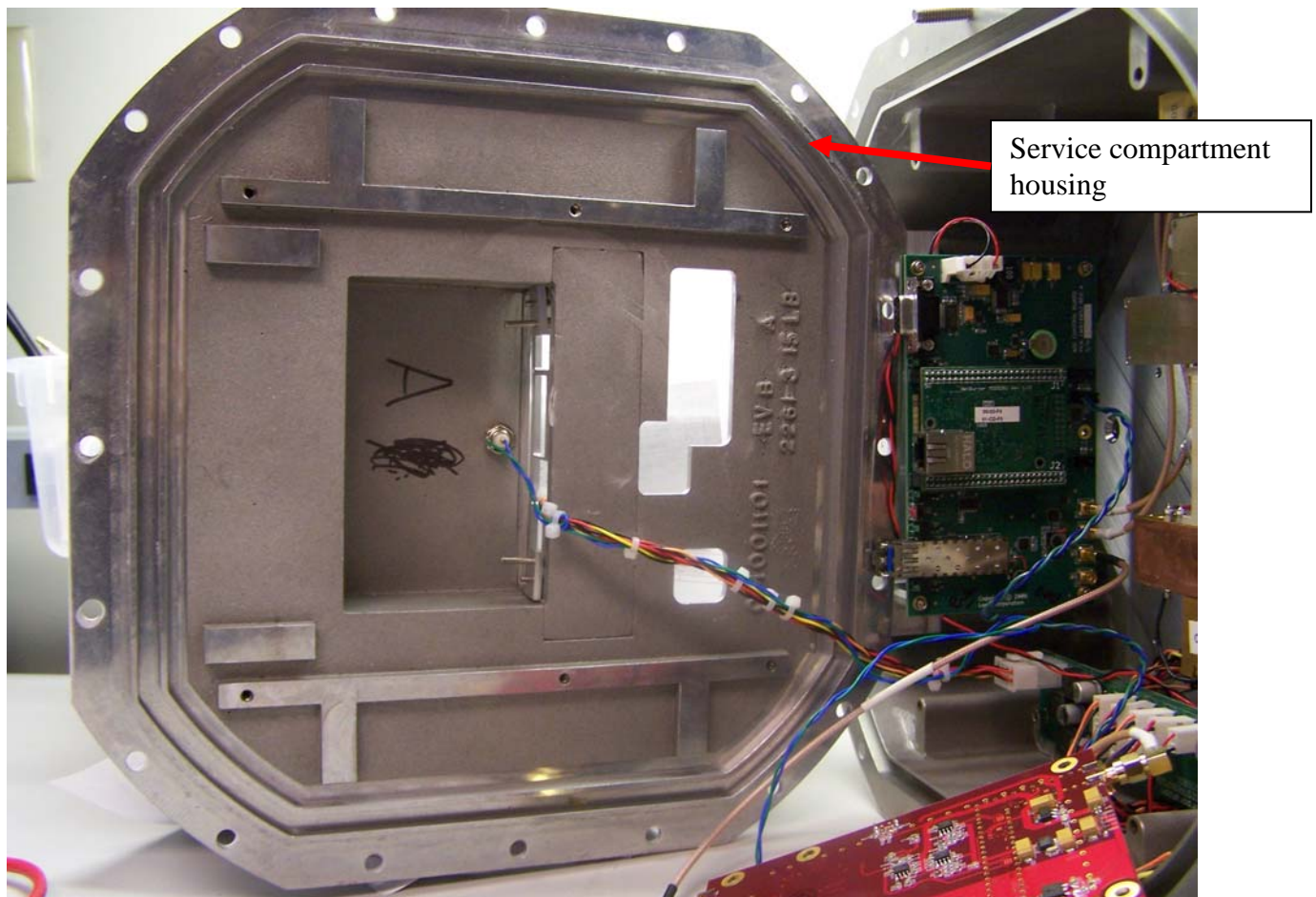
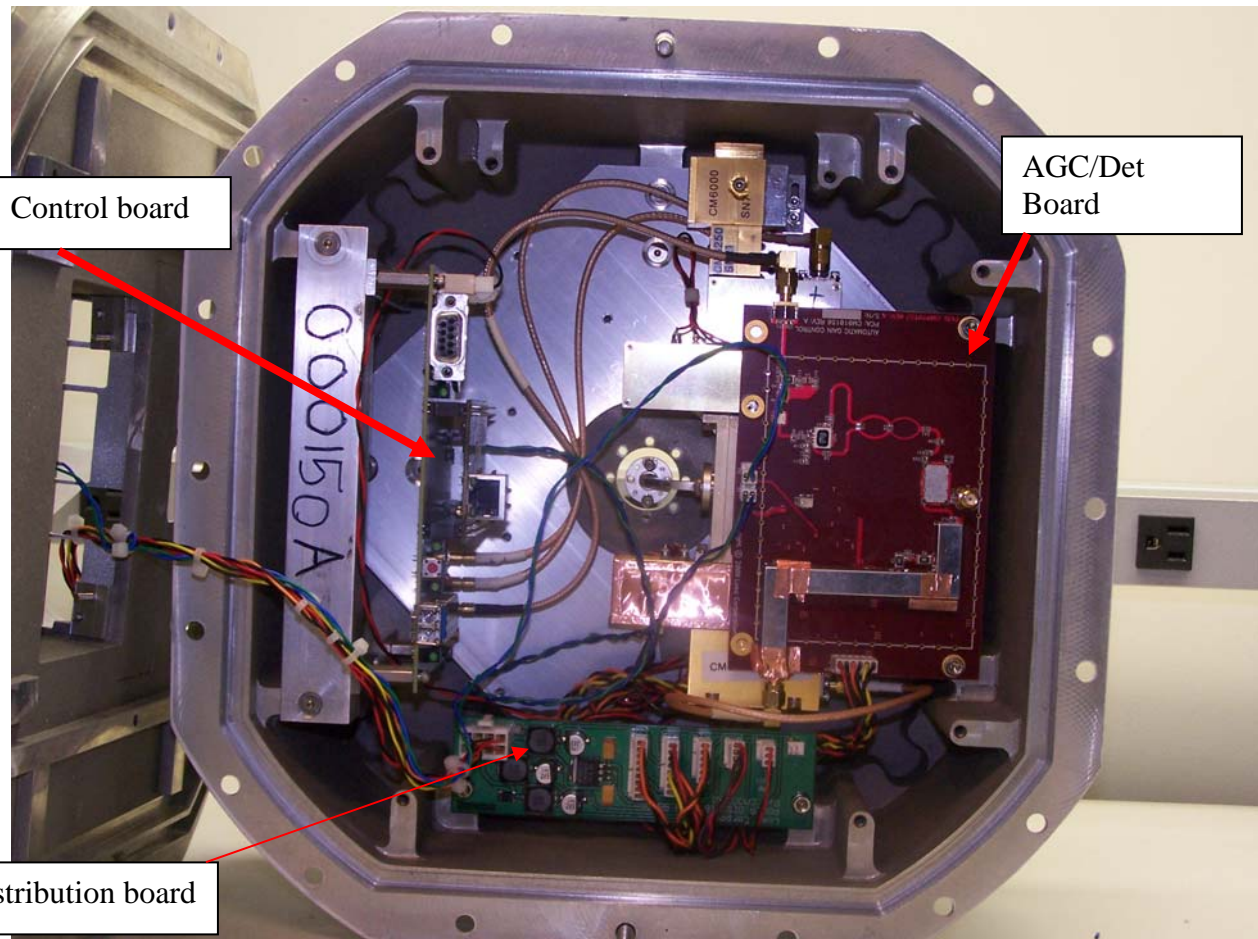
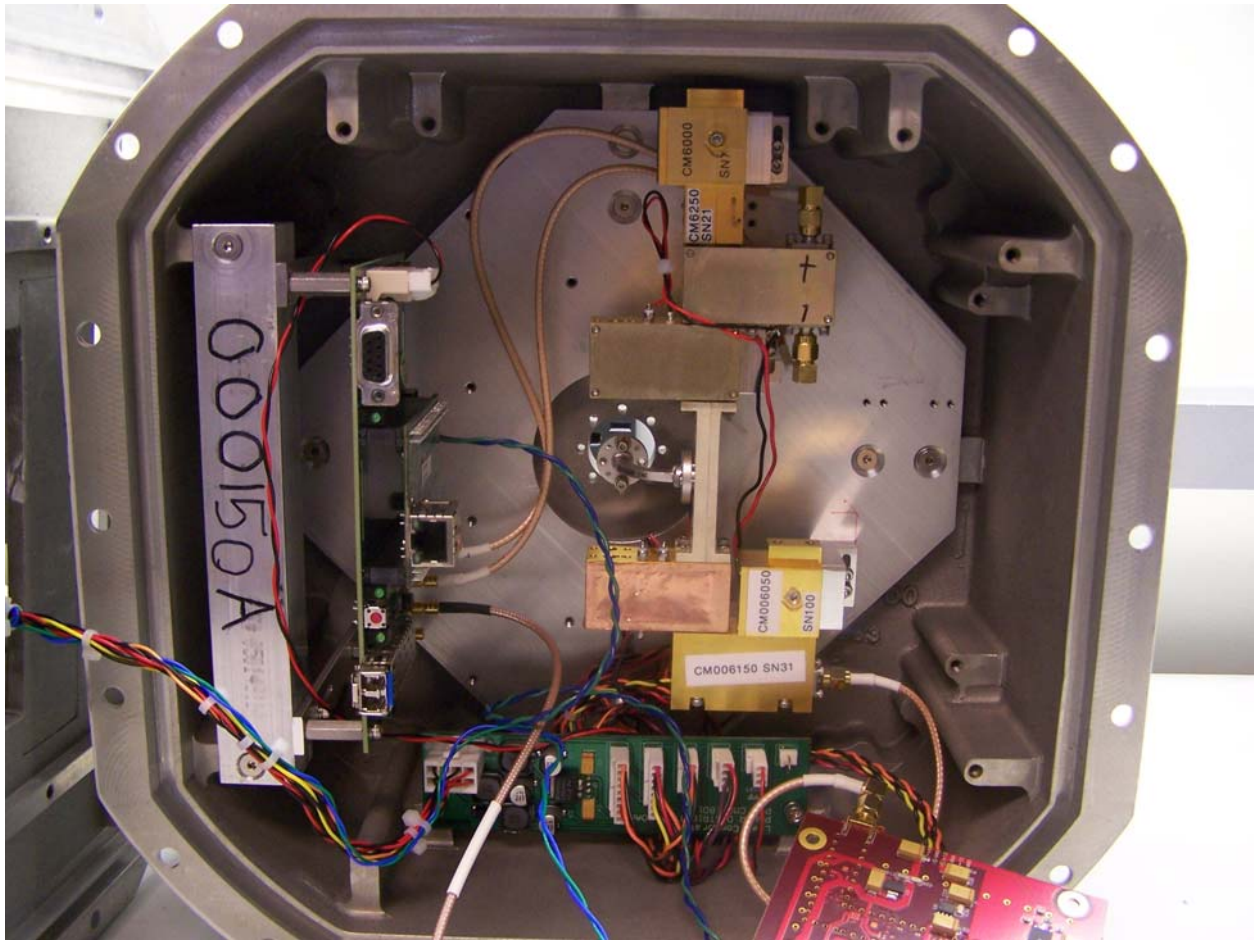


Photo of EUT showing backside of service compartment housing



Internal photo of EUT with service compartment removed from main housing



Internal photo of EUT with AGC/Det board removed showing mmWave circuitry

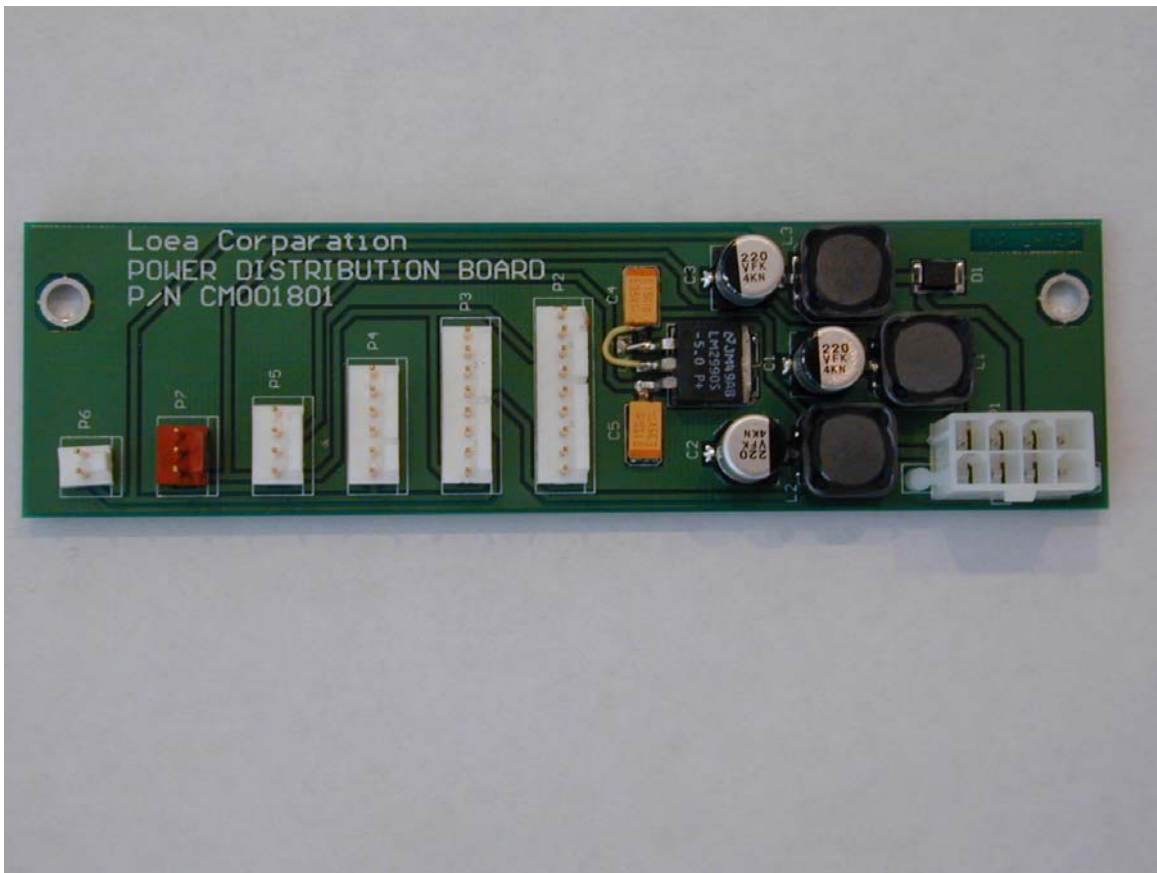


Photo of Power distribution board – Top view

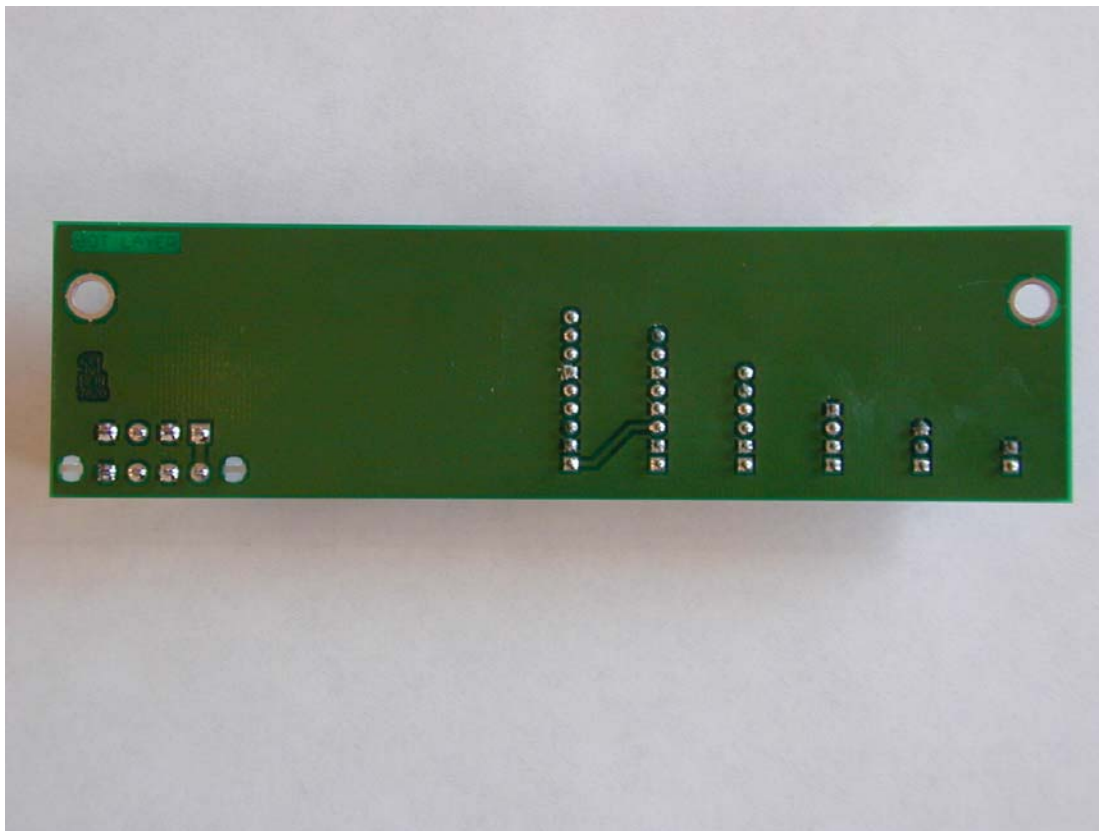


Photo of Power distribution board – Bottom view

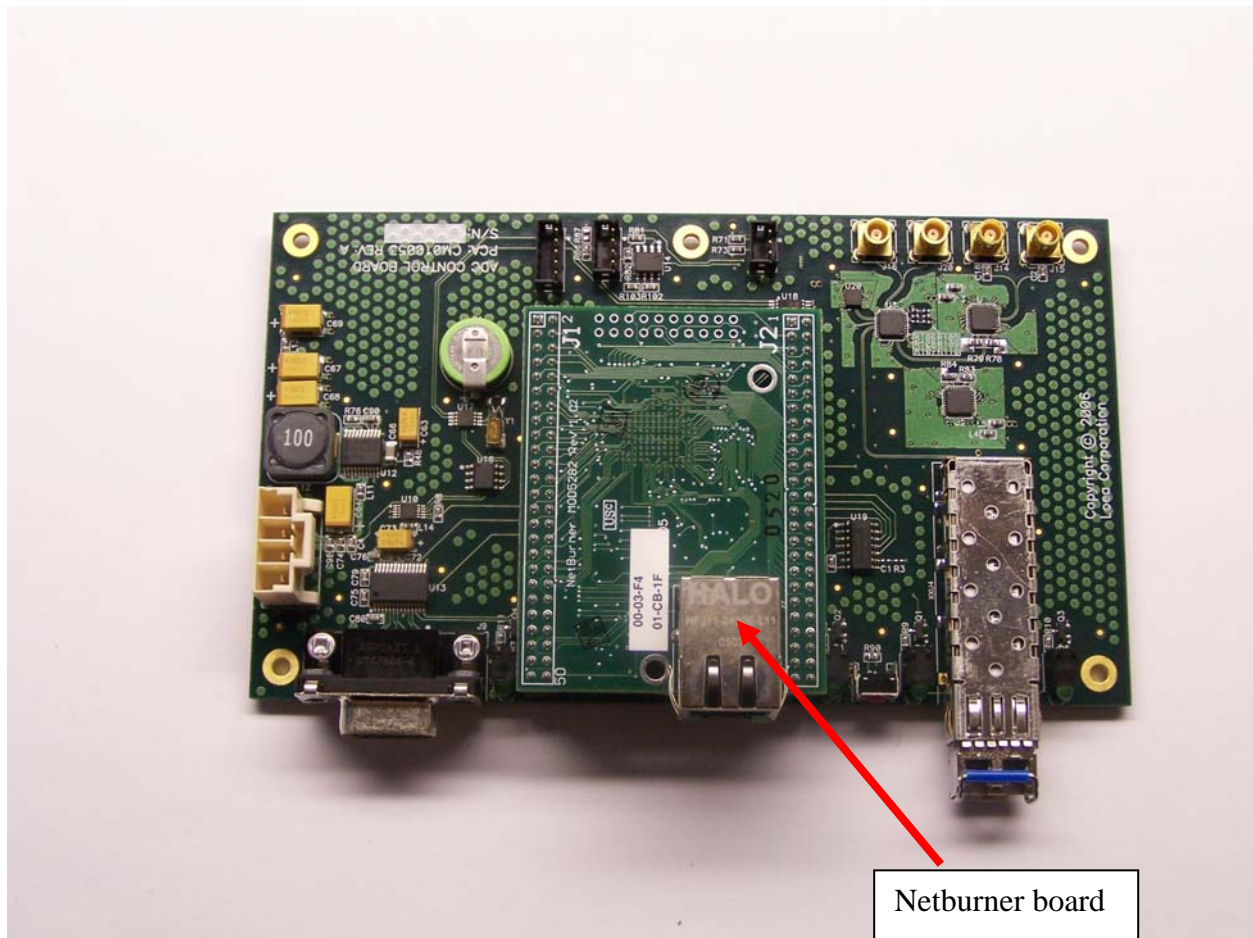


Photo of Control board – Top view



Photo of Control board – Top view with Netburner board removed

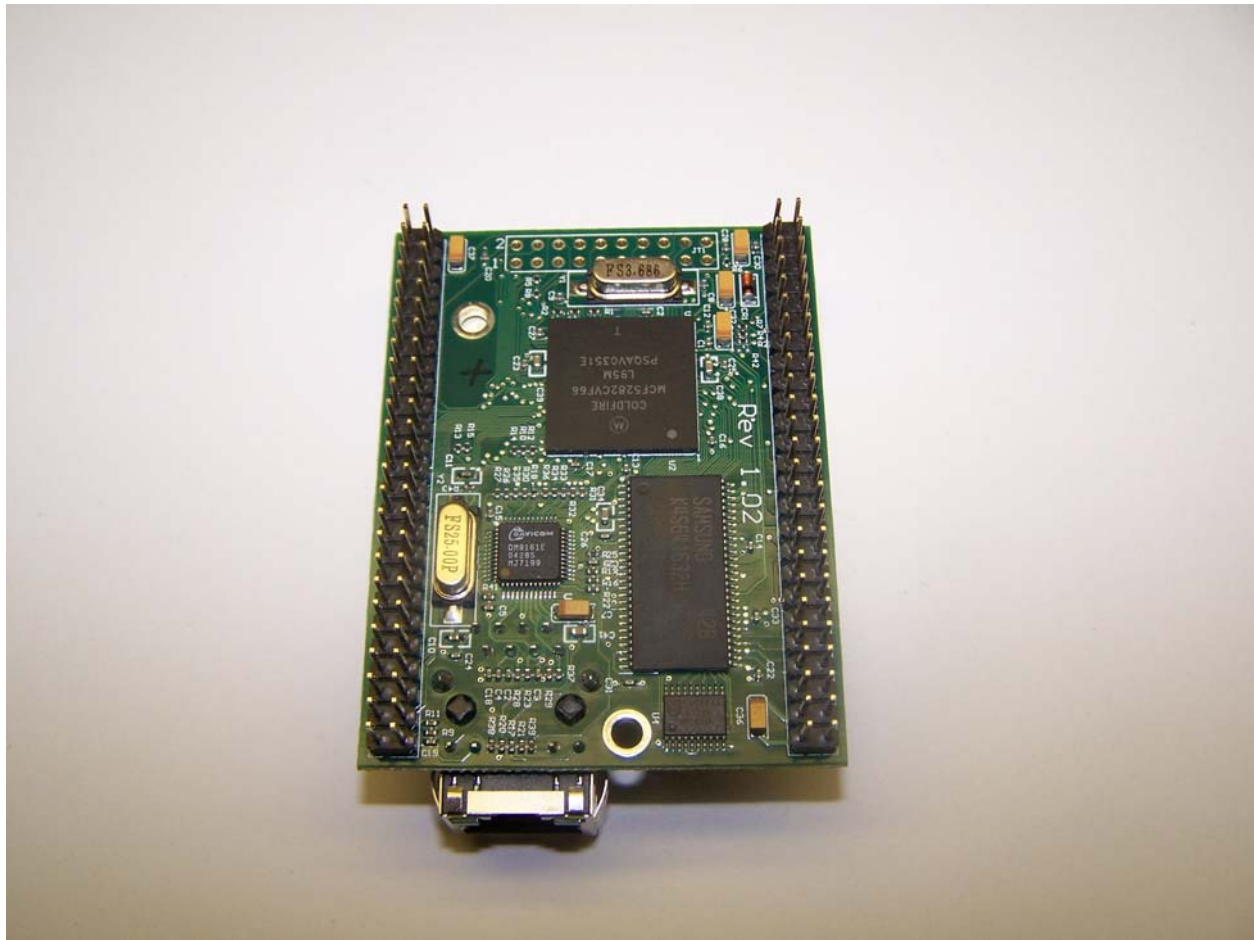


Photo of Netburner board – Bottom view

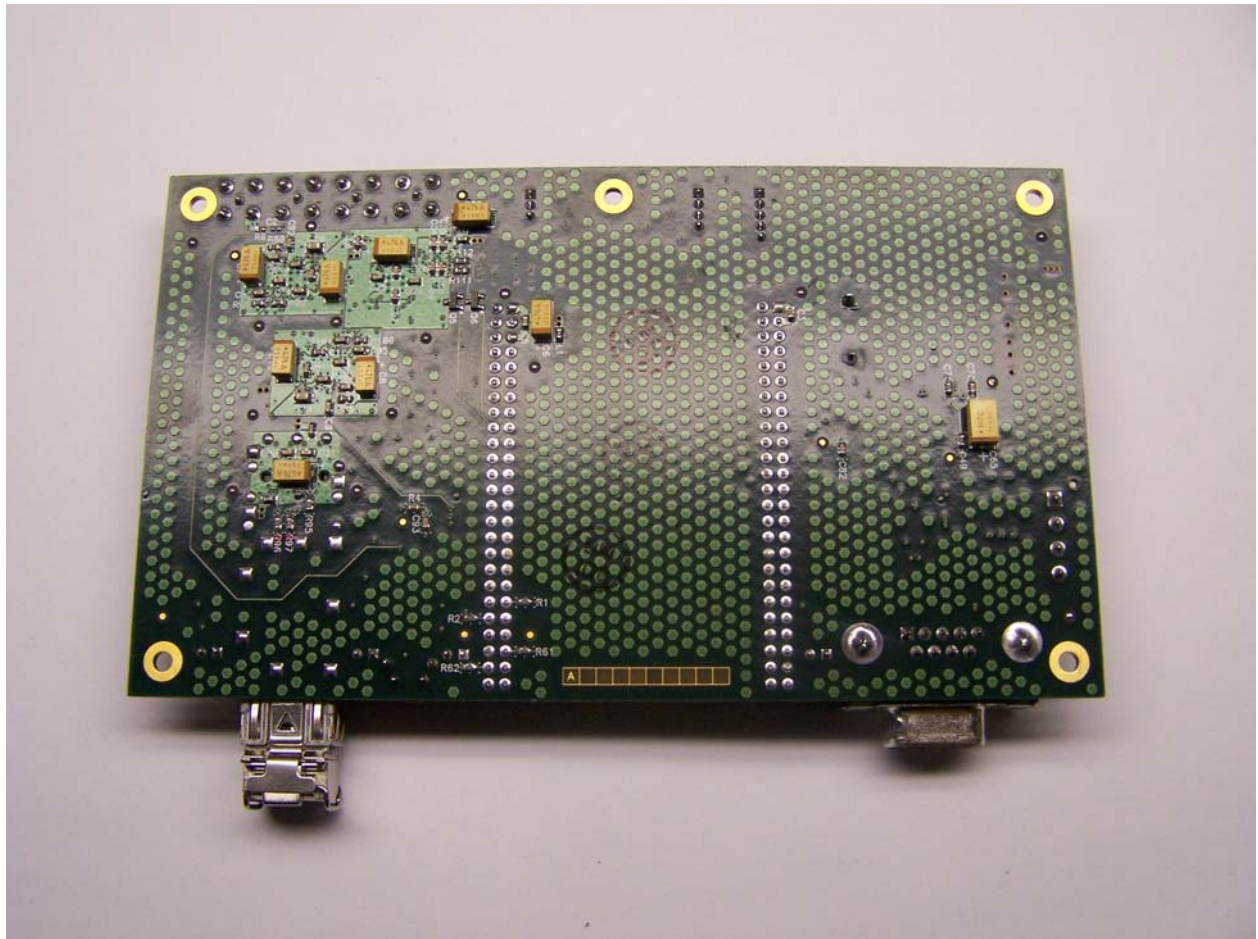


Photo of Control board – Bottom view

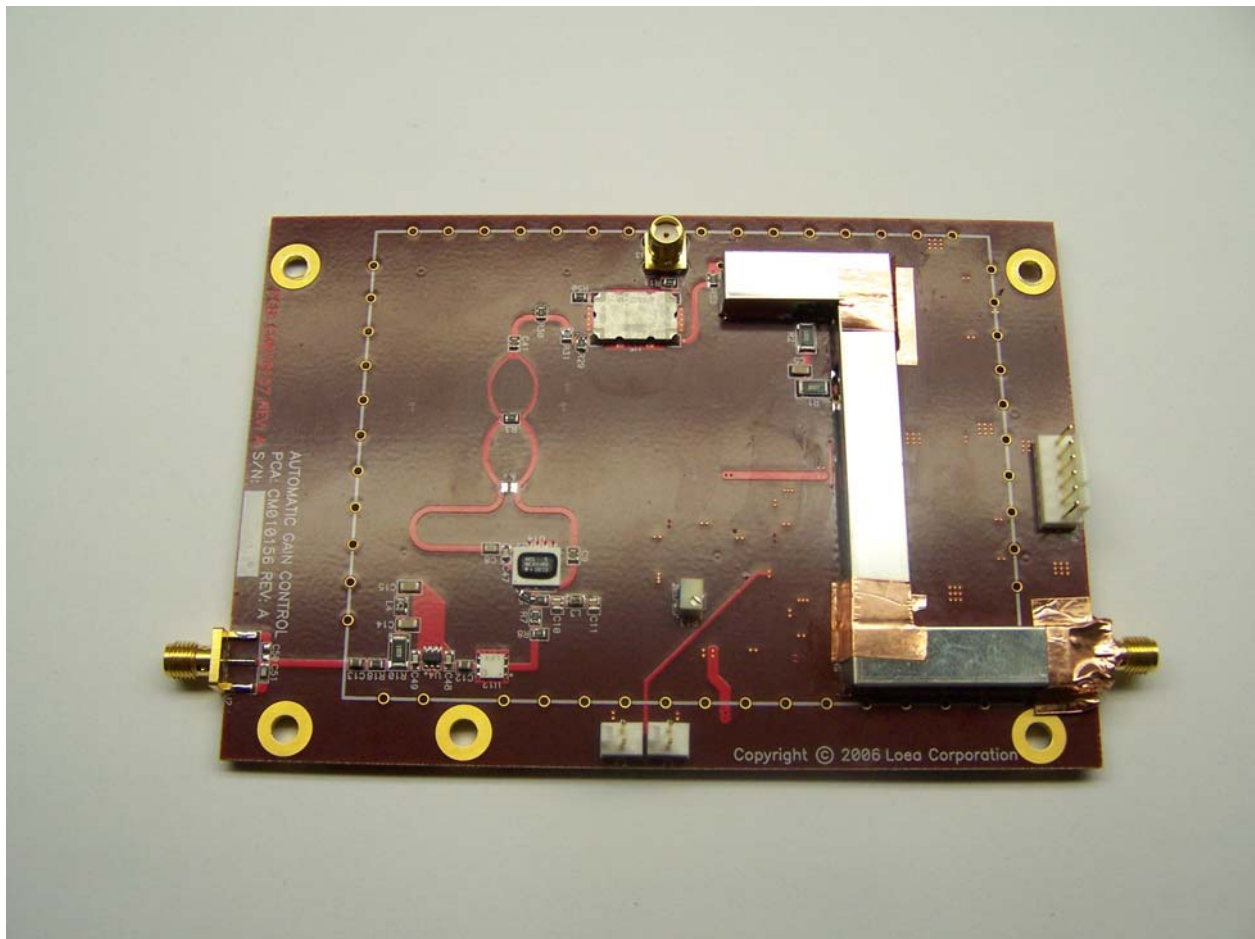


Photo of AGC/Det board – Top view

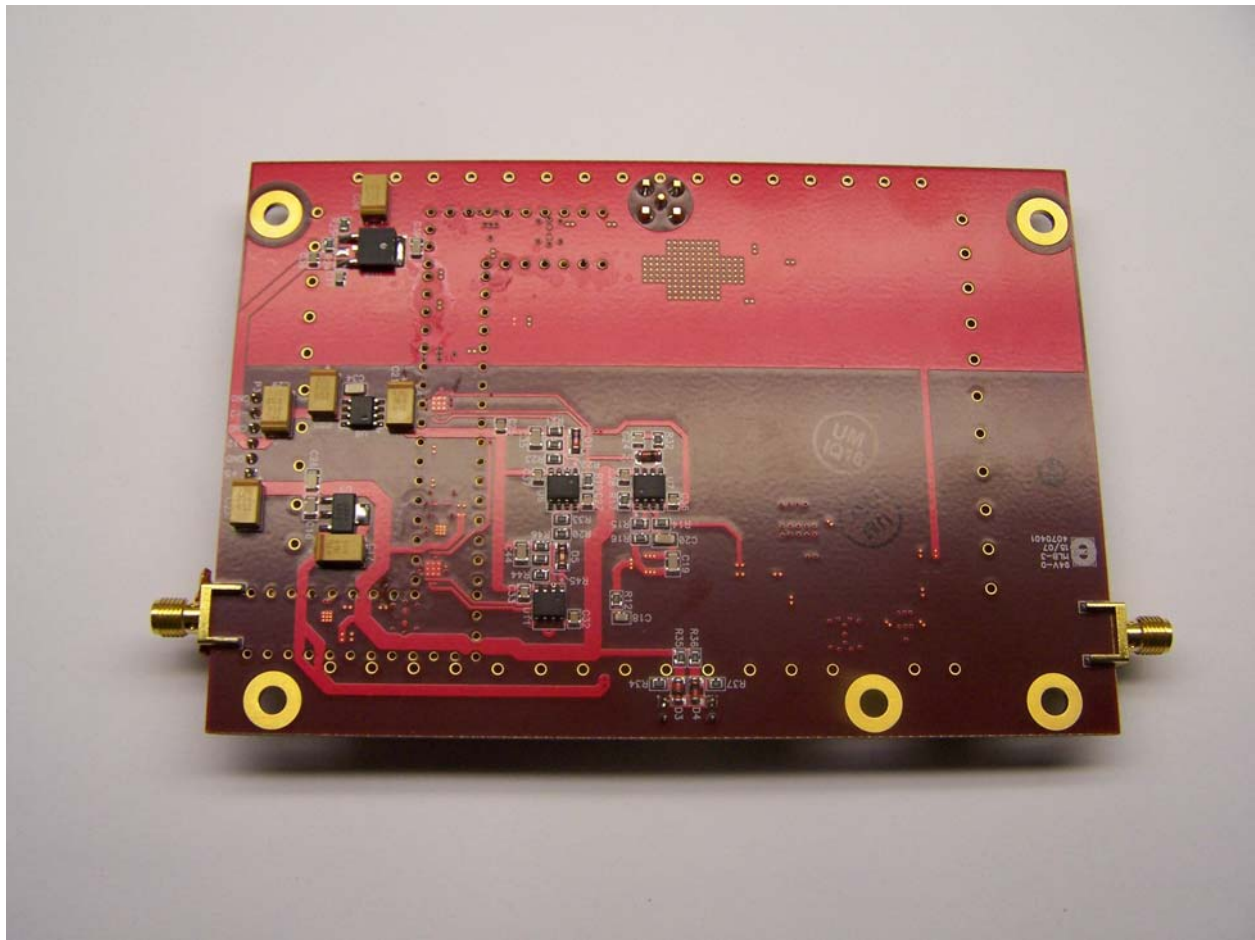


Photo of AGC/Det board – Bottom view