



Model L-1000  
Point to Point Radio System  
71.0 to 76.0GHz & 81.0 to 86.0GHz

**Internal Photographs**

[www.loeacom.com](http://www.loeacom.com)

10455 Pacific Center Court  
San Diego, CA. 92121  
858-761-8214

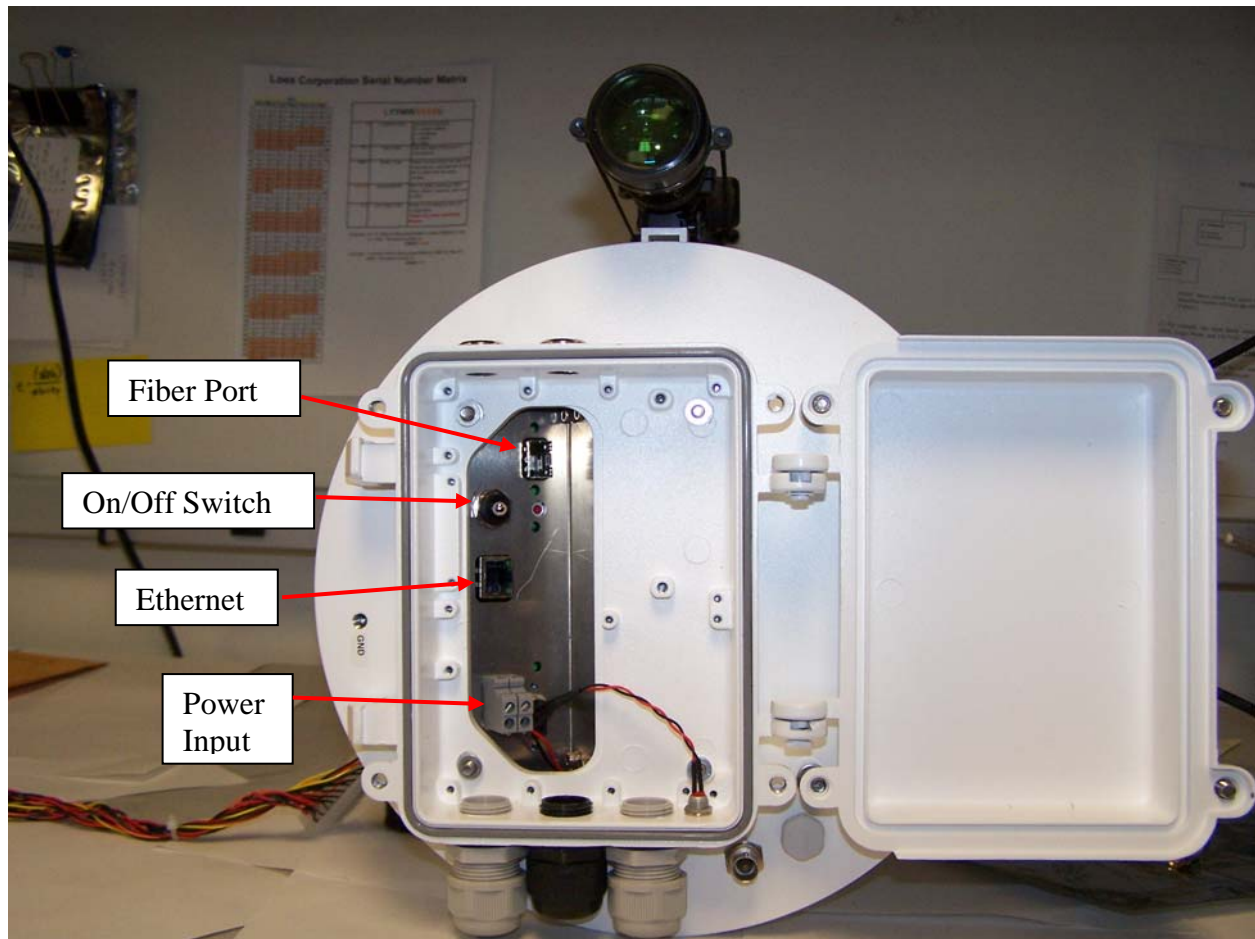


Photo of EUT showing service compartment with rear cover open.

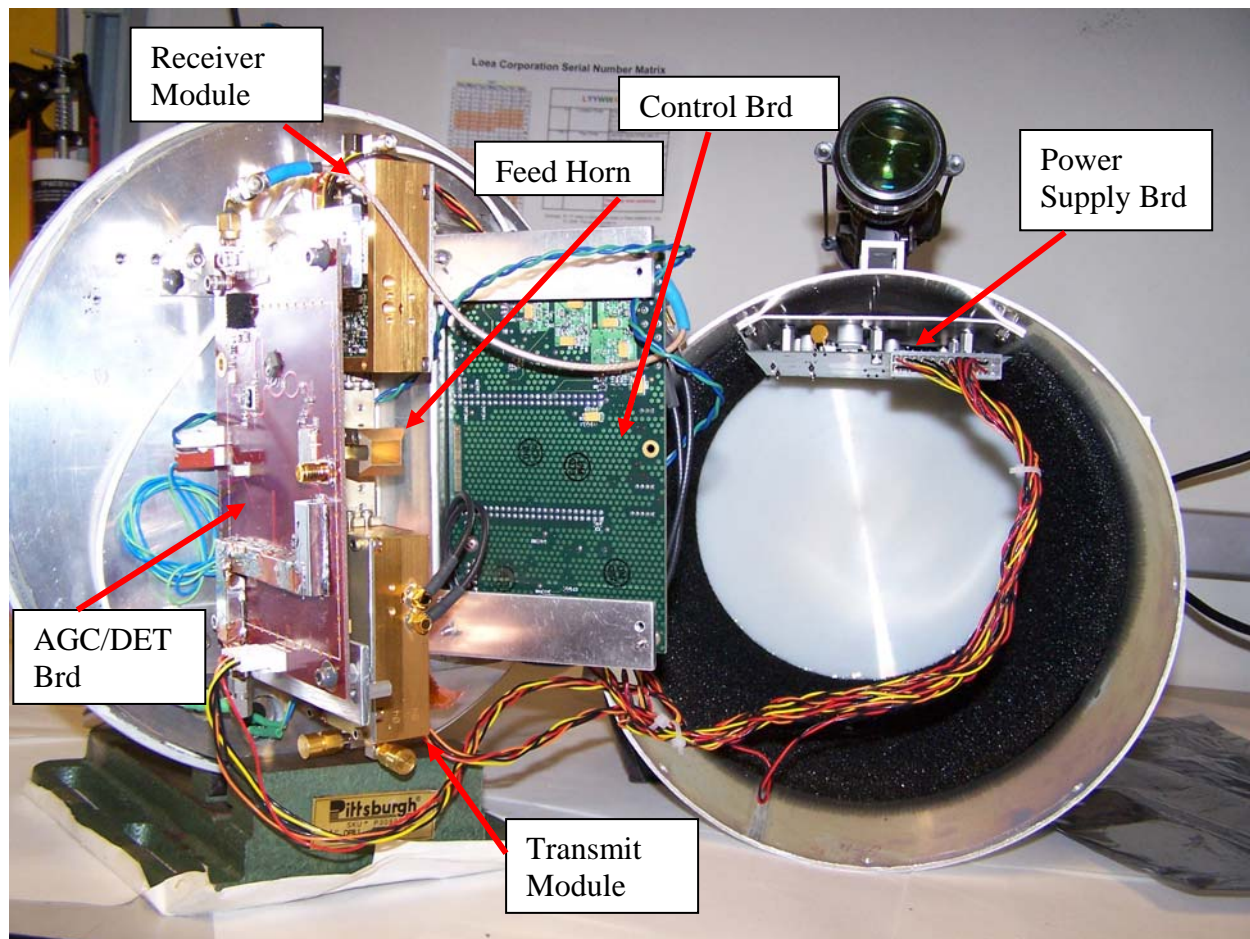


Photo of EUT internals showing backside of service compartment and inside of main housing.

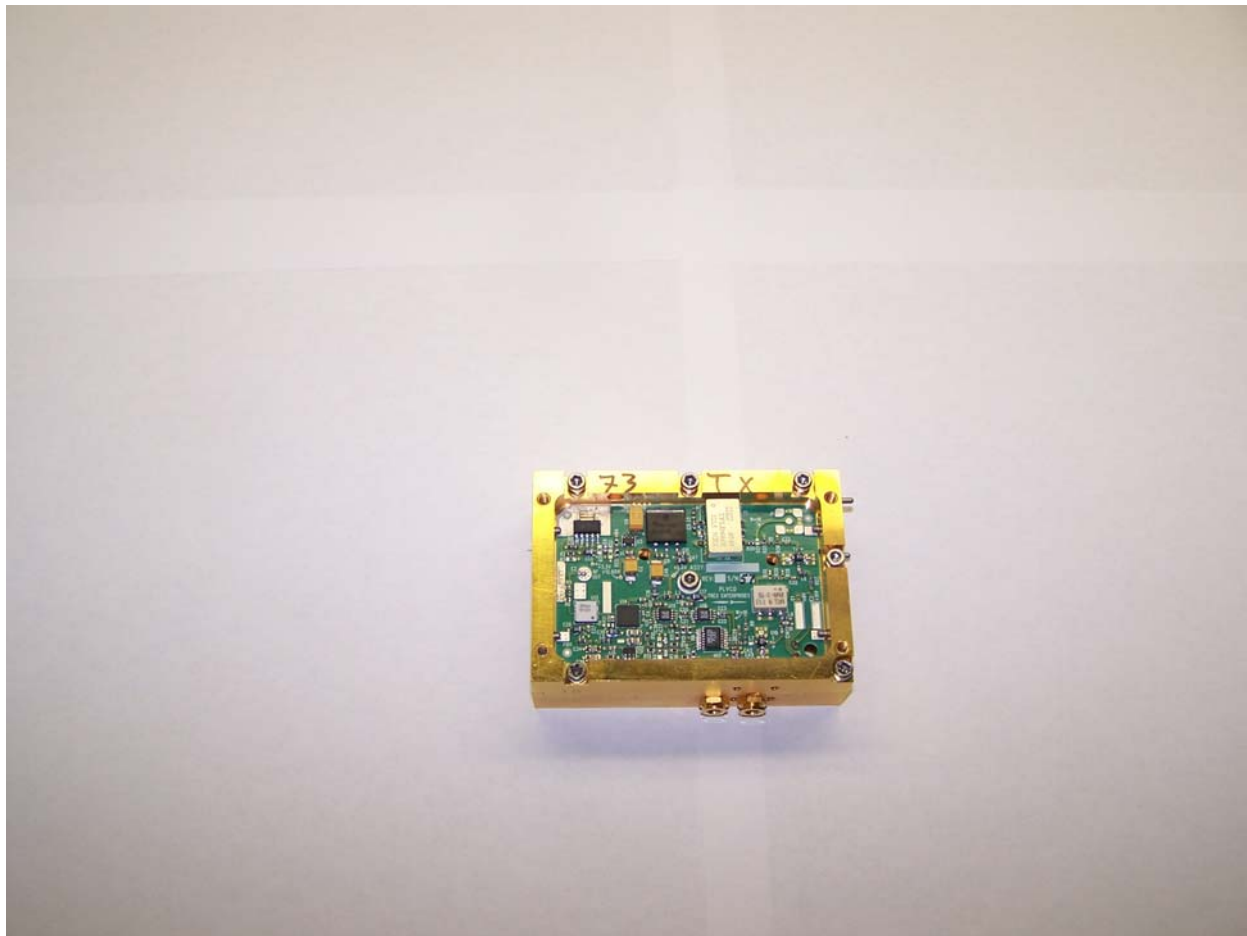


Photo of Radio A 73.5GHz Tx Module Top View

Note: Radio B 83.5GHz Tx Module is identical to the 73.5GHz Tx module. The different frequencies are achieved by programming the crystal oscillator differently.

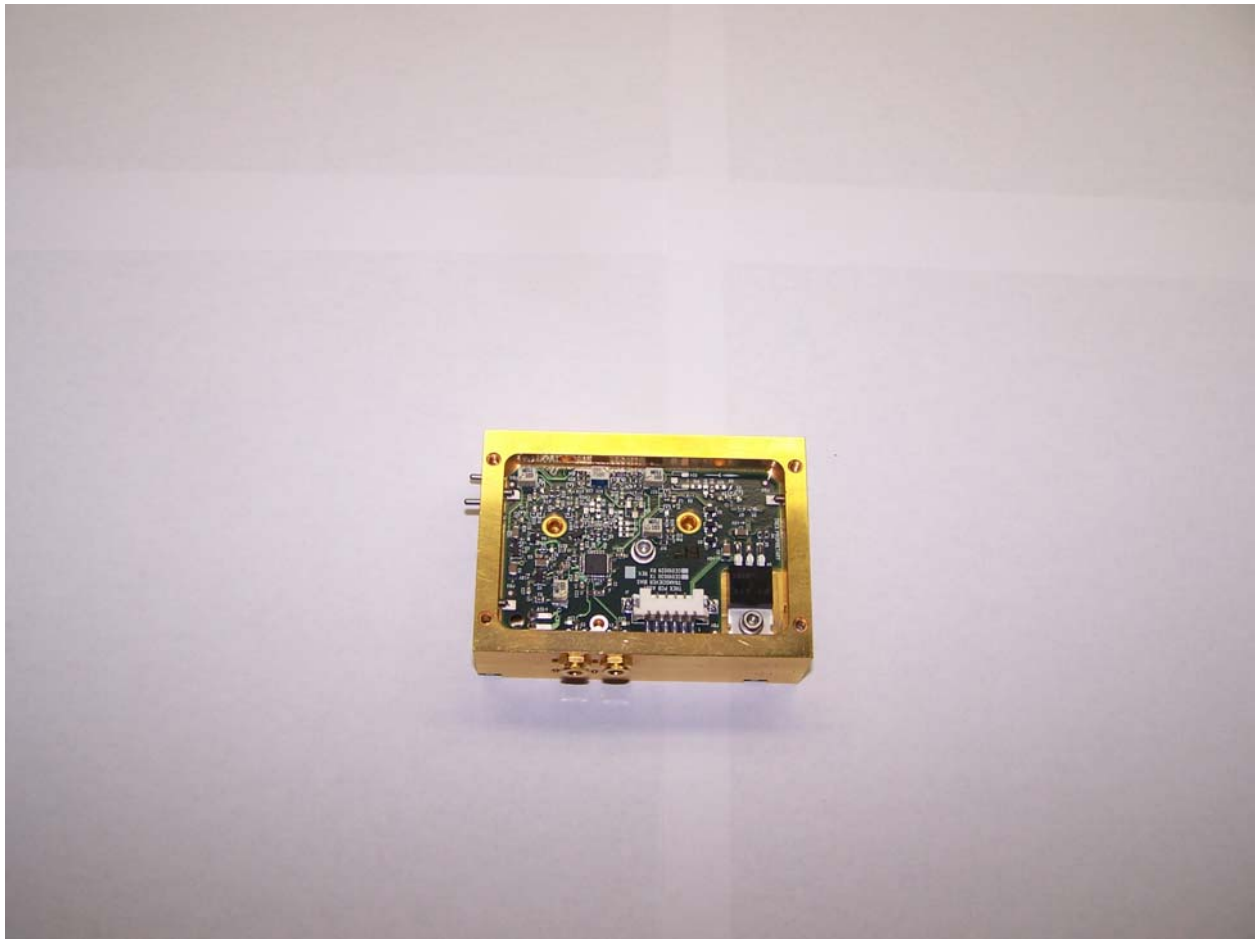


Photo of Radio A 73.5GHz Tx Module Bottom View

Note: Radio B 83.5GHz Tx Module is identical to the 73.5GHz Tx module. The different frequencies are achieved by programming the crystal oscillator differently.

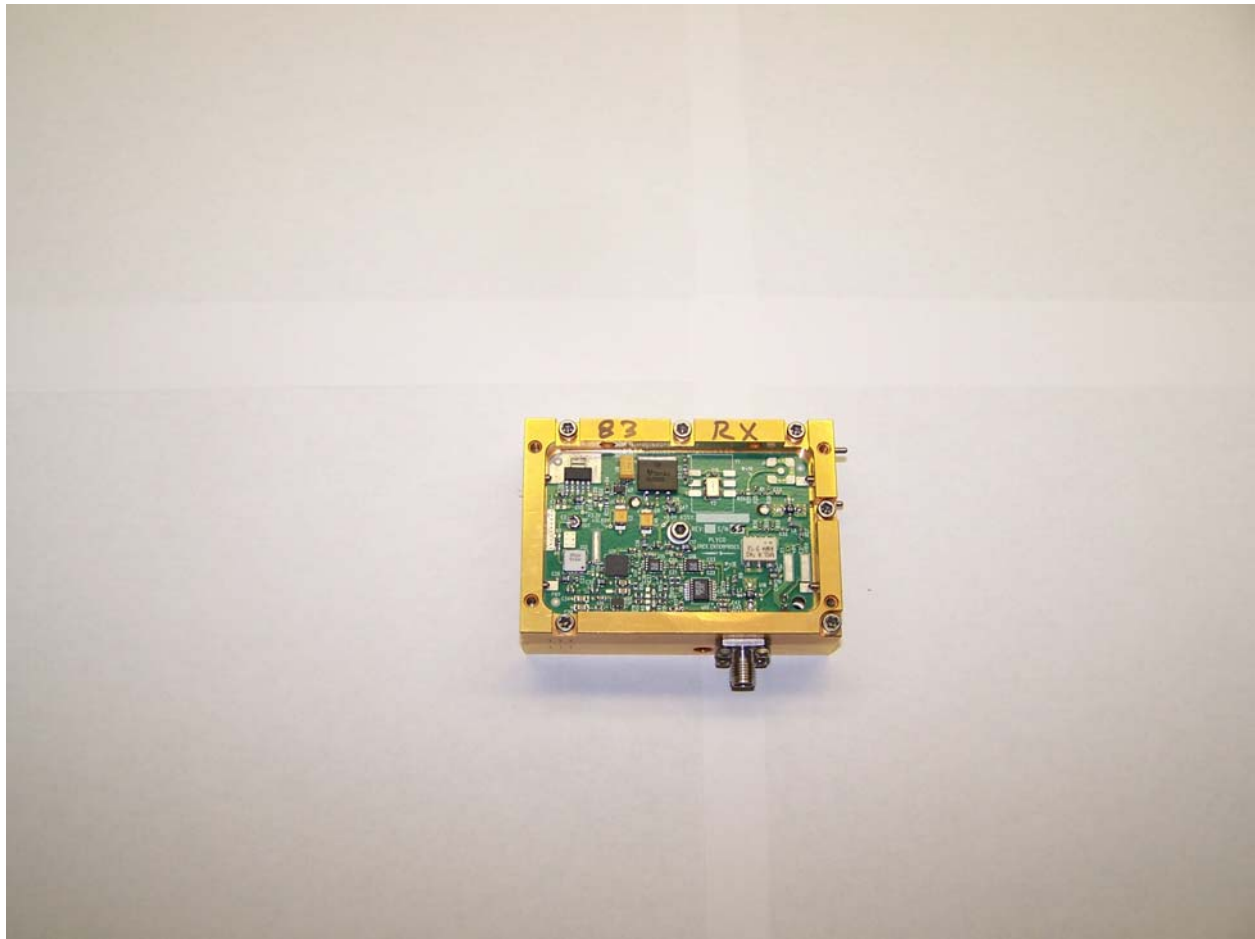


Photo of Radio A 83.5GHz Rx Module Top View

Note: Radio B 73.5GHz Rx Module is identical to the 83.5GHz Rx module in Radio A. The different frequencies are achieved by programming the crystal oscillator differently.

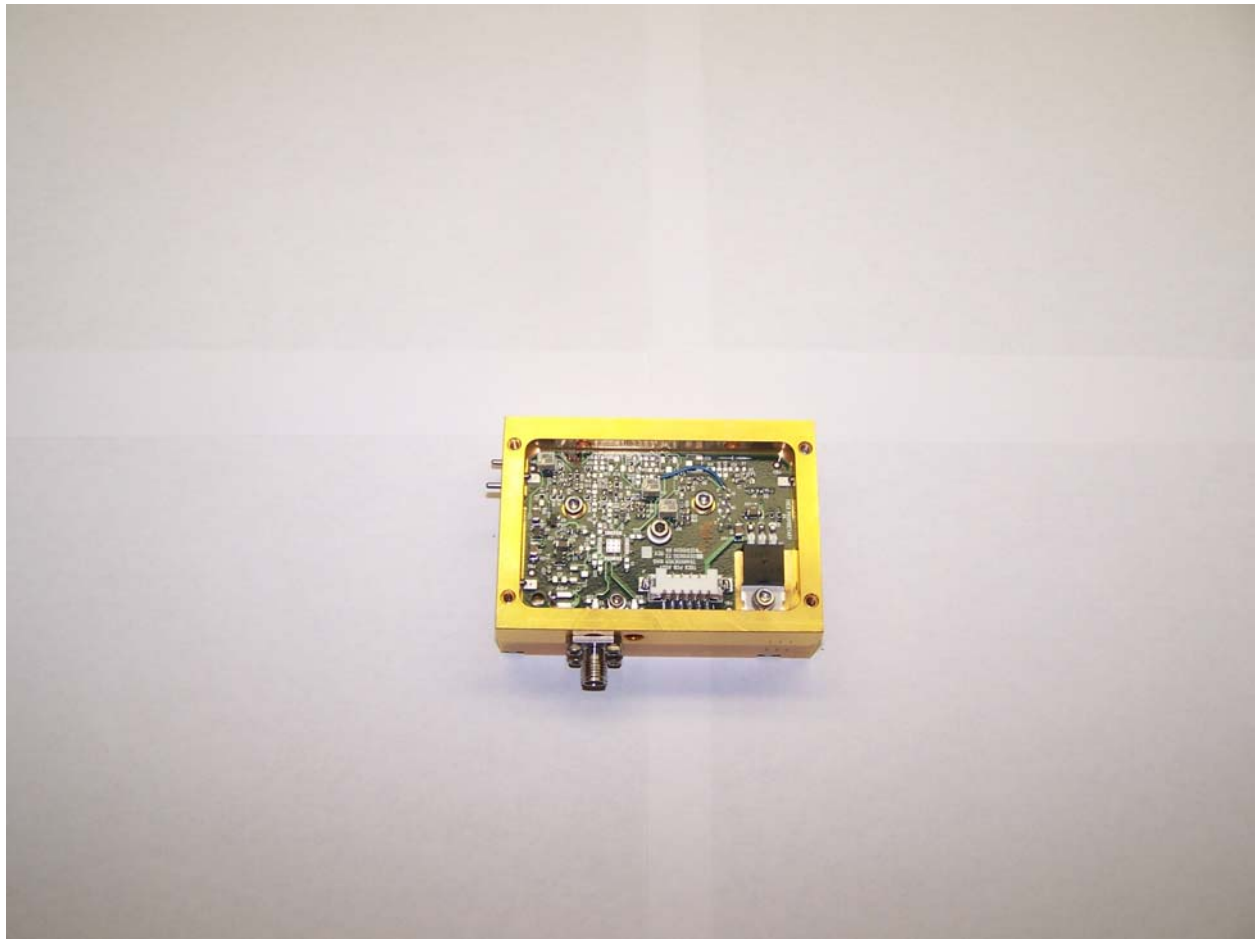


Photo of Radio A 83.5GHz Rx Module Bottom View

Note: Radio B 73.5GHz Rx Module is identical to the 83.5GHz Rx module in Radio A. The different frequencies are achieved by programming the crystal oscillator differently.



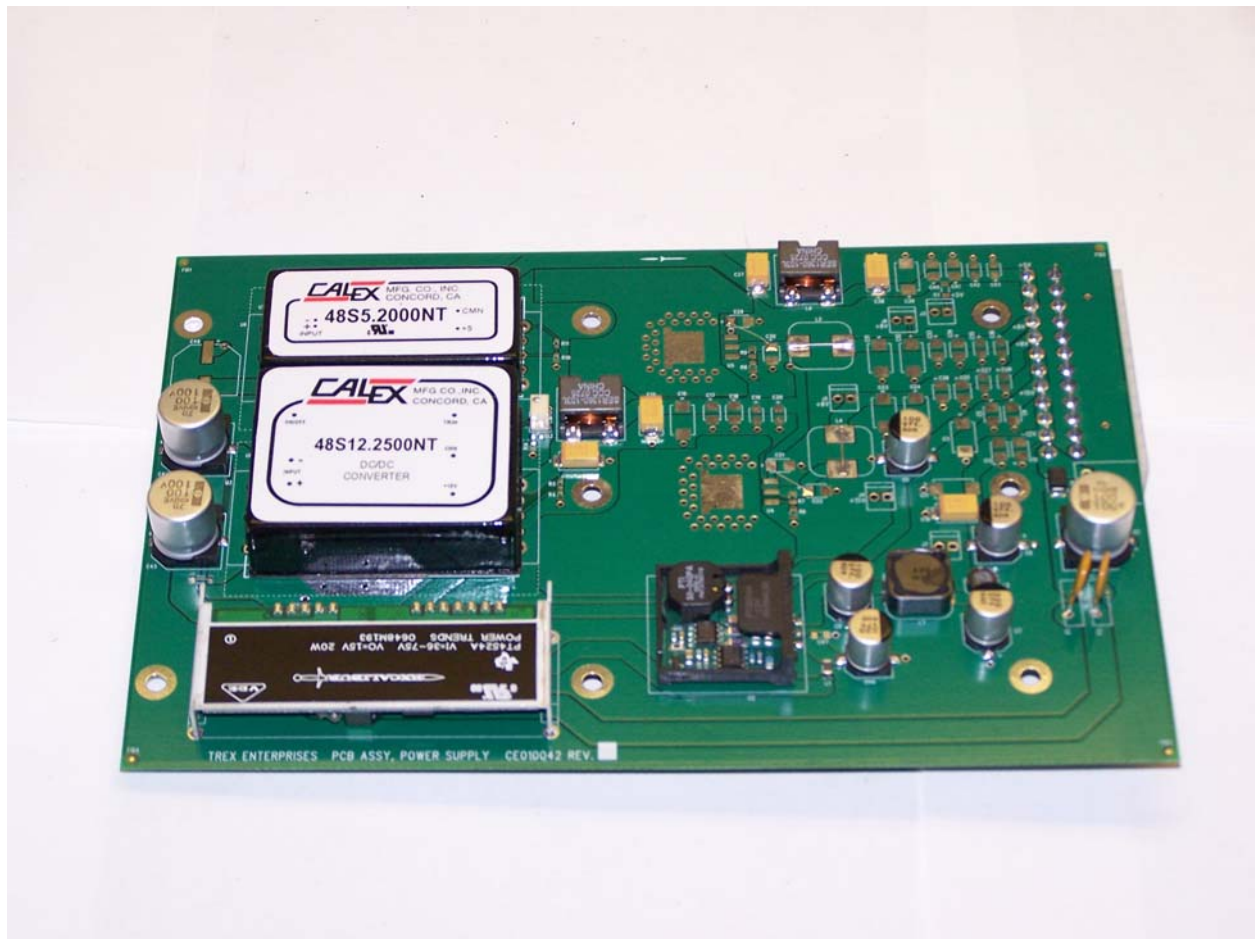


Photo of Power Supply board – Top view



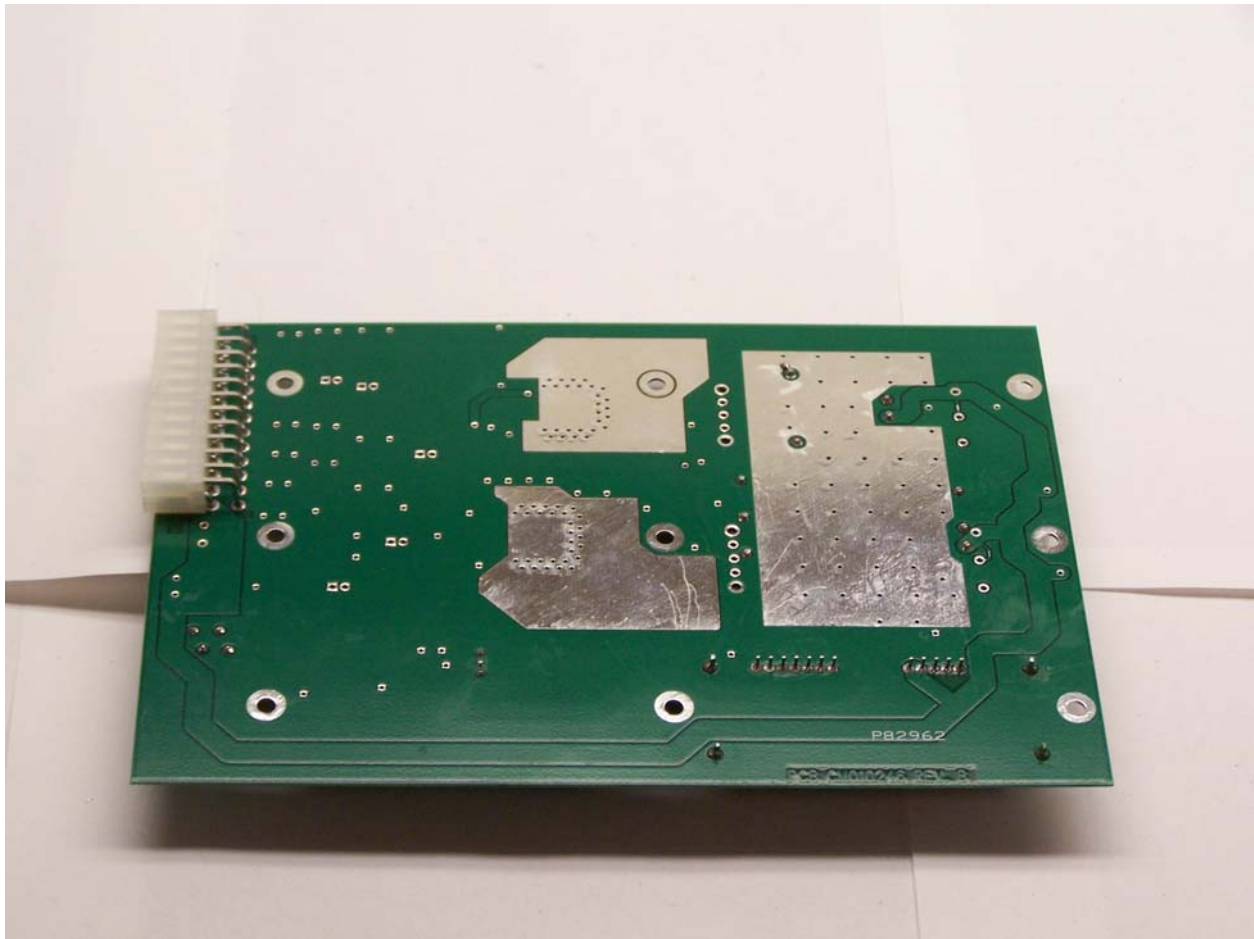


Photo of Power Supply board – Bottom view

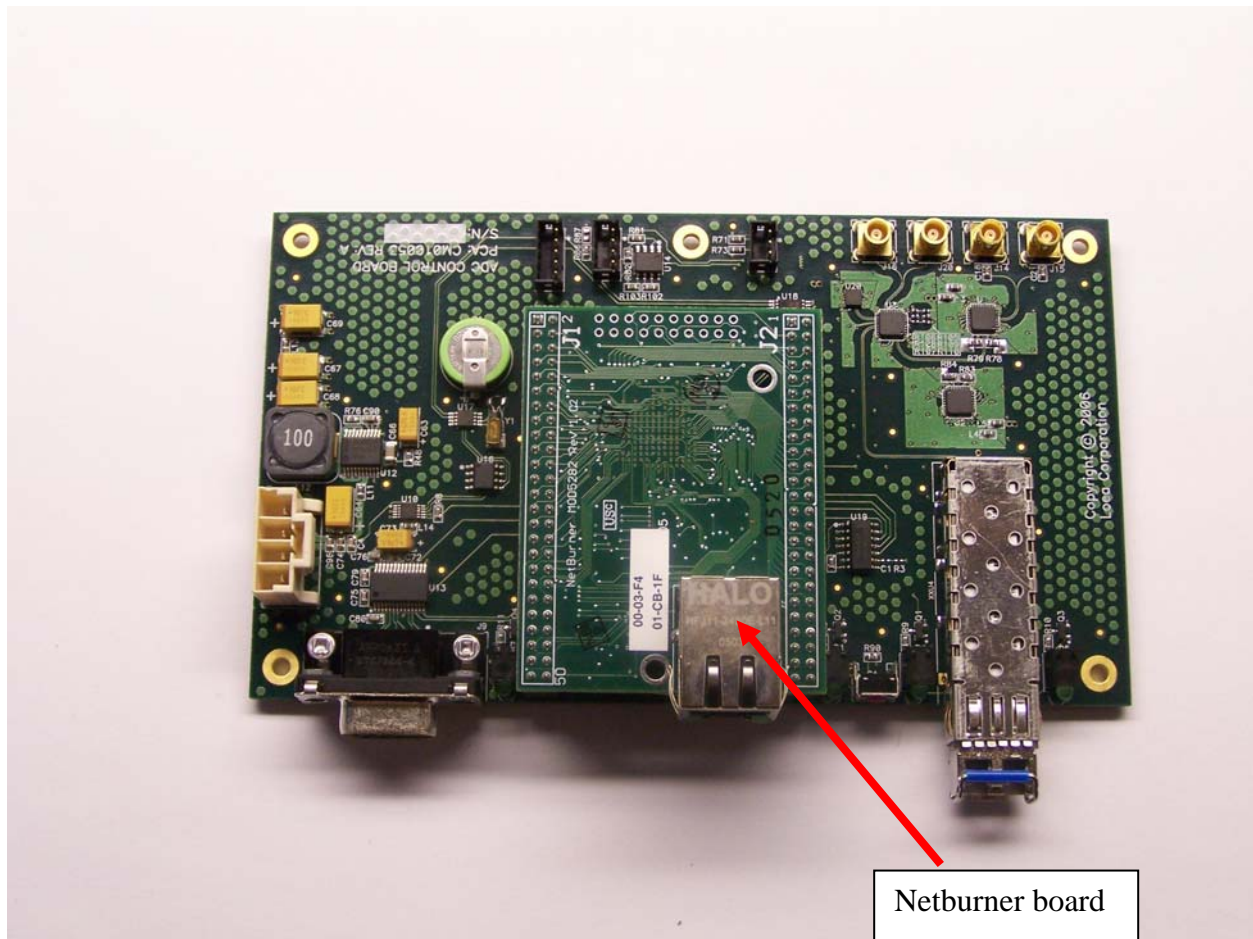


Photo of Control board – Top view

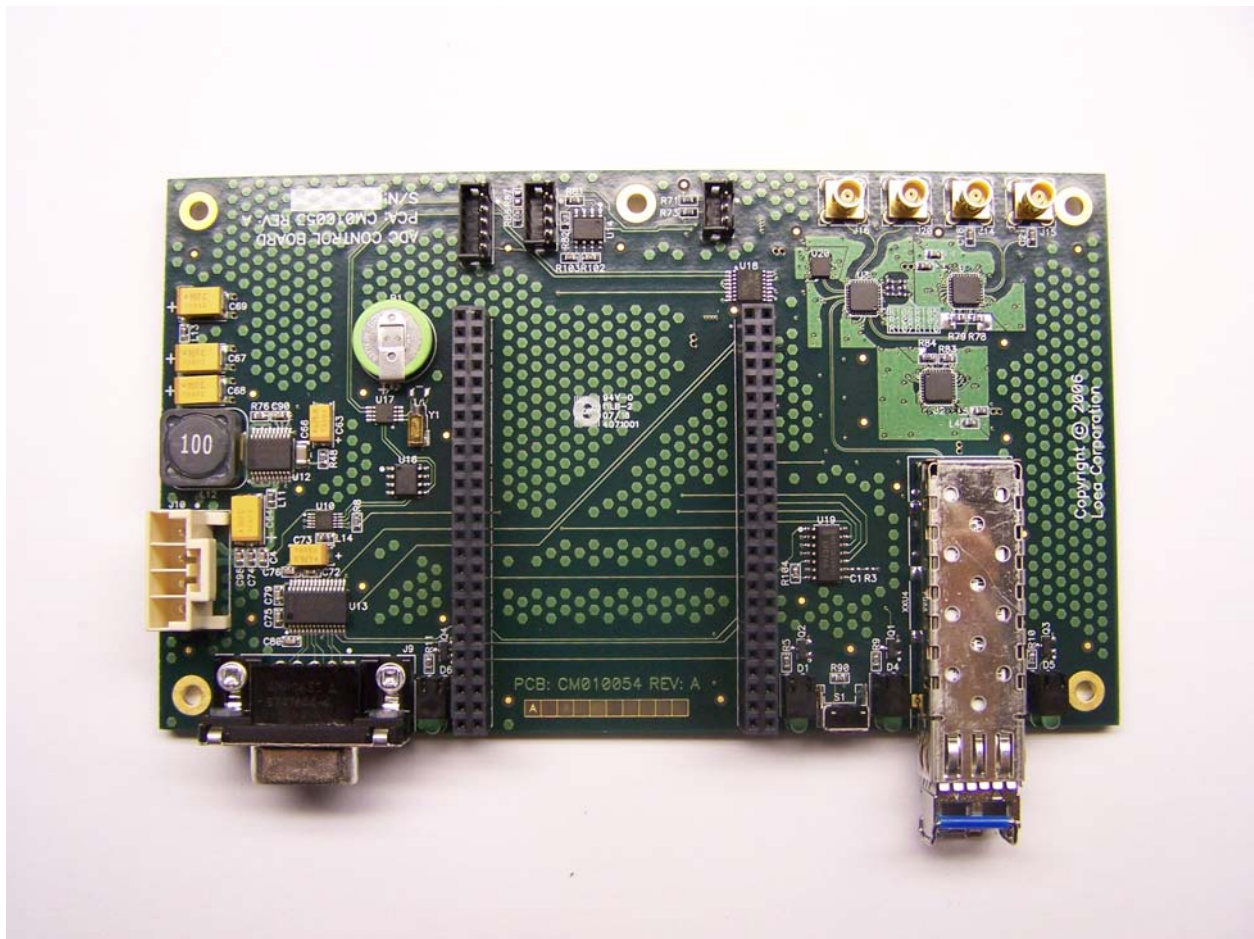


Photo of Control board – Top view with Netburner board removed

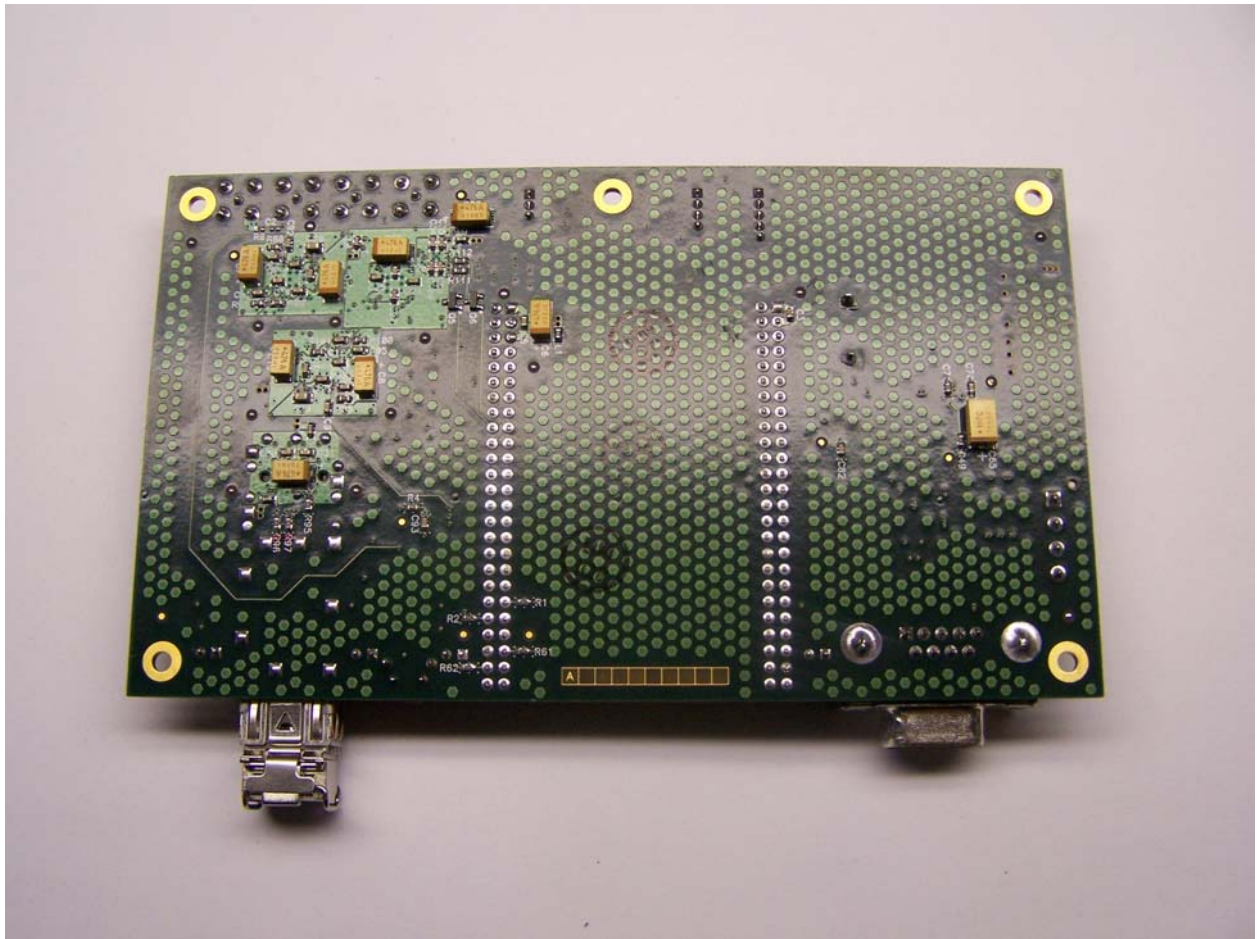


Photo of Control board – Bottom view



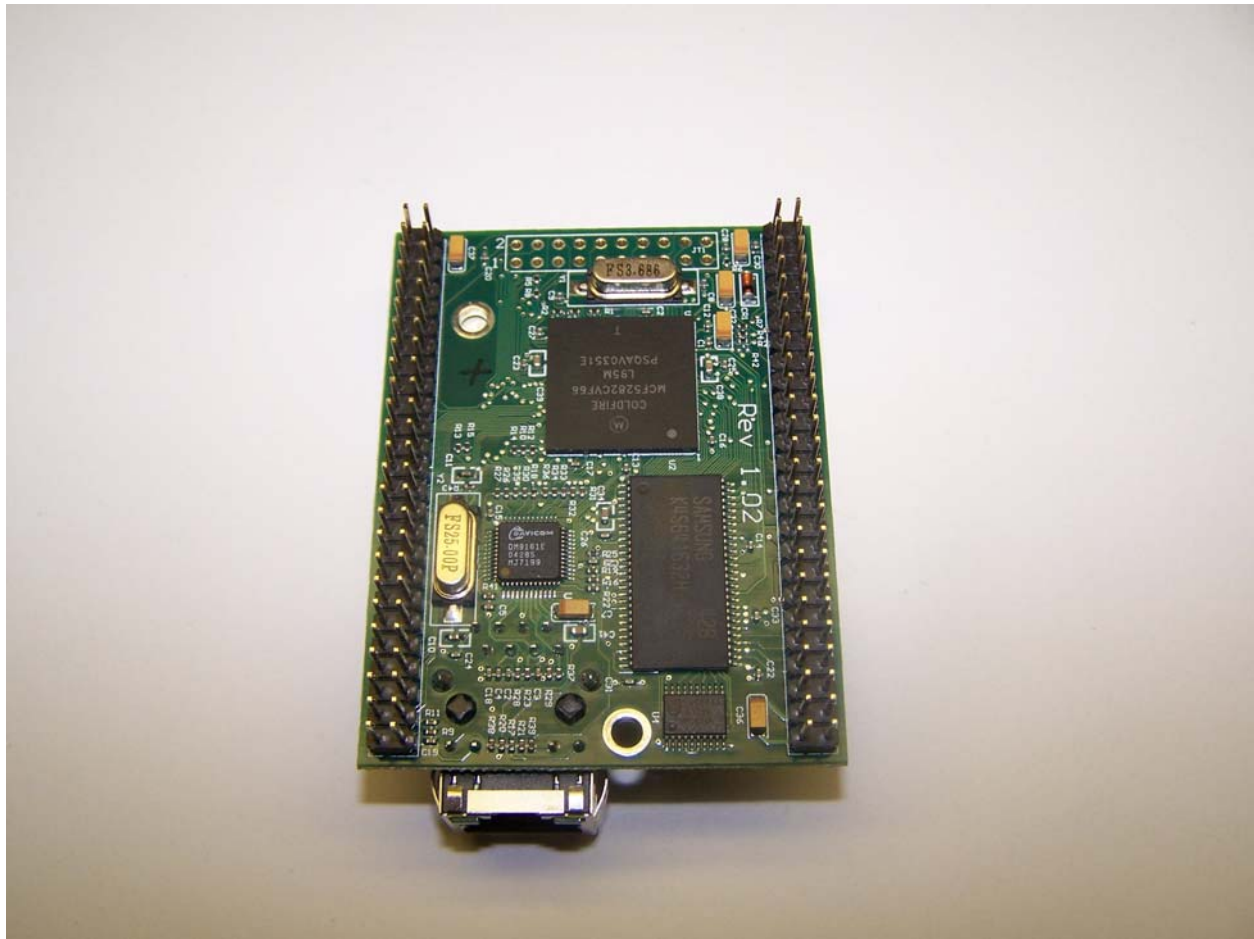


Photo of Netburner board – Bottom view

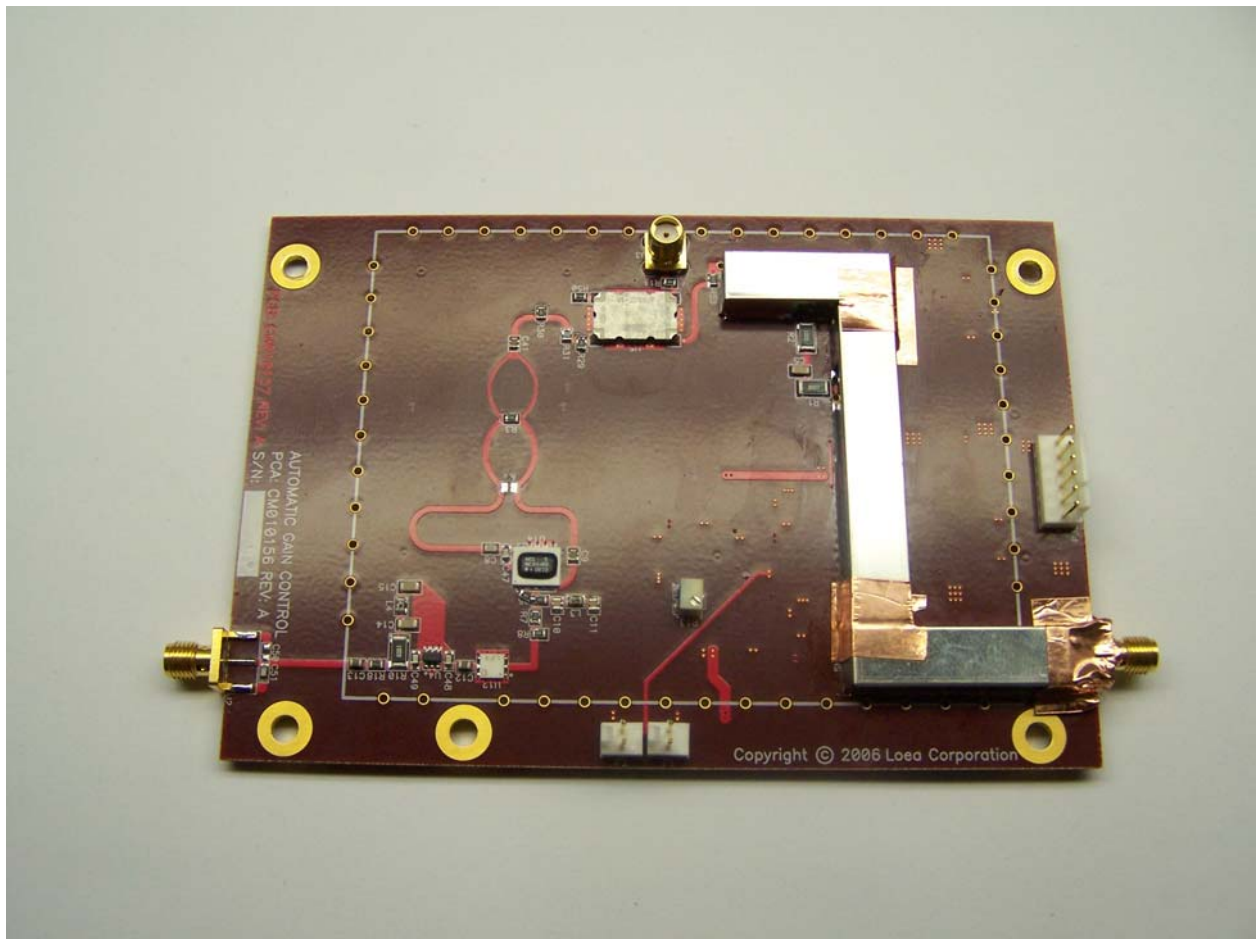


Photo of AGC/Det board – Top view



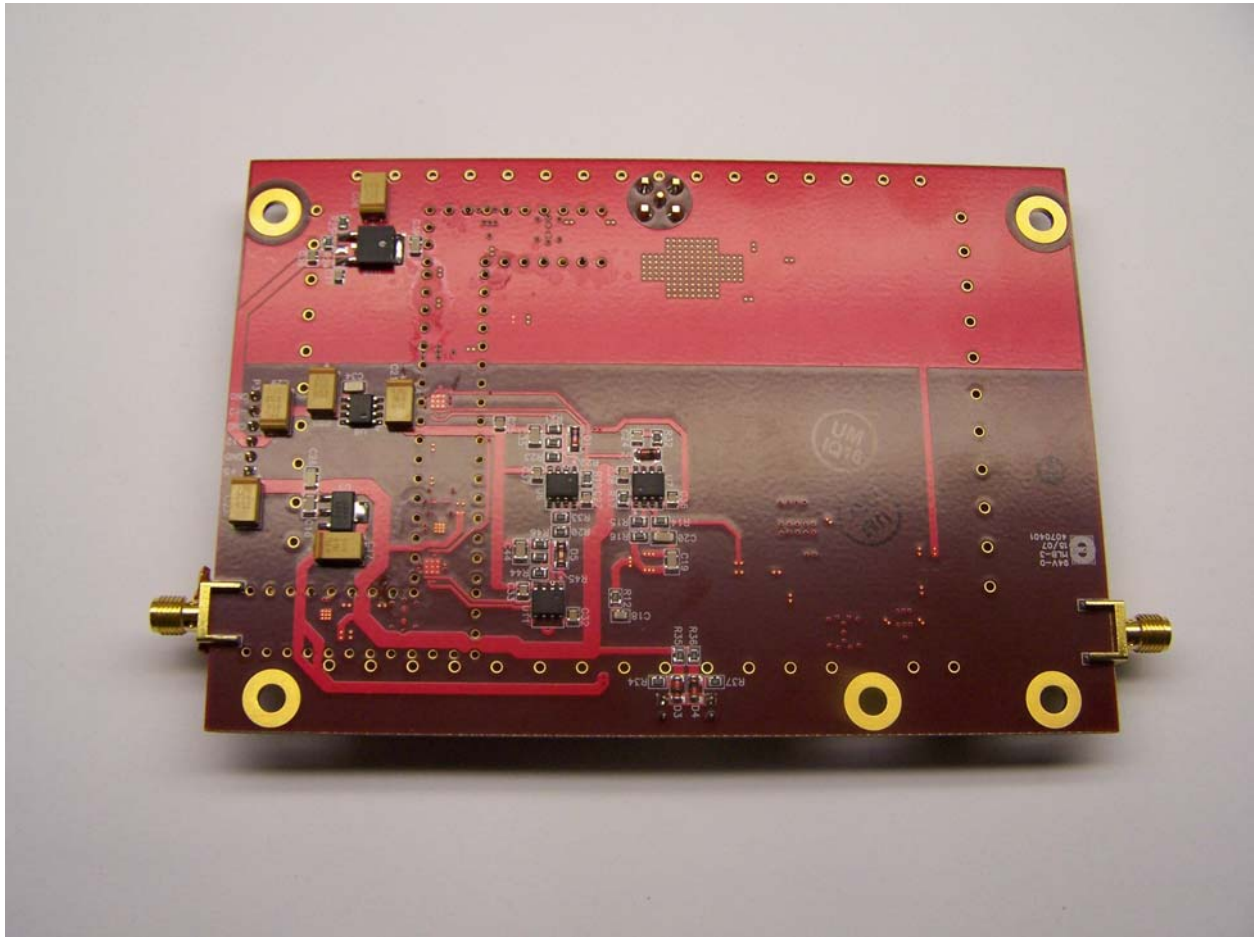


Photo of AGC/Det board – Bottom view