

F21 M888C BLUETOOTH MOUSE QUICK SETUP GUIDE

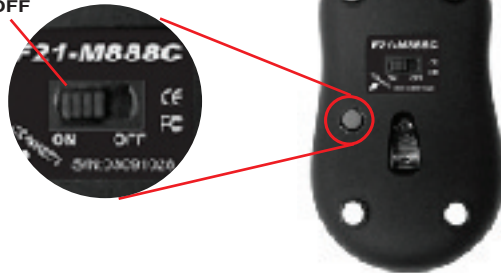
Appearance - Front



Appearance - Bottom

Note: for the max. Power saving, please turn the power off when the F21 M888C bluetooth mouse is idle.

POWER SWITCH
ON/OFF



Before Using

1. Install two batteries into the F21 M888C Bluetooth Mouse's battery slot.
2. Turn the power on.
3. Pair the F21 M888C Bluetooth Mouse with your computer.

Note: Please make sure that your Bluetooth software supports HID (Human Interface Device) profile before the pairing process.

Note: The pairing instruction herein is based on the WIDCOMM bluetooth software 1.4.2 Build 10. Please follow the instruction that comes with your Bluetooth software if you don't use WIDCOMM software.

Notice 1

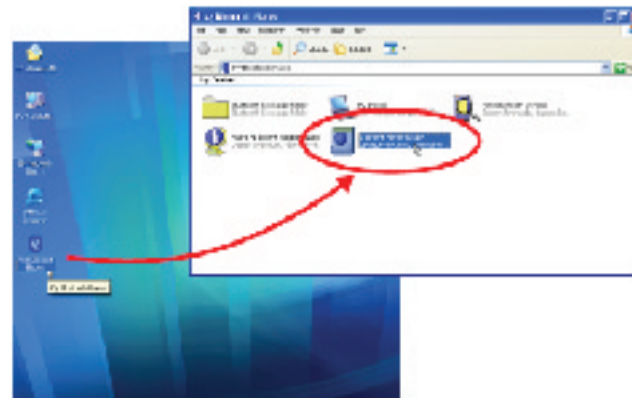
You are cautioned that changes or modifications not expressly approved by the part responsible for compliance could void the user's authority to operate the equipment.

Notice 2

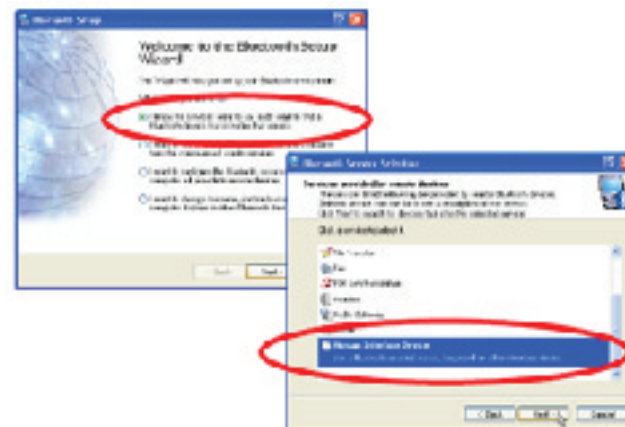
This equipment has been tested and found to comply with the limits for a Class B digital device, pursuant to part 15 of the FCC rules. These limits are designed to provide reasonable protection against harmful interference in a residential installation. This equipment generates, uses and can radiate radio frequency energy and, if not installed and used in accordance with the instructions, may cause harmful interference to radio communications.

Pairing Process:

1. Press and hold the pairing / preset button until the scrolling wheel brightens with blue color.
2. Double-click on My Bluetooth places icon form windows desktop.
3. Double -click on bluetooth setup wizard icon from My Bluetooth Setup Wizard icon form My Bluetooth places window.

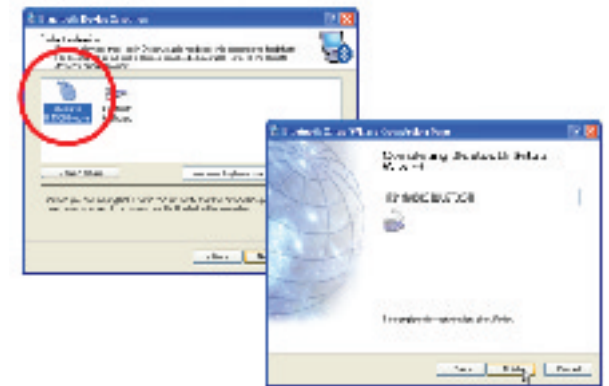


4. Select "I know the service I want to use add ..." and press Next to continue.
5. Select" Human Interface Device" and then press Next button to continue.



6. The Bluetooth Setup Wizard starts to search for Bluetooth HID device in the vicinity. The F21 M888C Bluetooth Mousse icon will be displayed in the window when it is found.

7. The Bluetooth Setup Wizard takes several seconds to configure related files to your system. Please press Finish button to complete the pairing process after the configuration.



Once the connection between F21 M888C Bluetooth Mouse and your computer is established, the connection will keep permanently. That means the connection will re-establish automatically when the Windows runs.



Clicker

Make your dreams alive

Notice: Please follow regional rules for Bluetooth use.