



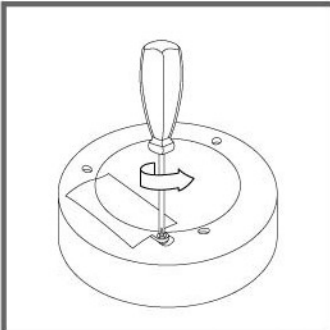
1:8  
Scale

# RC MUSCLE MACHINES®

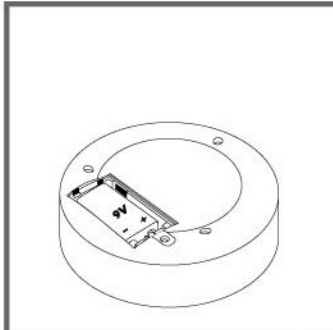
## Note to Adults

To ensure that the child's play is both safe and fun, please review all operating instructions and safety rules with your child. This is not a ride on toy. Do not sit or ride on the car whether it is in motion or not.

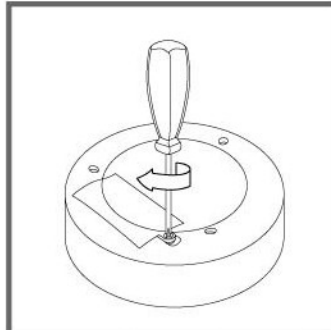
## Battery and Antenna Installation - Transmitter



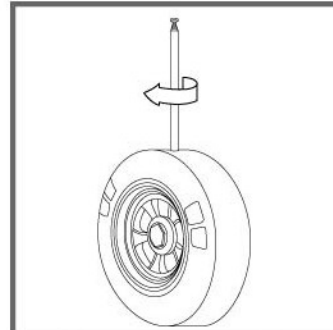
Remove battery door with a Philips head screwdriver (not included).



Install one 9V battery with polarity (+/-) as shown inside battery compartment.

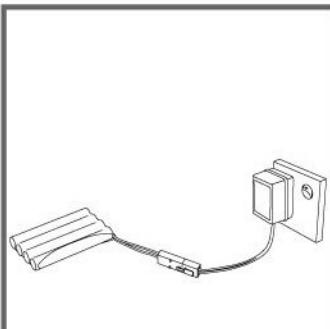


Replace battery door and tighten screw.

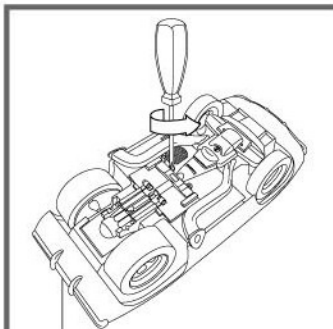


Tighten the antenna into the transmitter.

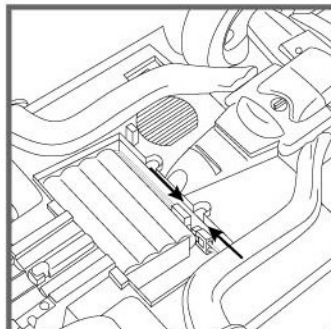
## Battery Pack Charging and Installation - Muscle Machines



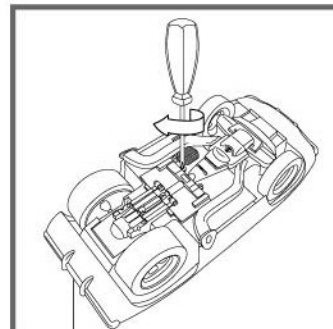
Attach the 9.6V Ni-Cd battery pack to the battery charger, then plug the battery charger into a standard wall outlet.



Remove battery door with a Philips head screwdriver (not included).



Attach the 9.6V battery pack to the plug inside battery compartment with polarity(+/-). Then place into battery compartment.



Tighten battery door with a Philips head screwdriver (not included).

## Rechargeable Ni-Cd Battery Pack Information

This product contains Nickel-Cadmium battery. Battery must be recycled or disposed of properly.

- New battery pack must be charged for 5 hours the first three times charged. After that, subsequent charges will require only 4 hours.
- DO NOT recharge battery pack if it shows leakage or corrosion.
- DO NOT disassemble the battery pack. The battery pack is a sealed rechargeable Nickel-Cadmium battery.
- DO NOT recharge battery pack until it is fully discharged.
- DO NOT overcharge battery pack.
- DO NOT cover the battery pack with any sort of material while charging.
- DO NOT charge non-rechargeable batteries.
- If battery pack and / or charger are wet, thoroughly dry before charging.
- After charging, the battery pack will be warm, this is normal for fully charged batteries.
- After use, the battery pack will be hot, wait until battery pack cools before recharging.

## Battery Charger Information

- Specification of battery charger:  
Input: 120V AC 60Hz 5.5W      Output: 12V DC 200mA
- The battery charger is not a toy.
- If the battery charger is damaged, DO NOT use it.



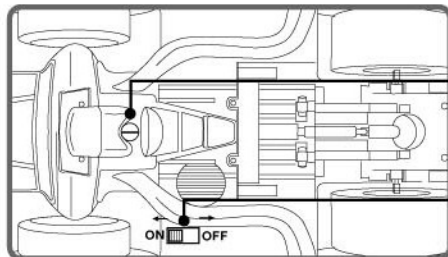
**CAUTION:** Only allow children at least 8 years old to use the battery charger. The battery charger is not a toy and should be used only under adult supervision.

## Battery Safety Information

Batteries may leak fluids that can cause damage to your toy. To avoid battery leakage:

- Insert batteries as indicated inside the battery compartment.
- Remove batteries during long periods of non-use. Always remove exhausted batteries from the toy.
- Do not dispose of batteries in a fire. The batteries may explode or leak.
- Never short-circuit the battery terminals.
- Do not charge non-rechargeable batteries.
- Remove rechargeable batteries from the toy before charging.
- If rechargeable batteries are used, they should be charged according to manufacturer's specifications and under adult supervision.

## Muscle Machines Operation

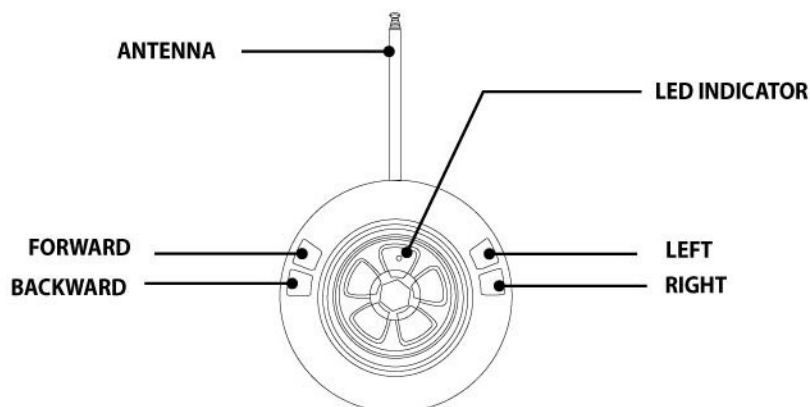


If the car does not run in a straight line, adjust the angle with this lever.



Please make sure the power switch is the ON position when you operate, and OFF position when not in use.

## Transmitter Operation



## Safety Tips

- **NEVER** operate your vehicle on the street, thru water, sand, snow, thick carpet, or in the rain. If your vehicle gets wet, discontinue use until completely dry.
- **DO NOT** pick up vehicle while in motion.
- **DO NOT** store either unit near a source of heat or in direct sunlight for extended period.
- **DO NOT** drive the vehicle on the table top or other elevated surfaces.
- Keep fingers, hair and loose clothing away from the wheels.
- Adult supervision is recommended when this vehicle is being operated.
- To avoid accidental operation, leave the power switch in the OFF position and remove all batteries when not in use.

## Quick Tips

- When your vehicle begins to lose performance, power or function, it may be time to replace the batteries.
- Radio interference may cause your vehicle to run poorly. In the event of interference, you may need to operate the vehicle in another location.
- Your vehicle's performance may vary depending on the driving surface.
- Point your transmitter antenna up, not downward toward your vehicle. If your vehicle gets too far away, it won't work properly.
- **Smart Circuitry**  
If your vehicle gets stalled or stuck during play, a special circuit will cut power to protect it and the vehicle will give out a warning sound. Release your transmitter and wait 20-30 minutes (reposition your vehicle if necessary), and you are ready to go again.

If you have any questions or comments, call our hotline at 1-800-301-9853 or E-mail to us at [customerservice@musclerachines.com](mailto:customerservice@musclerachines.com)



© 2004 Funline Merchandise Co., Inc.  
City of Industry, CA 91745  
All Rights Reserved  
MADE IN CHINA



Action is a registered trademark of  
Action Performance Companies, Inc.  
Funline Merchandise Co., Inc. is a  
subsidiary of Action Performance  
Companies, Inc.

Modifications are not authorized by the manufacturer may void users authority to operate this device.

NOTE: This equipment has been tested and found to comply with the limits for a Class B digital device, pursuant to Part 15 of the FCC Rules. These limits are designed to provide reasonable protection against harmful interference in a residential installation. This equipment generates, uses and can radiate radio frequency energy and, if not install and used in accordance with the instructions, may cause harmful interference to radio communications. However, there is no guarantee that interference will not occur in a particular installation. If this equipment does cause harmful interference to radio or television reception, which can be determined by turning the equipment off and on, the user is encouraged to try to correct the interference by one or more of the following measures:

- Reorient or relocate the receiving antenna.
- Increase the separation between the equipment and receiver.
- Connect the equipment into an outlet on a circuit different from that to which the receiver is connected.
- Consult the dealer or an experienced radio/TV technician for help.

For a Class B digital device or peripheral, the instructions furnished the user shall include The following or similar statement, placed in a prominent location in the text of the manual:

NOTE: This equipment has been tested and found to comply with the limits for a Class B digital device, pursuant to Part 15 of the FCC Rules. These limits are designed to provide reasonable protection against harmful interference in a residential installation. This equipment generates, uses and can radiate radio frequency energy and, if not installed and used in accordance with the instructions, may cause harmful interference to radio communications. However, there is no guarantee that interference will not occur in a particular installation. If this equipment does cause harmful interference to radio or television reception, which can be determined by turning the equipment off and on, the user is encouraged to try to correct the interference by one or more of the following measures:

- Reorient or relocate the receiving antenna.
- Increase the separation between the equipment and receiver.
- Connect the equipment into an outlet on a circuit different from that to which the receiver is connected.
- Consult the dealer or an experienced radio/TV technician for help.

**FCCID: RZH730080501T2**  
**MADE IN CHINA**

This device complies with Part 15 of the FCC Rules.  
Operation is subject to the following two conditions:  
(1) this device may not cause harmful interference, and  
(2) this device must accept any interference received, including interference that may cause undesired operation.

**FCCID: RZH730080501T4**  
**MADE IN CHINA**

This device complies with Part 15 of the FCC Rules.  
Operation is subject to the following two conditions:  
(1) this device may not cause harmful interference, and  
(2) this device must accept any interference received, including interference that may cause undesired operation.



Product: 1/8 R/C Vehicle  
Model: Item #73008