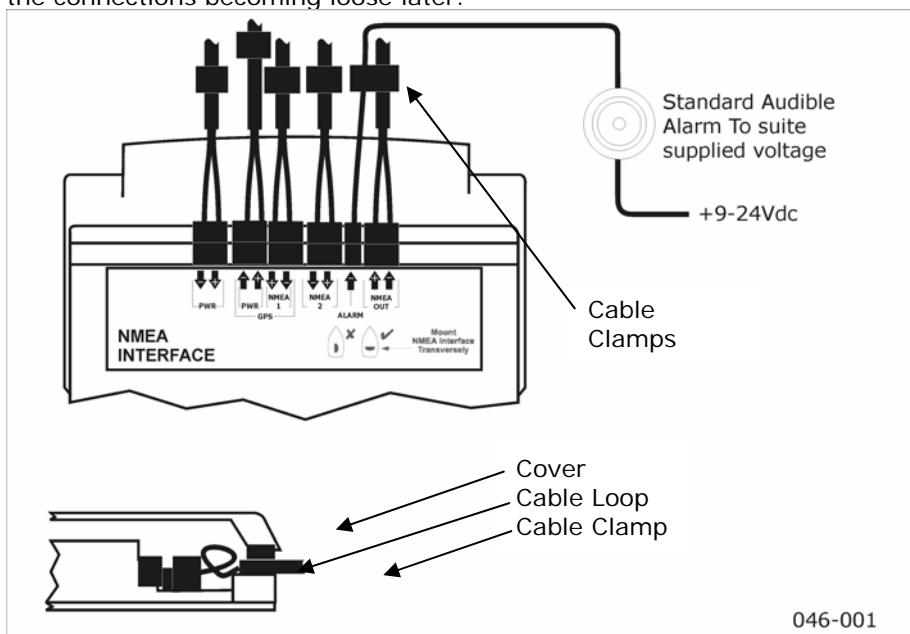


## Installation Method

For optimum performance and long term operation it is advisable to connect to the vessels 12/24Vdc supply rather than relying on small power cells. Connect the cable ends from the transducers and power supply to the supplied connectors using the supplied screwdriver taking care to ensure that all core colours are positioned correctly. It is advisable to sheath the screens to prevent short circuit problems once the cover is in place.

Insert the connectors into the appropriate sockets on the Hull Transmitter and loop the single cores to allow the outer cable sheath to be secured in the clamp when the cover is fitted.

Secure the cables close to the Hull Transmitter to reduce the possibility of the connections becoming loose later.



## NMEA Sentences (0183 v2.30)

Received Sentences: DPT, HDG, MWV, RMB, RMC, VHW

Transmitted Sentences: DPT, GLL, HDG, MTW, MWV, RMC, VHW, VLW

NOTE: Only information available will be transmitted.

## NMEA Interface



Tacktick Limited  
22 North Street, Emsworth,  
Hampshire, PO10 7DG, England  
Tel. +44 (0)1243 379331  
Fax. +44 (0) 1243 379199  
www.tacktick.com

## Tools Required

1. 2mm or 5mm Drill Bit
2. Power Drill
3. Cross Head Screwdriver

## Parts List

1. Mounting Template
2. Mounting Bracket
3. Mounting Screws (3 off)
4. Mounting Bolts (3 off)
5. M4 Studs & Thumbnuts (3 off)
6. Double Sided Tape

## Precautions

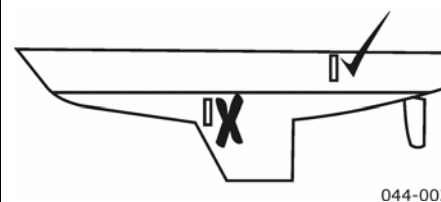
The NMEA Interface should be mounted in a dry area of the boat to protect the cables and connectors from corrosion.

Cables should be supported close to the Hull Transmitter box to prevent possible strain on the internal connectors.

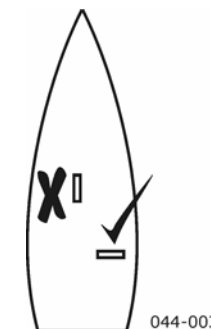
All cables should be supported by clamps and ties close to the unit.

## Positioning Advise

The NMEA Interface should be mounted such that the cables from the transducers can be routed to it easily through the boat. Mounting the Hull Transmitter close to the transducers will allow easy cable routing. Avoid mounting on metallic surfaces or where there are metallic objects between the Interface Box and other Micronet instruments.



*Avoid bilge areas if possible to protect the equipment and connections*



*For optimum signal avoid mounting the transmitter on a longitudinal surface*

## Bracket Mounting

This method allows for the easy removal of a NMEA Interface as and when required for either security reasons or to prevent damage whilst not in use.

1. Using the three supplied M4 bolts attach the back plate to the rear of the NMEA Interface. (Fig. 1)
2. Drill three 3mm holes marked "BRACKET" on the Template and using the supplied screws attach the clip bracket to the mounting surface. (Fig. 2)
3. Place the NMEA Interface flat against the bracket slightly higher than the final position and slide gently down into position. There will be a small click as the bracket secures the Interface in position. (Fig. 3)
4. Connect and secure the cables leaving a loop of single core cable inside the casing before fitting the cover such that the outer sheath is secured beneath the rubber clamp. Once the Interface is secured in position it is advisable to clamp the cables to the mounting surface close to the Interface.
5. To release the NMEA Interface press lightly on the bracket tab and slide the Transmitter up until it can be pulled away from the surface. (Fig. 4)

**Note:** Take care to disconnect cables carefully before removing the unit and ensure that the cables and connectors left behind are protected from both water and physical damage.

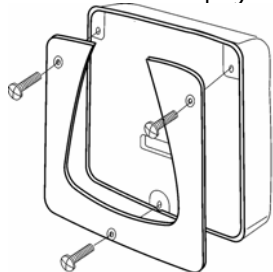


Fig. 1

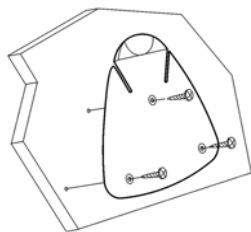


Fig. 2

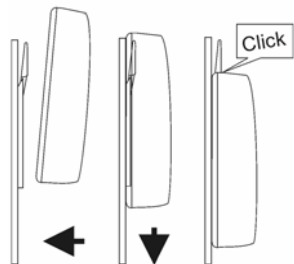


Fig. 3

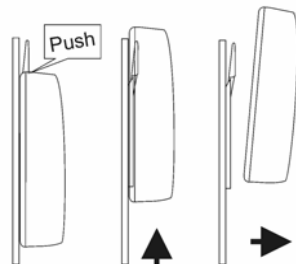


Fig. 4

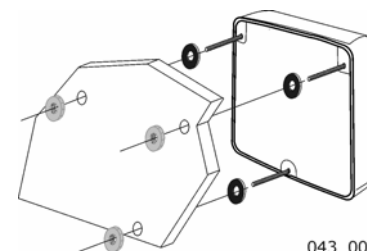
043-004

## Surface Mounting

### With Rear Access

Position the supplied Template carefully before starting.

1. Drill three 5mm holes marked "B" on the Template.
2. Screw the four M4 brass studs into the rear of the Interface.
3. Place the Interface in position pushing the three studs through the newly drilled holes.
4. Using the 3 supplied Thumb Nuts secure the Interface to the surface making sure it is level before fully tightening.
5. Connect and secure the cables leaving a loop of single core cable inside the casing before fitting the cover such that the outer sheath is secured beneath the rubber clamp. Once the Interface is secured in position it is advisable to clamp the cables to the mounting surface close to the Interface.

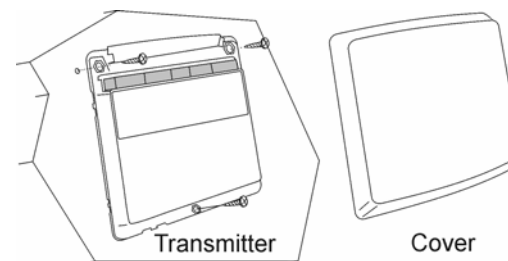


043\_005

### Without Rear Access

Position the supplied Template carefully before starting.

1. Drill three 2mm holes marked "SURFACE" on the Template
2. Remove the cover of the Interface from the main body.
4. A the Interface to the mounting surface using the three self tapping screws provided. Take care not to over tighten the screws as this may cause the moulding to crack.
5. Connect and secure the cables as shown overleaf.
6. Carefully fit the cover securing the cables with the clamp bar.



043\_006