



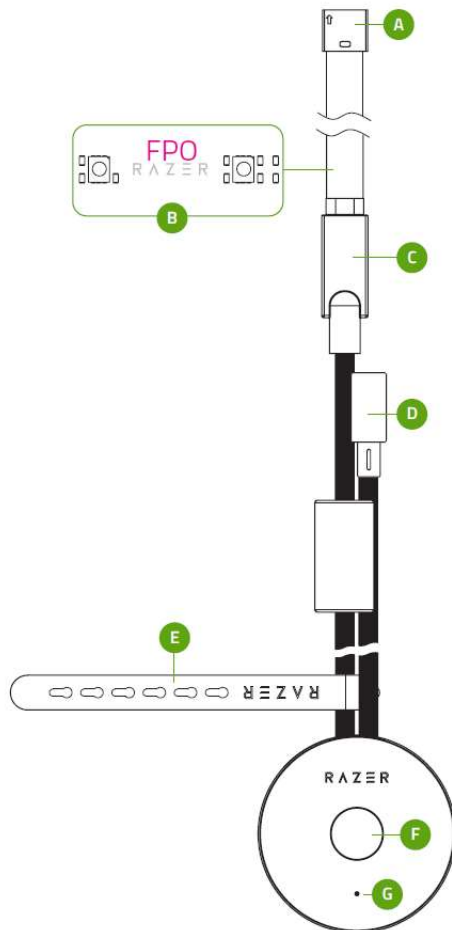
RAZER LIGHTING MODULE
MODEL NO: RZ43-042401

IMPORTANT PRODUCT INFORMATION GUIDE

WHAT'S INSIDE / WHAT'S NEEDED

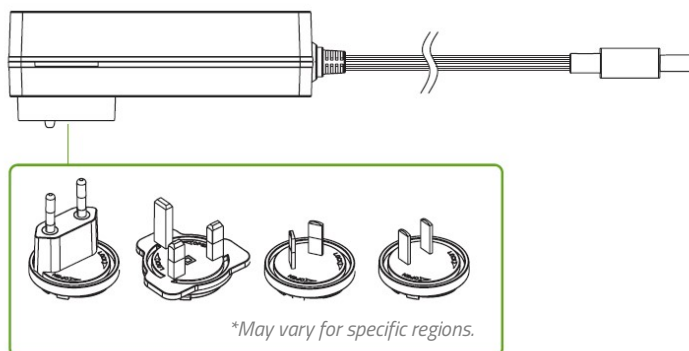
WHAT'S INSIDE

- Razer RZ43-042401



- A. Extender port
- B. Light strip cutting areas
- C. 2 m light strip
- D. Power port
- E. Cable tie
- F. Multi-function button
- G. Status indicator

- Power adapter with interchangeable plugs*



- Important Product Information Guide

WHAT'S NEEDED

PRODUCT REQUIREMENTS

- 2.4 GHz WiFi network (WPA / WPA2 encryption)
- WiFi-enabled PC / Laptop (Windows® 10 64-bit or higher) or iOS / Android device**

RAZER SMART HOME APP REQUIREMENTS

- iOS 13 / Android 9 Pie (or higher) device with Bluetooth connectivity**
- Internet connection for app installation

RAZER SYNAPSE REQUIREMENTS

- Windows® 10 64-bit (or higher)
- Internet connection for software installation

***Bluetooth connectivity required for initial setup only.*

LET'S GET YOU COVERED

You've got a great device in your hands, complete with a 1-year limited warranty coverage. Now maximize its potential and score exclusive Razer benefits by registering at razerid.razer.com

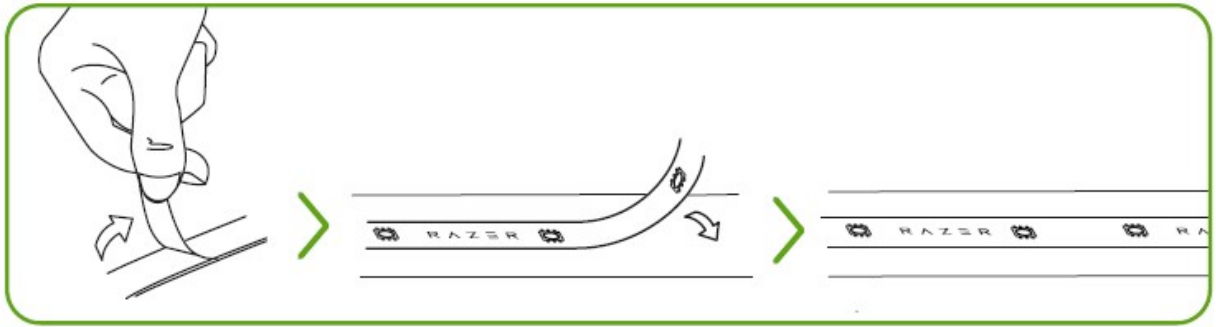


Got a question? Ask the Razer Support Team at support.razer.com

GETTING STARTED

SETTING IT UP

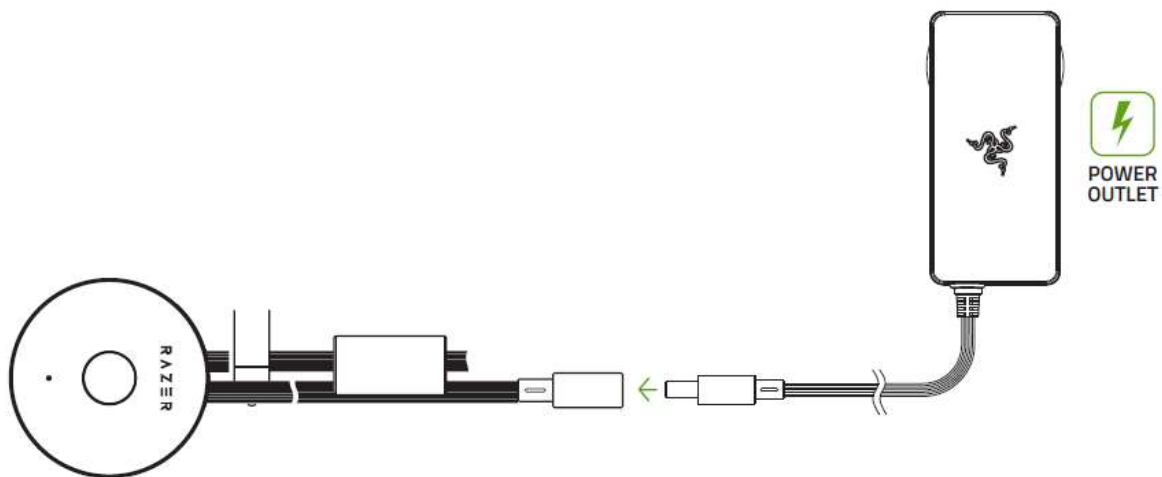
1. Use the adhesive layer on the light strip to fasten it on a clean, dry, and flat surface.



(OPTIONAL) You can shorten the light strip by trimming on any of its designated cutting areas.

WARNING: Ensure the smart light strip is OFF before cutting the light strip to avoid electric shocks and only cut on its designated cutting areas. Once trimmed, the smart light strip's warranty will be void, and you will no longer be able to lengthen your setup.

2. With the appropriate AC plug for your region attached to the power adapter, connect it to the smart light strip's power port and plug it into a power outlet.

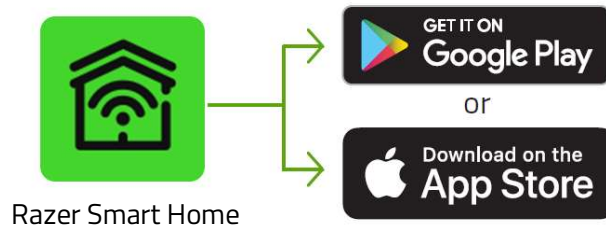


3. Strap the cables as needed using the cable tie to organize your setup.

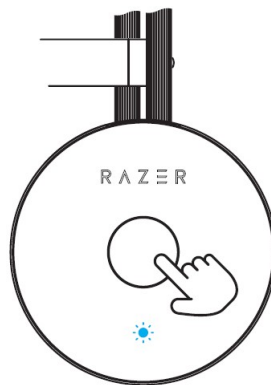
CUSTOMIZING THE LIGHTING

A. VIA MOBILE DEVICE USING THE RAZER SMART HOME APP (REQUIRED)

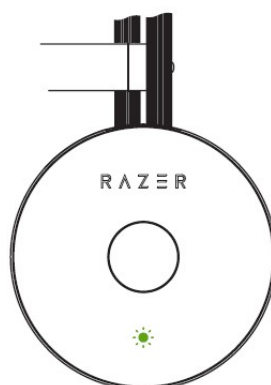
1. Download the Razer Smart Home app on your mobile device.



2. Press the multi-function button to power on the smart light strip. The status indicator will blink in blue to show that the smart light strip is in pairing mode.



3. Launch the app and follow the onscreen instructions. The status indicator will turn solid green to show that the smart light strip is connected to the app.



When prompted to select a WiFi network, select the same network used by your mobile device. Your mobile device must be connected to the same network whenever customizing the smart light strip

You can now customize the Razer RZ43-042401 using the Razer Smart Home app.

B. VIA PC / LAPTOP USING THE RAZER SYNAPSE APP

i Before proceeding, make sure you've already set up the smart light strip on your network from the Razer Smart Home app, and your PC is connected to the same network as the smart light strip.

1. Go to razer.com/synapse to download and launch Razer Synapse. For existing users, make sure to update Razer Synapse to its latest version.

! Registering for a Razer ID account is recommended but optional. You may continue as a guest; however, you won't be able to store any of your settings on the cloud.

2. Press the multi-function button to power on the smart light strip. The status indicator will show green to indicate that the smart light strip is connected to your network.

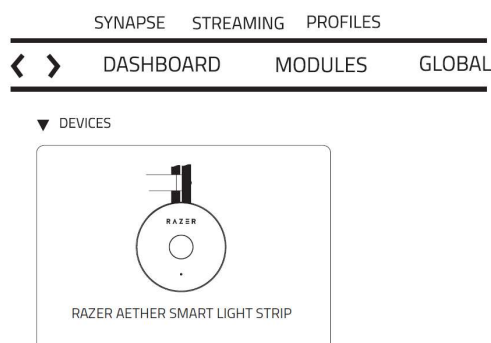


3. On Razer Synapse, click on **Add Smart Home Device**, and follow the onscreen instructions.



ADD SMART HOME DEVICE

4. Update when prompted, and wait for Razer Synapse to set up the smart light strip. The Razer Synapse Dashboard will show the Razer RZ43-042401 on the Devices list.



You can now customize the Razer RZ43-042401 using Razer Synapse.

REACTIVATING PAIRING MODE

Pairing mode is required when setting up the smart light strip from the Razer Smart Home app. While unpaired, the smart light strip will always enter pairing mode when you power it on. If the smart light strip is left unpaired for 5 minutes, pairing mode will deactivate and its status indicator will turn yellow. To reactivate pairing mode, power off and on the smart light strip.

USING THE SMART LIGHT STRIP

POWER ON/OFF

Press the multi-function button to power on or power off the smart light strip.



CHANGING THE LIGHTING EFFECT

While powered on, press and hold the multi-function button to cycle through colors and release to set the current color as the active color.

i *This function is only available when the Razer Smart Home app controls the smart light strip.*

PAIRING WITH A NEW DEVICE

Once connected, a reset is required to connect the smart light strip to a new device.

1. Switch off the power supply of the smart light strip.
2. While holding the multi-function button, switch on the power supply and continue holding the multi-function button for four (4) more seconds.

The light strip will briefly cycle through red, green, blue before displaying white when the reset is successful. The status indicator will also blink in blue to show that the smart light strip is in pairing mode.

3. Use the Razer Smart Home app to connect the Razer RZ43-042401 to a new mobile device.

SAFETY AND MAINTENANCE

SAFETY GUIDELINES

In order to achieve maximum safety while using the Razer RZ43-042401, we suggest that you adopt the following guidelines:

- Should you have trouble operating the device properly and troubleshooting does not work, unplug the device and contact the Razer hotline or go to support.razer.com for support. Don't attempt to service or fix the device yourself at any time.
- Don't take apart the device and attempt to operate it under abnormal current loads. Doing so may void your warranty.
- Once you cut the light strip, the device's warranty will be void, and you can no longer extend your setup.
- Only use accessories provided with the device and only purchase accessories made and/or approved by Razer.
- Only use the device indoors.
- Power off the device before relocating, modifying, and/or connecting/disconnecting any component.
- Always handle all included accessories with care. When plugging or unplugging any accessory, always grip its plug/connector.
- The mounting method provided with the device has not been evaluated for reliability. Mounting the device on areas other than those specified in this guide may cause injury and damage to property. When in doubt, please consider using supplemental means of securing the device on your setup.
- A maximum of 8 light strip extenders can be connected to the Razer RZ43-042401.
- Keep the device and its components away from liquid, humidity or moisture. Operate the device only within the specific temperature range of 0°C (32°F) to 40°C (104°F). Should the temperature exceed this range, unplug and turn off the device in order to let the temperature stabilize to an optimal level.

MAINTENANCE AND USE

The Razer RZ43-042401 requires minimum maintenance to keep it in optimum condition. Once a month, we recommend you clean it using a soft cloth to prevent dirt buildup. Do not use soap or harsh cleaning agents.

LEGALESE

COPYRIGHT AND INTELLECTUAL PROPERTY INFORMATION

©2022 Razer Inc. All rights reserved. Razer, the triple-headed snake logo, Razer logo, "For Gamers. By Gamers." and "Razer Chroma" are trademarks or registered trademarks of Razer Inc. and/or affiliated companies in the United States and other countries.

Android, Google, Google Logo, Google Play, and the Google Play logo are registered trademarks of Google LLC.

Apple, the Apple logo, and iPhone are trademarks of Apple Inc., registered in the U.S. and other countries. App Store is a service mark of Apple Inc. iOS is a trademark or registered trademark of Cisco in the U.S. and other countries and is used under license.

The Bluetooth® word mark and logos are registered trademarks owned by Bluetooth SIG, Inc., and any use of such marks by Razer is under license.

Windows and the Windows logo are trademarks of the Microsoft group of companies.

Razer Inc. ("Razer") may have copyright, trademarks, trade secrets, patents, patent applications, or other intellectual property rights (whether registered or unregistered) concerning the product in this guide. Furnishing of this guide does not give you a license to any such copyright, trademark, patent or other intellectual property right. The Razer RZ43-042401 (the "Product") may differ from pictures whether on packaging or otherwise. Razer assumes no responsibility for such differences or for any errors that may appear. Information contained herein is subject to change without notice.

LIMITED PRODUCT WARRANTY

For the latest and current terms of the Limited Product Warranty, please visit [razer.com/warranty](https://www.razer.com/warranty).

LIMITATION OF LIABILITY

Razer shall in no event be liable for any lost profits, loss of information or data, special, incidental, indirect, punitive or consequential or incidental damages, arising in any way out of distribution of, sale of, resale of, use of, or inability to use the Product. In no event shall Razer's liability exceed the retail purchase price of the Product.

GENERAL

These terms shall be governed by and construed under the laws of the jurisdiction in which the Product was purchased. If any term herein is held to be invalid or unenforceable, then such term (in

so far as it is invalid or unenforceable) shall be given no effect and deemed to be excluded without invalidating any of the remaining terms. Razer reserves the right to amend any term at any time without notice.

REGULATORY & COMPLIANCE INFORMATION

FCC STATEMENT

This equipment has been tested and found to comply with the limits for a Class B digital device, pursuant to part 15 of the FCC Rules. These limits are designed to provide reasonable protection against harmful interference in a residential installation. This equipment generates uses and can radiate radio frequency energy and, if not installed and used in accordance with the instructions, may cause harmful interference to radio communications. However, there is no guarantee that interference will not occur in a particular installation. If this equipment does cause harmful interference to radio or television reception, which can be determined by turning the equipment off and on, the user is encouraged to try to correct the interference by one or more of the following measures:

- Reorient or relocate the receiving antenna.
- Increase the separation between the equipment and receiver.
- Connect the equipment into an outlet on a circuit different from that to which the receiver is connected.
- Consult the dealer or an experienced radio/TV technician for help.

This device complies with FCC radiation exposure limits set forth for an uncontrolled environment and it also complies with Part 15 of the FCC RF Rules. This equipment must not be co-located or operating in conjunction with any other antenna or transmitter. End-users and installers must be provide with antenna installation instructions and consider removing the no-collocation statement. This device complies with Part 15 of the FCC Rules. Operation is subject to the following two conditions:

- (1) this device may not cause harmful interference, and
- (2) this device must accept any interference received, including interference that may cause undesired operation.

Caution!

Any changes or modifications not expressly approved by the party responsible for compliance could void the user's authority to operate the equipment.

This equipment should be installed and operated with minimum distance 20cm between the radiator and your body

CANADA STATEMENT

This device contains licence-exempt transmitter(s)/receiver(s) that comply with Innovation, Science and Economic Development Canada's licence-exempt RSS(s). Operation is subject to the following two conditions:

- (1) This device may not cause interference.
- (2) This device must accept any interference, including interference that may cause undesired operation of the device.

L'émetteur/récepteur exempt de licence contenu dans le présent appareil est conforme aux CNR d'Innovation, Sciences et Développement économique Canada applicables aux appareils radio exempts de licence. L'exploitation est autorisée aux deux conditions suivantes :

- (1) L'appareil ne doit pas produire de brouillage;
- (2) L'appareil doit accepter tout brouillage radioélectrique subi, même si le brouillage est susceptible d'en compromettre le fonctionnement.

The device meets the exemption from the routine evaluation limits in section 2.5 of RSS 102 and compliance with RSS-102 RF exposure, users can obtain Canadian information on RF exposure and compliance.

Le dispositif rencontre l'exemption des limites courantes d'évaluation dans la section 2.5 de RSS 102 et la conformité à l'exposition de RSS-102 rf, utilisateurs peut obtenir l'information canadienne sur l'exposition et la conformité de rf.

NOTICE FOR CANADA

This Class B digital apparatus complies with Canadian ICES-005.

Cet appareil numérique de la classe B est conforme à la norme ICES-005 du Canada.

CANADIAN CLASS B STATEMENT: This digital apparatus does not exceed the Class B limits for radio noise emissions from digital apparatus as set out in the radio interference regulations of Industry Canada.

Le présent appareil numérique n'émet pas de bruits radioélectriques dépassant les limites applicables aux appareils numériques de Classe B prescrites dans le règlement sur le brouillage radioélectrique édicté par Industrie Canada.

CANADA RADIATION EXPOSURE STATEMENT

This equipment complies with ISED radiation exposure limits set forth for an uncontrolled environment. This transmitter must not be co-located or operating in conjunction with any other antenna or transmitter. This equipment should be installed and operated with a minimum distance of 20cm between the radiator and your body.

Cet équipement est conforme aux limites d'exposition aux rayonnements ISED établies pour un environnement non contrôlé. Cet émetteur ne doit pas être Co-place ou ne fonctionnant en même temps qu'aucune autre antenne ou émetteur. Cet équipement devrait être installé et actionné avec une distance minimum de 20cm entre le radiateur et votre corps.