



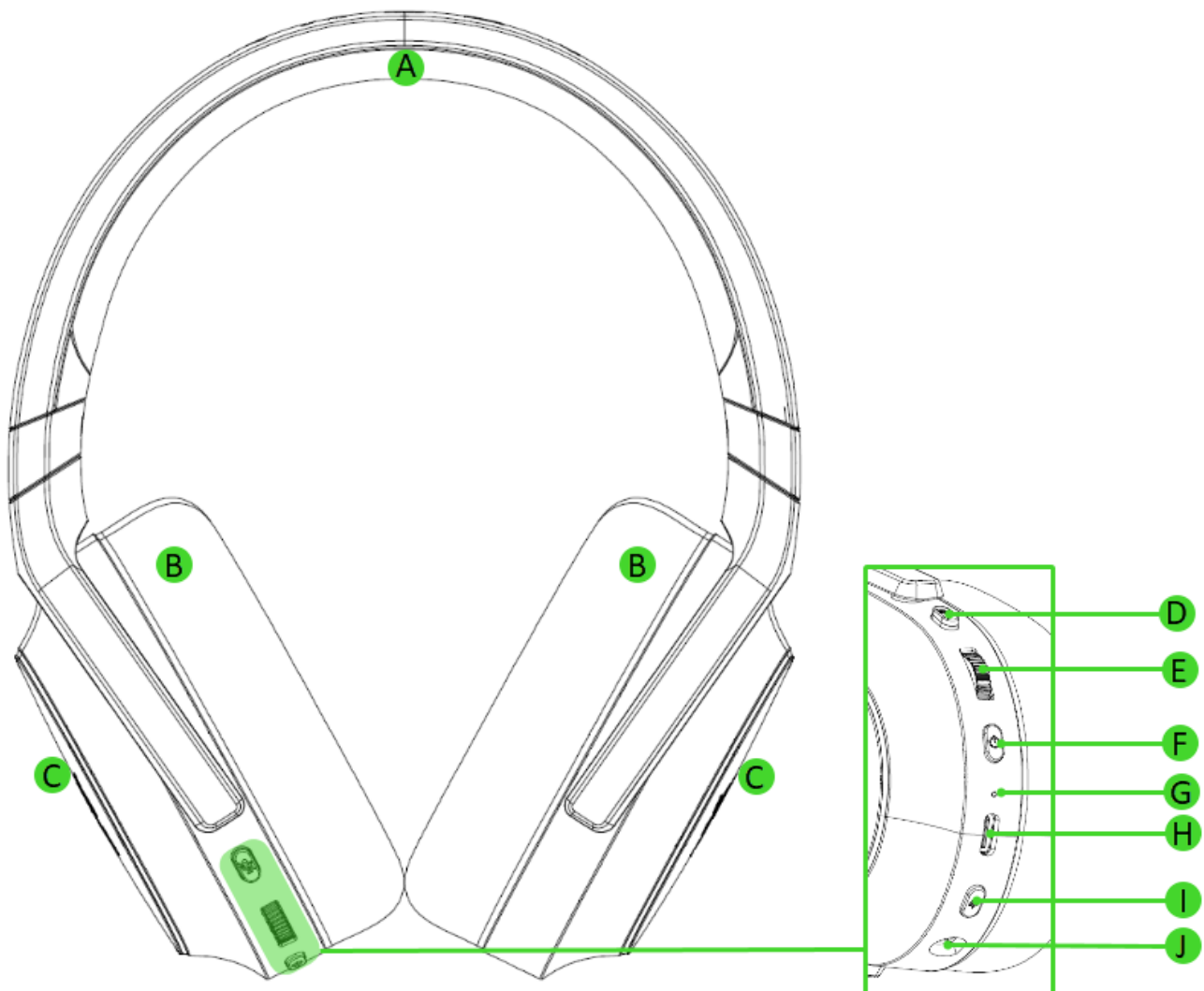
# WIRELESS HEADSET (RZ04-0522)

IMPORTANT PRODUCT INFORMATION GUIDE

---

## WHAT'S INSIDE

- WIRELESS HEADSET (RZ04-0522)



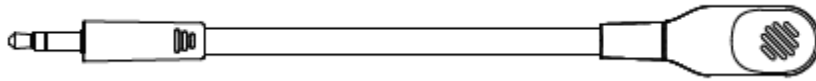
- A. Adjustable padded headband
- B. Razer™ TriForce 40 mm drivers with memory foam cushions
- C. 6-Zone earcup lighting Powered by Razer Chroma™ RGB

- G. Status Indicator
- H. USB Type C charging port
- I. Razer™ Smartswitch Dual Wireless button
  - 2.4Ghz Mode
  - Bluetooth® Mode
- J. Microphone jack

- USB Type C Razer™ HyperSpeed Wireless Dongle



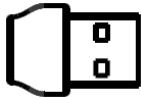
- Removable Razer™ HyperClear Cardioid Mic



- USB Type C charging cable



- Type C to Type A adapter



- Important Product Information Guide

---

## WHAT'S NEEDED

### PRODUCT REQUIREMENTS

- Devices with Bluetooth audio capability or USB Type C / Type A port

### RAZER SYNAPSE REQUIREMENTS

- Windows 10 (or higher)
- Internet connection for app installation

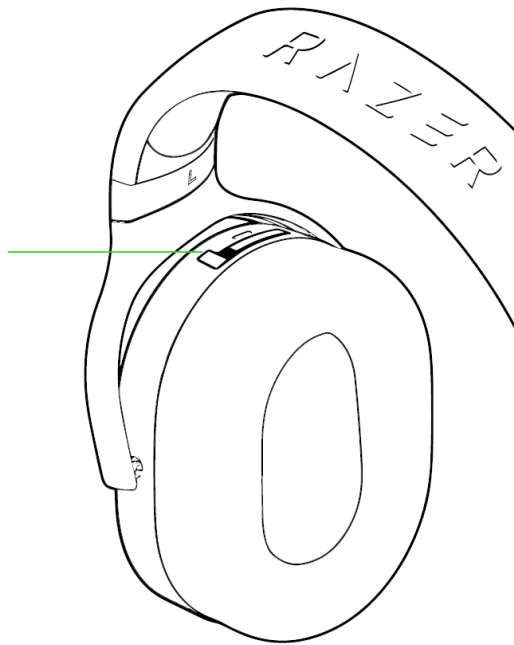
### RAZER AUDIO APP REQUIREMENTS

- iOS 12 / Android 8.1 Oreo (or higher)
- Internet connection for app installation

---

## LET'S GET YOU COVERED

*Your product's serial number can be found here.*

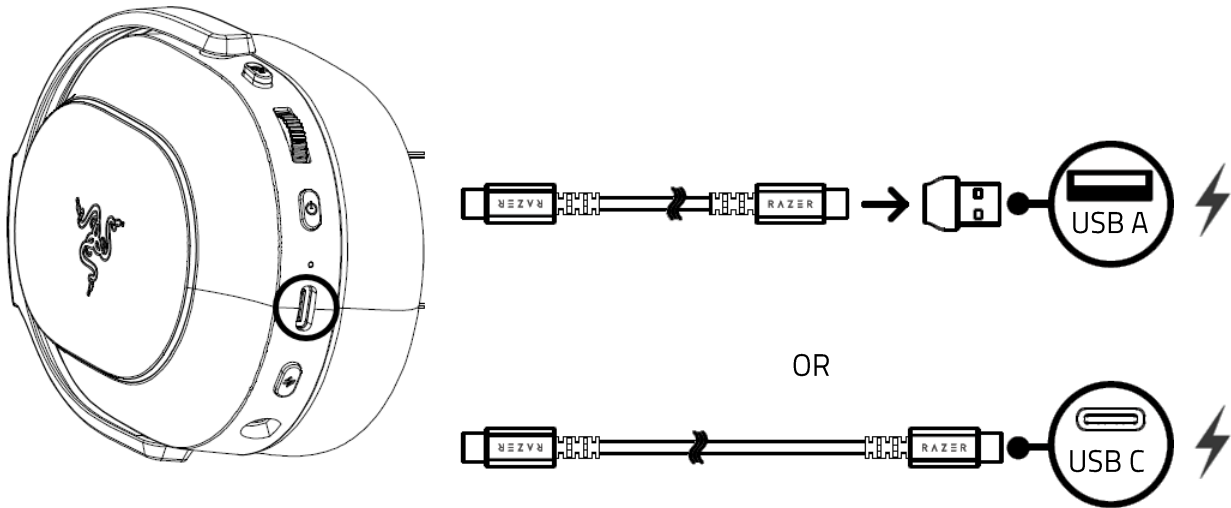


Register your product and score exclusive benefits  
[razerid.razer.com/warranty](https://razerid.razer.com/warranty)

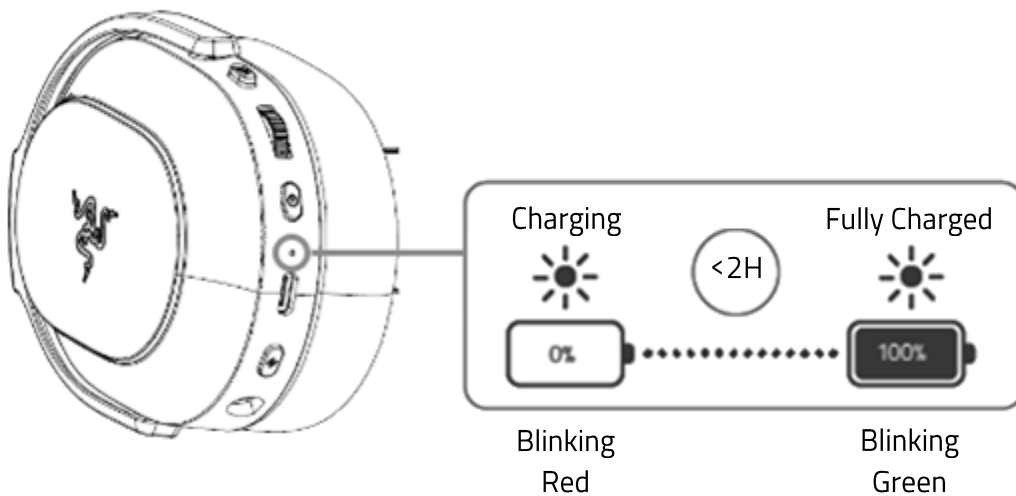
## GETTING STARTED

### CHARGE YOUR HEADSET

1

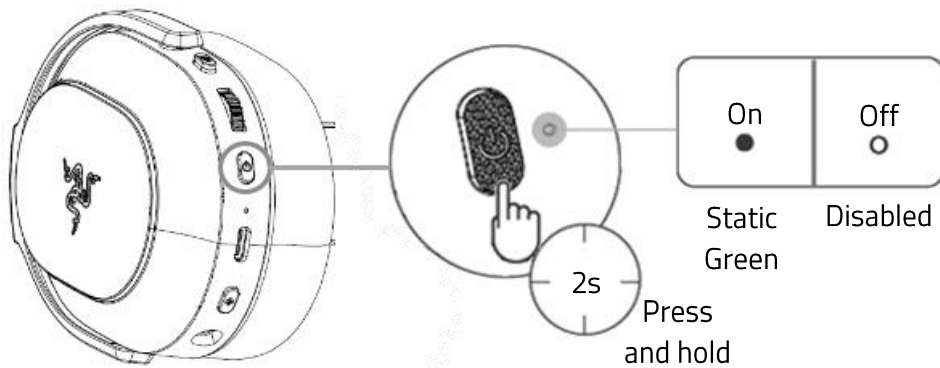


2



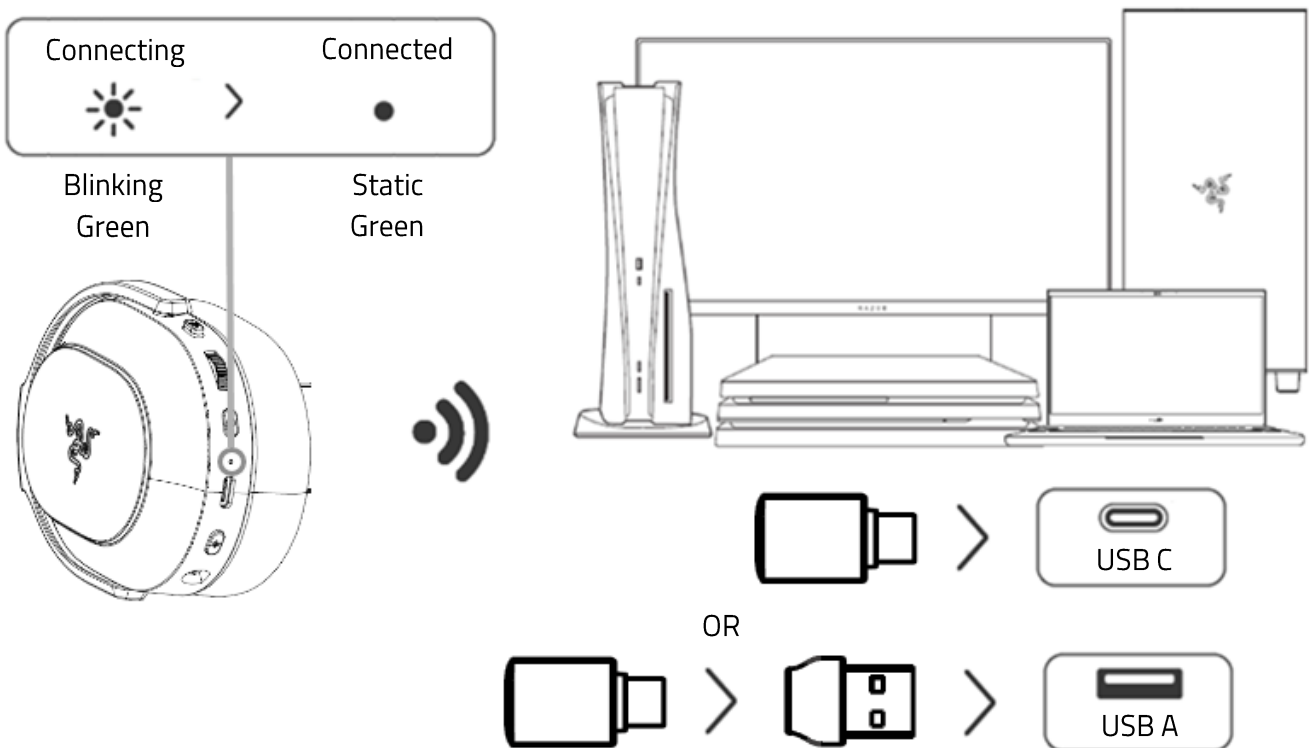
*For best results, connect your Wireless Headset (RZ04-0522) directly to your computer's USB port using the provided cable.*

## POWER YOUR HEADSET ON/OFF



## CONNECT TO YOUR DEVICE

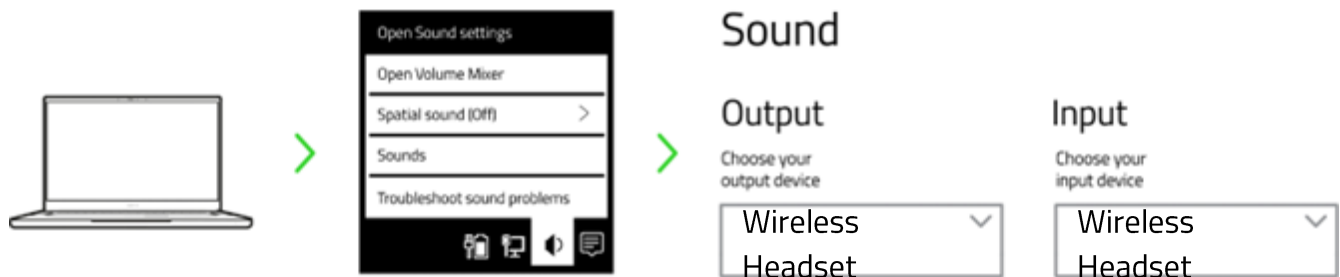
### 2.4GHZ MODE



**i** Install Razer Synapse when prompted or download the installer from [razer.com/synapse](https://www.razer.com/synapse).

### Set Up For PC

When using your headset with a compatible device, set Wireless Headset (RZ04-0522) as its default input and output device. Also, download Razer Synapse to unlock the full feature set of your device.



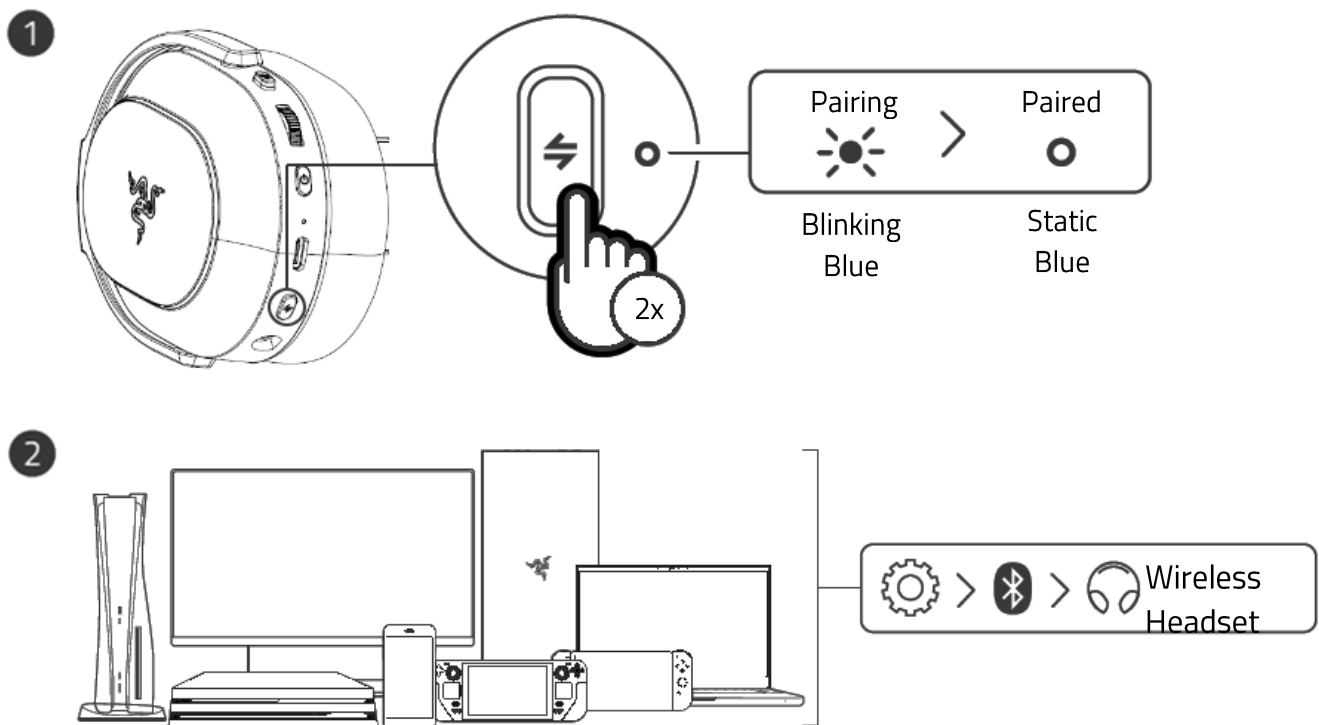
### Activate 7.1 Surround Sound\*

Experience accurate positional sound that's specifically designed for games, movies, and music.

1. Download the 7.1 Surround Sound software from [razer.com/7.1-surround-sound](https://www.razer.com/7.1-surround-sound)
2. Register your product at [razerid.razer.com/products](https://razerid.razer.com/products) to get your activation code sent to your email.

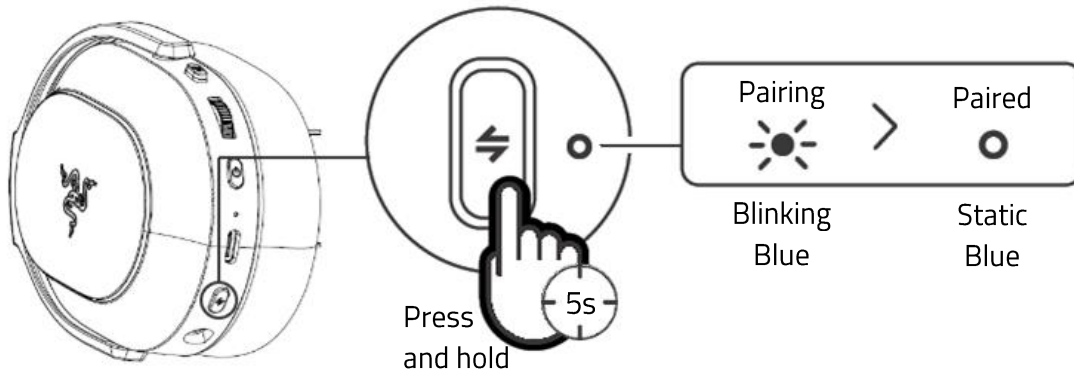
*\*Only available on Windows 10 64-bit (or higher)*

### BLUETOOTH® MODE



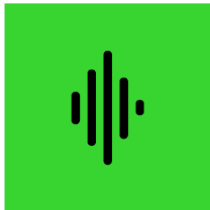
*\* If pairing times out, power on the headset and use the re-pairing step to reactivate pairing.*

## Re-Pairing Your Headset



## Set Up For Mobile

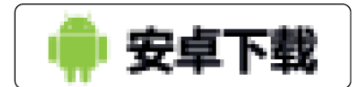
Download the Razer Audio App to customize your headset's EQ settings, auto shutoff feature, gaming mode, and much more — anytime, anywhere.



Razer Audio



OR



RZR.TO/AUDAPP  
(For China only)



*When using the Razer Audio app, make sure that the headset is only connected to your mobile device via Bluetooth.*

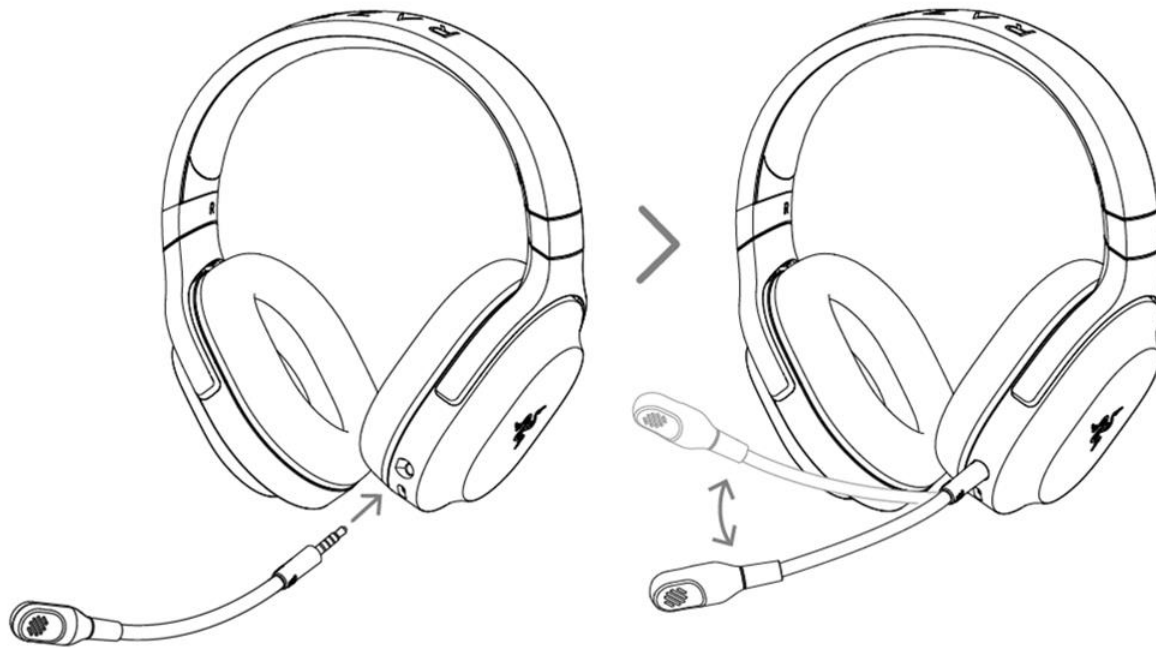


---

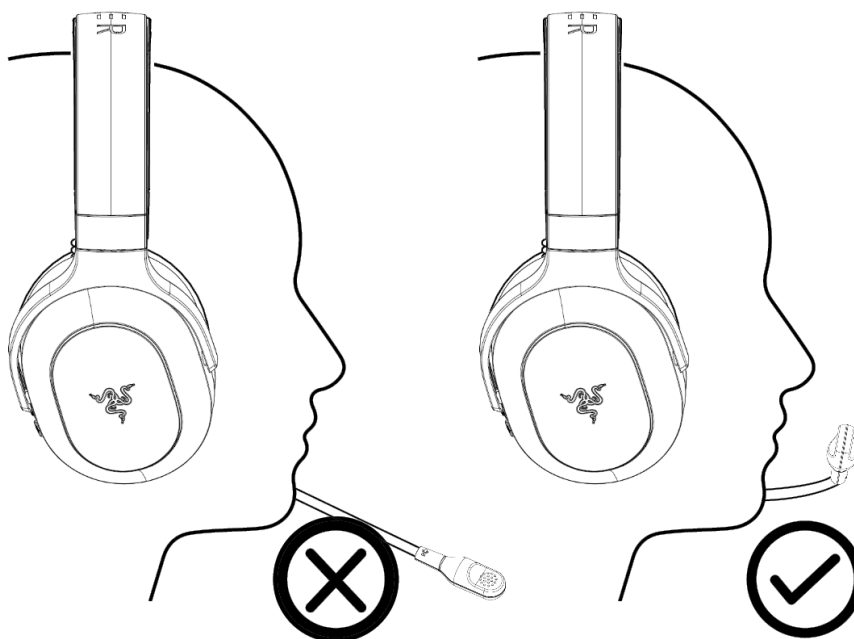
## USING YOUR WIRELESS HEADSET (RZ04-0522)

### RAZER HYPERCLEAR CARDIOID MIC

#### PLUG IN THE MIC



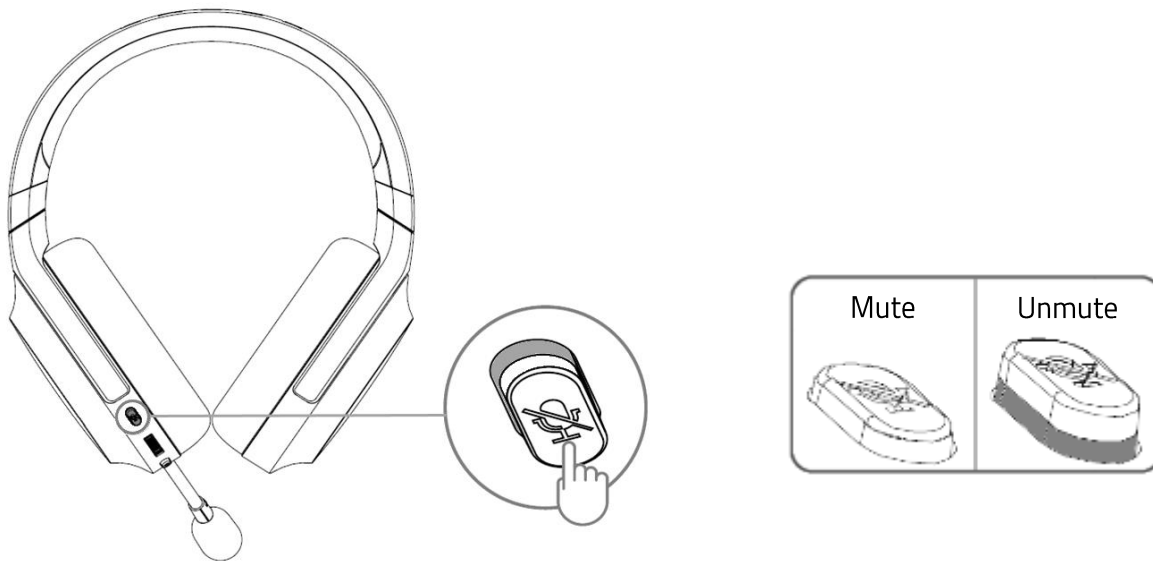
#### PROPER MIC PLACEMENT



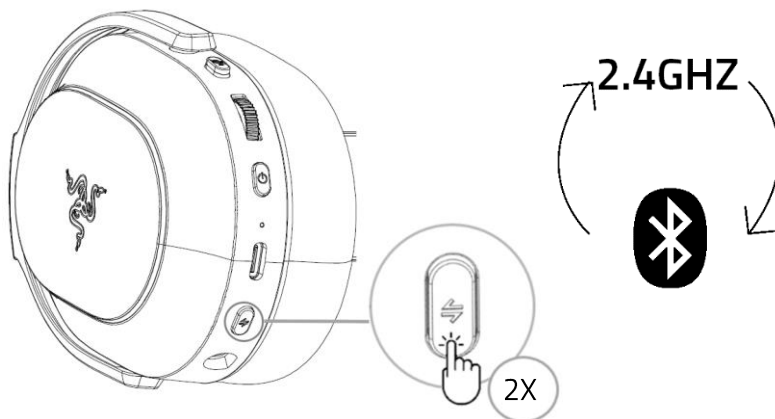
In front of  
your mouth

Away from  
your mouth

## SET THE MIC TO MUTE/UNMUTE

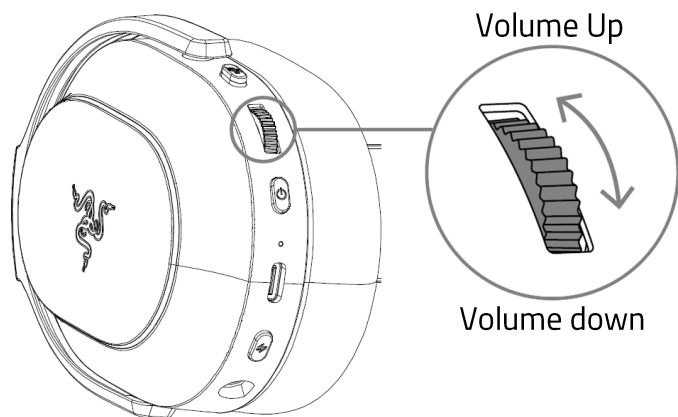


## SWITCH BETWEEN WIRELESS MODES

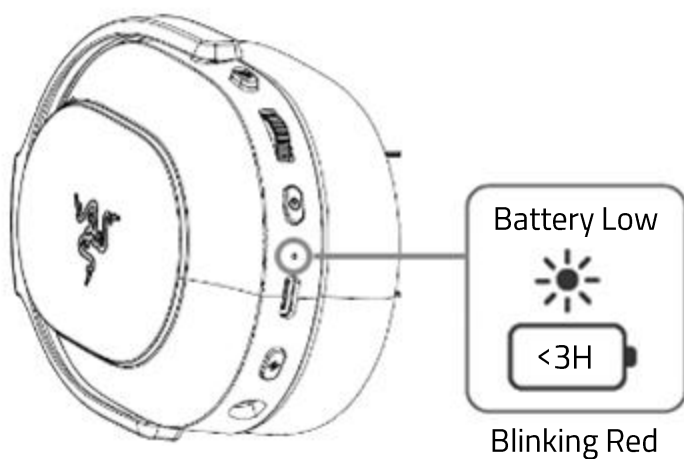


**i** To use the SmartSwitch function, the headset must be connected to both wireless modes.

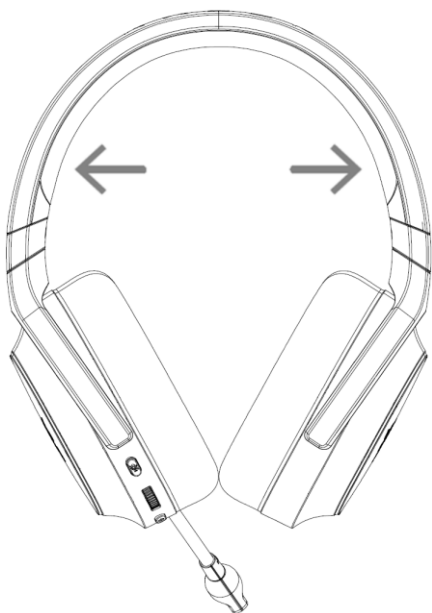
## TURN THE VOLUME CONTROLS



## CHECK THE BATTERY STATUS



## ADJUST FOR COMFORT





*Gently stretch the headbands before wearing the headset but do not overstretch it to avoid permanent damage.*

Find out more about your gaming-grade headset at [support.razer.com](https://support.razer.com)

---

## SAFETY AND MAINTENANCE

### SAFETY GUIDELINES

In order to achieve maximum safety while using your Wireless Headset (RZ04-0522), we suggest that you adopt the following guidelines:

Should you have trouble operating the device properly and troubleshooting does not work, unplug the device and contact the Razer hotline or go to [support.razer.com](https://support.razer.com) for assistance.

Do not take apart the device (doing so will void your warranty) and do not attempt to operate it under abnormal current loads.

Keep the device away from liquid, humidity or moisture. Operate the device only within the specific temperature range of 0°C (32°F) to 40°C (104°F). Should the temperature exceed this range, unplug and/or switch off the device in order to let the temperature stabilize to an optimal level.

We recommend stretching the headset gently apart before placing them over your head to minimize headband stress. However, please avoid overstretching the headset beyond its technical limits.

The device isolates external ambient sounds even at low volumes, resulting in lowered awareness of your external surroundings. Please remove the device when engaging in any activities that requires active awareness of your surroundings.

Listening to excessively loud volumes over extended periods of time can damage your hearing. Furthermore, legislation of certain countries permits a maximum sound level of 86dB to affect your hearing for 8 hours a day. We therefore recommend that you reduce the volume to a comfortable level when listening for prolonged periods of time. Please, take good care of your hearing.

### MAINTENANCE AND USE

The Wireless Headset (RZ04-0522) requires minimum maintenance to keep it in optimum condition. Once a month we recommend you clean it using a soft cloth or cotton swab to prevent dirt buildup. Do not use soap or harsh cleaning agents.

---

## LEGALESE

### **COPYRIGHT AND INTELLECTUAL PROPERTY INFORMATION**

©2024 Razer Inc. All rights reserved. Razer, the triple-headed snake logo, Razer logo, "For Gamers. By Gamers.", and "Razer Chroma" logo are trademarks or registered trademarks of Razer Inc. or affiliated companies in the United States and other countries. All other trademarks are the property of their respective owners.

Copyright © 2003-2023 by Bluetooth SIG, Inc. The Bluetooth® word mark and logos are registered trademarks owned by Bluetooth SIG, Inc.

Windows and the Windows logo are trademarks or registered trademarks of the Microsoft group of companies.

Razer Inc. ("Razer") may have copyright, trademarks, trade secrets, patents, patent applications, or other intellectual property rights (whether registered or unregistered) concerning the product in this guide. Furnishing of this guide does not give you a license to any such copyright, trademark, patent, or other intellectual property right. The Wireless Headset (RZ04-0522) (the "Product") may differ from pictures whether on packaging or otherwise. Razer assumes no responsibility for such differences or for any errors that may appear. Information contained herein is subject to change without notice.

### **LIMITED PRODUCT WARRANTY**

For the latest and current terms of the Limited Product Warranty, please visit [razer.com/warranty](https://razer.com/warranty).

### **LIMITATION OF LIABILITY**

Razer shall in no event be liable for any lost profits, loss of information or data, special, incidental, indirect, punitive or consequential or incidental damages, arising in any way out of distribution of, sale of, resale of, use of, or inability to use the Product. In no event shall Razer's liability exceed the retail purchase price of the Product.

### **GENERAL**

These terms shall be governed by and construed under the laws of the jurisdiction in which the Product was purchased. If any term herein is held to be invalid or unenforceable, then such term (in so far as it is invalid or unenforceable) shall be given no effect and deemed to be excluded without invalidating any of the remaining terms. Razer reserves the right to amend any term at any time without notice.

## FCC Compliance Statements

This device complies with Part 15 of the FCC Rules. Operation is subject to the following two conditions: (1) this device may not cause harmful interference, and (2) this device must accept any interference received, including interference that may cause undesired operation.

Note: This equipment has been tested and found to comply with the limits for a Class B digital device, pursuant to Part 15 of the FCC Rules. These limits are designed to provide reasonable protection against harmful interference in a residential installation. This equipment generates, uses and can radiate radio frequency energy and, if not installed and used in accordance with the instructions, may cause harmful interference to radio communications. However, there is no guarantee that interference will not occur in a particular installation.

If this equipment does cause harmful interference to radio or television reception, which can be determined by turning the equipment off and on, the user is encouraged to try to correct the interference by one or more of the following measures:

- Reorient or relocate the receiving antenna.
- Increase the separation between the equipment and receiver.
- Connect the equipment into an outlet on a circuit different from that to which the receiver is connected.
- Consult the dealer or an experienced radio/TV technician for help.

Caution: Changes or modifications not expressly approved by the party responsible for compliance could void the user's authority to operate the equipment.

## ISED Compliance Statements

This device contains licence-exempt transmitter(s)/receiver(s) that comply with Innovation, Science and Economic Development Canada's licence-exempt RSS(s). Operation is subject to the following two conditions:

- (1) This device may not cause interference.
- (2) This device must accept any interference, including interference that may cause undesired operation of the device.

L'émetteur/récepteur exempt de licence contenu dans le présent appareil est conforme aux CNR d'Innovation, Sciences et Développement économique Canada applicables aux appareils radio exempts de licence. L'exploitation est autorisée aux deux conditions suivantes :

- (1) L'appareil ne doit pas produire de brouillage;
- (2) L'appareil doit accepter tout brouillage radioélectrique subi, même si le brouillage est susceptible d'en compromettre le fonctionnement.

## RF Exposure Information (SAR)

Specific Absorption Rate (SAR) refers to the rate at which the body absorbs RF energy. This equipment has been tested and meets applicable limits for radio frequency (RF) exposure. During testing, device radios are set to their highest transmission levels and placed in positions that simulate use near the head and body, with 0 mm separation. Accessories with metal parts may change the RF performance of the device and use such accessories should be avoided. The SAR limit is 1.6 W/kg over 1 gram of tissue in US/Canada.

Le débit d'absorption spécifique (DAS) renvoie au débit avec lequel le corps absorbe l'énergie RF. Cet équipement a été testé et est conforme aux limites applicables en termes d'exposition aux radiofréquences (RF). Pendant le test, les appareils radios sont configurés à leur niveau de transmission le plus élevé et placés dans une position simulant une utilisation près de la tête et du corps, avec 0 mm de séparation. Les accessoires possédant des pièces métalliques peuvent modifier la performance RF de l'appareil. L'utilisation de ces accessoires est donc déconseillée. La limite DAS est de 1,6 W/kg pour 1 gramme de tissu aux États-Unis/au Canada.



THIS PRODUCT COMPLIES WITH APPLIANCE EFFICIENCY PROGRAM /  
CE PRODUIT EST CONFORME AU PROGRAMME D'EFFICACITÉ  
ÉNERGÉTIQUE DES APPAREILS



## CE Statement of Compliance

ENGLISH

STATEMENT OF COMPLIANCE WITH EU DIRECTIVE

Hereby, Razer (Europe) GmbH, declares that this Wireless Headset Model: RZ04-0522 and Wireless Dongle Model: RC30-0517 is in compliance with the essential requirements and other relevant provisions of Directive 2014/53/EU and 2015/863/EU.

The full Declaration of Conformity is accessible via the following: Internet address:  
[razer.com/legal/compliance](http://razer.com/legal/compliance)

### Wireless Headset

Radio Frequency: 2.4 GHz SRD/Bluetooth

Operating Frequency: 2402-2480MHz

Max Output power:  $\leq 13\text{dBm}$

SW version: 1.0

### Wireless Dongle:

Radio Frequency: 2.4 GHz SRD

Operating Frequency:

2402-2480MHz

Max Output power:  $\leq 10\text{dBm}$

SW version: 1.0

RF exposure (SAR): The SAR limit of Europe is 2.0 W/kg. The device can safely be used with a distance of 5 mm to the human body. The maximum SAR test value for this device is 1.5 W/kg.



## WASTE ELECTRICAL AND ELECTRONIC EQUIPMENT INFORMATION

### ENGLISH

Correct Disposal of This Product (Waste Electrical & Electronic Equipment) (Applicable in the European Union and other European countries with separate collection systems) This marking shown on the product or its literature, indicates that it should not be disposed with other household wastes at the end of its working life. To prevent possible harm to the environment or human health from uncontrolled waste disposal, please separate this from other types of wastes and recycle it responsibly to promote the sustainable reuse of material resources. Household users should contact either the retailer where they purchased this product, or their local government office, for details of where and how they can take this item for environmentally safe recycling.

Business users should contact their supplier and check the terms and conditions of the purchase contract. This product should not be mixed with other commercial wastes for disposal.



This equipment is for home use, and has acquired electromagnetic conformity registration, so it can be used not only in residential areas, but also other areas.

Li-ion

Battery: Build-In Battery

Battery Type: Lithium-ion Battery

Do not attempt to replace or remove the battery yourself, you may damage the battery which could cause overheating, fire, and injury. The built-in battery should be replaced by authorized service provider, and must be recycled or disposed of separately from household waste. Dispose of batteries according to your local environmental laws and guidelines.

Batterie: Integrierte Batterie

Batterie-Typ: Lithium-Ionen-Akku

Bevor du die Batterie entfernst, achte darauf, dass sie komplett entladen ist, und schau im Benutzerhandbuch nach, ob es spezielle Hinweise dazu gibt. Bitte entsorge Batterien gemäß den für dich geltenden Umweltbestimmungen und Richtlinien.