



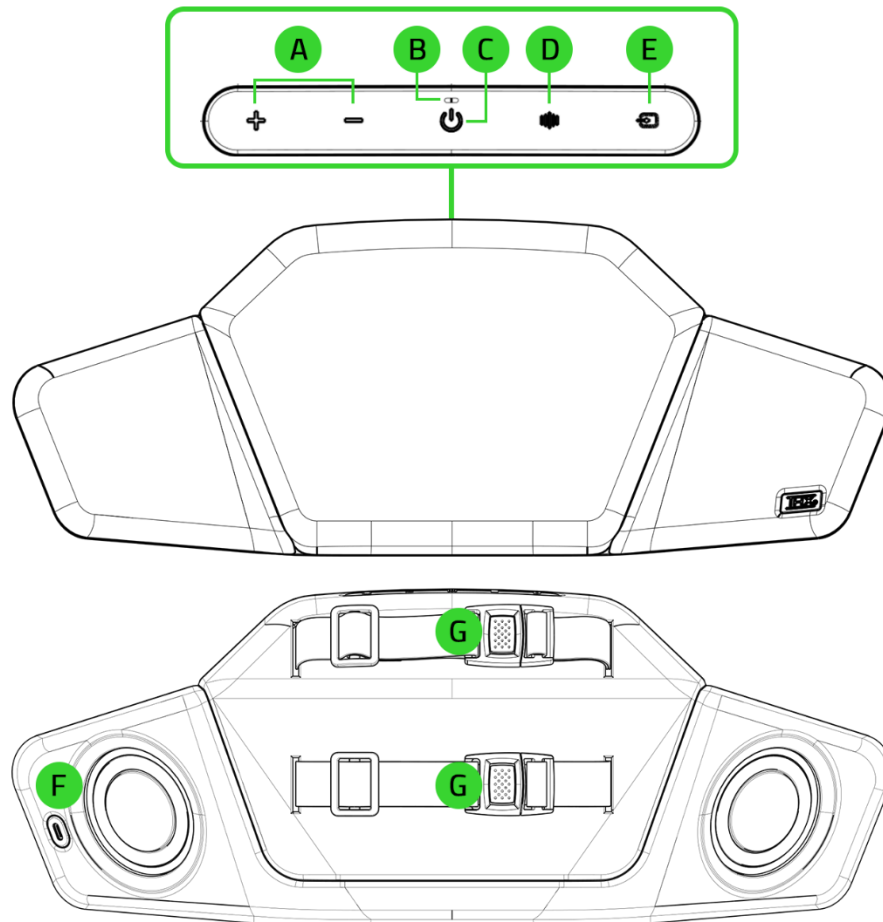
HEAD CUSHION SPEAKER (RC81-0435),  
WIRELESS DONGLE (RC30-0435)

IMPORTANT PRODUCT INFORMATION GUIDE

---

## WHAT'S INSIDE

- HEAD CUSHION SPEAKER (RC81-0435), WIRELESS DONGLE (RC30-0435)



A. Volume control buttons

B. Indicator LED

C. Power button

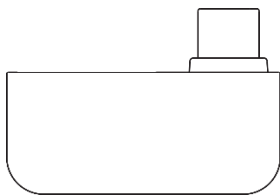
D. EQ Button

E. Source button

F. Charging port

G. Adjustable chair straps

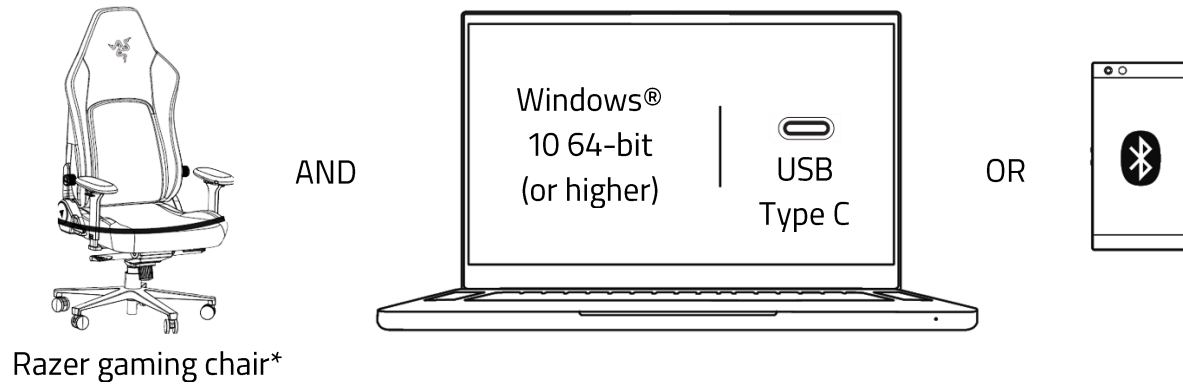
- USB Type C HyperSpeed Wireless Dongle



- Important Product Information Guide

---

## WHAT'S NEEDED



*\*Not included. Also compatible with other third-party gaming chairs.*

---

## LET'S GET YOU COVERED

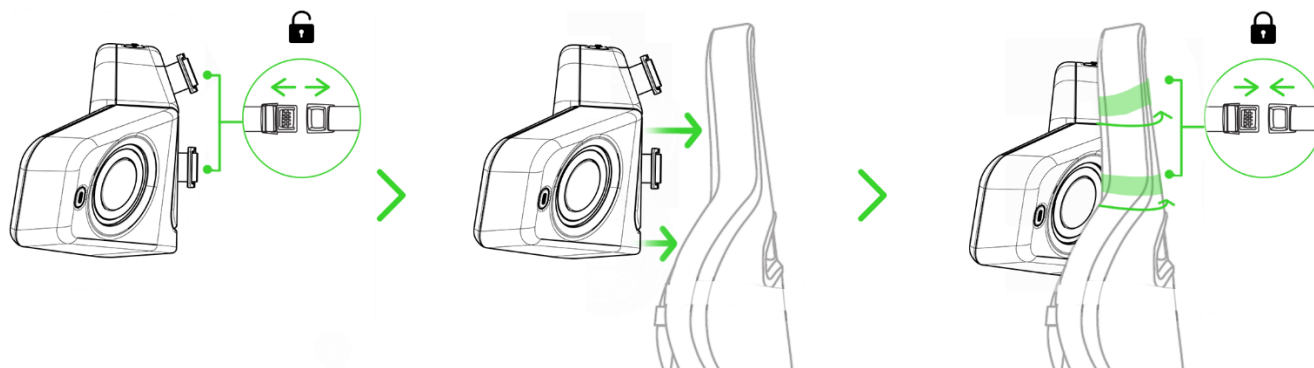


Register your product and score exclusive benefits  
[razerid.razer.com/warranty](https://razerid.razer.com/warranty)

*Your product's  
serial number can  
be found here.*

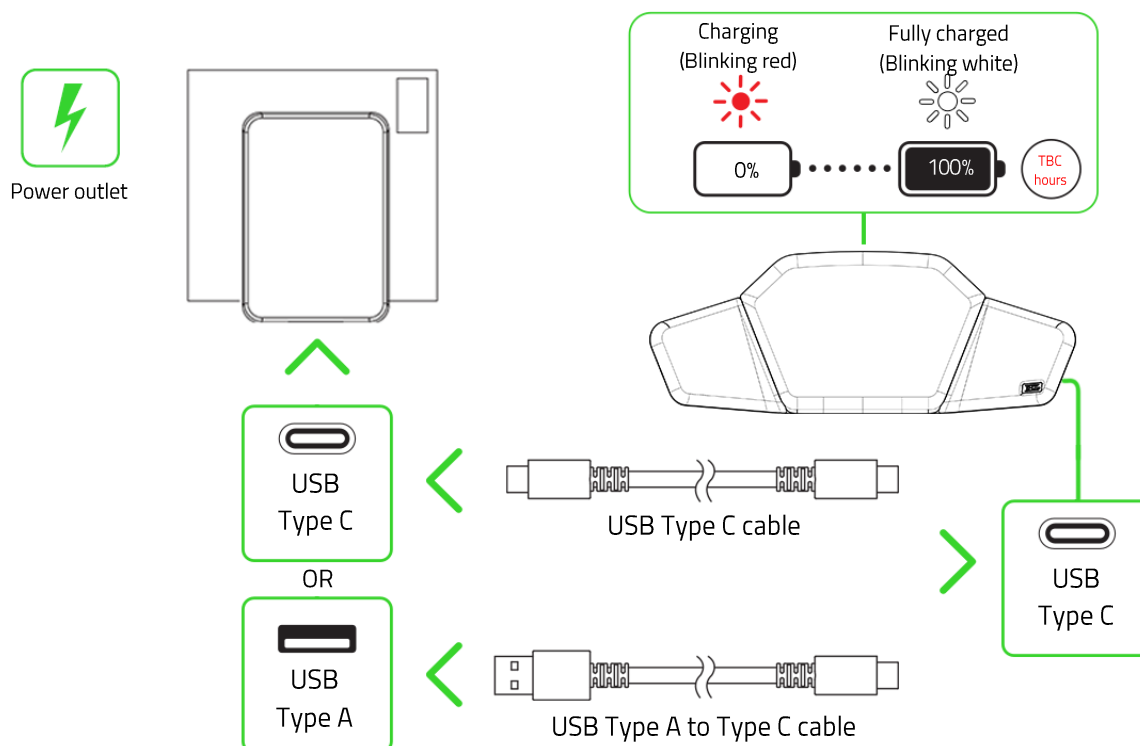
## SETTING UP YOUR HEAD CUSHION SPEAKER (RC81-0435), WIRELESS DONGLE (RC30-0435)

### ATTACHING YOUR HEAD CUSHION



**i** Make sure the head cushion is securely strapped into your gaming chair (not included).

### CHARGING YOUR HEAD CUSHION



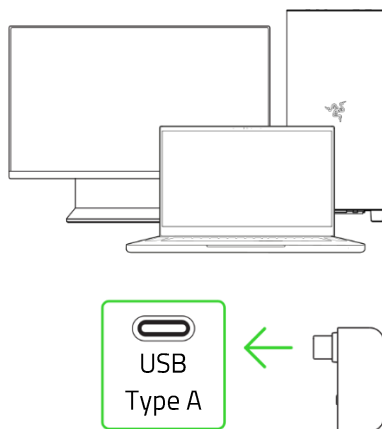
- i** External charger and cable are sold separately. When charging the head cushion, always organize the cable to avoid tripping hazards. Alternatively, detach the head cushion when charging.

---

## CONNECTING TO YOUR HEAD CUSHION

### A. RAZER HYPERSPEED WIRELESS MODE (2.4 GHZ)

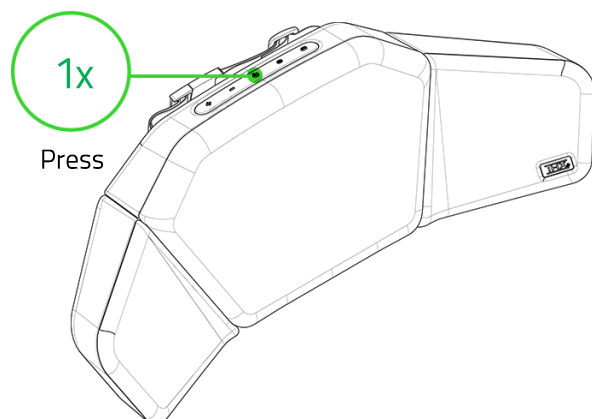
1.



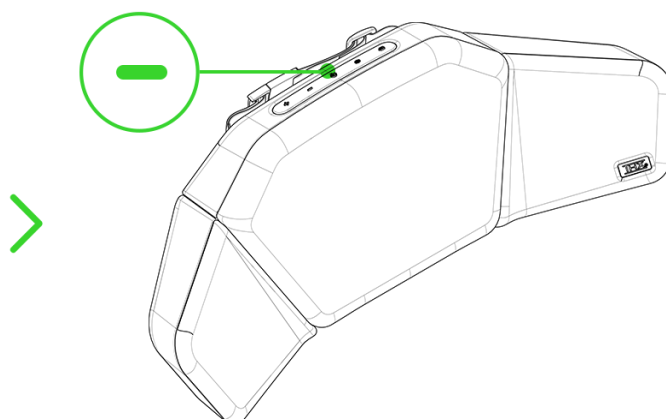
- !** Install Razer Synapse when prompted, or download the installer from [razer.com/synapse](https://www.razer.com/synapse).

2.

Power on



Razer HyperSpeed  
Wireless mode  
(Connected - Solid green)



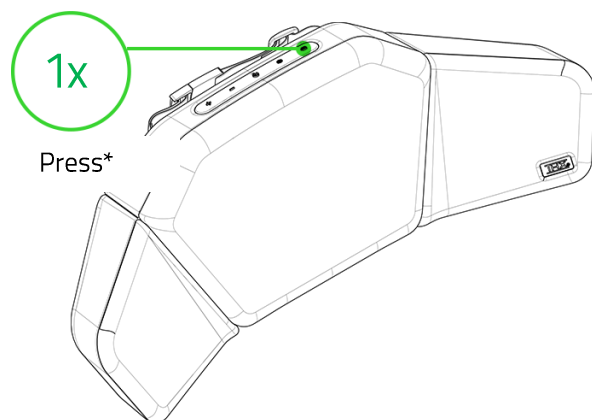
**i** When using the head cushion with a compatible device, set HEAD CUSHION SPEAKER (RC81-0435), WIRELESS DONGLE (RC30-0435) as the default input and output device (if applicable).

Your head cushion is now ready to use in Razer HyperSpeed Wireless mode (2.4 GHz).

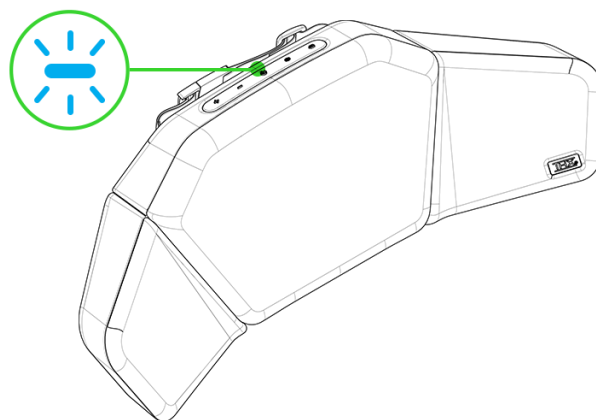
## B. BLUETOOTH MODE

1.

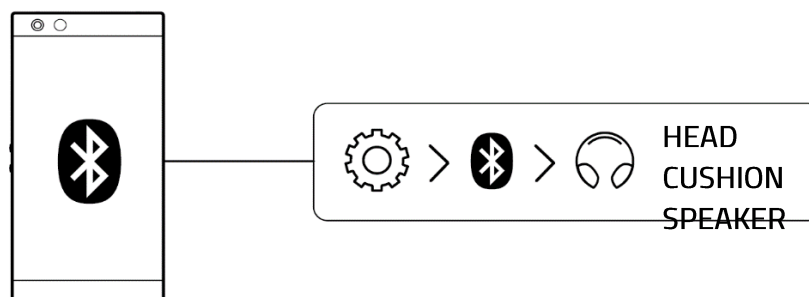
Switch to  
Bluetooth mode



Bluetooth mode  
(Pairing - Blinking blue)\*

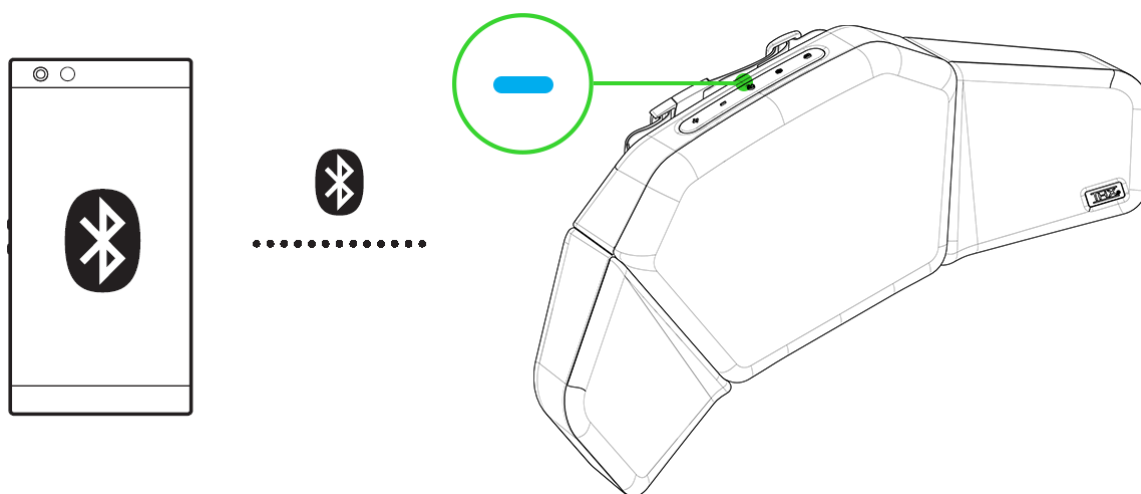


2.



3.

Bluetooth mode  
(Paired – Solid blue)



Your head cushion is now ready to use in Bluetooth mode.

## RAZER SYNAPSE (PC)

Customize the audio of your head cushion by customizing equalizer presets or creating your own. Enhance sound details, seamlessly switch between using it as a primary speaker, or transform it into a rear surround speaker to complement your existing soundbar or 2.0/2.1 system.

**i** Only available on Windows 10 64-bit (or higher).

## ACTIVATE THE 7.1 SURROUND SOUND\*

Experience accurate positional sound specifically designed for games, movies, and music.

1. Download the 7.1 Surround Sound software from [razer.com/7.1-surround-sound](https://razer.com/7.1-surround-sound).
2. Register your product at [razerid.razer.com/products](https://razerid.razer.com/products) to get your activation code sent to your email.

*\*Only available on Windows 10 64-bit and above.*

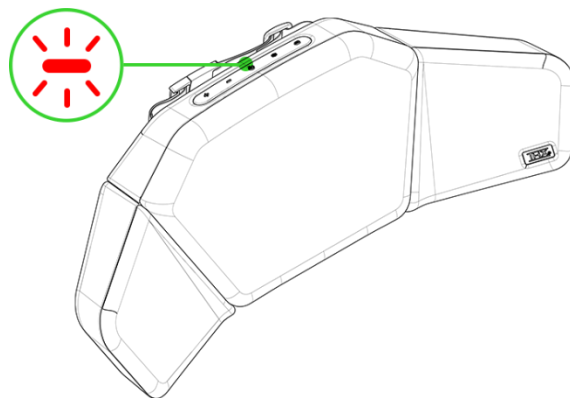
Find out more about your brand-new headset at [support.razer.com](https://support.razer.com)

---

## USING THE HEAD CUSHION

### LOW BATTERY NOTIFICATION

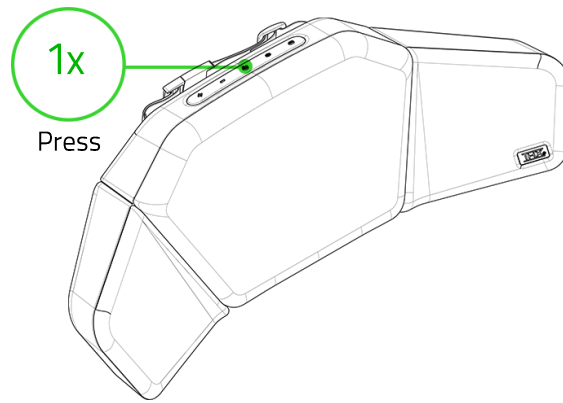
LOW BATTERY  
(Blinking red)



**i** *This notification will repeat until the battery is drained or until the head cushion is charged.*

### POWER ON / OFF





Press

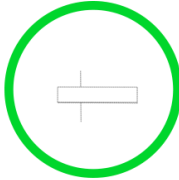


*The indicator LED will display the current audio source upon being powered on.*

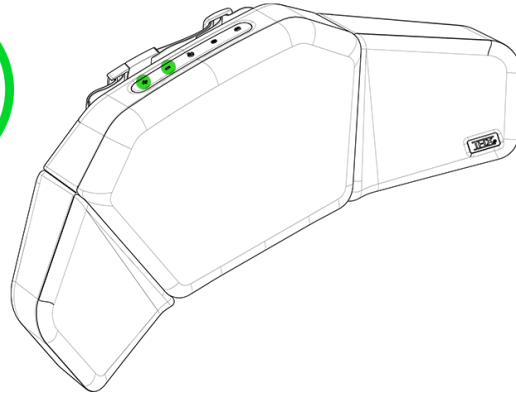
## ADJUSTING THE AUDIO VOLUME



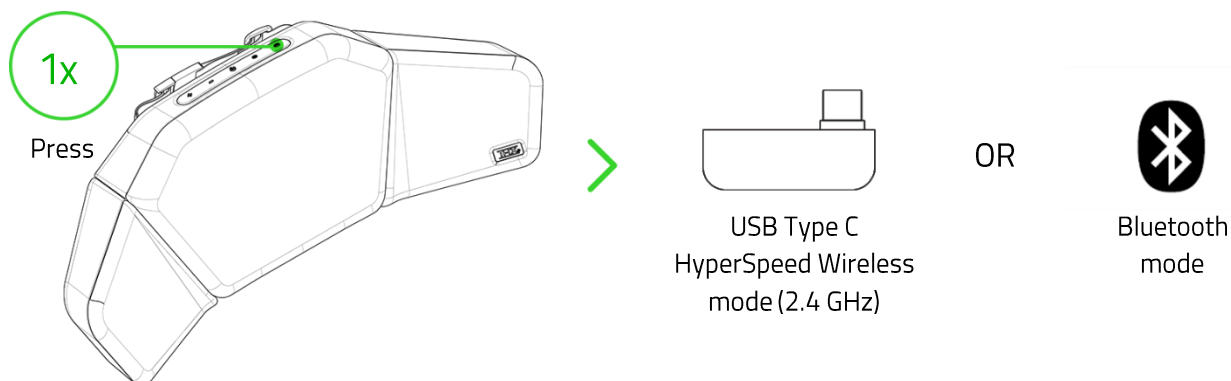
Increase  
volume



Decrease  
volume

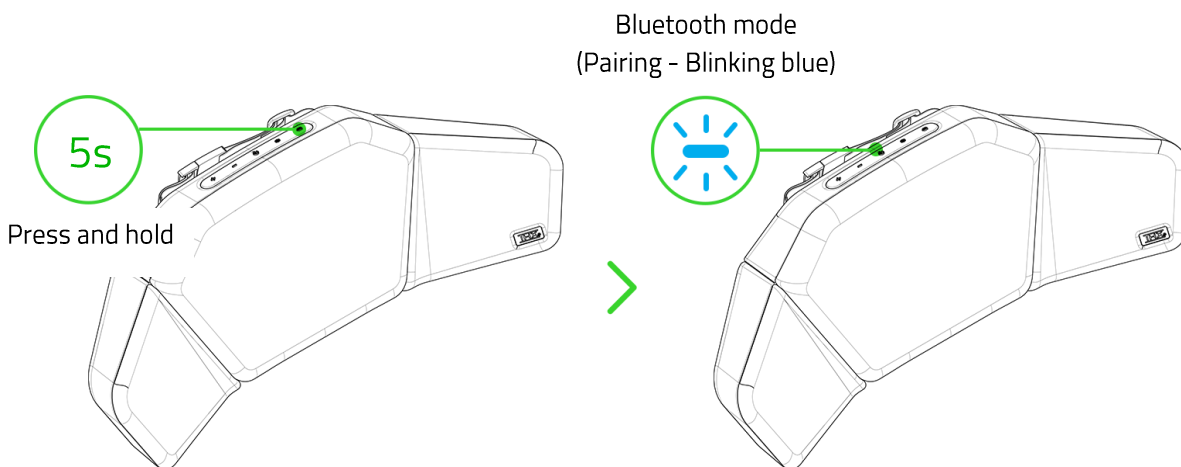


## SWITCHING BETWEEN SOURCES

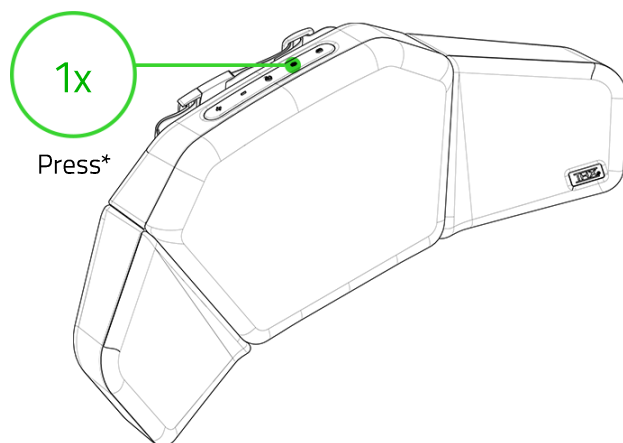


**i** Using Bluetooth as an audio source will reconnect the head cushion to the last paired device after it has been powered on again. Pairing mode will be activated if no device is found.

## ACTIVATING BLUETOOTH PAIRING MODE (FOR NEW DEVICES)



## CYCLING THROUGH EQ PRESETS



### EQ Presets

Game
Movie
Music
Custom

*\*Repeat to cycle through presets.*



You can also use the Razer Synapse app to switch between EQ presets. The Custom preset will only be available after being enabled on Razer Synapse.

---

## SAFETY AND MAINTENANCE

### SAFETY GUIDELINES

To achieve maximum safety while using your HEAD CUSHION SPEAKER (RC81-0435), WIRELESS DONGLE (RC30-0435), we suggest that you adopt the following guidelines:

- Should you need help operating the HEAD CUSHION SPEAKER (RC81-0435), WIRELESS DONGLE (RC30-0435) properly and troubleshooting does not work, contact the Razer hotline or go to [support.razer.com](https://support.razer.com) for assistance.

- Don't disassemble, drop, or subject the head cushion to undue pressure. Don't operate it under abnormal current loads. Doing so will void your warranty.
- Don't use the head cushion with wet hands or body.
- To prevent the head cushion's color from fading and upholstery from drying, avoid exposure to high heat such as a radiator or a fireplace, and keep out of direct sunlight.
- Always make sure the head cushion is strapped tightly and correctly propped up against your gaming chair.
- To prevent damage to the upholstery, keep the head cushion away from sharp objects or pets with claws and teeth.
- If you experience any physical discomfort while using the head cushion, please consult a qualified medical doctor immediately.
- Listening to excessively loud volumes over extended periods can damage your hearing. Furthermore, legislation of certain countries permits a maximum sound level of 86db to affect your hearing for 8 hours a day. We, therefore, recommend that you reduce the volume to a comfortable level when listening for prolonged periods. Please take good care of your hearing.
- Use caution when operating the head cushion to avoid electrical shock or damage, such as powering it off and unplugging it when not in use and/or during thunderstorms, ensuring that your hands are dry before using (and handling) the device, keeping it away from any source of liquid and/or heat source, and using all other reasonable precautions needed under the circumstances.

## MAINTENANCE

The HEAD CUSHION SPEAKER (RC81-0435), WIRELESS DONGLE (RC30-0435) requires minimum maintenance to keep it in optimum condition. Constant exposure to friction, skin, and bodily fluids can degrade the materials over time. We recommend that you clean the head cushion once a month using a soft or microfiber cloth with a bit of warm water to prevent sweat and dirt buildup. Immediately clean up spills to avoid stains and completely air dry before using the head cushion again. Don't use soap, harsh cleaning agents, or abrasives to avoid damaging the head cushion.

---

## LEGALESE

### COPYRIGHT AND INTELLECTUAL PROPERTY INFORMATION

©2024 Razer Inc. All rights reserved. Razer, the triple-headed snake logo, Razer logo, and "For Gamers. By Gamers." are trademarks or registered trademarks of Razer Inc. and/or affiliated companies in the United States or other countries. All other trademarks are the property of their respective owners.

Android, Google, Google Logo, Google Play, and the Google Play logo are trademarks of Google LLC.

Apple, the Apple logo, and iPhone are trademarks of Apple Inc., registered in the U.S. and other countries. App Store is a service mark of Apple Inc. iOS is a trademark or registered trademark of Cisco in the U.S. and other countries and is used under license.

The Bluetooth® word mark and logos are registered trademarks owned by Bluetooth SIG, Inc., and any use of such marks by Razer is under license.

Windows and the Windows logo are trademarks of the Microsoft group of companies.

Razer Inc. ("Razer") may have copyright, trademarks, trade secrets, patents, patent applications, or other intellectual property rights (whether registered or unregistered) concerning the product in this guide. Furnishing of this guide does not give you a license to any such copyright, trademark, patent or other intellectual property right. The HEAD CUSHION SPEAKER (RC81-0435), WIRELESS DONGLE (RC30-0435) (the "Product") may differ from pictures whether on packaging or otherwise. Razer assumes no responsibility for such differences or for any errors that may appear. Information contained herein is subject to change without notice.

## LIMITED PRODUCT WARRANTY

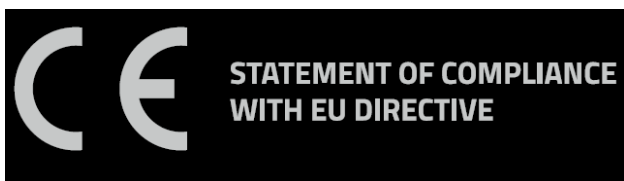
For the latest and current terms of the Limited Product Warranty, please visit [razer.com/warranty](https://razer.com/warranty).

## LIMITATION OF LIABILITY

Razer shall in no event be liable for any lost profits, loss of information or data, special, incidental, indirect, punitive or consequential or incidental damages, arising in any way out of distribution of, sale of, resale of, use of, or inability to use the Product. In no event shall Razer's liability exceed the retail purchase price of the Product.

## GENERAL

These terms shall be governed by and construed under the laws of the jurisdiction in which the Product was purchased. If any term herein is held to be invalid or unenforceable, then such term (in so far as it is invalid or unenforceable) shall be given no effect and deemed to be excluded without invalidating any of the remaining terms. Razer reserves the right to amend any term at any time without notice.



## STATEMENT OF COMPLIANCE WITH EU DIRECTIVE

Hereby, Razer (Europe) GmbH, declares that this Head Cushion Speaker Model: RC81-0435, Wireless Dongle Model: RC30-0435) is in compliance with the requirements and other relevant provisions of Directive 2014/53/EU and 2015/863/EU.

### [HEAD CUSHION SPEAKER]

2.4GHz SRD/Bluetooth

Operating Frequency: 2402 - 2480Mhz

RF Output power: <12dBm

Software Version: V1.0

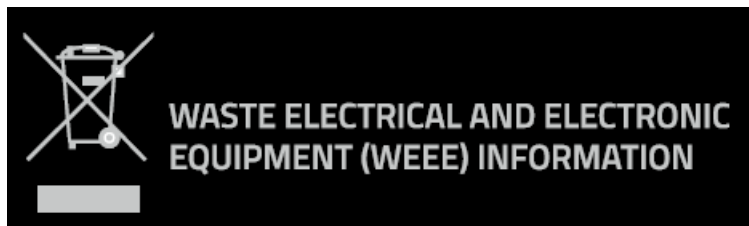
### [WIRELESS DONGLE]

2.4GHz SRD

Operating Frequency: 2402 - 2480Mhz

RF Output power: <13dBm

Software Version: V1.0



Correct Disposal of This Product (Waste Electrical & Electronic Equipment) (Applicable in the European Union and other European countries with separate collection systems) This marking shown on the product or its literature, indicates that it should not be disposed with other household wastes at the end of its working life. To prevent possible harm to the environment or human health from uncontrolled waste disposal, please separate this from other types of wastes and recycle it responsibly to promote the sustainable reuse of material resources. Household users should contact either the retailer where they purchased this product, or their local government office, for details of where and how they can take this item for environmentally safe recycling. Business users should contact their supplier and check the terms and conditions of the purchase contract. This product should not be mixed with other commercial wastes for disposal.



This equipment is for home use, and has acquired electromagnetic conformity registration, so it can be used not only in residential areas, but also other areas.

### **BATTERY INFO**

Risk of fire or explosion or defeat the safeguard of equipment if the battery is replaced by an incorrect type. Replace only with the same or equivalent type. Disposal of a battery into fire or a hot oven, or mechanically crushing or cutting of a battery, that can result in an explosion. High or low extreme temperatures or low air pressure at high altitude that the battery can be subjected to during use, storage or transportation. Leaving the battery in an extremely high temperature and/or low air pressure surrounding environment that can result in an explosion or the leakage of flammable liquid or gas.

### **BATTERY WARNING**

The Head Cushion Speaker contains a Li-ion rechargeable battery. In general, the life expectancy of such batteries is dependent upon usage. If you suspect that the Li-ion rechargeable battery inside the Head Cushion Speaker may be drained (has a low charge), try charging it. Caution: Do not open, mutilate, or expose to conducting materials (metal), moisture, liquid, fire, or heat. Doing so may cause batteries to leak or explode, resulting in personal injury. Battery life varies with usage.





## FCC NOTICE

This equipment complies with FCC radiation exposure limits set forth for an uncontrolled environment. This transmitter must not be co located or operating in conjunction with any other antenna or transmitter. This equipment should be installed and operated with minimum distance 0cm between the radiator and your body.

This equipment has been tested and found to comply with the limits for a Class B digital device, pursuant to part 15 of the FCC Rules. These limits are designed to provide reasonable protection against harmful interference in a residential installation. This equipment generates, uses and can radiate radio frequency energy and, if not installed and used in accordance with the instructions, may cause harmful interference to radio communications.

However, there is no guarantee that interference will not occur in a particular installation. If this equipment does cause harmful interference to radio or television reception, which can be determined by turning the equipment off and on, the user is encouraged to try to correct the interference by one or more of the following measures:

- Reorient or relocate the receiving antenna.
- Increase the separation between the equipment and the receiver.
- Connect the equipment into an outlet on a circuit different from that to which the receiver is connected.
- Consult the dealer or an experienced radio/TV technician for help

This device complies with Part 15 of the FCC Rules. Operation is subject to the following two conditions:

- (1) this device may not cause harmful interference, and
- (2) this device must accept any interference received, including interference that may cause undesired operation.

## Caution!

**Any changes or modifications not expressly approved by the party responsible for compliance could void the user's authority to operate the equipment.**

## FCC RF Exposure Information and Statement

The SAR limit of USA (FCC) is 1.6 W/kg averaged over one gram of tissue. This device has been

tested to comply with FCC Specific Absorption Rate (SAR) compliance. The highest reported SAR level for usage near the body (5mm) is 0.334 W/kg.

This equipment must not be co-located or operating in conjunction with any other antenna or transmitter. End-users and installers must be provided with antenna installation instructions and consider removing the no-collocation statement.

#### **Canada Statement**

##### **RSS-Gen(P23):**

This device contains licence-exempt transmitter(s)/receiver(s) that comply with Innovation, Science and Economic Development Canada's licence-exempt RSS(s). Operation is subject to the following two conditions:

- (1) This device may not cause interference.
- (2) This device must accept any interference, including interference that may cause undesired operation of the device.

L'émetteur/récepteur exempt de licence contenu dans le présent appareil est conforme aux CNR d'Innovation, Sciences et Développement économique Canada applicables aux appareils radio exempts de licence. L'exploitation est autorisée aux deux conditions suivantes :

- 1) L'appareil ne doit pas produire de brouillage;
- 2) L'appareil doit accepter tout brouillage radioélectrique subi, même si le brouillage est susceptible d'en compromettre le fonctionnement.

#### **NOTICE FOR CANADA / AVIS POUR LE CANADA**

This Class B digital apparatus complies with Canadian ICES-003.

Cet appareil numérique de la classe B est conforme à la norme NMB-003 du Canada.

**CANADIAN CLASS B STATEMENT:** This digital apparatus does not exceed the Class B limits for radio noise emissions from digital apparatus as set out in the radio interference regulations of Industry Canada.

#### **DÉCLARATION DE CLASSE B DU CANADA:**

Le présent appareil numérique n'émet pas de bruits radioélectriques dépassant les limites applicables aux appareils numériques de Classe B prescrites dans le règlement sur le brouillage radioélectrique édicté par Industrie Canada.

#### **CANADA SAR**

This transmitter must not be co-located or operating in conjunction with any other antenna or transmitter. This equipment should be installed and operated with a minimum distance of 5mm between the radiator and your body.

Cet émetteur ne doit pas être installé ou fonctionner en conjonction avec une autre antenne ou un autre émetteur. Cet équipement devrait être installé et actionné avec une distance minimum de 5mm entre le radiateur et votre corps.



**ENGLISH**

The power delivered by the charger must be between min 2.5 Watts required by the radio equipment, and max 15 Watts in order to achieve the maximum charging speed.