



# ***PD*Talk** G18**

Communication **Fun**  
Value



Quick Reference Manual

## **Copyright**

Copyright © 2004 Group Sense PDA Ltd., All rights reserved.

Palm OS and the Palm Powered logo are registered trademarks and Palm Desktop is a trademark of the Palm Trademark Holding Company, LLC. HotSync and Graffiti are registered trademarks of PalmSource, Inc. Other brands names may be trademarks of their respective owners.

THE CHINESE HANDWRITING RECOGNITION SYSTEM IS AUTHORIZED BY HANWANG TECHNOLOGY CO., LTD.

The manufacturer reserves the right to change the specifications without notice.

---

# Contents

---

<b>Section 1: Introduction to Palm functions</b>	<b>1</b>
1. PC system requirements . . . . .	1
2. Understanding G18 interface and controls . . . . .	2
3. Tapping versus clicking . . . . .	4
4. Starting G18 and calibrating its screen . . . . .	4
5. Adjusting screen brightness and contrast . . . . .	5
6. To launch applications . . . . .	5
7. Introduction to G18 interface . . . . .	6
8. Setting up the G18 interface . . . . .	9
9. Setting date, time and time zone . . . . .	10
10. Setting Sleep Mode . . . . .	11
11. Setting alert sound and volume . . . . .	11
12. Setting system interface language . . . . .	12
13. Setting up phone to phone IRDA data transfer . . . . .	14
14. GPRS/communication setting . . . . .	14
15. Using the onscreen keyboard . . . . .	16
Using Graffiti 2 . . . . .	17
The Graffiti 2 alphabet . . . . .	18
Writing punctuation marks and other special characters . . . . .	18
Graffiti 2 tips . . . . .	19
16. Installing add-on applications . . . . .	19
17. Removing applications . . . . .	21
18. HotSync Setting . . . . .	22
Selecting HotSync setup options . . . . .	23
19. IR HotSync operations . . . . .	26
Preparing your computer for IRDA communication . . . . .	26
Configuring HotSync Manager for IRDA communication . . . . .	26
Performing an IR HotSync operation . . . . .	27
Using HotSync cable for HotSync operations . . . . .	27
20. Flash BackupMan . . . . .	28
21. Data transfer from other Palm terminals . . . . .	29

---

<b>Section 2 : Communication and PDA Features</b>	<b>34</b>
1. Using the Phone . . . . .	34
To launch the Phone application . . . . .	34
Making a call . . . . .	36
Receiving a call . . . . .	37
Call Setting. . . . .	38
Call Time . . . . .	40
Call Records . . . . .	40
Speed Dial . . . . .	41
Phone Security Setting . . . . .	41
Phone ringing Setting. . . . .	44
Quick Switch . . . . .	46
Testing the Phone Connection . . . . .	47
2. Using the SMS Short Message . . . . .	49
To launch the SMS application . . . . .	49
SMS setting . . . . .	49
Writing SMS & Sending SMS . . . . .	50
Receiving SMS . . . . .	51
Replying SMS & Forwarding SMS . . . . .	52
3. Using the EMailer . . . . .	54
To launch the EMailer application . . . . .	54
Setting. . . . .	54
To choose the folder . . . . .	57
To create and send an e-mail . . . . .	57
To browse an e-mail . . . . .	59
To edit an e-mail. . . . .	59
To delete an e-mail . . . . .	59
To reply an e-mail . . . . .	60
To search. . . . .	60
4. Using the jBrowser . . . . .	61
To launch the jBrowser application . . . . .	61
Surfing Net. . . . .	64
Favorites. . . . .	64
History . . . . .	65
Statistics . . . . .	65

---

5. Using the Camera . . . . .	66
To launch the Camera application . . . . .	66
To set the preferences of a photograph . . . . .	66
Taking photos . . . . .	66
Browsing photos. . . . .	67
6. Using the Photo Album . . . . .	68
Album management . . . . .	68
To play album. . . . .	70
To delete photos . . . . .	70
To browse photos . . . . .	70
7. Using the Photo Editor . . . . .	71
To launch the Photo Editor application . . . . .	71
To edit a picture . . . . .	72
The definition of the Toolbar icon . . . . .	72
8. Using the Address Book . . . . .	73
To launch the Address Book application . . . . .	73
9. Using the Date Book . . . . .	76
To launch the Date Book application. . . . .	76
Scheduling timed events. . . . .	76
To schedule a timed event for another date . . . . .	78
Working in Week view . . . . .	80
Working in Month view . . . . .	81
Working in Agenda view . . . . .	81
<b>Appendix I: Safety</b>	<b>82</b>
<b>Appendix II: Install CD</b>	<b>85</b>
<b>Appendix III: Specification</b>	<b>87</b>
<b>Appendix IV: Care and maintenance</b>	<b>88</b>
<b>Appendix V: Reset your G18</b>	<b>89</b>
<b>Appendix VI: FCC Information</b>	<b>91</b>

# **Section 1: Introduction to Palm functions**

---

## **1. PC system requirements**

To install and operate Palm Desktop on Windows, your computer system should meet the following minimum hardware requirements:

- Windows 98/NT/2000/XP
- 16 MB RAM (64MB recommended for Windows 2000 or above)
- 20 MB available hard disk space
- VGA monitor or better
- CD-ROM drive (You can also download Palm Desktop software from the site <http://www.palm.com/intl>)
- Mouse pointing device
- One available serial port

2. Understanding G18 interface and controls

PDTalk G18 components:



## Section 1: Introduction to Palm functions

### 2. Understanding G18 interface and controls

---



**Power Button.** Pressing the power button turns the G18 on (if it is off) and returns to the last screen that was displayed. Press the power button to turn the G18 off. Use the backlight to illuminate the screen in low-light conditions.

**Text Input Area.** Write letters and numbers in this area using the Graffiti® 2 alphabet.

**Up/Down Key.** Displays text and other information that extends beyond the area of the G18 screen. Press the lower half of the scroll button to scroll down and view information below the viewing area. Press the upper half to view information above the viewing area.



## Section 1: Introduction to Palm functions

### 3. Tapping versus clicking

---

**Stylus.** The stylus is stored in the lower right corner holder.

**InfraRed Port.** Used to beam data between your G18 and another G18 or other Palm OS PDA and perform HotSync operations.

**Reset Button.** Press to restart your G18

**Serial Port Connector.** Connects your G18 to PC through HotSync cable. This allows you to update the information between your G18 and the computer using HotSync technology.

---

**TIP:** When you start the telephone function, the dimension of the keys will change. You may browse the introduction of telephone function for particular introduction.

---

## 3. Tapping versus clicking

Just as using a mouse pointer to click icons on your computer screen, you use the stylus to tap on icons on your G18 touch-screen. Tapping is the basic action used to execute tasks on your G18.

---

**IMPORTANT:** Always use the point of the stylus for tapping or making strokes on the G18 screen. Never use a ballpoint pen, pencil, or any other sharp object to write on the G18 screen.

---

## 4. Starting G18 and calibrating its screen

The first time you start the G18, setup instructions appear onscreen. These instructions include a calibration screen, or digitizer. Calibration aligns the internal circuitry of the G18 with its touch-sensitive screen so your G18 can detect the task you want to perform when you tap an element on the screen.

*To calibrate your screen:*

**1. Tap the Applications icon, and then tap Prefs.**

**2. In the pick list in the upper right corner of the screen, tap Digitizer.**

## Section 1: Introduction to Palm functions

### 5. Adjusting screen brightness and contrast

---

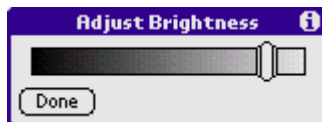
3. Follow the on-screen instructions, tapping the screen where indicated.

## 5. Adjusting screen brightness and contrast

*To adjust the brightness of your G18 screen:*

1. Turn on your device.

2. Tap the brightness of screen background icon at the screen bottom;



3. Tap the contrast icon at the screen bottom.



## 6. To launch applications

You can use the Applications Launcher to open any application installed on your G18. Or you can tap the application button in the front control panel to shift to another application.

## Section 1: Introduction to Palm functions

### 7. Introduction to G18 interface

*To open an application:*

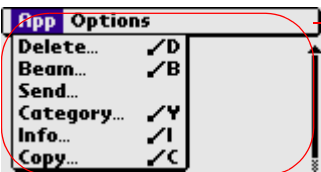
**Tap the Application icon.**



## 7. Introduction to G18 interface

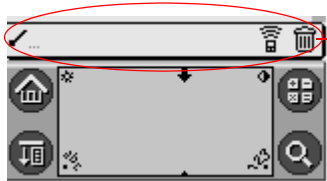
Your G18 includes the following interface elements:

- **Menu bar**.containing a set of menu commands specific to the application. Not all applications have a menu bar.



menu bar

- **Command bar**.Let you tap icons or write a ShortCut stroke to initiate a command instead of tapping a command in the menu bar. The icons displayed in the Command bar vary within each application.



command bar

- Command buttons that initiate a command when tapped. Command buttons appear in dialog boxes and at the bottom of application screens.

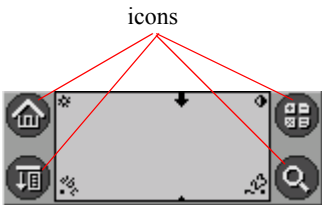
# Section 1: Introduction to Palm functions

## 7. Introduction to G18 interface

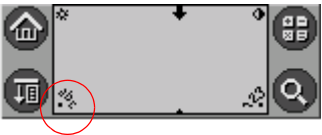
---



- Icons that open applications and menus, and find text anywhere in your data.



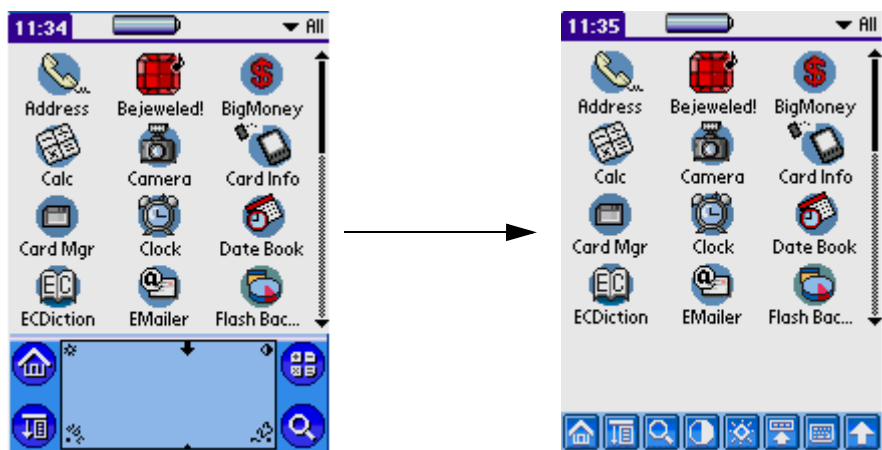
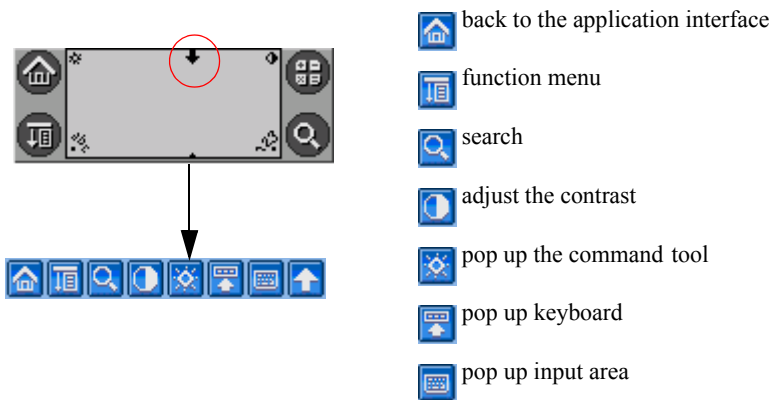
- An *abc* dot in the input area that activates the alphabetic keyboard when tapped; note that the cursor must be in an input field for this option to work.



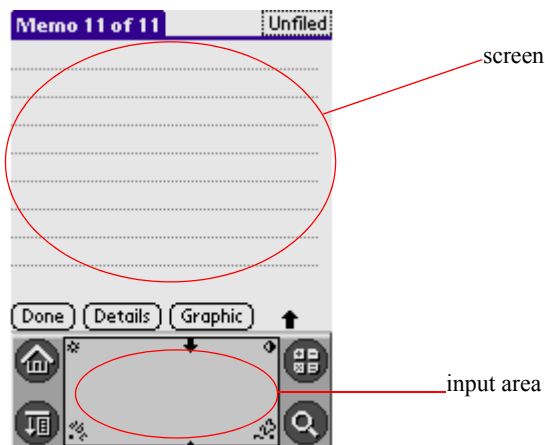
- A *123* dot in the input area that displays the numeric keyboard when tapped; note that the cursor must be in an input field for this option to work.
- **Exit the input area**

**Section 1: Introduction to Palm functions**  
*7. Introduction to G18 interface*

---



- **Text areas and screens** in which you can enter information.

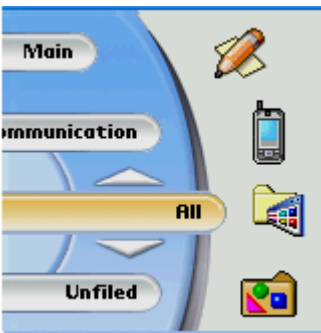


## 8. Setting up the G18 interface

- Interface setting

The G18 provides two user selectable interfaces

**1.The GSL interface:**



the GSL interface

The GSL interface have two setup launcher(the mobile telephone/ the palm computer)

- Tap the function menu at the bottom



the function menu

- Tap the setup launcher of the option.



to set the start-up application interface

to get the picture from the album as wallpaper.

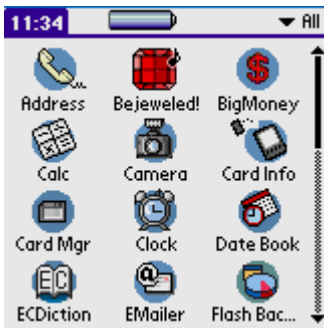
to select the style from the mobile phone or palm computer

**2.The original interface of the palm**

Tap the function menu and select the “exit navigation” to start the application.

Section 1: Introduction to Palm functions

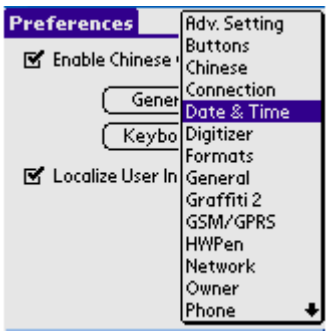
9. Setting date, time and time zone



To return to the GSL interface, you can enter the main interface screen and tap on the GSL launcher icon.

9. Setting date, time and time zone

Enter the “system” screen, tap the “preferences”, then select from the options available from the drop menu, tap the “date/ time”.

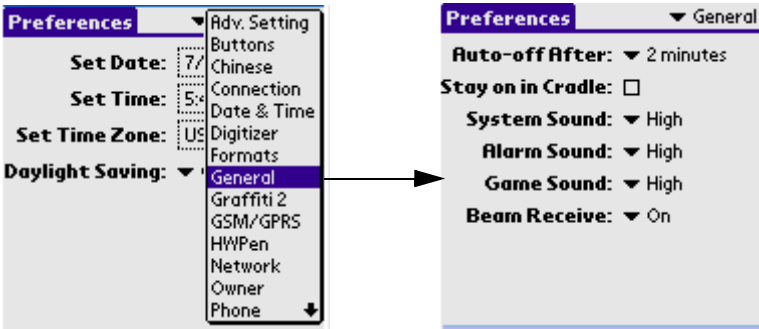


- Note: you need to set the time zone.



## 10.Setting Sleep Mode

Go to “preferences setting” screen, from the drop menu, tap the “ general setting” option.



In the general setting screen, the options available are:

- sleeping state:thirty seconds to three minutes
  - system sound
  - alarm sound
  - game sound
  - beam receive
- When you use the mobile phone,you can tap the “sleep mode” option to start the sleeping state.

## 11.Setting alert sound and volume

- To set alert sounds and volume, select the “alarm sound” in the “General” settings option of the “preferences screen”

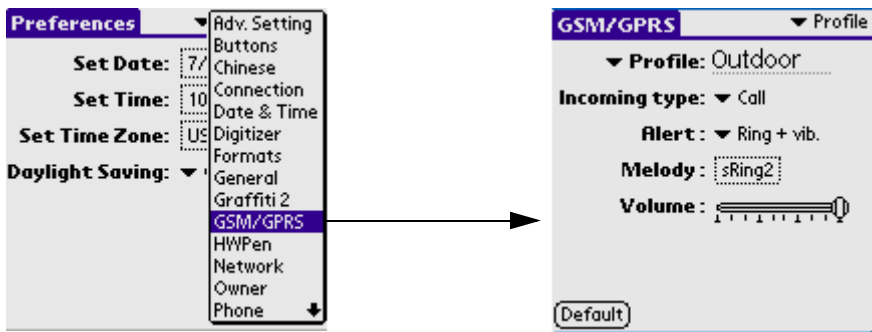




## Section 1: Introduction to Palm functions

### 12.Setting system interface language

- To personalise your phone ringtone settings, go to “ GSM/GPRS” option, select “Profile”



adjust the calling volume from the left button

## 12.Setting system interface language



## Section 1: Introduction to Palm functions



### 12.Setting system interface language

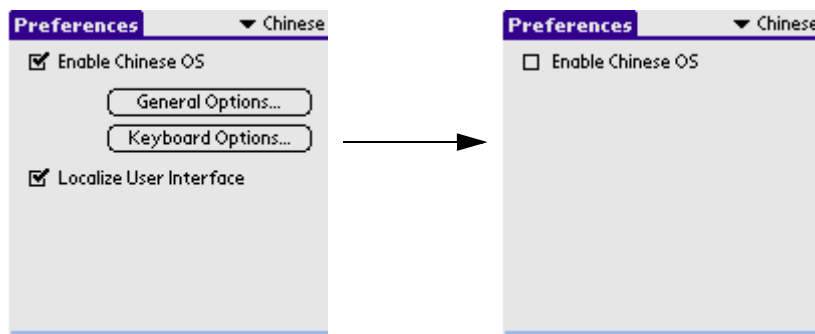
---

Setting the language from English to Chinese

- Select “Chinese” option from the drop menu.
- Select the “Enable Chinese OS” option.
- Tap the “General” option



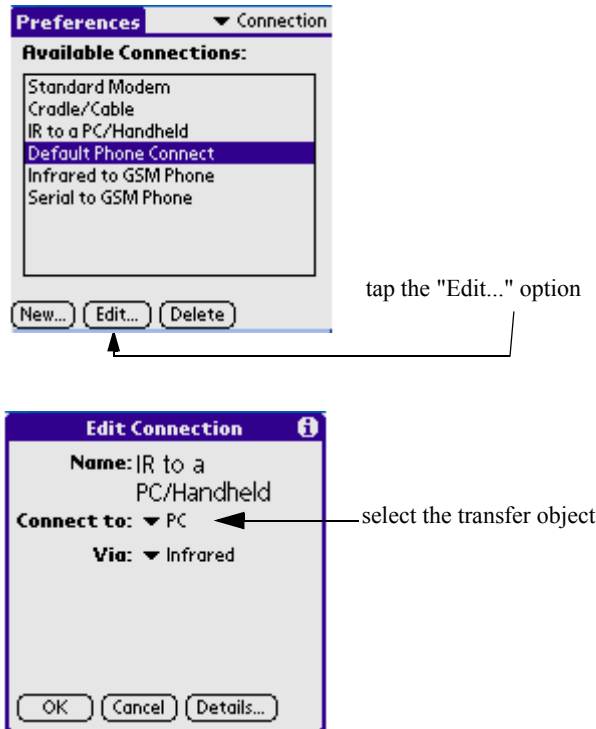
- Select the simple Chinese font, and top “OK” option.
- Tap the  icon to complete the system language change.
- Note: If the system language is changed to the simple Chinese font, it will change the language of the “input by hand area” option and browsing the SMS and WAP from English to Chinese.
- Delete the  $\circ\times$    $\circ\pm$  flag in the “start the Chinese system” option.



- Tap the  icon.

## 13.Setting up phone to phone IRDA data transfer

-Select the "connection".



- For data transfer using "IrDA Beaming". You could first shift to the "Application Interface", then tap the icon of the "function menu" at the bottom, select "Beaming".
- Beaming Album with infrared

Shift to "PhotoAlbum" application, select an album which you want to beam. tap the "function menu" icon, then tap "Beaming the Album..." at the dropdown menu.

## 14.GPRS/communication setting

- Enter into the "Prefs", and select "Network"
- select "GPRS" in the "Connection" menu

# Section 1: Introduction to Palm functions

## 14.GPRS/communication setting

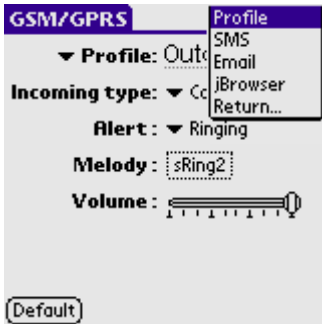
- Input relational information at the "APN" field ( you can get the information from the Network master builder )



- Tap on "Details..." to key in required data. Check "Query DNS" ,and check "Automatic" at IP Address.



- Tap the "OK" button to return,then tap the "Connect" button.
- Once GPRS setting is done, window will close. Email setting is automatically done.
- At the "Preferences" screen, select "Connection" from the drop menu.



Or select option here

- Email
- SMS
- jBrowser
- wait for account infor-
- mation

## 15. Using the onscreen keyboard

You can open the onscreen keyboard anytime you need to enter text or numbers on your G18.

### *To use the onscreen keyboard:*

- Open any application (such as the Address Book).
- Tap any record, or tap New.
- Choose one of the following to display the alphabetic or numeric keyboard:
- Tap abc on the front panel of your G18 to display the alphabetic keyboard.
- Tap 123 on the front panel of your G18 to display the numeric keyboard.



- To display the international keyboard, tap either abc or 123 on the front panel of your G18, and then tap Int'l at the bottom of the keyboard display.

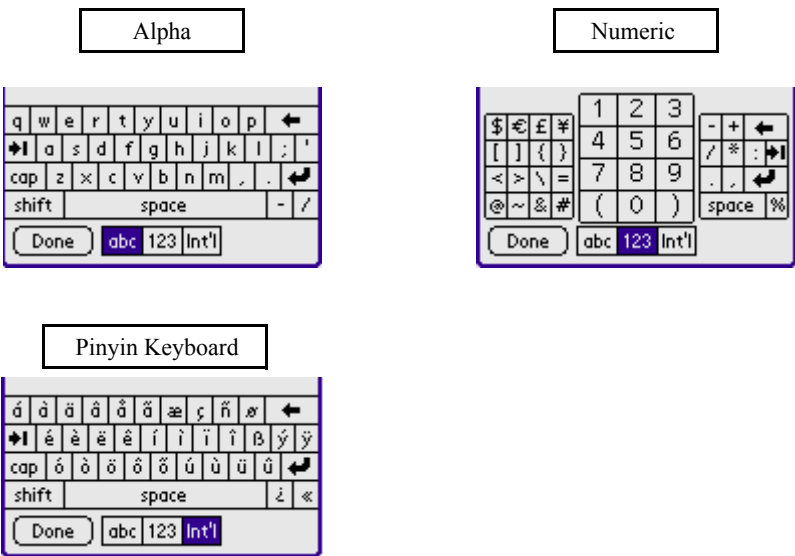
---

**TIP:** Some characters have two different stroke shapes. You can select either as you want.

---

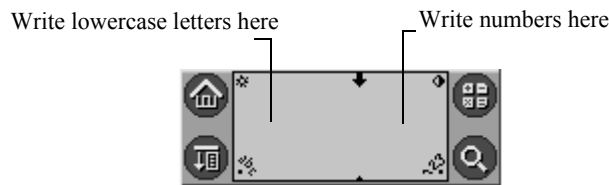
Section 1: Introduction to Palm functions

15. Using the onscreen keyboard



- Tap the desired characters or numbers; then tap Done to enter the text or numbers.

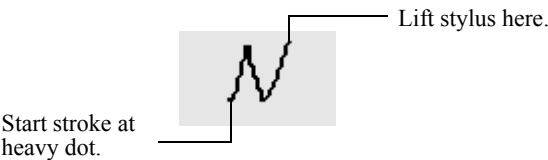
Using Graffiti 2



- Tap the screen where you want to write text

**TIP:** Some characters have two different stroke shapes. You can select either as you want.

- Use the tables on the following pages to find the stroke shape for the letter you want to write. For example, the stroke shown below creates the letter *n*.

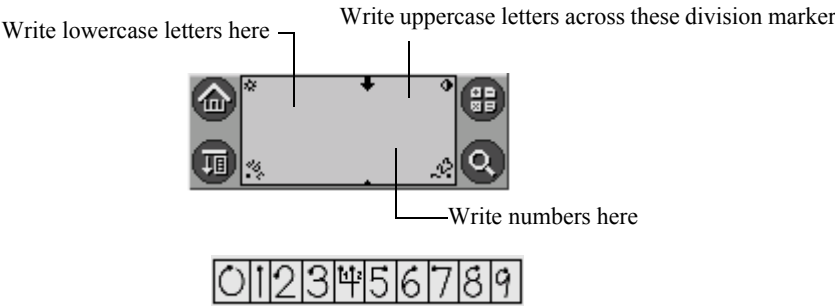
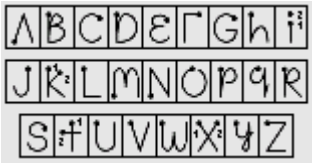


## Section 1: Introduction to Palm functions

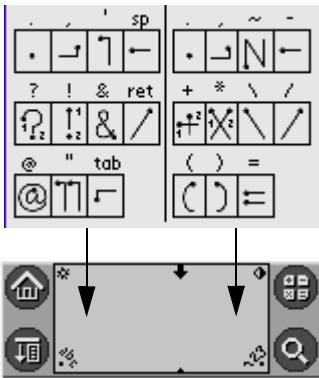
### 15. Using the onscreen keyboard

#### The Graffiti 2 alphabet

Draw Graffiti 2 letters according to the following alphabet.



#### Writing punctuation marks and other special characters



**TIP:** Using an additional Shift stroke to finish writing the character (as shown in the demo) is optional, it will make the character appear more quickly.

## Graffiti 2 tips

When using Graffiti 2 writing, keep the following tips in mind:

- For greater accuracy, draw letters with large strokes; strokes that nearly fill the text input area are easily interpreted.
- To delete characters, set the insertion point to the right of the character you want to delete, and draw the Backspace stroke (a line from right to left) in the text input area.
- Write at natural speed. Writing too slowly can produce errors.
- Do not write at a slant. Keep vertical strokes parallel to the sides of the text input area.
- When letters and numbers can be written using two different strokes, use the one that's easiest for you.
- Press firmly.

## 16.Installing add-on applications

Many applications such as Date Book, Address Book, To Do List and Note Mail are pre-installed for your convenience, you can use them without extra installation.

You can install other applications into your Palm computer such as games and other software.

Install Tool makes the installation easy when you are using Hotsync. Many third-party applications can also be installed in the Palm OS G18.

**1.From your computer desktop, copy or download the applications you want to install into the add-on folder in your Palm Desktop directory.**

---

**Note:** If the application is compressed, for example, \*.zip file, uncompress the application into the add-on folder before continuing. To save your application to other directories, browse to that directory before you finish step 5. Double-click the Palm Desktop icon on your computer desktop to open it; then click Install.

---



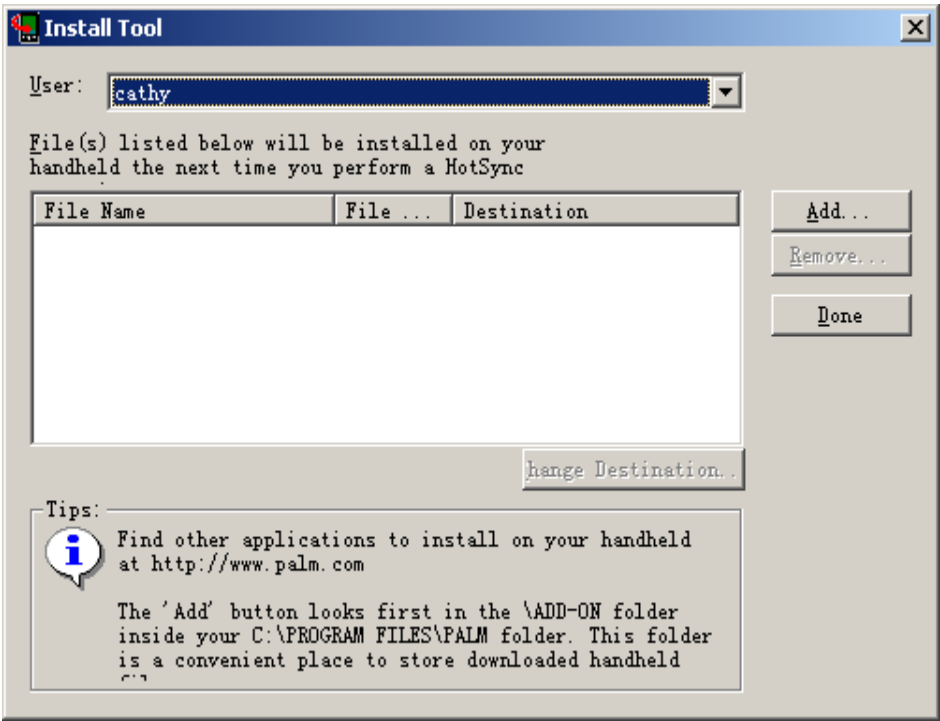
**Section 1: Introduction to Palm functions**  
*16.Installing add-on applications*

---



**TIP:** You can also select the Install Tool dialog box by selecting Install Tool from the Palm Desktop program group or by double-clicking any file with a PRC file extension.

---



- 2.In the User drop-menu, select the user name that corresponds to your G18; then click Add.
- 3.Select the application that you want to install on your phone; then click Open.
- 4.Then return to the Install Tool interface and tap "Done".

## 17.Removing applications

You can remove add-on applications, patches and extensions from your G18 if you run out of memory or no longer need them.You cannot remove the built-in applications that reside in the ROM portion of your device.

Tap the Applications icon; Tap



Open the  
function menu

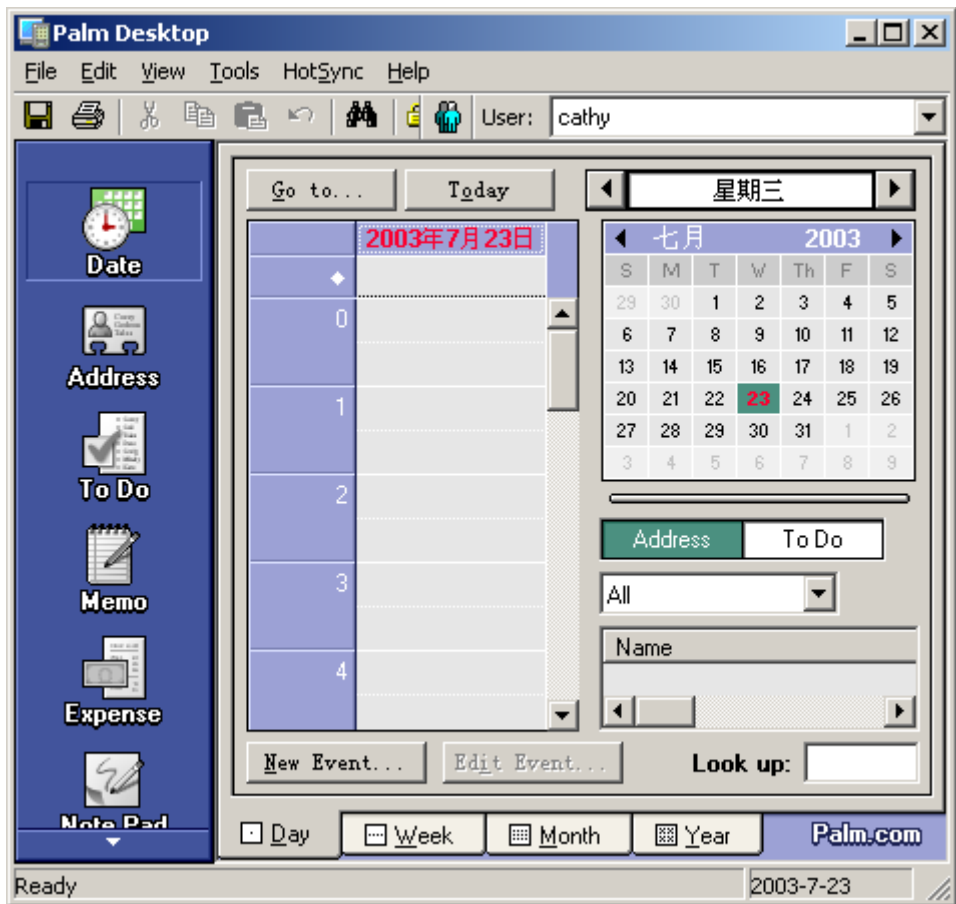
tap Delete.

1.tap the application you want to remove,Select the data storage, for example selecting “Handheld“.



2.Select about App, Tap Delete.

## 18.HotSync Setting



## Section 1: Introduction to Palm functions

### *18.HotSync Setting*

---

*To create a user profile:*

- 1.Open Palm Desktop.**
- 2.From the Tools menu, choose Users.**
- 3.Click Profiles.**
- 4.Click New.**
- 5.Enter a unique name for the profile, and click OK.**

*To use a profile for the HotSync operation first time:*

- 1.Connect your G18 HotSync cable to the computer serial port .**
- 2.Click the HotSync Manager icon in the Windows system tray.**
- 3.Click Profiles.**
- 4.Select the profile that you want to load on the G18, and click OK.**
- 5.Click “Yes” to transfer all the profile data to the G18.**

The next time you perform a HotSync operation, Palm Desktop prompts you to assign a user name to the G18.

### **Selecting HotSync setup options**

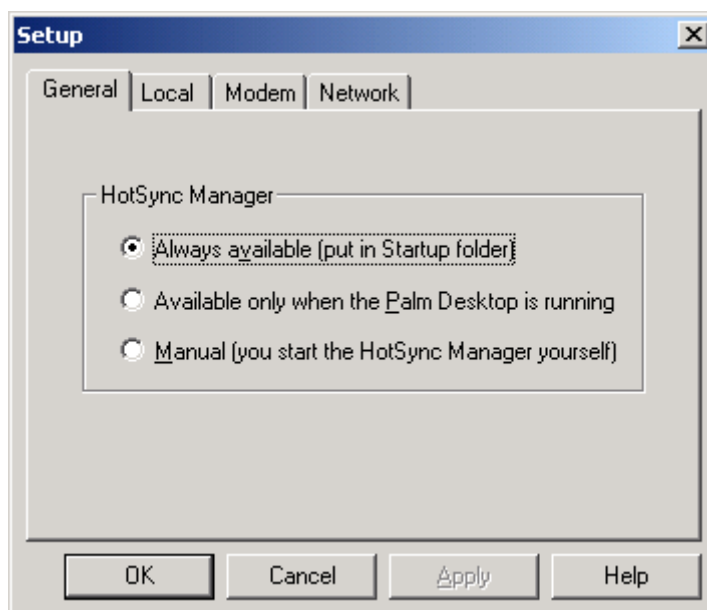
You can choose when you want HotSync Manager to run. You can adjust Hotsync options on the local machine and the modem at the same time.

- 1.Click the HotSync Manager icon in the Windows system tray.**
- 2.Choose Setup.**
- 3.Click the General tab, and select one of the following options:**

## Section 1: Introduction to Palm functions

### 18.HotSync Setting

---



- “Always Available” adds HotSync Manager to the Startup folder and constantly monitors the communication port for synchronization requests from your G18. With this option, the HotSync Manager synchronizes data even when Palm Desktop is not running.
- “Available Only When Palm Desktop Is Running” starts HotSync Manager and monitors requests automatically when you open Palm Desktop.
- “Manual” monitors requests only when you select HotSync Manager from the Start menu.

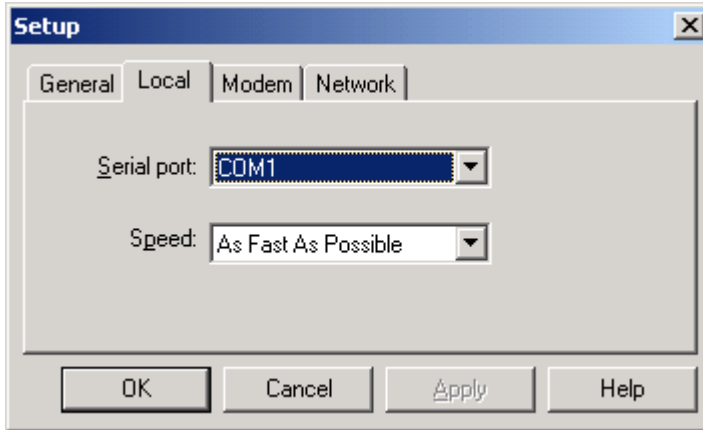
If you are not sure which option to use, keep the default setting, “Always Available”.

**4. When using the serial port, click the Local tab to display the settings for the connection between your computer and the G18 cradle. You may adjust the options to suit your requirements.**

## Section 1: Introduction to Palm functions

### 18.HotSync Setting

---



- **Serial Port.** indicates which serial port is connected to the G18 by HotSync Manager. The Palm Desktop installation software will detect the serial port automatically.
- **Speed.** Indicates the transmitting speed between the G18 and the software of Palm Desktop. Try the "As Fast As Possible rate" first, and adjust downward if you experience problems. This setting allows Palm Desktop and your G18 to find and use the fastest speed.

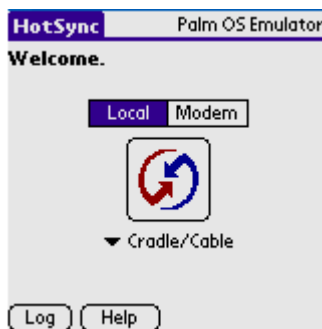
5. Tap "Modem" tab to display the modem settings, the settings are user definable.

6. For network connection settings, tap "Network" tab to display the settings.

7. Tap "OK" after completion of settings.

8. Connect the PC to your G18 with the HotSync cable.

9. Select "HotSync" from "system".



10. Select "Local" or "Cradle/Cable".

11. Then tap the "HotSync" icon



## 19.IR HotSync operations

Your G18 is equipped with an infrared (IR) port that supports the IrCOMM implementation of the standards for infrared communication established by the Infrared Data Association (IrDA). This means that you can beam data to any other device that supports the IrCOMM implementation of the IrDA standards. Most importantly, you can use the IR port to perform HotSync operations. You don't need a HotSync cable to do this. This is very useful if you travel with an infrared-enabled laptop. You simply enable infrared communication on your laptop and G18 and follow the steps in [“Performing an IR HotSync operation”](#) later in this section.

### Preparing your computer for IRDA communication

Before you can perform a HotSync operation using the IR port, the computer you want to synchronize with must meet the following requirements:

- The computer must support the IrCOMM implementation of the IrDA standards.
- The computer must have an enabled infrared port built-in, or an enabled infrared device attached to the computer. Desktop computers are likely to require an infrared device attached to a physical COM port. Laptops are likely to have a built-in IR port.
- Your desktop computer will need to have an installed driver for the external infrared device. For driver installation, please browse the user manual of the IR device.

Please also check the manual of your computer and determine whether your computer supports infrared communication.

### Configuring HotSync Manager for IRDA communication

The HotSync Manager now needs to be configured and the port specified for infrared communication.

## Section 1: Introduction to Palm functions

### *19.IR HotSync operations*

---

#### ***To configure HotSync Manager for infrared communication:***

- 1.Click the HotSync Manager icon in the Windows system tray. Make sure "Infrared" option is selected.If you can't see "Infrared" option in the function list of HotSync Manager,please follow the steps as bellow.
- 2.Make sure "Local Serial" is checked on the menu.
- 3.Choose "Setup".
- 4.Click the "Local" tab.

**In the Serial Port drop-menu, select the COM port that was given as the simulated port in the Options tab of the Infrared Monitor.**

### **Performing an IR HotSync operation**

After you complete the steps to prepare for an IR HotSync operation it is easy to perform the actual operation.

#### ***To perform an IR HotSync operation:***

- 1.In the Applications Launcher, tap the HotSync icon.
- 2.Tap "Local".
- 3.Tap the pick list below the HotSync icon and select IR to a PC/Handheld.
- 4.Position the IR port of your G18 within a couple of inches of the infrared port of your computer.
- 5.Tap the HotSync icon to start the IR HotSync operation.

### **Using HotSync cable for HotSync operations**

It's easy to return to use the HotSync cable for HotSync operations.

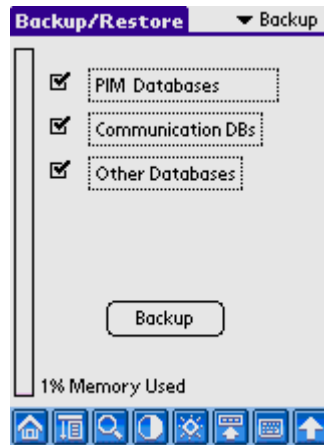
#### ***To return to HotSync cable synchronization operations:***

- 1.Connect the HotSync cable to a serial (COM) port on your computer.
- 2.Click the HotSync Manager icon in the Windows system tray.
- 3.Choose Setup, and then click "Local."
- 4.Select the COM port where your HotSync cable is connected.
- 5.Click "OK".

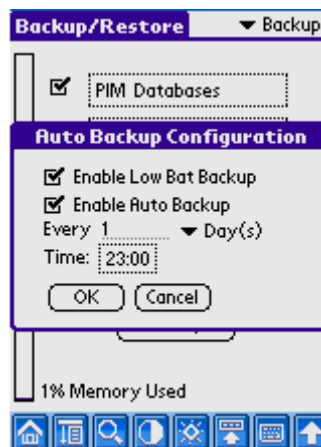


## 20.Flash BackupMan

- Enter the "system", tap "Flash BackupMan".



- Tap the function menu, tap "Preferences..." from "Options".
- Check "Enable Low Bat Backup" and "Enable Auto Backup".



- Select the backup time as you require in the "Time" field.
- Tap "OK" button to return the "Backup/Restore" interface, select the data to backup from "PIM Databases", "Communication DBs" or "Other Databases".
- When you want to backup data, assure that the item of the right top metu is "Backup", then tap the "Backup" button at the bottom of the interface.

## 21.Data transfer from other Palm terminals

After the installation of Desktop ,please pay attention to what is below:

If you are a fresh user, you can skip the following steps; if you are a former palm OS user and you are using a G18 for the first time, use a new user name at the Desktop, you can skip the following steps. But if you want the data to be transferred from the previous database to G18, please follow the methods and steps as below:

### Method 1:

Synchronize using the previous Desktop user name and G18 directly. But there is a note that the phone can't be synchronized with the Desktop user any longer. The detail of the steps is what as below:

1) Backup the user data.

For every Desktop user, the Palm Desktop will create a directory in the installed directory. The directory, which stores all the user data, is known as the user directory. For example, if the user name is Jack,and the installed directory is "C:\Program Files\Palm",then the user data is stored at the directory "C:\Program Files\Palm\Jack". Please backup all of the data in the user directory to other directory, any other directory besides the new user directory.

2)Delete all of the files in the Backup directory which is under the user directory.

Note: Some documents in the Backup directory may possibly only be usable by the previous phone, it is relative with the hardware and any particular system software of the previous phone. Downloading them to other incompatible phone or G18, may result in abnormal running of the phone. In this case , please use method 3.

3) Synchronize.

## Section 1: Introduction to Palm functions

### 21.Data transfer from other Palm terminals

---

#### Method 2(recommended):

If you want to use G18 and the phone at the same time, take following steps:

1) Synchronize G18 with the Desktop,and create a new user. At the first synchronization between G18 and the phone,a dialogue as is shown in Figure 1 will open, tap the "New..." button, input the new username such as "user2" in the pop-up dialogue. After the first synchronization,the Desktop will create a user directory "user2" in the installed directory,and store information used for synchronization in the user directory,as is shown in Figure 2.

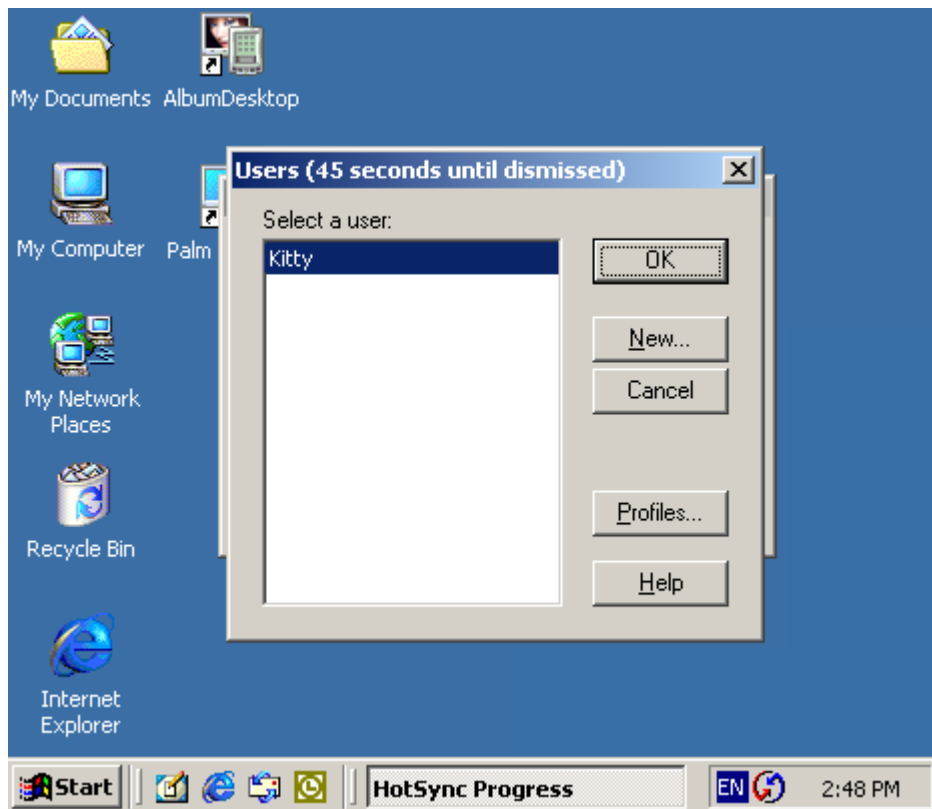


Figure 1

## Section 1: Introduction to Palm functions

### 21.Data transfer from other Palm terminals

---

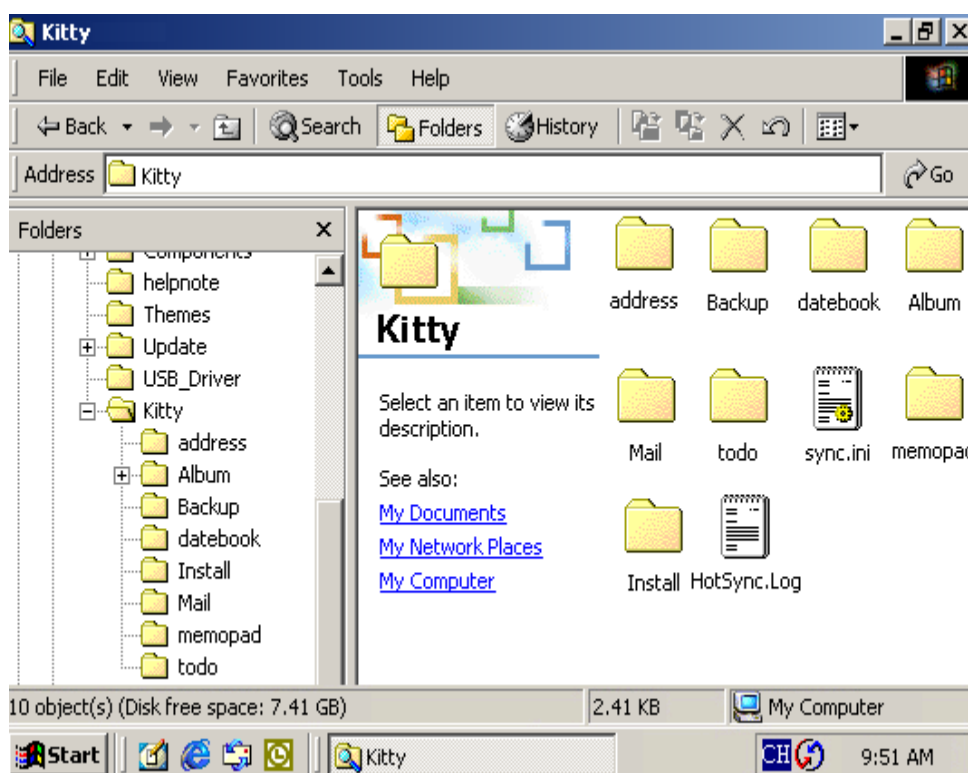


Figure 2

2) Copy the required information to the new user directory from the former user directory.

In the user directory, the address subdirectory is for the address list information, datebook subdirectory for schedule

information, memopad subdirectory for memoire directory, todo subdirectory for the to do matter. Expense subdirectory for personal financing record, Album subdirectory for photos.

3) Set the Synchronize Option of relative documents to "Handheld overwrites Desktop".

Start Hotsync Manager in your PC.Tap Star->Program

->Palm Desktop->Hotsync Manager,after the start of Hotsync Manager,a system icon will be seen at the right bottom of the screen. Tap the icon with the right button of the mouse, select "Custom..." item from the pop-up

# Section 1: Introduction to Palm functions

## 21.Data transfer from other Palm terminals

list,as is shown on Figure 3. Thus the "Custom" dialogue box will open, you can change the synchronize option in this box, as is shown on Figure 4.First tap the drop down list in the top of the box and select the username, then select the information whose synchronize option need to be changed from the left list, tap the "Change..." button, finally select the "Handheld overwrites Desktop" option from the pop-up dialog box and tap "OK" to change the synchronize option.

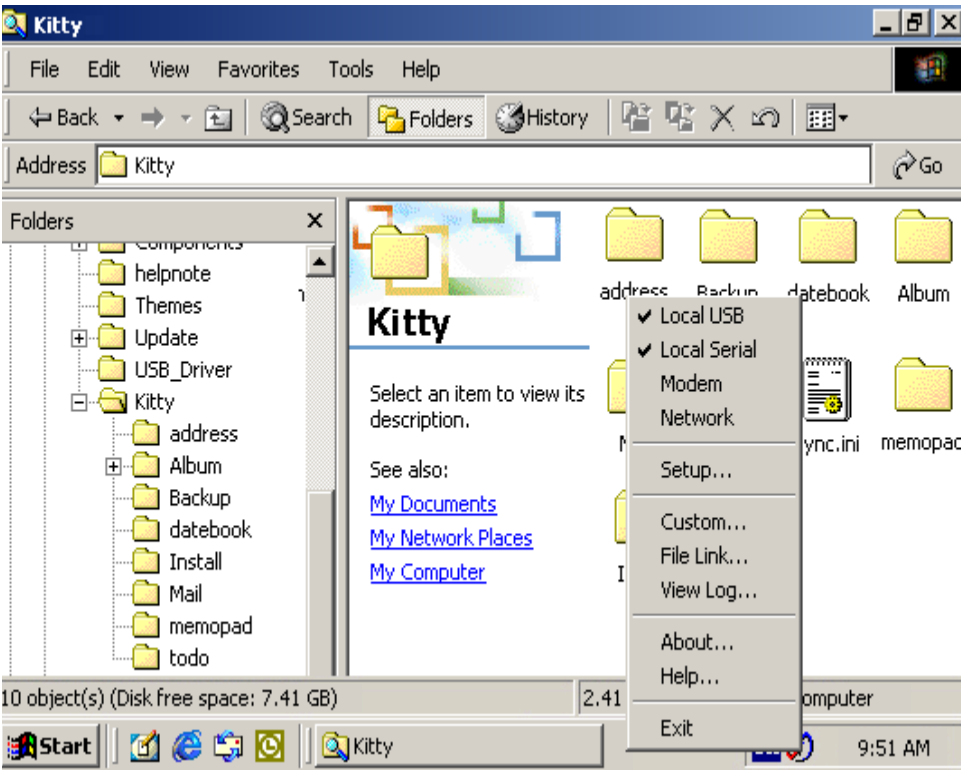


Figure 3

## Section 1: Introduction to Palm functions

### 21.Data transfer from other Palm terminals

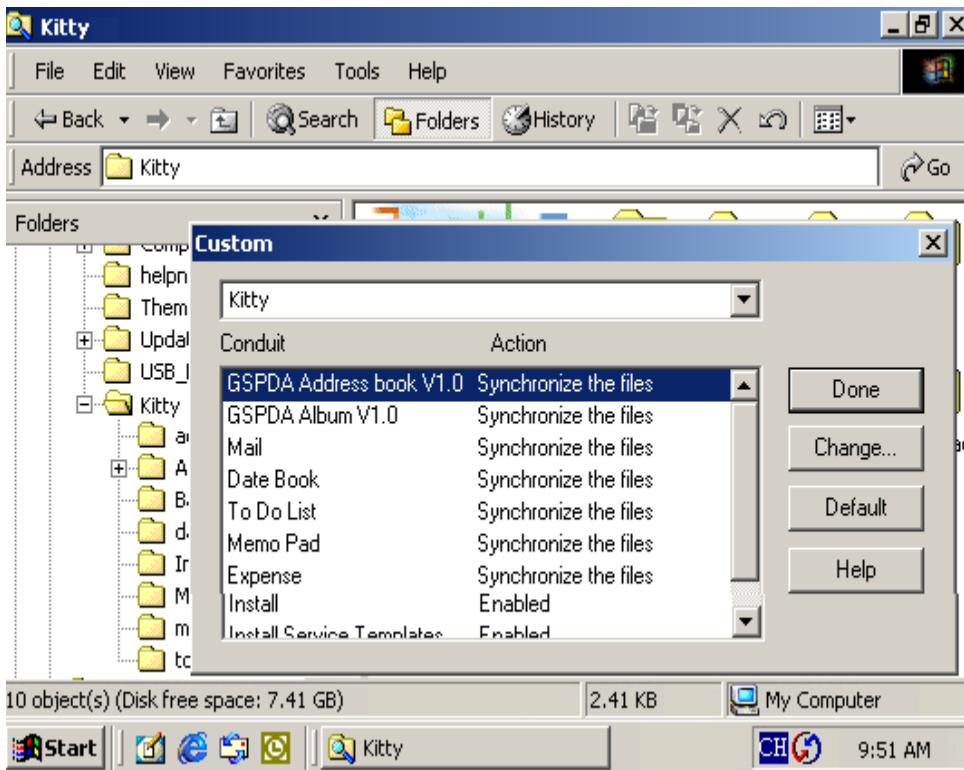


Figure 4

4) Synchronize again.

### Method 3:

If you are familiar with the existing phone, please follow the following steps:

- 1) Take step 1 as method 1.
- 2) Delete the files which you think can be deleted and the files which can only be used in the previous model from the Backup directory.

Note: Some documents in backup directory can only be used in the previous model of phone and G18. These may be particular to the hardware and the system software of the phone. Downloading documents incompatible with the phone or G18, may result in the abnormal running of the phone.

3)Hotsync.

# Section 2 : Communication and PDA Features

---


## 1. Using the Phone

### To launch the Phone application

The telephone function can be activated by

1. Tap the Applications icon .
2. Select Communication from the pick list in the upper right corner; then tap the Phone icon.

---

**TIP:** Alternatively, you can press the Call key  to activate the telephone function.

---

## Section 2 : Communication and PDA Features

### 1. Using the Phone

#### Function Key



**TIP:** If your mobile provider is "CHINA MOBILE", The CMCM window should display "CHINA MOBILE", and if your mobile provider is "CHINA UNICOM", The CMCM window should display "CHINA UNICOM". The network indicator that on the top right corner should display "GPRS", if you link the "GPRS" service.



## Section 2 : Communication and PDA Features

### 1. Using the Phone

---

#### Making a call



1. Tap Numeric keyboard(0 ~ 9, \* and # ) to key in telephone numbers.

2. Press the Call key  to dial the numbers.



## Section 2 : Communication and PDA Features

### 1. Using the Phone

#### 3. After the call is connected:



- Press the End Call Key  to end the call.

## Receiving a call

1. When receiving a call, you will see the incoming call number on screen.



**TIP:** Alternatively, the user can press the Call key to accept the call, while pressing the End Call Key to reject the call.

## Section 2 : Communication and PDA Features

### 1. Using the Phone

#### 2. When the call is connected :

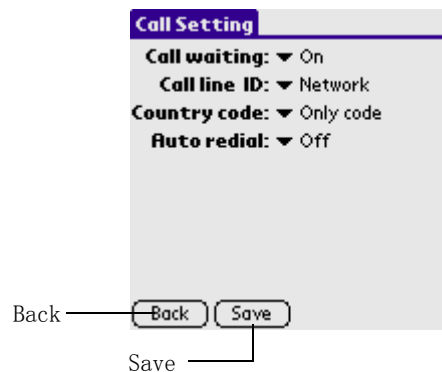


- Press the End Call Key  to end the call.

## Call Setting

1. Tap the Menu icon .

2. Select Call > Call Setting.



#### a. Call Waiting

## Section 2 : Communication and PDA Features

### 1. Using the Phone

**Call Setting**

Call waiting: On

Call line ID: Off

Country code: ▼ Only code

Auto redial: ▼ Off

Back Save

- On to enable
- Off to disable

#### b. Call line ID

**Call Setting**

Call waiting: ▼ On

Call line ID: Network

Country code: ▼ Only code

Auto redial: ▼ Off

Back Save

- Network: Determined by GSM network
- Display: Select to display the Call line ID
- Hide: Select to hide the Call line ID

#### c. Country Code Setting

- Only code: Add a region code only
- "+" and code: Add a letter '+' before region code

#### d. Auto redial

**Call Setting**

Call waiting: ▼ On

Call line ID: ▼ Network

Country code: ▼ Only code

Auto redial: On

Back Save

- On to enable
- Off to disable auto redial function

## Section 2 : Communication and PDA Features

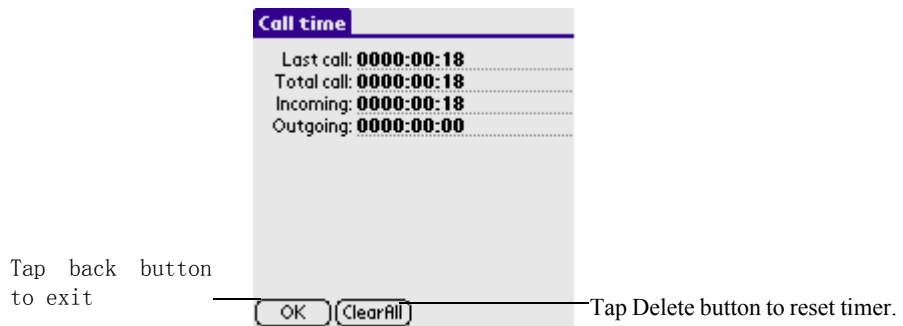
### 1. Using the Phone

3. When finished setting, Tap Save button to save the setting, then Tap Left Arrow icon to exit.

## Call Time

1. Tap the Menu icon .

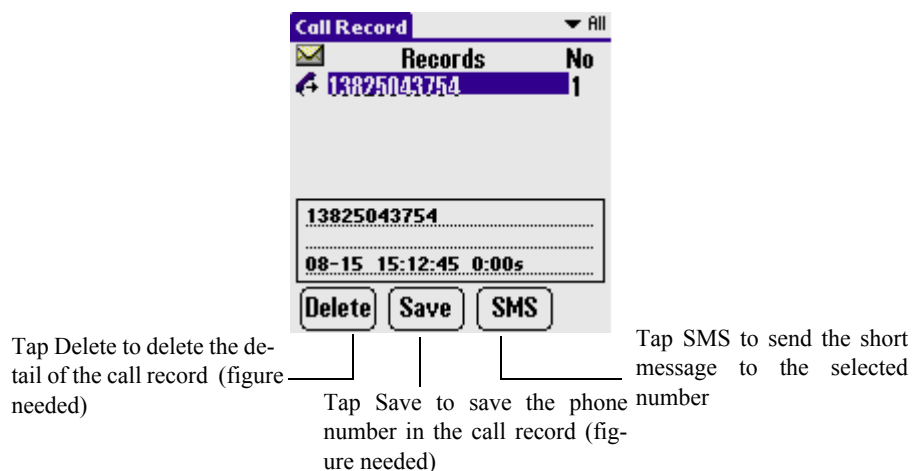
2. Select Call > Call Time.



## Call Records

1. Tap the Menu icon .

2. Select Call > Call Records.



**TIP:** In the call interface, you can press Call key to enter the call record interface directly.

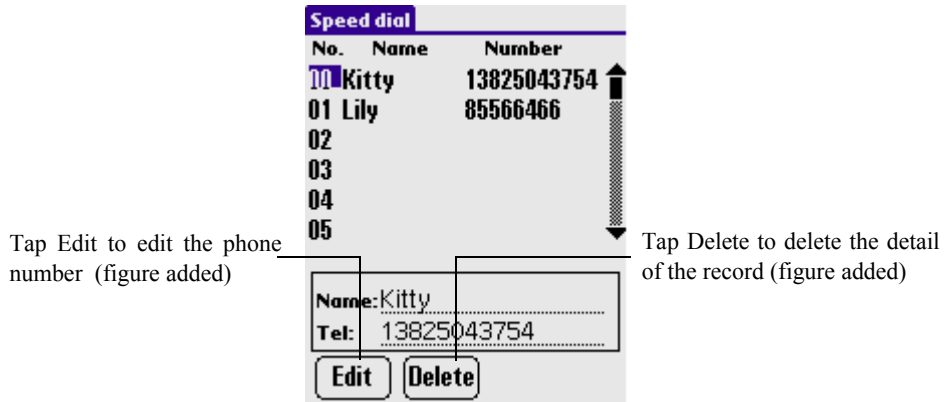
## Section 2 : Communication and PDA Features

### 1. Using the Phone

#### Speed Dial

1. Tap the Menu icon.

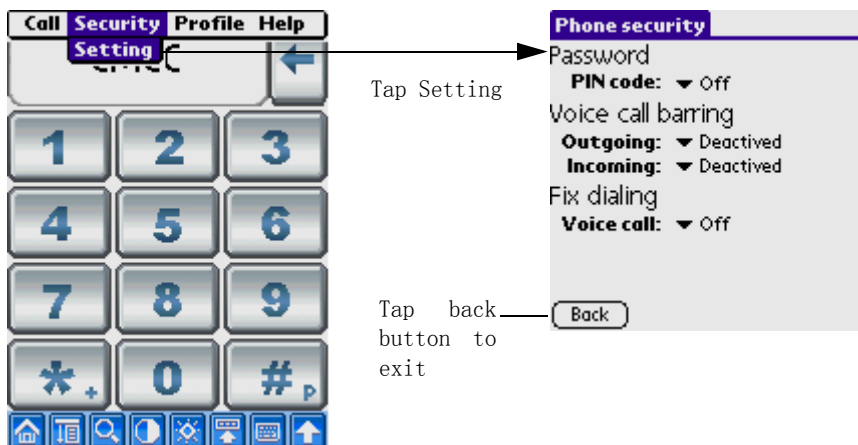
2. Select Call > Speed dial.



#### Phone Security Setting

1. Tap the Menu icon.

2. Select Security > Setting.



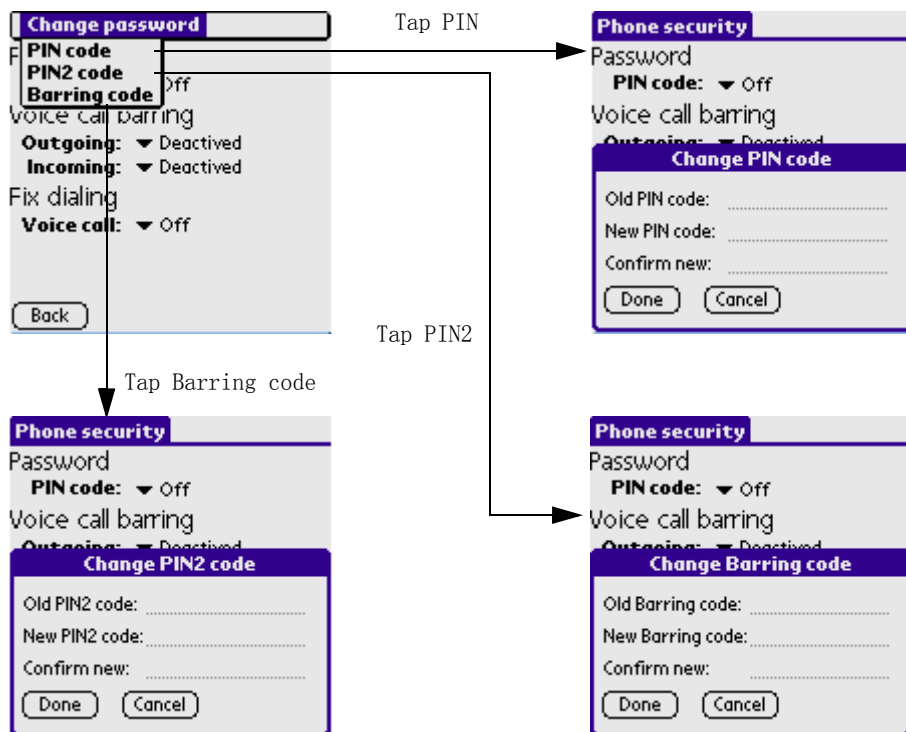
a. Changing PIN/PIN2/Barring Code

## Section 2 : Communication and PDA Features

### 1. Using the Phone

**WARNING!** Incorrectly entering your SIM PIN three times causes the SIM card to be blocked. To unblock your SIM card, you must contact your service provider and obtain the SIM PIN Unblocking Key (PUK) code from your service provider. If you unsuccessfully enter the PUK code ten times, the SIM card is permanently blocked and must be replaced. If this happens, all data will be lost. You have to purchase a new SIM card.

- Tap the Menu icon on front panel of your G18.
- Select Change password > PIN code / PIN2 code / Barring code to configure



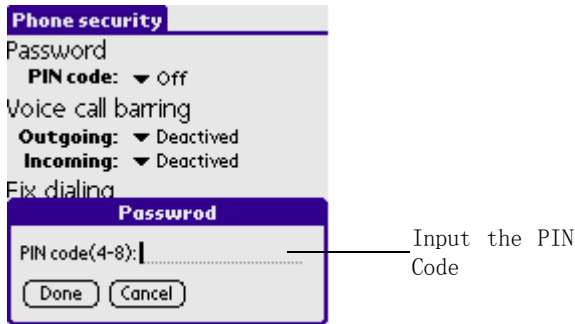
#### b. Setting

## Section 2 : Communication and PDA Features

### 1. Using the Phone

---

#### Enable/PIN Code



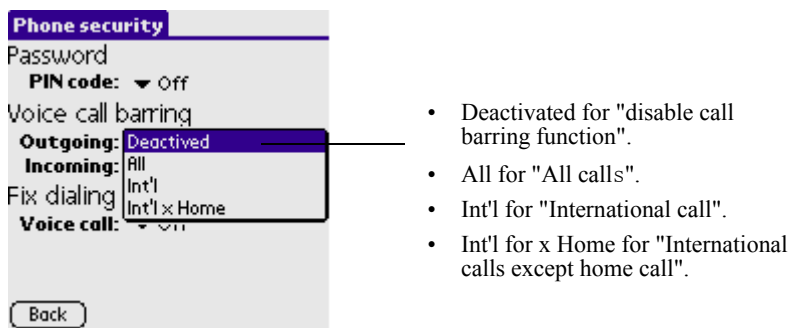
- Tap On from the pick list to enable the PIN Code.
- If the PIN Code has not been set, a dialog box will appear and ask you to set the PIN Code.

#### Disable PIN Code

- Tap Off from the pick list to disable the PIN Code.
- If there is an enabled PIN Code, a dialog box will appear and ask you to input the PIN Code.
- If your input is right, the PIN Code will be disabled.

#### Voice Call Barring

- Four types of setting are available for Outgoing item.

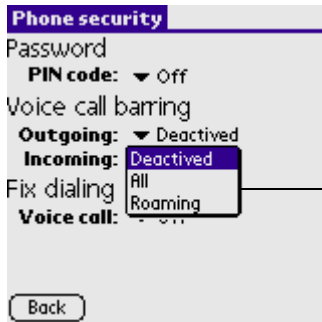


- Three types of setting are available for incoming item.



## Section 2 : Communication and PDA Features

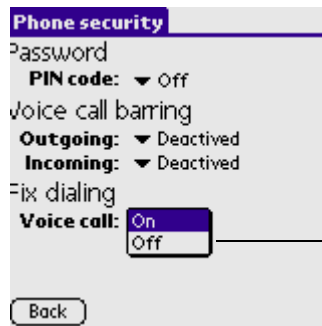
### 1. Using the Phone



- Deactivated means that accepting all incoming calls
- All means that blocking all incoming calls
- Roaming means that Barring function will be enabled when roaming

#### Fix Dialing

Select one of the following options in the Fix Dialing section:

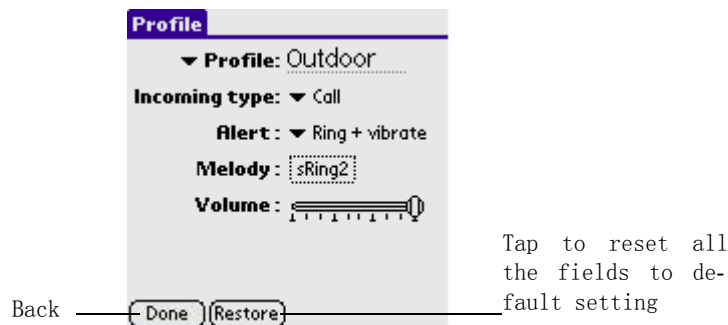


- On for enable.
- Off for disable.

3. Tap the Save button to save the setting.

4. Tap left arrow to exit.

### Phone ringing Setting



Tap to reset all the fields to default setting

#### a. Profile

Tap the Profile, you can find the following pre-defined profiles

## Section 2 : Communication and PDA Features

### 1. Using the Phone

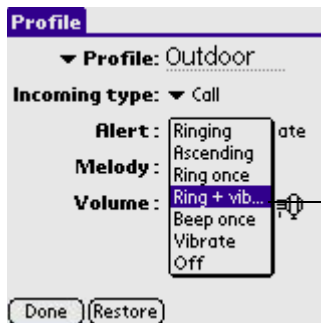


You can edit each profile as you like by changing any other section in this page

#### b. Incoming type

You can specify Call or Message as the incoming type for Alert, Melody, and Volume setting below

#### c. Alert



You can select the Alert style for incoming call and message

#### d. Melody



You can specify the melody for your phone, default is None for silence

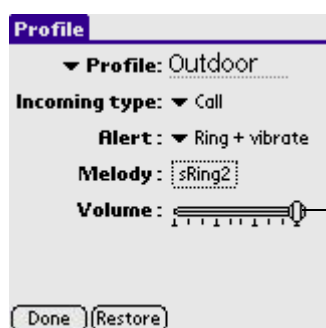


**NOTE:** You can pick up one of your favourite melody. For the usage of Melody, please refer to **User Manual in CD, Chapter 7 - Using the Melody Manager** for details.

## Section 2 : Communication and PDA Features

### 1. Using the Phone

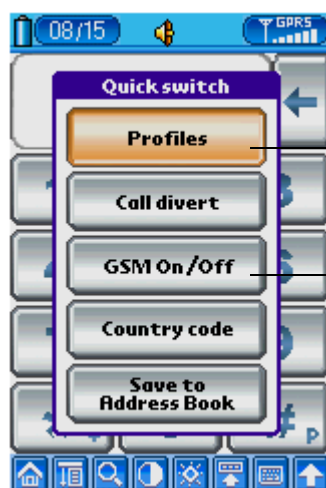
#### e. Volume



Tap on the volume bar to adjust the volume of the melody for your phone

## Quick Switch

Tap the Enter Key  in front panel of your G18, you can enter the Quick switch dialog. Than tap "GSM On/Off".



- Tap Address book button to enter Address application, you can pick up the phone number from the address book.

**NOTE:** For the usage of address book, please refer to **Chapter 9 - Using the Address Book** in this section for details.



## Section 2 : Communication and PDA Features

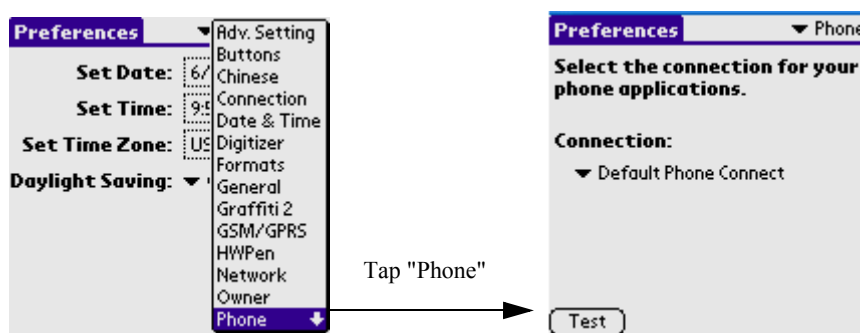
### 1. Using the Phone

- Tap Call record button to view the call record history list. Reference to the part of Call Record in this chapter.
- Tap Speed Dial button to pick up one phone number from Speed dial list. Reference to the part of Call Record in this chapter.
- Tap Return to quit to main view.

## Testing the Phone Connection

For the first time to use the telephone function, you may need to check and test the phone connection.

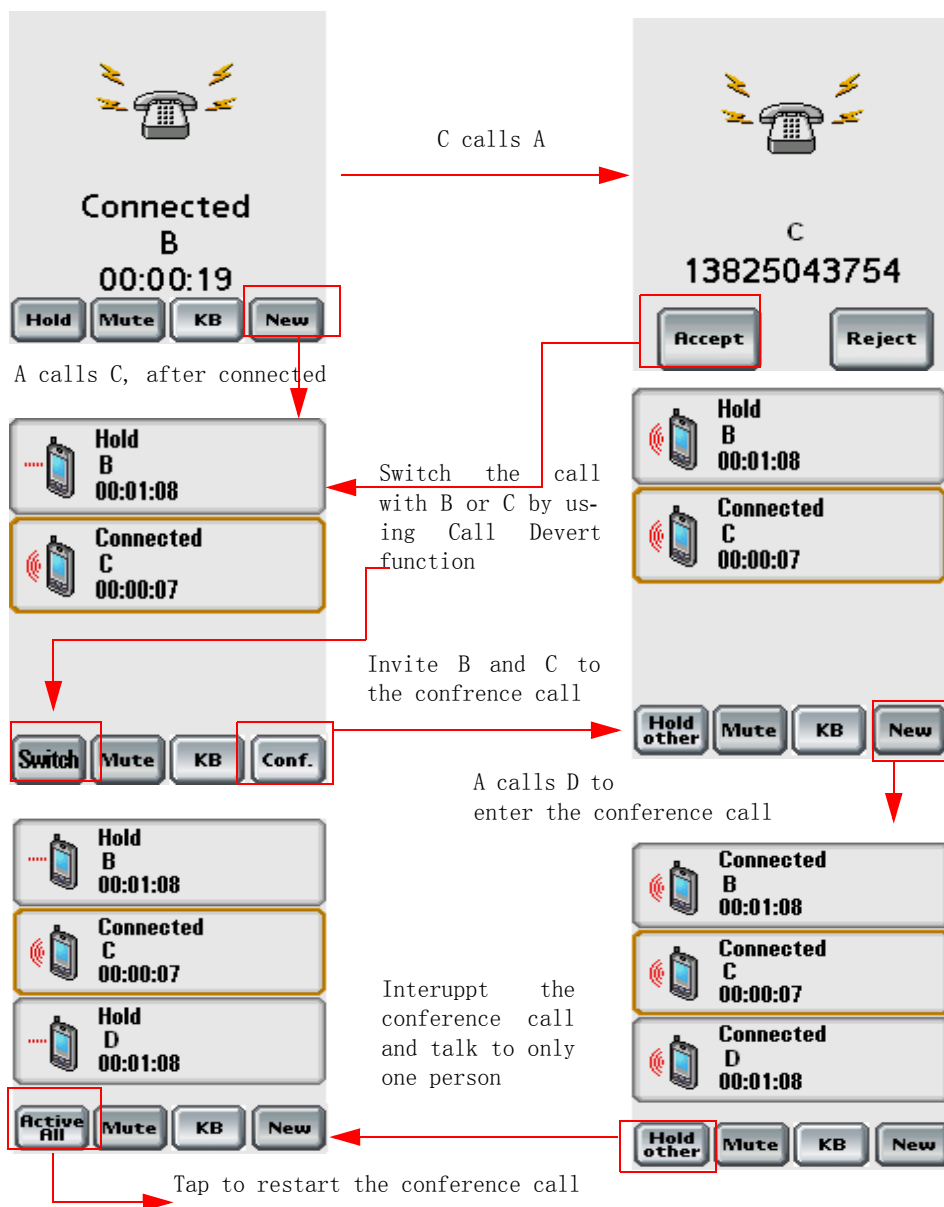
1. Tap the Applications icon .
2. Select System from the pick list in the upper right corner.
3. Tap the Prefs icon ; then select Phone from the pick list in the upper right corner.
4. For Connection, select Default Phone Connect.





5. Tap the Test button to launch the phone connection test.
6. Wait for a while, there will appear a dialog box to show whether it's ok or anything fails.
7. If the test is ok, you could try to launch the Phone application to call someone.
8. If the test fails, you might need to check whether the SIM or the other things go wrong.

## Conference call/ Call Divert



A calls B, after connected

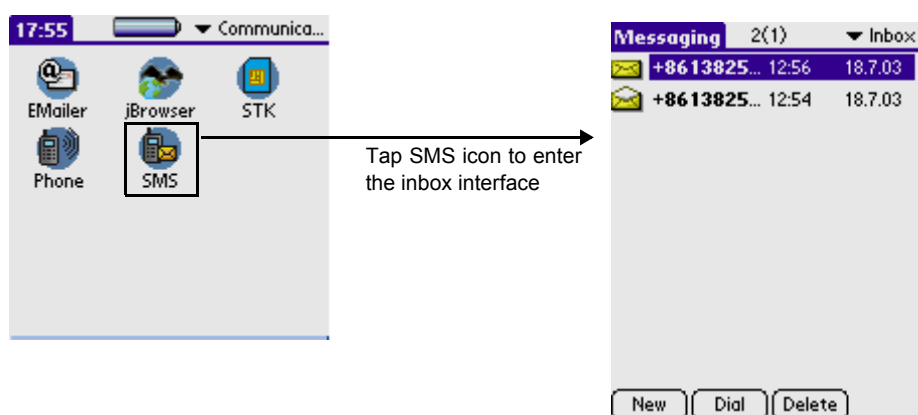


**Note:** Tap the , tap Call>Call Setting, select "On" in the "Call divert" option, then tap  to save your setting.


## 2. Using the SMS Short Message

### To launch the SMS application

1. Tap the Applications icon  .
2. Select Communication from the pick list in the upper right corner.
3. Tap the SMS icon  .



### SMS setting

In the main screen, which lists out Inbox messages by default, tap the Menu icon  on the front panel of your PDA phone, choose Tools > Setting to enter the setting interface.



## Section 2 : Communication and PDA Features

### 2. Using the SMS Short Message

#### Outgoing:

- Return Receipt:

Return a receipt when recipient got the message.

- Warn Over

You will get a warning when the SMS size is over the limitation.

- Expires

Set a period of time for which the message can be retained in the message center before you send it out.

- Message Center


Before sending any short message, you must input the short message service center number, which you can get from your service provider. The number can be recognized once the SIM card was inserted.

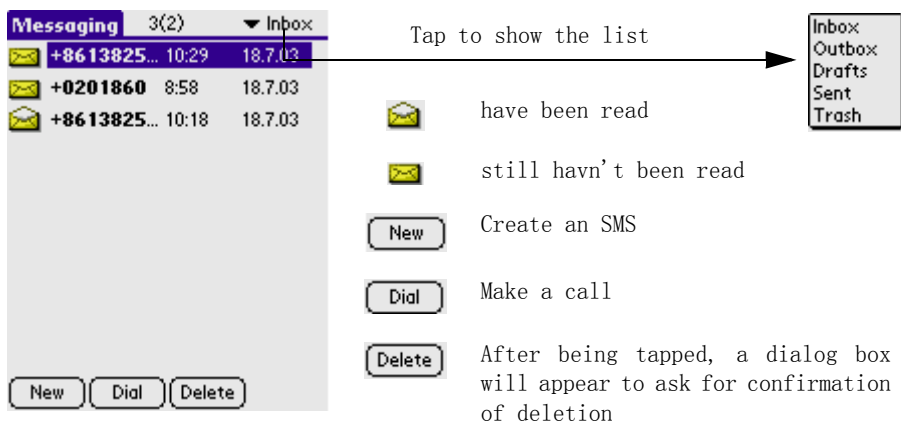
---

**NOTE:** If you change your SIM card, SIM only displays the short messages in the current SIM card.

---

## Writing SMS & Sending SMS


1. In the list view ( in SMS interface), tap the New button  to enter the editing interface.



## Section 2 : Communication and PDA Features

### 2. Using the SMS Short Message

---

2. Tap the Menu icon  on the front panel of your PDA phone, choose Edit > Keyboard to switch to keyboard entry. Now you can input number and the content of message. Once finished, tap Done button on keyboard and return to the message edited interface.

3. Tap the different icons to conduct respective functions, for example, tap Send icon to send the message.



Enter Address Book to select phone number



Send SMS, whatever success or not you will get a return message



Save to draft box



Return to previous interface

Tap "Send"



4. You can also set the font. Tap the function title. After the menu pops up, tap Font, and then select Set Font to complete the operation.

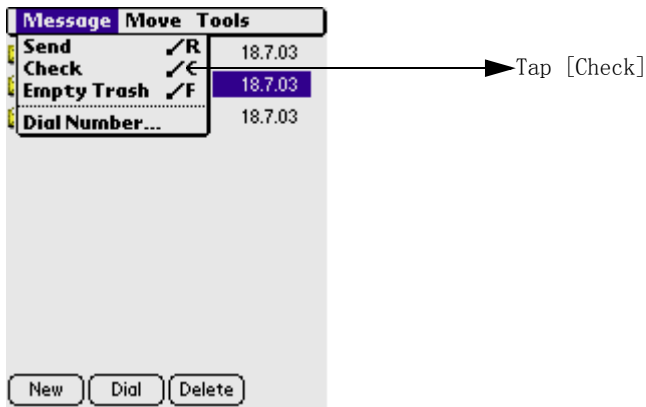
## Receiving SMS

If you receive a short message, it will automatically show a dialog box(it will appear a envelop icon). You can easily view its content. The short message may be stored in Inbox or SIM according to the preferred storage setting.



## Section 2 : Communication and PDA Features

### 2. Using the SMS Short Message



## Replying SMS & Forwarding SMS

1. In the list view, select proper records in the relative box.
2. Tap one record to enter SMS short message interface. You can do relative operation according to the prompt of icons.



- |  |  |
|--|--|
|  | answer the addresser   |
|  | forward the current SMS  |
|  | return to the previous direction   |
|  | After being tapped, a dialog box will appear to ask for confirmation of deletion |

## Deleting SMS

Delete the short message to dustbin.

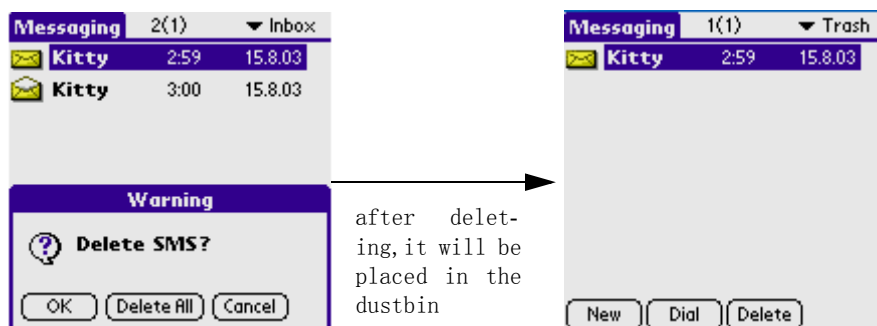
Select any of the message you want to delete.

Tap the DELETE button ,then appears a dialog box.

## Section 2 : Communication and PDA Features

### 2. Using the SMS Short Message

---

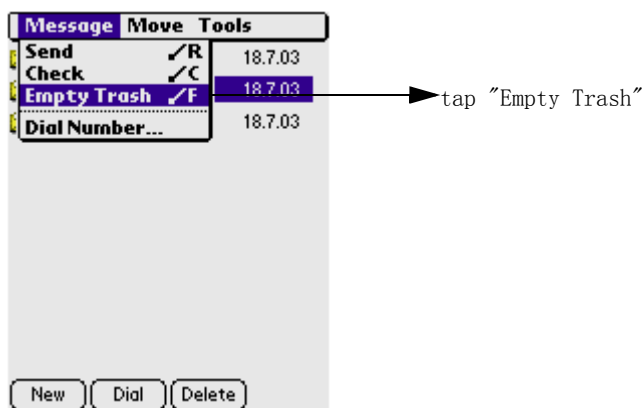


In the dialog box, tap the OK button, then delete the message; tap the Delete All button, then the all message in the directory will be deleted, tap the Cancel button, then cancel the operation.

Delete forever:



Tap the MENU icon, then a pick list will appear.

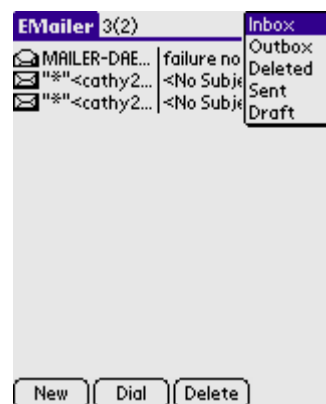
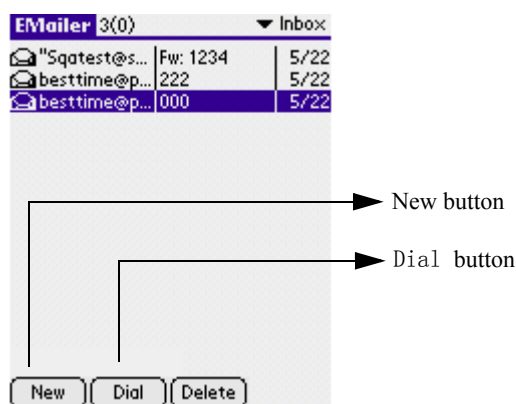
In the list, select the **Empty Trash**, then delete all the message saved in the dustbin.



## 3. Using the EMailer

### To launch the EMailer application

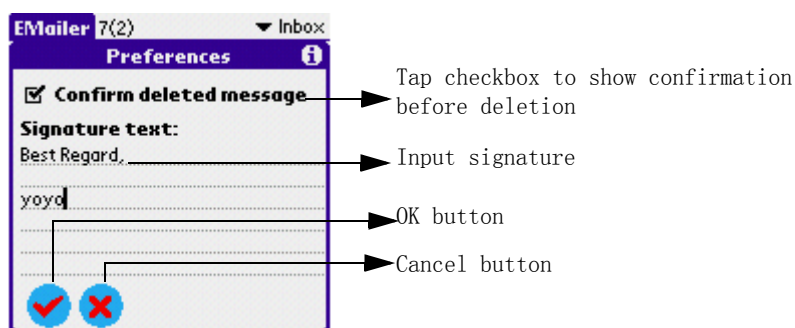
1. Tap the Applications icon  .
2. Select Communication from the pick list in the upper right corner.
3. Tap the EMailer icon  .



### Setting

On the main screen of EMailer(default is the index interface of the inbox), tap the Menu icon on the front panel of your G18, pop up the menu model(showing as the following).

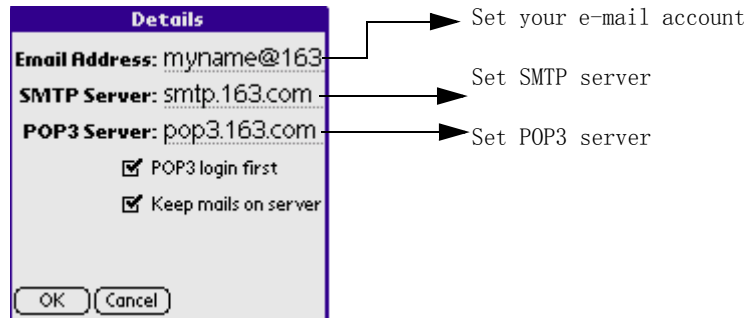
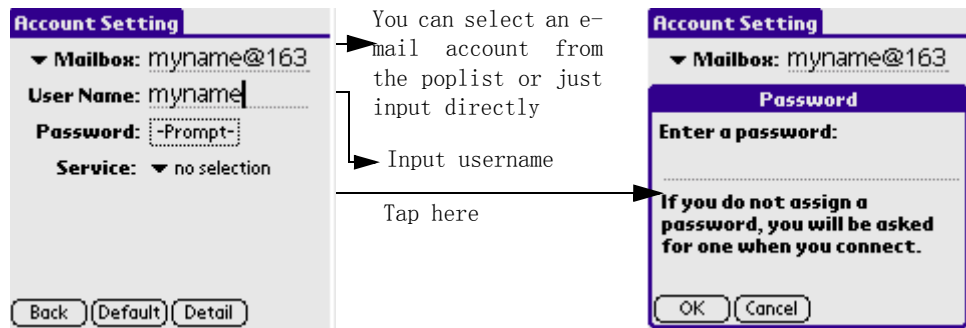
- 1) Choose Options > Preferences to set whether to give the confirmation, whether deleting the dialog box or signing your name.



## Section 2 : Communication and PDA Features

### 3. Using the EMailer

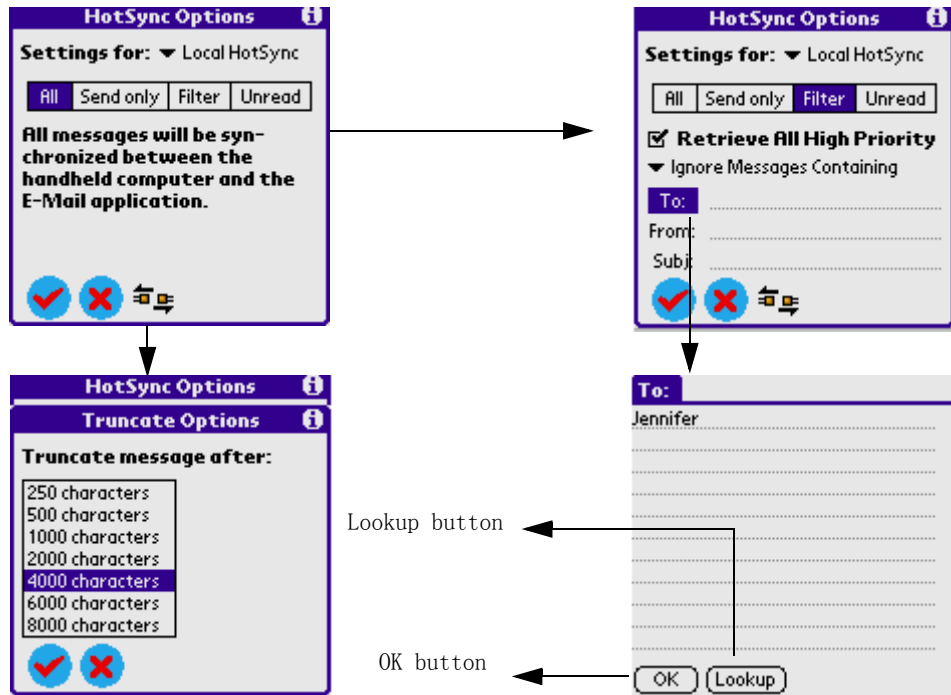
2) Tap Options > Accounts Setting to set your account's information.



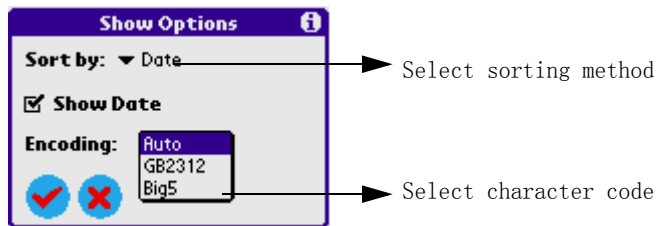
## Section 2 : Communication and PDA Features

### 3. Using the EMailer

3) Choose Options > HotSync Options to set local synchronization or remote synchronization.

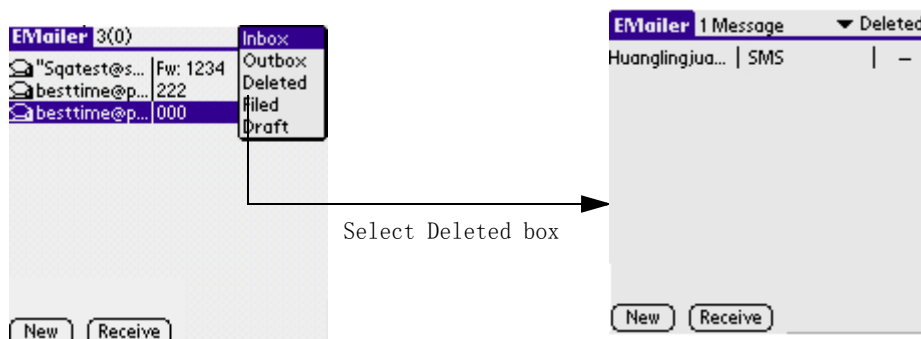


4) Tap the Option icon in the function menu to enter the show option dialog to set the way to arrange list, there are three ways: Date, Sender, and Subject. And you can also set the character code, there are three choices: Auto, GB2312, and Big5.



## To choose the folder



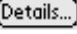
Tap the pick list in the upper right corner, there are five folders: Inbox, Outbox, Deleted, Filed, and Draft. Tap any folder to enter the corresponding folder interface. e.g. Deleted.



## To create and send an e-mail

**1.** Tap the New button at the bottom of the main screen to enter the editing interface.

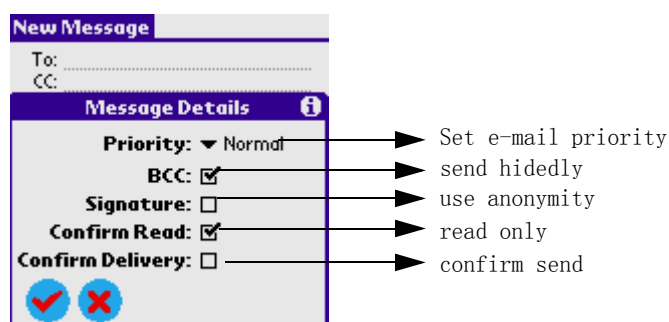
**2.** After inputting respective information on To, Cc, Bcc, Subject, Content, tap a icon as following:

-  Save the mail to outbox and return to the previous interface.
-  Cancel the current operation and return to the previous interface.
-  Show the message details(See Pic).


## Section 2 : Communication and PDA Features

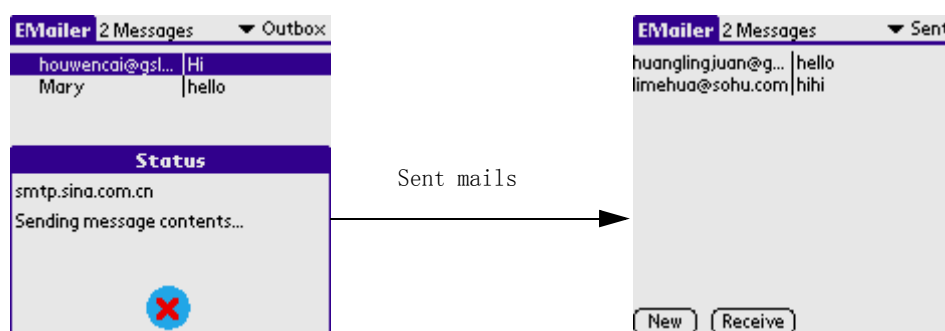
### 3. Using the EMailer

---



3. Select Outbox from the pick list in the upper right corner .

4. Tap the Menu icon  on the front panel of your G18, choose Message > Receive or Message > Send all.

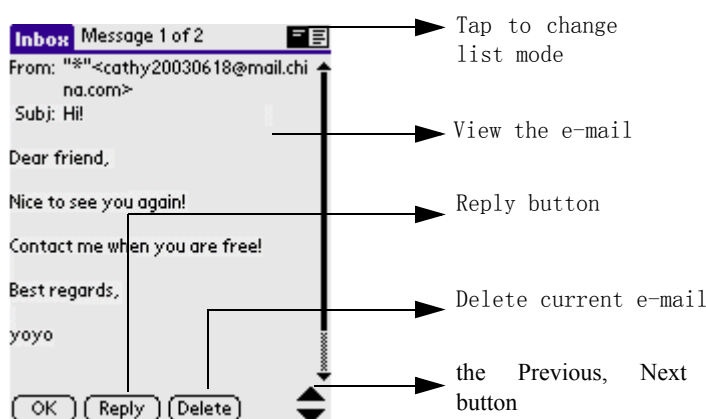


## To browse an e-mail

You can browse the relevant records by choosing the folder in the pick list in the upper right corner in the main screen. Select an e-mail to browse the content, and tap the scroll bar to view all the content.

Tap two icons in the upper right corner to change the list pattern.

Tap the Previous or Next button in the lower right corner to view the previous or next e-mail.



## To edit an e-mail

1. On the list screen of a folder, choose the e-mail you want to edit and enter its browse interface, and tap the Edit button to enter the e-mail editing interface.
2. Tap the Menu icon on the front panel of your G18, choose Options, you can save the e-mail to the draft folder, empty the trash box and perform other operations such as undo, cut, copy, and paste, delete all.
3. After changing, tap Outbox to complete the editing and return to the previous interface.

## To delete an e-mail

You can delete the e-mails on browse interfaces.

1. In the browse interface of the relevant folder, and select the e-mail you want to delete.



## Section 2 : Communication and PDA Features

### 3. Using the EMailer

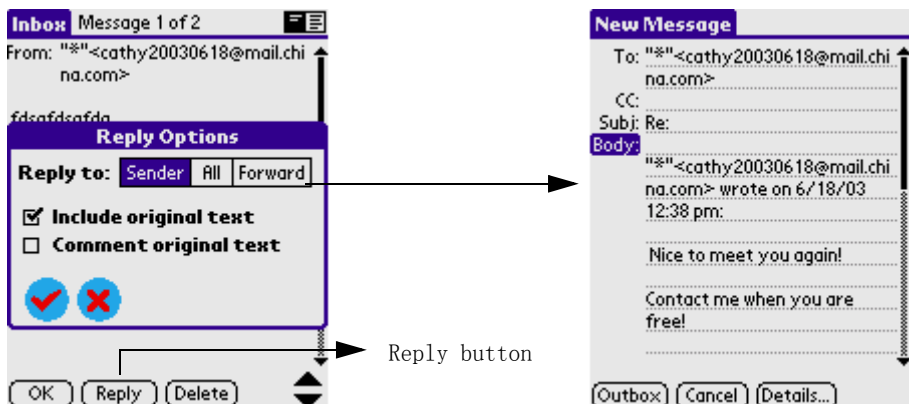
2. Enter the browse interface of the e-mail content , and tap the Delete button at the screen bottom.
3. Tap Yes to confirm your deletion or tap No to cancel your deletion.
4. In the browse interface of the relevant folder, tap the function menu icon at left bottom of the keyboard, and then pop up the menu model and select the empty the crash box .

**NOTE:** The e-mails you deleted from Inbox, Outbox, Filed and Draft will be moved to Deleted folder. But the e-mails that have been deleted in Deleted folder will be deleted permanently.

### To reply an e-mail

You can reply the e-mails on the browse interface of the e-mail content.

1. Tap the e-mail you want to reply and enter its browse interface.
2. Tap the Reply button on the bottom of the screen, and select the Reply, Reply all or transmit in the Reply option.
3. You can input the content you want , and then send this e-mail.



### To search

1. On the interface of creating an e-mail, tap the Receiver.
2. Input contents in input field, and you can search for the e-mail (See the end Picture of Pic).

## 4. Using the jBrowser

### To launch the jBrowser application

1. Tap the Applications icon  .
2. Select Communication from the pick list in the upper right corner.
3. Tap the jBrowser icon  .



### Setting

To View the current settings, tap the Menu icon  on the front panel of your PDA phone, select Tools > Settings.



### Connections

- In the **Settings** tab, the **Profile** box has a list of all the configured profiles. The WAP Browser comes preconfigured with Jataayu

## Section 2 : Communication and PDA Features

### 4. Using the jBrowser

---

WAP 2.0 Gateway, Jataayu 1.X Gateway profiles and a direct connection.

- The **Active Profile** box displays the currently active profile. To set a profile as active or change the active profile, select a profile from the **Profile** list, and click on the **Select** button. By default the Jataayu WAP 1.0 Gateway is selected.
- Check the **Browse Offline** box for offline browsing. To disable offline browsing, uncheck the Browse Offline box. By default the Browse Offline option is disabled.
- Check **Load home page on startup** to load your home page on starting the application. By default the Load home page on startup is disabled.
- Click **Apply** to enable the connection settings. Click **Cancel** to close the dialog box.
- To edit a profile, select it from the **Profile** list and click on the **Edit** button. Details such as the name of the profile, the URL of the homepage and the Gateway to connect through, address and port number can be edited.



The screenshot shows a dialog box for editing a profile. It contains the following fields and options:

- Profile : @1010
- Homepage : <http://wap.hkcs1.com/101>
- Gateway : Wap Gateway 1.0
- IP Address : 192.168.59.51
- Port : 9201
- Mode : ConnectionOriented
- ☐ WTLS Security
- Buttons: Done, Cancel

- Enter the user name and password if the selected Gateway needs it.
- If the Gateway is a WAP 1.0 Gateway, the connection type is to be specified as **Connection Less** or **Connection Oriented**, and the username and password are not required.
- Click **Done** to save the settings or **Cancel** to exit.

### Cache

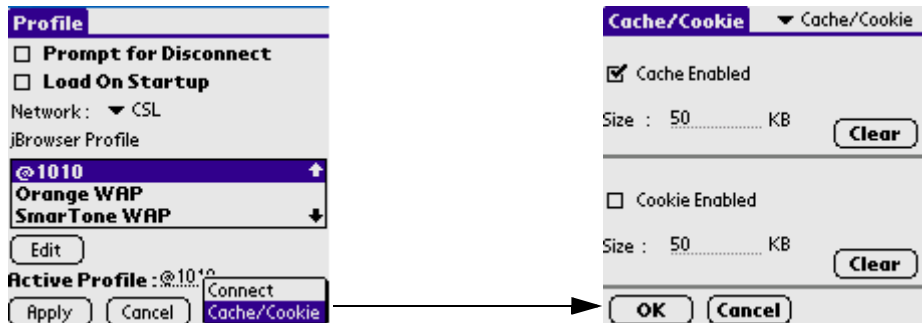
Browsed pages can be cached for future viewing. Fetching pages from the cache loads the page faster.

## Section 2 : Communication and PDA Features

### 4. Using the jBrowser

#### Enabling Cache

- To access the cache screen, select the **Settings** option from the **Tools** menu and click on **Cache/Cookie** in the popup list on the top right hand corner of the screen.



- To enable cache, check **Enabled** in the **Cache** group. Specify the size (in kilobytes) of cache in the **Size** box.
- Click **Ok** to save the settings.
- By default the cache is enabled and the cache size is 50 KB.

#### Clearing Cache

In the **Options** dialog box, under the **Cache/Cookie** tab, click the **Clear** button in the **Cache** group or go to **Tools->Clear Cache** from the menu.

## Cookie

Information related to a session can be stored as a cookie. Persistent cookies are also supported.












#### Enabling Cookies

- To enable the cookie, select **Set Options** from the **Tools** menu and click on **Cache/ Cookie** in the popup list on the bottom right hand corner of the screen.
- Click **Ok** to save your settings.
- By default, the Cookie is enabled and the Cookie size is 50 KB.




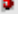





#### Clearing Cookies

- To clear the cookie information, click on **Cache/Cookie** in the popup list on the bottom right hand corner of the screen.
- Click the **Clear** button in the **Cookie** group.

## Surfing Net

-  Surfing through web sites, from the browser.
-  To open a site, click **Go->Open**.
-  Enter the URL of the site to open.
-  You can choose shortcuts from the URL wizard displayed.
-  To enter the shortcuts just click on the shortcut and characters .
-  Click **Undo** to remove the last entered shortcut.
-  Click **Clear All** to clear the URL editbox.
-  Click **Go** to open the site.
-  You can also enter the URL of the site to open in the address bar and click **Go**.
-  You can open the URL wizard by clicking **More** from the Popup list displayed to the left of the address bar.
-  See also: **Address Bar**




## Favorites

-  Your favorite sites!
-  To view or organise your favorites, click on **Go->Favorites** from the menu.
-  The favorites under various categories are displayed.
-  Select a favorite URL and click **Go** to open that site.
-  To delete a favorite, select it and click **Delete**.
-  To add a new URL to favorite list, click **Go->Edit Favorites....**
-  The current URL is shown, which can be edited.
-  Give a name for the favorite.
-  Enter the category and click **Add**.



## Section 2 : Communication and PDA Features

### 4. Using the jBrowser

---







-  To add a category, click **New Category**
-  Give the name of new category and click **Add**.
-  To delete a category, click **Delete Category**. Categories with the number of links are displayed. Select the one you want to delete and click **Delete**.

---







**NOTE:**  Clicking  on the toolbar also opens the favorite list.

---

## History



-  Recently visited Sites
-  Keep track of the web sites visited by you! URLs of the sites visited by you are stored in History.
-  To see the URLs stored in History, click on **Go->History**.
-  History entries can be viewed by **Page Title** or by **Page URL**. Select your option from the list provided.
-  To visit a site from history, just select that site and click **Go**.
-  To delete the history entries, click **Clear**.

## Statistics

-  Statistics
-  To view the statistical information for a connection, click **View ->Statistics**
-  Select the connection from the popup list.
-  Information of the pages viewed, object fetched, number of bytes sent and received and the average page size for the selected connection are displayed.
-  To view the total information, select **Total** from the popup list.
-  Click **Reset** to reset the values to default values.

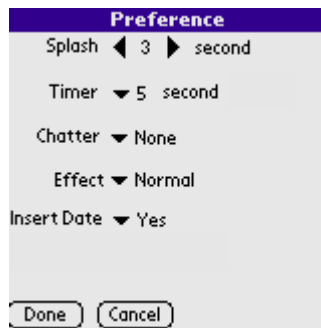
## 5. Using the Camera

### To launch the Camera application

- Tap the Applications icon .
- Select “Studio” from the pick list in the upper right corner.
- Tap the Camera icon  or press the Camera key.

### To set the preferences of a photograph

- Tap the function Menu icon  on the Camera interface.
- Select Options-> Preferences.



### Taking photos




## Section 2 : Communication and PDA Features




### 5. Using the Camera

---

#### *Description of buttons:*

 : Setting Icon.



 : Select different types of photo frame.

 : Select the pixel size of picture (including 160\*160, 160\*200, 320\*240) when you change to 320\*240, a Zoom in and Zoom out buttons will be added to the interface(  /  ).




#### *Five modes of White-balance:*

sunny  ,cloudy  ,daylight lamp  ,bulb  ,auto 

#### *Zooming:*


Tap(  /  ) to zoom in or zoom out the photo.



#### *focusing:*

 : Zoom in  , Zoom out 

#### *Three modes of taking photos:*

 : Normal mode (press button  after setting)

 : Delay mode (press button  after setting)

 : Continuous mode (press button  after setting)

## Browsing photos

Browsing the photos by pressing the Left/Right key on the front panel of your G18.

---

**NOTE:** The photos taken are saved in the PhotoAlbum. Refer to **Chapter 7 - Using the Photo Album** in this section for more information.

---



## 6. Using the Photo Album



This application has to work together with “Camera” application and “PhotoEditor” application. Its function is to manage photos taken by users or pictures downloaded from PC.

---

**NOTE:** Please Synchronize your G18 with the PC frequently, G18 will lose the photo after 3 minutes of without power.

---

### To launch the Photo Album application

- Tap the Applications icon .
- Select Studio from the pick list in the upper right corner.
- Tap the PhotoAlbum icon .

### Album management

- **Album list**

Album list interface will appear when tap the “PhotoAlbum” icon.



- **Default Photo Album**

This application provides four default albums.

**MySplashes:** this is a special album to store snapshots taken by users.

**MyPhotos:** this album is used to store photos taken by users recently and those pictures downloaded from PC. These pictures can be moved to other album.

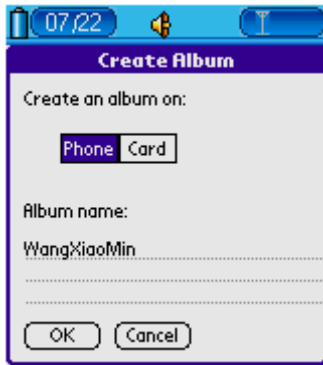
## Section 2 : Communication and PDA Features

### 6. Using the Photo Album

**My Notes:** Store pictures and edit by Photo Editor.

- **To create an album**

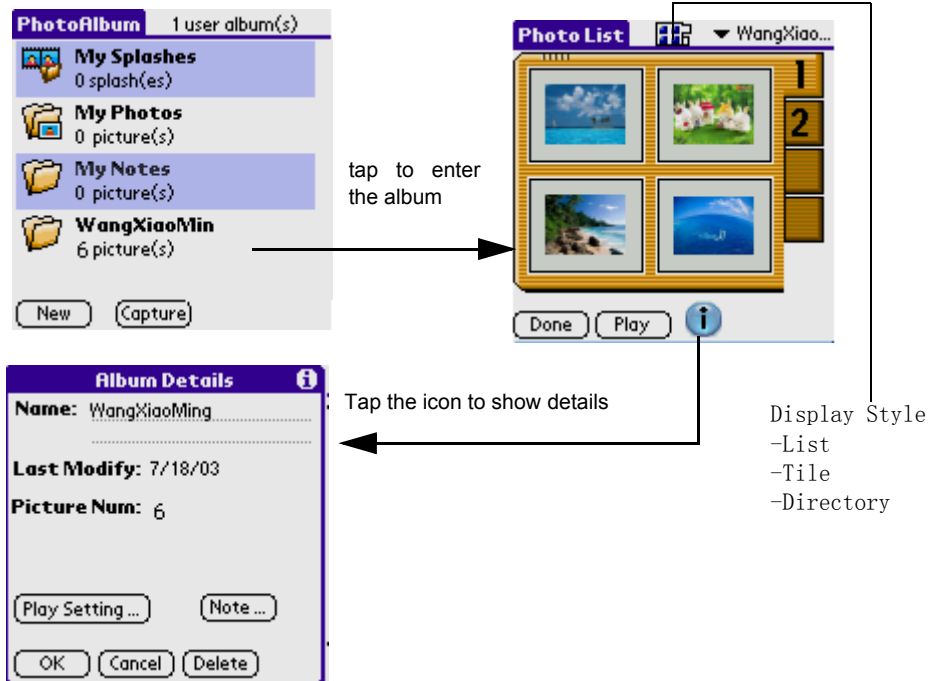
- Tap New, a dialog box of creating new album appears.



- Enter the name of the album and select where is the album going to be stored.
- Tap OK to finish.

- **Deleting Album**

- Tap the album which you want to delete.



- Tap  icon.

## Section 2 : Communication and PDA Features

### 6. Using the Photo Album


---

- Tap Delete button.
- Tap OK to finish.

### To play album

- Enter a album, tap the Play button to start playing the pictures in the album according to the preset mode.
- You can use the Left/Right key on the front panel of your G18 to enlarge/reduce pictures. You can also use the up or down hard button to browse the previous or next picture.
- Tap the screen again to return to the previous page.

### To delete photos

- Enter a album, tap the photo you want to delete.
- Tap  icon to delete the photo.
- Tap “Yes” to confirm.



### To browse photos



1. In pictures list interface, tap any picture to enter the picture browsing view.

2. Tap Done to exit browsing.



3. Functions of Icons :

- Tap  icon to enter Photo Details.
- Tap  icon to delete.

## Section 2 : Communication and PDA Features

### 7. Using the Photo Editor

---

- Tap  icon to zoom in.
- Tap  icon to zoom out.

---

**NOTE:** If a picture is larger than the visible area, you can view different area of the picture by dragging the picture with your stylus.

---

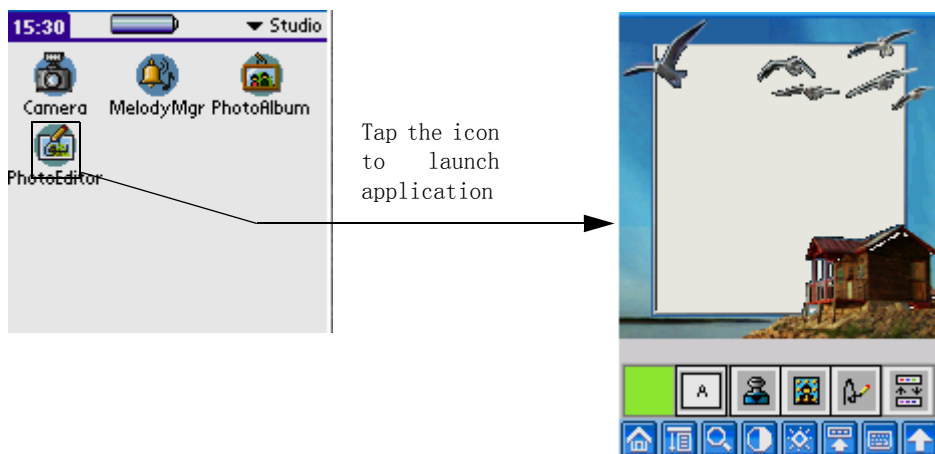
### Export photo from PC to G18

Start up Palm Desktop in your PC, select "Album", then select "New" at the left top of the interface, you can select the photo in your PC, then return to Desktop interface to complete the Hotsync job. The photo selected will be exported automatically to the PhotoAlbum of your G18.


## 7. Using the Photo Editor

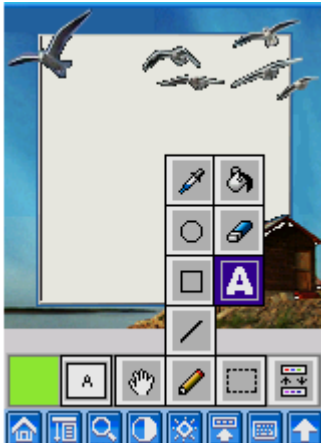
### To launch the Photo Editor application

- Select Studio from the pick list in the upper right corner.
- Tap the Photo Editor icon .



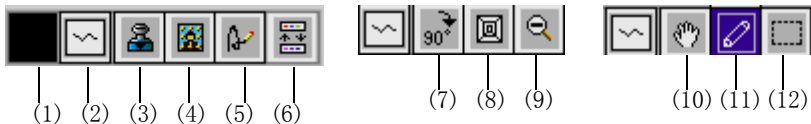
#### To edit a picture

- Tap the Menu icon  on the front panel of your G18.
- Select File > Open, the picture list will be shown.
- Tap the pick list in the upper right corner, you can select any picture to edit.



Album list

#### The definition of the Toolbar icon



(1) Select Color

(2) Line

(3) Select Seal

(4) Frame

(5) Add smart record

(6) Icon Exchange

(7) Angle

(8) Size of Album


(9) Zoom

(10) Move

(11) Stroke Pen

(12) Select Portion and Save As...

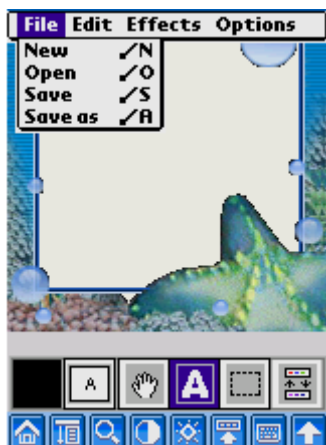
#### To save pictures

- Tap the Menu icon  on the front panel of your G18.
- Choose File -> Save to save pictures.

## Section 2 : Communication and PDA Features

### 8. Using the Address Book

---



## 8. Using the Address Book

### To launch the Address Book application

- Tap Applications icon .
- Select Main from the pick list in the upper right corner.
- Tap the Address icon .

## Section 2 : Communication and PDA Features

### 8. Using the Address Book

---



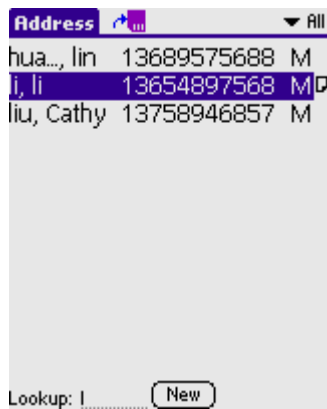
---

**NOTE:** If you want to know about the pigeonhole function, please refer to [Edit Categories].

---

## Lookup

The list will be sorted in phonetic order. You just need to input the first letter of the name, then the screen will display the relative contacts.

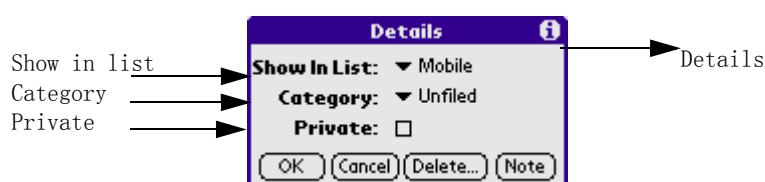


## New/Edit the record

Tap New button on the screen to add a new record.

- **Done**  
Tap this button to return to personal information screen.
- **Details...**  
Tap this button to show a dialog box. In the dialog box, you can set the current record, delete or add notes to current record.
- **Note**  
Tap this button to enter edit interface.

## Dialog Box



- **OK**  
Tap this button to save the settings and close the dialog box.
- **Cancel**  
Tap this button to close this dialog box without saving the changes.



- **Delete...**

Tap this button to prompt whether to delete the selected entry. Tap OK to delete all the information, tap Cancel to cancel deletion.

- **Note**

Tap this button to attach a note to current entry.



### Note editing interface



- **Done:** Finish editing, and return to previous interface.
- **Delete:** Delete current note.

## 9.Using the Date Book

### To launch the Date Book application

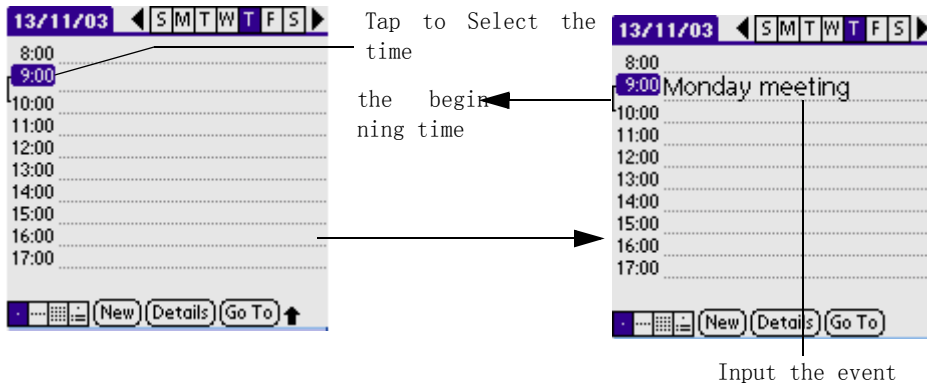
- Tap Applications icon .
- Select Main from the pick list in the upper right corner.
- Tap the Date Book icon. 

### Scheduling timed events

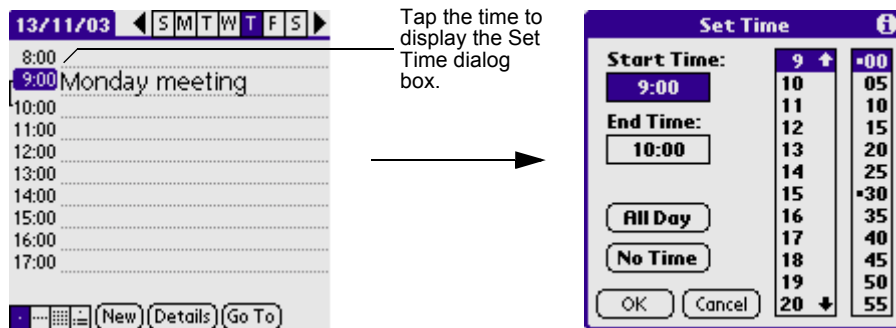
- Tap to select the beginning time of the event.

## Section 2 : Communication and PDA Features

### 9.Using the Date Book



- If the event is longer or shorter than an hour, tap directly on the time to open the Set Time dialog box. You can change time of the event here.



- **Set the duration of the event in either of the following ways:**
  - Tap the time columns in the Set Time dialog box to set the Start Time; Tap End Time; then tap the time columns to set the End Time.
  - Tap All Day if the event lasts all day. The default hours of a standard business day are set by the user, and may be changed using the Preferences command in the Date Book application. See the section **“Changing the displayed Start and End Times”** later in this chapter.
- **Tap OK.**
- Tap the blank region, a vertical line will be shown besides the time to show the duration of the event.

## Section 2 : Communication and PDA Features

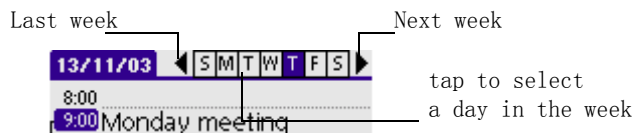
### 9.Using the Date Book

**NOTE:** If the Start Time is equal to the End Time, the time will be shown only once.

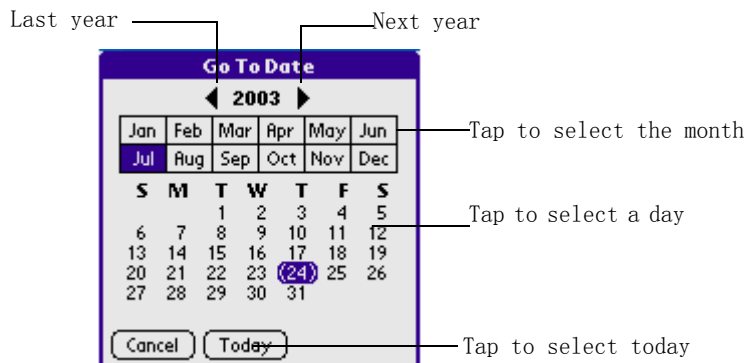
### To schedule a timed event for another date

- Select the date in one of the following ways:

Tap the date you want to set a event from the list of date at the top.Tap “Last week” or “Next Week” to scroll.



Tap “Go To” at the bottom to open the “Go To Date” dialogue box.Tap to select a day in the calendar.



Follow the steps as **Scheduling timed events** to continue.

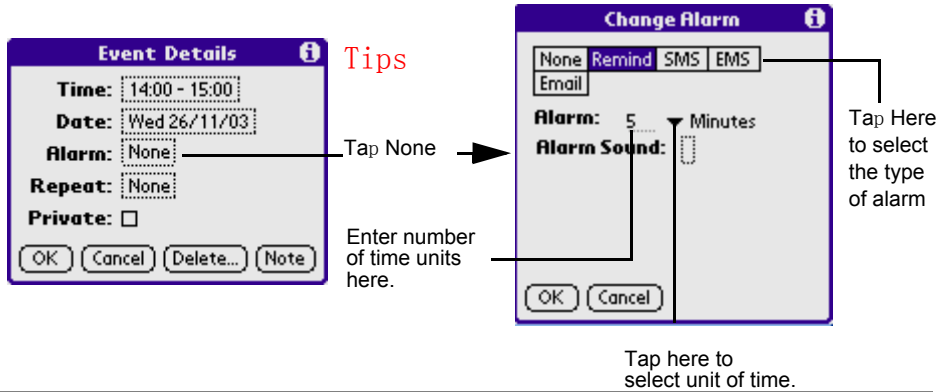
### To set an alarm for an event:

- Tap the event to which you want to assign an alarm.
- Tap Details.
- Tap the Alarm check box to select it. Tap None to show Change Alarm dialog box.
- Set an alarm to sound minutes, hours, or days before a scheduled appointment.

## Section 2 : Communication and PDA Features

### 9. Using the Date Book

- Select the 5 next to poplist and enter any number from 0 to 99 (inclusive) as the number of time units.



**NOTE:** You can also set the option in the tab of “SMS” to alert you by sending message to you.

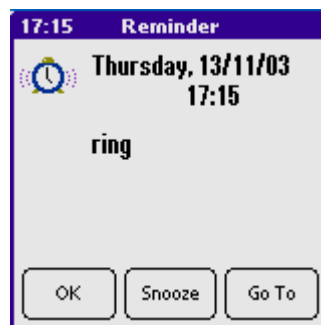
- Tap the field at the right of “Alarm Sound” to select a melody.



button instruction:

- OK - confirm the selection.
- Play - play the music
- Stop - stop playing music
- Delete - delete the music

- Tap OK.
- When the alarm sounds, follow one of the steps as below:



Tap “OK”, to stop the alarm and return.

## Section 2 : Communication and PDA Features

### 9. Using the Date Book

When the alarm dialog box appears, tap Snooze to delay the alarm for a preset five-minute period. Each time you tap Snooze, the alarm is dismissed for an additional 5-minute period.

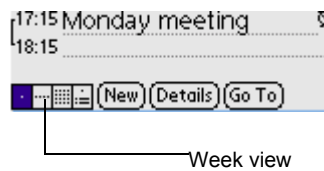
Tap “Go To” to launch Date Book to browse the attached event.

### Working in Week view

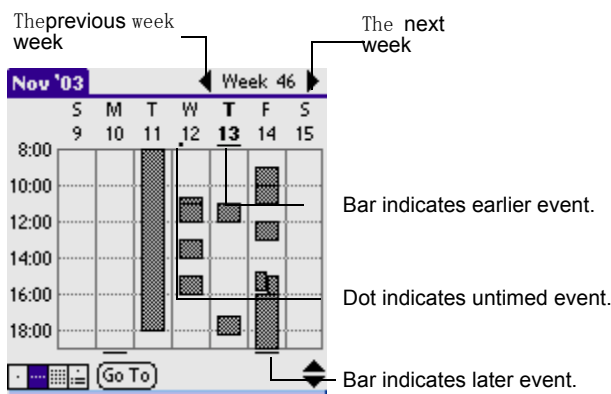
Week view displays a calendar of your events for an entire week. This view lets you quickly review your appointments and available time slots. In addition, the graphical display helps you spot overlaps and conflicts in your schedule.

*To display the Week view:*

- Tap the Week view button.



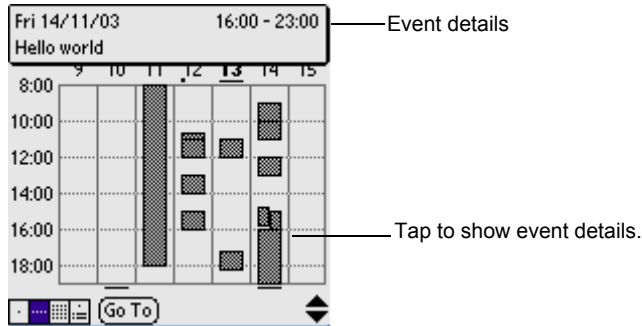
- Tap the up and down navigation controls to move forward or backward a week at a time, or tap on a specific day to display the details of an event.



- Tap an event to display the description.

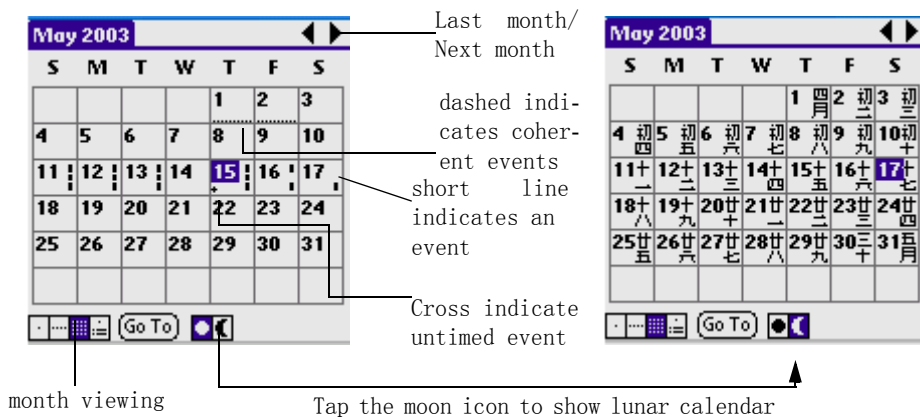
## Section 2 : Communication and PDA Features

### 9.Using the Date Book



### Working in Month view

The Month View screen shows which days have events scheduled. Dots and lines in the Month view indicate events, periodical events, and untimed events.



### Working in Agenda view

The Agenda view lets you view appointments, untimed events, and To Do List items in a single screen. When you tap an appointment or an untimed event, it will switch to Day view, make you able to view the detail of the event. You can also check a to do item to sign this item finished. When you tap a To Do item, it will switch to do item list.

# Appendix I: Safety

---

## Traffic safety

Please check the laws and regulations on the use of mobile phones in the areas where you are driving. Always obey them. Please use the hands-free kit while driving.

Pull off the road and park before making or answering a call if driving conditions so require.

Always secure the phone in its holder. Do not place the phone on the passenger seat or where it can break loose in a collision or sudden stop.

## Phone operating

Remember to follow any special regulations in force in any area and always switch off your phone whenever it is forbidden to use it, or when it may cause interference or danger.

When connecting, read the Owner's Guide for detailed safety instructions. Do not connect it to incompatible products.

## Electronic devices

Most modern electronic equipment is shielded from radio frequency (RF) signals. However, certain electronic equipment may not be shielded against the RF signals from your wireless phone.

- Persons with pacemaker
  - Should always keep the phone more than 20cm (6 inches) from their pacemaker when the phone is switched on.
  - Should not carry the phone in a breast pocket.
  - Should use the ear opposite the pacemaker to minimize the potential for interference.
  - If you have any reason to suspect that interference is taking place, switch OFF your hand-held phone immediately.

- **Hearing aids**

Some digital wireless phones may interfere with some hearing aids. In the event of such interference, you may want to consult your operator or service provider.

- **Other medical devices**

Operation of any radio transmitting equipment, including wireless phones, may interfere with the functionality of inadequately protected medical devices. Consult a physician or the manufacturer of the medical device to determine if they are adequately shielded from external RF signal or if you have any questions.

Switch off your phone in health care facilities when any regulation posted in these areas instruct you to do so. Hospitals or health care facilities may be using equipment that could be sensitive to external RF signal.

## Vehicles

RF signals may affect improperly installed or inadequately shielded electronic systems in motor vehicles. Check with the manufacturer or its representative regarding your vehicle. You should also consult the manufacturer of any equipment that has been added to your vehicle.

Do not carry it with any combustible, explosive object. In such environment, it could cause an explosion or fire resulting in injury or even death.

An air bag inflates with great force. Do not place objects, including both installed or portable wireless equipment, in the area over the air bag or in the air bag deployment area. If in-vehicle wireless equipment is improperly installed and the air bag inflates, serious injury could result.

## Posted facilities

Turn your phone OFF in any facility where posted notices require you to do so.



### **Potentially explosive environment**

Turn your phone OFF and do not remove the battery when in any area with potentially explosive environment and obey all signs and instructions. Sparks, from your battery, in such areas could cause an explosion or fire resulting in injury or even death.

Areas with a potentially explosive environment are often, but not always clearly marked. They include fueling areas such as gasoline stations; lower deck of boats; fuel or chemical transfer or storage facilities; areas where fuel odors are present, i.e.

if a gas/propane leak occurs in a car or home; areas where the air contains chemicals or particles, such as grain, dust, or metal powders; and any other area where you would normally be advised to turn off your vehicle engine.

### **Aircraft**

FCC regulations prohibit the use of your phone while in the air. Switch OFF your phone before boarding an aircraft.

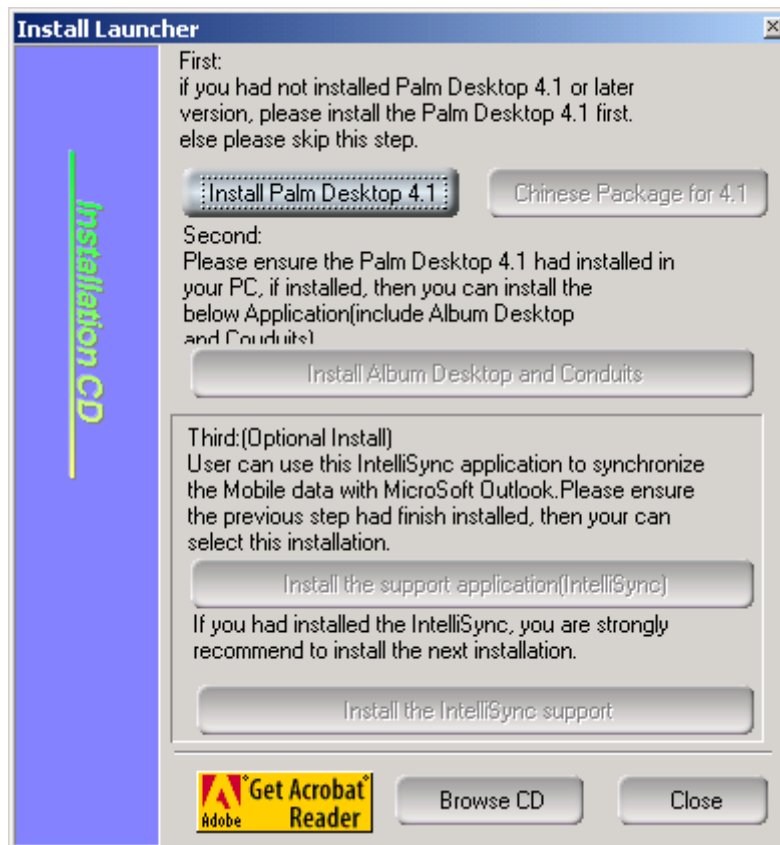
Turn your phone OFF before boarding a plane. To avoid interfering with the aircraft instrument, do not use the phone on the plane.

Persons who disregard the regulations could have their wireless device being confiscated, or being charged in court; OR both.

# Appendix II: Install CD

---

- Put the CD in the driver, the install application will start automatism, if it doesn't work, please select "Install" in the CD.



- You must finish the first part "Install Palm Desktop 4.1 " and the second part" Install Album Desktop and Conduits", or your G18 will not synchronize the software ,information and photos with your computer.
- If you want to synchronize information with the "Microsoft Outlook" of your computer in your G18, please continue installing

the third part "Install the 3rd support application" and the fourth part " Install the third-party additional application".

- Finish installing, you can use you computer to synchronize your PDA with a data line at the first time.
- You can also select the following software to install:
  - Frame Converter.
  - Melody Converter.
- Otherwise, you can also select some useful software to install in the following folders.
  - bbbox: Including some useful information, such as: common sense of the file and so on.
  - Toolbox: Including some useful software, such as: Ebook, exchange rate and soon.
  - Game: Including some interesting games: Mummy,pharaoh and so on.
- User manual: Including English and Chinese user manual.

# Appendix III: Specification

---

Dual-band: GSM 850/1900

OS: Palm 4.1.2

Size: 100mm X 48mm X 21mm

Weight: 105 g

LCD SIZE: 260K 160 X 240 dots

GSM standby time (Phone): 100 hours \*

Estimated talk time: 3 hours \*

Ringtone: 32 chords

Accessories:

- Travel Charger

- CD ROM

- Lithium-Ion Battery

- Earpiece

- Lanyard

- PC-Syn Cable

- Leather Case

\* Operation time will vary depending on SIM card/network settings and usage.

# Appendix IV: Care and maintenance

---

This unit is a product of superior design and craftsmanship and should be treated with care. Please read the suggestions below carefully, which will help you enjoy the functions of the product and its accessories longer.

- Do not dispose of batteries in a fire!
- Keep it and all its parts and accessories out of children's reach.
- Keep it dry. Precipitation, humidity and liquids that contain minerals will corrode electronic circuits.
- Do not use or store it in dusty, dirty places, which may reduce the performance of the product and cause damage.
- Do not place it in hot places. High temperatures can shorten the life of electronic devices, damage batteries and warp or melt certain plastic parts.
- Do not attempt to open it. Non-professional handling of the device may cause damage to it or even invalidate the warranty.
- Do not drop, knock or shake it. Rough handling can reduce the lifetime of the unit or cause damage.
- Do not use strong detergents, chemicals or alcohol to clean it, or use dry cloth to wipe the screen. Please wipe it with soft and slightly dampened cloth or anti-static cloth.
- If the unit, battery, charger or any accessory is not working properly, take them to your nearest authorized and qualified service center. Non-professional handling may cause great damage and invalidate the warranty.

# Appendix V: Reset your G18

---

Under normal circumstances, you will not have to use the reset button. Since Palm OS is an open platform, the download software and files may not be compatible with G18 completely. Sometimes, G18 may be out of order. In this case, you need to perform a reset your G18.

## Soft reset

A soft reset tells your G18 to stop what it's doing and start over again. All records and entries in your G18 are retained with a soft reset. After a soft reset, the Welcome screen appears, followed by the Date and Time Preferences screen (to set date and time).

### To perform a soft reset:

Use the reset tip tool, or the tip of an unfolded paper clip (or similar object without a sharp tip), to gently press the reset button inside the hole on the left side of your G18.

## Hard reset

With a hard reset, all records and entries in your G18 are erased. Never perform a hard reset unless a soft reset does not solve the problem.

---

**Note:** You can restore any data previously synchronized with your computer during the next HotSync operation. So please use the HotSync frequently, or use the function “Data backup” of your G18.

---

### To perform a hard reset:

1. Use the reset tip tool, or the tip of an unfolded paper clip (or similar object without a sharp tip) to gently press and release the reset button.
2. Hold down the power button on the front panel of your G18. Wait for the “Palm Powered” logo to appear; then release the power button.

## Appendix V: Reset your G18

---

3. When a message “Erase all data?” appears on the screen warning that you are about to erase all the data in your G18.
4. Press the upper half of the scroll button on the front panel of your G18 to complete the hard reset and display the Digitizer screen.

---

**Note:** With a hard reset, the current date and time are retained. Formats Preferences and other settings are restored to their factory default settings.

---

# **Appendix VI: FCC Information**

---

For body worn operation, this phone has been tested and meets FCC RF exposure guidelines when used with an accessory that contains no metal and that positions the handset a minimum of 1.5 cm from the body. Use of other accessories may not ensure compliance with FCC RF exposure guidelines.





Group Sense PDA Ltd.

---