

Copyright

- Copyright © 2007 Group Sense Mobile-Tech Limited. All rights reserved.
- Product specifications and features are for reference only and are subject to change without prior notice.

Declaration

- This User Guide is published by Group Sense Mobile-Tech Limited., without any warranty. Improvement and changes to this User Guide necessitated by typographical errors, inaccuracies of current information, or improvements to programs and/or equipment, may be made by Group Sense Mobile-Tech Limited. any time and without notice. Such changes will, however, be incorporated into new editions of this User Guide.

FCC Statement

This device complies with Part 15 of the FCC Rules. Operation is subject to the following two conditions: (1) this device may not cause harmful interference, and (2) this device must accept any interference received, including interference that may cause undesired operation.

Changes or modifications not expressly approved by the party responsible for compliance could void the user's authority to operate the equipment.

FCC Radiation Exposure Statement














The antennas used for this transmitter must be installed to provide a separation distance of at least 20 cm from all persons and must not be co-located or operating in conjunction with any other antenna or transmitter.

Important safety information

PLEASE READ THIS CAREFULLY BEFORE USING B100!

- Always treat your product with care and keep it in a clean and dust-free place.
- Do not expose your product to moisture or humidity.
- Do not expose your product to extreme high or low temperatures.
- Do not attempt to disassemble your product.
- Use the charger/battery supplied by Group Sense Mobile-Tech Limited. as an accessory to charge your product; no reverse charging with other chargers, they may have inverse polarity.
- Never use the charger if the plug is damaged.
- Never touch the charger if your hands/feet are wet.
- Do not expose the charger to water, it may cause electrical fires.
- Do not repair the charger yourself for your safety.
- To reduce the risk of fire or burns, do not disassemble, crush or puncture the battery.
- Recycle or dispose of the battery safely and properly according to local laws and regulations.
- Do not dispose of the battery in fire or water.
- Do not let the metal contacts on the battery touch other metal object, it could lead to short-circuit and damage the battery.
- For B100 model, only approved batteries, chargers that are designed for the model can be used with B100 PDA unit.
- The use of any other type may invalidate any approval, warranty; and it may also be dangerous.

Icon description

Icon	Icon Name
	ActiveSync
	MSR connected
	Swipe the card successfully
	Fail to swipe the card
	WLAN connected
	WLAN searching
	WLAN disconnected
	Battery indicator
	Battery charging
	Tap to switch application
	Short tap to hide/show current Input method keyboard
	Short tap to select another Input method hide/show
	Start menu

LED light description

There are two LED lights on your device, we will give the information for the left one:

- ◆ Red flash – Battery low
- ◆ Red – Battery very low
- ◆ Orange flash – Battery charging
- ◆ Green – Battery full
- ◆ Blue flash slowly – WIFI connected
- ◆ Blue flash quickly – WIFI searching

- ◆ Off – WIFI disconnected


WIFI connection settings

1. Plug in battery; plug AC charger to device to charge up battery.



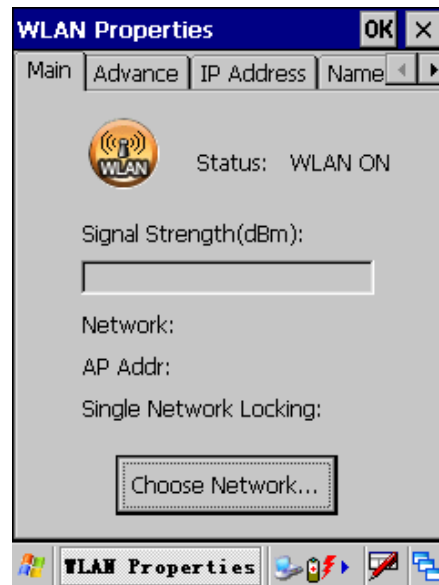
2. Short press the top “POWER” button, the GREEN LED lights on for a second and the boot logo is shown. It will boot to the WinCE OS.



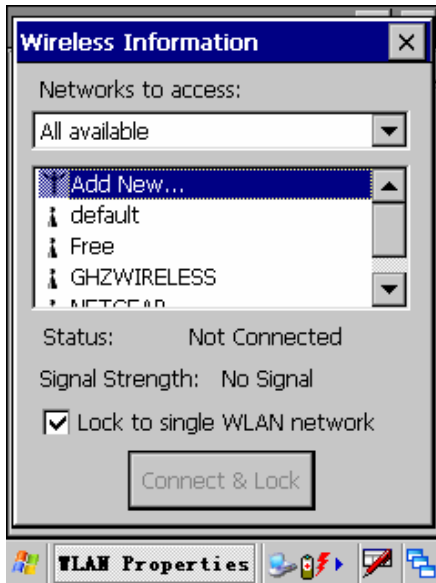
3. In WinCE desktop, tap  in system tray, select “Setting” -> “Control Panel”.



4. Select "WLAN" in control panel. Then tap "Choose Network" button.




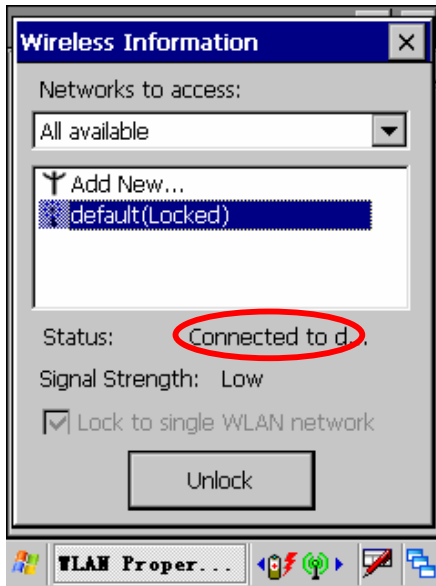
5. Select an available WLAN in the list. Tap "Connect & Lock".



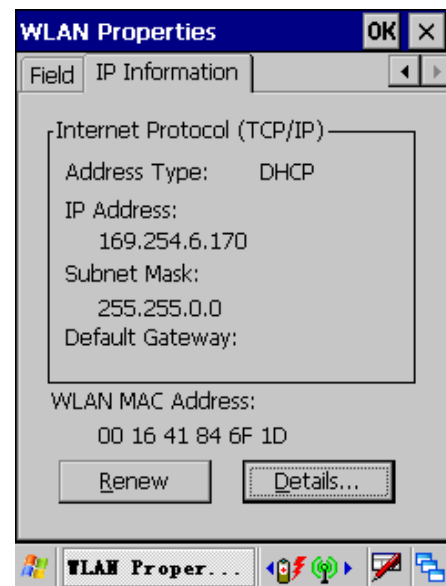
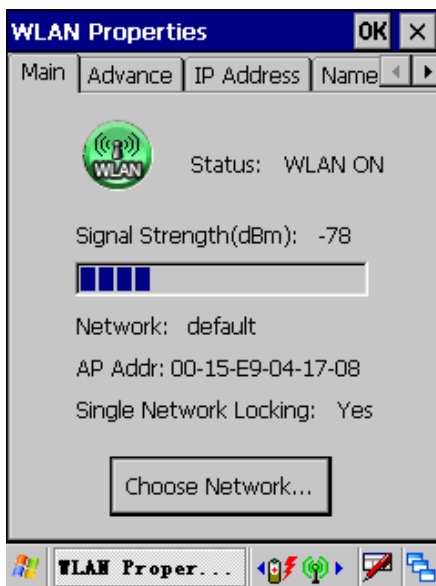
6. Input network password if needed. Tap input method icon on system tray to open soft keyboard. Tap “OK” to finish setting.



7. If connection succeeds, system will show on the status field of Wireless Information screen. Tap  to exit.



8. In WLAN setting main panel, you can perform Advance Setting, IP Setting, DNS and WINS Setting, and viewing IP info.



9. When WLAN connected, there is an icon and LED on top of cabinet to indicate connection status.

