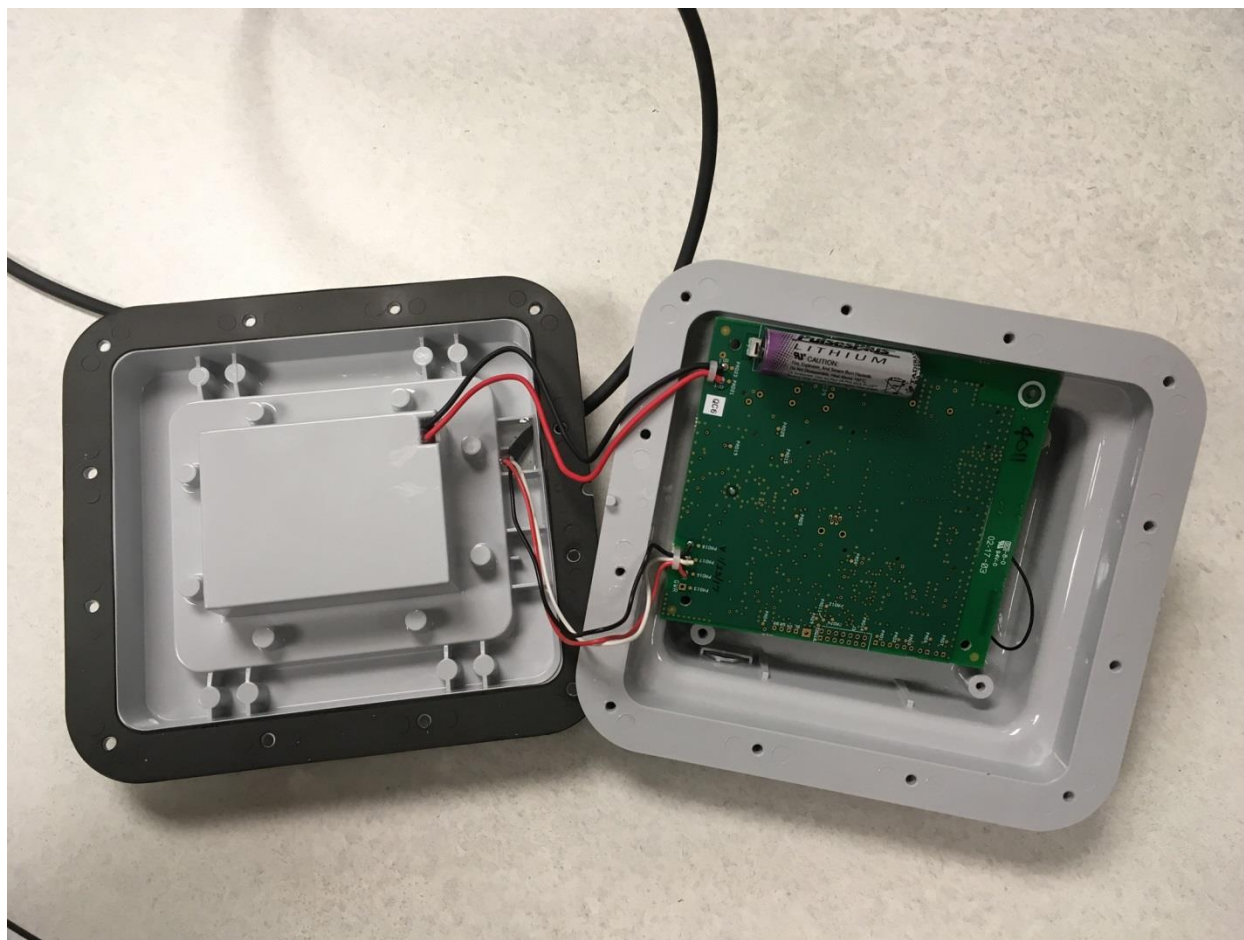
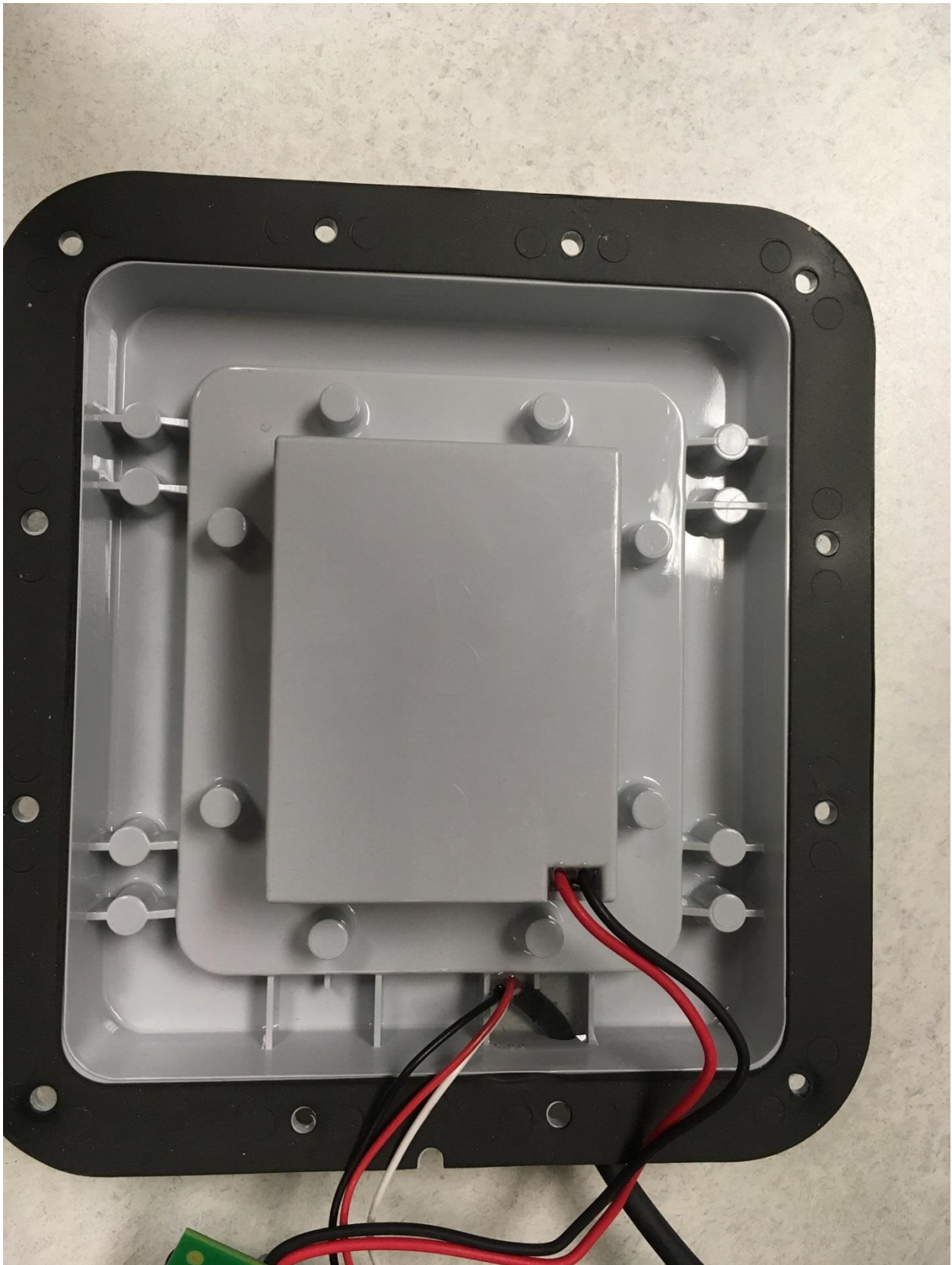


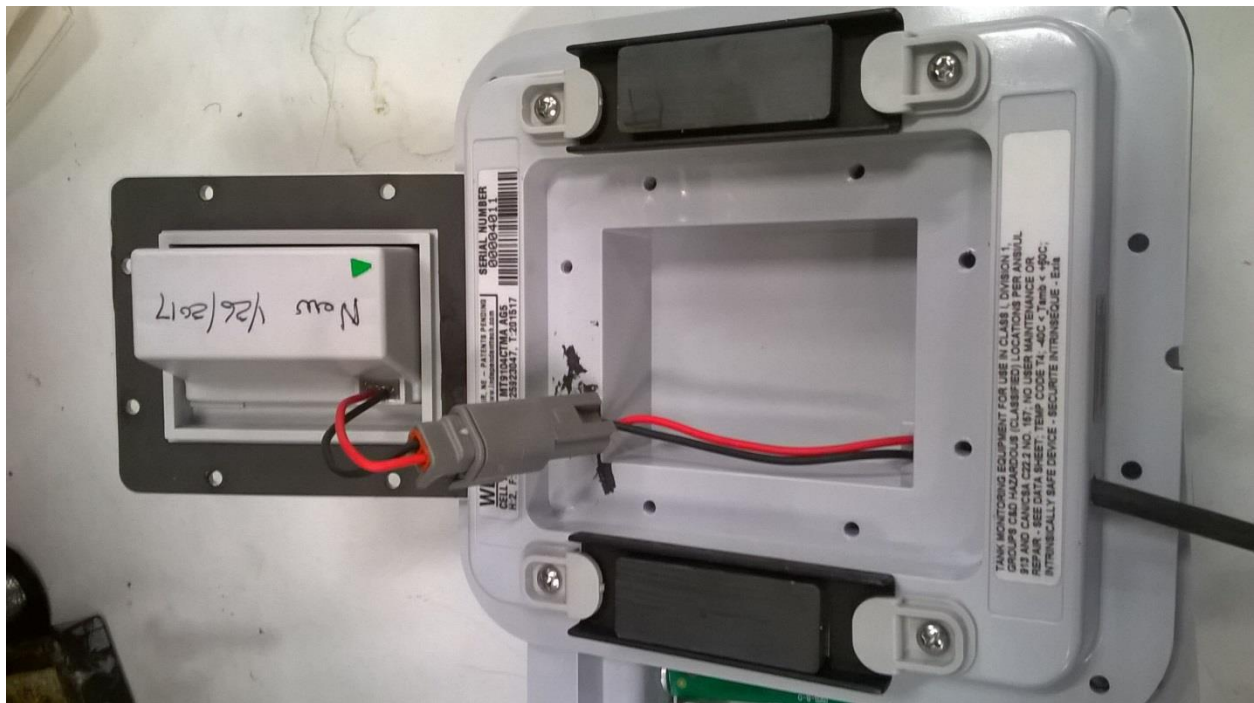
INTERNAL PHOTOS



INTERNAL PHOTOS



INTERNAL PHOTOS

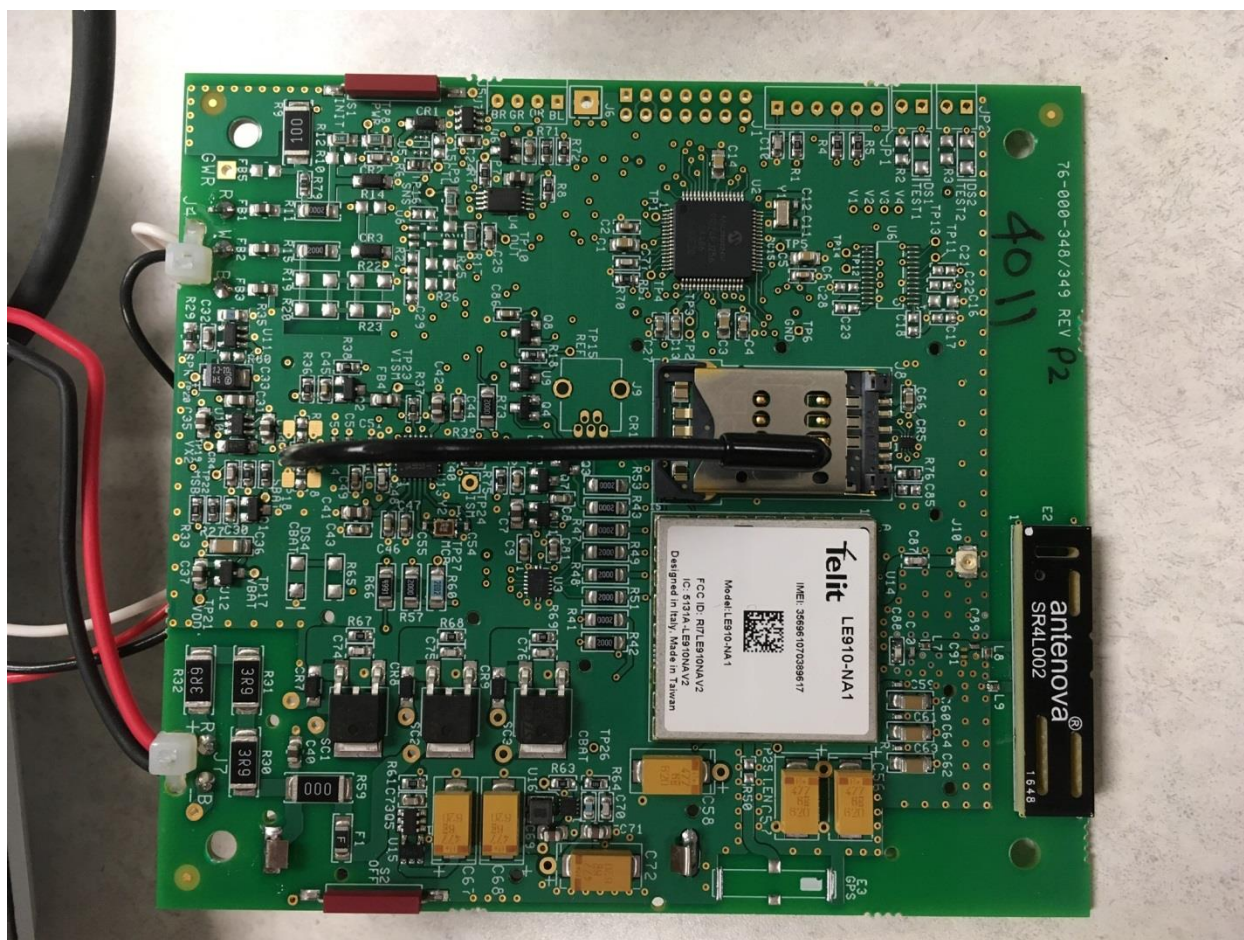


This photo shows the inside of the compartment for the intrinsically safe battery pack

INTERNAL PHOTOS



INTERNAL PHOTOS



Notes:

1. Antenna in bottom right (Antenova) is the GSM antenna approved with the Telit LE910-NA1 pre-certified module.
2. RF connector J10 goes to diversity antenna shown in the preceding photo
3. 902- 928 MHz band antenna is shown as the bent black wire in the center
4. The antenna traces to J10 and E2 (Antenova antenna) were layout per the guidance in the user's manual for the Telit module, M/N LE910-NA1, User's manual, Section 6.4

INTERNAL PHOTOS

