

Figure 1 - Internal photo

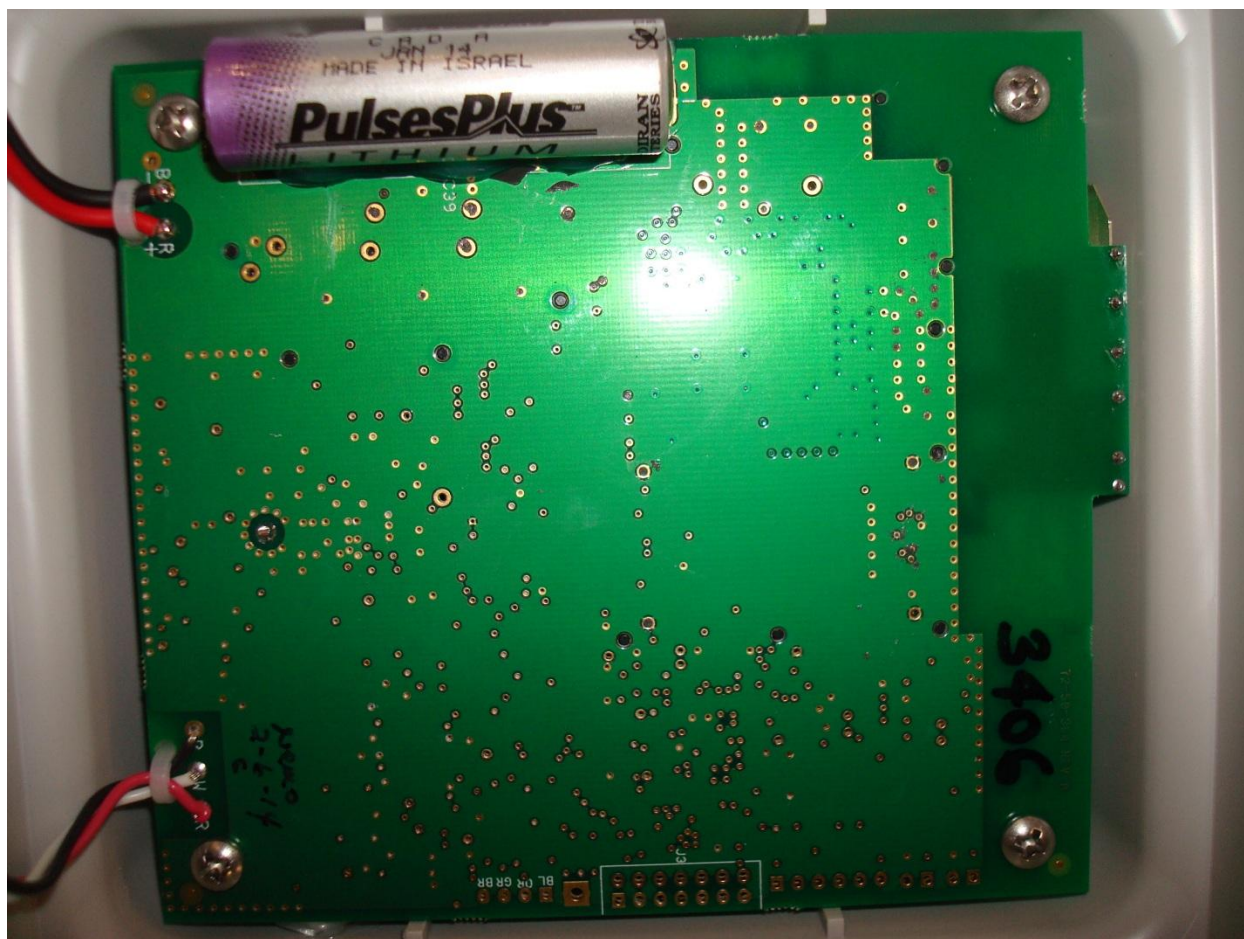


Figure 2 - PCB Bottom



Figure 3 - Inside of the top part of the plastic enclosure

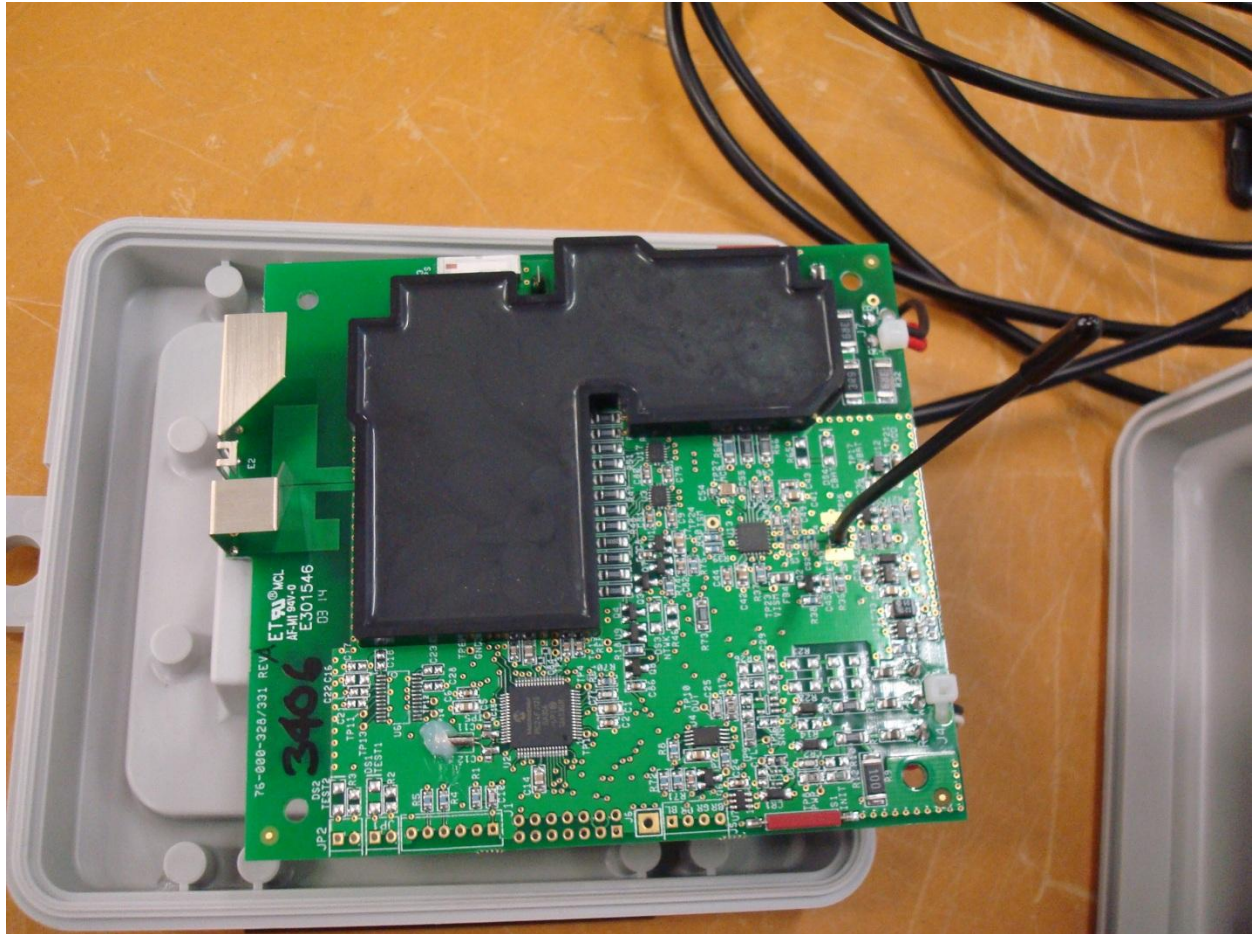


Figure 4 - Top of circuit board

*Note: The black material is potting. See Figure 11 for an image of the board with the potting removed.

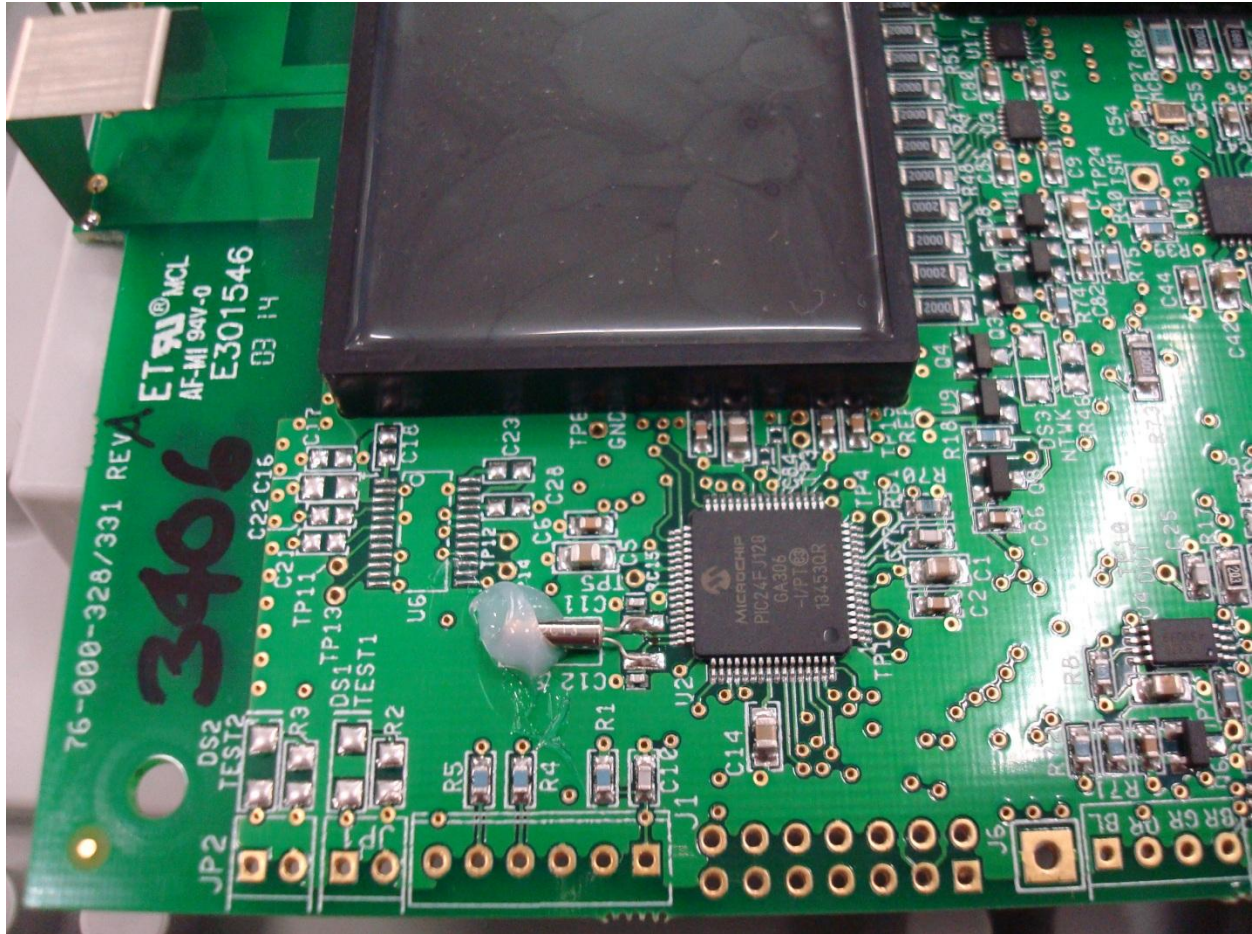


Figure 5 - Top circuit board detail

*Note: The black material is potting. See Figure 11 for an image of the board with the potting removed.

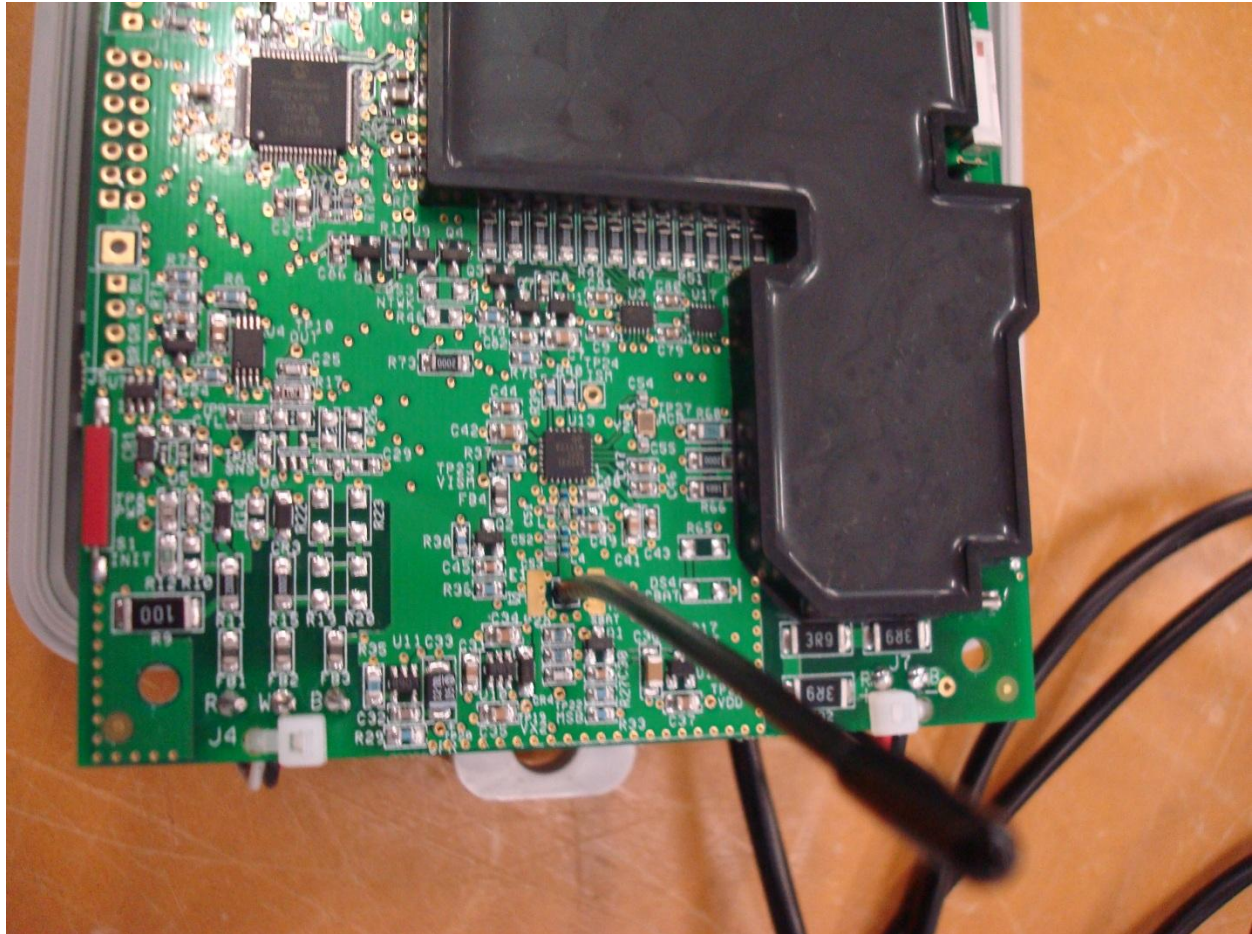


Figure 6 - Top circuit board detail

*Note: The black material is potting. See Figure 11 for an image of the board with the potting removed.

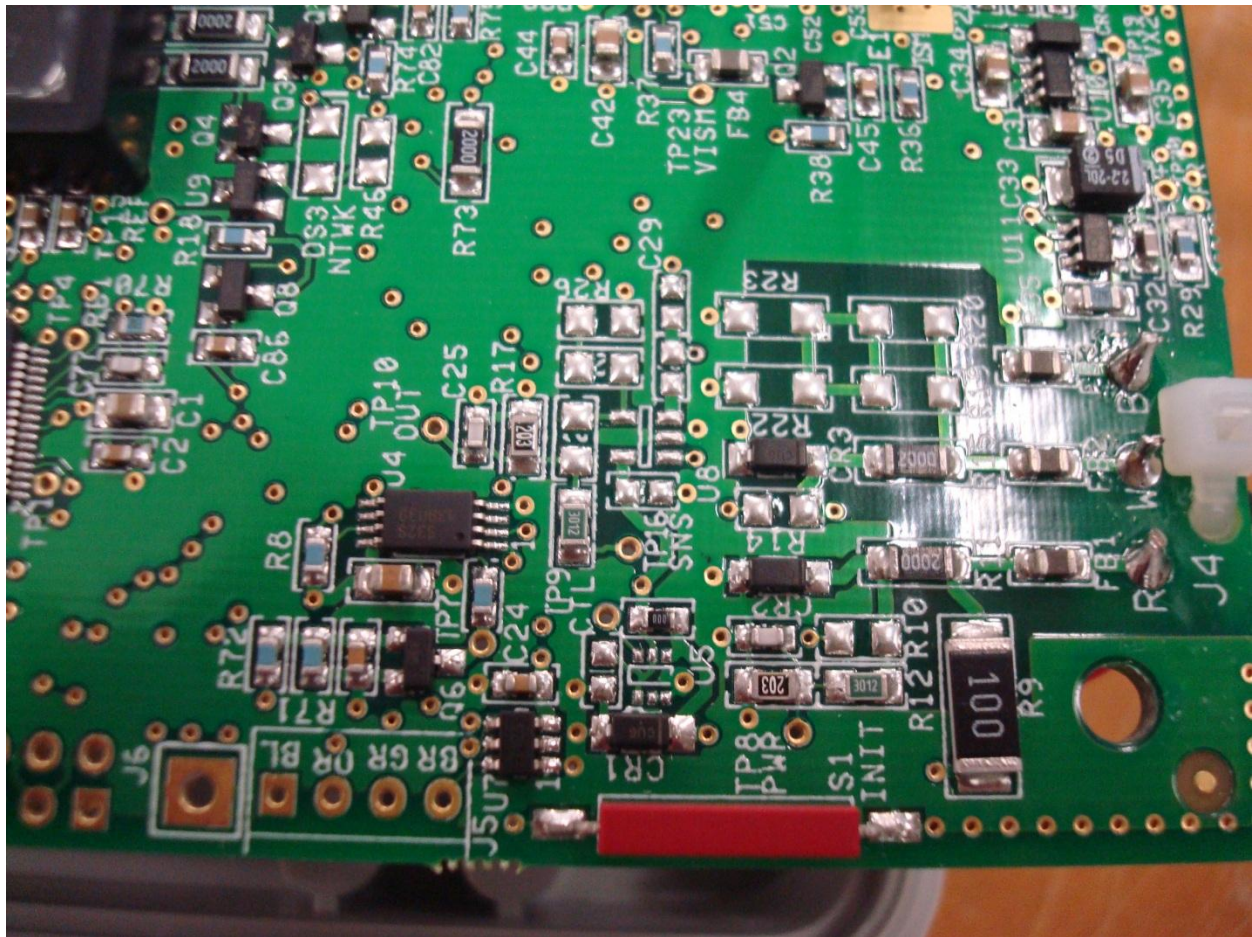


Figure 7 - Top circuit board detail

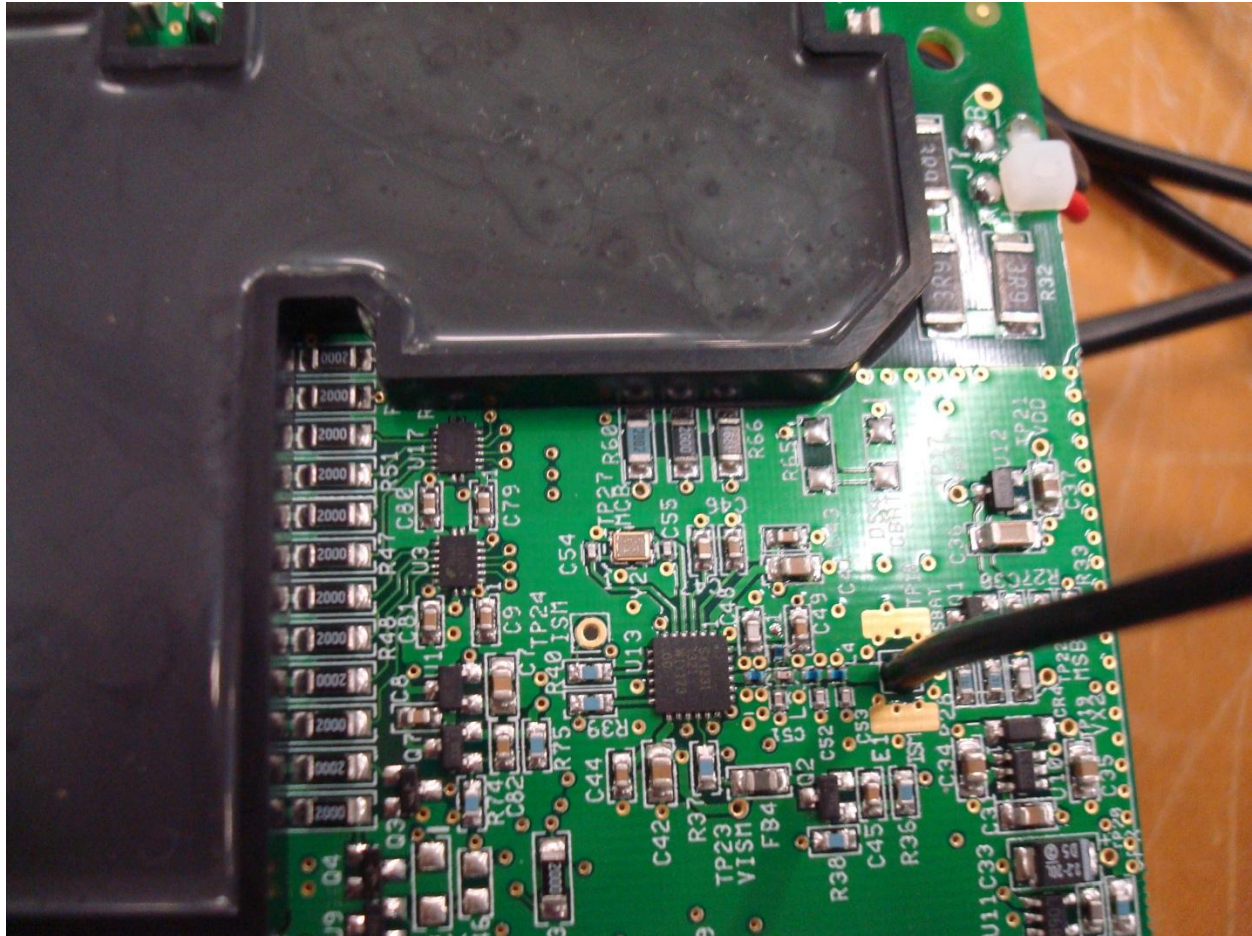


Figure 8 - Top circuit board detail (including antenna)

*Note: The black material is potting. See Figure 11 for an image of the board with the potting removed.

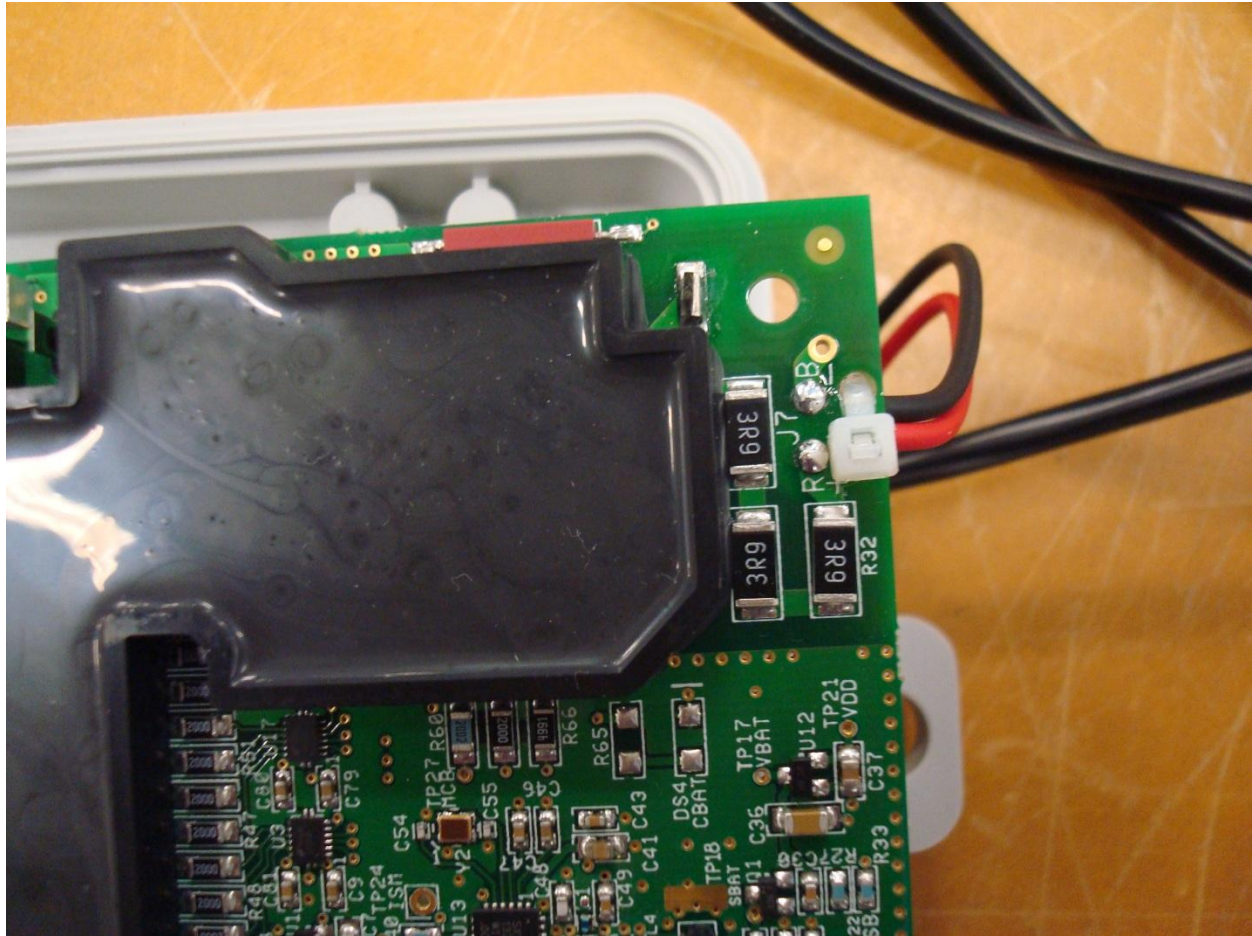


Figure 9 - Top circuit board detail

*Note: The black material is potting. See Figure 11 for an image of the board with the potting removed.



Figure 10 - Top circuit board detail

*Note: The black material is potting. See Figure 11 for an image of the board with the potting removed.



Figure 11 - Circuit board - unpotted, antenna removed