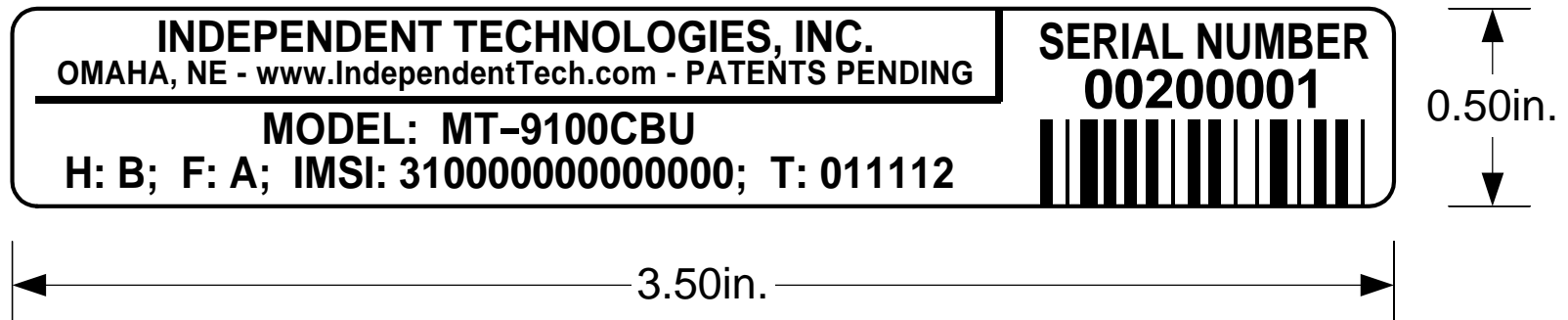


WESROC RMS 3G Cellular Base Unit - Labeling

Model MT-9100CBU

Revision A (Scale = 2:1) - Page 1 of 3

Identification Label



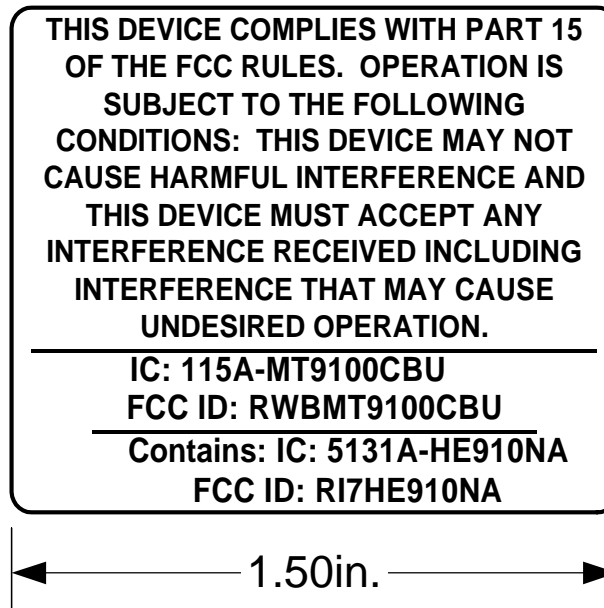
Print on Brady B489 white polyester label stock.
Print using Brady 4300 Series thermal transfer ribbon.

WESROC RMS 3G Cellular Base Unit - Labeling

Model MT-9100CBU

Revision A (Scale = 2:1) - Page 2 of 3

FCC/IC ID Label



Print labels on Brady B489
white polyester label stock.

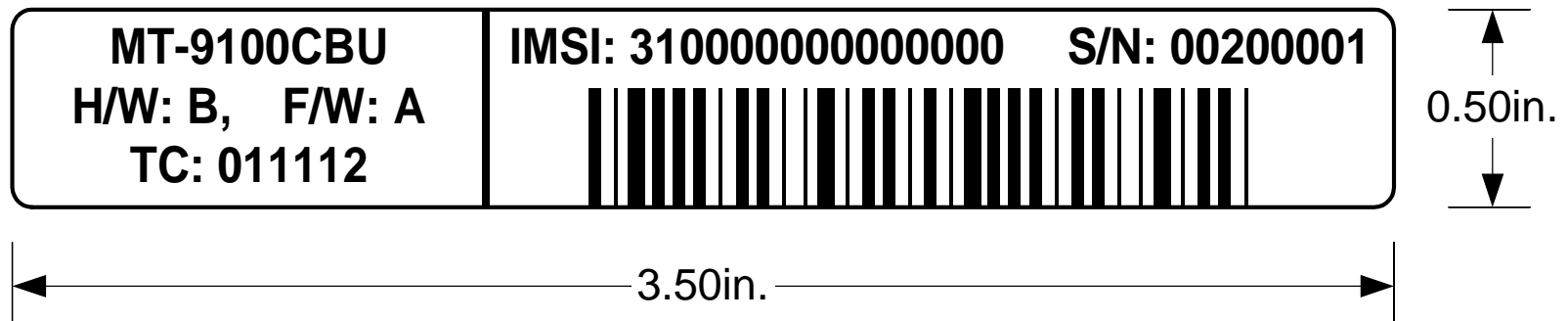
Print using Brady 4300 Series
thermal transfer ribbon.

WESROC RMS 3G Cellular Base Unit - Labeling

Model MT-9100CBU

Revision A (Scale = 2:1) - Page 3 of 3

Shipping Box Label



Print on Brady B489 white polyester label stock.
Print using Brady 4300 Series thermal transfer ribbon.

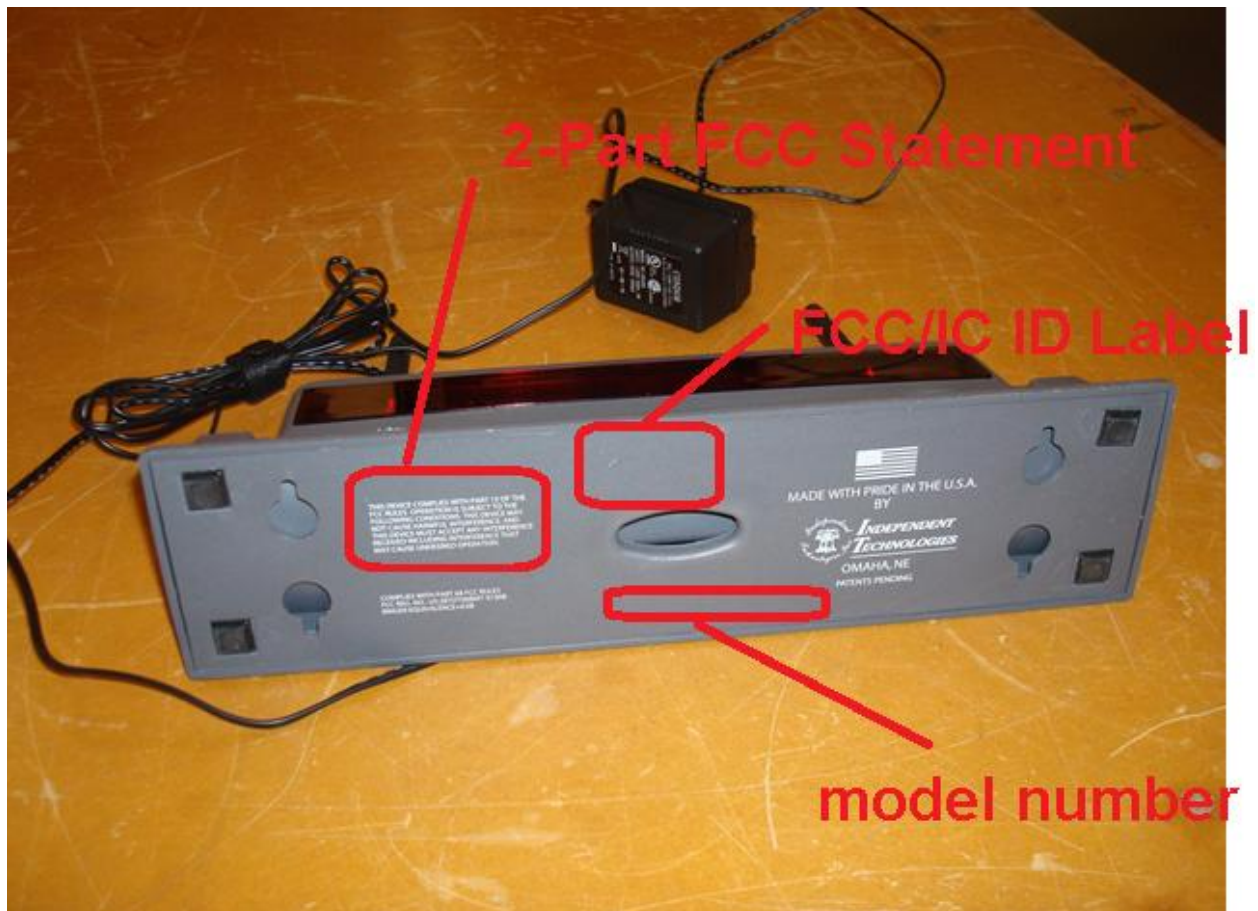


Figure 1 – Label locations

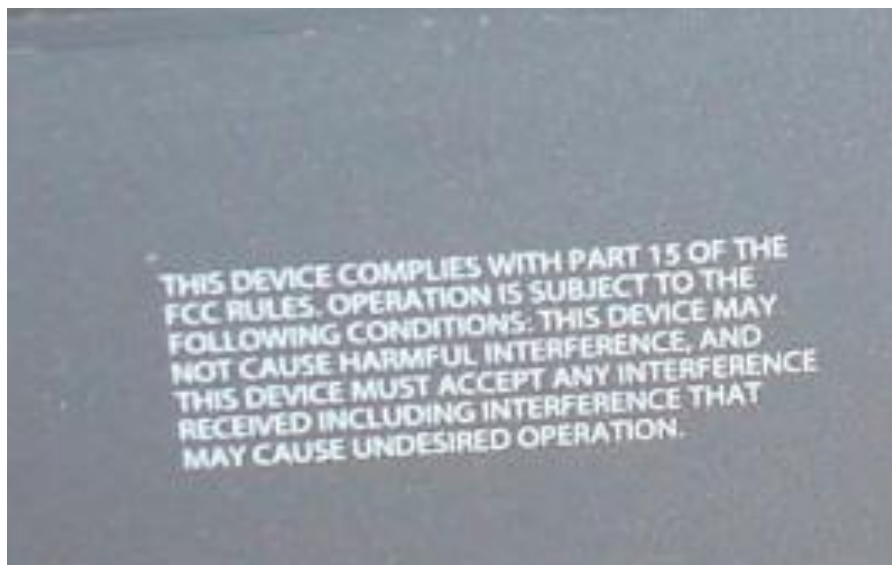


Figure 2 - 2-part statement