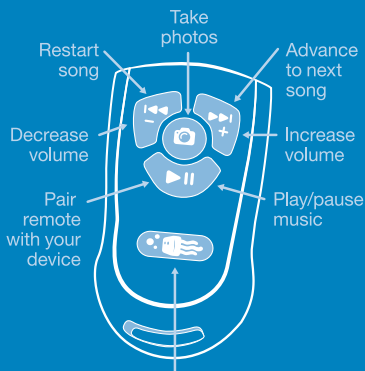




== JELLY == REMOTE

For Bluetooth enabled iPhone, iPod, iPad, Apple computers and a wide range of Android devices.



Lights up when communicating with your device

square jellyfish®

Get in the Picture™

www.squarejellyfish.com



Model Number: JLYREMG15

Designed in USA. Made in China
Patents pending. Warning: choking hazard – small parts. Not for children under 3 yrs.

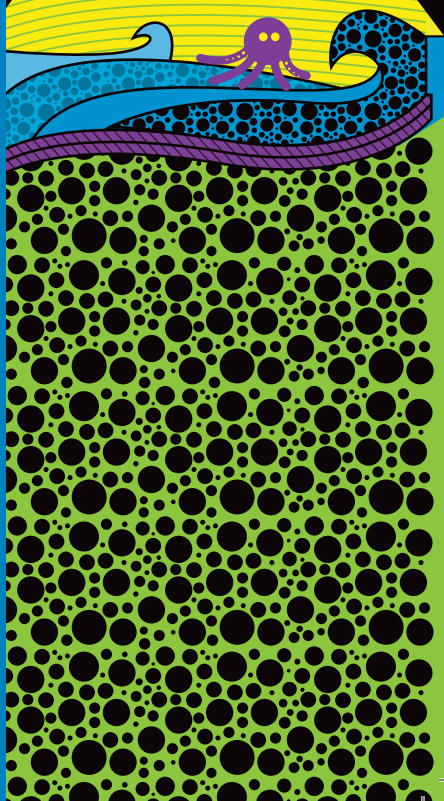


square jellyfish® == JELLY == REMOTE

TAKE PICTURES

LISTEN TO TUNES

FOR APPLE AND ANDROID

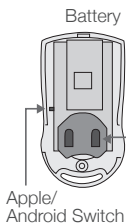


JELLY REMOTE USER'S MANUAL

Thank you for purchasing the Square Jellyfish 4-button Jelly Remote. This device is designed to communicate with your smartphone or devices via Bluetooth. To set up your remote, please follow these instructions.

Android or Apple –


The remote is configured for the Apple devices. If you have an Android device perform the following: Remove the battery cover and remove the battery. Gently slide the small switch on the PCB down for Android. Replace battery and cover.



(For the Apple system the remote can pair with iPhone, iPod, iPad and Apple Computers with Bluetooth. Note that not all functions are available on computer systems or smartphones. With the wide range of Android phones capability is unknown.)

Pairing – Press and hold ►► (about 5 seconds). The remote is now in the pairing mode. Go to the Bluetooth settings menu and look for SJF_G15BR1 and select “Pair” or connect.

(Please note: After pairing do not press any other buttons while in the pairing menu.)

Camera Mode – Open the camera application on your device. Push the  button on the Jelly Remote and your device will take a picture.


Music –

Before using the remote, first open the music application on your device.

- ►►: Play and pause music stored on your device.
- – and +: Decrease or increase volume.
- ◀◀ and ▶▶: Press and hold ◀◀ button for 4 (or more) seconds and the song will start over. Press and hold ▶▶ button for 4 seconds and the next song will play.

(Please note: We have tested the remote on both the iPhone and Galaxy phones. With the large number of phones types and manufacturers it is hard to know how all functions will perform. After you have paired the remote, you can try the phone in different modes to see how the remote will function.)

Sleep Mode – If no buttons are pushed for 5 minutes, remote will enter sleep mode. Press any the button to wake the remote up.

The  logo will blink three times to show that the remote is trying to establish two-way communication. After communication is reestablished it will blink once more. Press the desired function a second time to complete the operation. Please wait for communication to be reestablished; pressing buttons several times will only delay the process.

Pairing Problems –

1. The Jelly Remote uses two way Bluetooth communication to talk with your device. It can only be paired with one device at a time. If you attempt to pair the Jelly Remote to more than one device this could cause a problem.
2. If for some reason you cannot pair the remote, the first step is to go to the setting menu and ask your device to forget or remove the remote from the list.
3. Press and hold the ►► button for several seconds until the device appears on the list.

Changing Battery – If the remote no longer functions properly, the battery has probably been exhausted. Replace the battery with a 3V Lithium CR2032. The “Plus” side should face up.

Caution – Do not use the Bluetooth remote to wake up your phone. It is better to wake up your phone before you use the remote.

LIMITED WARRANTY

This Jelly Remote is warranted against defects in materials and workmanship for a period of one (1) year from the date of the original retail purchase. If a defect exists, Square Jellyfish will, at its option and to the extent permitted by law, (1) repair the product at no charge using new or refurbished parts; or (2) exchange the product with a functionally equivalent product that is new or refurbished; or (3) refund the original purchase price.

This warranty excludes damage resulting from abuse, accident, modifications, or other causes that are not defects in the materials or workmanship. To the extent permitted by applicable law, the manufacturer is not liable for any direct, indirect, incidental, or consequential damage arising out of the use or service of the product, including, but not limited to damage which may be caused to any electronic device, or other device utilized in conjunction with the Jelly Remote. To the extent permitted by applicable law the manufacturer of the Jelly Remote disclaims all implied and statutory warranties, including warranties of merchantability and fitness for a particular purpose. If implied warranties cannot be disclaimed, then such warranties are limited in duration to the duration of this warranty. This warranty gives you specific legal rights, and you may have other rights, which vary from state to state.

To obtain warranty service contact Square Jellyfish using the information provided at www.squarejellyfish.com. To the extent permitted by applicable law Square Jellyfish will require proof of purchase for all warranty repairs or replacement.

Changes or modifications not expressly approved by the party responsible for compliance could void the user's authority to operate the equipment.

This device complies with Part 15 of the FCC Rules.

Operation is subject to the following two conditions:

(1) this device may not cause harmful interference, and

**(2) this device must accept any interference received,
including interference that may cause undesired operation**