

General Specifications

Model Name	Sound Hole Bluetooth speaker (SH-200)
Bluetooth spec	V2.1
Function	BT speaker, Conference call
Operating Freq	2.4GHz ~ 2.48GHz unlicensed ISM band
Service Distance	10m
Button Key	Power (Push SW), BT ON, Volume +, Volume -
LED Display	2 Color LED (Display BT status, Charging status)
Speaker	2.1 Stereo speaker, 2W + 2W + Bass 5W
Bluetooth profile	A2DP, AVRCP, HFP, HSP
MIC	Internal MIC
Battery	Internal lithium polymer Battery
Operating Time	Stand by : 100Hrs, Audio : 10Hrs, Conference call : 10Hrs
Input Port	Charging USB, Audio Line-in
Charging	3Hours
Dimension	195x84x57 mm
Weight	440g

Warranty

1. This product was manufactured based on strict quality management and inspection process.
2. If a breakdown occurs under normal conditions, repairs shall be performed free of charge during the warranty period.
3. If the service corresponds to a "Paid A/S" type, however, a service charge shall apply even during the warranty period
4. Please present the warranty certificate when requesting for repairs.
5. A warranty certificate cannot be reissued. Therefore, please store it in a safe place.
6. Batteries, cable have a six-month warranty from the date of purchase.

Model	SH-200 (Bluetooth speaker)	
Warranty Period	Speaker	Accessory (USB charging Cable)
	One year	six-month
Date of purchase	(Seller :)	

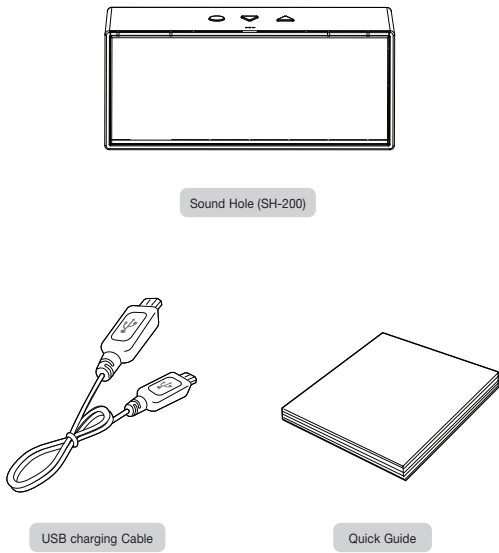
Service shall be provided for a fee (paid by customer) under the following cases.

- Problem caused by foreign matter entering the product (water, drinks, coffee, small items)
- Problem and damage caused by dropping the product or applying force to it
- External damage and change in shape caused by flammable solvents such as thinner and benzene
- Problem caused by the use of wrong voltage
- Loss of parts or damage caused by the disassembly of the product by the customer
- Problem caused by the reassembly of the product by the customer
- Problem caused by natural disasters (lightning, fire, storm and flood, gas, sea wind, earthquake)
- Problem caused by the customer's failure to follow the Cautions indicated in the User Manual (if the customer follows the Cautions in the User Manual, the product can be used for a long time)
- Problem caused by other mistakes committed by the customer

Customer Center **TECHNONIA** <http://www.technonia.com>
Address : #1101, HANSIN IT TOEWR 235, GURO-DONG, GURO-GU, SEOUL, KOREA
Telephone : 02-2108-8123 / Fax : 02-2108-8120

This user manual may be changed without prior notice to improve product performance.
The images included in this guide could be different from the actual image and may change without notice.

Product Package



※ The items in the package may change without notice for better performance.

Feature Description

LED Indicator

There is an LED light in the middle of the front.
Bluetooth Speaker. Below are what the LED's various displays indicate.

- LED OFF - Power OFF
- Flashing BLUE - Power ON
- Flashing BLUE/RED - Pairing mode
- Flashing RED - Low battery level
- Full charged - under power on condition, only blue light flashing, but if the speaker is power off, then no light flashing
- RED - Battery is recharging

Set-up and Pairing via Bluetooth For Music Playback and Hands-free Calling

NOTE: Bluetooth Speaker can pair with most Bluetooth 2.0 devices. Pairing may vary by device. Consult your Bluetooth device's owner's manual for pairing instructions.

Putting Bluetooth Speaker Into Pairing Mode

1. Turn on the main power switch on the back of Precision Bluetooth Speaker.
2. Press and hold down the "●" button for 2 seconds until the light on the front starts blinking red and blue. This indicates that it is in pairing mode.
3. Once the device has found the speaker, select SH-200. Some device may require pair code to be input, enter 0000.

NOTE : Bluetooth Speaker will stay in pairing mode for 3 minutes. If you do not complete the next steps before then, simply turn Bluetooth Speaker main power switch to OFF and then back to ON, and repeat step 2.

Taking Calls on Connected to Bluetooth Speaker

When you receive an incoming call, an alert will sound from Bluetooth Speaker.
If you are listening to music from your Phone, the music will automatically pause.
to accept a call: press "●" button for one time, just speaker as usual. You shall hear the calling party from the speaker and your voice is transferred by the internal microphone.
to end a call : Use your Phone controls or press the "●" button.
to recent call: Press "●" button for twice to call the last called number .

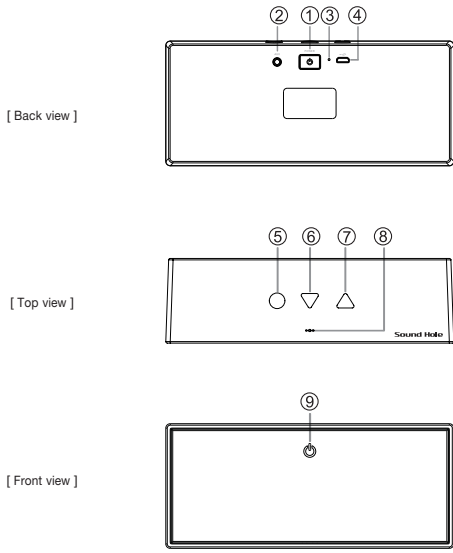
Controlling Playback When Connected Via Bluetooth

VOLUME : Using the volume controls on the top of Bluetooth Speaker, push the "▲" button to increase volume and the "▼" button to decrease volume.
PAUSE MUSIC : Press the "●" button then use pause playback. Repeat to resume music.
PLAYBACK CONTROL : push and hold "▼" / "▲" button for 2 seconds then you can control next and previous skip control.

Recharging Battery

Plug the Micro USB end of the included USB cable into the USB port, marked " " on the back of Bluetooth Speaker.
Plug the other end into a USB port on your computer or other devices made for USB charging.
The LED light will begin to RED. Charge time is 3 Hours from an empty battery.

Product Overview



- | | |
|---------------------|--------------------|
| ① Power ON/OFF | ⑥ Volume (-) / REW |
| ② Line in | ⑦ Volume (+) / FF |
| ③ Reset | ⑧ MIC |
| ④ USB for Charging | ⑨ LED |
| ⑤ Talk (Play/Pause) | |

Troubleshooting

Symptoms	Notes/Solutions
Sound is very low or no sound	<ul style="list-style-type: none">- Please check Bluetooth Speaker or Bluetooth device Volume Level- If using 3.5 mm port, be sure the min jack cable is securely inserted into Bluetooth Speaker
Music is playing on a device but isn't transferring to Bluetooth Speaker	<ul style="list-style-type: none">- Make sure your Bluetooth device has A2DP (check your device's owner's manual)- Be sure the device is paired- If using 3.5 mm port, be sure the mini jack cable is securely inserted into Bluetooth Speaker and your device
LED light not on	<ul style="list-style-type: none">- Make sure Bluetooth Speaker main switch is ON- Make sure Bluetooth Speaker is charged
Hands-free calling is not working with mobile phone	<ul style="list-style-type: none">- Make sure your mobile device has HSP/HFP- Be sure your mobile phone is paired- Check volume on Bluetooth Speaker

FCC Statement:

This device complies with Part 15 of the FCC Rules. Operation is subject to the following two conditions: (1) this device may not cause harmful interference, and (2) this device must accept any interference received, including interference that may cause undesired operation.
Changes or modifications not expressly approved by the party responsible for compliance could void the user's authority to operate the equipment.

Features and Benefits

- Bluetooth 2.1 with SoundHole audio and digital signal processing for clean, best-in-class wireless stereo sound.
- Built-in mic with advanced noise-cancellation enables clear wireless hands-free calling and conferencing.
- Convenient charging with included mini USB charging cable
- Rechargeable Lithium Ion battery for up to 10 hours of playtime.
- Connects to iPod or any device with a 3.5 mm headphone port using a mini jack cable (cable not included)
- Auto-search and auto-reconnect with compatible device.

Compatibility

- Wireless : Devices with Bluetooth 2.0 or above, such as iPad, iPhone and most Bluetooth equipped smart phones or computers.
- Wired : Devices with a standard 3.5 mm headphone output port such as iPod via 3.5 mm mini jack cable (not included).



WARNING

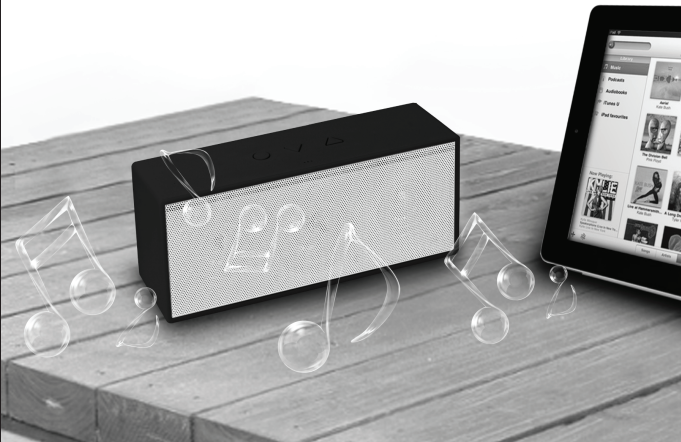
1. Do not become distracted by this product while driving.
2. Do not leave the product exposed to a heat source or high temperatures.
3. Do not remove or attempt to remove the non-user-replaceable battery. When disposing of the product, take it to a waste electronics service.
4. Please remember that a loose object in a moving vehicle could become a deadly projectile in the event of a collision.

TECHNONIA

Quick Guide

SOUND HOLE

(SH-200)



Before using the product, "Safety Precautions" should be read.

※ Product warranty is included in this manual.

FCC STATEMENT

1. This device complies with Part 15 of the FCC Rules. Operation is subject to the following two conditions:

(1) This device may not cause harmful interference.

(2) This device must accept any interference received, including interference that may cause undesired operation.

2. Changes or modifications not expressly approved by the party responsible for compliance could void the user's authority to operate the equipment.

NOTE: This equipment has been tested and found to comply with the limits for a Class B digital device, pursuant to Part 15 of the FCC Rules. These limits are designed to provide reasonable protection against harmful interference in a residential installation.

This equipment generates uses and can radiate radio frequency energy and, if not installed and used in accordance with the instructions, may cause harmful interference to radio communications. However, there is no guarantee that interference will not occur in a particular installation. If this equipment does cause harmful interference to radio or television reception, which can be determined by turning the equipment off and on, the user is encouraged to try to correct the interference by one or more of the following measures:

- Reorient or relocate the receiving antenna.

- Increase the separation between the equipment and receiver.

- Connect the equipment into an outlet on a circuit different from that to which the receiver is connected.

- Consult the dealer or an experienced radio/TV technician for help.