

Audio-Mate Stereo Headset With Bluetooth Dongle

User Manual

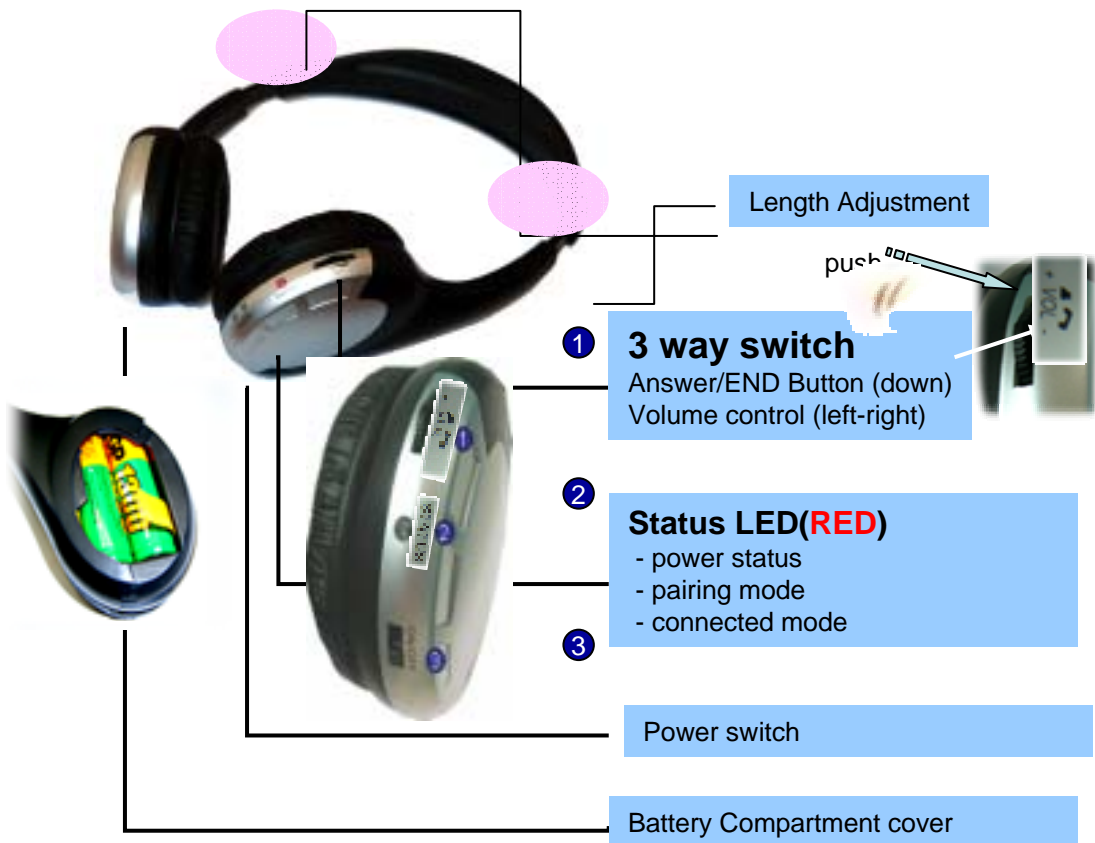


Contents

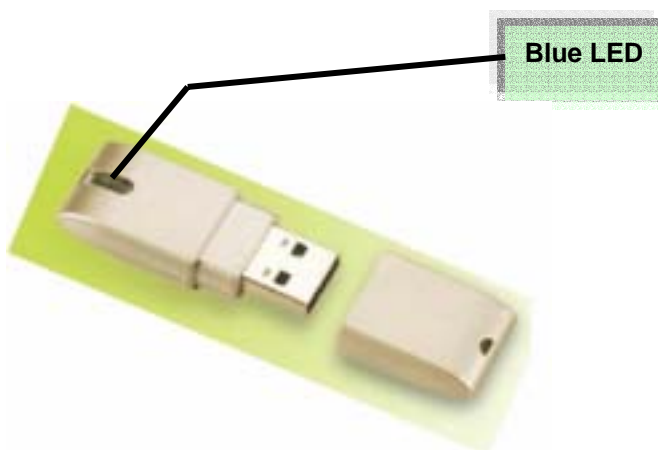
1. Introduction	3
2. BOX Package	4
3. Getting Started	5
3.1 Preparation	5
3.2 How To Use Bluetooth Headset & Bluetooth USB Dongle.....	7
3.2.1 Connect Bluetooth Headset With Bluetooth USB Dongle.....	7
3.3 Current Support Phone List.....	10
3.4 The Power Source of the Devices.....	11
3.4.1 Bluetooth Headset Power.....	11
4. Versatile Applications	12

1. Introduction

Audio-Mate Stereo Headset



Bluetooth USB Dongle (BQB 1.2)



2. Package

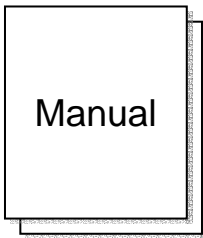
1. **Audio-Mate Stereo Headset** * 1
 2. **Bluetooth USB Dongle*** 1
 3. **Manual** * 1
 4. **Driver CD** * 1
-



a. Stereo Headset *1



b. Bluetooth USB Dongle * 1



c. Manual *1



d. Driver CD * 1

Safety information

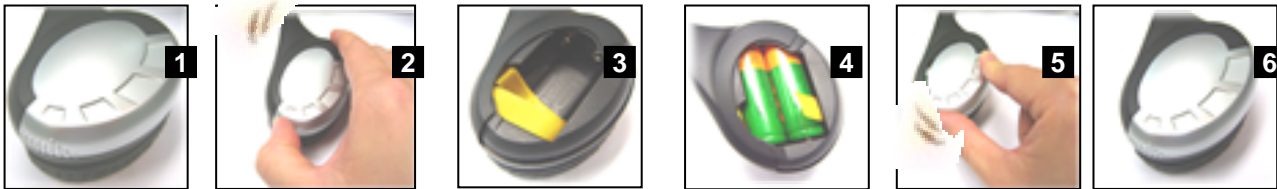
1. Don't use the headset phone and transmitter inside hospitals , airplanes or in the vicinity of other emergency systems.
2. Keep away from the strong radio system, to ensure the single quality
3. Continuous listening of music at a high volume may cause damage to your ears.
4. Never use the Bluetooth Headphones while driving.

3. Getting Started

3.1 Preparation

-Audio-Mate Stereo Headset

1. Open the battery compartment cover.
2. Insert 2X AA batteries into battery compartment.
Make sure the plus and minus poles of battery was correctly touched their contacts.
3. Close the battery compartment cover with a click.



- Bluetooth USB Dongle

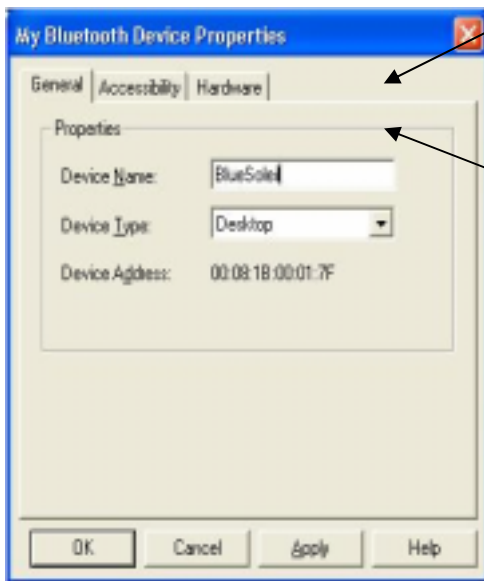
Software Installation

1. Insert the “Manual & Driver CD-ROM” into the CD-ROM driver of your PC, and you’ll see the software installation window as shown below..



2. Click “Setup Driver & Tools”, and choose the “default” item through the installation process.
3. Reboot your PC

4. Plugging Bluetooth USB Dongle, you'll see the window as shown below..



The Local device's name which will be shown to other Bluetooth enabled devices.

The device's type of your local Computer (i.e., Desktop , laptop or server)

5. After successful installation, you'll see the new icon appears in the Icon Tray.



If the installation fail, Please refer to the User Manual in “Manual & Driver CD-ROM” for solution.

Note

This dongle has been recognized with the International Standard Organization for **BQB/FCC/CE** certifications and it is compatible with most of the Bluetooth enabled devices.

However, the following situations might occurred:

1. Due to the limitation on Operating Systems, AV and Headset Profiles cannot be supported by Win98SE/ME.
 2. During the time of running Windows 98SE/ME; due to the OS limitation, the situation of “system exception” might be occurred:
 - a. If it happened during the process of “driver installation, please uninstall the software and reinstall it back.
 - b. If it happened after completing the “driver installation”, please reboot your computer.
 3. In order to avoid system conflict, it is suggested to remove the previously installed Bluetooth software.
- For more details or more language supports, please refer to CD contents.

3.2 How To Use Audio-Mate Headset & Bluetooth USB Dongle

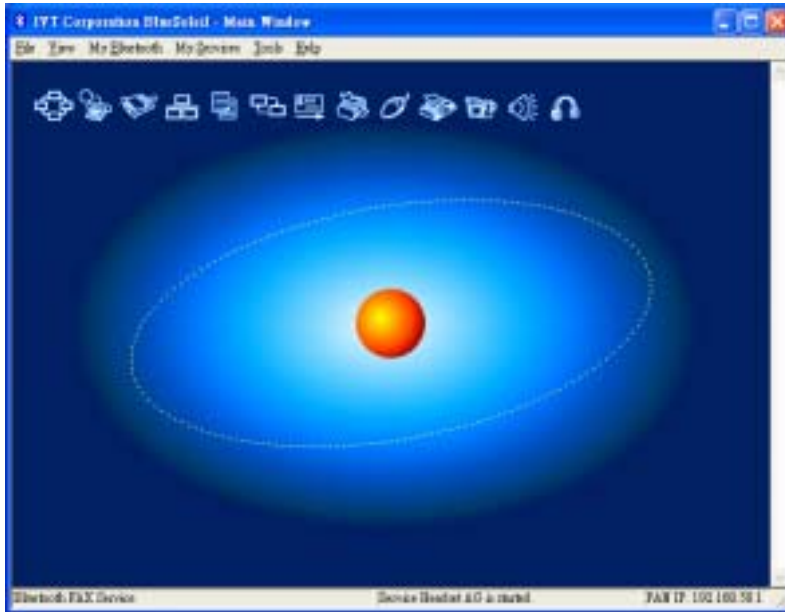
3.2.1 Connect Audio-Mate Headset with Bluetooth USB Dongle

1. Turning on the audio-mate Headset Power-On Switch, the Power-On LED will start **rapid flashing** that is into standby mode for paring.

2. Double click 'Bluetooth Devices'  icon in the Icon Tray.

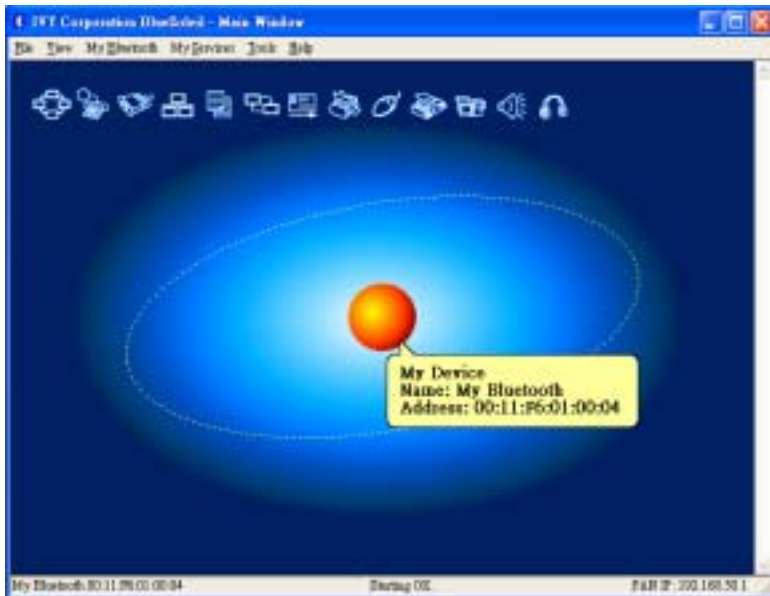


3. you'll see the Bluetooth software window as shown below..

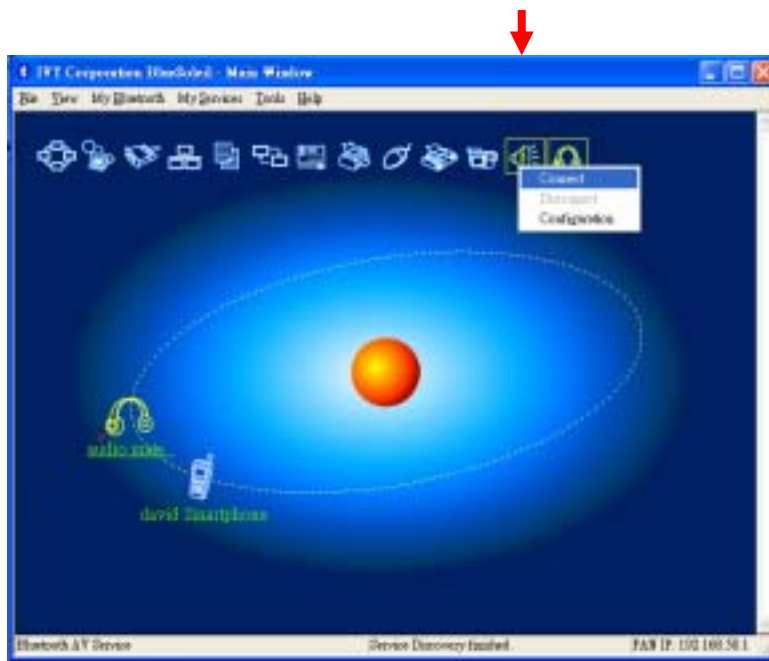


4. Hover the mouse over the My Device icon to display the client Bluetooth device name and address.

5. Double-click to start/ stop searching for surrounding Bluetooth devices.



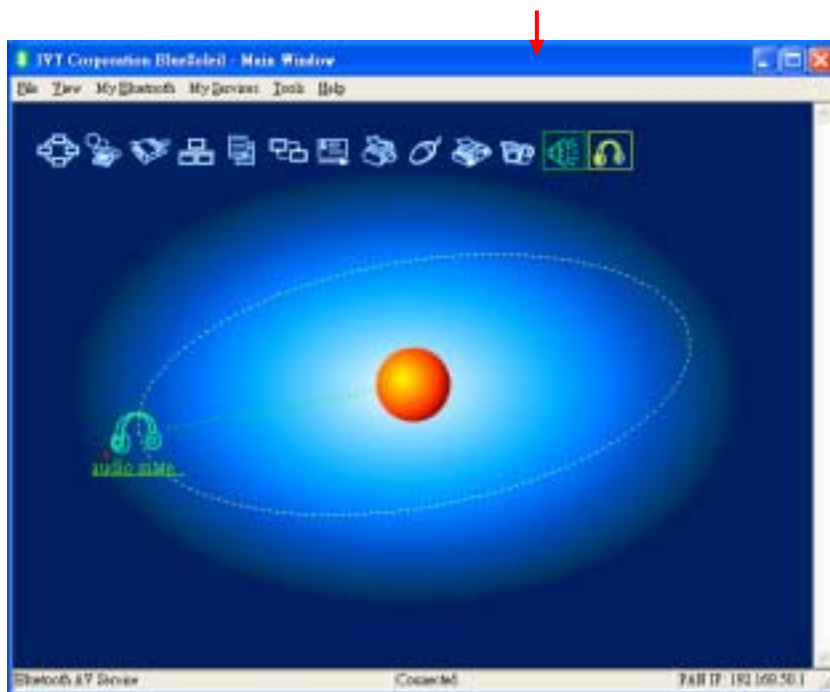
6. Find the AV Headphone service of AV Headphone (audio mate).



- ◆ Double-click the AV Headphone device icon on Computer.
- ◆ Enter the Bluetooth passkey (“0000”)
(if security is set to **High** on either side) to start authentication.
- ◆ Once authentication is complete, the AV Headphone service is found.

7. Connect to Audio-Mate Headphone.

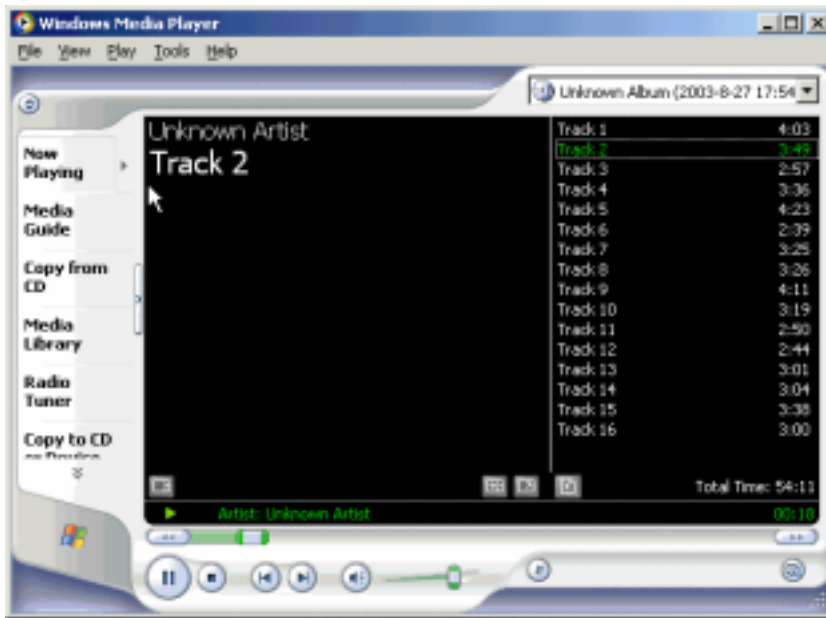
- ◆ Right-click the Audio-Mate Headphone service icon; select **Connect** on the pop-up menu. The connection will be established.



Using the Audio-Mate Headphones to Listen to Stereo Audio

All the audio media played on Computer can be heard on AV Headphone.

- ◆ Open music files (e.g. mp3, CD, rm etc.) with Windows Media Player or RealOne Player or other media player and play them, the music can be heard on AV Headphone .
- ◆ When playing VCD or DVD on Computer, the audio part can be listened on AV Headphone.



Listening Mobile Phone

- Please follow the below steps to connect your mobile phone with the Bluetooth Headset:
If you wish to use Handsfree function to answer the mobile phone while music playing, **please do pair your mobile phone and headset before pairing Bluetooth dongle and headset.**
- Auto sound notify when your mobile phone call in. Push straight inwards to pick up the incoming call & push it again to hang up & recover the music at the same time.
Some mobile phone may terminate the music source while answering the phone call; under such circumstance, please do reconnect again the music source.

3.3 Current Support Phone List:

Nokia

3650/3660/6230/6600/6820/7610/6310i/N-Gage/7610/6670/6670b/9300/6630
Future : 7710/9500

Motorola

V600 /V500 /V525 /V80 /A630 /V620 /E550 /V535 /V545 /V550 /V600i/A768i/V3/E398
V710 CDMA 2000 Phone/V3/V330
Future : A780/E680/V547/Matta/V400/V635/A925/A835/E815/M1000/A1010/V2000
/MPX100/A860/i603/MPX200

Sony Ericsson

T68i/T610/T630/Z600*/P800/P900/T610/Z600/S700/S700c/K750/V800/W800/
S700i/P900
Future : K700

Siemens

U15/SX1

Panasonic

EB-X70/FJ505
Future : X700

Fujitsu

F900iT/FJ505

BlackBerry

7100t

Toshiba

e8xx/W21T/A5504T

Samsung

SPH-V6900
Future : SGH-D500/SGH-620/SHG-880/SPH-G1000/SCH-G1000/SGH/Z140/
ZGH-D600/SGH-800

PalmOne

Treo650

LG

Future : PM325

Dopod

565/575/585

Attention :

1. If you want use this function to mobile phone talked and listened, please check the mobile phone has Bluetooth headset function before.
2. All of the mobile phone maker may have difference pairing procedure between headset and mobile phone.
3. About the paring procedure between headset and mobile phone , please check the function by your mobile phone users manual.

3.4 The Power Source of the Devices

Audio-Mate Headset Power

The **Audio-Mate** Headset requires 2 standard replaceable AA+ batteries. Any compatible rechargeable battery can be used for this model.

Please follow below steps to change audio-mate Headset Batteries:

- Turn off the power.

- Holding the audio-mate Headset with both hands as shown in below picture.

- Gently use both thumbs slide outwards to open the battery cover.

- Open the battery cover on the end where no any switch on to remove & replace the batteries.

- Close the battery cover by using the same way to slide the cover inwards to fit in.

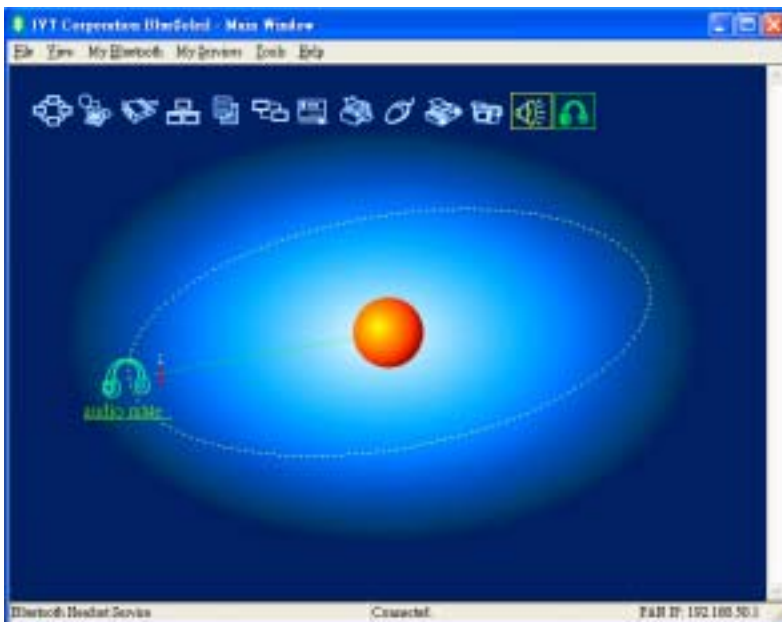
4. Versatile Applications

4.1 Using the Headphones to Listen to Stereo Audio (CD, DVD, HDD Music, Online Music etc)

1. Make a Stereo connection to the Headphones as above.
2. Open Windows® Media Player or any other media player to play CD Music, Movies or Music stored in HDD or even stream from the web straight to your headphones.

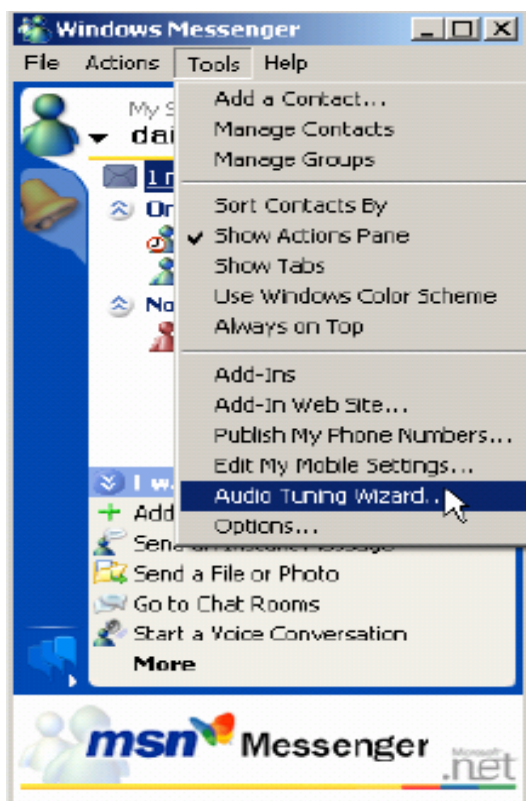


4.2 Using the Audio-Mate for Voice Chatting via Online Messenger

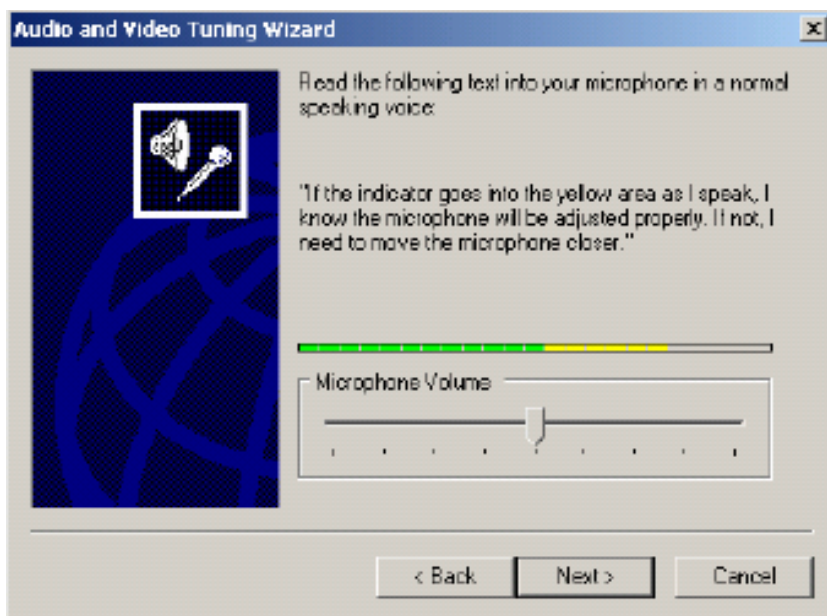


1. Make a Voice Connection as above.

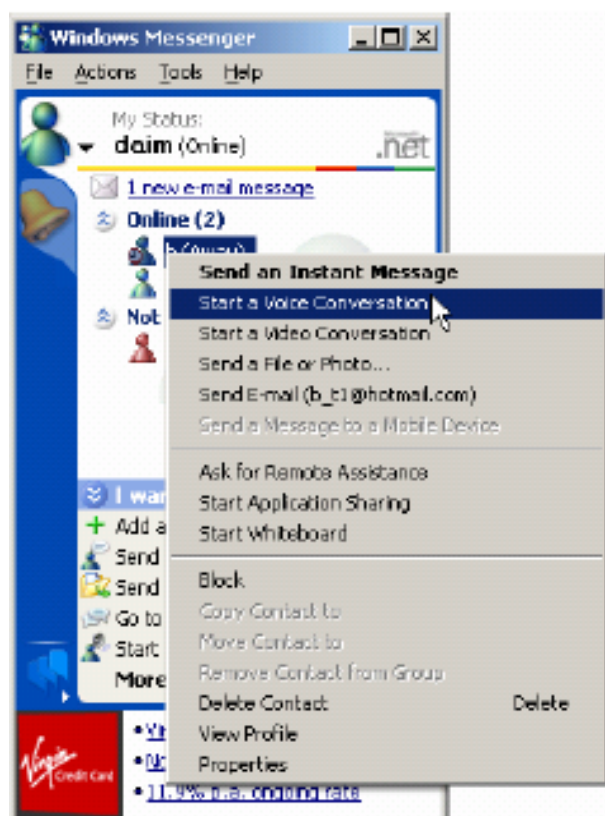
2. Open Windows® Messenger. For MSN messenger, use version 6.0 or higher.
3. Select '**Audio Wizard**' from messenger Tools



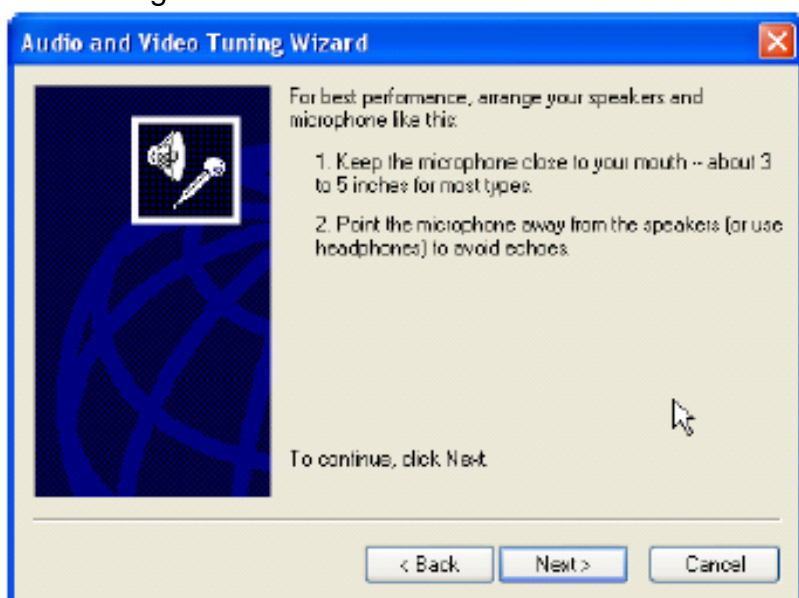
4. If both speaker and microphone function properly click Next.



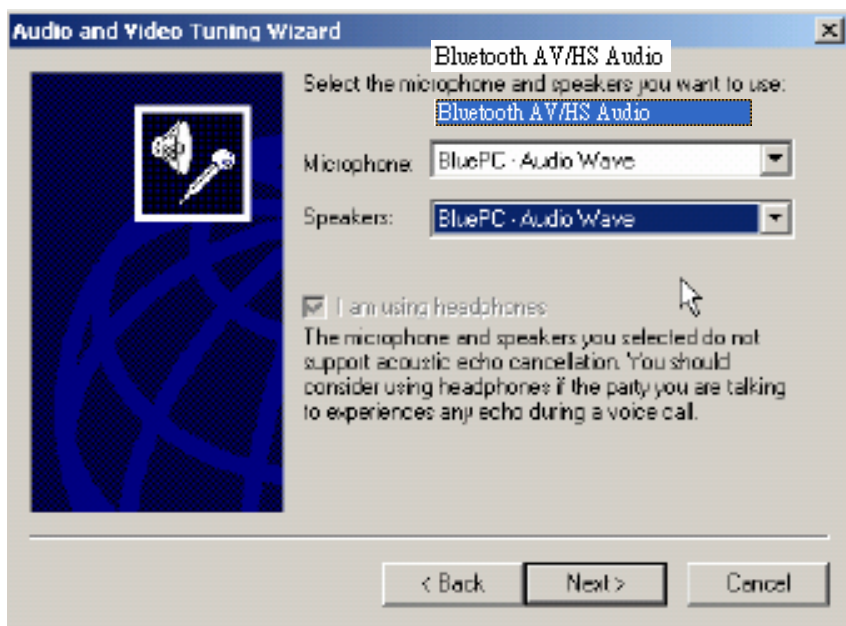
5. Click Finish to from MSN Messenger,
6. Right Click on a contact "Start Voice Chat"



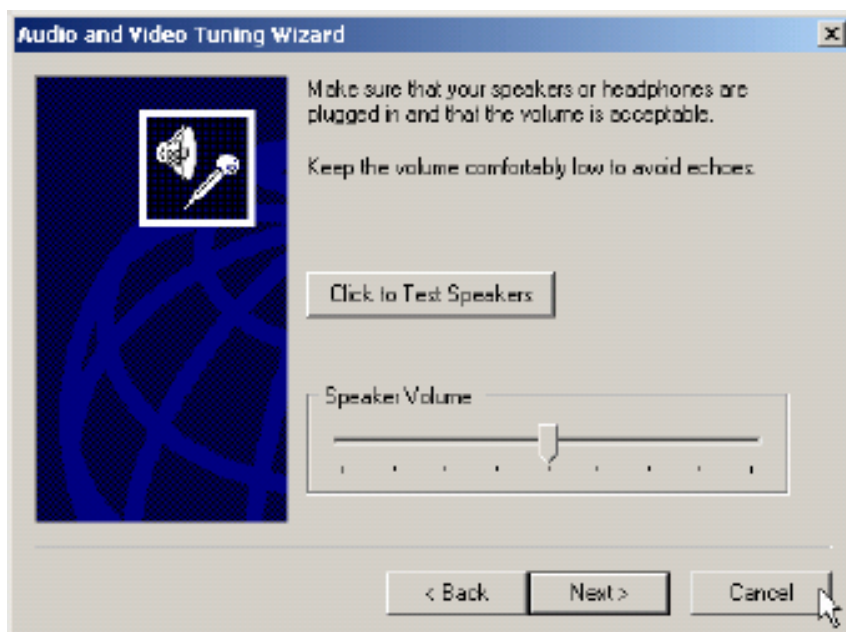
7. When the Audio Wizard appears, click Next.
8. Click Next again.



9. Select “Bluetooth AV/HS Audio” for both speaker and microphone. Click Next.



10. Test if speaker and microphone are functioning properly.



4.3 BLUETOOTH MOBILE PHONE HANDSFREE

(Refer also to your phone manual as this procedure differs from one phone to another).

1. Pairing Audio-Mate headset with Mobile Phone

1. Turning on the audio-mate Headset Power-On Switch, the Power-On LED will start **rapid flashing** that is into standby mode for pairing.
2. In your phone's Menu find Bluetooth and turn ON, **Make sure your phone is visible to other devices.**
3. In your phone, Search for a New Paired device. Phone will now search for devices.
4. Select device AV Headphones and enter password **"0000"**. This completes pairing.
5. Select AV Headphones options and 'set as authorized' for automatic connections.
6. Now select 'Connect' (some phones don't require this last step).



2. Using the Headphones to Make a Call

1. To make a call, follow the normal procedures of a mobile phone. Make sure the Headphones and mobile phone are in connection mode.
2. The user can use either mobile phone or Headphones to communicate. To talk over the Headphones, press the **'Answer/END'** button.
3. To talk over the Headphones while talking in phone mode, press the **'Answer/END'** button of Headphones.
4. Likewise, to talk over the mobile phone while talking in Headphones mode, the call transfer function can be used. (Refer to phone manual as the procedures may differ from phone to phone)
5. To disconnect a call while talking in Headphones mode, press the **'Answer/END'** button.



6. Receiving a Call while Listening to Music

If a call is being received while listening to music the music will stop with a bell tone ringing from the speaker. To answer the call, press the **'Answer/END'** button on the Headphones

Federal Communication Commission Interference Statement

This equipment has been tested and found to comply with the limits for a Class B digital device, pursuant to Part 15 of the FCC Rules. These limits are designed to provide reasonable protection against harmful interference in a residential installation. This equipment generates, uses and can radiate radio frequency energy and, if not installed and used in accordance with the instructions, may cause harmful interference to radio communications. However, there is no guarantee that interference will not occur in a particular installation. If this equipment does cause harmful interference to radio or television reception, which can be determined by turning the equipment off and on, the user is encouraged to try to correct the interference by one of the following measures:

- Reorient or relocate the receiving antenna.
- Increase the separation between the equipment and receiver.
- Connect the equipment into an outlet on a circuit different from that to which the receiver is connected.
- Consult the dealer or an experienced radio/TV technician for help.

FCC Caution: Any changes or modifications not expressly approved by the party responsible for compliance could void the user's authority to operate this equipment.

This device complies with Part 15 of the FCC Rules. Operation is subject to the following two conditions: (1) This device may not cause harmful interference, and (2) this device must accept any interference received, including interference that may cause undesired operation.

This equipment complies with FCC RF radiation exposure limits set forth for an uncontrolled environment. To maintain compliance with FCC RF exposure compliance requirements, please avoid direct contact to the transmitting antenna during transmitting .