



Thank you for purchasing the Bluetooth v2.0 +EDR Dongle. We hope you will enjoy the most advanced Bluetooth technology with it. The package includes a Bluetooth V2.0+EDR Dongle, which provides users a full range of Bluetooth features with computer devices. Please read the user manual to make the best use of Bluetooth v2.0 +EDR Dongle and its many features.

■ Package Contents

- ◆Bluetooth 2.0+EDR USB 2.0 Dongle
- ◆Quick Installation Guide
- ◆CD-ROM (User Manual/Driver/Utility)

Note

- The Bluetooth Utility operates under Windows XP and Windows 2000.
The descriptions in the examples mainly pertain to operation under Windows XP.

Windows XP: Microsoft® Windows® XP Operating System

Windows 2000: Microsoft® Windows® 2000 Operating System

FEDERAL COMMUNICATIONS COMMISSION

This device complies with Part 15 of the FCC Rules. Operation is subject to the following two conditions:(1) this device may not cause harmful interference, and (2) this device must accept any interference received, including interference that may cause undesired operation.

NOTE

This equipment has been tested and found to comply with the limits for a Class B digital device, pursuant to Part 15 of the FCC Rules. These limits are designed to provide reasonable protection against harmful interference in a residential installation. This equipment generates, uses and can radiated radio frequency energy and, if not installed and used in accordance with the instructions, may cause harmful interference to radio communications. However, there is no guarantee that interference will not occur in a particular installation. If this equipment does cause harmful interference to radio or television reception, which can be determined by turning the equipment off and on, the user is encouraged to try to correct the interference by one or more of the following measures:

- Reorient or relocate the receiving antenna.
- Increase the separation between the equipment and receiver.
- Connect the equipment into an outlet on a circuit different from that to which the receiver is connected.
- Consult the dealer or an experienced radio/TV technician for help.

Changes or modifications not expressly approved by the party responsible for compliance could void the user's authority to operate the equipment.

The antenna(s) used for this transmitter must not be co-located or operating in conjunction with any other antenna or transmitter.

Software Installation

Note: Make sure the Bluetooth USB Adapter is unplugged. To install the software, please follow the instruction below.

1. Insert the Toshiba Bluetooth driver installation CD into the CD-ROM. The “InstallShield Wizard” should start automatically. If it does not load, please run the “Setup.exe” file from the CD drive.

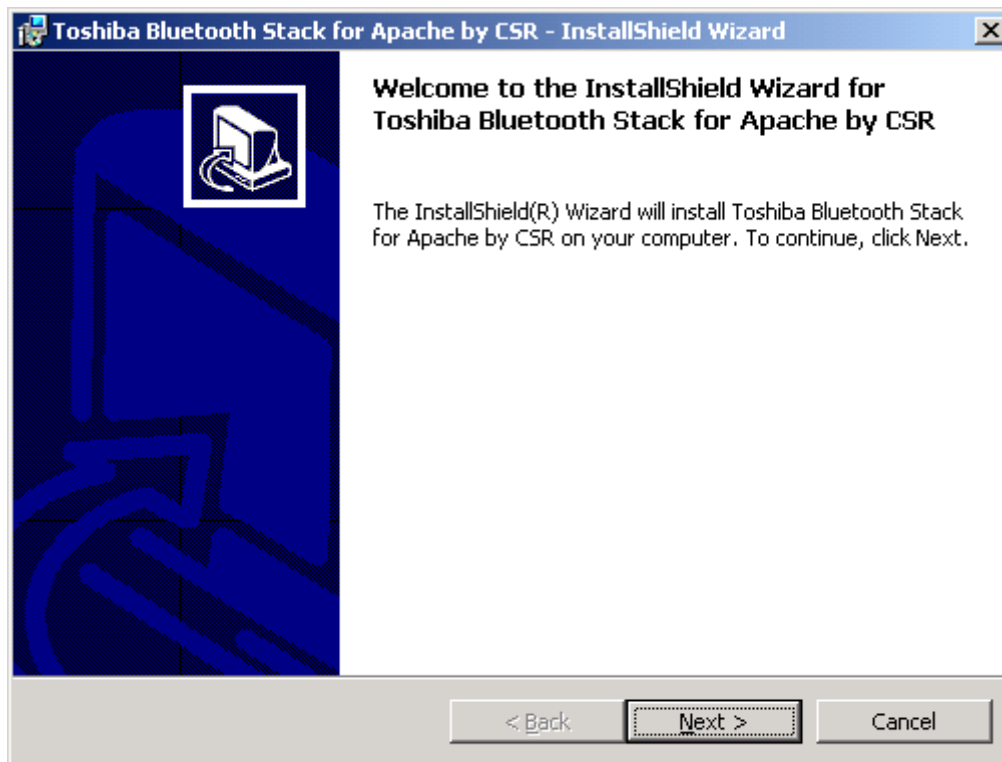


2. A setup window will pop up. Please choice language to start installation process.

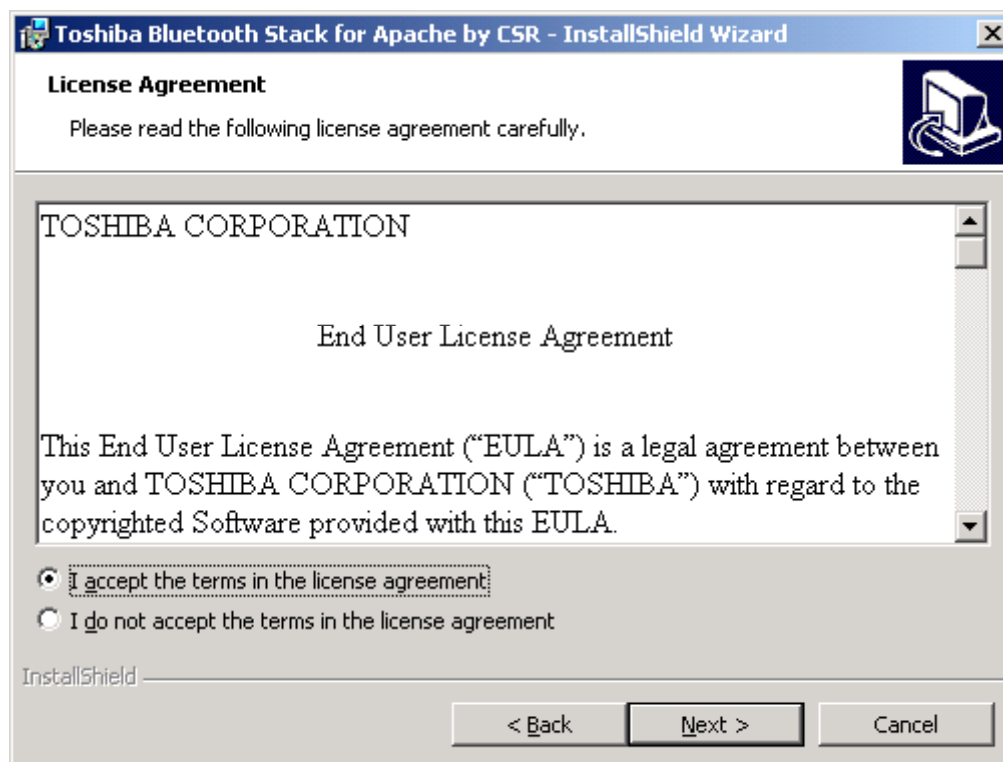


Note: The initial window varies depending on the version of driver you are installing.

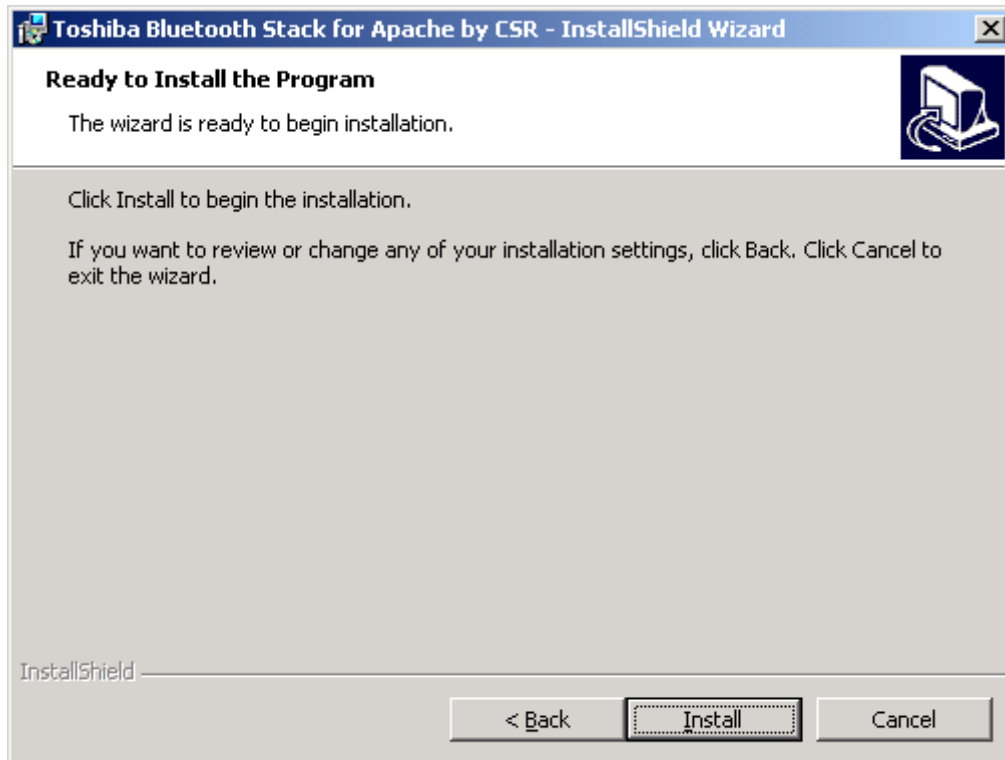
3. The Welcome window should now appear, Click “Next”.



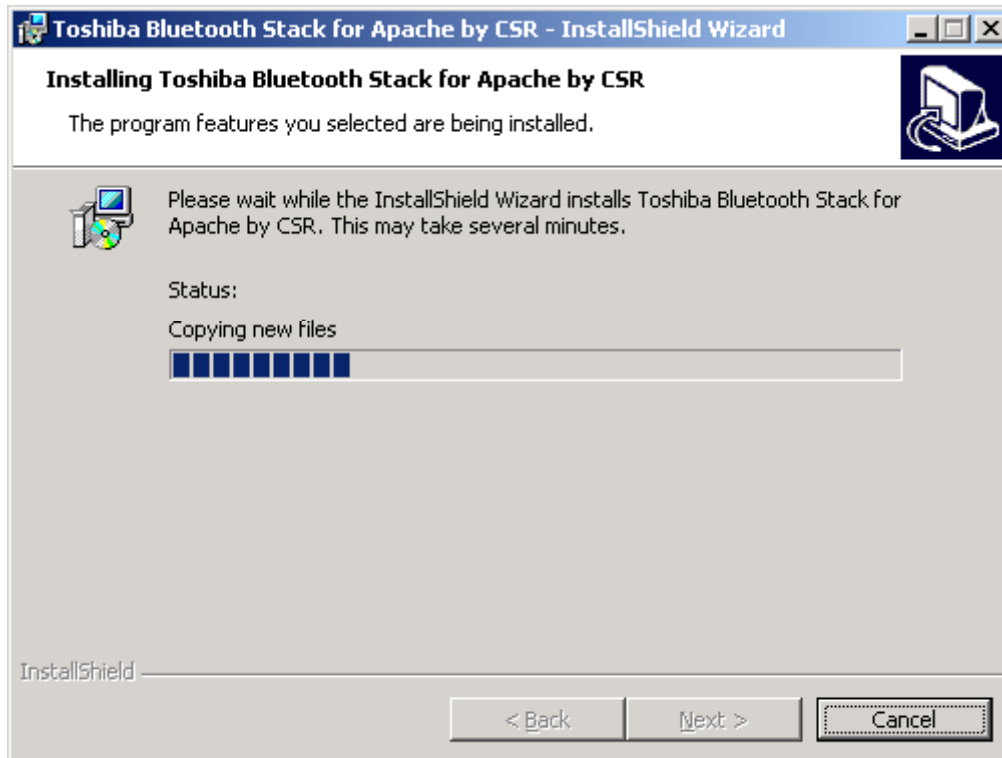
4. Accept the terms in the license agreement then click “Next”.



5. Click “Install” to begin the installation.



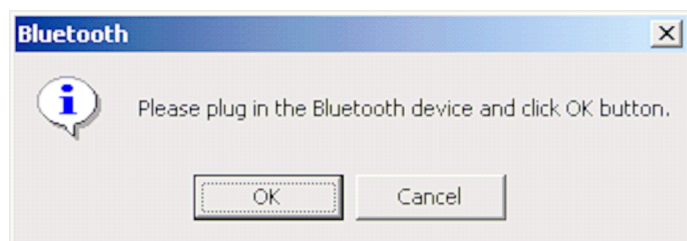
6. Installation is in process.



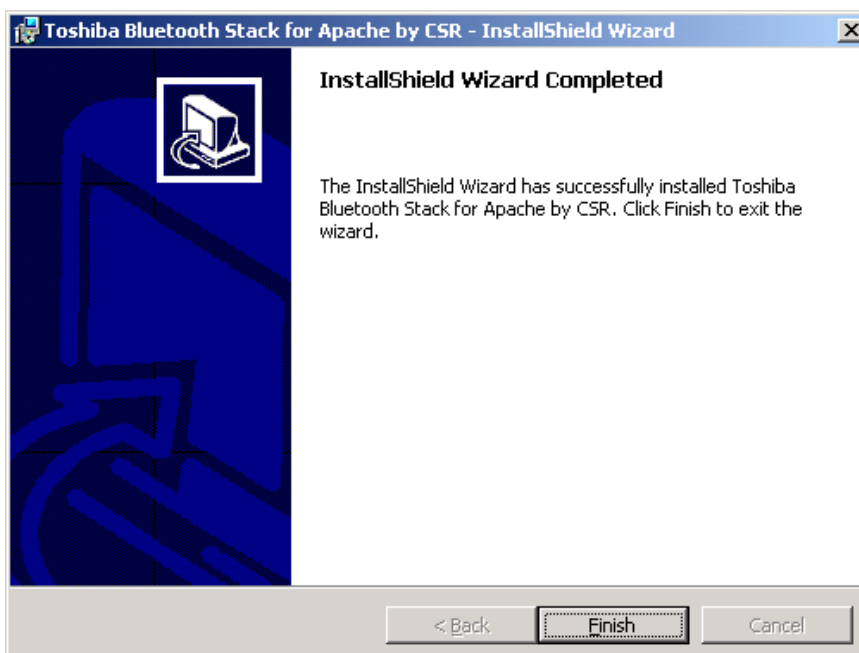
7. Wait for the setup.



8. Plug in the EDR USB adapter and click “OK” to continue the installation.



9. Click “Finish” when the installation is completed.



10. Users will be asked to restart the system. Click “Yes” to restart the computer immediately.

