

獵鷹號

裝配調試說明 Directions for the assembly and adjustment

產品規格 SPECIFICATIONS:

全長: 820mm	上反角: 5°
LENGTH	DIHEDRAL ANGLE
翼展: 1100mm	全重: 500g
WINGSPAN	WEIGHT
翼面積: 14dm ²	電池: 8.4V-600mAh
WING AREA	BATTERY

- ◆SD數碼27兆標準化遙控系統,性能穩定,兼容性強。
- ◆SD第二代數碼比例調速器,反應靈敏,壓降小,抗干擾能力強。
- ◆可更換式晶振,有12個頻道供你隨意變換,令你比賽無憂。
- ◆新款的高性能380馬達,電流小,效率高。
- ◆17g微型舵機,反應靈敏,扭矩大。
- ◆具有優異的滑翔性能,可在上升氣流中進行長時間無動力滑翔。
- ◆凹凸翼型具有良好的低速飛行性能,易于初學者操縱。
- ◆低重心設計,使飛機進入螺旋時可輕易自動退出。
- ◆飛機滑翔時,螺旋槳可自動折疊,減小阻力。

- ◆The SD 27MHz digital proportional standardized radio control system is stably in characteristic and strong in compatibleness.
- ◆The SD second-generation digital proportional motor controller has sensitive reaction, low voltage drop and strong anti-interference.
- ◆Interchangeable crystal with 12 channels to transform optionally, making you worriless in competitions.
- ◆The new high performance turbo 380 motor use low electric current but gives out high power.
- ◆The 17g micro servo has sensitive reaction and large output torque.
- ◆It has excellent gliding function, and it can glide without moving force for a long time in the rising air current.
- ◆The concavo-convex aerofoil has good low-speed flying function. And it is easy for the beginner to operate.
- ◆The plane can withdraw easily when it is in spiraling state with its low-barycenter designation.
- ◆The propeller can be folded automatically when the plane is gliding so as to reduce the resistance.



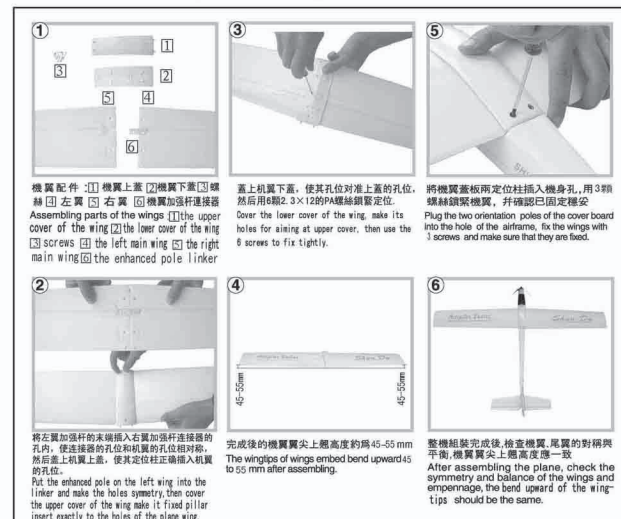
(一) 尾翼安裝

The assembly of the empennage



(二) 機翼安裝

The assembly of the wings



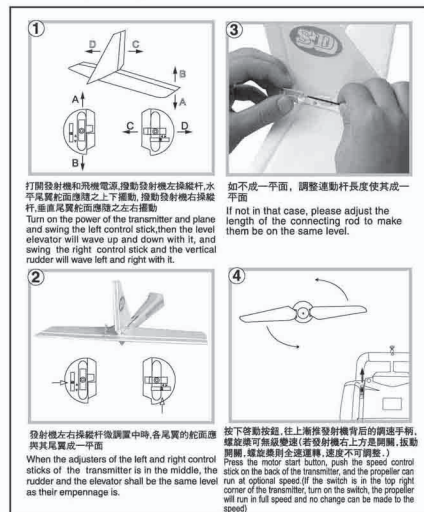
(三) 充電及通電操作順序

Operation order of electrification



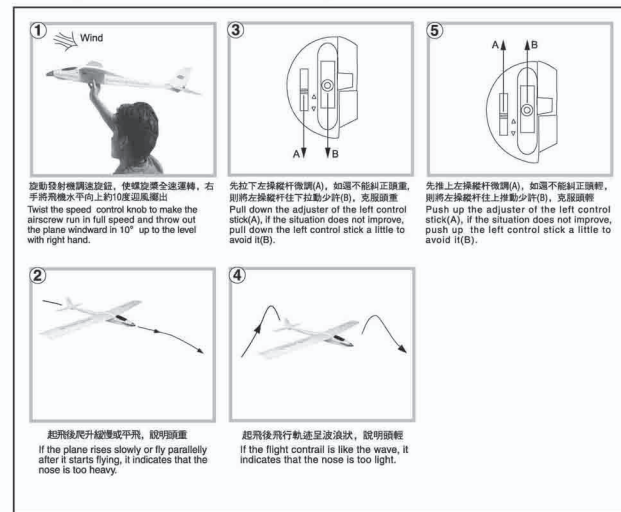
(四) 通電檢查和舵面調整

Checking the electrification and adjusting the rudder board



(五) 手擲起飛頭重頭輕調整

Adjustment if the nose is too heavy or the nose is too light when the plane's being thrown out.



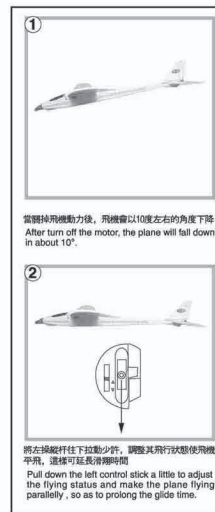
(六) 左右偏向調整

Adjustment for the left or right deflection



(七) 無動力滑翔水平舵面的調整

Adjustment for level elevator in no-drive glide



飛行注意事項:

- *起飛前,注意先開發射機電源,後開飛機電源。降落後,注意先開飛機電源,後開發射機電源。
- *飛行條件—請選擇5級以下風力,初學者3級以下風力,30米左右半徑場地。
- *手擲起飛用力太小或向上擲出角度太大,會使飛機失速導致起飛失敗。
- *當飛機爬升到20米以上時方可慢慢打舵轉彎。
- *當飛機因受氣流影響或操作不當進入螺旋時,立即放開兩操縱杆,讓飛機自動退出螺旋。
- *盡量將飛機逆風飛到上風口盤旋,以免高空風大,將飛機吹走。
- *當發射機紅燈閃爍並發出“滴滴”報警聲時,表示發射機電力不足,請盡快降落,以免飛機失控。
- *飛機降落時也要迎風滑翔,以便飛機緩慢、平穩降落。
- *嚴禁在機場、電力線附近飛行,且遠離人群聚集的地方。
- *不要觸摸旋轉中的螺旋槳,以免受傷。

本模型適合14歲以上人士,未成年須由家長協助陪同

Notes for the flying:

- * Before flying-Off, please turn on the power supply switch of the transmitter firstly, and turn on the power supply switch of the plane later. After landing, please turn off the power supply switch of the airplane firstly, and turn off the power supply switch of the transmitter later.
- * Flying condition: Please choose the wind power below Five degree (for the beginners, choose the wind power of Three degree) and the ground that is about 30 meters in radius.
- * If you throw out the plane without enough strength or throw it out in too big an angle, the plane will stall and fail to fly off.
- * Slowly swerve plane only after it rises up above 20 meters.
- * When the plane enters into helix because of the air current or incorrect operation, please release the two control sticks, leave plane to retreat from the helix.
- * Try best to make the plane rise against the wind and hover there, so that the plane would not be blown away by strong wind in the upper air.
- * When the Red led of the transmitter flashes and sounds “di...di...” it indicates that the power is not sufficient, please land the plane as soon as possible in case of the discontrol of the plane.
- * Please glide to land against the wind so that the plane would land slowly and steadily.
- * It is strictly prohibited to fly near the airfield and the electrical lines, and keep away from the places where there are many people.
- * Do not touch the rolling airscrew in order not to be hurt.
- * During the radiated interference, the product will be malfunction, please reset it, then the function will return to normal operation.

This model plane is suitable for the people above 14 years old; children under age should play it with the assistance and accompanying of their parents.

“Modifications not authorized by the manufacturer may void users authority to operate this device.”

NOTE:

This equipment has been tested and found to comply with the limits for a Class B digital device, pursuant to Part 15 of the FCC Rules. These limits are designed to provide reasonable protection against harmful interference in a residential installation. This equipment generates, uses and can radiate radio frequency energy and, if not installed and used in accordance with the instruction, may cause harmful interference to radio communications. However, there is no guarantee that interference will not occur in a particular installation. If this equipment does cause harmful interference to radio or television reception, which can be determined by turning the equipment off and on, the user is encouraged to try to correct the interference by one or more of the following measures:

- Reorient or relocate the receiving antenna.
- Increase the separation between the equipment and receiver.
- Connect the equipment into an outlet on a circuit different from that to which the receiver is connected.
- Consult the dealer or an experienced radio/TV technician for help.