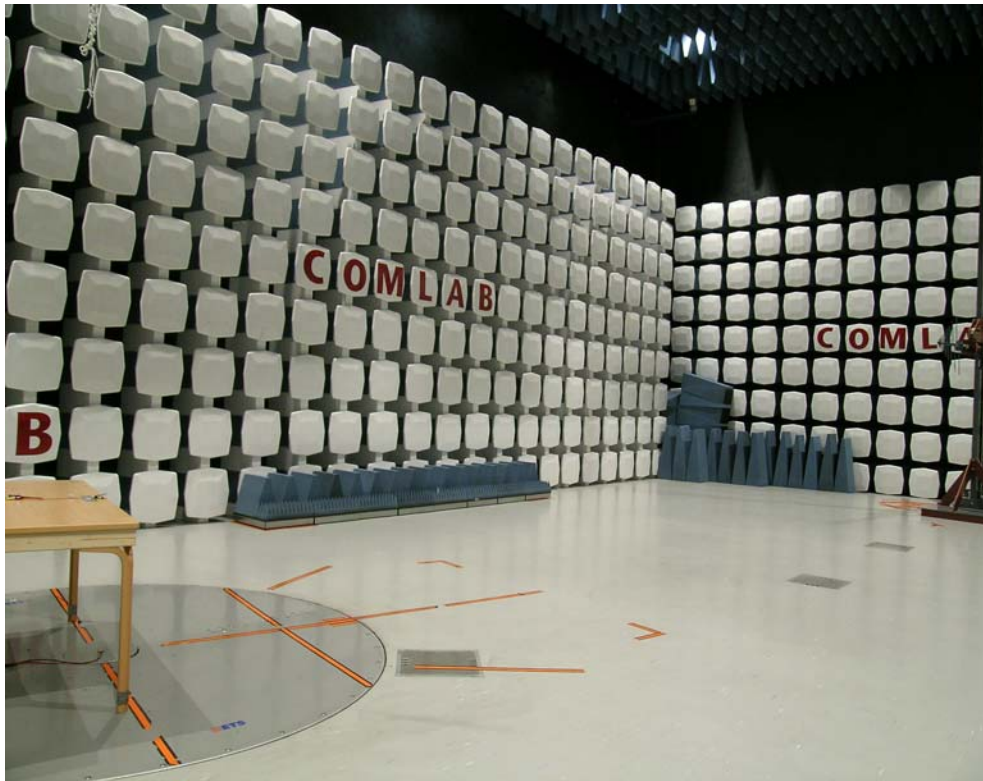


## 6 PICTURES OF TEST SET-UP AND THE TESTED EQUIPMENT



Radiated emissions below 1000 MHz (integrated ant)



Radiated emission above 1 GHz (Integrated ant)



Radiated emission above 1 GHz (detachable ant)

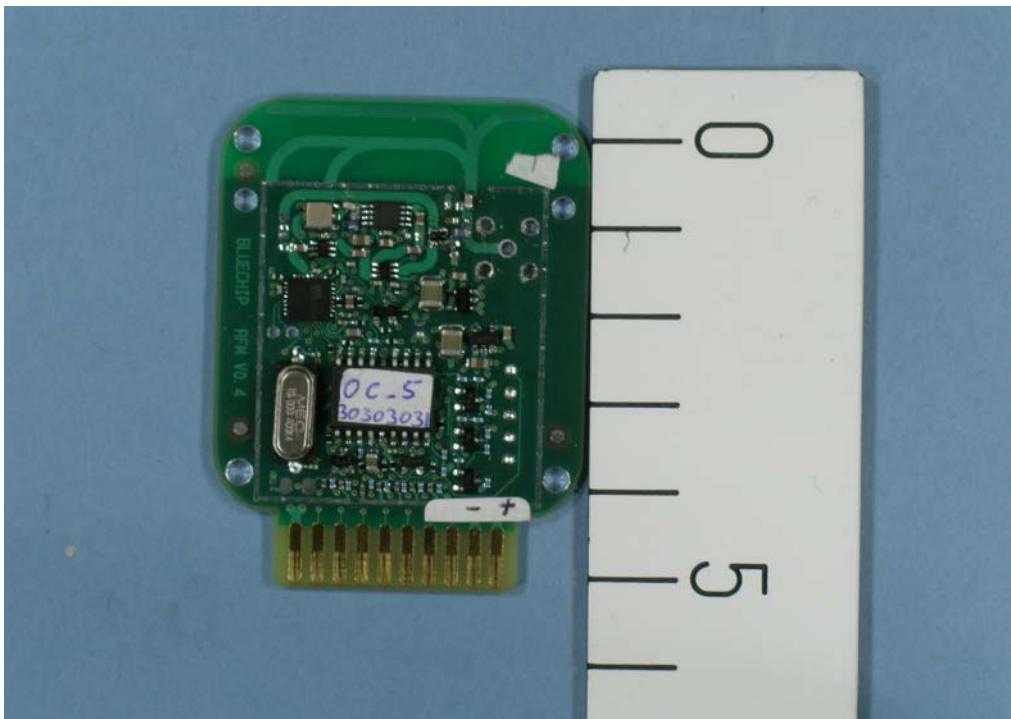


Radiated emissions below 1000 MHz (detachable ant)

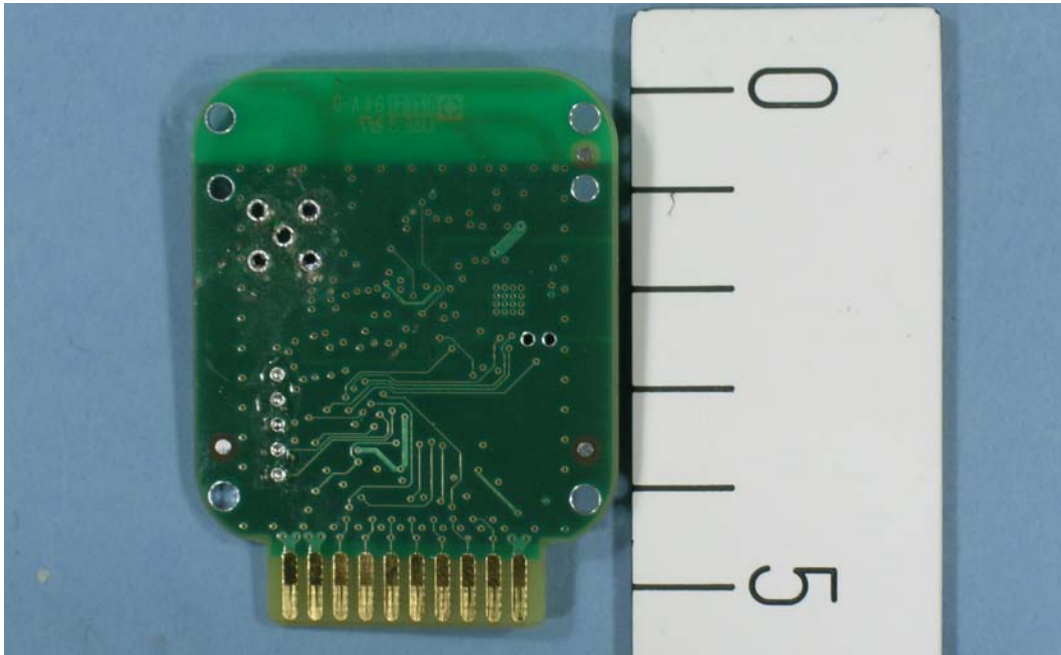




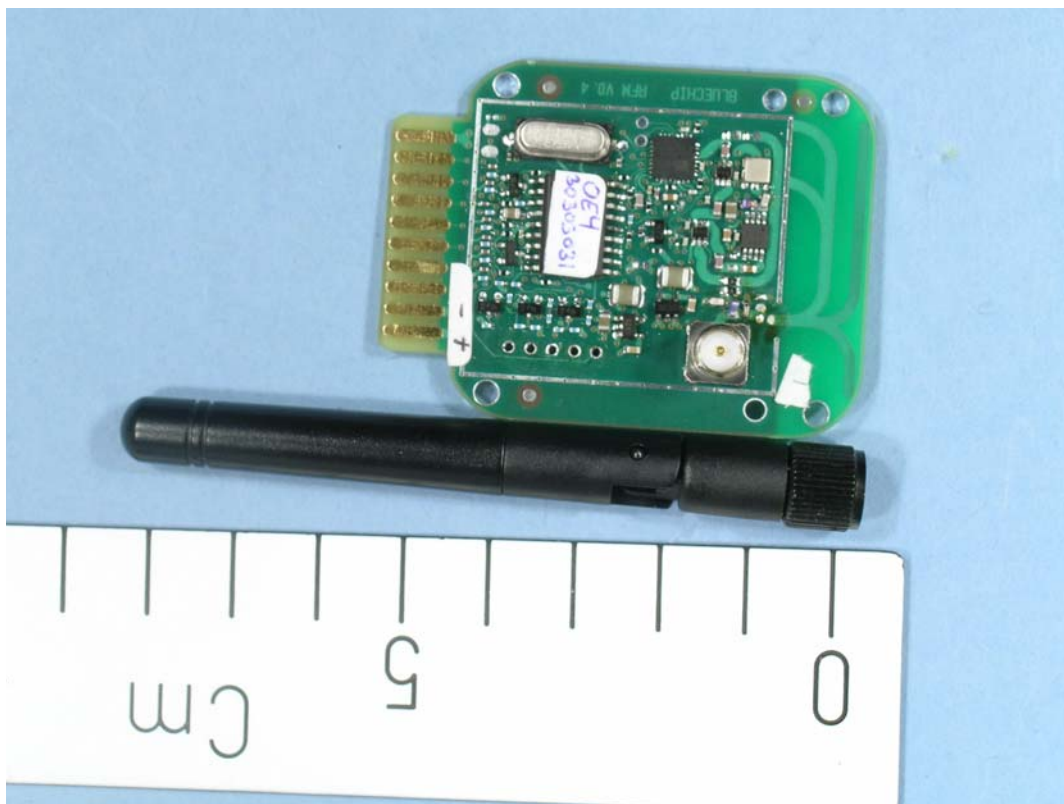
Test setup, Conducted emissions



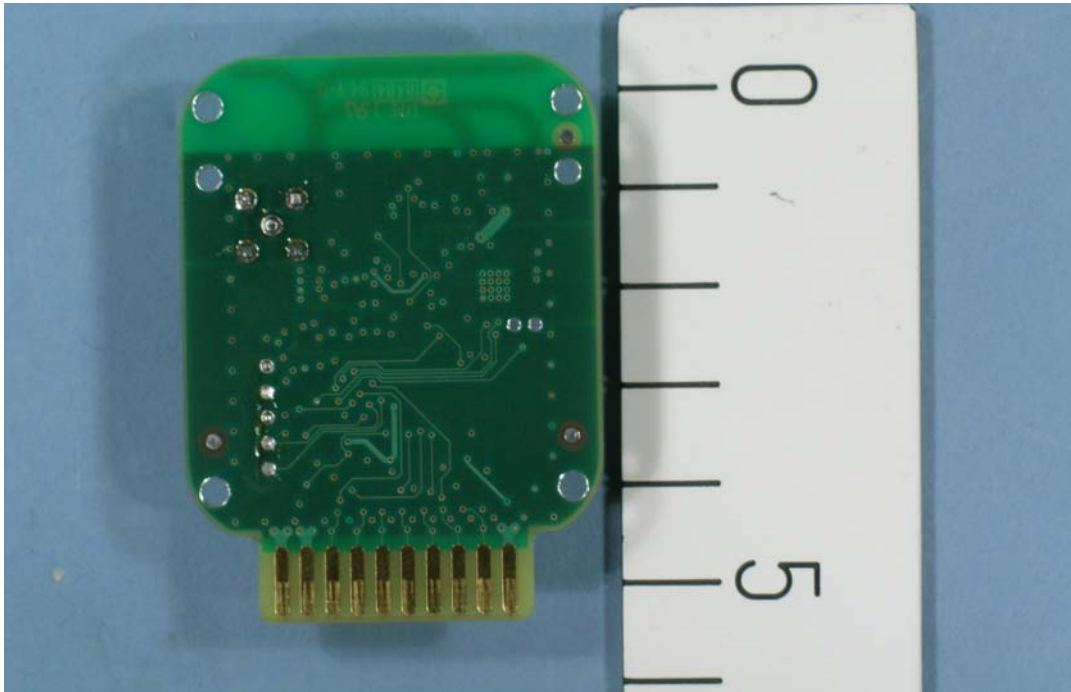
RF module with integrated antenna



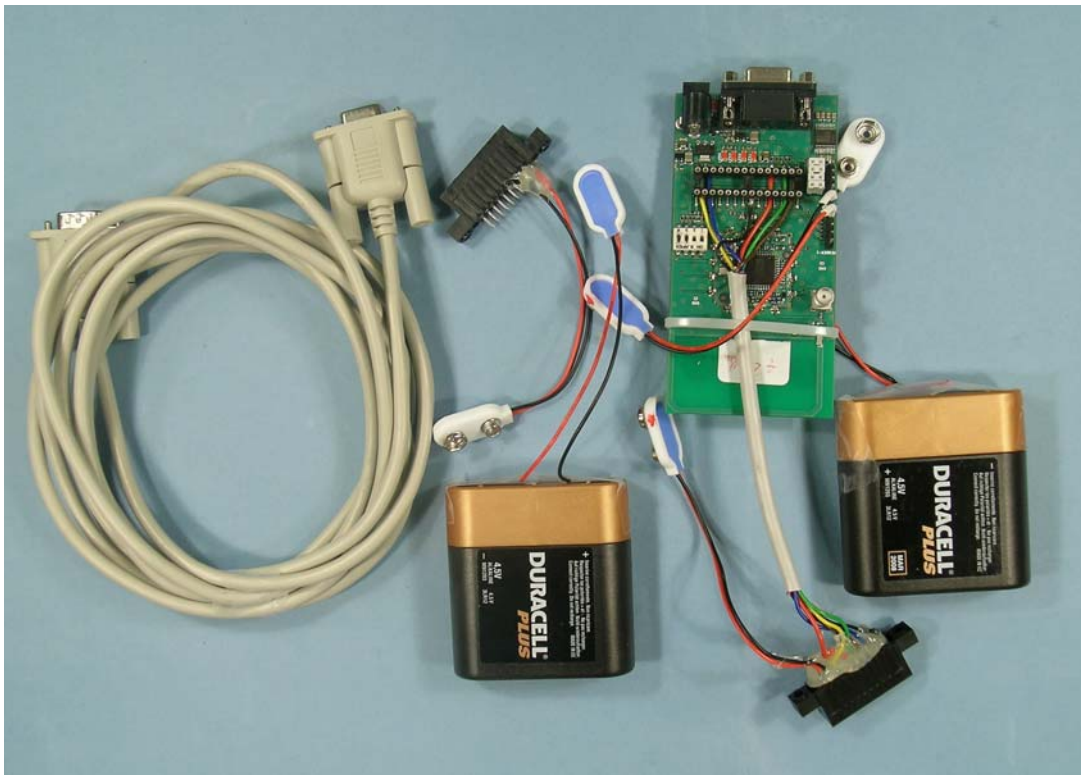
RF module with integrated antenna, back view



RF module with detachable antenna

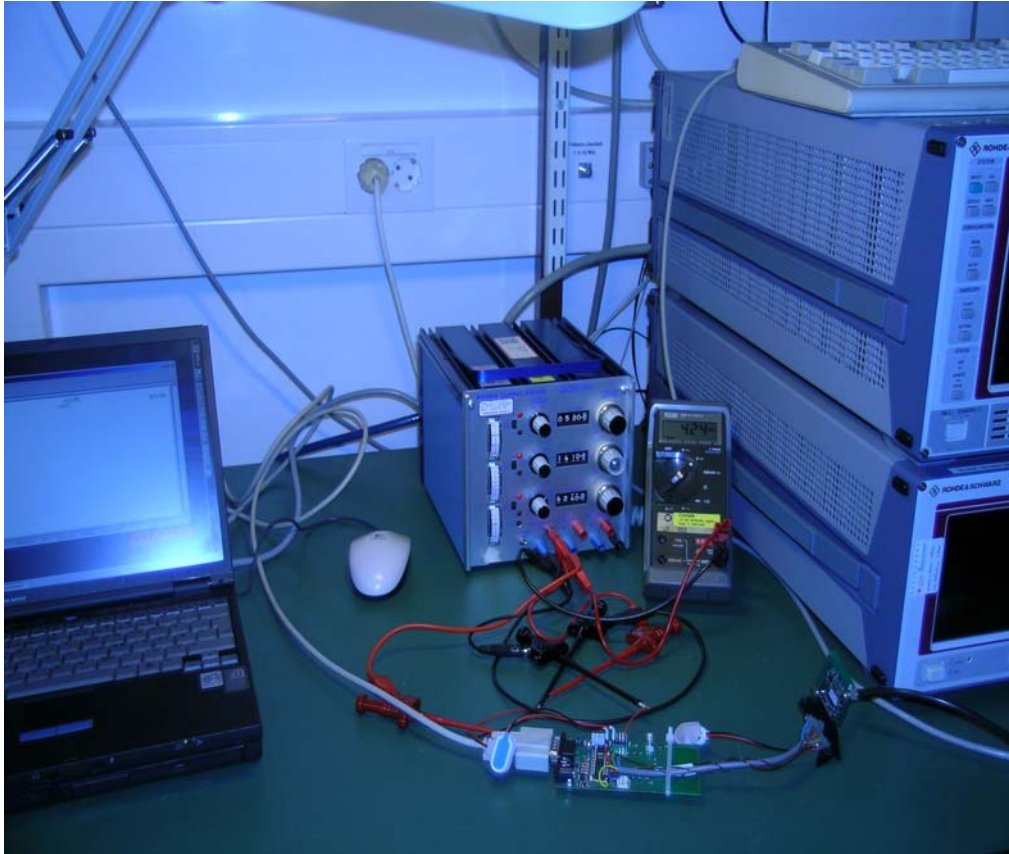


RF module with detachable antenna, back view



Supplied accessories for Testing





Test setup during radiated and conducted measurements, with regulated power supply and I/O ports of the device were loaded



Band pass filter at the input of the amplifier is used in order to eliminate overloading the amplifier from the radiated power for 2<sup>nd</sup>, 3<sup>rd</sup> & 4<sup>th</sup> Harmonics



Directive antennas are used in order to measure harmonics above 4<sup>th</sup>