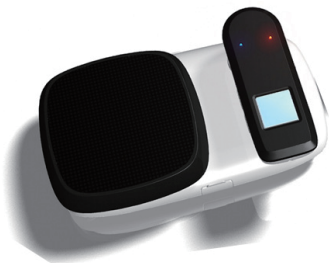


iDock-12

User Manual



GETTING STARTED

1. Please fully charge the battery of the Headset and the Docking Base for approximately 6 hours before initial use.
2. Pair the headset with a Bluetooth-enabled mobile phone.
3. Adjust the volume to a preferred listening level by adjusting volume on the headset, the docking base and the mobile phone.
4. For optimal sound quality when using speakerphone, we recommend the range between user and microphone not to exceed 12 inches.

Note: If the multifunction button is not responding or headset is not working, please reset by inserting a thin item into the reset hole.

CHARGING

The docking base and headset can be charged together or separately, using the included car adapter or USB charging cable. Additionally, the docking base can recharge the headset without any external power source.

1. Connect the charging cable to the headset or connect the USB cable to charge the docking base or headset with docking base.
2. Dock the headset into the docking base if you wish to charge the headset without the USB cable. Switch the charging switch on the Side of the docking base.
3. Connect to other end of the charging cable to the car adapter or the USB port of your PC. Charging is indicated by a Status LED (red) on the docking base or the Indicator A (red) on the headset.
4. Allow the headset and/or docking base to

charge completely. Charging is complete when the LED is dimmed.

Note: 1. It is a good idea to switch off the unit when you are not using it to conserve battery power.

2. It may have charging buzz while the headset is charging during conversation.

3. The Mini USB cable is for power charging only, it will not provide data transfer function while connected to your PC.

TURN ON/OFF THE BLUETOOTH HEADSET

Headset On

1. Hold the multifunction button to turn ON your headset.
2. A low-high tone is heard and the Indicator A, B will blink once.
3. After releasing the multifunction button the Indicator B (blue LED) rapidly blinks every few seconds indicating that the unit is in standby mode.

Note: If the indicator A (red LED) slowly flashes red and tone sounds every 30 seconds, the headset battery is low. Re-charge the headset immediately. (Please refer to Charging section)

Headset Off

1. Press the multifunction button for 3 seconds to turn off your headset.
2. A high-low tone is heard and the Indicator A, B will blink once.
3. The headset is off.

Note: The headset will power off in 10 minutes for power saving when the Bluetooth is not connected.

PAIRING TO A MOBILE PHONE

Before use, the headset must be paired with the mobile phone. The pairing procedure only needs to be done once.

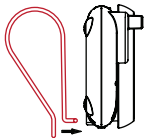
To pair the headset to a mobile phone

1. Ensure the headset is powered off – the headset must be powered off to enter pairing mode.
2. Ensure the Bluetooth radio on your mobile phone is powered on. Please refer to the phone user manual for details.
3. Hold the multifunction button on the headset for 8 seconds. the Indicator A, B will blink once, and then changes to flash alternately red and blue. The headset is ready to pair.
4. Set the mobile phone to search for Bluetooth devices and follow the instructions on the phone's screen. Please refer to the phone user manual for details. You will recognize the headset by its Bluetooth name "iDock-12".
5. Select the "iDock-12" for pairing. When prompted for a passkey, enter "1234".
6. Within a few seconds connection is complete and a blue LED flashes slowly on the headset.

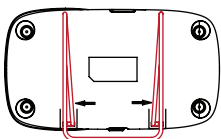
Note: A warning tone is heard when the paired and connected cellular phone is out of service.

INSTALLATION

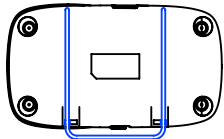
1. Install the Metal Clip into the Docking Base.
2. Install the Docking Base under the Sun Visor.
3. Dock the headset into the docking base
4. The closer you speak to the microphone, the clearer your voice will be to the other party.
5. Adjust the volume to your preferred listening level.



Push the metal wire clip with hook fit inward for positioning the slot at the bottom of the unit



Press it into the slot, then push both side of the hook outward to fit into the slot and hooked.



Uninstall the metal wire clip please reverse the arrow directions on the steps above.



PRIVATE CONVERSATION USE

1. During the conversation, unplug the headset from the docking base and plug into either right or left ear for private conversation.
2. You can also attach the ear hook on the headset, and place it on your left or right ear.

OPERATION

Reset the Headset

Use a stick (diameter less than 1.6 mm) insert into the reset hole at the right side of the headset to make reset.

Answering a call

1. Press the multifunction button briefly and release. Call is answered.
2. Press the button again to end the call.

Reject a call

Hold the multifunction button for 2 seconds. Call is rejected.

Make a call

You may make a call in the normal way and press SEND, or use voice dialing if your mobile phone supports it and is properly set up. Please refer to your mobile phone user manual for voice dial set up detail.

Activate voice dialing (Dependent on your phone supporting)

1. Press the headset multifunction button to activate the voice dialing.
2. A beep will be heard then prompting the user to say the name of the person to call.
3. The phone will place the call automatically. In case the phone does not recognize the name spoken, the steps above may be repeated.
4. Press the button again to end the call

Last Call Redial (Dependent on your phone supporting)

1. Unplug the headset from the Docking Base and hold down the volume down (-) button for 2 seconds
2. Release after a low-high. The redial will be in process.

Hold Function (Dependent on your phone supporting)

1. Hold the volume down (-) button for 2 seconds to put the active call on hold.
2. Hold the volume down (-) button again for 2 seconds to switch back to the call.

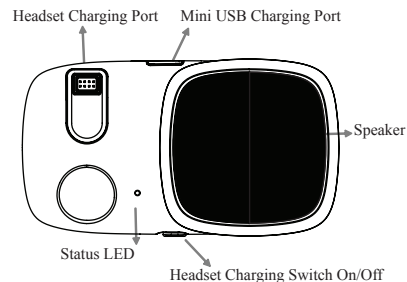
Mute Function (Dependent on your phone supporting)

1. Simultaneously press both the volume down (-) and up (+) buttons to enable the mute function
2. Press both buttons again to disable the mute function.

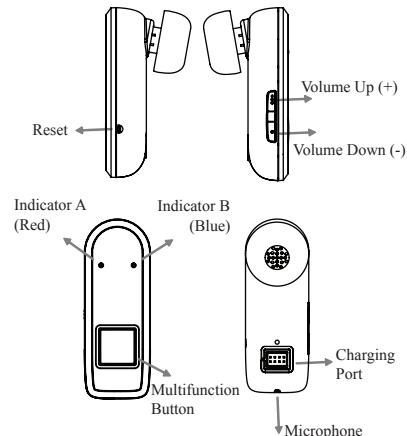
Transfer Function (Dependent on your phone supporting)

1. Hold the volume up (+) button for 2 seconds to transfer the call from headset to phone.
2. Hold the volume up (+) button for 2 seconds again to transfer the call back to the headset.

The Docking Base



The Headset



SAFETY AND APPROVALS AND CERTIFICATION

Users are advised not to make changes or modify the device in any way. Changes or modifications not expressly approved by Halfa will void the warranty.

FCC Notices

This device complies with part 15 of the FCC rules. Operation is subject to the following two conditions: (1) This device may not cause harmful interference, and (2) This device must accept any interference received, including interference that may cause undesired operation.

FCC RF Exposure Requirements

This device and its antenna(s) must not be co-located or operation in conjunction with any other antenna or transmitter.

NOTE: THE MANUFACTURER IS NOT RESPONSIBLE FOR ANY RADIO OR TV INTERFERENCE CAUSED BY UNAUTHORIZED MODIFICATIONS TO THIS EQUIPMENT. SUCH MODIFICATIONS COULD VOID THE USER'S AUTHORITY TO OPERATE THE EQUIPMENT.

CE Statement

Important Notice: This device is a 2.4 ~ 2.5 GHz FHSS Bluetooth Headset, intended for office and home uses in all EU and EFTA member states.