

DIGICAM



**2.1 MEGA PIXELS
DIGITAL CAMERA
USER'S MANUAL**

Warning: Changes or modifications to this unit not expressly approved by the party responsible for compliance could void the user's authority to operate the equipment.

NOTE: This equipment has been tested and found to comply with the limits for a Class B digital device, pursuant to Part 15 of the FCC Rules. These limits are designed to provide reasonable protection against harmful interference in a residential installation. This equipment generates, uses and can radiate radio frequency energy and, if not installed and used in accordance with the instructions, may cause harmful interference to radio communications.

However, there is no guarantee that interference will not occur in a particular installation. If this equipment does cause harmful interference to radio or television reception, which can be determined by turning the equipment off and on, the user is encouraged to try to correct the interference by one or more of the following measures:

- * Reorient or relocate the receiving antenna.
- * Increase the separation between the equipment and receiver.
- * Connect the equipment into an outlet on a circuit different from that to which the receiver is connected.
- * Consult the dealer or an experienced radio/TV technician for help.

Shielded cables must be used with this unit to ensure compliance with the Class B FCC limits.

Notification

- * SD logo is a trademark.
- * Microsoft and its logo as well as Windows and Window NT are registered trademarks of Microsoft Corporation of the U.S. in both the United States and other countries.
- * Other names of systems and products mentioned in these instructions are usually the registered trademarks or trademarks of the manufactures who developed the system or product concerned.

Notes on the SD Memory Card Write-Protect Switch

The SD Memory Card has a write-protect switch. Sliding the switch to [LOCK] prevents the recording of data to the card as well as the deletion of data the card. Sliding back the switch permits such operations.

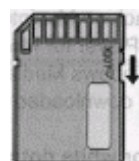


Table of Contents

Chapter 1 Attention

1-1 Safety Precautions.....	3
1-2 Before Using Your Camera.....	3
1-3 Operation Caution.....	4
1-4 Package Contents.....	4

Chapter 2 Getting to Know Your Camera

2-1 Names of Parts.....	5
2-2 Introduction	7
2-3 Features.....	7

Chapter 3 Controls, Operation and Display

3-1 Getting Started.....	7
3-2 Taking Pictures.....	8
3-3 Operating Modes.....	8
3-4 Capture Mode.....	9
3-5 Playback Mode.....	9
3-6 PC Mode.....	8
3-7 Control Buttons.....	10

Chapter 4 Driver Installation

4-1 Capture System Requirements.....	10
4-2 Software Installation.....	10

Chapter 5 View Images and Videos

5.1 View Images and Videos on a TV Set.....	12
---	----

Chapter 6 Specification

6-1 Specification.....	12
------------------------	----

Chapter 1 Attention

Please read through this manual carefully before using the camera and follow the instructions to avoid damages caused by improper operation.

1-1 Attention

The software CD-ROM packaged with the camera is designed for PC only. To play this CD-ROM on a stereo or CD player may cause damage to it.
This camera is a precision electronic device. Do not attempt to service this camera yourself, as opening or removing covers may expose you to dangerous voltage points or other risks.
Do not expose this camera under direct sunlight to avoid causing a fire.

1-2 Before Using Your Camera

Try to take some pictures before you perform the formal recording.
Before taking pictures with this camera in any important occasion (such as a wedding ceremony or an overseas trip), do test the camera beforehand to ensure that it functions well. Any additional loss caused by the malfunction of this product (such as costs of photography or any loss of benefit generated by the photography) is not the responsibility of our company and no compensation will be given for it.

Copyright information

Unless agreed by the right owner, all the pictures taken with this digital camera cannot be used in violation of copyright law. Moreover, when "No Photography" restriction is placed on site, you cannot record any live performance. Improvisation or exhibits even for personal purpose. Any transfer of pictures or memory card with data must be conducted under the constraints of copyright law.

Notes on the LCD (Liquid Crystal Display) monitor

1. If the liquid contacts the skin:
Please wipe dry the skin with a cloth and wash with large amount of water.
2. If the liquid gets in the eye:
Please immediately rinse with fresh water for at least 15 minutes and then consult with a water to receive treatment as soon as possible.
3. If anyone accidentally swallows the liquid:
Please rinse the mouth with water, drink large amount of water and then consult with a physician to receive treatment as soon as possible.

3

1-3 Operation Caution

This product consists of intricate electrical parts. To ensure the photography normally, do not drop or hit the camera when taking pictures.

- Avoid to use or place the camera in the following locations:
 1. Damp and dusty places.
 2. Sealed vehicles or places exposed to direct sunlight or places subject to extremely high temperatures or heat.
 3. Violently turbulent environment.
 4. Locations full of smoke, oil fumes or steams.
 5. Locations subject to strong magnetic field.
 6. Raining or snowing environment.
- Do not open the battery cover when the power is on.
- If water has entered the camera, immediately turn the power OFF and remove the batteries.
- How to maintain your camera:
 1. If lens, LCD monitor or viewfinder surface is dirty, please use lens brush or soft cloth to wipe clean instead of touching the lens with you fingers.
 2. Do not use any solid object to hit the camera to avoid scratching the lens, LCD monitor or viewfinder surface.
 3. Do not use any detergent or volatile solution, which will subject the camera case and paint to solving or distortion. Use soft cloth only.

Under the environment with electrostatic discharge, the camera may Malfunction and require user to reset the camera. The recording Video may be corrupted or lost.

1-4 Package Contents

Please check if the following items are in the package when purchasing this product.



- CD-ROM (incl. Camera Driver)
- Pouch
- Wrist Strap
- USB Cable
- TV OUT Cable
- This User's Manual

4

Chapter 2 Getting to Know your DIGICAM

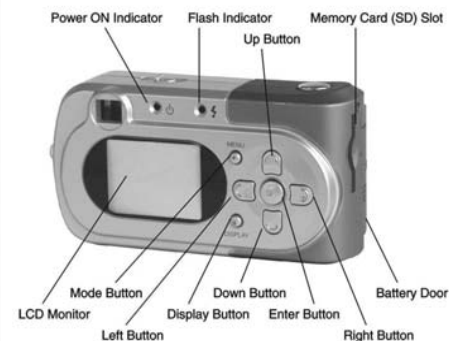
2-1 Names of Parts

Front View



5

Rear View



6

2-2 Introduction

Thank you for choosing the DIGICAM. You can use this versatile camera not only for taking still digital pictures, but also capturing video and sound.

2-3 Features:

- * Digital quality image
- * 2 x Digital zoom
- * Auto, forced flash light
- * 3 Resolution settings: 1600 x 1200, 1280 x 1024, 640 x 480 pixels
- * Marco feature (optional)
- * 2.1 Mega pixels CMOS sensor
- * Colour LCD TFT display
- * 10 second self-timer
- * USB interface
- * PAL / NTSC video output allows viewing images on TV
- * SD card expansion slot
- * On-board memory (optional) of internal flash memory, retains images without batteries

Chapter 3, Controls, Operation and Display

3-1 Getting Started

Installing batteries

Open the battery compartment door and insert two LR6 alkaline batteries, align the '+' and '-' polarity as indicated on the battery door, then close the door.

Turning the camera on

Slide the Power ON/OFF switch to turn on the camera. The camera will sound a beep..... and appear an initial logo then clock set screen.

Setting the time and clock

The camera will date/time stamp each digital image file with date/time information. The benefit of having the time and date set is that when you transfer the images to a computer, the file properties will show the correct time and date that the picture was taken. To set the time and date, push the UP/DOWN/LEFT/RIGHT and OK (ENTER) button to accept current change.

Changing operation modes

Use the MODE, DISPLAY, UP DOWN, LEFT, RIGHT button to shift from one operating mode to the next one. Details of each operating mode will be discussed in the following sections.

Using MARCO switch (optional)

Marco photography is the art of taking close up picture, to take the close up shots using the slide MARCO switch located on the right hand side of the camera.

Setup

Language: English, Chinese and Others

Auto Off: Disable, 1,2 and 3 minutes

Clock Set: yyyy mm dd
 hh : mm : ss

Date Stamp: Off, Date and Time

TV System: Pal and NTSC

Exit

3-5 Playback Mode

Use this mode to view the images on the LCD display, by pressing the DISPLAY button to select 'Single Image' or 'Index' display. Use UP/DOWN to zoom IN/OUT.

Press OK to show Playback menu:-

Delete option: Delete One means erase the current images.

Delete All means erase all images

Format option Ok or Cancel to affirm formats the memory

Caution: Do this will lose all the data

Protect option Select the images to prevent erase by misapply the delete key.

Caution: Images will not be protected

Setup Option: Return to Capture mode Setup menu.

3-6 PC Mode

Set to PC camera (Web Camera) or MSDC (Mass Storage Digital Camera).

Inserting a SD card inserting a SD card

Please remember to format the new SD card and SWITCH OFF the camera before insert or remove the SD card.

Note: When a SD card is used, the camera will store data in the card first.

Turning the LCD display OFF

The LCD display consumes much of your batteries power. You may turn off the LCD display OFF. When the camera is in Capture mode, press the DISPLAY button and the LCD display will be off. You still can take pictures by framing your subject through the VIEW FINDER. To turn the LCD display on again, press the DISPLAY button once.

Turning camera OFF

It is not necessary to turn the camera OFF as its auto power off function will turn itself off only if you have enable this function (1, 2 or 3 minutes). However, you can turn the camera off manually by Slide the power ON/OFF switch leftward. The camera will sound a beep.....then the camera will switch itself off.

3-7 Control Buttons

PC Camera mode

Shoot button

During Capture mode, use RIGHT button to select Single, Self-timer, Multi-burst, Movies shooting or Sound recording.

Flash light button

During Capture mode, use LEFT button to select Disable-flash, Forced-flash, Anti-red eye, Auto-flash.

Display button

In capture mode, use this key to switch ON/OFF the LCD display.

In Playback mode, use this key to select Single or Index LCD display.

Shutter button

In Capture mode, use Shutter button to shoot still Images or use as a start and stop functions for Shooting video.

In Playback mode, use as video playback start And stop button.

Uploading still pictures and videos

First set the camera in PC mode and set option to MSDC. Then plug the USB cable into the USB port of the camera and connect the other end to the USB port on your computer. The LCD display shows 'MASS STORAGE'. Double click Removable Disk and all images and video clips stored in the Internal memory or SD card may be view. You can Upload and store the images, as you like.

3-2 Taking Pictures

Select your desired resolution and image quality. Framing your shots, prevent the camera from shaking (which can cause blurred pictures) by holding the camera Steadily with both hands. You can use either the VIEW FINDER or the LCD display to preview the picture.

Hold the camera with thumb and forefingers of the camera with the forefinger of your right hand on top of the SHUTTER button.

You can use the Zoom In/Up or Zoom Out/Down buttons to Zoom in or out. The LCD display will help you to preview the effects of the zoom function. When you are satisfied with the preview slowly press the SHUTTER button. If you press the SHUTTER button quickly, you might shake the camera and get a blurry picture.

3-3 Operating Modes

After pushing the MODE button, there are three modes are available: Capture (default), Playback and PC modes

First set the camera in PC mode and set option to PC Camera, then install driver.

Chapter 4, Driver Installation

4-1 Computer System Requirements

Operation System: Windows98/ME/2000/XP

CPU: MMX Pentium 200MHz or fast

Monitor: XGA or better

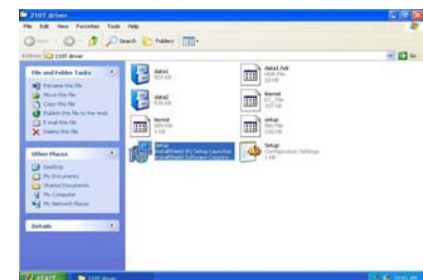
CDROM Device: 2x Speed or fast

USB port: USB1.0/1.1/2.0

4.2 Software Installation

Install driver

Close all the running program, and insert the driver CD to CD-ROM device, Double click the setup.exe.



3-4 Capture Mode

When you press the OK button, You will see the Preview menu, there are seven modes are available for your selection: EV, Resolution, White Balance, Meter, Image Quality, Setup and Exit respectively.

By using the UP/Down and OK button, you can get into your desired mode, and use the LEFT or RIGHT button to change the parameters, press the OK button again to accept the change. Uses the DOWN button goes to the Exit mode and press the OK button back to the Capture mode.

EV Exposure Value

(-2.0) to (+ 2.0) in 0.5 per step

Resolution

1600x1200, 1280x1024 and 640x480

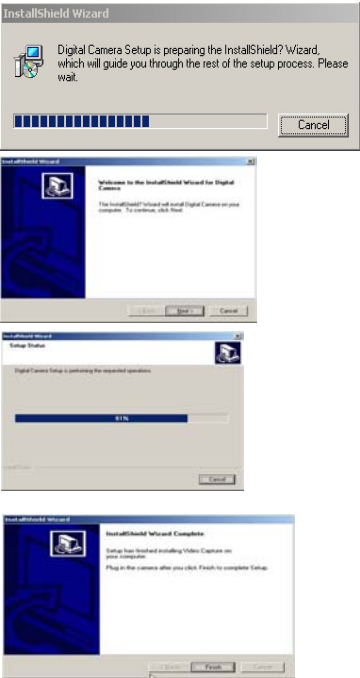
White Balance

Auto, Daylight, Cloudy, Fluorescent and Tungsten

Image Quality

Standard, Better and Best

Click [NEXT]. When the window appears :



Follow the information Reboot the computer. Then plug the USB cable into the USB port of the camera and connect the other end to the USB port on your computer.

When the setup end. You could find the Start menu Sunplus CA533A. Show as:



Click the "Amcap" to run the program :



Attention : The interface of setup maybe differ with above example picture by different OS.

Now you launch Sunplus Ca533a/Amcap and a live video preview will appear.

Chapter 5, View Images and Videos
5.1 View Images and Videos on a TV Set
Select the right TV format PAL or NTSC, plug the video cable into the video output port of the camera and connect the other end to the and video stored in the camera.

Chapter 6, Specification
6.1 Specification

Image device: 1/2 inches color CMOS sensor
Lens: f=8.5mm F2.8 fixed focus
Color bits: 24bits
Zoom: 2 X digital zoom
Image resolution pixel: 1600×1200 (UXGA mode)
1280×1024 (SXGA mode)
640×480 (VGA mode)
320×240 (SIF mode)

Image Quality: Compress ratio 4~5 (Best)
Compress ratio 8~12 (Better)
Compress ratio 15~17 (Standard)

File format: JPEG

Build-in Storage: Optional,(starts from 8MB NAND flash)

External Storage: SD card expansion slot up to 128MB

Number of images for a build-in 8MB flash memory camera

Quality Size	Standard	Better	Best
1600×1200	28	18	14
1280×1024	96	65	31
640×480	174	100	64

ATTENTION: The number of shooting images can differ from these values according to shooting conditions.

Communication ports: USB 1.0/1.1

Support OS: Windows 98/ME/2000/XP
(Windows 98 requires driver)

Display: LCD TFT Display

Flashlight: Auto and forced

Self-Timer: 10 seconds

Exposure: Automatic or Manual

White Balance: Automatic or Manual

Power supply: 2 x AA, LR6 Alkaline Batteries

Shooting time: Less than 3 seconds

Boot time: Less than 10 seconds

Dimensions: 100×53×29mm (W x H x D)

Weight: 120g