

## 1.6 User Manual

As with every accessory, the best results can be obtained by referring closely to your phone's handbook.

### Please Note:

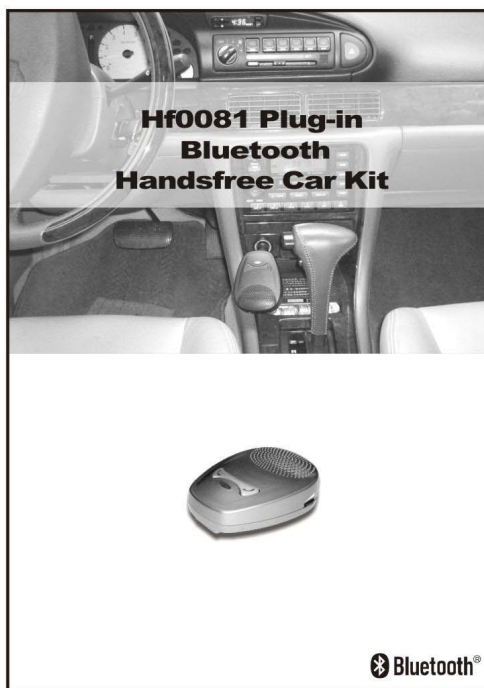
Under some circumstances, it is possible to be in connection range but not be within earshot of the handsfree.

In this circumstance the handsfree may answer the call but you will not be able to hear the caller through your phone.

### Caution

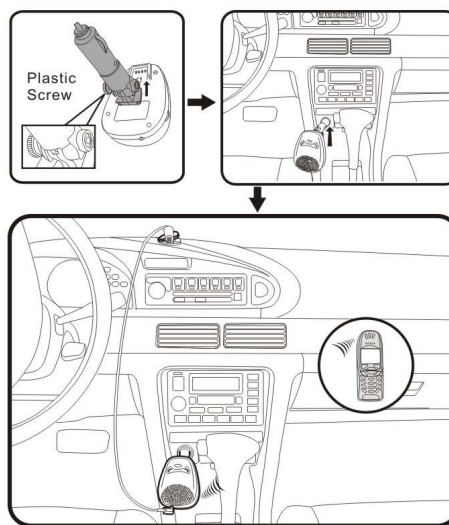
Changes or modifications to this Plug-in Bluetooth Handsfree Car Kit not expressly approved by the manufacturer could void the user's authority to operate the equipment.

Bluetooth trademarks are owned by Bluetooth SIG, Inc.



### Installation:

1. Loosen the Plastic Screw beside the joint of the Power Plug to a position that enables the joint moving freely.
2. Insert the Power Plug into the cigarette power socket and switch on the engine, the Green and Red buttons on the top of the main unit are on.
3. Adjust the Power Plug to the optimum angle and tighten the Screw.
4. Adjust the volume by rotating the volume knob on the side of the main unit.
5. Insert the external microphone to the microphone socket located at the bottom of the main unit.



【1】

**Operation:**

**1. Making a call**

Either use the phone keypad, or if your phone supports the voice dial feature press and hold the green button on the unit until you hear a beep. Wait for a second beep from the phone, signaling that it is ready to accept a voice dial (this may take up to 10 seconds), say the voice tag as you recorded it. If the voice tag is recognised it will be repeated back to you and the phone will dial the number. If it is not recognised you will hear a two tone beep, or the blue light will go out.

**2. Receiving a call**

Either set your phone to auto answer (refer to your phone manual), or when the unit starts to ring, press the green button to answer the call.

**3. Ending a call**

If your phone is paired under the *handsfree* profile (most Nokia, Siemens etc.) press the red button to end the call. If your phone is paired under the headset profile (most Sony Ericsson etc.), press the green button to end the call.

**4. Re-dialing**

With phones paired under the *handsfree* profile, pressing the green button on the main unit twice in quick succession will dial the last number called.

**FRONT SURFACE OF MAIN UNIT**

Blue LED  
 RED Button  
 GREEN Button  
 Volume Control  
 External Microphone Socket



【2】

**General information and Pairing Procedures  
 For HF0081 Plug-in Bluetooth Handsfree Car Kit**

1. Our Bluetooth Handsfree Car Kit is composed with Bluetooth module version 1.1, which supports handsfree profile and headset profile. During the pairing procedure, you must make the connection based on the profile that the mobile phone supports.
2. For most **Nokia and Siemens models**, the mobile phones support **handsfree profile**, and most **Sony Ericsson mobile phones** support **headset profile**. For other models, please check with the mobile phone manual for the type of profile.
3. Press and hold the Red button for 2-3 seconds until you hear 1 beep then release and the Blue LED flashes slowly. That is the handsfree profile. **The Blue LED flashing slowly** indicates that the main unit and the phone are in the process of **pairing under the handsfree profile condition**.
4. For pairing with most Sony Ericsson models, operate item 3 above without any Nokia or Siemens mobile, and during the slow flashing of the Blue LED from above procedure, press and hold the Red button again for 2-3 seconds until you hear another beep, the Blue LED flashes faster. That is the headset profile. **The Blue LED flashing quickly** indicates that the main unit and the phone are in the process of **pairing under the headset profile condition**.
5. Please refer to your mobile phone manual for the bluetooth setting.
6. Pairing procedures for some popular phones are provided from next page on.

**Specification of HF0081 Plug-in Bluetooth  
 Handsfree Car Kit**

1. Digital Signal Processor technology
2. Fully Duplex
3. Echo Cancellation
4. Noise Suppression
5. Internal microphone and external microphone jack equipped
6. Sensitivity of receiver (microphone): -52dB
7. Speaker Impedance: 8Ω
8. Speaker Power: 2W (max.)
9. Input voltage: DC 12V
10. Working distance range: 10M (max.)
11. Operating Temperature range (0°C ~ 35°C)
12. Storage Temperature range (-40°C ~ 80°C)
13. Frequency Range (2.4 GHz ~ 2.4835 GHz)
14. Bluetooth module version 1.1
15. Support handsfree and headset profiles.

【3】