

# id-LOCK

An ideal wireless lock for your PC

## Table of Contents

---

### **I. IMPORTANT NOTE**

[FCC Information](#)

[Declaration of Conformity](#)

### **II. QUICK INSTALLATION GUIDE**

### **III. INTRODUCTION**

[How It Works](#)

[System Requirement](#)

[Specifications](#)

[Package](#)

### **IV. HARDWARE**

[Hardware Installation](#)

[Hardware Removal](#)

### **V. SOFTWARE**

[Software Installation](#)

[Password Setting](#)

[Product ID Validation](#)

[Software Removal](#)

### **VI. USER GUIDE**

### **VII. FREQUENTLY ASKED QUESTIONS**

### **VIII. OPERATION NOTICE**

## **I. IMPORTANT NOTE**

To comply with the FCC RF exposure compliance requirements, no change to the antenna or the device is permitted. Any change to the antenna or the device could result in the device exceeding the RF exposure requirements and void user's authority to operate the device.

## **FCC Information**

The equipment has been tested and found to comply with the limits for a Class B Digital Device, pursuant to part 15 of the FCC Rules. These limits are designed to provide reasonable protection against harmful interference in a residential installation. This equipment generates, uses and can radiate radio frequency energy and, if not installed and used in accordance with the instruction, may cause harmful interference to radio communication. However, there is no grantee that interference will not occur in a particular installation. If this equipment does cause harmful interference to radio or television reception, which can be determined by turning the equipment off and on, the user is encouraged to try to correct the interference by one or more

of the following measures:

- Reorient or relocate the receiving antenna.
- Increase the separation between the equipment and receiver.
- Connect the equipment into an outlet on a circuit different from that to which the receiver is connected.
- Consult the dealer or an experienced radio/TV technician for help.

The user should not modify or change this equipment without written approval from the manufacturer. Modification could void authority to use this equipment.

## Declaration of Conformity

Model No.: KL-007

FCC ID: RQNKL007

This device complies with part 15 of the FCC Rules. Operation is subject to the following two conditions:

- (1) This device may not cause harmful interference, and
- (2) This device must accept any interference received, including interference that may cause undesired operation.

## II. QUICK INSTALLATION GUIDE

Follow Steps below to install your **id-LOCK** in minutes.

### Step 1

Before installing the software, make sure the **id-LOCK** receiver is properly inserted into USB port of your PC.

### Step 2

Insert enclosed CD-ROM into CD-ROM drive of your PC and follows the on-screen installation guide.

### Step 3

Key in the Password (Security Code) for backup in case of device failure or loss. It's advisable to keep this Password in mind.

### Step 4

Do the ID Validation procedure in order to associate your **id-LOCK** transmitter with the designated PC.

### Step 5

For detailed information or questions about **id-LOCK**, simply move your mouse to the **id-LOCK** taskbar icon and right click the mouse button, then select "**User Manual**" in the popup menu.

## III. INTRODUCTION

## How It Works

- The **id-LOCK** is composed of a wireless transmitter and a receiver. Simply plug the receiver into USB port of your PC and carry the small, lower power consumption transmitter with you.
- Your PC in use will be automatically locked when you are away from it for about 2 to 5 meters\*.
- Your PC automatically resumes normal operation when you return to the effective range.
- When the PC is locked, you can also enter preset password to unlock it if your transmitter and/or receiver are not available.
- One transmitter can be shared among several PC's.

\* Environmental factors may adversely affect the signal range.

## System Requirement

- IBM Compatible PC
- Windows 98 SE, ME, 2000 or XP
- Available USB Port
- CD-ROM Drive

## Specifications

- Operation Frequency: 315MHz / FCC; 434MHz / CE.
- Power Supply: Transmitter - DC 3V/2.8mA; Receiver - DC 5V/20mA.
- Size: Transmitter - 46 x 42 x 14mm; Receiver - 65 x 19 x 10mm
- Weight: Transmitter (include CR-2032 battery) - 9g; Receiver - 9g

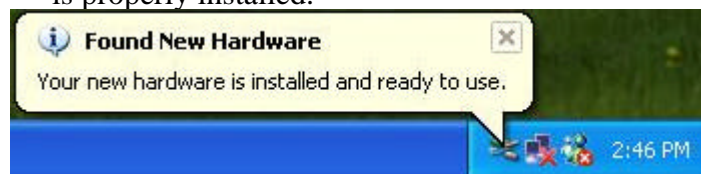
## Package

- Transmitter Unit x 1
- Receiver Unit x 1
- 3V Battery (CR-2032) x 1
- CD-ROM x 1
- Lanyard x 1
- USB Extension Cable x 1

## IV. HARDWARE

### Hardware Installation

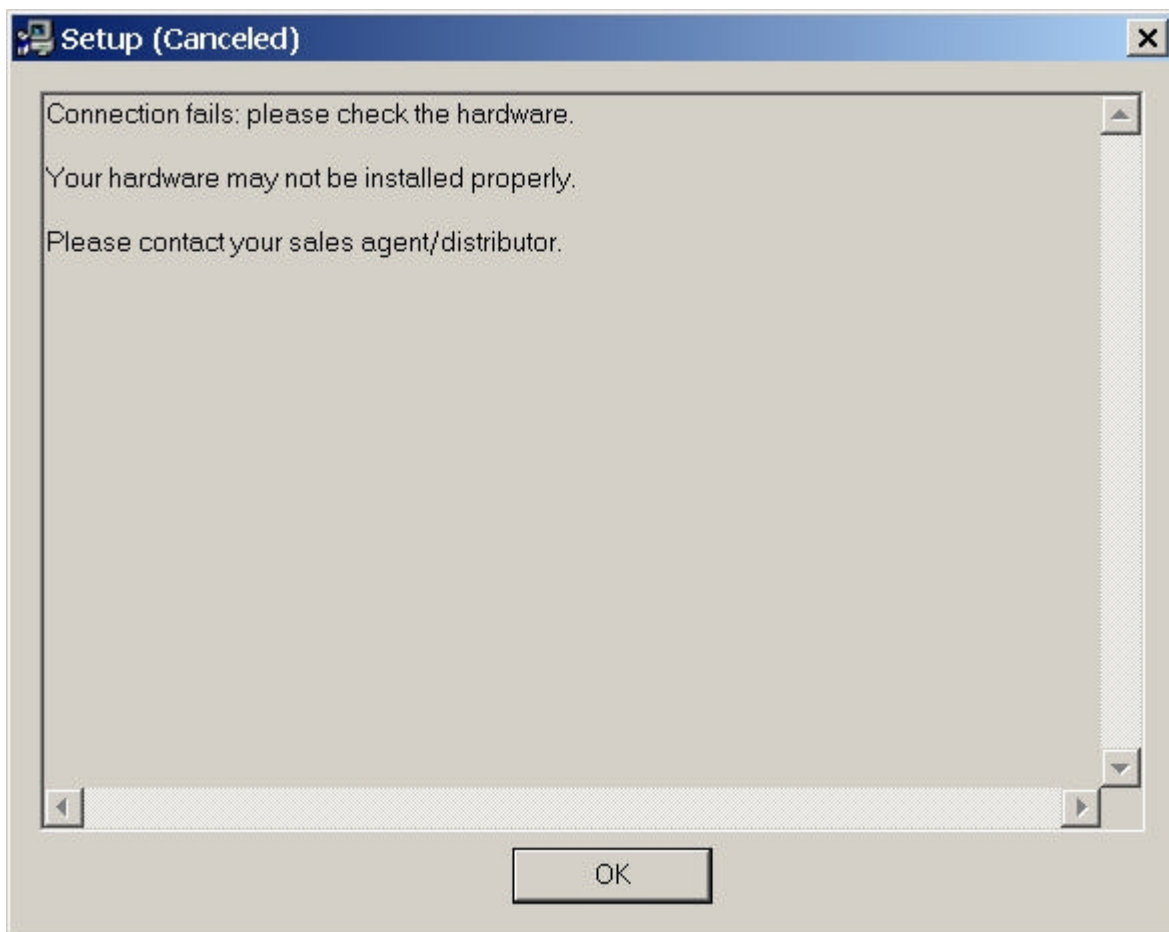
1. Insert the **id-LOCK** receiver into USB port of your PC and the PC shall automatically detect if the hardware is properly installed.



2. If your PC fails to detect the receiver during software installation, following window will be displayed. Repeat above step and click “ **Check Again** ” or exit the setup program.



3. If the following window is displayed on the screen, click “ **OK** ” button to cancel the installation.



4. Double check to see if :

- the USB port is fully functional and
- the **id-LOCK** receiver is properly inserted into the USB port.
- If you are going to use **id-LOCK** through a USB Hub connected to your PC, please insert **id-LOCK** receiver into USB port of your PC first during installation.

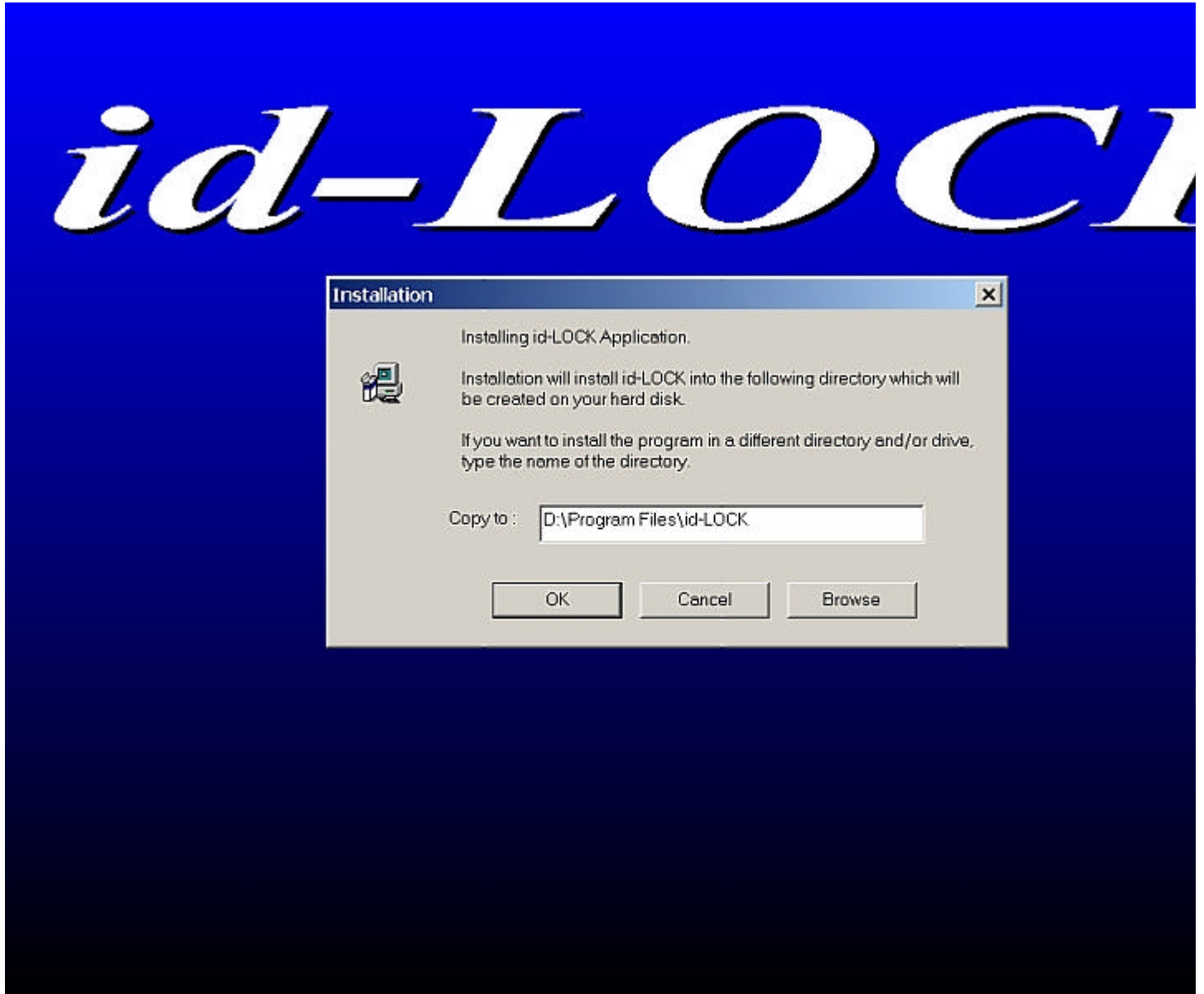
## Hardware Removal

Simply unplug the **id-LOCK** receiver from the USB port.

## V. SOFTWARE

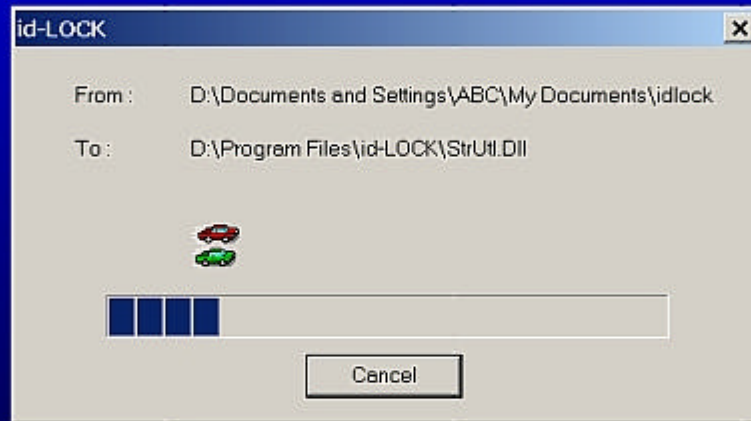
### Software Installation

1. Place enclosed CD-ROM that comes with the **id-LOCK** in the CD-ROM drive and your PC will automatically run the installation program. The screen will look like what shown below. Simply follow the on-screen instructions step by step to install the software. Click “ **OK** ” to start the installation.



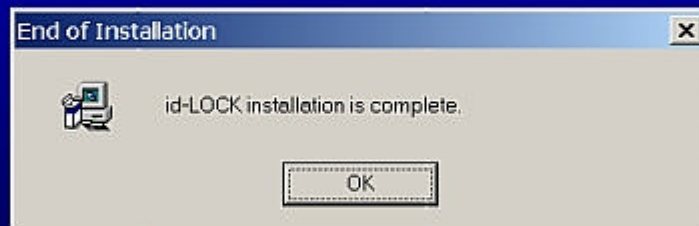
2. When the software is being installed, the screen will look similar to the one below.

# *id-LOCK*



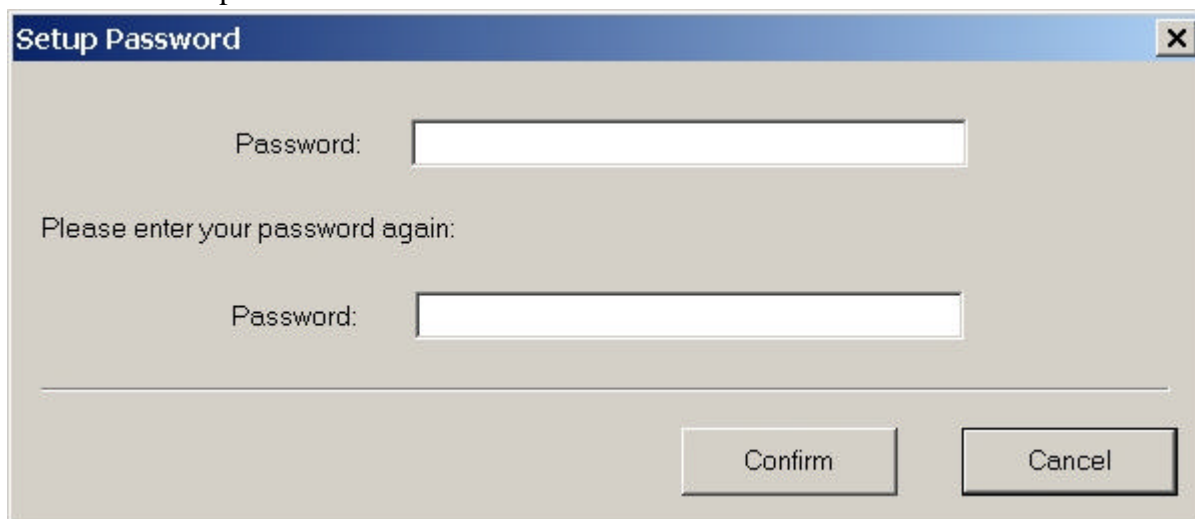
3. Click "**OK**" to confirm the installation is completed.

# *id-LOCK*



## Password Setting

1. After the software installation is completed, you will be asked to set the Password (Security Code). The **id-LOCK** software accommodates a password with up to 64 alpha-numeric characters. The alpha-numeric characters in password are case insensitive.

A screenshot of a Windows-style dialog box titled "Setup Password". It contains two text input fields. The first field is preceded by the label "Password:". Below the first field is the text "Please enter your password again:". The second field is also preceded by the label "Password:". At the bottom of the dialog box are two buttons: "Confirm" and "Cancel". The dialog box has a standard Windows title bar with a close button (X) in the top right corner.

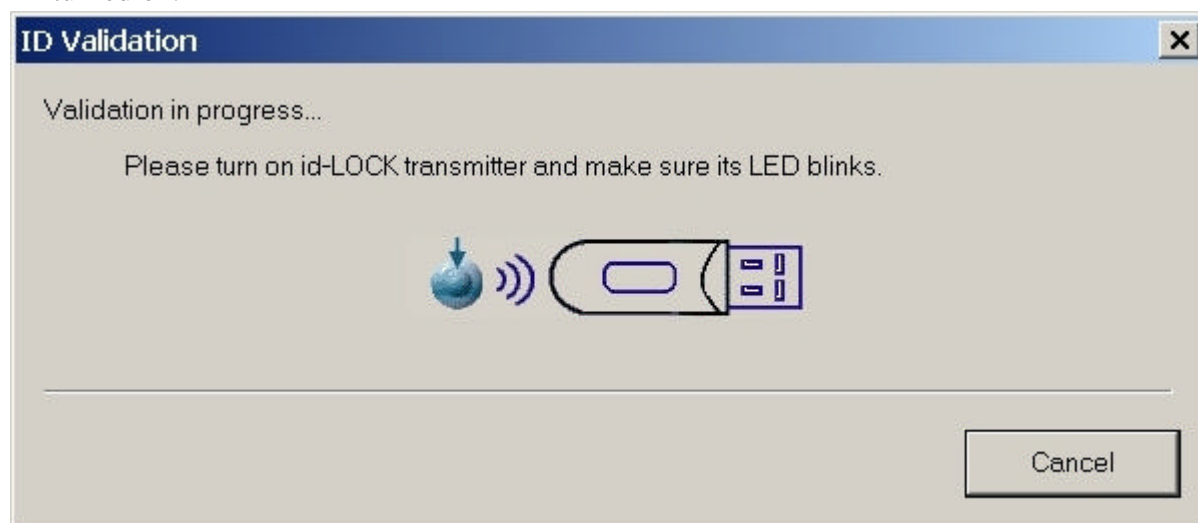
## Product ID Validation

After you set up the Password successfully, an ID Validation procedure has to be completed in order to associate your **id-LOCK** transmitter with the designated PC before using the product.

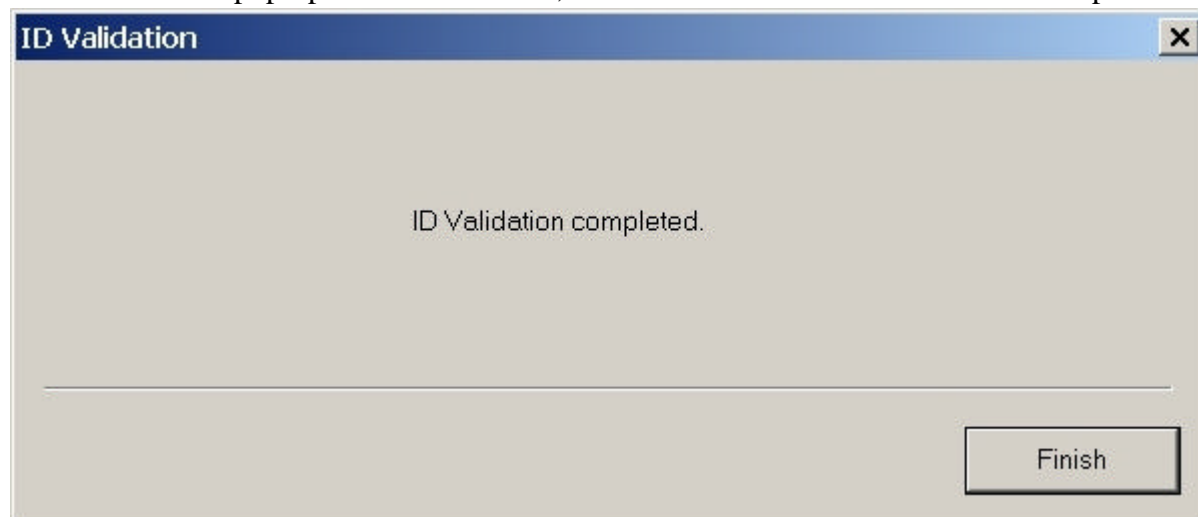
1. Please make sure the **id-LOCK** transmitter is turned off, then click "**Next**".



2. The following window displayed indicates that the ID Validation is in progress. The transmitter shall now be turned on.



3. When the last pop-up window is shown, it indicates that the ID Validation is completed.



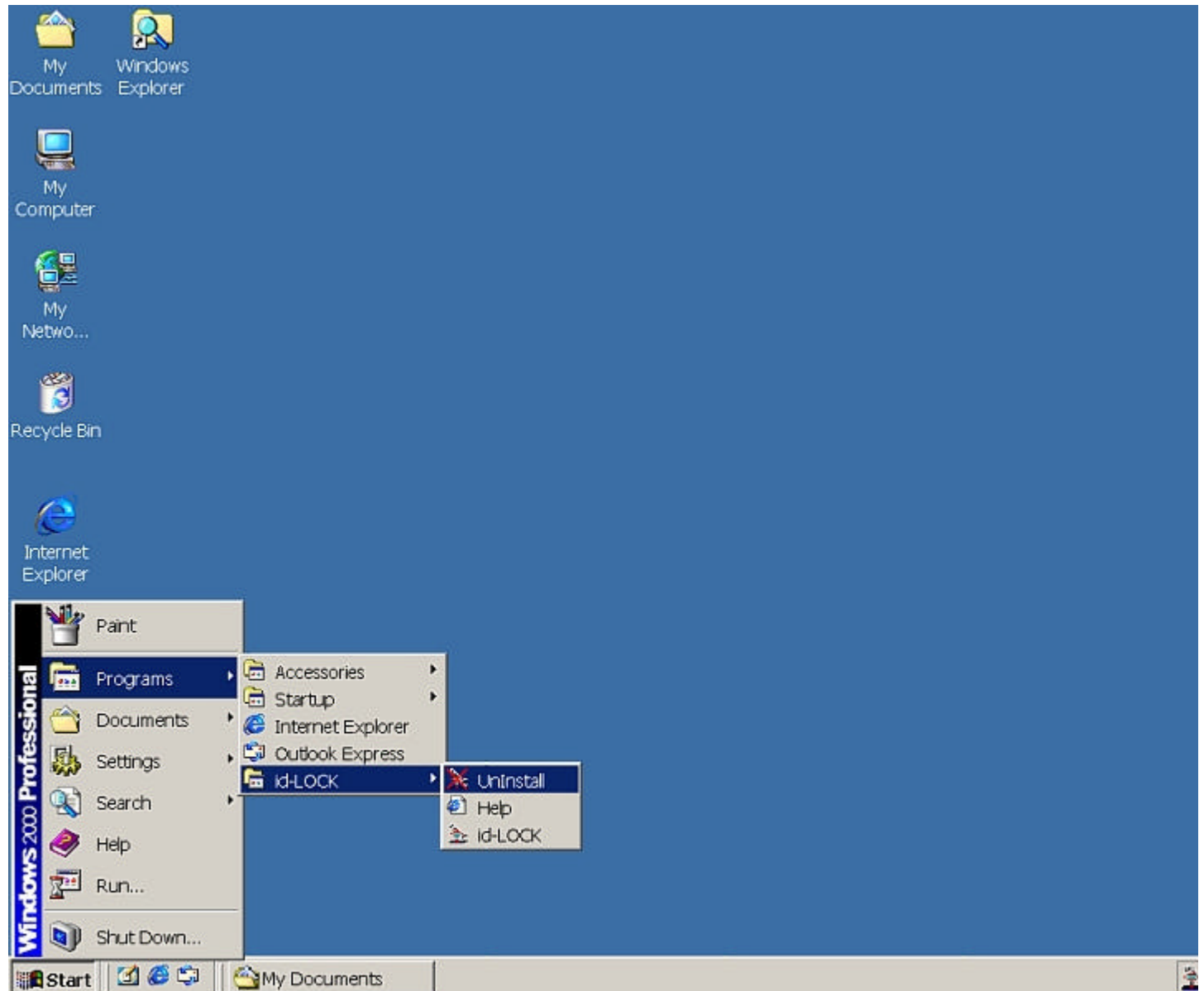


4. If the ID Validation process exceeds time limit, check if any of the following situations apply and take recommended actions.
- The transmitter is off . >>> Turn on the transmitter and make sure its LED blinks.
  - More then two transmitters are nearby. >>> Follow validation procedure above to validate again.
  - Off air RF interference. >>> Bring transmitter closer to the receiver until receiver's LED blinks.

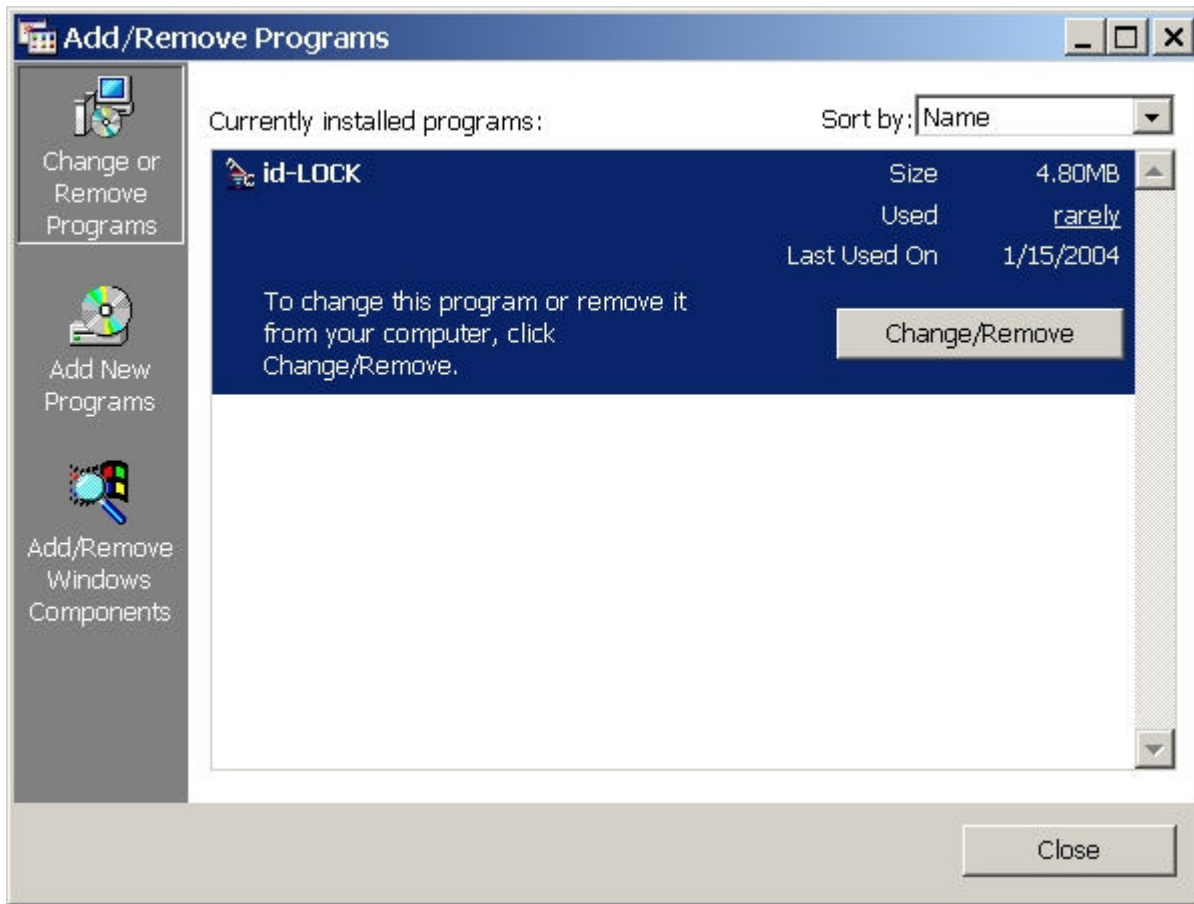
## Software Removal

There are two ways for uninstalling **id-LOCK** software from your PC.

1. Click the **Start** button in system tray. In **Programs** menu, select **Uninstall** in **id-LOCK** menu.

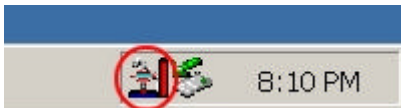


2. or, click the **Start** button, select the **Control Panel** menu, click the **Add or Remove Programs** icon, and then select the **id-LOCK** program in the **Change/Remove** menu.



## VI. USER GUIDE

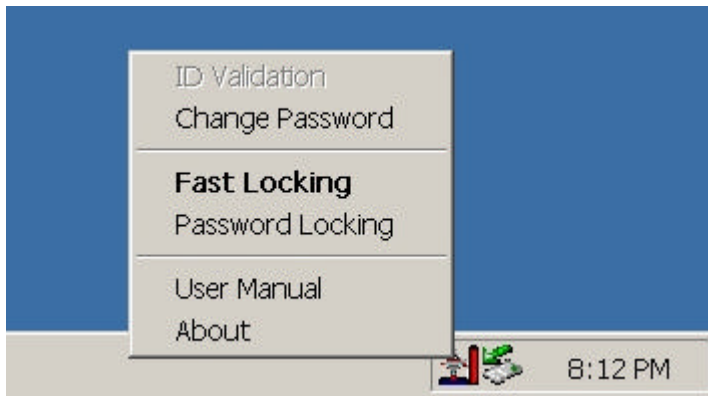
1. The following taskbar icon indicates **Normal Operation Mode** of **id-LOCK**. It means that the transmitter is within effective range covered by the receiver therefore the PC can be operated normally.



2. The following taskbar icon indicates the **Lock-down Mode** of your PC. When user carrying the transmitter walks away from PC (receiver) beyond the effective range or, the transmitter is manually turned off, the receiver loses transmitter's signal and therefore the PC enters **Lock-down Mode**.



3. Move cursor to the **id-LOCK** taskbar icon and click the right button of mouse to bring up the menu for selecting **ID Validation**, **Change Password**, **Fast Locking**, **Password Locking**, **User Manual** and **About**.

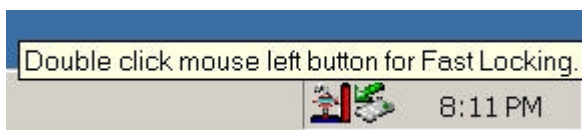


**a. ID Validation:** ID Validation is required each time a new transmitter is used, for ID validation.

**b. Change Password:** Following window will pop up for changing the password.

**c. Fast Locking:**

Click this option to force the PC to enter the **Lock-down Mode**, ignoring the signal from transmitter. A short-cut is shown as image below. Move cursor to the **id-LOCK** taskbar icon and double-clicking the left button of mouse, Fast Locking function will be activated.



**d. Password Locking:** A valid password is required to unlock the PC after entering this mode.

**e. User Manual:** Clicking on this option brings up this user manual.

**f. About:** Information about this **id-LOCK**.

## VII. FREQUENTLY ASKED QUESTIONS

Q1 : Why can not my PC be locked?

A1 : The effective range may be affected due to electromagnetic interference in the surrounding area. Adjust the angle or orientation of receiver (USB extension cable may be connected) to improve sensitivity. Use **Fast Locking** or **Password Locking** to enter the **Lock-down Mode**, or simply switch off the power of transmitter.

Q2 : What operating system does **id-LOCK** support?

A2 : It supports Windows 98 SE, ME, 2000 and XP. You also need an available USB port on your PC for installing the receiver.

Q3 : Will **id-LOCK** affect or terminate software programs under run?

A3 : No. It locks the screen of your PC while running programs remain unaffected.

Q4 : Can the **Lock-down Mode** be activated simply with the installation of the software driver?

A4 : Yes. However, the hardware must be successfully installed first.

Q5 : How many alpha-numeric characters can be set for the password?

A5 : 64 characters/numbers maximum (case insensitive).

Q6 : Why does the battery die so quickly?

A6 : The CR2032 (3V) battery should be able to support about 2,000 hours of continuous usage. Due to leakage of the battery itself, its life may be shortened. Please pay attention to the expiration date of the battery especially.

Q7 : Can multiple PC's be controlled by a single transmitter?

A7 : Yes, as long as the receiver and software driver were installed on each PC you would like to control and the transmitter must be ratified on each PC.

Q8 : Why does the transmitter unable to control PC even after the ID validation has been completed ?

A9 : There may have been more than one ID validation process under going at the same time. Simply do the ID validation again by clicking "**ID Validation**" option.

## VIII. OPERATION NOTICE

- If the **id-LOCK** receiver is plugged into PC through a USB Hub, please provide required power for the USB Hub with approved power adaptor or the signal range may be adversely affected.
- If necessary, use USB extension cable to connect the receiver with PC for preventing unwanted EMI (Electromagnetic Interference).
- Avoid placing mobile phone, transceiver or RF equipment in use nearby the receiver.
- Avoid using **id-LOCK** with PC on the metal surface stand.
- Avoid exposing the product to excessive moisture or vibration.