

# ***Ti*TAN T8**

**Industrial PC**

**[ User's guide ]**



SAMMI Information Systems Co., Ltd.

**Version 1.1 on July 2011**

**Disclaimer**

The information in this document is subject to change without notice. The manufacturer makes no representations or warranties regarding the contents of this manual and specifically disclaims any implied warranties of merchantability or fitness for any particular purpose. Furthermore, the manufacturer reserves the right to revise this publication or make changes in the specifications of the product described within it at any time without notice and without obligation to notify any person of such revision.

**Trademarks**

SmarTerminal and TiTan T8, Microsoft, Windows and other trademarks and product names used in this manual are the properties of their respective owners and are acknowledged.

**Copyright**

This publication, including all photographs, illustrations and software, is protected under international copyright laws, with all rights reserved. Neither this manual, nor any of the material contained herein, may be reproduced without the express written consent of the manufacturer.

## Head Quarters

**Sammi information Systems Co., Ltd.**  
**Corporate Headquarters**

Address : 11F Kolon Digital Tower Aston Bldg, Gasan Digital 1Ro 212 Geumcheon-gu, Seoul, 153-708, Korea  
Telephone : 82-2-790-5505  
Fax : 82-2-790-5509

Email: [sales@sammicomputer.co.kr](mailto:sales@sammicomputer.co.kr)  
Web: [www.sammicomputer.co.kr](http://www.sammicomputer.co.kr)

## US Office

**Smarterminal Computers, Inc.**  
**US Subsidiary of Sammi information Systems co., Ltd**  
**Marketing and Sales Office**

Address : 5300 Orange Ave, Suite 212, Cypress, CA 90630  
Telephone : 1-714-761-5300  
Fax : 1-562-252-8272

Email: [sales@smarterminal.com](mailto:sales@smarterminal.com)  
Web: [www.smarterminal.com](http://www.smarterminal.com)

**Limited Warranty**

SmarTerminal warrants its products to be free from defects in materials and workmanship and to conform to SmarTerminal published specifications applicable to the products purchased at the time of shipment. This warranty does not cover any product which is (i) improperly installed or used; (ii) damaged by accident or negligence, including failure to follow the proper maintenance, service, and cleaning schedule; or (iii) damaged as a result of (A) modification or alteration by the purchaser or other party, (B) excessive voltage or current supplied to or drawn from the interface connections, (C) static electricity or electro-static discharge, (D) operation under conditions beyond the specified operating parameters, or (E) repair or service of the product by anyone other than SmarTerminal or its authorized representatives.

This warranty shall extend from the time of shipment for the duration published by SmarTerminal for the product at the time of purchase ("Warranty Period"). Any defective product must be returned (at purchaser's expense) during the Warranty Period to SmarTerminal's factory or authorized service center for inspection. No product will be accepted by SmarTerminal without a Return Materials Authorization, which may be obtained by contacting SmarTerminal. In the event that the product is returned to SmarTerminal or its authorized service center within the Warranty Period and SmarTerminal determines to its satisfaction that the product is defective due to defects in materials or workmanship, SmarTerminal at its sole option, will either repair or replace the product without charge, except for return shipping to SmarTerminal.

EXCEPT AS MAY BE OTHERWISE PROVIDED BY APPLICABLE LAW, THE FOREGOING WARRANTY IS IN LIEU OF ALL OTHER COVENANTS OR WARRANTIES, EITHER EXPRESSED OR IMPLIED, ORAL OR WRITTEN, INCLUDING, WITHOUT LIMITATION, ANY IMPLIED WARRANTIES OF MERCHANTABILITY OR FITNESS FOR A PARTICULAR PURPOSE.

**Important safety information**

Before you use the TiTan T8 (referred to as the TiTAN T8), read these safety instructions and the operation instructions in this handbook.

Failure to observe all these instructions voids the Limited Warranty and may lead to suspension or denial of services to the offender, or legal action, or both.

Follow any special regulations governing the use of the TiTAN T8 and, if radio enabled, always switch it off in areas where radio devices are forbidden or when the radio device can cause interference or danger.

Always follow any safety laws and regulations pertaining to the use of cell phones and two-way radios, because these laws and regulations typically apply to the use of the wireless-enabled TiTAN T8.

Observe all restrictions on the use of radio equipment in fuel depots (fuel storage and distribution areas), chemical plants, and wherever blasting operations are in progress or in any area in which restrictions on radio transmissions are imposed.

Switch off the TiTAN T8 when in an aircraft. The TiTAN T8 is not FAA-approved for use on aircraft. The effect of the use of the TiTAN T8 in aircraft is unknown. Using the TiTAN T8 in an aircraft may affect aircraft instrumentation, communication, and performance; may disrupt the network; and may be illegal.

Operating the wireless-enabled TiTAN T8 may interfere with the functioning of inadequately protected medical devices such as pacemakers.

Consult a physician or the manufacturer of the medical device if you have any questions. Radio signals from your TiTAN T8 will not affect the operation of most modern equipment, but certain electronic equipment, including automotive systems, may not be shielded against radio signals from your TiTAN T8.

Check with the manufacturer of your motor vehicle or the manufacturer's representative to determine whether using the TiTAN T8 will present any safety issues.

Avoid using the TiTAN T8 in any environment that requires your full attention, such as when driving a vehicle. If you need to use your TiTAN T8 while driving, have a passenger use it for you or find a safe location to halt your vehicle.

**WARNING**

Using any other type of battery can be dangerous and can disable the TiTAN T8.

**WARNING**

Do not use any dock or any other accessory or attachment that is not manufactured or supplied by SmarTerminal or an authorized SmarTerminal accessories supplier.

Use of any accessory or attachment that is not supplied or approved for use with the TiTAN T8 by SmarTerminal is not permitted because it may cause hazards.

Operate the TiTAN T8 only from the type of power source indicated on the marking label. Route power supply cords so that they are not likely to be walked on or pinched by items placed upon or against them.

Pay particular attention to cords at plugs and convenience receptacles, and at the point where cords exit from the TiTAN T8 or its dock. Do not overload wall outlets, extension cords, or integral convenience receptacles because this can cause fire or electric shock.

Unplug the TiTAN T8 and refer the TiTAN T8 and dock for service to qualified service personnel if any of the following conditions occur:

- The power supply cord or plug is damaged.
- The TiTAN T8 or dock does not operate normally when you follow the instructions in this book.
- The TiTAN T8 or dock exhibits a distinct change in performance.

Adjust only controls for which there are instructions in this book.

An improper adjustment of other controls can result in damage and may require extensive work by a qualified technician to restore the TiTAN T8 or dock to normal operation.

**CAUTION**

Avoid prolonged physical contact with the exposed metal surfaces on the front and back of the TiTAN T8.

Operation while the TiTAN T8 may not feel hot to the touch, be careful when you remove a PC card that has been used for a long time, because the card may be hot.

## Contents

Welcome .....	8
About this Manual .....	9
Ordering Information .....	9
System Specifications .....	10
1 Getting Started .....	11
1.1 Getting started.....	12
Desktop docking station .....	12
Make sure you have everything .....	12
1.2 Getting to know your TiTAN T8 .....	12
1.2.1 Front view .....	12
1.2.2 Rear view .....	17
1.2.3 Top view .....	18
1.2.4 Bottom view .....	19
1.2.5 Right view .....	오류! 책갈피가 정의되어 있지 않습니다.
1.2.6 Left view .....	오류! 책갈피가 정의되어 있지 않습니다.
2 Quick Start .....	20
2.1 Turning On the TiTan T8 for the First Time .....	21
2.2 Turning Off the TiTan T8 .....	21
3 Using a titan utility .....	22
Device Control .....	24
WIFI Enable/Disable .....	24
Bluetooth Enable/Disable .....	25
Mobile Enable/Disable .....	26
GPS Enable/Disable .....	28
CAM-F Enable/Disable .....	29
CAM-R Enable/Disable .....	30
Application Launch .....	31
External Display .....	31
Display Rotate .....	32
Internet Explorer .....	33
WiFi Setup .....	33
Bluetooth Setup .....	34
Seeking Bar (Brightness and sound control) .....	34
Brightness control .....	34
Sound Volume Control .....	34
For extra information, and help .....	35
'Fn' button on Titan T8 .....	35
Help Button .....	35
Configure Touchscreen In Windows Vista / 7 .....	36
4 Power management .....	37
4.1 Checking the Battery Level .....	38
4.2 Monitoring Battery Power .....	38
5 Calibration .....	40
PenMount Control Panel .....	41

6 Trouble shooting guide .....	45
Troubleshooting for Wireless.....	46
Troubleshooting for battery.....	46
Troubleshooting for Bluetooth problem .....	47
Troubleshooting for Display Problem.....	47
Troubleshooting for Date/Time Problems .....	47
Troubleshooting for Sound Problems .....	47
7 Appendix .....	49
FCC Compliance Statement.....	50



## **Welcome**

Congratulations on selecting the TiTan T8, supported by Microsoft Windows®, XP, Vista, 7.

This unique TiTAN T8 offers a special combination of features that make it an ideal partner for a wide range of applications.

**About this Manual**

This User's Manual is intended for experienced users and integrators with hardware knowledge of personal computers. If you are not sure about any description in this User's Manual, please consult your vendor before further handling.

The following chapters contained in this manual are:

Chapter 1: Getting Started - Basic functions of the TiTAN T8.

Chapter 2: Starting Titan Utility - Using the system management software included with the TiTAN T8.

Chapter 3: Maintenance and Troubleshooting - How to maintain, calibrate and replace components;  
a troubleshooting FAQ details how to diagnose and correct typical problems.

**Ordering Information**

Ordering no.	Description
	TiTan T8
	battery
	AC/DC Adapter (AC100-220V Input)
	Cigar jack adapter
	GPRS Antenna
	GPS Antenna

**System Specifications**

The TiTan T8 meets the following specifications. Unless otherwise noted, all the specifications listed below are subject to change without prior notification.

**▶ DISPLAY**

- Sunlight Readerable 8.4" TFT touch screen display, SVGA 800 x 600, 600NIT
- XGA 1024 x 768 provide on 3Q 2011

**▶ ENVIRONMENT**

- Storage Temperature : -20° to 60°C (-4° to 140°F)
- Humidity : 5 % to 95 % RH Non-condensing
- Vibration and Shock protection : MIL-STD-810F
- Operating Temperature :
  - Standard : -20° to 50°C (-4° to 122°F) Solid State
  - 0° to 50°C (32° to 122°F) Rotating
- Extreme Operating Temperature:
  - -30° to 50°C (-22° to 122°F) - Solid State Drive
- Environmental Protection : Sealed to IP65

**▶ MEMORY AND STORAGE**

- DDR2 1GB RAM standard, expandable to 2GB

**▶ MICROPROCESSOR**

- Intel® Atom, N450 1.66GHz Processor

**▶ OPERATING SYSTEM**

- Windows XP Professional
- Windows XP Embedded
- Windows 7 Professional
- Windows 7 Ultimate

**▶ HARD DRIVE OPTIONS**

- SATA 2 320G Hard Disk or higher
- Solid State Drive

**▶ NETWORK CHARACTERISTICS**

- Cisco® Compatible 802.11 a/b/g/n radio with industry standard wireless security protocols
- 10/100/1000 base-T Ethernet
- GPS : 9600bps
- Bluetooth (v2.1 + EDR class 2)
- GPRS

**▶ INTERFACES**

- (1) Standard Serial Ports DB9
- (1) 2 x Digital Input / 2 x Digital Output
- RF Antenna for GPS and mobile
- Audio 3.5mm stereo jack / Microphone In
- (2) USB Host ports ver 2.0
- (1) Docking connector (60pin)

**▶ CONTROL BUTTON**

- ESC, Enter, Menu, Navigation Keys, Numeric Keypad
- LCD Backlight Control, Volume control

**▶ SOFTWARE**

- TITAN Utility
- TITAN Camera

**▶ BATTERY**

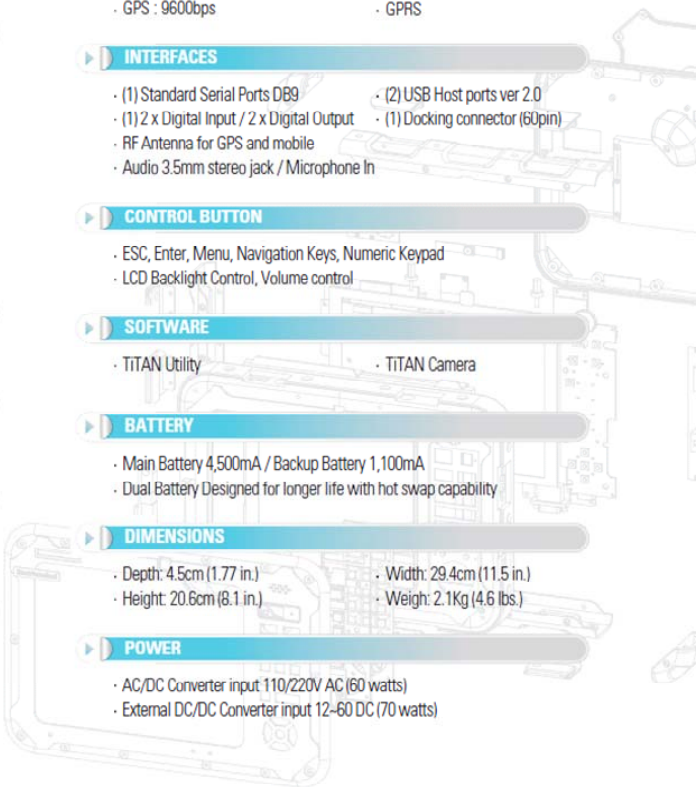
- Main Battery 4,500mA / Backup Battery 1,100mA
- Dual Battery Designed for longer life with hot swap capability

**▶ DIMENSIONS**

- Depth: 4.5cm (1.77 in.)
- Height: 20.6cm (8.1 in.)
- Width: 29.4cm (11.5 in.)
- Weight: 2.1Kg (4.6 lbs.)

**▶ POWER**

- AC/DC Converter input 110/220V AC (60 watts)
- External DC/DC Converter input 12-60 DC (70 watts)



# Chapter 1

## Getting Started

## 1.1 Getting started

This chapter gives you an overview of your TiTAN T8 and includes a quick-start guide to TiTAN T8 keys. Industrial PC(TiTAN T8) use to be mounted in vehicle or production factory line etc.

### docking station

Mounting TiTAN T8 on docking station follow the steps given below.

- Mount TiTan T8 on mounting unit so that the bottom notch fits in the Pin holder of the mounting unit so as it will look like in the figure below.
- As per the requirement, connect Power cord to the DC port at the back of the docking station.
- Instead of AC/DC adapter TiTAN T8 can operate on batteries, so please check if the battery is connected at the rear side of the TiTAN T8.
- Switch on the power button.
- Connect PS/2 keyboard as well as USB mouse if required.

### Make sure you have everything

After opening the package, carefully inspect the contents. If any of the items are missing or appear damaged, contact your dealer. The shipping carton should contain the following:

TiTAN T8  
AC/DC Adaptor  
Lithium-Ion Rechargeable Battery Pack  
Power cord  
Quick Reference guide

### Optional accessories

Docking station (Vehicle)

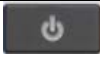



## 1.2 Getting to know your TiTAN T8

### 1.2.1 Front view



→

**LED Indicator**

Icon	Light	Description
	Red	Power is on
	Flashing Red	System is in standby mode
	Blue	WLAN is enabled
	No light	WLAN is not powered
	Green	TiTAN is reading from or writing to the built in SSD or HDD
	No light	HDD is idle
	Red	Battery is charging
	Green	Battery is fully charged

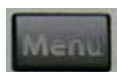
**Power & Reset Button**

When clicking power button (when you turn on), the button stays with red light.

Reset Button works simply as reboot, and this doesn't remove programs or anything just as general computers.

**ESC Button**

Works likewise as computer.

**Menu Button**

This button makes Titan Utility to pop up to the display screen if it was minimized on the Tray.

**Numeric Key Button**

1) When 'Fn' is enabled: simply works as number button

2) When 'Fn' is disabled: use as Key Map definition function. (to help memorize functions, the drawings under the numbers are actually related each function. For example, #5 button shows radar wave, indicating WiFi On/Off)

[Key Map]

KEYS	Function
Fn + 0	F4
Fn + 1	F3
Fn + 2	Turn on/off CDMA and 3G/GPRS
Fn + 3	Key Pad Lock
Fn + 4	F2 (BIOS Setup Key)
Fn + 5	Turn on/off WLAN
Fn + 6	Touch Calibration
Fn + 7	F1 (BIOS Multi-Boot)
Fn + 8	Display Rotate
Fn + 9	On Screen Keyboard



### Key Pad Lock / Unlock

The main purpose of placing a keypad lock[Fn+3] to a TiTAN T8 is to prevent accidental key input.

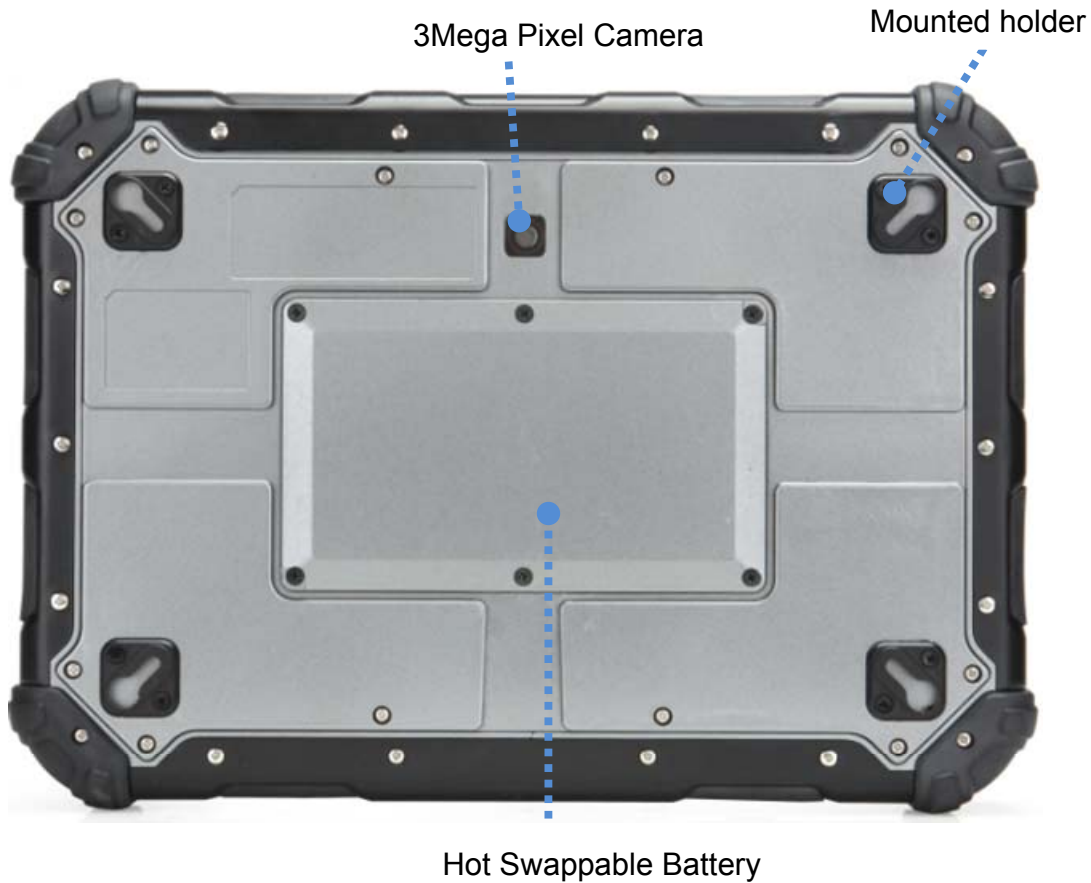
You can unlock the keypad via TiTan Utility.



### Navigation Key (arrow keys)



- 1) When 'Fn' is disabled: serves simply as arrow keys
- 2) When 'Fn' is enabled: works as Seeking Bar in Titan Utility
  - Left / Right: Brightness control
  - Up / Down: Sound Device volume

**1.2.2 Rear view****Camera**

The 3MP Color Camera is located on the back panel of the computer. The camera can be used for picture capture as well as streaming video.

**Hot-Swappable Battery**

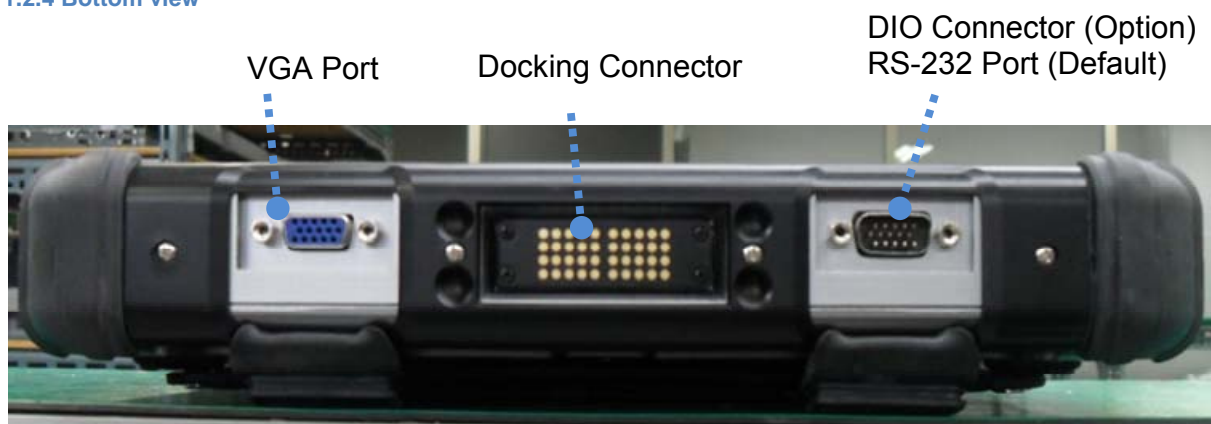
Refresh your power supply without shutting down. With a 30 minute swap time, the hot-swappable battery pack can easily be replaced in the field

1.2.3 Top view

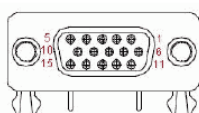
GPRS Antenna



GPRS Antenna

**1.2.4 Bottom view****VGA**

D-Sub 15 pin VGA connector for display output



Signal Name	Pin	Pin	Signal Name
Red	1	2	Green
Blue	3	4	NC
GND	5	6	GND
GND	7	8	GND
VCC	9	10	GND
NC	11	12	DDC data
HSYNC	13	14	VSYNC
DDC clock	15		

**Docking connector**

When seated in a TiTan T8 peripheral, the terminal is powered, the batteries charged, and communication occurs via this connector.

**Connector Layout**

	Column 1	Column 2	Column 3	Column 4	Column 5	Column 6	Column 7	Column 8	Column 9	Column 10
Row 0	VCC	VCC	LinkLed +	+5V (USB)	CD	RI	BI_DA+	BI_DA-	GND	GND
Row 1	VCC	VCC	LinkLed -	DM	RXD	CTS	BI_DB+	BI_DB-	GND	GND
Row 2	VCC	VCC	ActLed+	DP	TXD	RTS	BI_DC+	BI_DC-	GND	GND
Row 3	N3	N2	ActLed-	N1	DTR	DSR	BI_DD+	BI_DD-	GND	GND

**DIO Connector Pin Map**

Connector	DIO (DB15 Male)							
Pin map	1	2	3	4	5	6	7	
	DI0+	DI0-	DI1+	DI1-	GND	DI2+	DI2-	
	8	9	10	11	12	13	14	15
	DI3+	DI3-	GND	DO0+	DO0-	DO1+	DO1-	GND

## Chapter 2

### Quick Start

## 2.1 Turning On the TiTan T8 for the First Time

Use the following instructions the first time an TiTan T8 is turned on. After which you will only need to press the power button on the keypad as TiTan T8 should be fully charged and ready to go.

To turn on the TiTan T8

1. Connect the AC adapter power cord to the AC adapter.
2. Connect the AC adapter power cord to an AC outlet.
3. Connect the AC adapter to the DC power port on the left side of your TiTan T8.
4. Press the power button on the keypad to turn on the power.



## 2.2 Turning Off the TiTan T8

Turning off the TiTan T8 properly is important to maintaining your rugged TiTan T8.

**To turn off the TiTan T8**

Select **Start > Shut down**.

**Caution:** Shutting off the TiTan T8 improperly may result in loss of data.

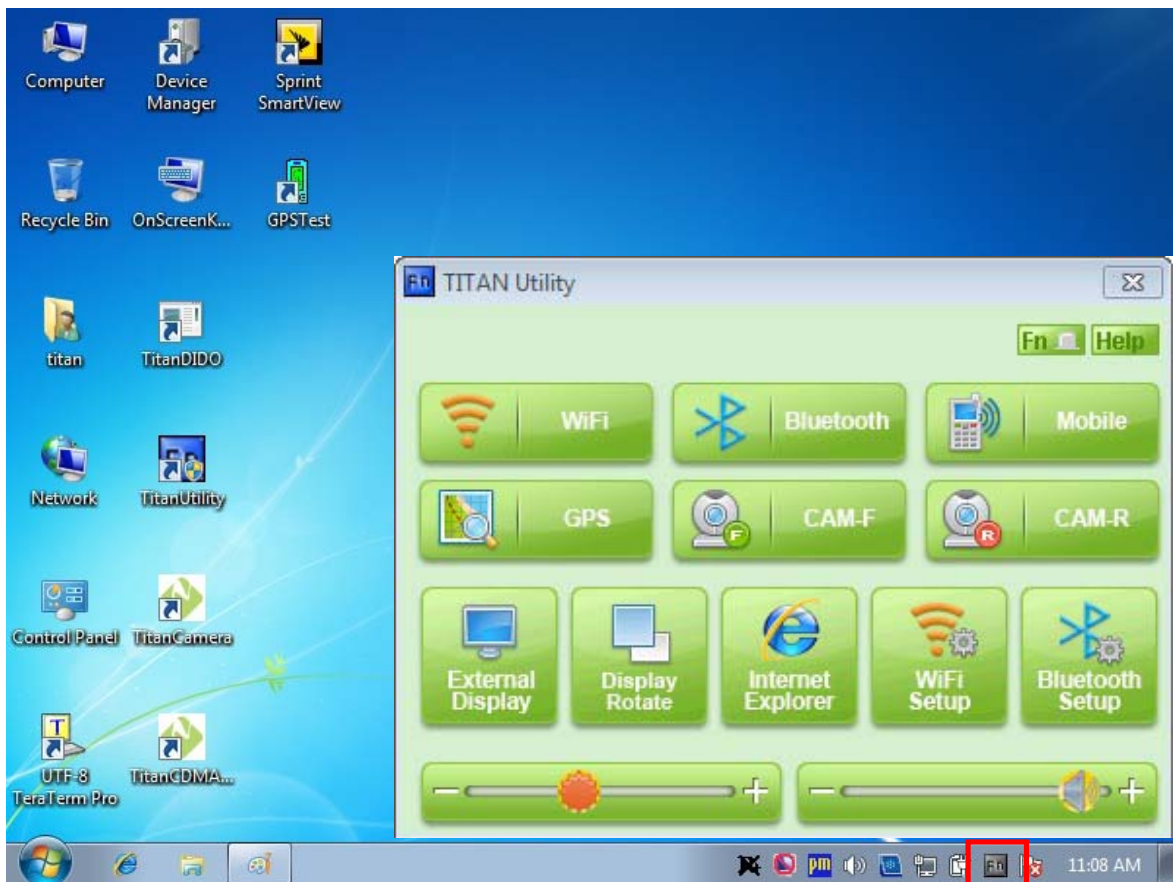
## Chapter 3

### Using a titan utility

This Chapter will give you how to use menu function including basic hardware function adjustment and the Titan Utility software that is very easy & helpful for operating the computer.

As TiTAN T8 start, Titan Utility will then automatically run (start) through forwarding process.

As illustrated below, on the bottom right side of Tray Icon, you can see the Titan Utility icon minimized indicated as a red square.



To show Titan Utility, simply double click on the Tray Icon if it's minimized.



If 'Fn' button is enabled (pressed down), then you will see the tray icon like below, shown as blue color





If 'Fn' button is not active (or not pressed down, not touched), then gray color as below.



#### Device Control

You can also utilize each device respectively by using Titan Utility to toggle it as 'Enable / Disable'



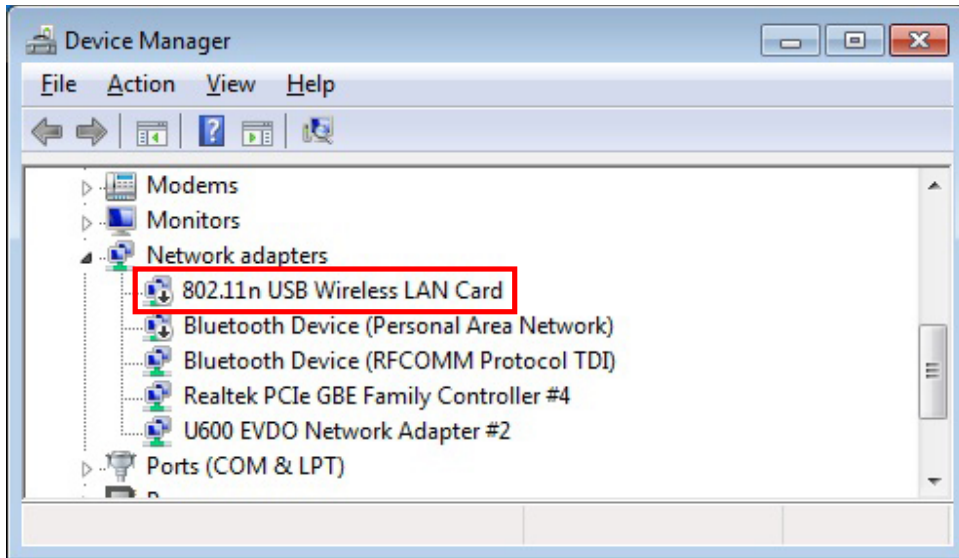
#### WiFi Enable/Disable



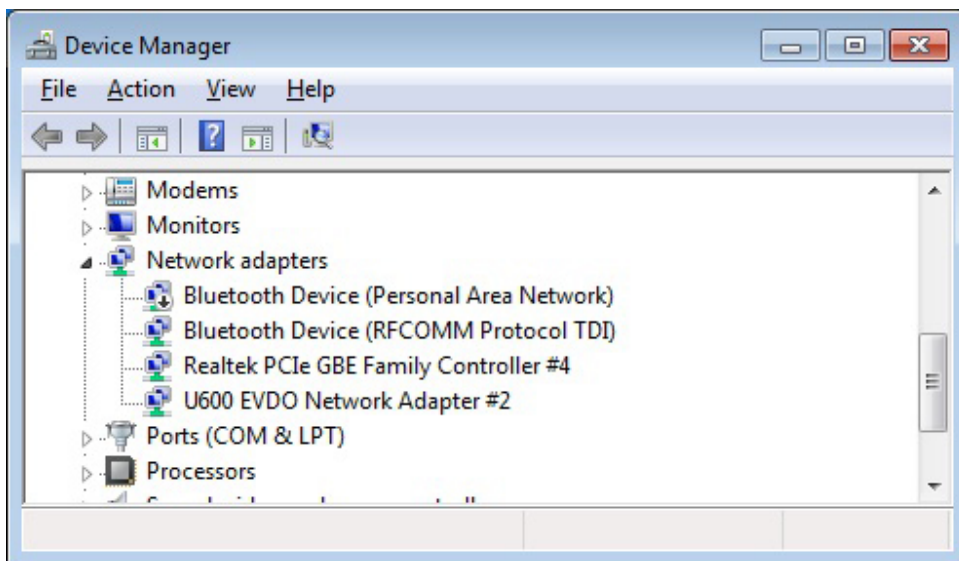
When clicking Wifi button from the Titan Utility, you can enable / disable of Titan T8.

When disabling the Device, you can't access (connect) to WiFi.

1) When WiFi is enabled: You can check Wireless LAN Device from the Device Manager as illustrated below.



2) When WiFi is disabled: You won't be able to see nor check Wireless LAN Device from the Device Manager.



Even if you go to Network -> Property -> adapter, you still won't be able to see nor check it.

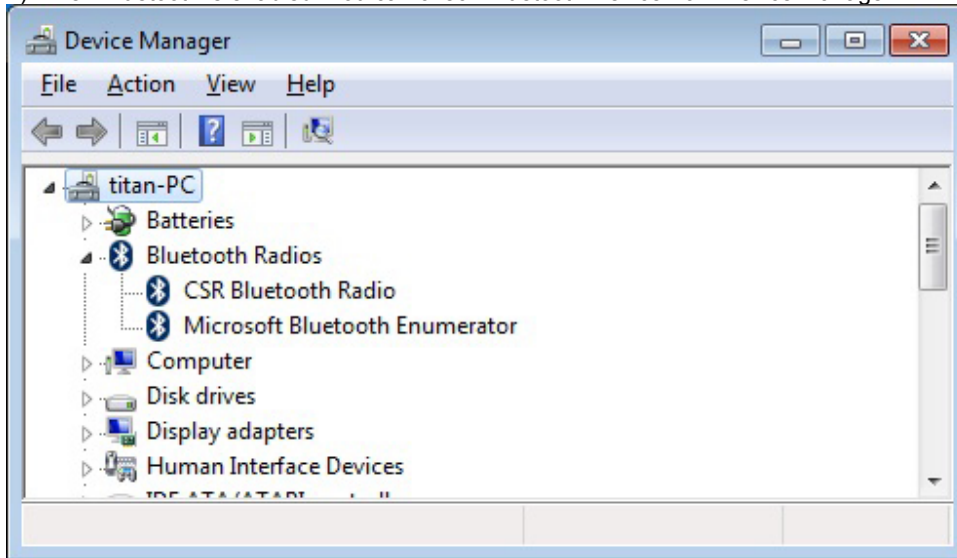
#### Bluetooth Enable/Disable



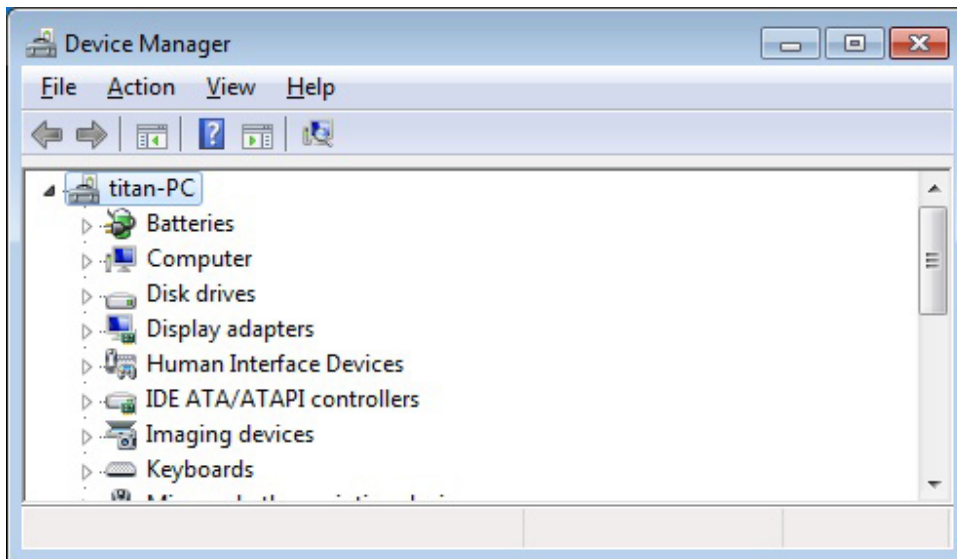
When clicking Bluetooth button at the Titan Utility, you can also enable / disable Bluetooth Device of Titan T8.

When disabling Device, it's impossible to access to Bluetooth.

1) When Bluetooth is enabled: You can check Bluetooth Device from Device Manager.



2) When WiFi is disabled: WiFi Device is disabled as well. From the Device Manager, you will see Bluetooth Device has disappeared as shown below.



#### Mobile Enable/Disable



When clicking 'Mobile' button from the Titan Utility, you can enable / disable of CDMA Device or GPRS/GSM of Titan T8.

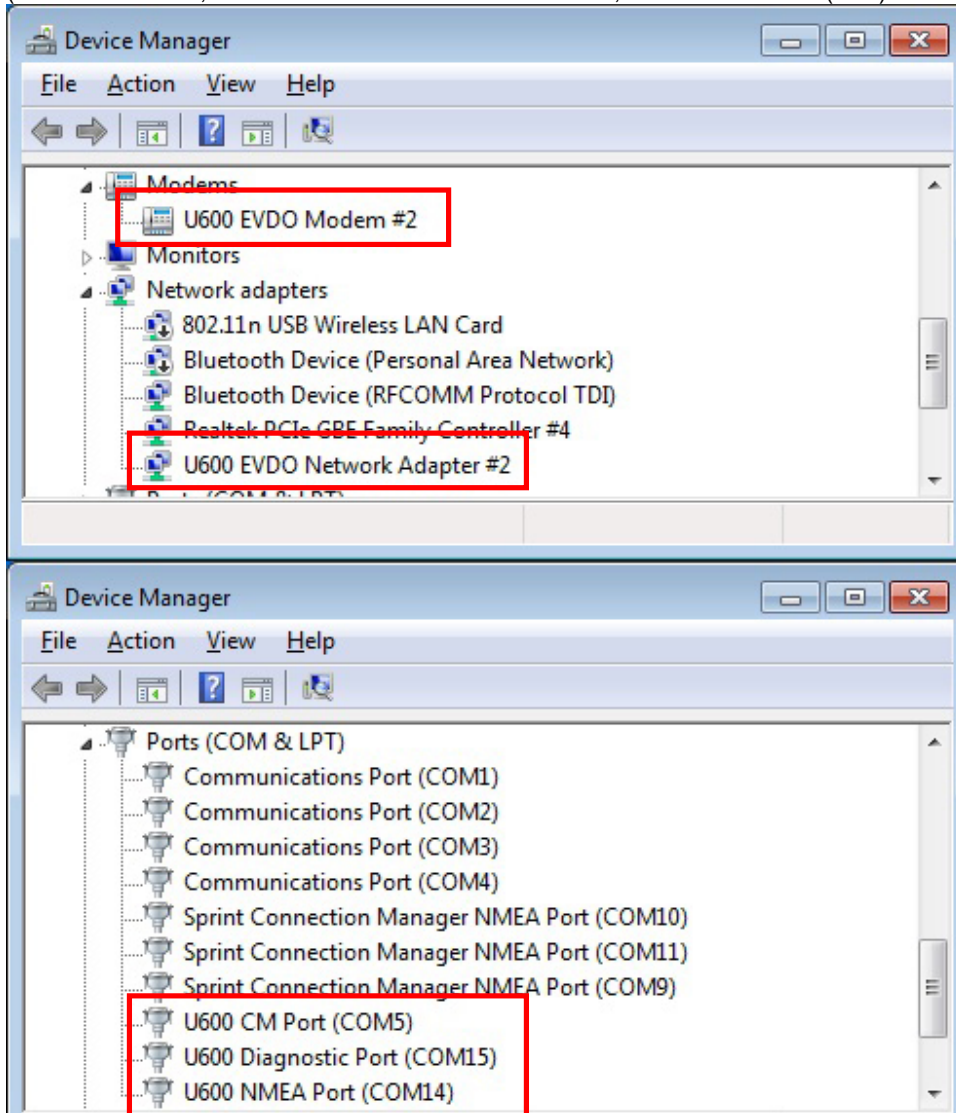
When disabling Mobile Device, it's impossible to connect or access through 2G.

1) For CDMA model, when 'Mobile' button is enabled:

CDMA 2G

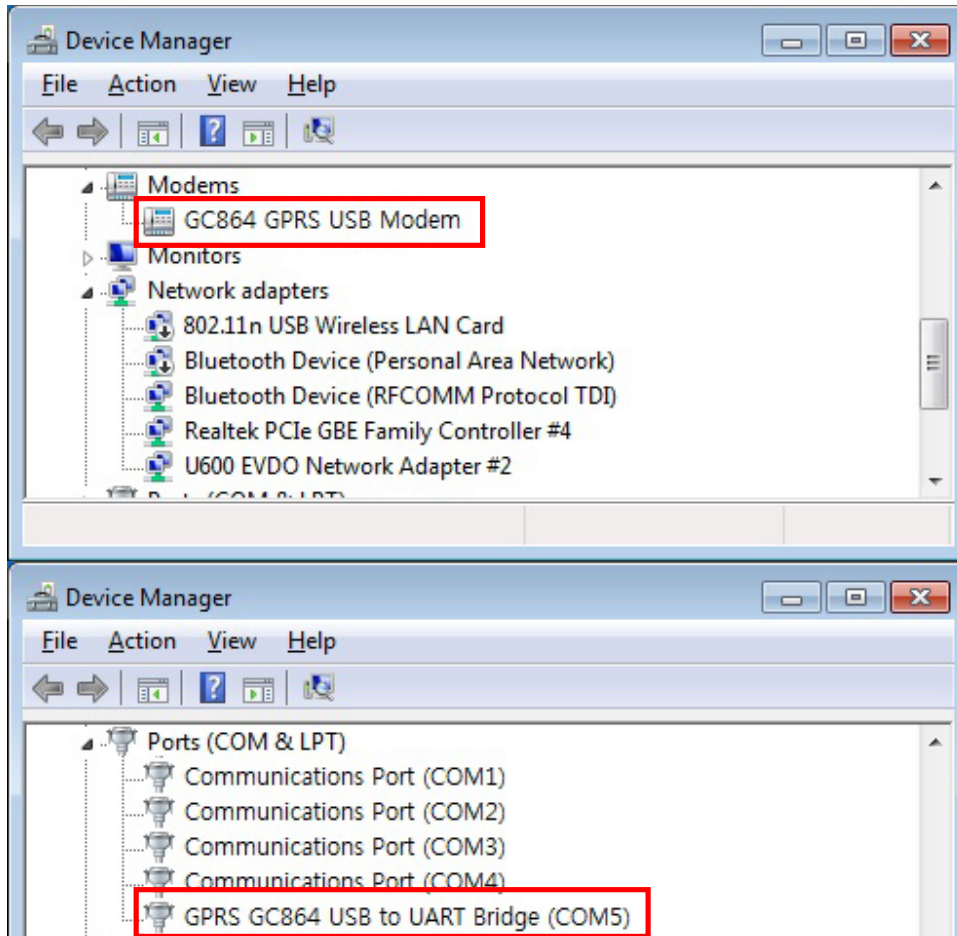
As shown below, U600 EVDO Modem (for phone connection), U600 EVDO Network Adapter (for WWAN), 3 serial ports (for GPS data base, serial connection etc.), when they are shown in the Device Manager as red squares, it means CDMA model is enabled (working normally).

(For additional info, U600 CM Port's default value is COM5, and the administrator (user) of computer can change it.)



2) When disabling 'Mobile' button of GPRS/GSM model:

If you see 'GC864 GPRS USB Modem', 'GPRS GC864 USB to UART Bridge' at the Device Manager, it means GPRS is disabled. It's illustrated as below in red squares.



#### GPS Enable/Disable



When clicking 'GPS' button in Titan Utility, you can also enable / disable the function of GPS of Titan T8.

When disabling the Device, access (or connect) to GPS becomes impossible.

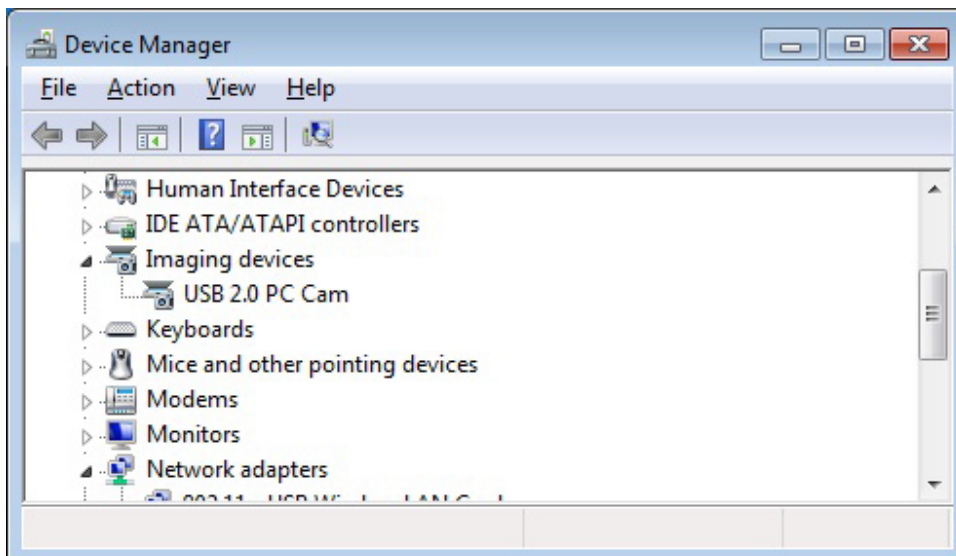
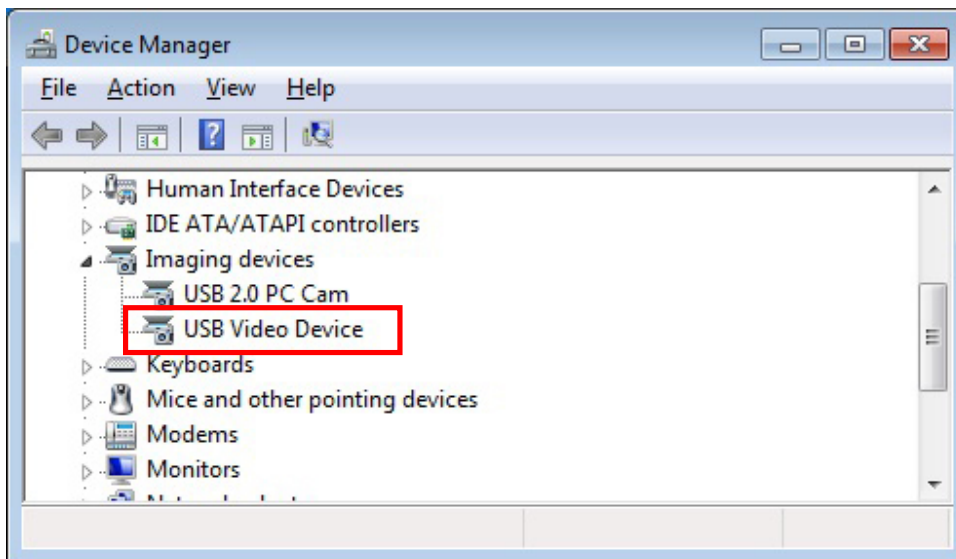
\*It is important to note that when CDMA is disabled, GPS will also be disabled simultaneously, it's normally done by mechanism of the computer.

### CAM-F Enable/Disable



When clicking 'CAM-F' button from Titan Utility, you can enable / disable the Device of frontal cam of Titan T8.

When disabling the Device, you can't use the cam at all, the 'USB Video Device' won't be shown as illustrated as below to prove.



In order to see if CAM is working normally, simply go to "Titan Camera" (Use the Titan Camera Shortcut in the desktop background)

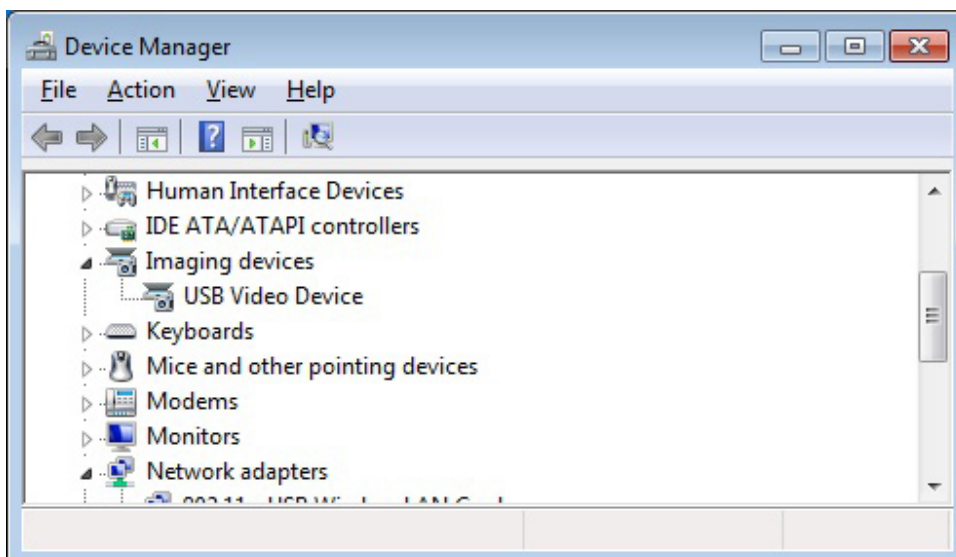
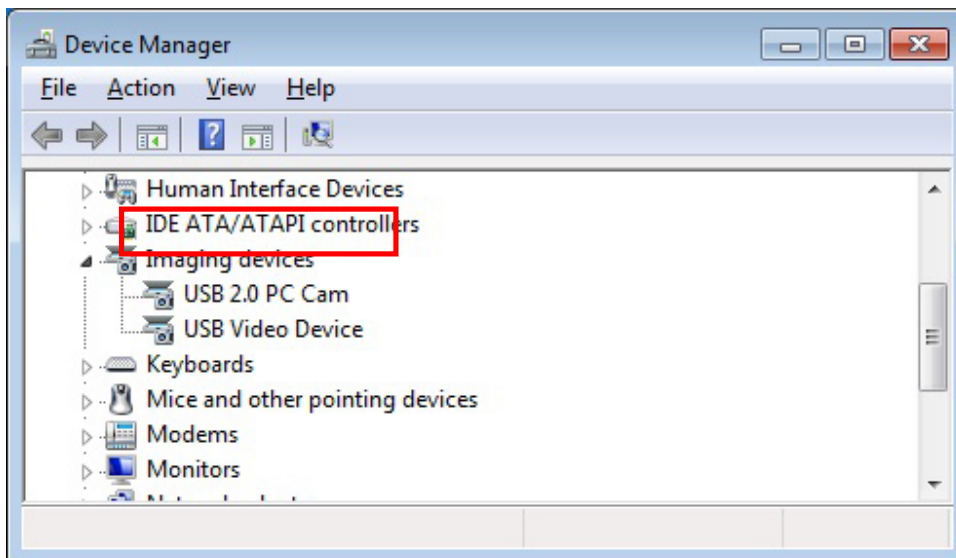
**\*caution:** When updating USB Video Device Driver, the frontal camera might not work properly.



**CAM-R Enable/Disable**

When clicking 'CAM-R' button from Titan Utility, you can enable / disable the Device of the rear side of the cam.

Once the device becomes disabled, the rear side cam will not work.



In order to see if rear cam is working, go to "Titan Camera" application. ("Titan Camera" shortcut in the desktop background)

### Application Launch



By using the Titan Utility, you can launch the application related to each function.

### External Display



When clicking 'External Display' button from Titan Utility, it will information regarding Display, and using this application, you can change the display settings such as video settings as shown below.





### Display Rotate



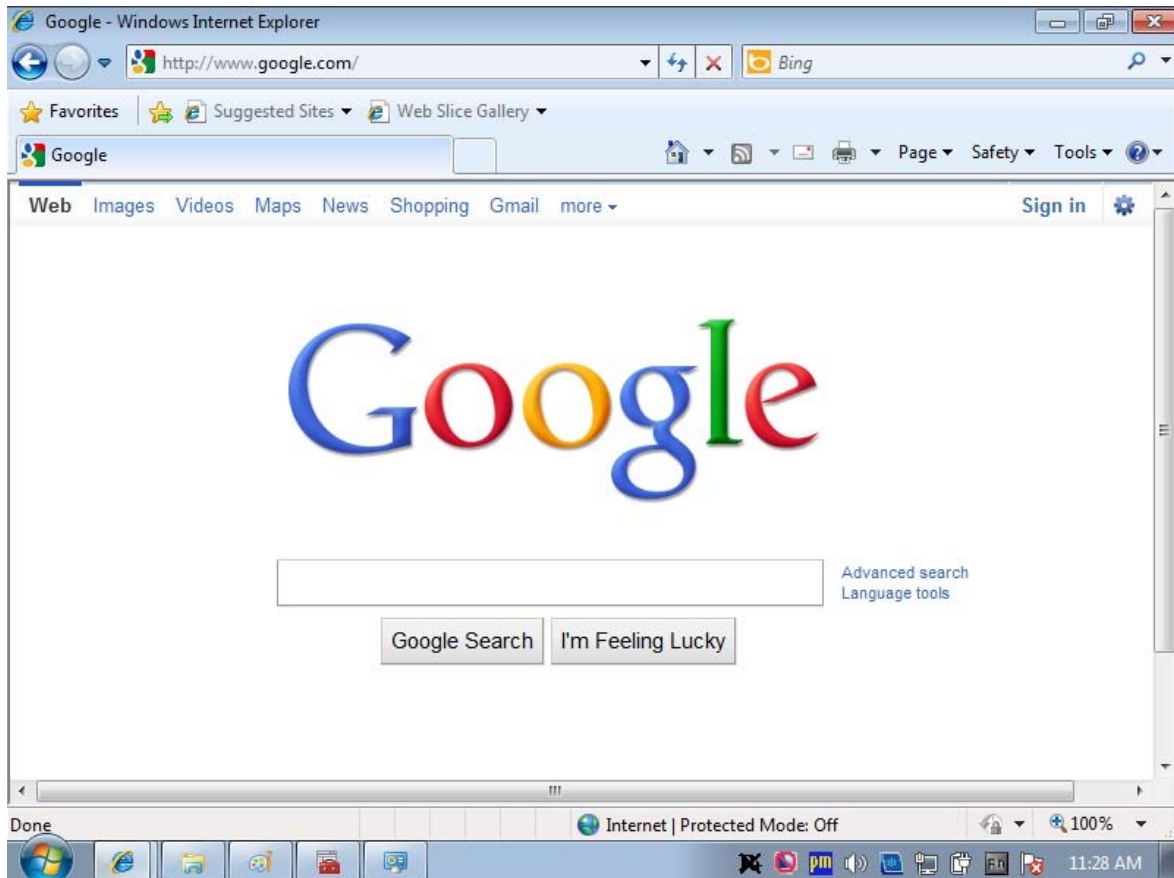
When clicking 'Display Rotate' button, you can also turn the Titan T8 screen with 90 degree angle anti-clock wise.

For example, it changes 800x600 to 600x800..



If you click Display Rotate button again, it goes back to 800x600.

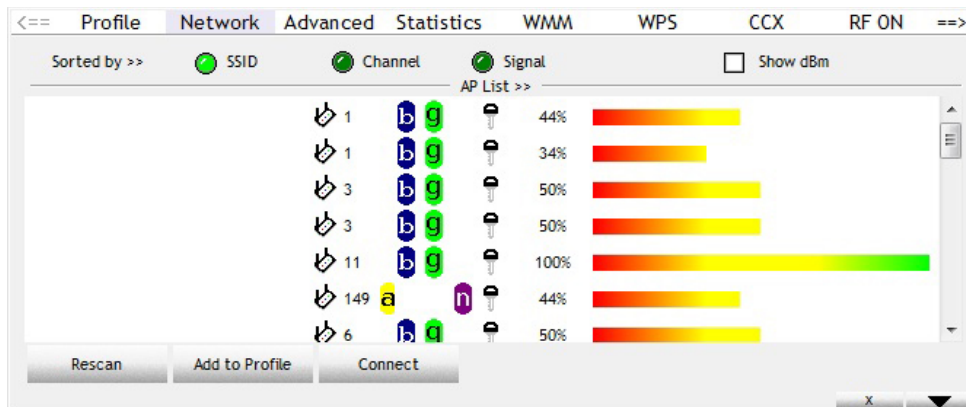
### Internet Explorer



### WiFi Setup



When you click WiFi Setup from Titan Utility, 'Wireless LAN Driver Configuration Program' which is installed in Titan T8 will run.



### Bluetooth Setup



When you click Bluetooth Setup button, 'Bluetooth Driver Setup Program' will run.

\* You need to install Bluetooth program (which works similar to BlueSoleil), because the current Titan T8 doesn't have it installed. \*Bluetooth module is already installed in the Titan T8.

### Seeking Bar (Brightness and sound control)



### Brightness control



Simply use this flower looking button to move left and right. It's located at the bottom of Titan Utility when it pops up.

### Sound Volume Control



Works same as brightness control.

For extra information, and help



#### 'Fn' button on Titan T8

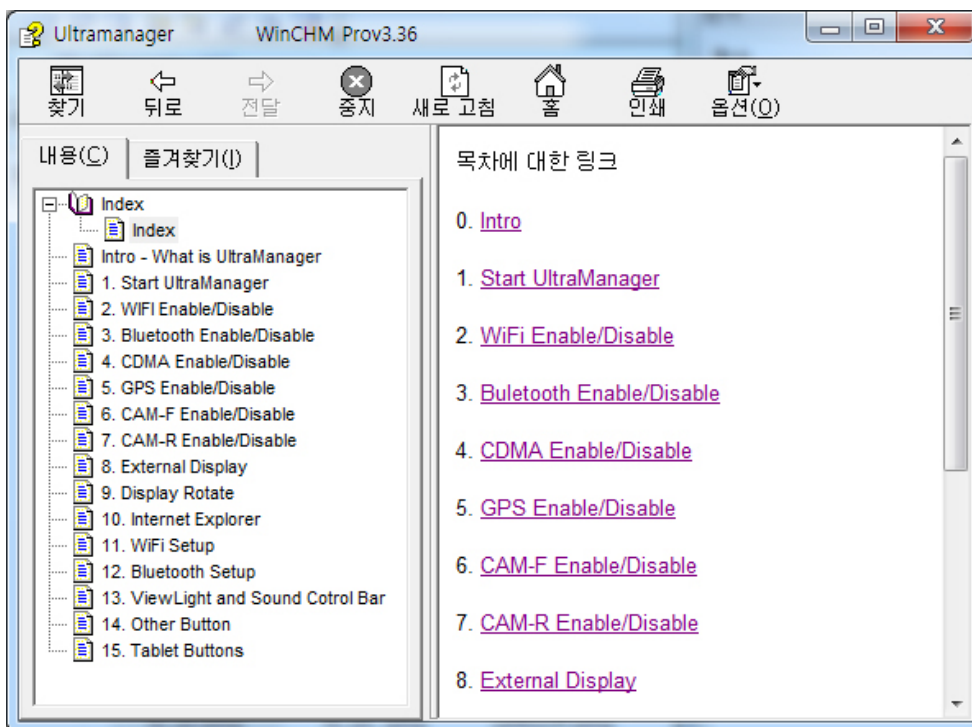
When pressed:

When Un-Pressed:

#### Help Button



Click on it to open the help menu.



#### Configure Touchscreen In Windows Vista / 7

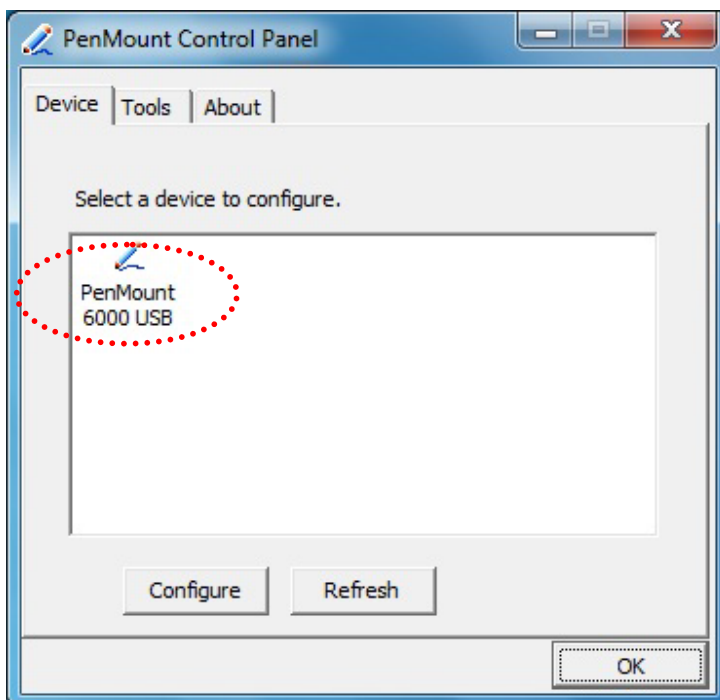
With PenMount Windows Universal V2.2.0.283 and later versions, since the touchscreen is automatically installed as a digitizer device in Windows Vista/7, the functions which are built within Windows Vista / 7 such as rotation, multi-monitors, flicks, and context menu function (which launches a context menu by user's long-pressing on touchscreen rather than clicking the right-mouse button or pressing the application key on the keyboard) will be supported.

To configure touchscreen in Windows Vista / 7:

Double-click on the **PenMount Control Panel** icon on the Desktop.



**PenMount Control Panel** opens. You will be able to see the icon of PenMount 6000 USB under **Device** tab. In **Device** tab, you can see the devices detected on your system. Select a device and press the **Configure** button to configure it.



## Chapter 4

# Power management

#### 4.1 Checking the Battery Level

You can check the remaining battery power in the Windows® battery status indicator located at the lower right-hand corner of the task tray. The Battery status icon only appears in the task tray while the unit is running on the battery power.



Battery Power Indicator

#### 4.2 Monitoring Battery Power

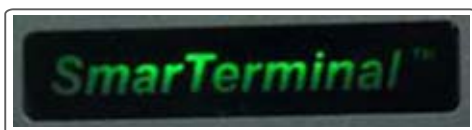
There are four ways to monitor how much power battery has left.

1. Click Start / Settings / Control Panel / Power Options then click Power Meter.



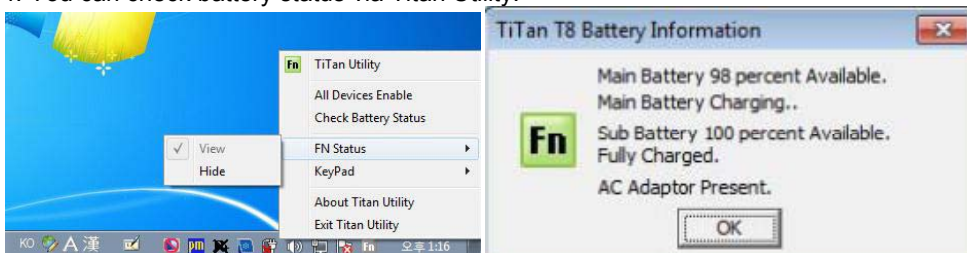
If you do not see the battery icon, enable it in **Start / Settings /Control Panel / Power Options**. Choose the Advanced tab and click "Always show icon on the taskbar."

2. Moving the cursor to the battery icon on the task bar is the simplest way to check on battery power status.
3. You can check for battery status by SmartTerminal Logo LED Color.



Green LED means that fully charged  
 Red LED means that battery charging.  
 Red LED flicker alternately means that low battery less than 10%

4. You can check battery status via Titan Utility.



**Low Battery Alarms**

How your TiTAN T8 responds to a low battery condition is set under **Start / Settings / Control Panel / Power Options / Alarms**.

Two different power alarms can be enabled or disabled: the Low Battery Alarm, and the Critical Battery Alarm.

Warning: When battery power is low, the battery indicator will flash red, and the alarm will display a warning on your screen. Take immediate action, such as saving files or connecting to the AC adapter, or data may be lost.

**Battery Charging**

When you use the AC adapter to connect your TiTAN T8 to a power outlet, the internal battery will automatically begin to recharge. While the battery is charging, the Battery Charge icon on the Indicator panel will be active after 6~12 seconds. When the battery is fully charged, the Battery Charge icon will turn off. If your TiTAN T8 is turned off, a fully discharged battery will take about 3 hours to recharge. If your TiTAN T8 is turned on and is not in suspend mode, it will take about 4~5 hours to recharge the battery. Refer to the following table:

	<b>Charging</b>
<b>System on Under Screen Saver Mode)</b>	<b>4~5 hours</b>
<b>System off ( suspend to RAM)</b>	<b>~4 hours</b>

Note: A fully charged Li-Ion battery can run the TiTAN T8 for approximately 6.0 hours.

**When to Replace the Battery**

Over time, the battery's capacity gradually decreases. We recommend that you replace your battery when you notice that it begins to store significantly less charge.

**Changing the Battery**

Change the main battery pack as follows:

1. Turn off the TiTAN T8.
2. To replace the Battery remove the screw and the Battery Bay Cover.
3. Make sure the replacement battery is properly orientated. Then insert the battery into the battery compartment.

**Power-Saving Tips**

The following are some Power-Saving Tips suggestions to maximize the battery's operating time.

Do not disable Power Management.

Decrease the LCD brightness to the lowest comfortable level.

Shorten the length of time before Windows turn off the display.

USB devices use power just by being connected. If you use a USB mouse, you can save power by disconnecting the mouse and using the optional touch screen pen.

If you use a USB flash drive, unplug it when you are not using it.

If you work with an application that uses a PC card, exit the application when you finish using it.

If you have a PC card installed, remove it when not in use. Some PC cards drain power even while they are inactive.

Deactivate the Wireless LAN function if you are not using it (see Chapter 2).

Deactivate the Bluetooth wireless feature if you are not using it (see Chapter 2)

Turn off the TiTAN T8 PC when you are not using it.



## Chapter 5 Calibration

**PenMount Control Panel**

The functions under **PenMount Control Panel** are:

**Device**

In this tab, you can find out how many devices are detected on your system. Select any device by clicking on its icon.

**Calibrate**

This function offers two ways to calibrate your touchscreen. '**Standard**

**Calibration**' adjusts most touchscreens while '**Advanced Calibration**' adjusts aging touchscreens.

**Standard Calibration** Click this button and arrows appear pointing to red

**Advanced Calibration**

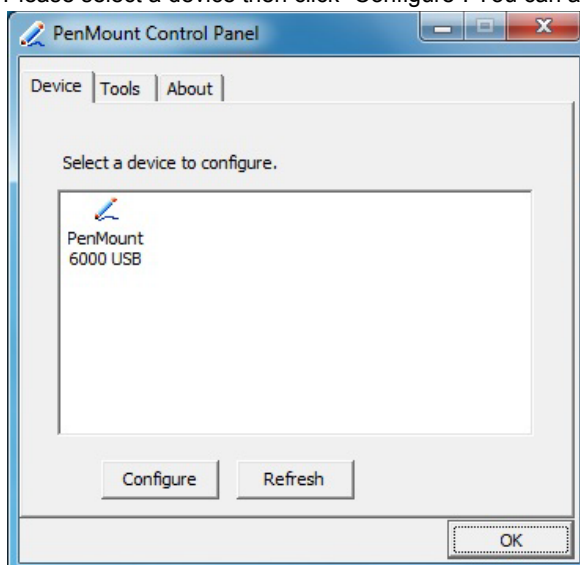
squares. Use your finger or stylus to touch the red squares in sequence. After the fifth red point calibration is complete. To skip, press 'ESC'. Advanced Calibration uses 9, 16 or 25 points to effectively calibrate touch panel linearity of aged touchscreens. Click this button and touch the red squares in sequence with a stylus. To skip, press 'ESC'.

**Command Calibration**

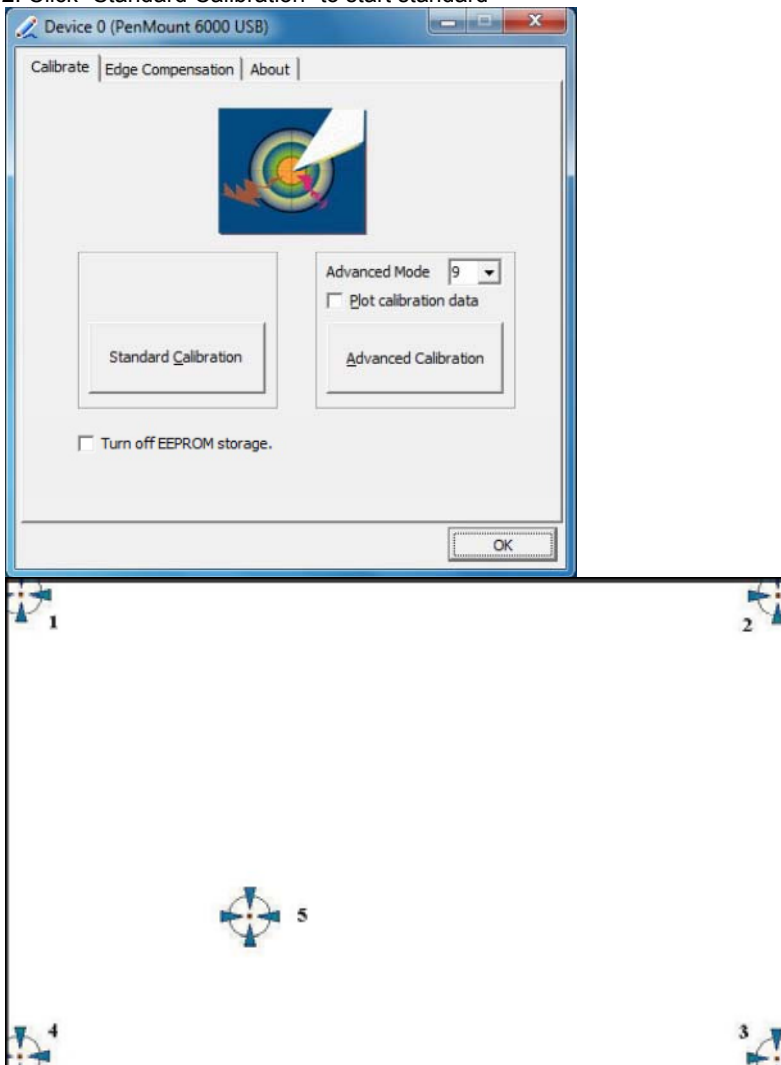
Command call calibration function. Use command mode call calibration function, this can uses Standard, 4, 9, 16 or 25 points to calibrate. E.g. Please run ms-dos prompt or command prompt.  
c:\Program Files\PenMount Universal Driver\DMCCtrl.exe -calibration 0 (Standard Calibration)  
DMCCtrl.exe - calibration (\$)  
0= Standard Calibration  
4=Advanced Calibration 4  
9=Advanced Calibration 9  
16=Advanced Calibration 16  
25=Advanced Calibration 25

To calibrate your touchscreen:

1. Please select a device then click "Configure". You can also double click the device too.

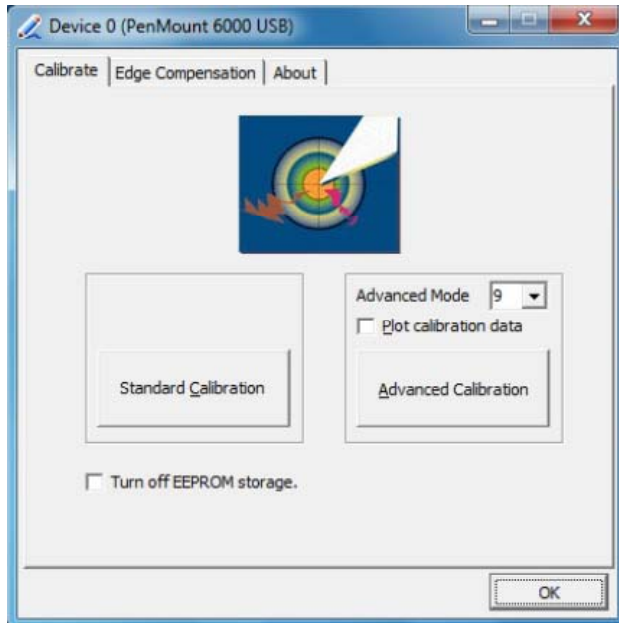


2. Click "Standard Calibration" to start standard

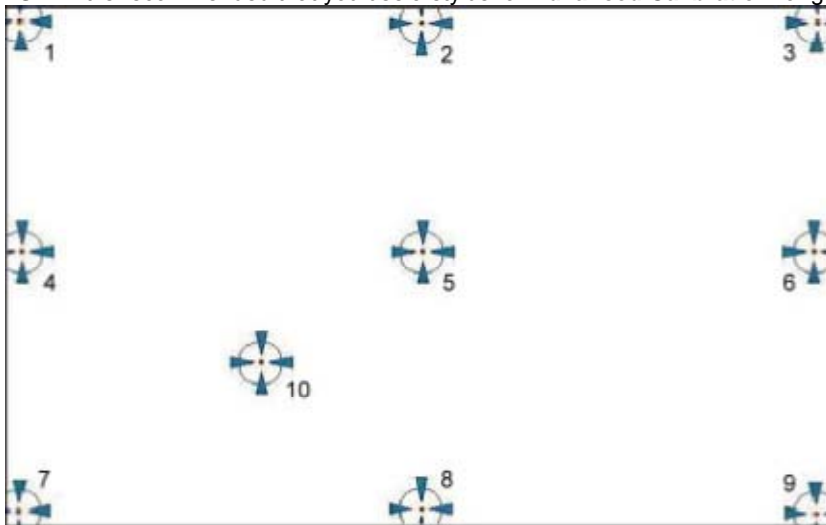


**NOTE:** The older the touchscreen gets, the more **Advanced Mode** calibration points you need for an accurate calibration. Use a stylus for **Advanced Calibration** for greater accuracy. Do the following for **Advanced Calibration**:

2. Back in Calibrate tab, press "**Advanced Calibration**" button to start Advanced Calibration.



**NOTE:** It is recommended that you use a stylus for **Advanced Calibration** for greater accuracy.



#### Plot Calibration Data

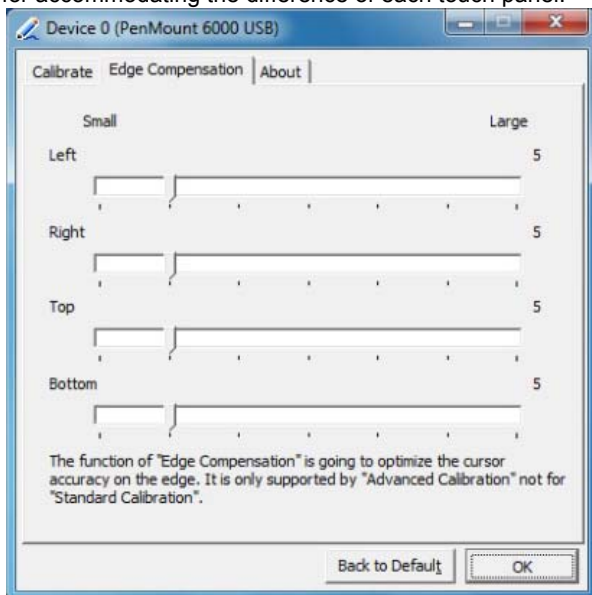
Check this function to have touch panel linearity comparison graph appear when you finish Advanced Calibration. The black lines reflect the ideal linearity assumed by PenMount's application program while the blue lines show the approximate linearity calculated by PenMount's application program as the result of user's execution of Advance Calibration.

#### Turn off EEPROM Storage

This function disables the write-in of calibration data in Controller. This function is enabled by default.

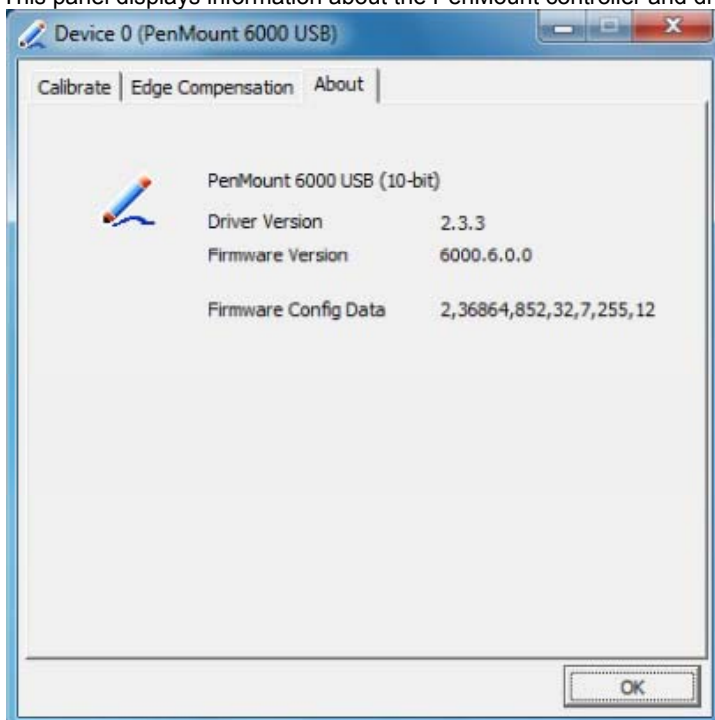
#### Edge Compensation

This page is the edge compensation settings for the advanced calibration. You can adjust the settings from 0 to 30 for accommodating the difference of each touch panel.



#### About

This panel displays information about the PenMount controller and driver version



## Chapter 6

# Trouble shooting guide

### Troubleshooting for Wireless

This chapter provides solutions to problems usually encountered during the installation and operation of the adapter.

**1. Symptom:**

The Wireless adapter is linking, but can't share files with others.

**Possible Remedy:**

Make sure the File and printer-sharing function is enabled.

**2. Symptom:**

Slow or unstable performance.

**Possible Remedy:**

Try to change the channel of the communicating group or move your device closer to the communicating device.

**3. Symptom:**

Can't find the utility icon in the taskbar when plug in the Wireless adapter.

**Possible Remedy:**

You could enable the function by click the icon of Start \_ All Programs \_ Ralink Utility.

**4. Symptom:**

No wireless signal.

**Possible Remedy:**

Move the antennas of the access point or wireless router into an L shape (one vertically, and one horizontally). Click on the Refresh button on the Site Survey screen. If the computer still does not see the Access Point, and then try to move your Access Point closer to the computer. Then click on the Refresh button again. If the computer still does not see the Access Point, move all things that may cause interference with the wireless signal.

**5. Symptom:**

If you still cannot get a wireless connection of the network.

**Possible Remedy:**

- Step 1- Turn the computer off
- Step 2- Turn the Access Point off
- Step 3- Turn the Access Point on
- Step 4- Wait 30 seconds
- Step 5- Turn the computer back on
- Step 6- Using the Utility reconnect to the Access Point:
- Step 7- Double click on the bar graph icon in the system tray
- Step 8- Select the Site Survey Link
- Step 9- Highlight the SSID of your wireless network and click connect
- Step 10- Click OK if all the settings are correct

### Troubleshooting for battery

**Symptom:**

The battery does not charge (Battery Charge indicator does not light green.)

**Possible Remedy:**

Make sure that the AC adapter is properly connected.

Make sure that the battery is not too hot or cold. Allow time for the battery pack to return to room

temperature.

Make sure that the battery pack is installed correctly.

Make sure that the battery terminals are clean.

#### Troubleshooting for Bluetooth problem

##### **Symptom**

I cannot connect to another device with Bluetooth wireless technology.

##### **Possible Remedy:**

Make sure that both devices have activated Bluetooth feature.

Make sure that the distance between the two devices are not over 10 meters or that there are no walls or other obstructions between the devices.

Make sure that the other device is not in "Hidden" mode.

Make sure that both devices are compatible.

#### Troubleshooting for Display Problem

##### **Symptom**

Nothing appears on the screen.

##### **Possible Remedy:**

During operation, the screen may automatically turn off as a result of power management. Press any key to see if the screen comes back.

The brightness level might be too low. Increase brightness by pressing the button.

#### Troubleshooting for Date/Time Problems

##### **Symptom**

The date/time is incorrect.

##### **Possible Remedy:**

Correct the date and time via the operating system or BIOS Setup program.

After you have performed everything as described above and still have the incorrect date and time every time you turn on the TiTAN T8, the RTC (Real-Time Clock) battery is at the end of its life. Call an authorized dealer to replace the RTC battery.

#### Troubleshooting for Sound Problems

##### **Symptom 1**

No sound is produced.

##### **Possible Remedy:**

Make sure that the volume control is not set too low.

Increase volume by pressing the button.

Make sure that the TiTAN T8 is not in Standby mode.

If using an external speaker, make sure that the speaker is properly connected.

##### **Symptom 2**

Distorted sound is produced.

##### **Possible Remedy:**

Make sure that the volume control is not set too high or too low.

In most cases, a high setting can cause the audio electronics to distort the sound.

##### **Symptom 3**



The external audio device does not work.

**Possible Remedy:**

Make sure that your TiTAN T8 is equipped with the driver needed.

Click the speaker symbol on the taskbar and check the Windows volume control.

Check the volume control of your TiTAN T8.

## Chapter 7

### Appendix

### FCC Compliance Statement

This product has been tested and found to comply with the limits for a Class A digital device pursuant to Part 15 of the FCC Rules.

These limits are designed to provide reasonable protection against harmful interference when the equipment is operated in a commercial environment.

This product generates, uses, and can radiate radio frequency energy and, if not installed and used in accordance with the manufacturer's instruction manual, may cause harmful interference with radio communications. Operation of this product in a residential area is likely to cause harmful interference, in which case you will be required to correct the interference at your own expense.

This device complies with Part 15 of the FCC Rules. Operation is subject to the following two conditions:

- 1) This device may not cause harmful interference.
- 2) This device must accept any interference received, including interference that may cause undesired operation.

Notice: The FCC regulations provide that changes or modifications not expressly approved by EMC Corporation could void your authority to operate this equipment.

These limits are designed to provide reasonable protection against harmful interference in a non-residential installation. However, there is no guarantee that interference will not occur in a particular installation. If this equipment does cause harmful interference with radio or television reception, which can be determined by turning the equipment off and on, you are encouraged to try to correct the interference by one or more of the following measures:

- Reorient or relocate the antenna of the radio/television receiver.
- Increase the separation between this equipment and the radio/television receiver.
- Plug the equipment into a different outlet so that the equipment and the radio/television receiver are on different power mains branch circuits.
- Consult a representative of EMC Corporation or an experienced radio/television technician for additional suggestions. For more information about FCC rules and their applicability to the TiTan T8

### IMPORTANT NOTE:

#### FCC RF Radiation Exposure Statement:

This equipment complies with FCC RF radiation exposure limits set forth for an uncontrolled environment. This equipment should be installed and operated with a minimum distance of 20 centimeters between the radiator and your body. This transmitter must not be co-located or operating in conjunction with any other antenna or transmitter.