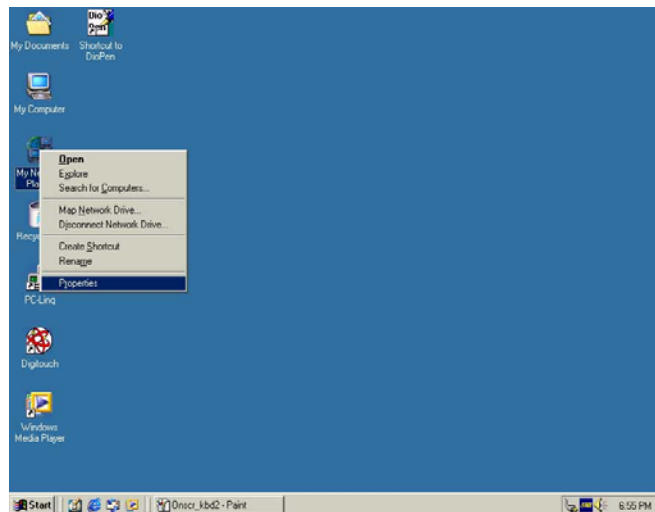
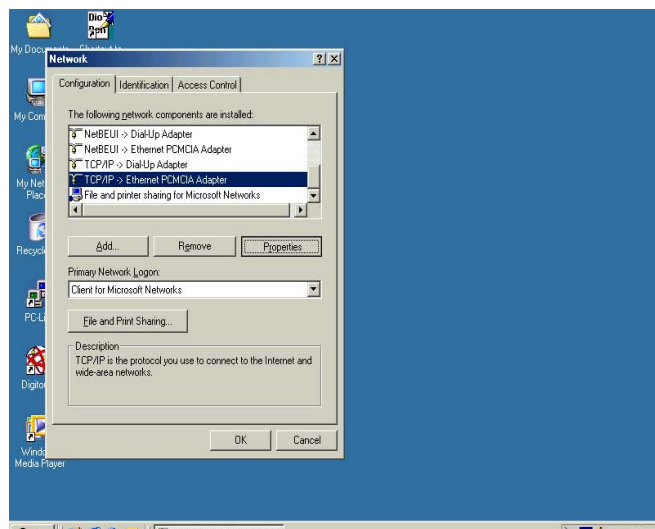


13. Network Setting

- 1) Select “My Network Places” and Press M.Right button.

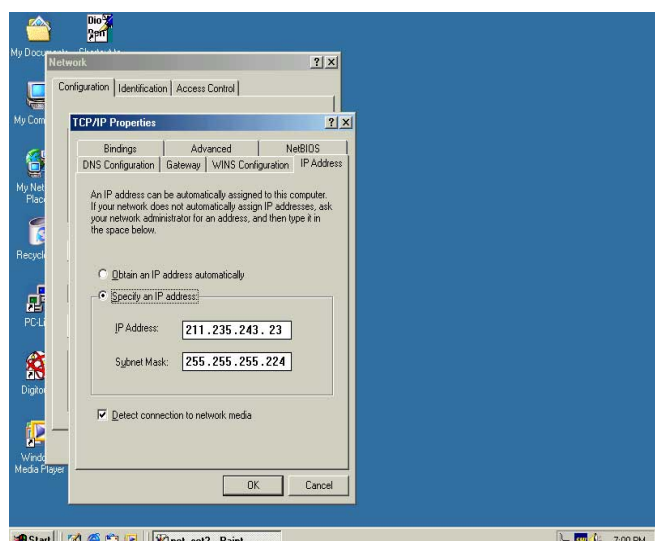


- 2) Select “TCP/IP” and Press button “Properties.”



- 3) Set “IP Address”, “Subnet Mask”, “Gateway”, and “DNS”.

- 4) And then, Restart.



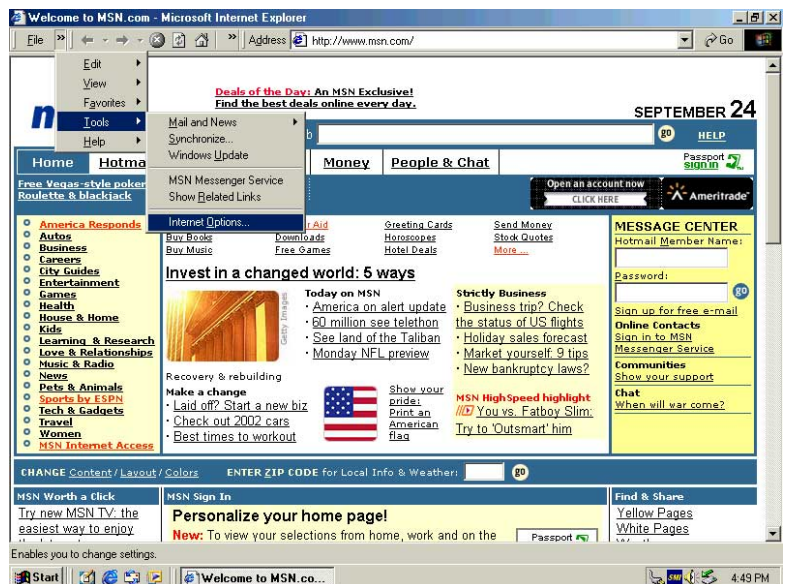
To Remove PCMCIA Card

- 1) Click “Start” button.

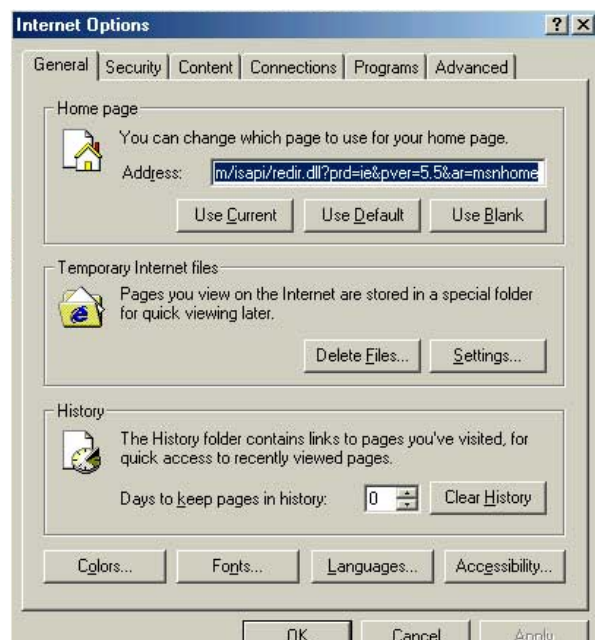
- 2) Select "Settings" in "Start Menu" and click "Control Panel"
- 3) Click "PC Card(PCMCIA)" and Click "Stop" button.

14. To Input URL easily in Windows Internet Explorer

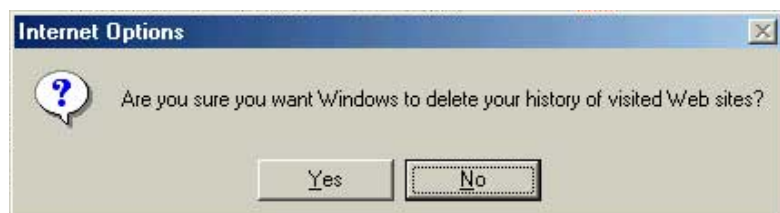
- 1) Select "Tools" and click "Internet Options" in Windows Internet Explorer.



- 2) Set "Days to keep pages in history" to "0" and click "Clear History" button.



- 3) Click "Yes" button.



- 4) Select “Content” and click “AutoComplete” in “Internet Options” Dialog Box.



- 5) Release Check in “Web addresses”, “Forms”, and “User names and passwords on forms”.

- 6) Click “Clear Forms”.

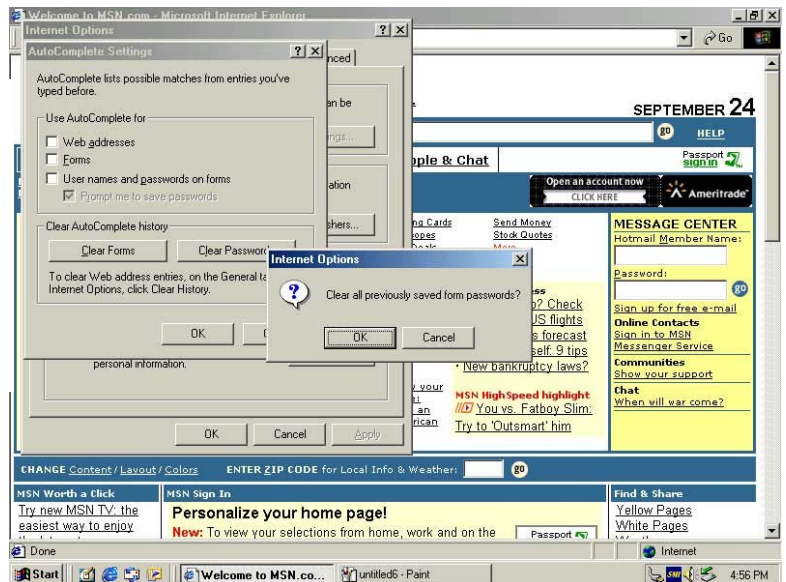


- 7) Click “OK” button.



8) Click “Clear Passwords”.

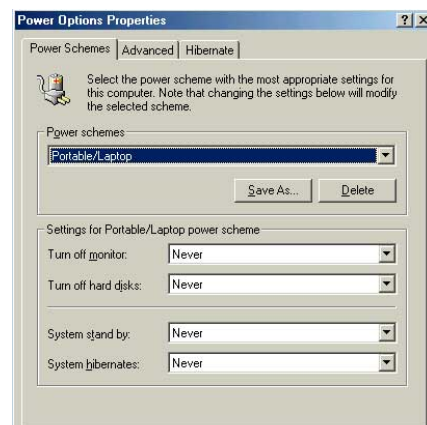
9) Click “OK” button.



15. Hibernation

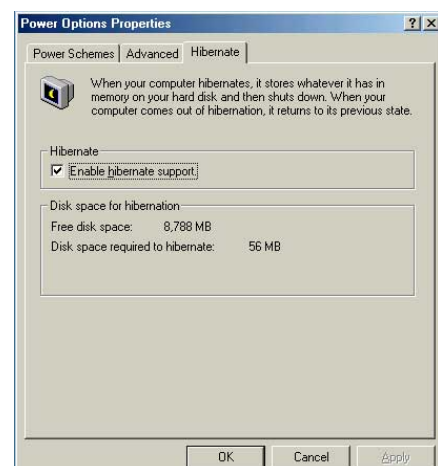
When your computer hibernates, it stores whatever it has in memory on your hard disk and then shuts down. When your computer comes out of hibernation, it returns to its previous state.

1) [Start] -> [Setting] -> [Control Panel] -> [Power Option Properties]



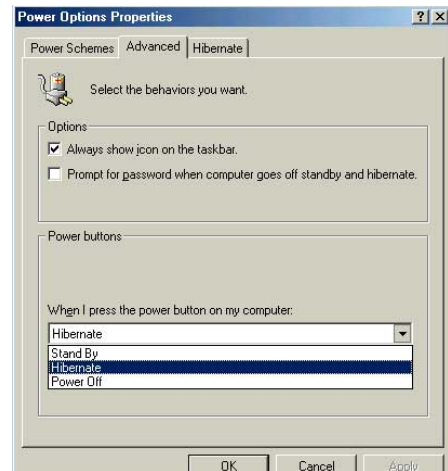
2) Select “Hibernate”.

3) Check “Enable hibernate support”



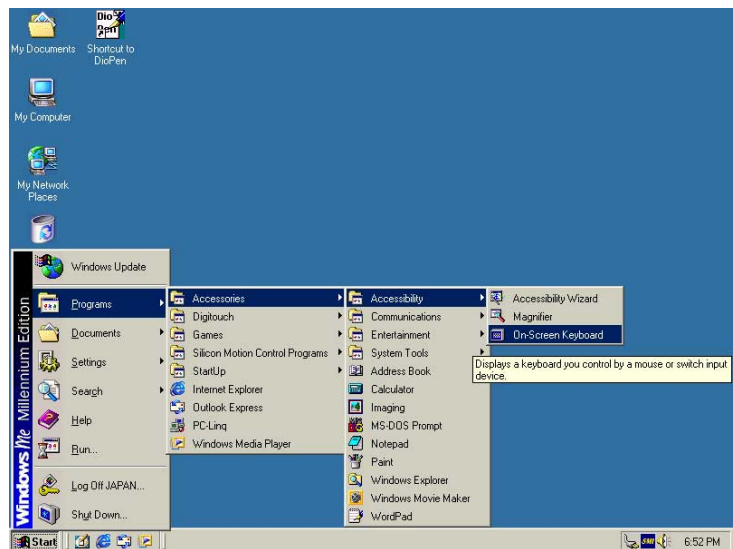
4) Select "Hibernate".

5) Click "OK" button.

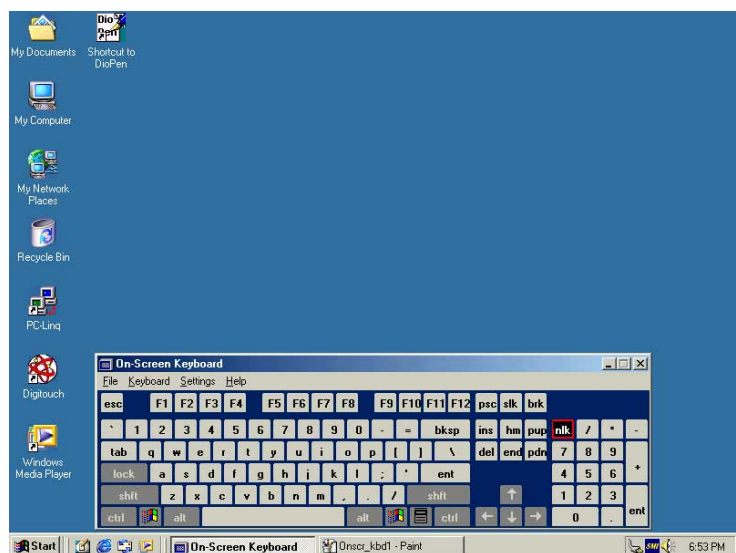


16. To excute OnScreen Keyboard

1) [Start] -> [Accessories] -> [Accessibility] -> [OnScreen Keyboard]



2) Input character to where you want.



Chapter 5. APPLICATIONS OF WIRELESS LAN CARD

1. Wireless network driver installation

2. Access to Wireless network

3. Power Management

1. Wireless network driver installation

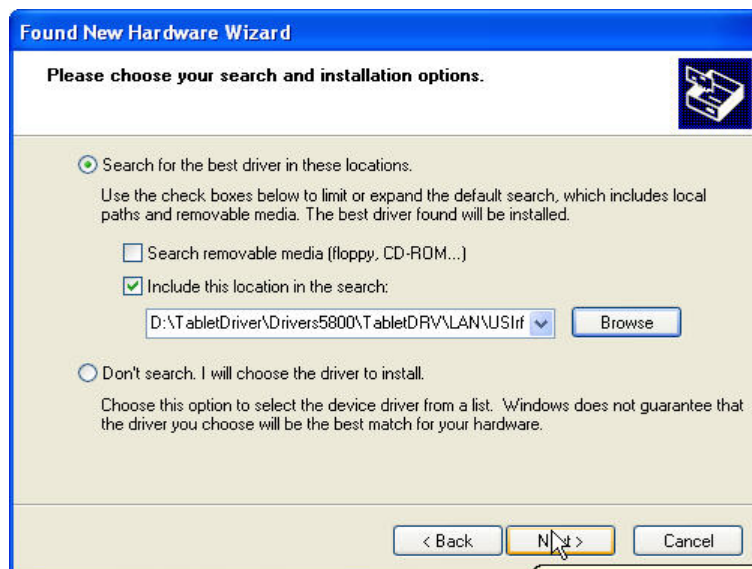
When a network connection is completed, you should install a wireless network driver.

Though the driver is installed when purchased, it needs to be installed when the Window is re-installed.

1) When you start a wireless LAN card-installed computer, **Found New Hardware Wizard** window shows up. Choose **Install from a list or specific location (Advanced)**, and click **Next**.



2) After selecting **Search removable media** or **Include this location in the search**, click **Search**. After selecting a driver location, click **Next**.



3) If **Hardware Installation** window appears, click **Continue** and keep installation going. If **Add/Edit Configuration Profile** window appears after the copy is completed, click **Cancel** to continue the driver installation.

4) When the installation is completed, click **End**.

2. Access to Wireless network

(Access in Windows XP)

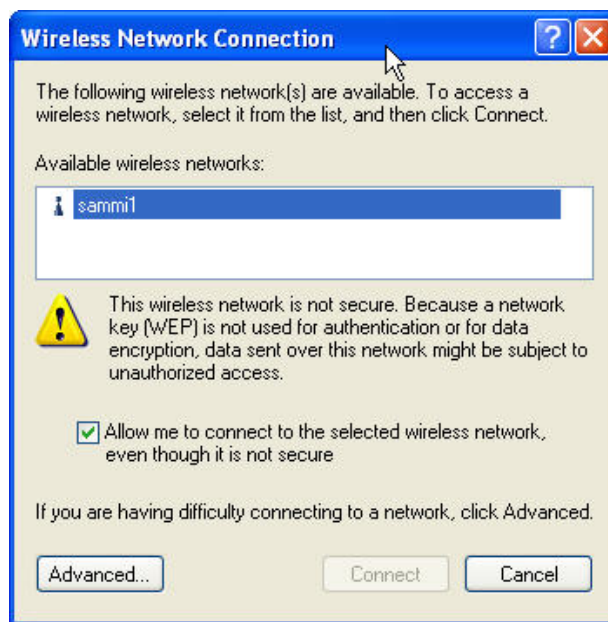
To access a Peer-to-Peer network

You can access the network after completing a network setting in each computer to network.

☐ **Setting up a network condition in one computer between two computers**

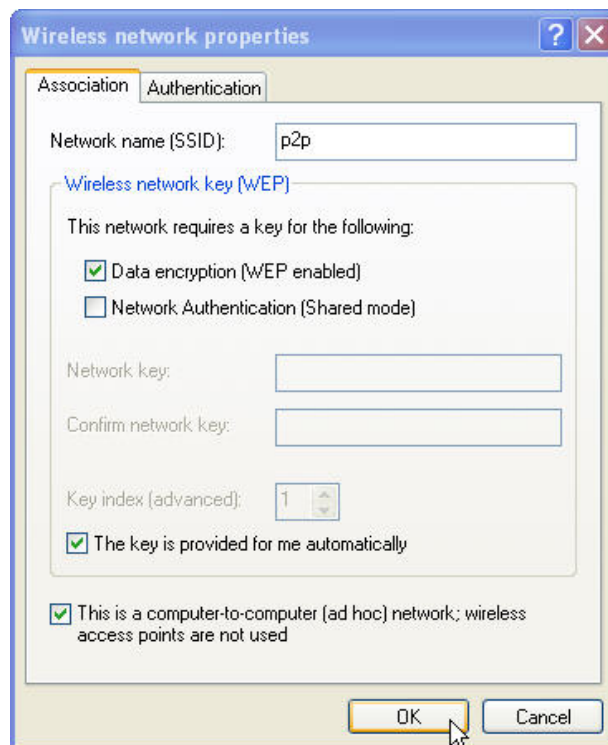
1) When the wireless LAN card driver installation is completed, **Wireless Network Connection** icon shows up in Task Bar. Click the icon with the right button on the touch-pad, and click **Available Wireless Networks** list

2) Click **Advanced**.



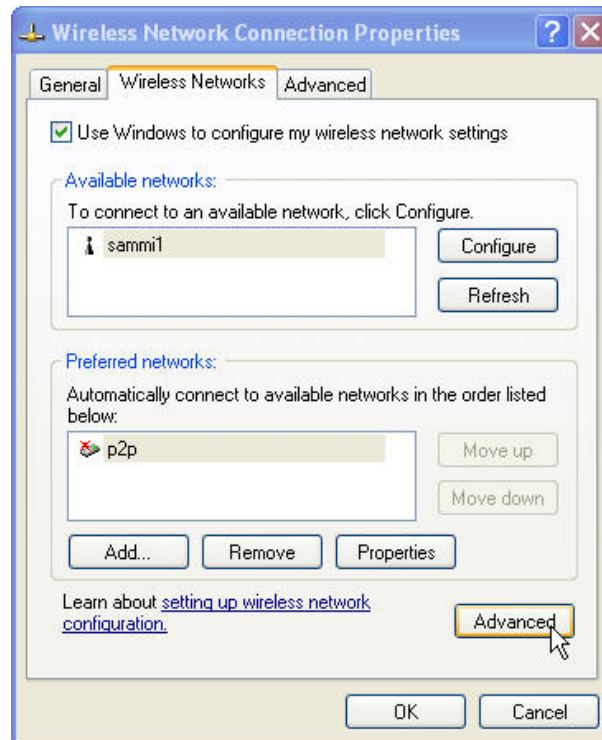
3) Click **Add** in the Standard network setting of the wireless network tab.

4) Select the item **This is a peer-to-peer [ad hoc] network; wireless access points are not used**. After inputting a network name, click **OK**. For example, input a name “p2p” as a network name.



(Caution) The computers to do a wireless peer-to-peer network must be used with the same network name(SSID) to do a wireless network.

5) Check that **p2p** is added in the basic setting network, and then click **Advanced**.



6) In the Advanced window, select the item **Only a peer-to-peer [ad hoc] network** and **Automatically connect to a non-standard network**, and then click Close. A wireless network setting is completed. Now it is available to access a computer-to-computer network.

□ **To access a network in the other computer between two computers**

1) Click the **Wireless Network Connection** icon in Task Bar with the right button of the touch-pad, and then click **Available wireless networks** list.

2) Select a network name (ex: **p2p**) in the available networks, and then click **Connect**. The computer is connected to the other computer that uses the same network name.

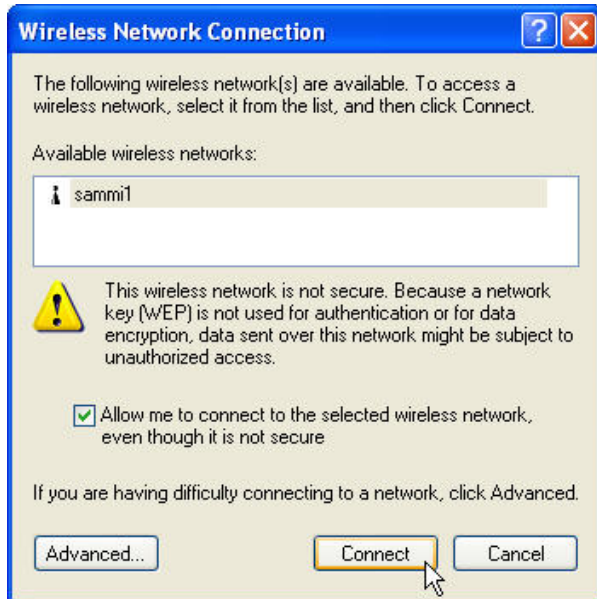
To access a network group connected with AP(Access Point)

You can access it without a condition setting

(Caution) The same way of access is required under the condition of an installed Residential Gateway.

1) After connecting wireless LAN equipment, install a driver. And then, the **Wireless network connection** icon appears in Task Bar. Click the icon with the right button of the touch-pad, and click the list of **available wireless networks**

2) Select a **network name (access point)** you want to access from the list of **available wireless networks**, and then click **Connect**. After a while, it is connected to an AP-connected network group.



(Caution) To check out the network access status,

drag the mouse to the wireless network connection icon on Task Bar. Then, the access status appears. If encryption is set to the AP you want to access select the network name under encryption. Then a network key can be activated. If you input a network key to the selected AP, it is available to use a wireless network securely. Consult a person in charge of wireless network management for a network key to AP. (Setting up an AP encryption is managed by an AP management program)

(To access a network in other OS tablet PCs)

In order to use a wireless LAN card in other OS s except Windows XP, install a wireless LAN Client manager program, and then set up a network condition.

Wireless LAN Client Manager Program Installation

1) After clicking **Start>Run**, click **Search** , and select a program location. Click **Confirm**.

2) Complete the installation according to the guide of the screen.

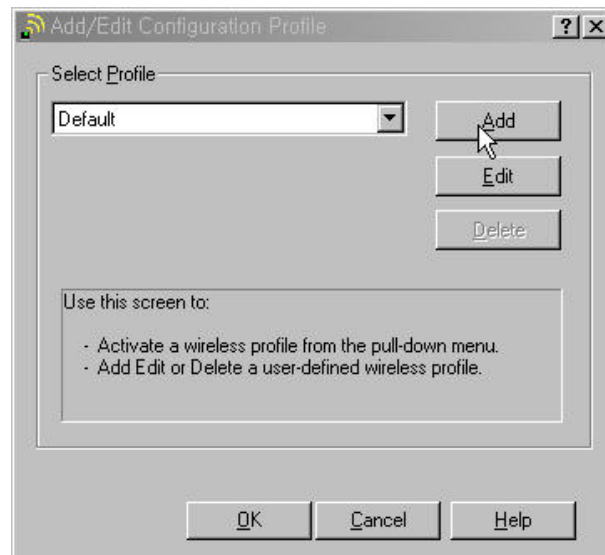
Setting up a network condition

1) Click the **Client manager** icon on Task Bar to run a manager program.

(Click **Start > Program > Wireless > Client Manager.**)

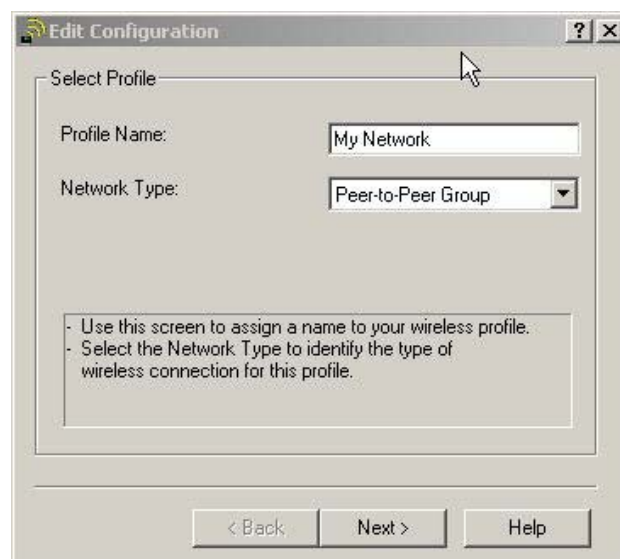
2) In the menu of **Actions**, select **Add/Edit Configuration Profile** item, and then click **Add**

3) In the window of **Add/Edit Configuration Profile** item, click **Add**.

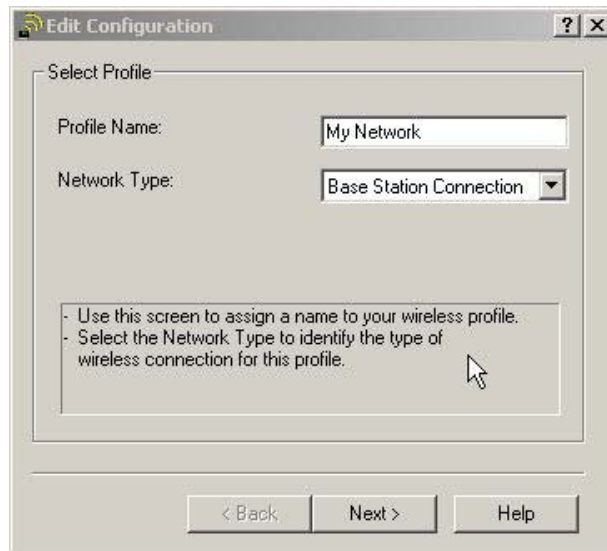


4) In Network Type item, choose a type of wireless networks you will use. Click **Next**.

➔ To access a computer-to-computer network, select Network type as **PTP(Peer-to-Peer) Group**, and input a network name to use in Profile Name item. For example, input **My Network** in Profile name, and click **Next**.



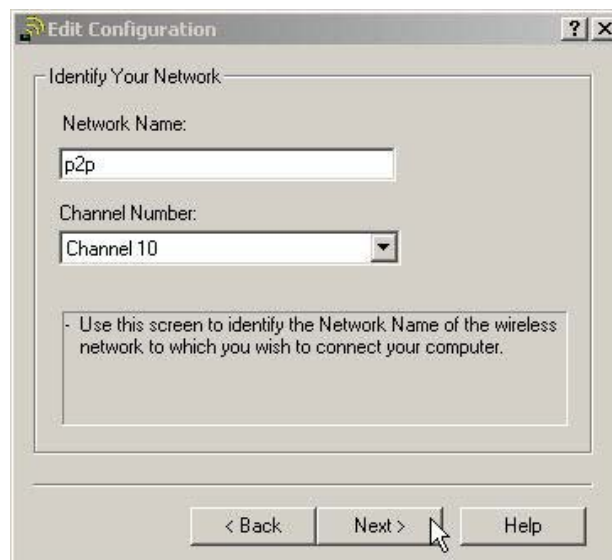
➔ To access an AP(Access Point)-connected network group, select **Base station connection** in Network Type, and click **Next**.



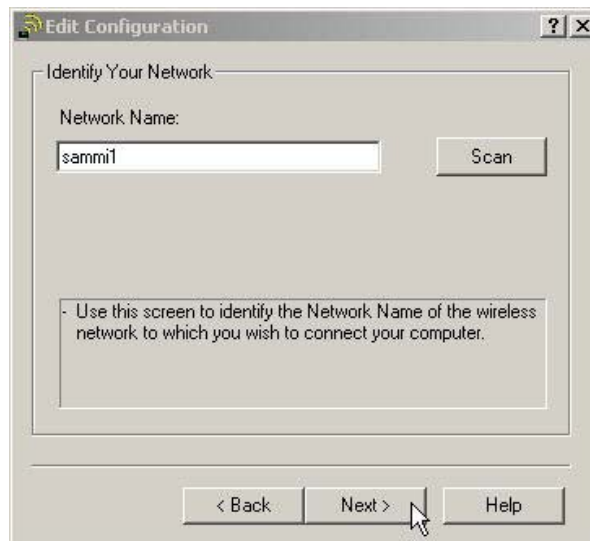
(For reference) **To access a Residential Gateway network, select *Working as Base station* in Network Type.**

5) Input an available network name in Network Name item, and click **Next**

➔ **To access a computer-to-computer network, input a network name (p2p) in Network Name, and select a channel you will use. Click **Next**.**



➔ **To access an AP (Access Point)-connected network group, input a network name in Network Name item, and then click **Next**.**



(For reference) **In case of not knowing an AP network name of a wireless LAN**, push **Scan** button. Search Available Access Points, and select one of the lists. When you click **OK**, the name you chose is added.

(Consult your network manager for an accurate name of a wireless network.)

6) If you want to set up a security key, select **Enable Data Security**, and click **Next**.

(For reference) **It is recommended to set up a security key.**

A security key should use the same key value with a computer or an AP on a network. (Consult your network manager for setting up an AP security key value.)

7) Choose **Off** to use basic power at its maximum, or choose **On** to use basic power at its minimum, and click **Next**.

(For reference) *This item does not show up when you access a Peer-to-Peer Group.*

8) When you renew a new IP as setting up, choose the item **IP Address** when selecting this **profile**, and click **End**. When you use the basic setting, click **End**.

9) Click **OK** in the window Add/Edit Configuration Profile. The setting is completed.

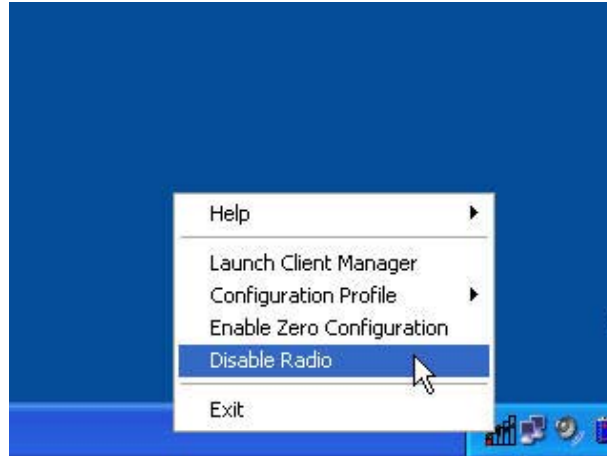
3. Power Management

In case of a tablet PC, it is advisable to minimize the use of batteries because it is a portable PC. So, it is recommended to change the wireless LAN card into "not to use"

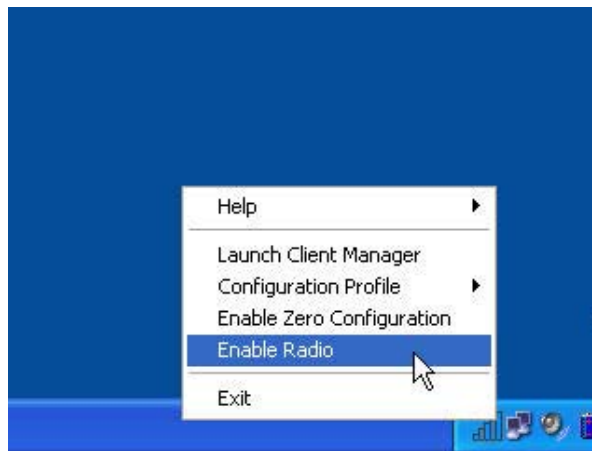
when you do not use a wireless LAN. The way to change the mode is as follows.

1) Click the right button of the mouse on the **Client Manager** () icon on the Task Bar, and make a pop-up window act.

2) Click **Disable Radio** on the pop-up window to save power..



3) On the contrary, click **Enable Radio** to use a wireless network again.



Chapter 6. APPLICATIONS OF BLUETOOTH

1. Before using Bluetooth

2. Bluetooth Applications

1. Before using Bluetooth

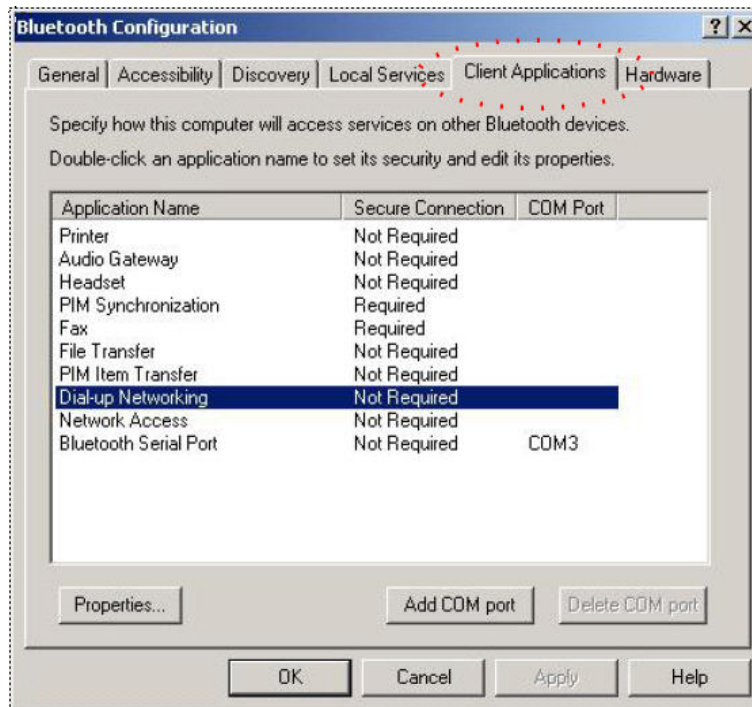
“ Bluetooth ” is one of Wireless Technologies. The aim of Bluetooth technology is tended to a low cost, low power, and short-range radio product. The idea to develop Bluetooth is for replacing physical cable connection in amount of mobile or portable devices.

Any two Bluetooth devices made as a Master-Slave structure creates a Bluetooth piconet network. A single Bluetooth piconet has one Master and at most seven active Slaves. The Bluetooth connection is only established between the Master and a Slave in a single piconet. Any two Slaves in a single piconet cannot create a Bluetooth connection.

2. Bluetooth Applications

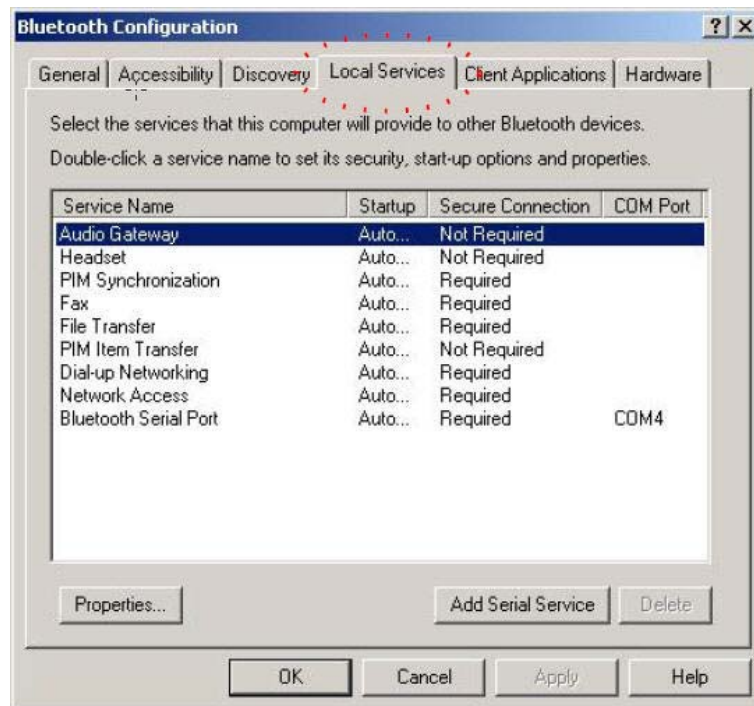
1) Bluetooth Applications (Client Applications)

This functionality is to allow this computer to access to a remote Bluetooth device for any services that the remote Bluetooth device is provided for. The service configuration setting is located on Client Application tab.



2) Bluetooth Services (Local Services)

This functionality is basically to configure this computer to support Bluetooth service to remote Bluetooth devices. The Bluetooth services of this computer provided are Audio Gateway, Dial-up Network, Fax, Headset, Network Access, Personal Information Management Exchange, Personal Information Management Synchronization, File Transfer, and Serial Port Profile. The service configuration setting is located on Local Services tab.






























3) Bluetooth Icon

The Bluetooth icon in the Windows system tray provides at-a-glance feedback about Bluetooth status

Bluetooth Icon Indicates Bluetooth Status		
Enabled	Disabled	Connected
		

4) Device Icons

These icons show the status of Bluetooth device connection.

Name	Normal	Connected	Paired
Audio Gateway			
Desktop			
Headset			
Laptop			
Modem			
Network Access Point			
Personal Digital Assistant			
Printer			
Telephone			
Unknown	