

Industrial Tablet

SmartTablet



User's Manual

SAMMI Information Systems Co., Ltd.

FCC (Federal communication commission)

This device was tested for typical body-worn operations. The antenna(s) used for this transmitter must not be co-located or operating in conjunction with any other antenna or transmitter. To comply with FCC RF exposure requirements third-party belt-clips, holsters, and similar accessories used by this device should not contain any metallic components. Body worn accessories that do not meet these requirements may not comply with FCC RF exposure requirements and should be avoided. The FCC had granted an Equipment Authorization for this model device with all reported SAR levels evaluated as in compliance with the FCC RF exposure guidelines.

This equipment has been tested and found to comply with the limits for a Class B digital device, pursuant to part 15 of the FCC Rules. These limits are designed to provide reasonable protection against harmful interference in a residential installation. This equipment generates, uses and can radiate radio frequency energy and, if not installed and used in accordance with the instructions, may cause harmful interference to radio communications. However, there is no guarantee that interference will not occur in a particular installation. If this equipment does cause harmful interference to radio or television reception, which can be determined by turning the equipment off and on, the user is encouraged to try to correct the interference by one or more of the following measures:

Reorient or relocate the receiving antenna.

Increase the separation between the equipment and receiver.

Connect the equipment into an outlet on a circuit different from that to which the receiver is connected.

Consult the dealer or an experienced radio/TV technician for help.

This equipment is FCC Class B product and it complies with FCC Part 15 standard. This equipment must be installed and operated in accordance with provided instructions. End-users and installers must be provided with antenna installation instructions and transmitter operating conditions for satisfying RF exposure compliance.

CONTENTS:

- ✓ SmartTablet Web Pad.
- ✓ Stylus Pen.
- ✓ Protective Cover.(**Applicable to the case of Mass Production**).

- ✓ AC/DC Adaptor/Battery Charger.
- ✓ Lithium-Ion Rechargeable Battery Pack
- ✓ User's Manuals.

DECLARATION OF CONFORMITY

Per FCC Part 2 Section 2. 1077(a)

hereby declares that the product

Product Name: Industrial Tablet PC

Model Number: Smart Tablet

Conforms to the following specifications:

FCC Part 15, Subpart B, Section 15.107(a) and Section 15.109(a),
Class B Digital Device

Supplementary Information:

This device complies with part 15 of the FCC Rules. Operation is subject to the following two conditions: (1) This device may not cause harmful interference, and (2) this device must accept any interference received, including interference that may cause undesired operation.

Any changes or modifications not expressly approved by the party responsible for compliance could void the authority to operate equipment.

THINGS TO BE CAREFUL:

- ✓ Do not disassemble SmartTablet at any time.
- ✓ Do not use AC/DC adapter/battery charger other than the one with the package.
- ✓ Keep away from any object with magnetic field.
- ✓ Keep away from the fire flame.
- ✓ Do not leave SmartTablet exposed to direct sunlight.
- ✓ Keep battery separately if SmartTablet is not in use for a long period time.
- ✓ Do not touch the screen with any sharp object.
- ✓ Connect the USB Camera only to the USB port on the top of SmartTablet. Do not use the USB port on the right side of SmartTablet for camera at any time.
- ✓ Always save the files into HDD and back them up occasionally to the safe place.
- ✓ USB port on the right side of SmartTablet can be used for USB interfaced devices such as USB keyboard, USB mouse, USB FDD, USB Smart Cable, USB CD-ROM and etc.

(Note that USB CD-ROM needs to have its own power supply)

In case of problem and for any other inquiry, please contact below personnel:

E-mail: <mailto:support@sammicomputer.co.kr>

Phone: 82-2-790-5505

CONTENTS

Chapter 1. APPEARANCE

Chapter 2. KEY FUNCTIONS

Chapter 3. SETTING UP SmartTablet HARDWARES

1. Installing the battery pack .
2. Connecting to the power.
3. Charging Time.
4. Handle the Battery Pack With Cautions.

Chapter 4. USING AND SETTING SmartTablet

1. Power on.
2. Power off.
3. Rotate Button Setting.
4. Media Player 6.4 Setting.
5. Display setting
6. Touch Screen.
7. One Touch Setting
8. Stylus Pen.
9. Installing PCMCIA Card.
10. Connecting Monitor.
11. Master Volume Setting
12. PS/2 Device
13. Network Setting
14. To Input URL easily in Windows Internet Explorer for Windows ME
15. Hibernation
16. To execute OnScreen Keyboard

Chapter 5. APPLICATIONS OF WIRELESS LAN CARD

1. Wireless network driver installation
2. Access to Wireless network

3. Power Management

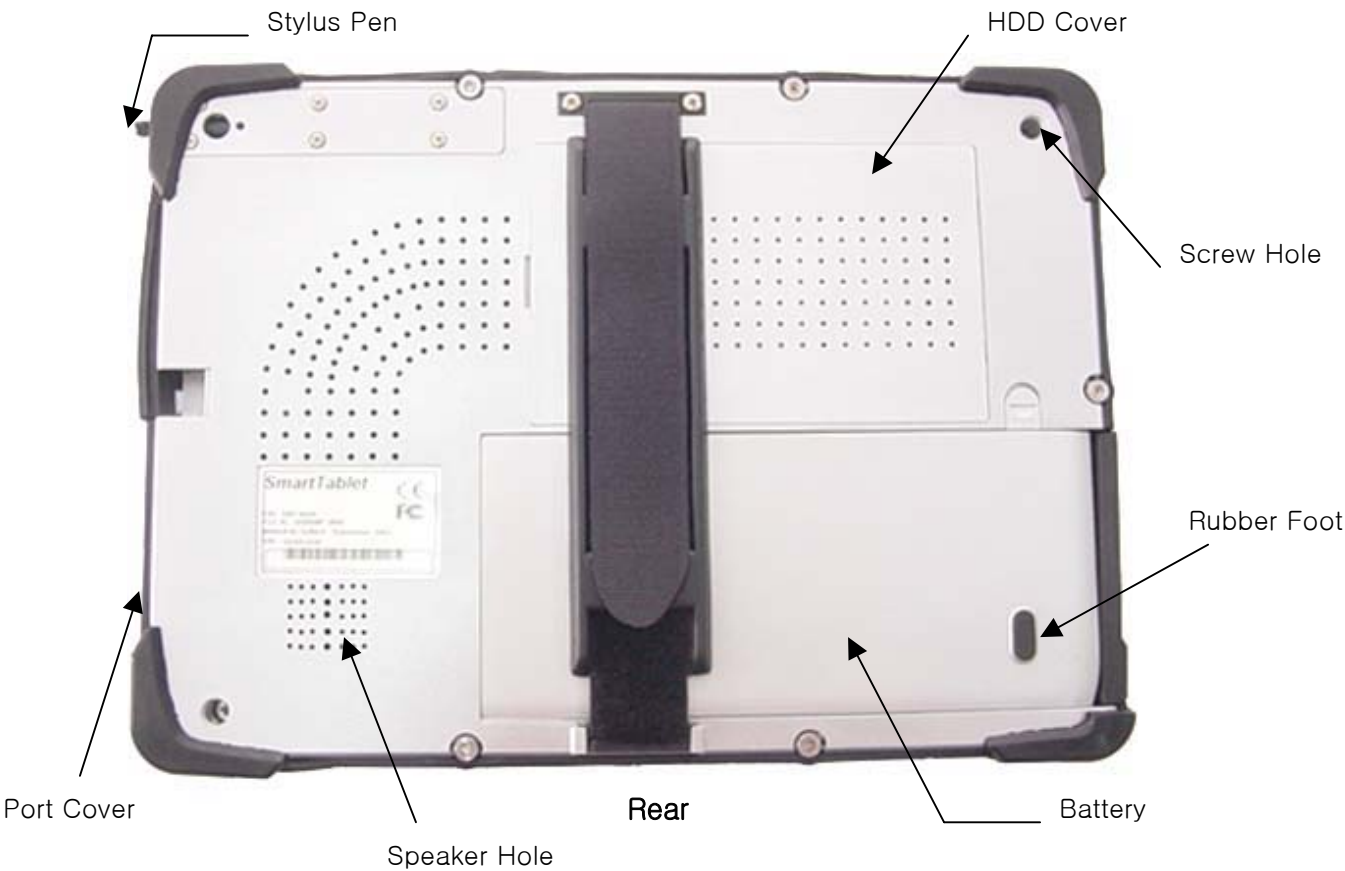
Chapter 6. APPLICATIONS OF BLUETOOTH

- 1. Before using Bluetooth**
- 2. Bluetooth Applications**

Chapter 1. APPEARANCE



Front

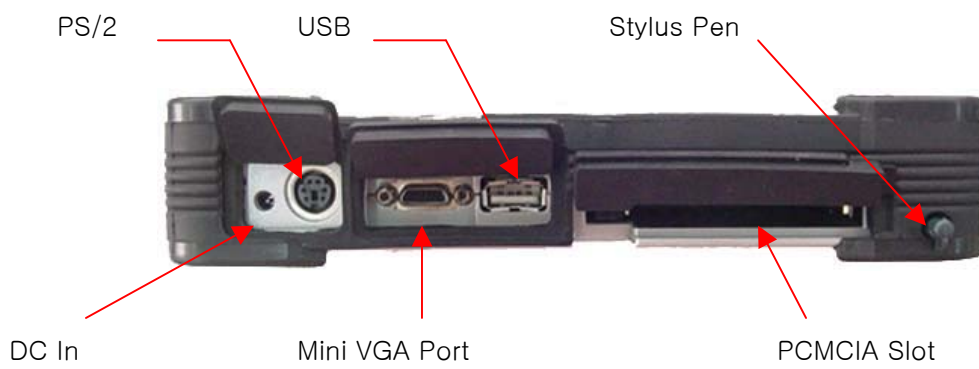




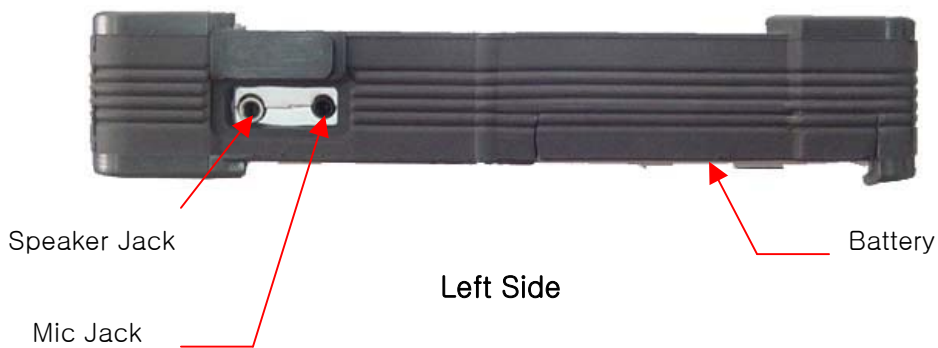
Top USB



Bottom



Right Side



Left Side

Chapter 2. KEY FUNCTIONS:

This chapter describes key-button operation.



1	Alt	2	Arrow	3	Ctrl	4	Rotate
5	Battery LED	6	Power key	7	GPS (Keyboard Key)	8	Esc
9	Tab	10	Enter	11	Mic		

1. Alt Key.

Works as Alt key of the keyboard in Windows mode.

2. Arrow Keys.

Work as Arrow Keys of the keyboard in Windows mode.

3. Ctrl Key.

Works as Ctrl Keys of in the keyboard in Windows mode.

4. Rotate Key.

Rotates the whole screen 90 degrees.

5. Battery LED.

In charging(Power On) : Red light - On

In charging(Power Off) : Red light – **Blinking**

Request to charge(Power On) : Red light

Fully Charged (Power On): Green light – On

Fully Charged (Power Off): Light off

6. Power Key.

Powers SmartTablet on and off. Hibernate mode function can be added by changing the Windows' setting. However, with standby mode activated and when the power is on, SmartTablet can be forced to power off by pressing and holding this key down or it will go into Hibernate by pressing this key once. By pressing this key once again, SmartTablet will be out of Hibernate mode.

7. GPS (Keyboard Key)

Toggles to hide or show the Soft Keyboard window once the software is running.

8. Esc Key.

Works as Esc Key of the keyboard in Windows mode.

9. Tab Key.

Works as Tab Key of the keyboard in Windows mode.

10 . Enter Key.

Works as Enter Key of the keyboard in Windows mode.

11. Mic.

Microphone

*** Combination Keys. ***

-

- Functions when ALT key and another key (other than ALT key) are pressed together in Windows Mode.

- **ALT** + **RIGHT ARROW** => SPEAKER VOLUME UP
- **ALT** + **LEFT ARROW** => SPEAKER VOLUME DOWN
- **ALT** + **UP ARROW** => BRIGHT UP LCD PANEL

- **ALT** + **DOWN ARROW** => BRIGHT DOWN LCD PANEL
- **ALT** + **Ctrl** + **KBD** => SYSTEM RESET
- **ALT** + **ROTATE** => NUMBER KEY(TOGGLE)
- **ALT** + **KBD** => INPUT ID(In the Future)
- **ALT** + **ESC** => ACTIVATED WINDOW CLOSE OR SYSTEM RESET
- **ALT** + **TAB** => ACTIVATED WINDOW CONVERSION
- **ALT** + **ENTER** => WHOLE SCREEN DISPLAY AT WINDOWS MEDIA PLAYER
- **Ctrl** + **TAB** => ACTIVATED CALIBRATION MODE TO CALIBRATE TOUCH PANEL

Chapter 3. SETTING UP SmartTablet HARDWARES:

1. Installing the battery pack to SmartTablet.

The rechargeable battery is packed separately from SmartTablet and should be slide in very carefully to the bottom of SmartTablet. The battery should be fully charged before using it for the first time.

2. Connecting to the power.

- Connect AC/DC adapter/battery charger to the power port located on the right side of SmartTablet.
- Connect AC/DC adapter/battery charger to the power receptacle.
- Green LED light will be shown on the AC/DC adapter indicating the battery is being fully charged.

3. Charging Time.

It will take about 3 hours for the battery to be fully charged.

4.Handle The Battery Pack With Cautions.

- Only use the AC adapter that comes with SmartTablet.
- If the battery is not used for long period of time, totally drain the battery out.
- If the temperature of the battery pack goes higher than 60°C, remove the pack and let it cool down in room temperature before using it again.
- Do not leave the battery pack exposed direct sunlight or heated up.
- Do not disassemble the battery pack.
- Do not drop the battery pack or give physical shock.
- Do not let children play with the battery.

Chapter 4. USING AND SETTING SmartTablet.

1. Power on.

After battery pack is fully charged, press the Power Key. The green Power LED light will be on indicating the power is on.

2. Power off.

There are two ways of powering SmartTablet off.

1. Shut down the system from Windows.

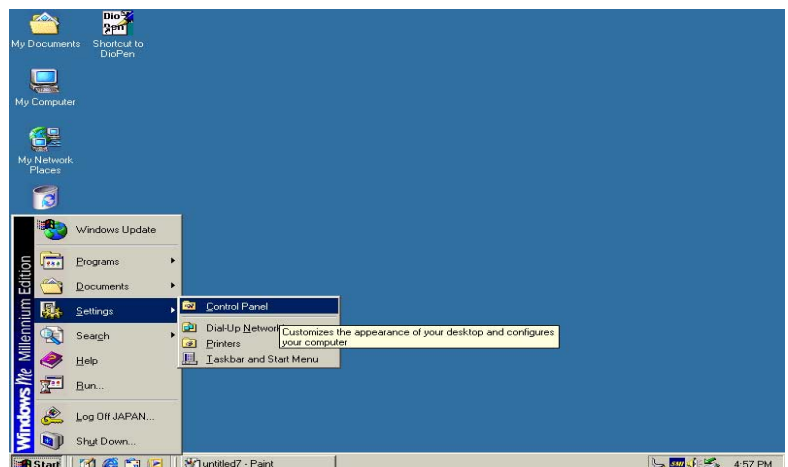
- Select Start from Taskbar -> Select Shut Down from Start menu.
- Check Shut Down from Shut Down Windows menu -> Select OK.

2. Changing the function of Power Key.

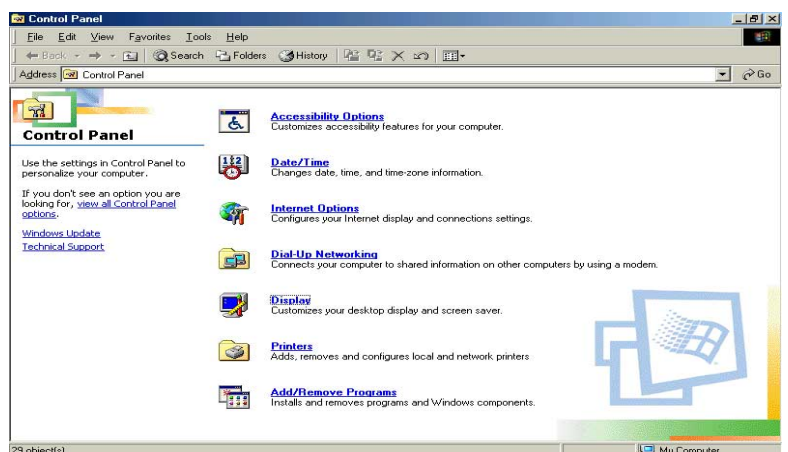
- Select Start from Taskbar-> Select Settings -> Select Control Panel.
- Select Power Management Icon from Control Panel.
- Select Advanced tab -> Reconfigure Power Buttons setting -> Select Apply.

3. Rotate Button Setting

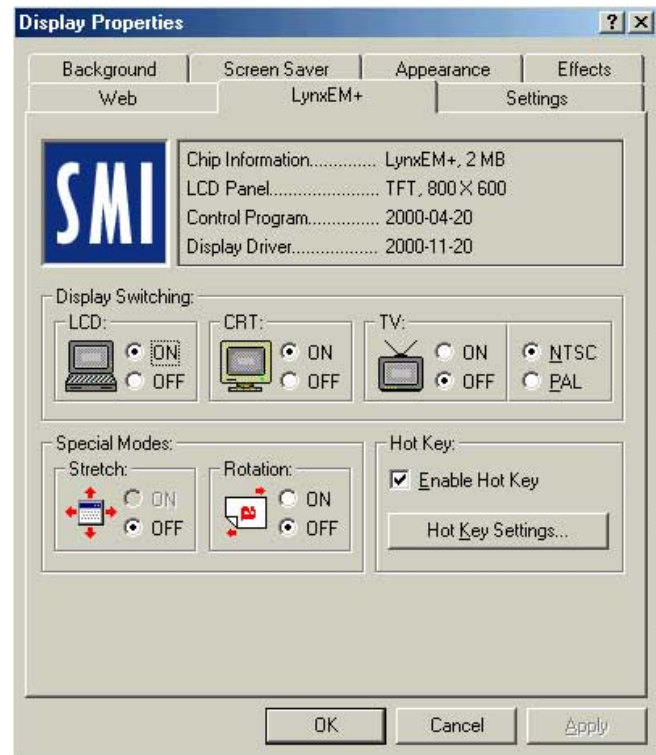
- 1) Select “Settings” in “Start Menu” and click “Control Panel”



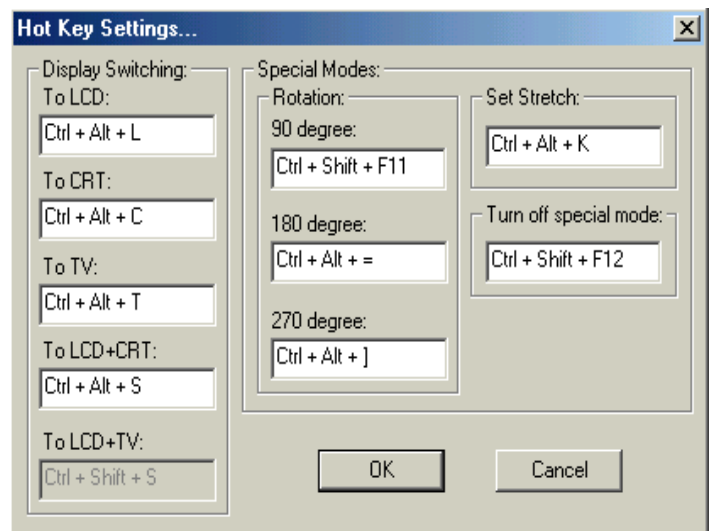
- 2) Click “Display” icon.



- 3) Select “Lynx3DM+”, and Press
“Hot Key Settings” button.



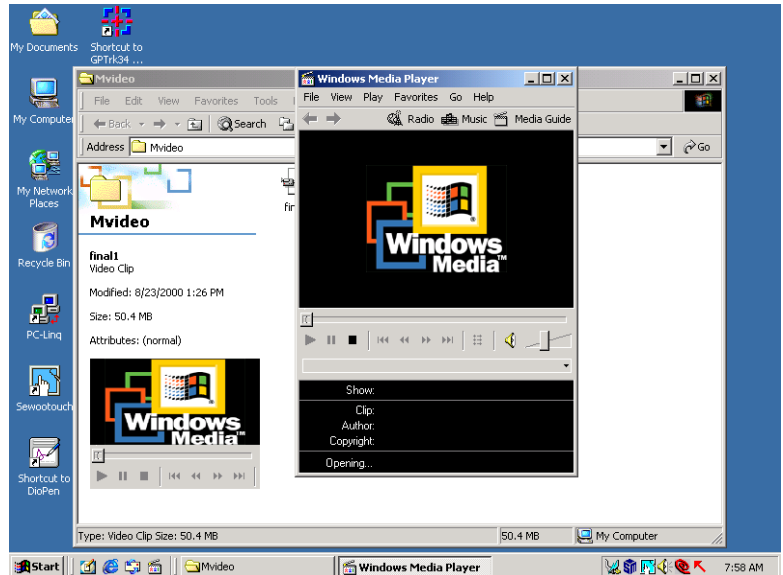
- 4) Setting “90 degree” to “Ctrl + Shift + F11” and “Turn off special mode” to “Ctrl + Shift + F12”, and then click
“OK” button.



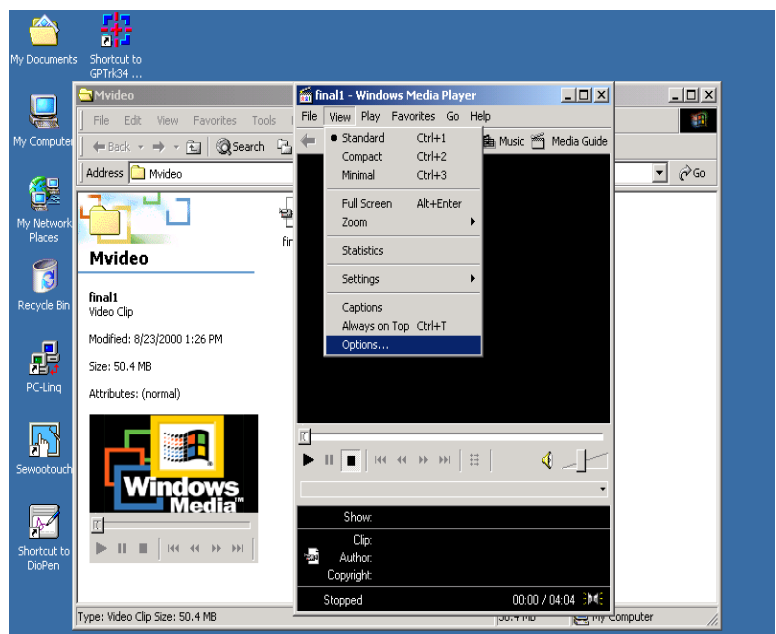
4. Media Player 6.4 Setting.

To see high quality movie, Windows Media Player 6.4 is better than Windows Media Player 7.0

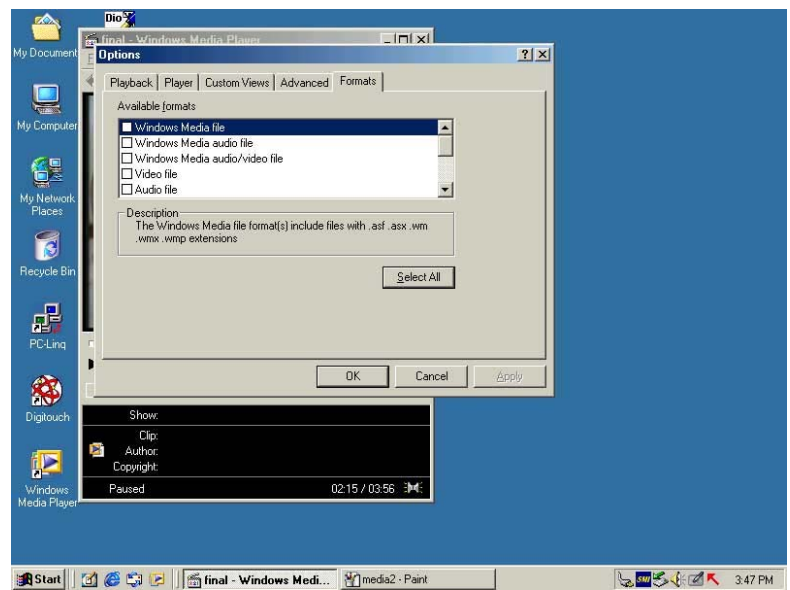
- 1) Execute “C:\WProgram
files\Windows Media
Player\WMplayer2”



- 2) Select “View” in the
menu bar and Click
“Option”.

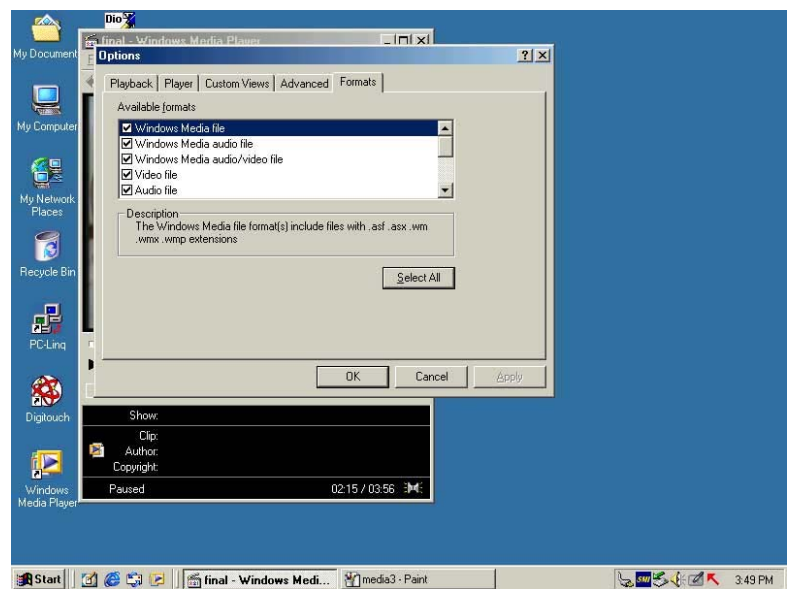


3) Select “Formats”.



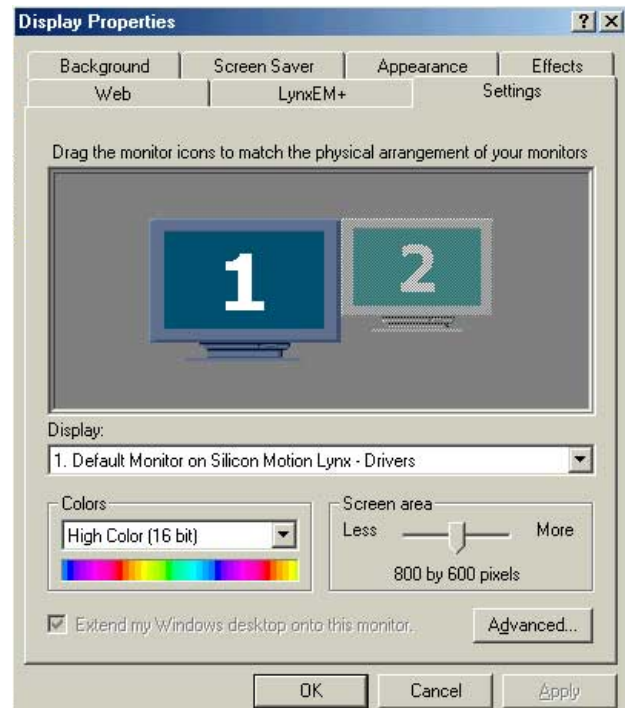
4) Click “Select All” Button

5) Click “OK” Button



5. Display setting

- 1) [Start] -> [Setting] -> [Control Panel] -> [Display Properties]
- 2) Select “High Color(16 bit)”
- 3) Manipulate 800 by 600 pixels



- 4) Select “Apply the new color settings without restarting?”, and then click “OK” button.

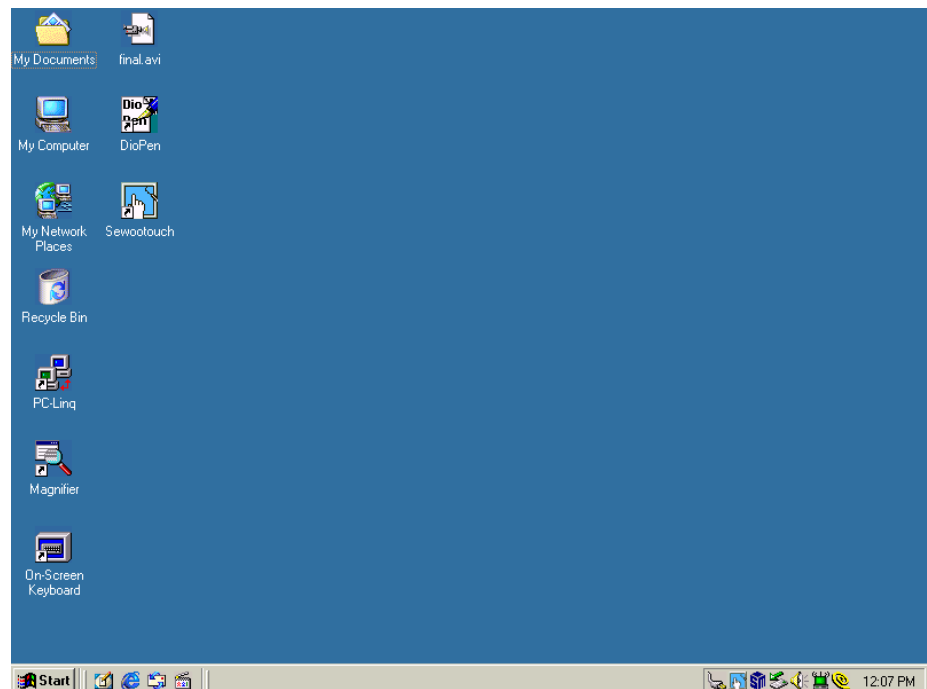


6. Touch Screen.

Touch the screen to select the icons in Windows environment in order the run the

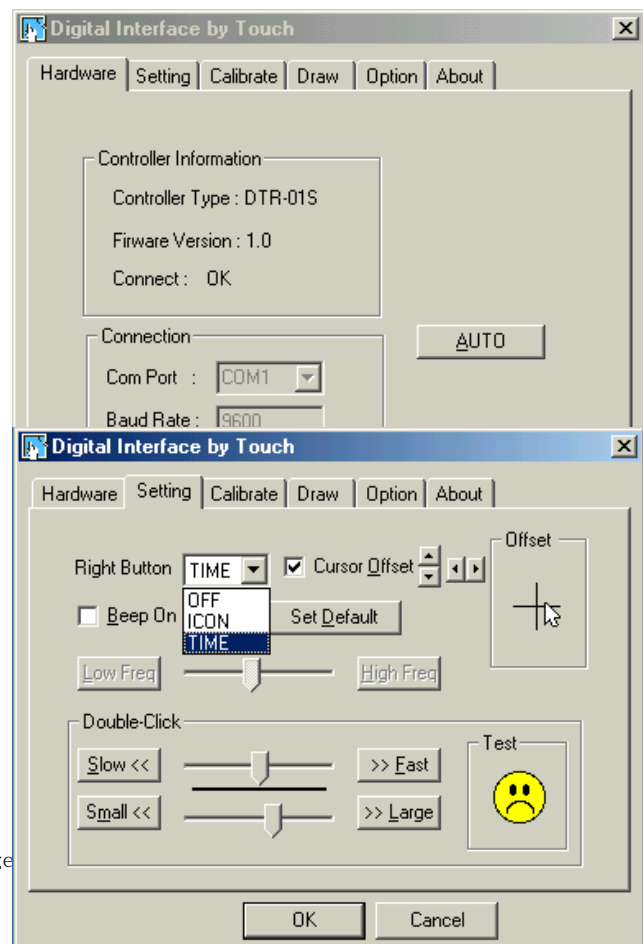
applications/programs or to draw in the Paint application.

- 1) Click Touch Configuration Icon

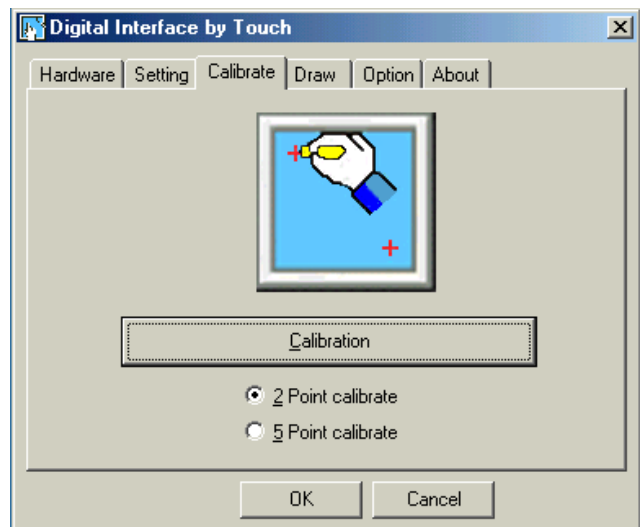


Touch Configuration Icon

- 2) Check that Connect is “OK” sign in “Controller Information” Frame.
If not, Click “Auto” Button and then “OK” sign could appear.
- 3) Choose “TIME” mode in Right Button, and adjust Cursor Offset Arrow if you would set the curser more correctly.



4) If you calibrate the touch panel in SMARTTABLET, click “Calibration” button.



First point



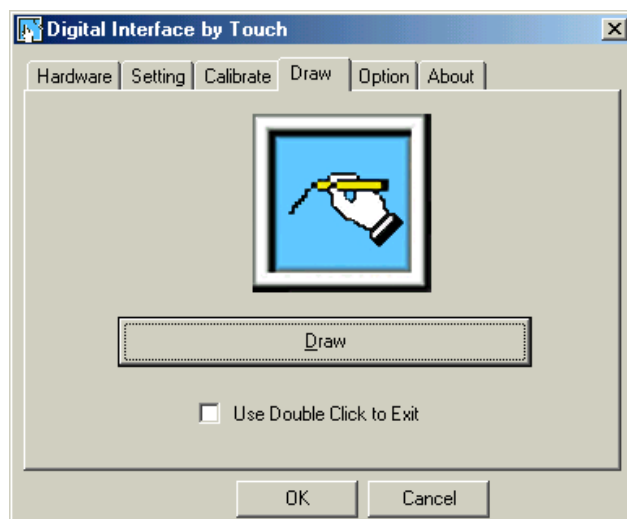
5) First point should be touched in 1~2 second and then “Calibration first point success” Box would come out, if you do calibrate correctly. Second point should be done in same way.

Note : Push “Ctrl + Tab” Key in SMARTTABLET, if the touch panel doesn’t work correctly.



Second point

6) If you’d like to test touch position or status, Click “Draw” button and then check them.

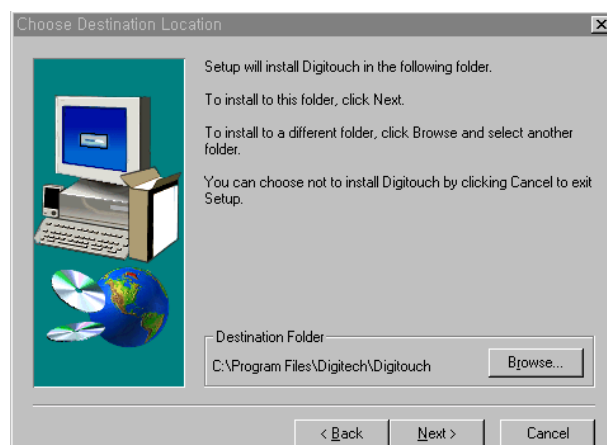


*** Touch Program Installing and Setting

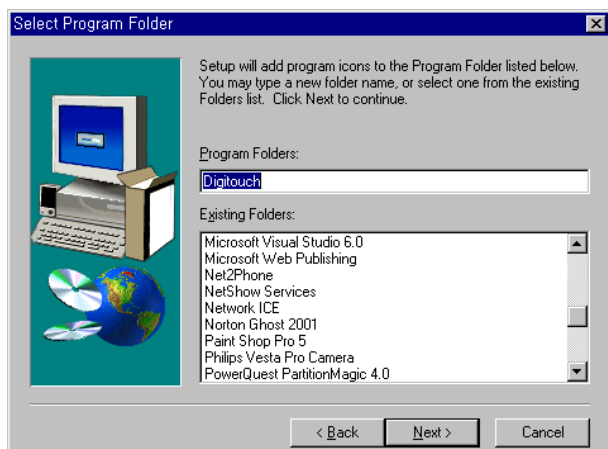
- 1) Click Setup icon in
C:\WSammiWDigiTouch



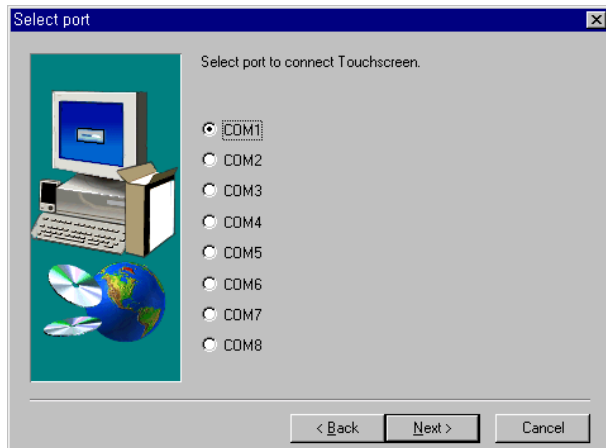
- 2) Click Next



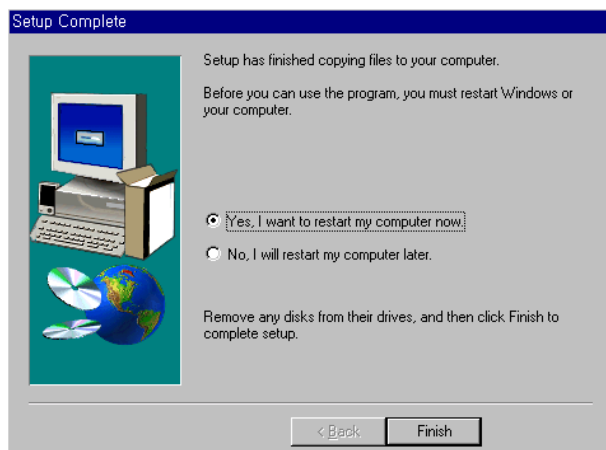
- 3) Click Next



4) Select USB to connect to Touch Screen and click Next

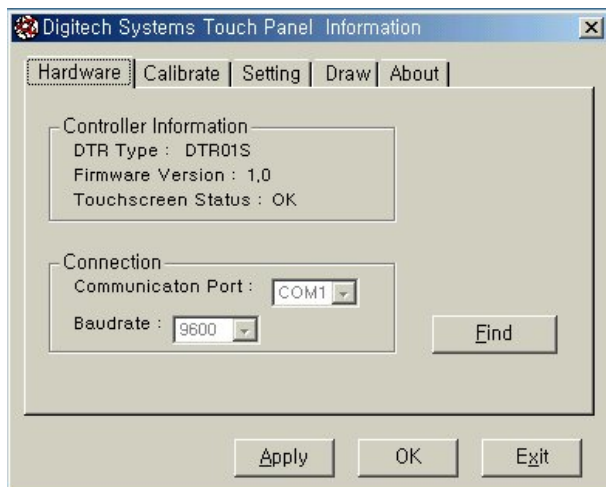


5) Click Finished Button.



DTR Information (Controller Information)

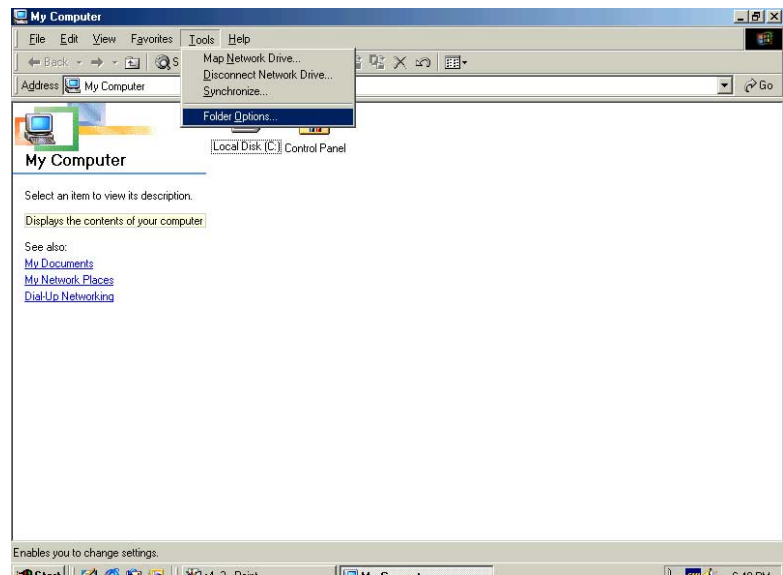
6) Click Digitouch icon in Desktop.
Digitouch System Touch Panel
Information would be displayed.



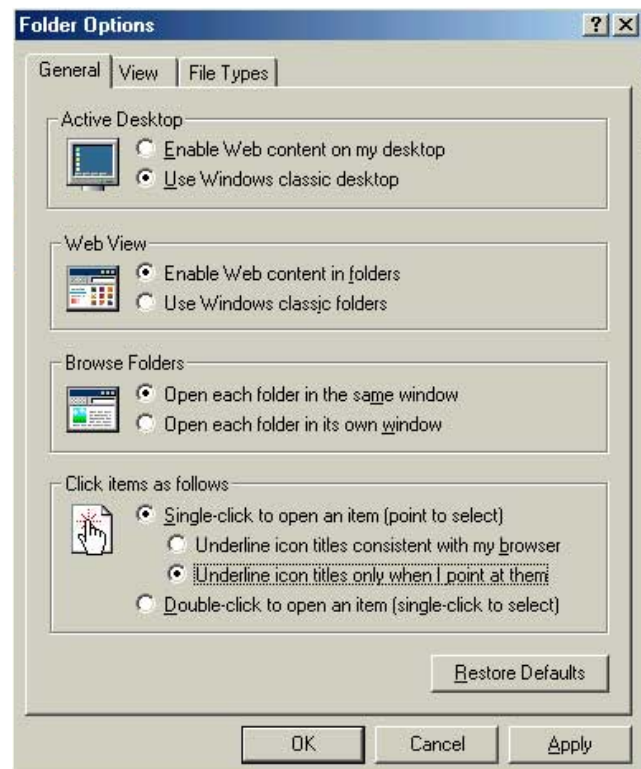
7. One Touch Setting (Not recommended)

Note : If you'd like to choose "One click" Option, you have to choose "ICON" Mode instead of "TIME" Mode in Touch configuration.

- 1) Select "Tools" in Menu bar, and click "Folder Options".



- 2) Select "Underline icon titles only when I point at them"



8. Stylus Pen.

Inputs the characters in certain applications such as Excel, Word, PowerPoint and etc. or while system setting.

9. Installing PCMCIA Card.

Refer to the related manuals while installing driver for Modem or LAN card.

- Insert the PCMCIA card or into PCMCIA slot of SmartTablet, and then follow the related manuals.

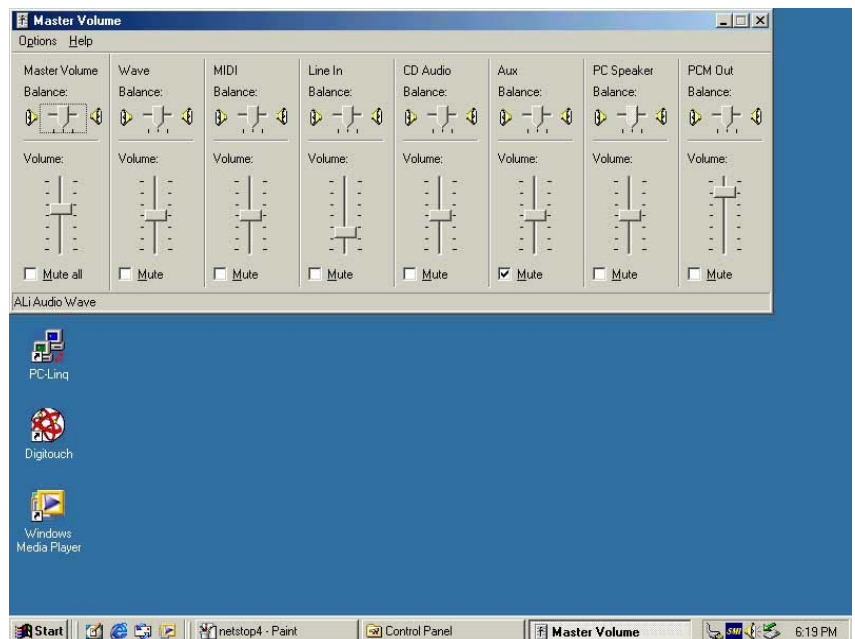
(Note that SmartTablet supports both 3.3 volts and 5 volts:)

10. Connecting Monitor.

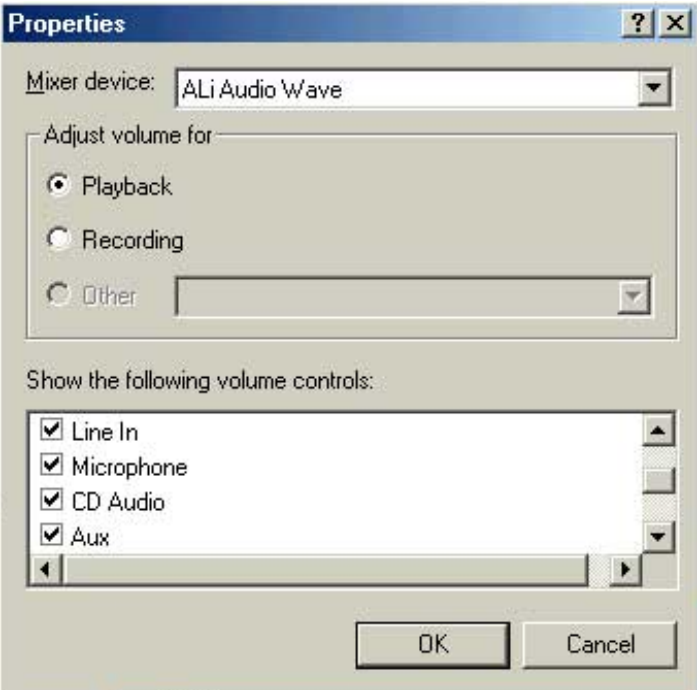
Connect one end of included mini VGA cable to VGA port of SmartTablet and other end to Monitor.

11. Master Volume Setting

- 1) Click “Master Volume” button in States bar.
- 2) Select “Options” and Click “Properties” in menu bar

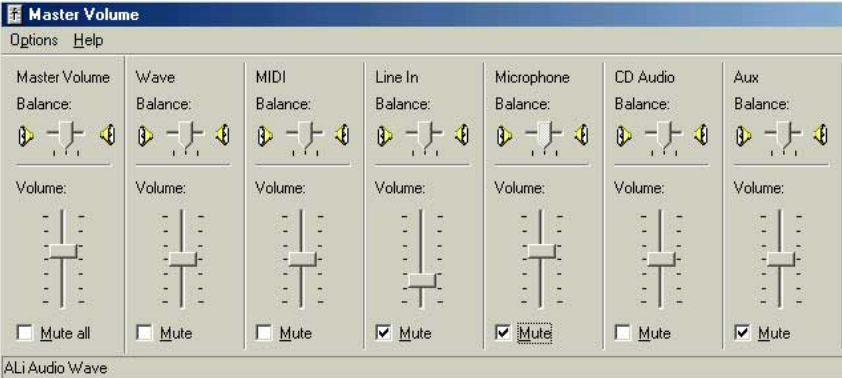


3) Check “Microphone” and Click “OK” button.



4) Check “Line in Balance”

5) Select “Options” and Click “Advanced”



6) Click “Advanced” button

