

## **Wireless Security Key Model T100**

### ***Introduction***

T100 Wireless security Key is designed to protect your files from any unauthorized access. You can conveniently carry this key as a badge or as part of your key chain. When you walk away from your PC, your absence will automatically be detected and your PC will restrict access; when you walk back to your PC, it will automatically grant full access.

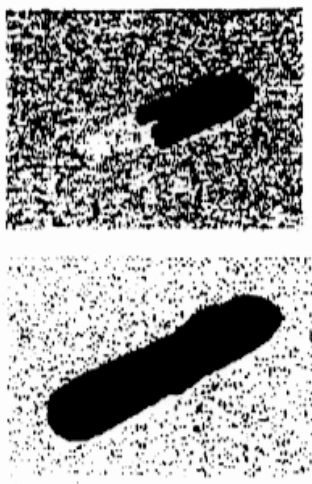
### ***System Requirements***

IBM PC with Windows 98, ME, XP and 2000 with USB port

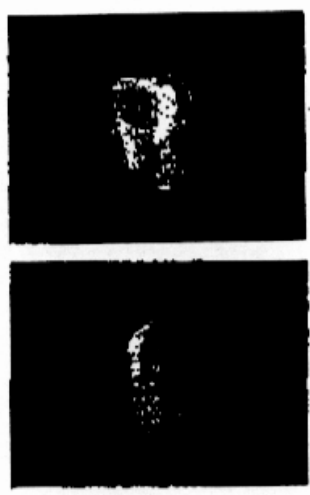
***This package contains***

- Wireless Access Key
- Access Key-holder
- USB Dongle
- USB Dongle- holder
- USB extension cable
- Safecom's Secure Desktop software
- User Guide
- One-year limited warrantee

USB Receiver key and holder



Personal Security key and holder



## **Installation**

- Install the USB Dongle on any USB port on your computer or laptop
- If needed, the extension cable may be used and the Dongle unit may maybe secured to the side of the computer or laptop housing.
- Make sure the small AUTO/OFF sliding switch on the side of your wireless access key is set to OFF.
- Insert Secure Access CD and on "Install" Icon to begin the installation.
- Upon completion of the installation software, you will be prompted to register your Wireless Access Key.
- Slide the Auto/Off switch to Auto position.
- At this time, your Wireless access key code will be automatically read and registered on your PC.

- Upon Powering up, system will self-secure (Arm itself)
- Turn the small switch on the side of transmitter to AUTO position to allow access
- Log-in to your user profile.

- System will allow access as long as access key is within an operating distance of your firewall (6 to 20 feet)
- System will block access as the key is removed from the operating distance of the firewall.

## **Manual Firewall System**

- Upon Powering up, system will self-secure (Arm itself)
- Turn the small switch on the side of transmitter to AUTO position to allow access
- Log-in to your user profile.
- System will allow access as long as access key is within an operating distance of your firewall (6 to 20 feet)
- System will block access if the key is removed from the operating distance of the firewall.
- Simply press the Push-button on top to instantly secure access to your PC/Laptop
- Press the Push-button on top of your access key again to unblock your system

◆ Notice: The changes or modifications not expressly approved by the party responsible for compliance could void the user's authority to operate the equipment.

◆ THIS DEVICE COMPLIES WITH PART 15 OF THE FCC RULES. OPERATIONS IS SUBJECT TO THE FOLLOWING TWO CONDITIONS: ( 1 ) THIS DEVICE MAY NOT CAUSE HARMFUL INTERFERENCE AND ( 2 ) THIS DEVICE MUST ACCEPT ANY INTERFERENCE RECEIVED, INCLUDING INTERFERENCE THAT MAY CAUSE UNDESIRE OPERATION

## ***Secured Desktop for Restricted Access***

- In secure Desktop mode, you can allow access to a pre-determined limited number of application programs on your system by other Users in your absence.
- Right-click on the green Key Icon on the Task-Bar
- Select Secure Desktop option
- From the Application Icon list on the left portion of your screen, simply select, drag & drop those applications to be accessible in the restricted mode and drop them into the list on the right side of the screen.