

Network Observation System

netALL

User's Guide



Thank you for choosing our Network Observation System, netALL.

All the safety and operating instructions should be read before the appliance is operated and retained for future reference.

Keep this manual in an easily accessible location for further reference.

The specifications and the design of this product are subject to be modified without any prior notice in order to enhance product quality.

If you face any kind of difficulty to use the product or if you have any question, please feel free to contact our service center near by you or the store where you purchased it.

NOTICES TO USER

This device complies with Part 15 of the FCC Rules.

Operation is subject to the following two conditions:

- (1) this device may not cause harmful interference, and
- (2) this device must accept any interference received,
including interference that may cause undesired operation.

One or more of the following statements may be applicable:

FCC WARNING

CAUTION : Any changes or modifications in construction of this device which are not expressly approved by the party responsible for compliance could void the user's authority to operate the equipment

TABLE OF CONTENTS

I. SAFETY INSTRUCTION	4
1. READ INSTRUCTIONS	4
2. PRECAUTIONS	6
II. FEATURES.....	7
1. PACKAGE CONTENTS	7
2. PARTS OF DOME CAMERA SYSTEM.....	8
3. PARTS OF DVR BOARD.....	8
4. SPECIFICATION OF DVR BOARD	8
5. COMPUTER SYSTEM RECOMMENDED	8
III. HARDWARE INSTALLATION.....	9
1. TO INSTALL HARDWARE (BOARD & CAMERA)	9
2. CAMERA INSTALLATION (I)	9
3. 2ND- INSTALLATION	10
4. ADDITIONAL CAMERA INSTALLATION.....	11
5. EXTENTION CABLES (60FT)	11
IV. DRIVER INSTALLATION	12
1. START OF DVR PROGRAM.....	16
2. CAMERA INSTALLATION (II)	16
3. WHEN USED SENSOR/ALARM & ETC.	16
V. FUNCTIONS	17
1. MAIN MODE (MONITORING MODE)	17
2. MOTION DETECTION	20
3. RECORDING SETUP.....	22
4. NETWORK SETUP.....	24
5. SEARCH	25
6. NETWORK MODE (CLIENT MODE)	27
VI. SPECIFICATION	29
1. MULTI DOME CAMERA	29
2. DVR BOARD (Board part of DVR)	30
VII. TROUBLE SHOOTING	31
VIII. FAQs	32

I SAFETY INSTRUCTIONS



CAUTION: TO REDUCE THE RISK OF ELECTRIC SHOCK, DO NOT TOUCH ANY PART OF THE PRODUCT. NO USER SERVICEABLE PARTS INSIDE. REFER SERVICING TO QUALIFIED SERVICE PERSONAL.



This lightning flash with arrowhead symbol is intended to alert the user to the presence of insulated "dangerous voltage" within the products enclosure that may be of sufficient magnitude to constitute a risk of electric shock to persons.



This exclamation point symbol is intended to alert the user to the presence of important operating and maintenance (servicing) instructions in the literature accompanying the appliance.

1. READ INSTRUCTIONS

Read all of the safety and operating instructions before using the product.

WARNING: TO PREVENT THE RISK OF FIRE OR ELECTRIC SHOCK HAZARD, DO NOT EXPOSE THIS PRODUCT TO RAIN OR MOISTURE.

Retain Instructions

Save these instructions for later use.

Cleaning

Pull the product out of the computer inner frame before cleaning.
Do not use liquid cleaners or aerosol cleaners.
Use dry soft cloths for cleaning.

Attachments

Do not use attachments not recommended by the appliance manufacturer as they may cause hazards.

Water and Moisture

Do not use this product near water or moisture. (For example, near a bathtub, washbowl, kitchen sink, or laundry tubs, in a wet basement, or near a swimming pool, etc.)

Installation

Do not place this product on an unstable cart, stand, or table. The product may fall, causing serious injury to a child or adult, and damage to the product. Use only with a cart or stand recommended by the manufacturer, or sold with the product.

Installation is should follow the manufacturer's instructions, and should use accessory recommended by manufacturer.

Moving

Product and cart combination should be moved with care. Quick stops, excessive force, and uneven surfaces may cause the product and cart combination to overturn.

Ventilation

Slots and openings of product are provided for ventilation, and to insure reliable operation of the product and to protect it from overheating, and these openings must not be blocked or covered.

The openings should never be blocked by placing the product on a bed, sofa, rug, or other similar surface.

Power source

This product should be operated only from the type of power source indicated on the marking label.

If you are not sure of the type of power supplied to your home, consult your dealer or local power company.

2. PRECAUTIONS

Operating

- * Before using, make sure of power supply and connection of video output.
- * While operating, if any abnormal condition or a malfunction is observed, stop using the camera immediately and then call your local dealer.

Handling

- * Do not disassemble the product and never touch parts inside of product.
- * Do not drop the product or subject it to shocks and vibrations to avoid possible damage.
- * When attaching or removing the accessory, handle with care in order that moisture and dust does not enter the product.

Installation and storage

- * Do not install the product where the temperature could exceed the allowable range.
- * Be sure the ambient temperature is less than 40°C for long term continuous operation.
- * Avoid installing in humid or dusty places.
- * Avoid installing in places where there is radiation. This could damage product and other components and cause malfunction.
- * Avoid installing in places where there are strong magnetic fields and electric signals.
- * Avoid installing in places where the camera would be subject to strong vibrations.
- * Never expose the product to rain and water.

Cleaning

Turn the power off and wipe off the dirt with dry soft cloths.

Do not use alcohols, petroleum distillates, liquid cleaners or sprays.

Daily check

Make daily check for proper operation for surveillance use. In order to maintain normal operation, the output of product should be checked by user everyday for a clear and focused picture.

II FEATURES

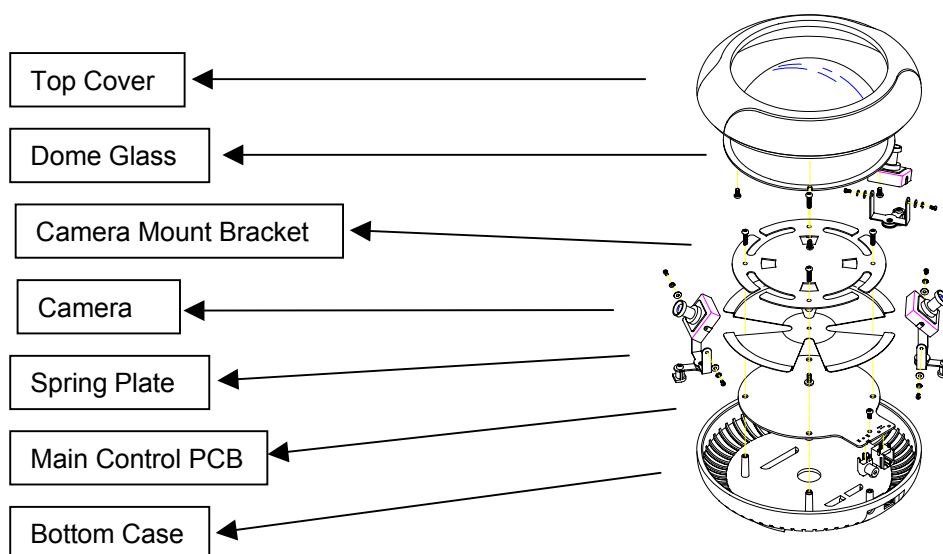
Network Observation System, netALL

- * Multi Splitter Display
- * Quad screen display (System has two or three cameras built-in)
- * Vandal-proof Glass and Metal Case
- * Convenient installation - wall or ceiling
- * Convenient camera extension via connector RJ11 for securing blind area
 - * RCA connection available, when needed.
- * One-touch Recording and convenient playback.
- * Multi-task PC monitoring available
- * Intelligent Motion Detection
- * Compatible with Alarm and Sensor
- * User-friendly interface
- * Simultaneous Image saving and printing
- * 60 ft (18 meter) DIY extension cable included

1. PACKAGE CONTENTS

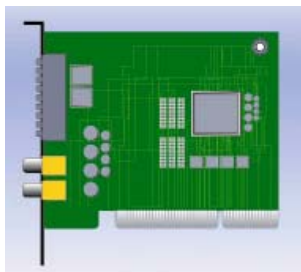
Multi Dome Camera System	1 set
DVR Board	1 pc
60ft cable with RS232 converter	1 pc
30ft external cable	2 pcs
Ceiling mount bracket	1 pc
Software CD (Manual included).....	1 pc
Mount screws and Cable tie.....	8 pcs each
Install guide	1 pc
Power adapter	1 pc

2. PARTS OF DOME CAMERA SYSTEM



3. PARTS OF DVR BOARD

Sensor ►
Video Output ►
Video Input ►



4. SPECIFICATION OF DVR BOARD

- Display Mode : 30 Frame Display
- Resolution : 640*480
- Recording Speed : Max. 30 frames per second
- Compression : MPEG-4
- Average size of data : 2.5 KB / frame
- O/S : Windows 98 SE/ME/2000/XP

5. COMPUTER SYSTEM RECOMMENDED

- * CPU : Pentium II 500Mhz or better
(Pentium III 733Mhz recommended)
- * O/S : Window98/SE/ME/2000/XP
- * Memory : 64MB minimum (128 MB recommended)
- * VGA : Over-Lay Supported Graphic Card
(ATI, TNT2, G-Force Chip Ranges recommended)
- * HDD : 3GB minimum (10GB recommended)

III HARDWARE INSTALLATION

Please be sure that installation is made in accordance with the following order.

1. TO INSTALL HARDWARE (BOARD & CAMERA)

Before installing, be sure to check whether the power is off.

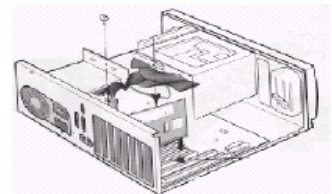
Keep your clothes away from circuit section of board.

Static electricity may cause disorder.

Do not touch circuit section with hand.

To install, hold the edge of the DVR Board and do not insert by force.

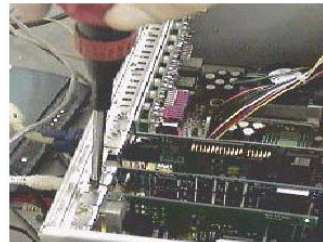
With the power off, unfasten the screws at the rear panel of PC to open the cover. Insert DVR Board of netALL into PCI slot of the main board. (Usually PCI slot is white.)



* Board



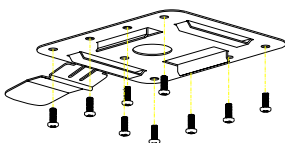
* PCI slot



And fasten it to PC case with screws.

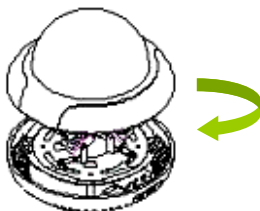
2. CAMERA INSTALLATION (I)

(1).



For installing camera, please firstly decide the spot where it should be to installed and fix the Ceiling Mount bracket on the ceiling

(2).



Turn Glass Cover to counter-clockwise direction to open the case and verify visually whether cameras in it are correctly connected.



As the direction of picture shown above, put and slide the case on Mount Bracket which was already fixed on ceiling, pushing it carefully until you hear clear metallic sound, "TIC".

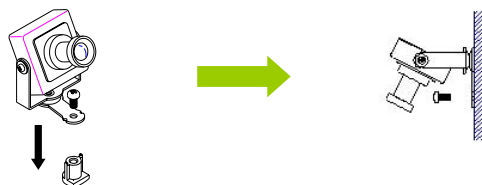
3. 2ND – INSTALLATION

In case of exclude one camera from system and installing at blind area.

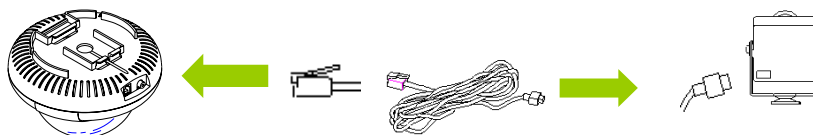
- (1) Please remove the connector from camera and then pull camera out through the Guide Hole, pushing Plate Spring down smoothly.



- (2) Take out "Guide Pole" from Camera with screw driver (tool) as well and install camera the spot where the installation is needed with supplied screws.



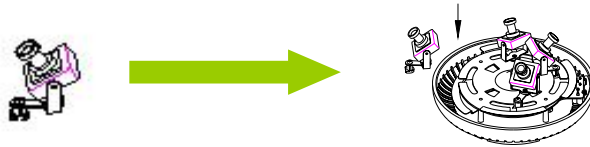
- (3) Then, connect Modular Jack with supplied 30ft extension cable in the box and insert the jack of opposite direction of cable to 4 pin connector terminal of camera at rear side.



4. ADDITIONAL CAMERA INSTALLATION

This is the way of installation for Additional camera kit

- (1) Please push the Spring Plate down and insert a camera through the Guide Hole firstly as shown the picture below. And than connect with 4 pin connector to the rear of camera. After having done it, please adjust camera, looking at the video displayed on monitor screen.

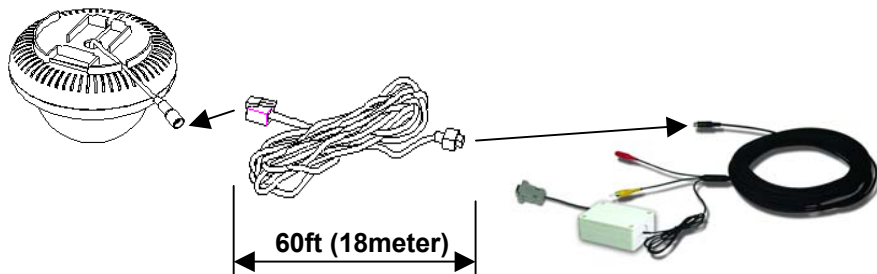


- (2) In case of additional installation of Network Observation System at outside of system, please follow same way of “3. 2ND – INSTALLATION” on page 9.

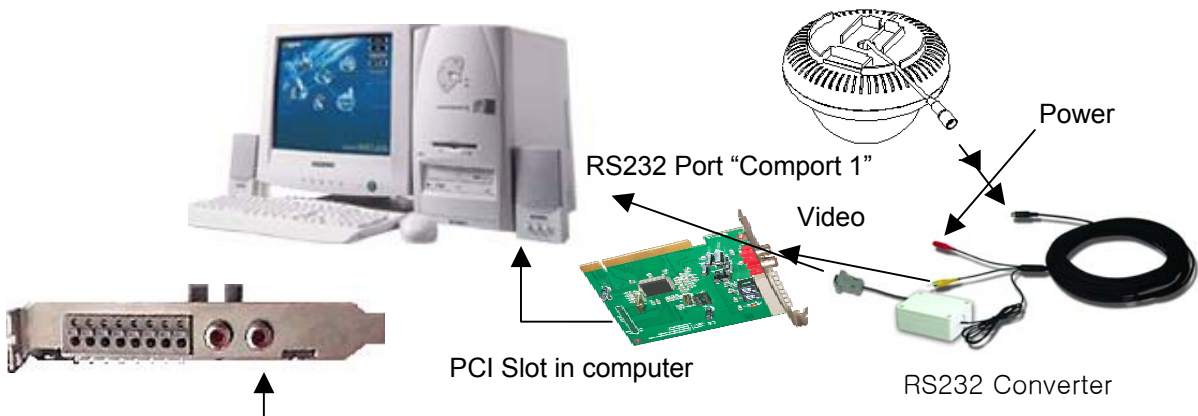
5. EXTENTION CABLES (60ft)

This is the way of extend the distance for installation for camera

- (1) If longer cable system is required, please use 60ft of option cable additionally.



After the installation of cameras, connect then cables to computer and case as the picture shown below.



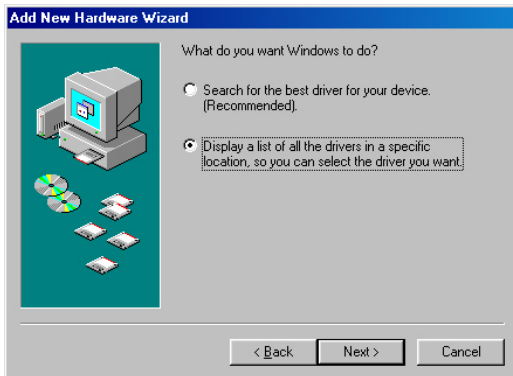
RCA Jack here ! (Yellow one)

IV. DRIVER INSTALLATION

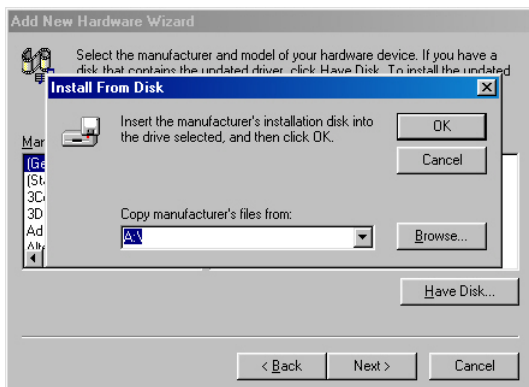
After installation of board DVR into PCI slot of computer, power it on. Then, load program CD, “netALL” onto CD Drive of your computer. After that, please install Driver with following procedure. 주의사항 : win98의 경우 영상보드를 끼웠을 경우 자동으로 인식하지 않는 경우는 아래의 매뉴얼 대로 하시면 설치가 가능합니다. 그리고 win2000, XP의 경우 대부분 자동으로 설치가 되기 때문에 CD롬 위치정보를 입력하시면 자동설치가 됩니다.



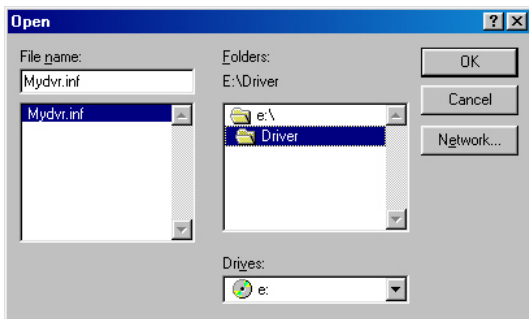
Click the button “Next”.



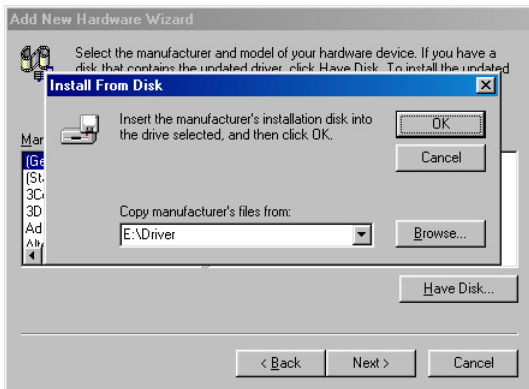
Check the button “Display a list of all the drivers in a specific location, so you can select the driver you want” and click the button “Next”.



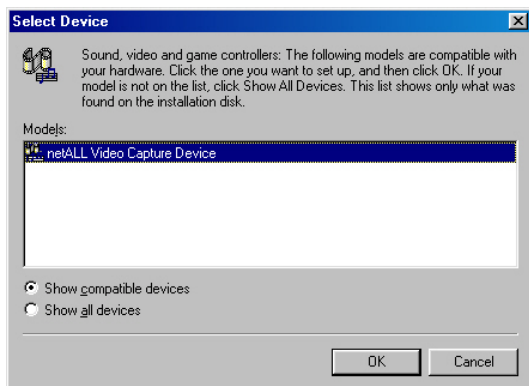
Click the button “Browse...”.



Select CD-ROM Drive and choose Driver folder in CD-ROM and click the button “OK”.



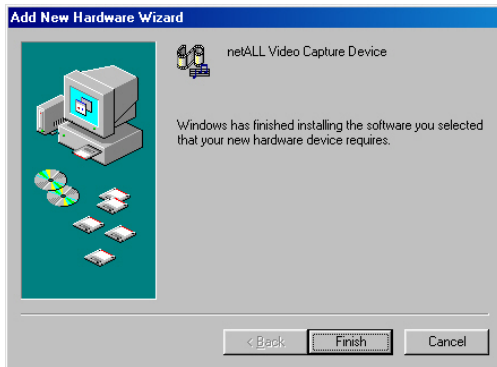
Click the button “OK”.



Check “netAll Video Capture Device” and click the button “OK”.



Click the button “Next”.

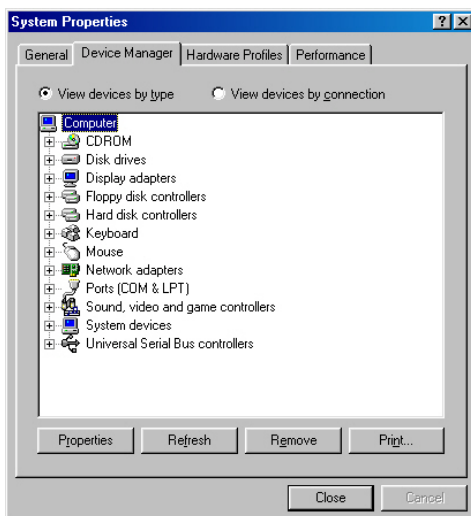


Click the button “Finish”.

The installation of “netALL Audio Device” is started automatically, when all the above procedures is completed. If the installation of above is not made automatically, please make manual install of it.

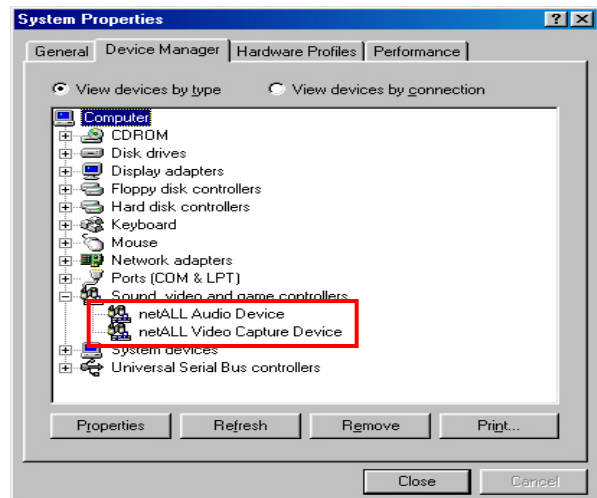
Now all the driver installation is completed.

Put the mouse on screen and select “System Properties”, clicking the right mouse button.



Click “Device Manager”, when the above window appear.

Please verify that “netALL Audio Device” and “netALL Video Capture Device” appear at Sound video and game controller. If you can see the screen above, the driver installation is completed.



1. START OF DVR PROGRAM

When installation is completed, netALL icon will appear on your monitor screen as below.



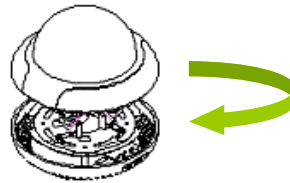
To start DVR Program, please double-click the netALL icon on monitor screen or you can click the button, Start > Program > netALL > netALL.

2. CAMERA INSTALLATION (II)

When all the above procedures were made, including the installations of DVR Board and program, please adjust then the angle of each camera to the spot where you want to aim, monitoring the screen which is displayed by DVR.



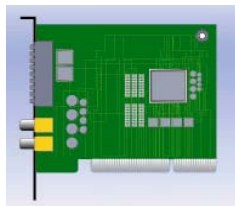
As the final step of installation, turn Glass Cover to clockwise direction to tighten cautiously but firmly.



3. When used Sensor/Alarm & etc.

You may additionally use sensor, alarm or other video monitor. Please refer to below description for connecting to netALL Board.

Sensor ►
Video Output ►
Video Input ►



1 2 3 4 5/6 7/8 9 10

- | | | | |
|-----|-----------------|----|--------------|
| 1 | Sensor 1 Input | | |
| 2 | Ground | 9 | Video output |
| 3 | Sensor 2 Input | 10 | Video input |
| 4 | Ground | | |
| 5/6 | Sensor 2 Output | | |
| 7/8 | Sensor 1 Output | | |

V. FUNCTIONS

This brief summary is for easy reference only. For details please read this manual carefully.

1. MAIN MODE (MONITORING MODE)



To start DVR Program, please double-click the netALL icon on monitor screen or you can click the button, Start > Program > netALL > netALL.

Then, following window appears.

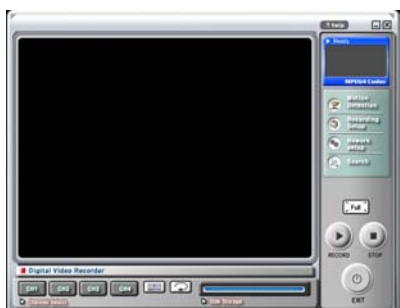


netall is the password as default

If you want to change password, type the old one into the box “password” and type the new one into “New Password” and click the button “Change”. Then, the password is changed.

- * **Remarks** ... As password, small letters are only used and it is possible to set 12 letters maximum.

Put firstly ID and Password to get into the Main



- * The initial screen appear in quad mode regardless the number of Channel
- * On screen, the channel doesn't connect with camera will remain blank status without any video.
- * The basic Sequential time set up is 2 seconds.
- * If you want to see a certain channel only in full mode at Quad screen, double-click the screen of channel you want, putting the mouse on it. To revert, double-click the screen again.



Ch Select button

These button are for Channel selection.

You can see the channel you want to see in full screen, when clicking button. The color of the selected channel buttons will change to blue from white to distinguish with other channels .

The screen will change to full status when you double-click a channel, putting the cursor on it. To revert, click the screen again.



Quad button

Clicking this button, you will see all channels in Quad mode.



Sequence button

Clicking this button, you can monitor all the channels in Sequential mode.
The setup of dwell time is made in 2 seconds.



HDD Storage Status Bar

The space available presently on hard disk is displayed with Blue bar. The Red bar and percentage mean the storage of recording in Data Drive.



Record

To start recording, click this button. Its color turns RED and that means recording is made.



Stop

Click this button to stop recording



Exit Button (1)

To exit the program, click this button. You may also click X button as well.
When you click the exit button, a dialogue box will appear to get your confirmation whether you really want to exit from this mode or not and you click the button YES, if you want to exit.



Current Time

On this window, the current time and date are displayed.
On this window, you will also find a lamp of motion detection. The button in white will blink to red instantly to alert you, when motion detection is activated.



Motion Detection

Clicking this button, you will get into Motion Detection Setup mode.



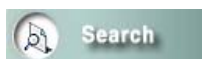
Recording Setup

Clicking this button, you will get into Recording Setup mode.



Network Setup

Clicking this button, you will get into Network Setup mode.



Search

Clicking this button, you can search recorded video you want to see.



Full Screen Button

The screen will appear in full mode without netALL window, when you click this button. To revert to the original window, click the bar netALL on the task bar.

- * **Remarks** ... The screen would minimize and stay as a bar at taskbar, when you click Full Screen Button, if the VGA card in computer system is not recommended one



Minimize Button

Click this button to hide netALL Window. It stays as a bar on the task bar.



Exit Button (2)

To exit the program, click this button. When you click the exit button, a dialogue box will appear to get your confirmation whether you really want to exit from this mode or not and you click the button YES, if you want to exit.



Help Button

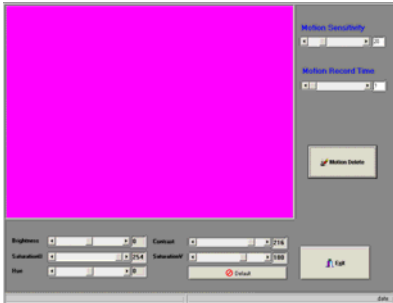
By clicking this button, user will obtain the basic function of DVR. This button is especially helpful, when the manual is not available.

Top Screen Button

When you click this button, the screen of netALL stay always on Top Screen. The letters will change into Red from Blue, when this function is activated.

2. MOTION DETECTION

Press this  button to open Motion Detection and View Display Adjustment.



- * User can set up to 4 motion grid boxes on the screen for Motion detection function.
- * Motion Record Time can be programmable from 1 to 99 seconds.
- * Letters in red, Event Recording will appear instantly on the space between the button of Motion Record Time and the one of Motion Delete, when motion detection is activated.



Motion Sensitivity

This slider button is for Motion Sensitivity Control. Sliding this button, you can adjust the sensitivity of Motion. The most proper value recommendable is 7 for ordinary environment.



Motion Record Time

By sliding this button, Motion Record Time can be programmable from 1 to 99 seconds. It works from the moment when Motion detection is activated.



Motion Grid Erase Button

Clicking this button, you can cancel all the Motion grid boxes you set before and new setting up to four of Motion grid boxes by drag and drop of mouse available on the screen. The Motion grid box which you set once will not be erased, unless you push this button.



Exit Button

Click this button to close this Mode and return to Main mode (Monitoring mode), saving the changed input value simultaneously.

View Display Adjustment

Adjusting these slider buttons, you can control the image quality such as Brightness, Contrast, Saturation (U), Saturation (V), Hue, and etc.



Use this button to adjust the brightness of screen

Saturation (U)



Hue



Contrast




Saturation (V)



Default button

Clicking this button, View Display Adjustment reverts to the Default Value.

3. RECORDING SETUP

Press the button  to open Recording Setup.



Camera Title

The camera ID will appear at upper side of each channel on screen, when you type the ID of each camera into the text box. It would be convenient to find the location of a camera. Available is up to 12 letters.

Camera Title	R&D	ENTRANCE	OFFICE	CONFERENCE
--------------	-----	----------	--------	------------

Start Rec. and End Rec.

Using these two dropdown list boxes, Set a time to start / end recording.

Start Rec.	03-08-07	오전 10:05:50
End Rec.	03-08-20	오전 10:05:50



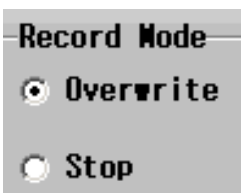
Continuous Record after Schedule Recording

Selecting the button, you have a choice of continuous recording after the above already scheduled period.

Recording Speed Control Button

Rec. Speed	15 Fps
------------	--------

Select number of frames per second (fps) for recording. It is controllable from 1 Fps to 30 Fps.



Record Mode

You can choose a check button of Overwrite or Stop for a case hard disk is full. Automatic overwriting on the oldest video record can be made, when you choose Overwrite. And old video recording will be protected, if you choose Stop.

Sensor Setting

You may additionally use sensor and alarm for your special purpose. In that case, you check the box you want to be activated, after connecting sensor and alarms.

Sensor Setting

☐ Sensor Input 1

☐ Sensor Output 1

☐ Sensor Input 2

☐ Sensor Output 2

Schedule Record

If you set recording period, Time Schedule window appears as follows. When you want no recording, or event recording at a particular time range, click on the time, which will turn yellow, red and revert to green consecutively. Match a color of time band with that of recording mode, Schedule Record, Event Record and No Recording respectively as you want.

0	1	2	3	4	5	6	7	8	9	10	11
12	13	14	15	16	17	18	19	20	21	22	23
Schedule Record				Event Record				No Recording			

Record Setup History

Recording schedule is displayed with red bar graph. Green bar shows the current time. You can check the scheduled time by switching with intervals of 12 hours. The letter between the buttons shows a lapse against the current time.



to find schedule before 12 hours



to see after 12 hours

Save Button



Click this button to apply the changed values.

Exit Button



Click this button to close Setting Mode and return to monitoring mode.

- * **Remarks** ... If you want to erase the file recorded, you click My Computer > Data Drive “C” (or “D”) > netALL> Image-Save > files classified by date and erase the file you want.

4. NETWORK SETUP

Press the button



to open Network Setup.



Data Drive

The Data Drive is arranged by Auto Setting. If you prefer to save it into other drive, you change the drive by clicking check box of the drive you want.

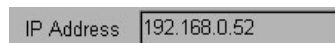
Network Settings

Network Mode



TCP/IP has been set up as default.

IP Address



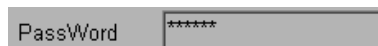
Program will automatically recognize IP address of system. This IP is required, when you get into the network mode at remote site.

TCP/IP Port



Set "6500" as default.

Password



Type password into box. The password can be changed, if you set new one at Main mode. (Please refer to page 17)

Save Button



Click this button to apply the changed values.

Exit Button



Click this button to close Setting Mode and return to monitoring mode

RS232C Select Button

Selecting ports, Com1 and Com2, you can control cameras. Set "com 1" as default.,

- * **Remarks** ... All the computers has two RS232C interface ports at the rear panel and the interface port of netALL set "Com 1" as default.
However, the most of computer doesn't describe the No. of ports. And it is not easy to find the correct one. So, please follow the below guide to connect RS232C port to the terminal of "Com1" correctly.

Please connect the port of RS232C from the cable to the one of both terminals firstly, when you install "netAll" to your computer system. And try to operate, clicking the Channel Select Button and Full Button which are reserved at main mode. If they work, the connection was made correctly at "Com 1". If not, please get into Record Setup mode and click the button "Com2" at RS232C Selection to change the interface fort from the defaulted one, "Com1".

TV System

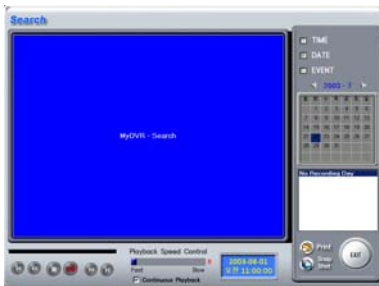
Selecting button, user set NTSC or PAL.

5. SEARCH

Press this



button to move to Search Mode



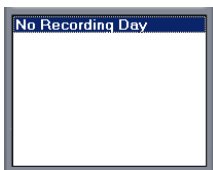
Date Selecting Window

User can select easily the date by clicking the date on the calendar. When the date keeps the recording data, the figure will be shown in red on the calendar.



Time, Date and Event button

Choose Time, Date or Event and click the text. The light in blue comes and the Record of History classified by date appears on text box



Event History Window

The record of Event History classified by time, date and event appears in this text box.

* **Remarks** ... "S" stands for Schedule Recording.
"U" stands for User's Recording.

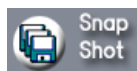
Ex) **103707-E.All** ... **10:37:07 AM** (July, 22) Recorded by **Event** recording

* **Remarks** ... If you want to erase a Recorded file, get into Data Drive, "C" (or "D") > image save > the file classified by date first and erase the file you want.



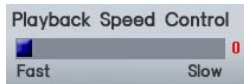
Print Button

To print picture, click this button at a picture you want.



Snap Shot Button

Use this button to save a frame of image in BMP file. The directory of these image files : C > program file > netAll > Save-Image



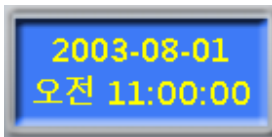
PB Speed Bar

This bar shows the speed of Playback. By using this slide button, the speed of playback can be adjustable. Put the button left side for fast search. Put the button right side for slow search.



Continuous Playback

Check the mark, and continuous play mode begins to work. When one file is finished, the next file begins to play automatically. If you press it again, continuous play mode ends.



Current Time Box

It shows current time and date



First Frame

This button allows to move to the first frame of a recorded file



Previous Frame

Use this button to play frame by each 15 frames in reverse order.



Stop

Press to stop playing. After stopping, a file is to be selected again.



Pause and Replay

Press this button to pause and replay.



Next Frame

Press this button to play forward frame by frame.



Last Frame

Click this button to find the last frame of a file.

6. NETWORK MODE (CLIENT MODE)

For monitoring at client mode, you must Install firstly netALL.NET program at a PC where a remote monitoring is to be performed.



Load program CD, “netALL” onto CD Drive at a computer firstly. You will see three folders, “Main”, “Driver” and “Network” on your monitor screen. Double-click “Network”. Then, you will see “Setup.exe”. Click it. The installation of DVR program will be automatically processed. The Dialog boxes as shown above will appear in succession. Click the button “NEXT” and “INSTALL” orderly and click the button “FINISH” finally for program installation.



NetALL-Network.Ink

Two icons, “netALL” and “Network” will appear on screen when the setting-up of all programs is completed.

For getting Client GUI, please double-click the icon, “Network” and you will get into the Client GUI. Then, put the network IP (* Remarks ... It is the same IP of Network Setup at Main mode) into the text box and press Connect button. The box which required Password will appear. Input password (* Remarks ... It is the same password of Network Setup at Main mode) and the below Client GUI window will appear.



This window shows the actual connection status to a network through internet. Password, Transfer>>, Request>> Password yes>> To show the success or failure of connection.

Minimize Button



Press to minimize Network window. It stays as a bar on the task bar.

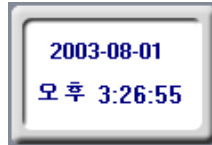


Exit Button

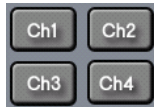
Use this button to close Client GUI.

Clock Box

It shows current time and date.



Ch Select Button



Printing Button

Clicking this button, printing and saving into Drive make simultaneously.



Image Button



Clicking this button, immediate image save into the reserved drive is made.
The route of directory ; C (or "D") > netAll > Network > Image Save

Connect IP, Port



Type IP address into the text box and click Connect button for monitoring at Client mode.

* **Remarks** ... IP address is obtained from Network Setup at Main mode.

Port



Set 6500 as default

Connect Button



Click this button to connect to network.

Disconnect Button



Click this button to disconnect network. When you change password, network will stop.

VI SPECIFICATION

1) Multi Dome Camera System

Multi Dome Camera System	
Image Sensor	1/4" Color CCD
Resolution	330 TV Lines
Scanning system	525 lines interlaced (NTSC), 625 lines interlaced (PAL)
Synchronization	Internal
Output signal	Standard composite signal: 1 Vp-p Composite Video into 75 Ohms
Light sensitivity	-30 IRE 3 Lux (Scene)
Auto-Iris	250 times Electronically Auto IRIS
Signal to Noise Ratio	45 dB or more (AGC off)
Gamma	0.45
AGC	ON
Input voltage	DC 12.0 V(9VDC~14VDC)
Power Consumption	1.65W or Less
Multi Dome Camera System Dimensions	
Dome Size	130Φ
Dimensions	190Φ X 140(H)
Weight	1kg
Cables	
Control	60ft(18m) Cable with RS232C Converter
Extra Cable	30ft Cable RJ11 Jack
Additional Optional Cable	60ft(18m) DIN to DIN Cable

2) DVR BOARD (Board Part of netALL)

DVR Board	
Video Display	1CH Video
Video speed	30 Frame/sec for 1ch(NTSC)- P100 25 Frame/sec for 1ch(PAL) – P100
Video Input	1CH (RCA)
Video output	1CH Composite Video (RCA)
Video Resolution	640X480 (NTSC), 640X576 (PAL)
Sensor	1CH(IN/OUT)
Video Compression	MPEG-4(Software MPEG-4)
Average size of compressed data	2.5KB / frame
Operating System	Win98, ME, SE, 2000, XP
Motion Detection	Supported
Function	Record setting, Search setting Display setting, Network Function
Board Type	PCI One Board
Minimum System Requirements	<ul style="list-style-type: none">* CPU : Pentium II 500Mhz or better (Pentium III 733Mhz recommended)* O/S : Window98/SE/ME/2000/XP* Memory : 64MB minimum (128 MB recommended)* VGA : Over-Lay Supported Graphic Card (ATI, TNT2, G-Force Chip Ranges recommended)* HDD : 3GB minimum (10GB recommended)

VII TROUBLESHOOTING

1) Video is not on.

- Check whether cables are properly connected.
- Check to see that the power of camera is on.
- Check to ensure the driver is correctly installed.

2) Program is not performing.

- See that there are all necessary files.
- Check that driver is active.
- Reboot Window, to check whether Program is working.
- See whether netALL window is hidden on the task bar.

3) Function buttons does not work.

- Try at a later time because it could happen when several buttons are repeatedly pressed.
- Check whether PC is properly performing, by running other program.

4) Recording is not made.

- Check whether the button of Continuous Record at Recording Setup mode is "ON". If not, please click the button ON.
- Be sure to put a check mark on "Overwrite" or "Stop" correctly as you want.
- When Event Record and Time Record is combined at Recording Setup, mark a check on both mode, "Schedule Record" and "Event Record" at Recording setup.
- Check the storage of hard disk.

5) Both of Channel selection buttons and Full Screen button doesn't work.

Such kind of System blocking can be happened, when you connect RS232C terminal from camera cable with Comport 2 in stead of Comport 1 at the rear of your computer. In that case, please get into Record Setup mode and click the button of "Com2" at RS232C Selection to change the interface fort from the defaulted one, "Com1".

VII FAQs

I do not know why recording function doesn't work?

Please go through Recording setup mode and check whether Recording Period Button is ON. If not, please click the button ON

Both of Channel selection button and Full Screen button doesn't work

Such kind of System blocking can be happened, when you connect RS232 terminal from camera cable with Comport 2 in stead of Comport 1 at the rear of computer. So, in that case, please get into Record Setup mode and click the button of "Com2" at RS232C Selection to change the interface fort from the defaulted one, "Com1".

I want to make scheduled recording with different speed, 15 frames per second in daytime and 5 frames at night. Is it possible?

Yes. It's possible. Please enter into Recording Setup and select the speed you want at Rec. Speed. For your information, this Network Observation System, netALL allows the various recording speed from 1 to 30 frames per second.

I want to set Data drive for System as 5GB. How long does it last?

It depends on environment. Usually recording based on 5 frames per second will be available consecutively for about 10 days at storage of 5GB. Of course, file size will be considerably reduced when movements are not frequent.

* Note) In case you want to record the real-time video in NTSC country like US, the recorded data by our Compression Algorithm of netALL (MPEG- 4) is calculated as follows;

2.5KB/frame X 30 frames/sec (NTSC) X 60 seconds/minute X 60 minutes/hour
X 24 hours/day X 30 days/month = 194.4GB/month

Can I monitor during my business trip to abroad?

Yes. You can do it if the computer you want to monitor is connected to the internet. Firstly, insert the software CD into the computer. The netALL.net icon will appear on monitor screen, when installation of program is completed. Double-click NetALL.net to open Client mode and then you can monitor the real-time video of Network Observation System even in abroad.

Camera is on the roof, and image quality is not good because of sunlight.

Please Try to change the camera position and adjust also the video quality at Motion Detection & Alarm Setup. When it is still not satisfactory, consult with an agent to add a filter or get a proper camera to substitute.

It seems that there is no more space on hard disk drives.

Please click Recording Setup button on Main mode and select “Overwrite” or “Stop” at Record Mode.

What I have to do, when I can not remember the password?

Please erase all the software of Network Observation System “netALL” in your computer and reinstall it.