

User's Manual

SELFDISK CARD READER / WRITER (CARD READER)

This device complies with part 15 of the FCC Rules.
Operation is subject to the following two conditions:
(1) This device may not cause harmful interference, and
(2) this device must accept any interference received,
including interference that may cause undesired operation.

NOTE: THE MANUFACTURER IS NOT RESPONSIBLE FOR ANY RADIO OR TV INTERFERENCE CAUSED BY UNAUTHORIZED MODIFICATIONS TO THIS EQUIPMENT. SUCH MODIFICATIONS COULD VOID THE USER'S AUTHORITY TO OPERATE THE EQUIPMENT.

NOTE: This equipment has been tested and found to comply with the limits for a Class B digital device, pursuant to part 15 of the FCC Rules. These limits are designed to provide reasonable protection against harmful interference in a residential installation. This equipment generates, uses and can radiate radio frequency energy and, if not installed and used in accordance with the instructions, may cause harmful interference to radio communications. However, there is no guarantee that interference will not occur in a particular installation. If this equipment does cause harmful interference to radio or television reception, which can be determined by turning the equipment off and on, the user is encouraged to try to correct the interference by one or more of the following measures:

- Reorient or relocate the receiving antenna.
- Increase the separation between the equipment and receiver.
- Connect the equipment into an outlet on a circuit different from that to which the receiver is connected.
- Consult the dealer or an experienced radio/TV technician for help.

Thank you for your purchase for our product.

*** Please note this manual before your use.**

SELFDISK CARD READER is the reader & writer for MMC, RS-MMC, SD and miniSD Card which supports USB 2.0 Hi-Speed.

You can transfer mass storage data on cards simply and quickly by USB port.

1. Characteristics

– Compatibility : MMC, RS-MMC, SD and miniSD Card

miniSD Adapter supplied.

– USB 2.0 Interface

CARD READER supports USB 2.0 Hi-Speed[480Mbps].

When CARD READER is connected PC, it is recognized as removable disk and you can use data on cards easily.

– Tiny and light circle design

2. Specification

- | | |
|----------------------|---|
| 1) Compatibility | : MMC, RS-MMC , SD, miniSD Card (with miniSD adapter) |
| 2) Operating System | : Windows 98SE/ME/2000/XP/2003 Server |
| | Windows CE. net 4.2 |
| | Mac OS 8.6/9.2, Mac OS X |
| 3) Drivers | : Only need Windows 98SE |
| 4) Reading Speed | : Depend on Media (6 MBytes / sec) |
| 5) Writing Speed | : Depend on Media (5 MBytes / sec) |
| 6) Operating Voltage | : 4.5V ~ 5.5V |
| 7) Operating Temp | : 0 ~ 45℃ |
| 8) Accessories | : Quick Guide, Hand Strap, miniSD Adapter, USB 2.0 Hi-Speed Extension Cable |

3. Using Method

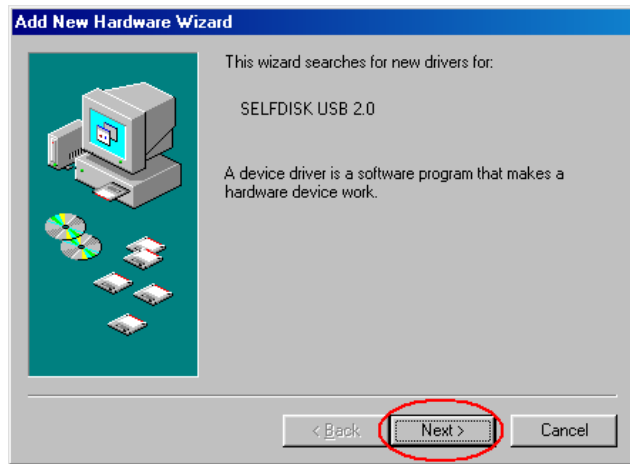
(1) WINDOWS 98SE

In circumstance of Windows 98SE, All USB products need device drivers.

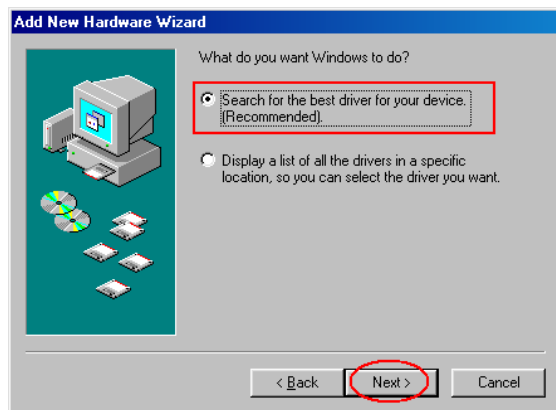
1> Installation of Windows 98SE

– While initial connecting, [Add New Hardware Wizard] dialog box will show up on your screen.

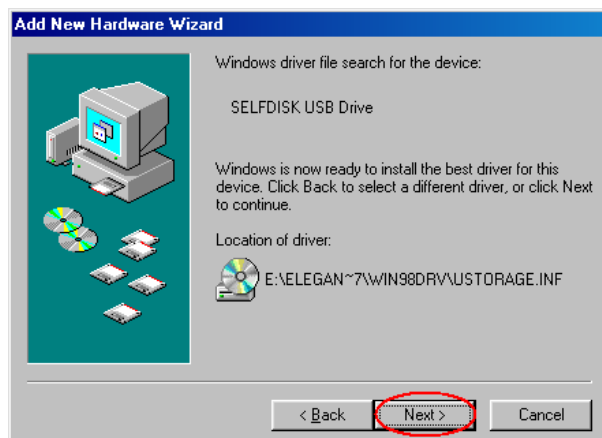
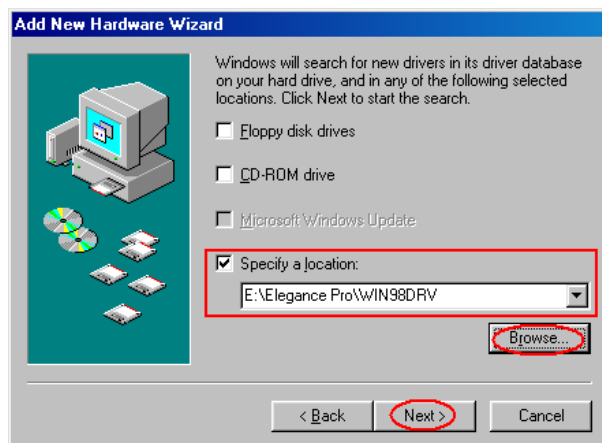
Then please click [Next] button.



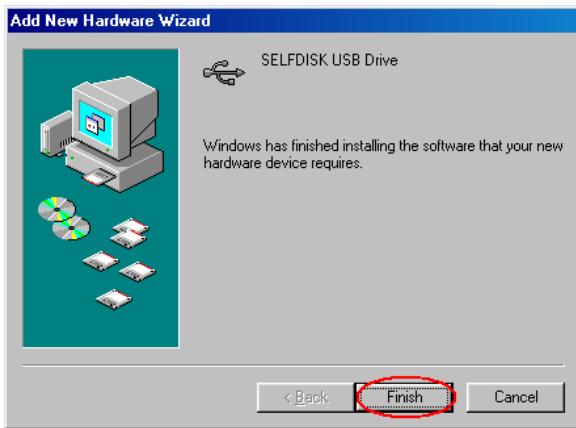
– Please click [Search for the best driver] and click [Next].



– On [Specify a location], click [Browse], then select driver



- Click [NEXT], then computer look for the device drivers and finish the installation.



(2) WINDOWS ME / 2000 / XP/ 2003

1> Installation

When CARD READER is connected to PC at first, initializing time (10~15sec) is required. Please do not separate CARD READER from PC during initializing.

2> Separating CARD READER from PC

While LED is not flickering, please select the icon “Unplug or Eject Hardware” and operate it before separating CARD READER from PC.

(3) Mac OS

1> Installation

Once connected to PC, HDD icon is displayed on desktop screen. After this recognition, it shall be used as a portable storage device easily. (In case of Mac OS 8.6, Please download drivers in <http://www.apple.com>)

2> Separating CARD READER from PC

Please move the Icon to Recycle Bin to separate CARD READER from PC.

4. Notice

To avoid fire or electric shock, please note followings in advance to use.

- While inserting cards to CARD READER, please follow right direction.
- After use, please separate CARD READER from PC.
- Please do not disassemble and remodel.
- Please keep away from humidity.
- Please use CARD READER only for compatible cards (MMC, RS-MMC, SD, miniSD Card) in card slot.

In case of connecting other cards, it can be mal-operated.

- In case of mal-operation, please do not use and contact seller.

If you have any further query or problem for SELFDISK CARD READER, we are willing to support at anytime.

Thank you so much !

Http://WWW.SELFDISK.COM

E-mail : selfdisk@selfdisk.com