

User's Guide

Model:LC0901D

Please read carefully before use.

1. Introduction.....	1
1.1 Thank You.....	1
1.2 Warnings And Cautions	1
1.3 MID Accessories Introduction	2
2. Introduce MID	3
2.1 Appearance And Accessories.....	3
2.2 Physical picture	4
2.3 MID state and notice	5
Iconography for notification	5
3. Getting Started Guide.....	6
3.1 Battery Charging	6
Power adapter	6
Way to charging battery	6
3.2 Getting Started	6
Turn the MID on.....	6
Turn the MID off	7
3.3 Turn The Screen On And Off.....	7
3.4 Unlocking The Screen.....	8
3.5 Use of touch screen.....	8
Setting mode in MID	8
Click to select.....	8
Press on	8
Slide quickly or slide	9
Drag	9
Rotate	9
3.6 Homepage Interface	9
Outstretched homepage interface.....	10
Change desktop wallpaper	10
Add widgets	11
3.7 Access to application program	11
How to visit application program of MID:	11
3.8 USB connection.....	12
Storage setting of MID.....	12
Copy the document to storage card	12
Content of MID storage device.....	13

3.9 Memory card	13
Copy the document to storage card	13
Delete documents on the storage card of MID.....	13
Removing storage card when the MID is in starting up state	13
3.10 Character input	14
Use screen keyboard	14
Select the input method you need to use	14
Use and switch input method	14
3.11 Application Technique	15
Open the application procedure that is employed recently.....	15
Add the small tool on the desk	15
Switch of Input Language	16
Factory Default	16
Rapid Screenshot	16
Speedily Set Such Functions as Fly Mode	17
4 Connection Establishment	18
4.1WIFI Connection	18
5 Communication.....	19
5.1E-mail	19
Setting for E-mail	19
Setting guide for E-mail	19
Delete the E-mail account.....	20
Send E-mail information.....	20
6 Multi-media	21
6.1 Supported File Format	21
6.1 Music	21
Visit and play the music	22
Add the songs onto the new play list	22
Delete the play list.....	22
6.2 Camera	23
Camera functions	23
Videotape function	23
6.3 HDMI.....	24
HDMI High-definition video interface	24
6.4 Media Browser	24
View pictures	25
Edit and set the picture.....	25

Video preview and playback	26
7 Internet	27
7.1 Browser	27
Enter Homepage	27
Change your Home Page	27
Visit web page	27
Browse the webpage	28
Zoom in or zoom out webpages	28
Find texts within the webpage	28
Manage bookmarks	28
Use browser window	29
8 Other Applications	30
8.1 GPS	30
8.2 Alarm clock	30
8.3 Calculator	31
8.4 File Management	31
Browse files	31
Cut and copy files	32
Delete files	32
Folder setup	32
Quick search	32
Create sharing	33
9 Basic Settings	34
9.1 Sound and Display	34
Volume setting	34
Screen key tone and screen lock alert tone	34
Display settings	34
9.2 Security and Location	35
Set unlock pattern	35
Other settings	36
9.3 Storage	36
View storage settings	36
Safe uninstall of SD card	36
9.4 Date and Time	36
Adjust the date, time and time zone	36
9.5 Language and Input Method	37

Select language for the device.....	37
Keyboard and input method.....	37
9.6 About Tablet PC	37
View MID status.....	37
System Update	37
View system version	38
10 Installation and Management of Program	39
10.1 Installation	39
Install third-party applications	39
10.2 Management and Uninstall	39
Management applications	39
Uninstall applications	39
10.3 Update Approach	40
11 System Upgrade	41
11.1 System Upgrade Preparation	41
Download upgrade program.....	41
System Upgrade Preparation:	41
11.2 Restore Factory Settings	41
12 Troubleshooting	42

1. Introduction

1.1 Thank You

We want to thank you for choosing the D5H-98V. We sincerely hope our products can give your life to bring happiness, from which to enjoy the charm of fashion and technology.

The information contained in this manual are correct the date of publication. However, due to our R & D constantly updated and improved products, software, appearance and functionality of the products you have described in this manual is slightly different. Please prevail in kind.

1.2 Warnings And Cautions

This manual contains important safety measure and the correct use of products to the information, please read this manual carefully before using the product.

✦ Please keep the device dry. Please don't let the device or charger contact water 、 water vapor or operate device or charger with wet hand, so as not to result in short circuit of the device, breakdown caused by corrosion and electric shock of personnel.

✦ Please do not place the device in an area where it is high temperature, humid or dusty.

✦ Please don't let the device receive strong impact or shock. Avoid the LCD display panel from experiencing forces of extreme vibration, or it can result in display panel malfunction.

✦ Please charging regularly in order to avoid the battery to excessive consumption caused the damage.

✦ Please don't use MID when you are driving.

✦ In medical places, please observe relevant stipulations and regulations and shut down MID.

✦ Please shut down MID or enable the airplane mode when boarding, so that the wireless signals will not interfere control signal of the airplane.

✦ Please don't dismantle the MID and its accessories on yourself, and only the authorized agency can maintain this MID.

✦ Please keep MID far away from magnetic equipment, radiation from MID will erase information stored on the magnetic equipment.

✦ Please put MID and its accessories in places beyond children's touch, please don't let children use MID without supervision.

✦ During using of this MID, please observe related laws and regulations, respect privacy and legitimate rights of others.

✦ Please strictly abide by relevant explanations in this manual when using USB data line, otherwise, MID or personal computer may be damaged.

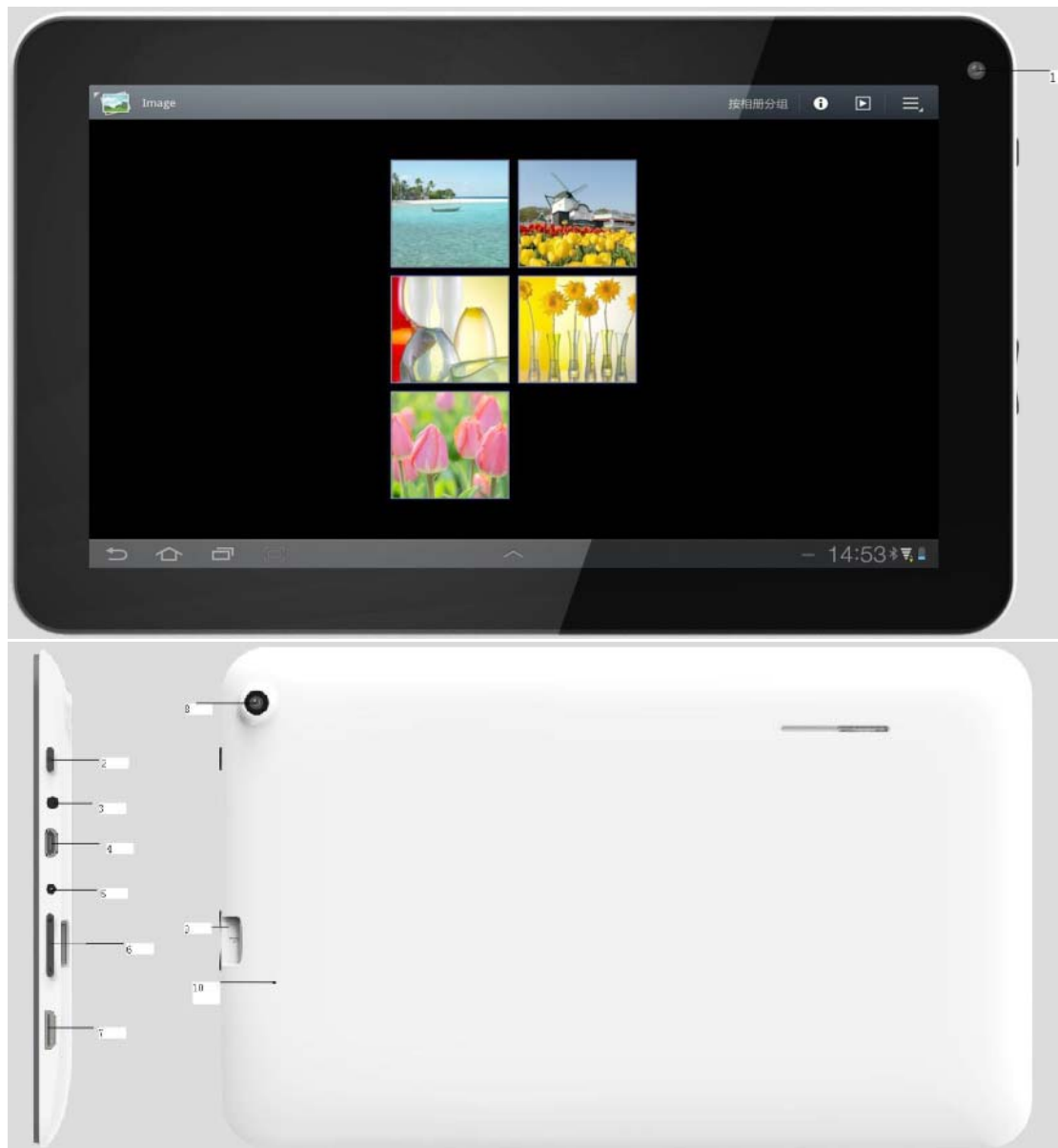
1.3 MID Accessories Introduction

Below items are included in your MID package, please confirm:

- ✦ MID complete device
- ✦ power adaptor
- ✦ USB cable
- ✦ User's manual
- ✦ Warranty Card
- ✦ Qualification certificate of product

2. Introduce MID

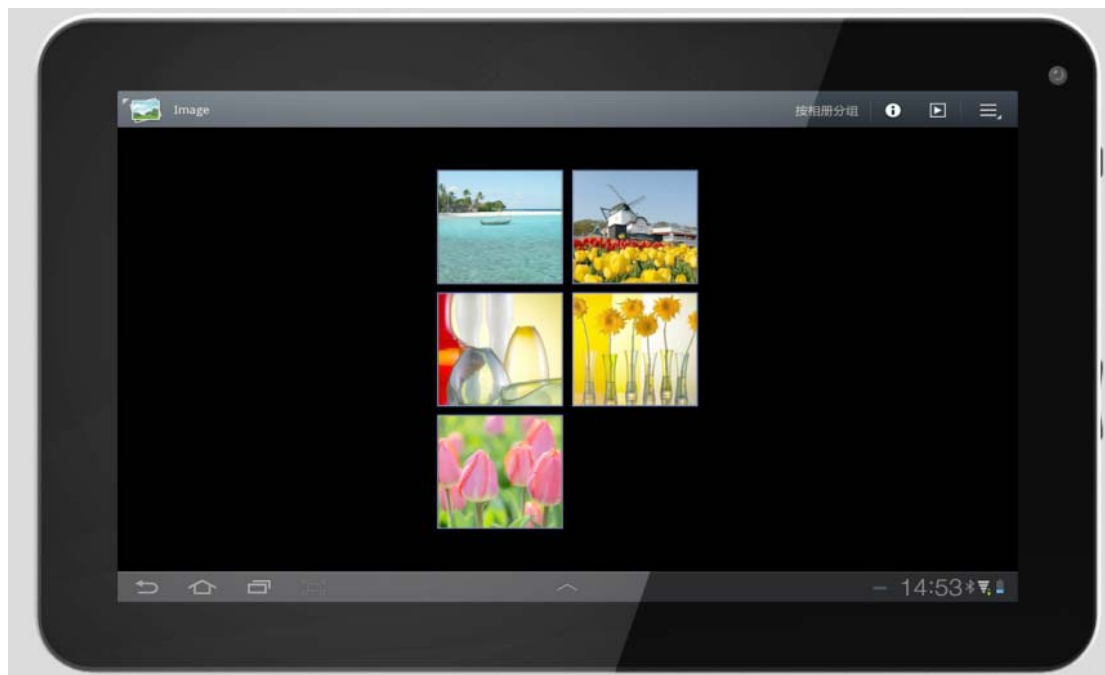
2.1 Appearance And Accessories



No.	Name	Description
1	Camera	0.3 MP Front-facing camera.
2	Power key	Press to turn the device on, or to turn the screen on and off. Press and hold to access the power off menu.
3	Earphone port	
4	Mirco USB	T Using Mirco –USB to USB data can be tablet can be connected to the computer as device.
5	DC input	Used for connecting charging cable for charging the device battery.
6	Vol +/-	To decrease/ increase the volume.
7	HDMI port	High definition multimedia interface
8	Camera	2 MP rear camera.
9	Micro SD card slot	Slot to insert the micro SD card
10	Reset port	High definition multimedia interface.
11	Speaker	Sound output.

2.2 Physical picture

The following picture is D5H – 98V physical picture.



2.3 MID state and notice

Iconography for notification

When a prompt message shows on your notice panel, please click the column box and slide on the screen with your finger to open the notice list. Click options needing to check to see detailed information. Then you may click the message box and slide upwards to close the message window. The following are iconography for icons in status bar:

	Back button		Home button
	Display recently-used application		Screenshot button
	Hide status bar		CPU mode setting
	USB connected		Micro SD card
	Wifi		Battery
	Menu		New email
	Downloading		

3. Getting Started Guide

Statement: The company has committed to quality, while software update. If the final version of products has any difference from description of the user guide, please subject to the final product. Thank you!

3.1 Battery Charging

MID has an internal charging battery. We suggest to charge up the battery power is low.

Power adapter

One end of the power adapter connecting the socket, and the other end of the power adapter connecting the socket of the device, then the device can be charged.

Way to charging battery

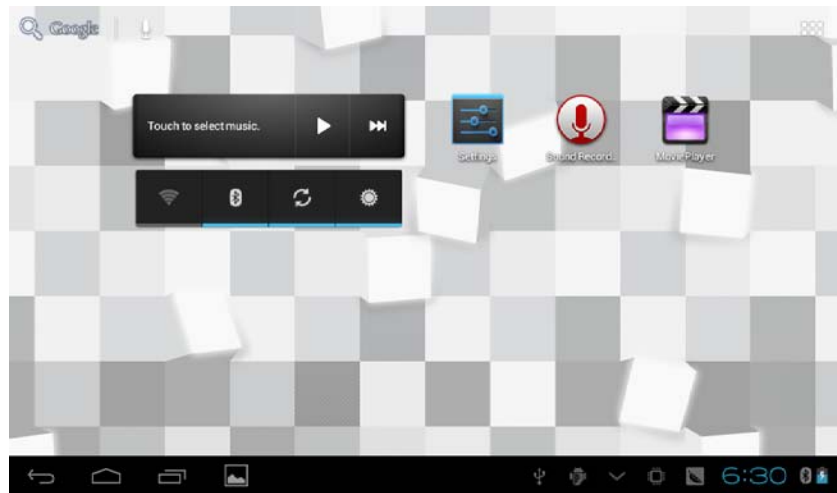
1. Plug in the power adapter, the battery charging indicator turn red, indicating charging. Plug when the battery is fully charged, the indicators shows green. After unplug the power adapter, the indicator always shows green.
2. During battery charging, user can operate MID.

Note: The charging time will be longer when operating and charging at same time.

3.2 Getting Started

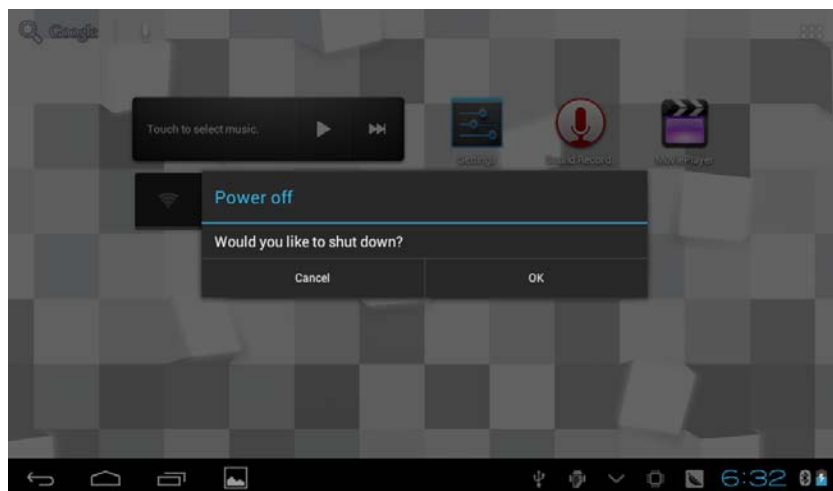
Turn the MID on

Press and hold the **Power Key** until the LCD screen turns on. Wait until the Home screen appears. The tablet is now ready for use.



Turn the MID off

1. Press and hold the **Power Key** until the MID options menu appears.
2. Press **ok** to turn off the MID.



3.3 Turn The Screen On And Off

When the MID is on, you can turn off the screen to conserve battery power. Simply press the **Power Key** once to turn the screen off. Press the **Power Key** again to turn the screen back on.

Note: To conserve battery power, the screen can be set to turn off automatically when the MID is not in use (between 15 seconds).

3.4 Unlocking The Screen

When the screen turns off you will have to unlock the screen, touch and hold **lock icon** and slid towards **unlock icon**.



3.5 Use of touch screen

Setting mode in MID

There are various ways to skim the main screen, menu and application program, etc. on your MID.

Click to select

When you want to use screen keyboard entry, and you want to select items on the homepage interface such as application program, you only use your finger to click.

Press on

If you want to unlock the available option of a certain item (such as textbox or interlinkage in the webpage), or move shortcut on the homepage

interface and menu of main program, only press the item.

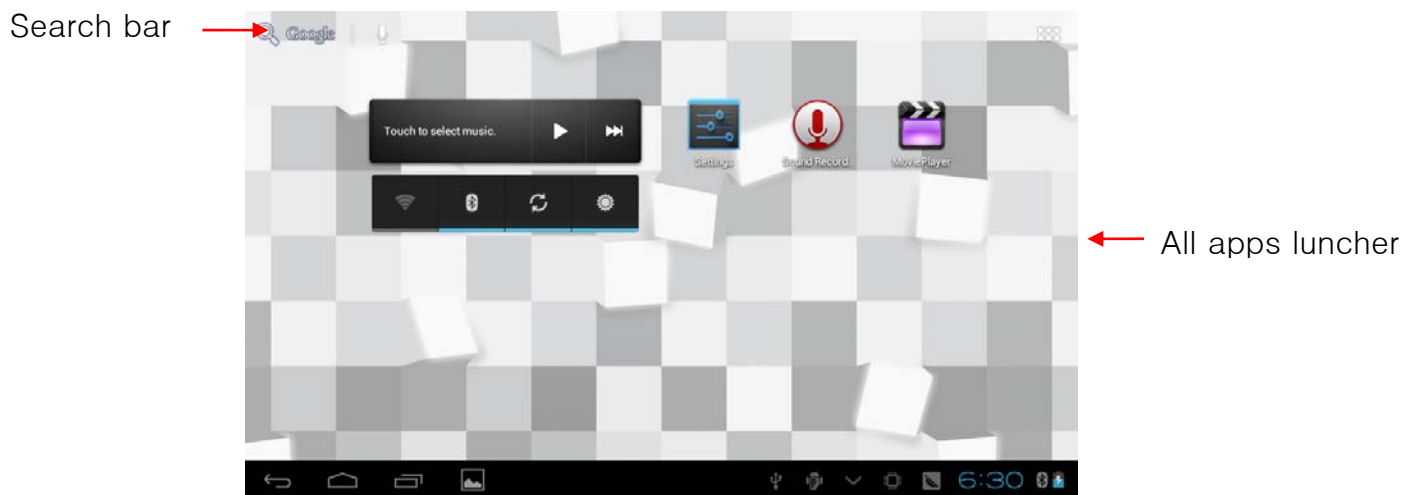
Slide quickly or slide

Quick sliding or sliding means doing rapid vertical or horizontal drag movement by using finger on the picture.

Drag

Before you starting to drag, you must press it with your finger and impose a certain pressure, and don't loosen the finger before dragging to the wanted position.

Rotate



Aiming at most of pictures, only turn the MID in side direction, the screen direction can be shifted from cross direction to vertical direction. For example, when you input characters, watch cinema, etc.

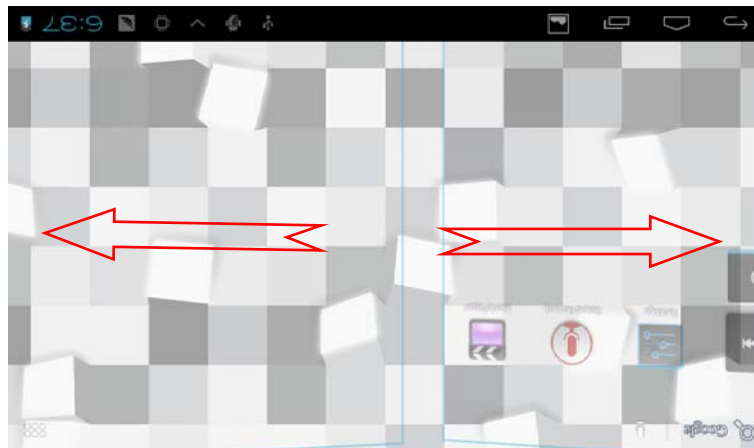
3.6 Homepage Interface

All application programs on the machine will be displayed on the main

menu screen. You may use application program, shortcut and user-defined mode to set wallpaper of your homepage interface.

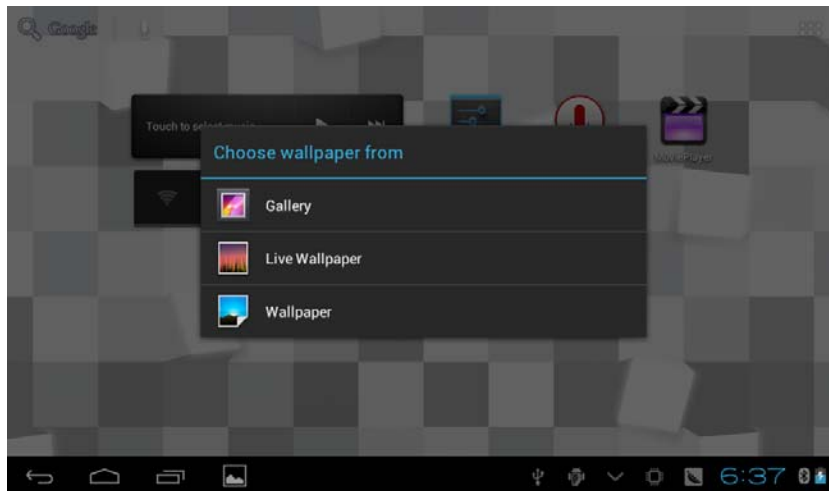
Outstretched homepage interface

Homepage interface may extend beyond the width of screen, so as to provide more space, so that you can place the newly increased shortcut, widget, etc. Press blank of homepage interface, then slide around quickly in vertical direction by finger to jump to left side or right side outside the screen. There are more than 2 stretched pictures on the homepage interface.



Change desktop wallpaper

1. Long press the screen.
2. When the menu popping up, choose source of homepage interface wallpaper you want to change.

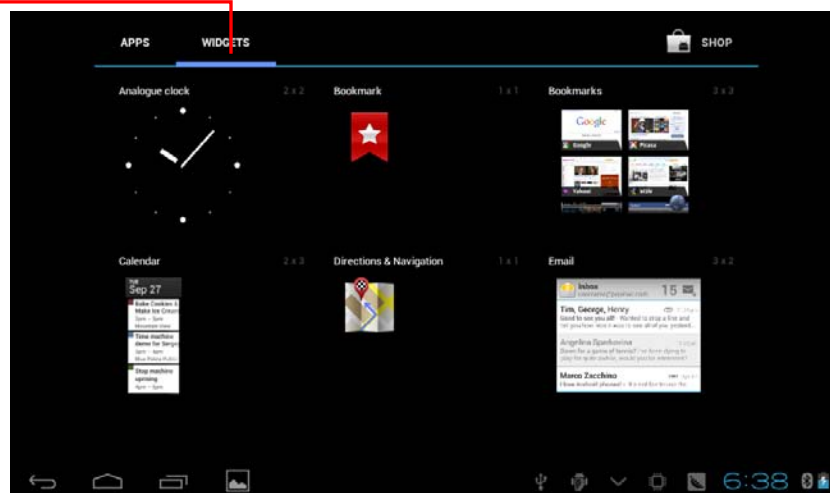


3. After clicking source of wallpaper, click picture you want, and then select “setting wallpaper”.

Add widgets

1. Please click application program menu.
2. After entering application program menu, click “WIDGETS” button on the top left of interface.
3. After pressing the desktop widgets you want, the system will return back main interface, put the selected widget to the wanted place, then loose .

Widgets



3.7 Access to application program

How to visit application program of MID:

1. Please click application program menu. As shown in Figure 3–5.
2. Select the application program you want to visit.
3. If you want to exit the program interface, press the return key to the

last interface, or press the homepage key to return homepage interface directly.

Apps



3.8 USB connection

Storage setting of MID

Before transmitting document, you must set storage mode for your MID

firstly:

1. Connect MID with computer by using USB transmission line. Notice bar will show the notice prompt.
2. Click status bar, options of status bar show.
3. Among options of status, click to choose **USB connected**, then click to open USB storage device.
4. At this time, USB has already been connected.

Copy the document to storage card

1. Connect MID and computer together with USB cable.
2. After **setting** according to **storage of MID**, connect with computer successfully.
3. Open your computer, in **my computer**, examine content in "removable disk (x)".
4. Find the document you want to copy, copy it to "removable disk(x)".
5. After completion of copying, click "safely remove hardware" in taskbar of your computer to unload.

Content of MID storage device

1. NAND FLASH storage device, space for MID to store document itself.
2. TF removable memory card.
3. The two above-mentioned storage devices both can be visited through connection with your computer with USB.

Note: when your MID is connected with USB cable, if you start up USB storage device, you will cannot visit the memory card through MID, if you want to visit memory card in MID, only disconnect USB cable.

3.9 Memory card

Copy the document to storage card

You can transmit document between MID and computer, such as music and picture, etc. If you want to see documents in MID, only click the file browser to look through content in the SD card.

Delete documents on the storage card of MID

1. Find document you want to delete.
2. Press the document name you need to delete, a file menu will pop up.
3. Click **delete**.

Removing storage card when the MID is in starting up state

If need to remove storage card under starting up state of MID, you must unload the storage card firstly, for fear of failure or damage of the storage card.

1. In the homepage interface, press the menu key, then click **setting**.
2. Pull the setting menu downwards, then click **storage**.
3. Click **SD card setting**.

4. Click to **uninstall the SD card**.

3.10 Character input

Use screen keyboard

When you start the program or select text edit box needing to input characters or numbers, screen keyboard will show. The following input methods are provided for the keyboard to select.

1. Android keyboard
2. Input method of a third party (user can install them by himself).

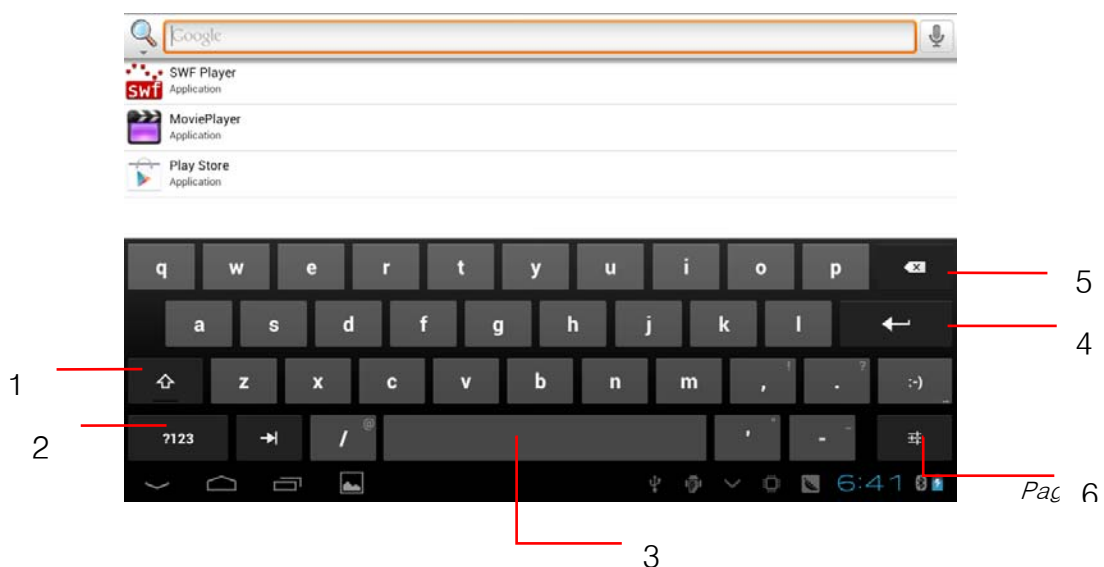
Select the input method you need to use

According to presetting, MID will display Android keyboard when you want to input characters.

1. Press menu key in homepage interface, then click **setting**.
2. Click **language** and **keyboard**.
3. All of the input methods already installed on your MID will be listed in the text setting region.
4. Select the input method you want..

Use and switch input method

1. In the character input interface, click keyboard icon under the status bar, until popping up of editing text menu.
2. Select input method you need.

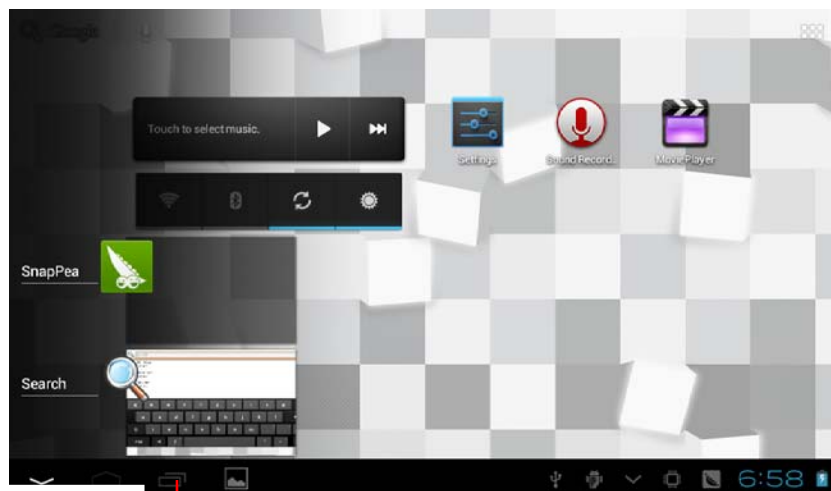


1	Switch input capital and small letters
2	Switch character input mode and symbol/figure input mode
3	Click to insert space
4	Click to execute carriage return
5	Click and press on to delete characters on the left of the cursor
6	Click here to switch input method

3.11 Application Technique

Open the application procedure that is employed recently.

Click the third button under the lower left side at any procedure interface, pop up the procedure windows on the screen, the application procedure that is used recently can appear in the windows, referring to Figure .



Application procedure

Add the small tool on the desk

On the application procedure menu, click “WIDGETS” button and enter into the interface of small parts, the icon and name for added small parts

can appear on this interface, such as: music, photo frame, clock and searching.

Switch of Input Language

Click the keyboard icon at the lower right corner of interface for input box; after clicking, pop up all input methods installed on this equipment by you, click and select the Input method.

Rapidly shut off the procedure

Click the Back Key to return to the superior interface, or click the Homepage key to return to homepage interface.

Factory Default

When your MD produces the major error or the unlocking password is forgotten, the Factory Default can be employed to return to the ex-factory status. There are two kinds of methods of setting the Factory Default:

1. On the homepage interface, click the menu key and pop up the setting menu.
2. Click and select the **Setting**
3. Click and select the **Backup and Reset**
4. Click and select the **Factory Default**
5. Click and select the **Tablet Computer Resetting**
6. Wait for system resetting

Rapid Screenshot

When you are located on such any interface as Game or Movies and intend to serve the wonderful picture as the commemoration, the desired pictures can be reserved only by pressing Volume Down key and Power key simultaneously.

Speedily Set Such Functions as Fly Mode

Click the status bar on the lower right corner of interface, pop up two windows, there are some prompt messages for your equipment on the windows below. Click the windows above and enter into the setting for Fly Mode, WIFI, G-sensorSwitch, Volume Control and Backlight Regulating and speedy operation for Setting Function .

4 Connection Establishment

4.1 WIFI Connection

Your MID can be connected onto Wi-Fi network to connect the operation:

1. On the homepage interface, click and select the meun key and pop up the meun setting;
2. Click and select the **System Setting**;
3. Click Wi-Fi and open wi-fi switch;
4. After opening Wi-Fi, the searched Wi-Fi network can be scanned automatically from the equipment in the windows on the right.
5. Select the Wi-Fi network required to be connected, if the password is added, pop up the password input windows and input the corresponding password.
6. Click the **Connection**

Click here and select WiFi network

Advanced Wifi setting option



5 Communication

5.1 E-mail

Setting for E-mail

The E-mail application procedure is attached with the setting guide for E-mail, the external POP3 or IMAP E-mail account for common Web E-mail service provider (such as: Yahoo, Gmail, Hotmail and 163 manufacturers) can be added.



Setting guide for E-mail

1. After clicking and selecting the E-mail icon, the produced E-mail setting guide will help you perform the setting;
2. Click and select **Next** button;
3. Input **E-mail address and password** of your E-mail account;
4. Click and select **Next** button to select that your E-mail type either is POP3 or IMAP.
5. Click and select **Next** button again to inspect whether the send-receive server of E-mail is available.
6. Input the name of account and display the name of E-mail to be sent, and then, click and select **OK**.
7. If the E-mail is available, automatically enter into your inbox.

Delete the E-mail account

You can delete the account of POP3 or IMAP E-mail that is set properly from your mobile phone.

1. Click and select the **E-mail**;
2. Enter into your inbox;
3. Click the menu key;
4. Click and select the **Account**;
5. Press the account that you want to delete.
6. Pop up the menu list; click and select the **Deleted Account**.
7. Click **OK** to remove it.

Send E-mail information

1. Click and select the **E-mail** to show your inbox.
2. Click inbox to enter, automatically refresh the new e-mail, click and read it.
3. Press down the menu key and pop up the menu.
4. Click and select the **Composing** to enter into the new E-mail interface;
5. Input the E-mail address of your recipient in the recipient bar;
6. Input the theme and information contents;
7. If want to add the attachment, press the menu key and pop up the menu option.
8. Click and select the **Add Attachment**.
9. Select the attachment that you will send (such as: picture and video).
10. After clicking and selecting the “**Send**”, send out the E-mail.

Notice: if you have more than one account and hope to send out a E-mail in certain account, prior to clicking the main menu and composing the E-mail, click that account name in advance.

6 Multi-media

6.1 Supported File Format

Your MID can play the following formats:

Music File Format

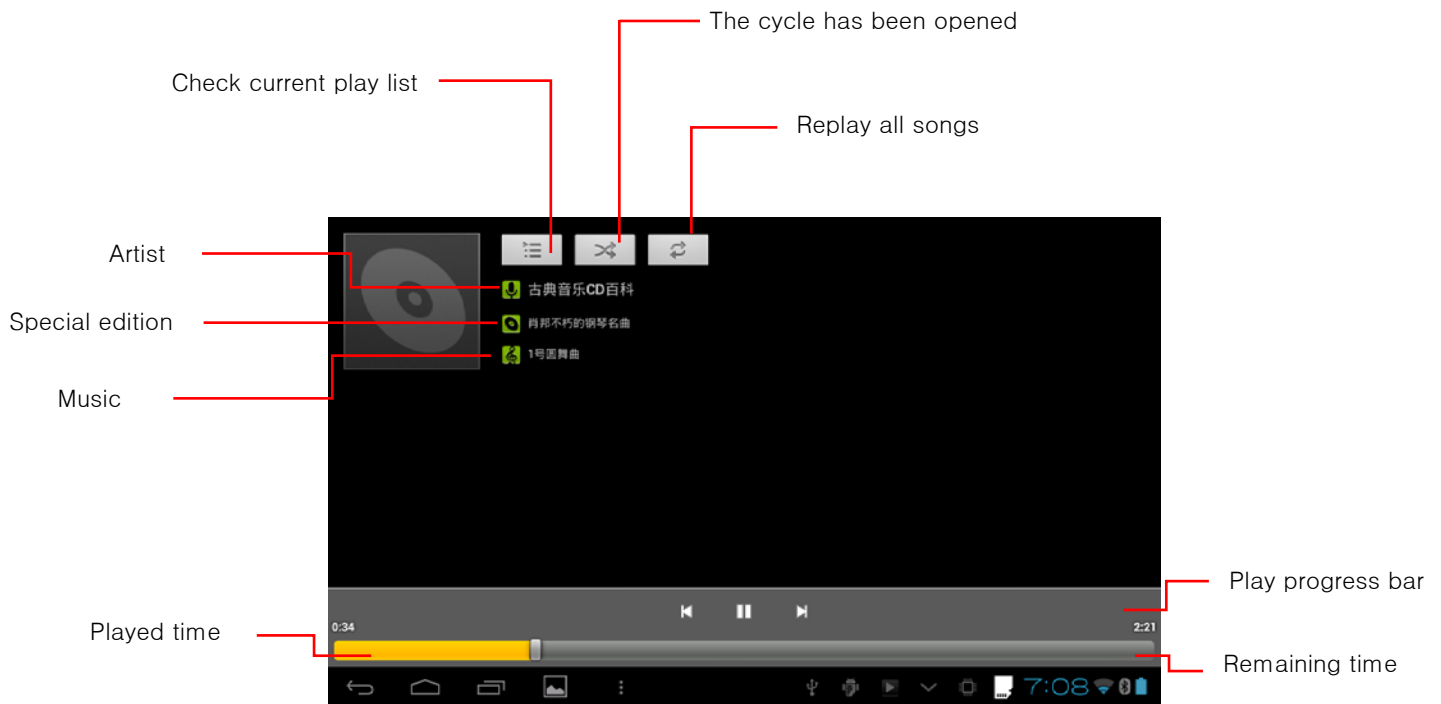
- ◆ MP3
- ◆ AAC(AAC、AAC+、AAC-LC)
- ◆ OGG
- ◆ MIDI
- ◆ WAV

Video Play Format

- ◆ AVI(H.264、DivX、XviD)
- ◆ RM/RMVB
- ◆ MKV
- ◆ WMV
- ◆ MP4
- ◆ VOB
- ◆ FLV
- ◆ 3GP

6.2 Music

Your music can be divided into such 4 types as Artist, Special Edition, Songs, Play List and Playing. select a classification to view the contents in the list therein. If enter into one classification, always perform the selection until appear the songs that you want to play. For example, if you select Artist classification, you will see the name list of artists ranked according to A-Z sequence. If select an artist, the special edition of artist and song list for special edition will be presented in the list.



Visit and play the music

1. Click and select the music;
2. Click and select the **songs**, click and select the **Artist, Special Edition and Song List**.
3. Select one of songs for play.

Add the songs onto the new play list

1. Click and select the music;
2. Click and select the **songs**,
3. Press the songs that you will add onto the play list ;
4. Pop up the music setting menu, click and select **add onto the play list**.
5. Click and select the **Newly-established**;
6. Input the name of play list;
7. Click and select the **Save**;
8. Click and select certain song, serve this song as the ring to be added.

Delete the play list

1. Click and select the music;
2. Click and select the **songs**,
3. Press the songs that you will add onto the play list ;

4. Pop up the music setting menu, click and select **Delete**.

6.2 Camera

Camera functions

1. Click and select the **camera**;
2. The system enters into the camera interface;
3. Click and select the Photo button and easily take the photos;
4. Set such functions as photo size, storage location, white balance and focal length regulating;
5. After completion of taking photo, there is the display for previewed mini-map.

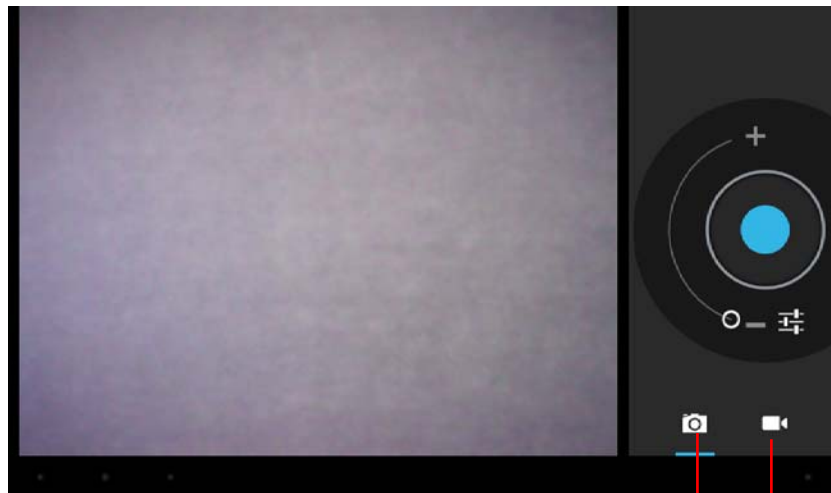
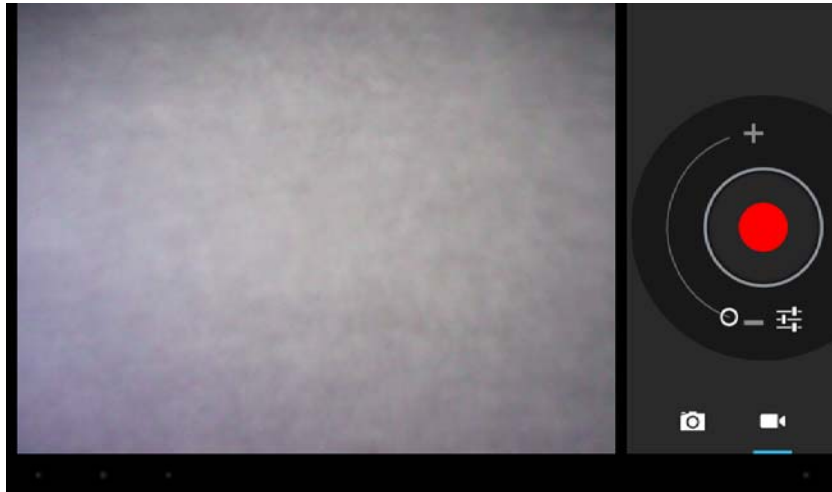


Photo function

Videotape function

Videotape function

1. Click the videotape icon and convert it as video recorder mode;
2. Click and select the red videotape button to take video ;
3. Set such setting functions as color effect, white balance and video quality;
4. Switch 720P and 480P high-definition video recording.
5. Click and select the video recording button, end the video recording, and observe the previewed video.



6.3 HDMI

HDMI High-definition video interface

The MID and the high-definition television are connected by a standard HDMI cable. This interface supports the picture with highest quality of 1080p resolution ratio.

4. MID is in the boot status.
5. The MID and the high-definition television are connected by a standard HDMI cable.
6. The system interface on MID is automatically synchronized with the high-definition TV screen.
7. Click **Display** in the settings menu.
8. Click **Output Select** to switch HDMI mode.
9. Click **Resolution** to set the resolution ratio of HD TV.

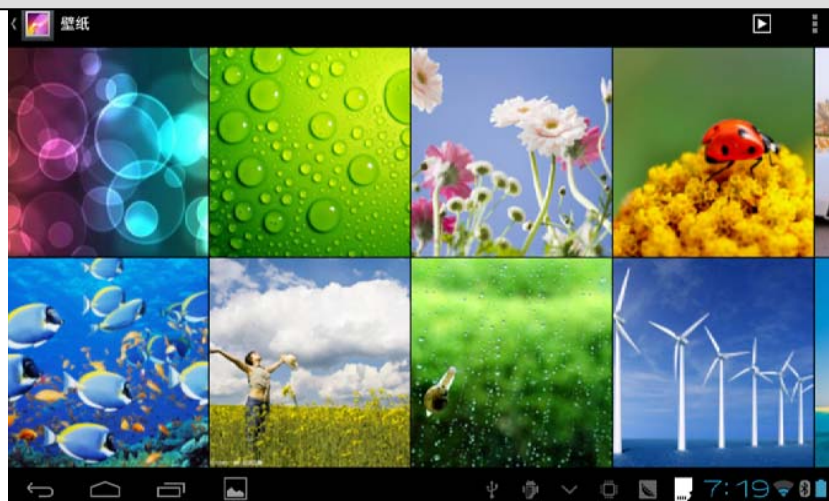
6.4 Media Browser

The media browser application capable of automatically searching and classifying all photos and video files in the MID and the TF card in accordance with the folder can be used to view and edit photos, to use photos as desktop and to watch videos.

View pictures

1. Click the folder containing the pictures that you want to see.
2. Select the picture you want to see, and the system will automatically view in full screen mode.
3. Drag the picture to left or to right to browse the previous or the next picture.
4. Double-click the picture to zoom in or zoom out the picture.

Tips: the picture browser is capable of automatic rotation. When the MID is rotated, the picture will automatically adjust along with the rotation direction.



Edit and set the picture

When view the pictures in full screen mode, press the Menu key to show the menu options, through which the pictures are edited and set.

- **Slide show**

Press the Menu key to show the menu options, and then click **Play slideshow**, which shows the pictures in all folders.

- **Share**

1. Press the Menu key to show the menu options, and then click **Share**.
2. The picture will be shared with your friends through the

attachments in the **E-mail** and **Bluetooth**.

- **Rotation**

1. Press the Menu key to show the menu options, and then click **Rotation**.
2. Click **Rotate to left** or **Rotate to right**.

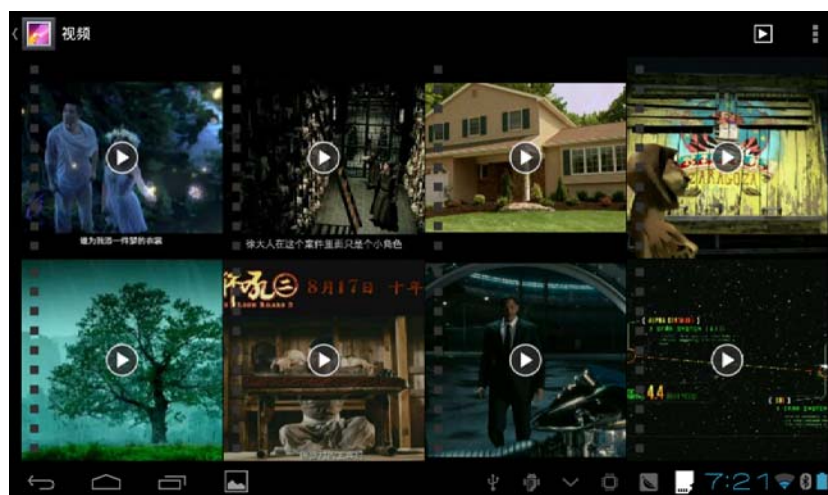
- **Cut**

1. Press the Menu key to show the menu options, and then click **Cut**.
2. Click and drag relevant area to adjust the cutter.
3. Click and drag the cutter to adjust the size.
4. Adjust the size and click **Save**.
5. Click **Return** to go back to the picture browse.

Video preview and playback

The Media Browser will scan all video files in the MID and TF card, and preview the playable ones. Click one to play the video files.

In the video preview interface, press the Menu key, and the function window of editing video files appears.



7 Internet

7.1 Browser

Enter Homepage

The browser always opens the last web page that the user has visited, and the home page will appear after clicking the browser.

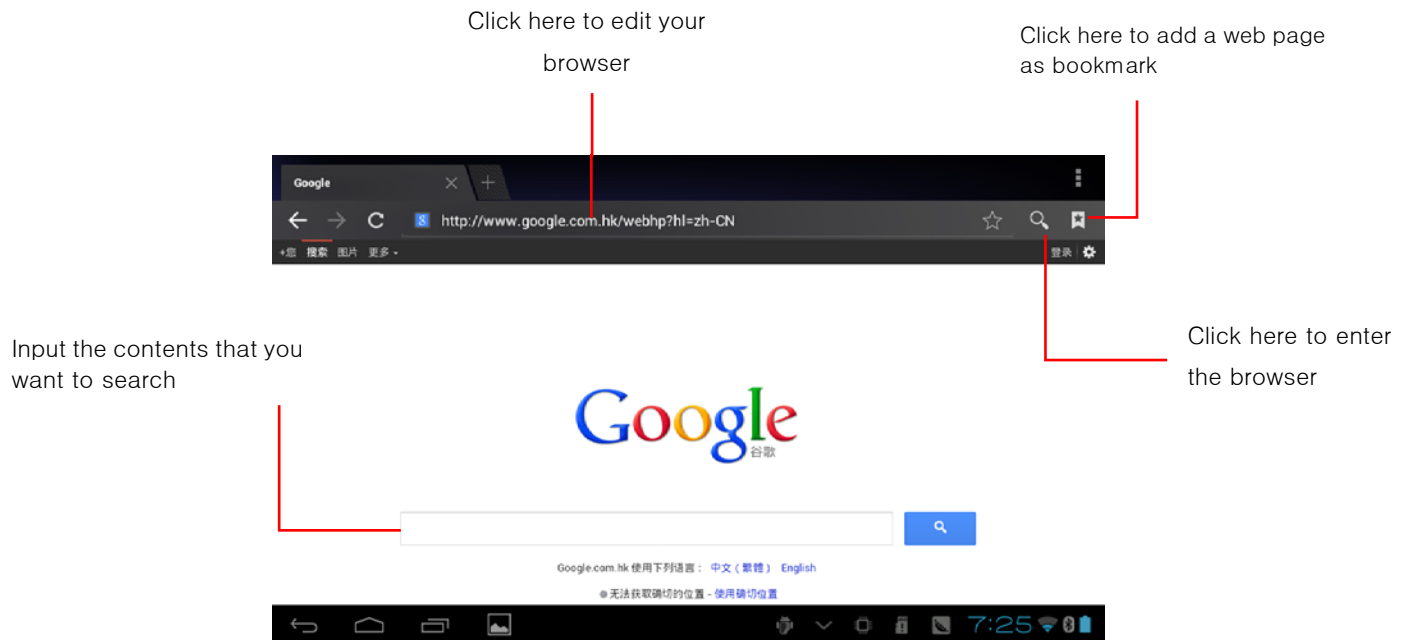
Change your Home Page

1. Click **Browser**.
2. Press the **Main menu button** to pop up browser setting menu.
3. Click **Settings**.
4. Click **Set Home page**.
5. Enter URL and Click **OK**.



Visit web page

1. Click **Browser**.
2. Enter your URL in the address bar.
3. Click **Start** on the soft keyboard.



Browse the webpage

When the page finishes loading, you can slide your finger to browse and view other parts of the page.

Zoom in or zoom out webpages

The webpage can be zoomed in or out by double-clicking the screen or by dragging through two fingers.

Find texts within the webpage

1. While browsing the web, press the Menu key to pop up the menu options.
2. Click **Find on web**.
3. Enter the item you want to search.
4. The matched texts are highlighted in green while inputting the characters.
5. Click left-to-right arrow before the search bar to move to the previous or the next matched word.

Manage bookmarks

- **Set web page bookmark**
 3. Go to certain web page in the browser interface.

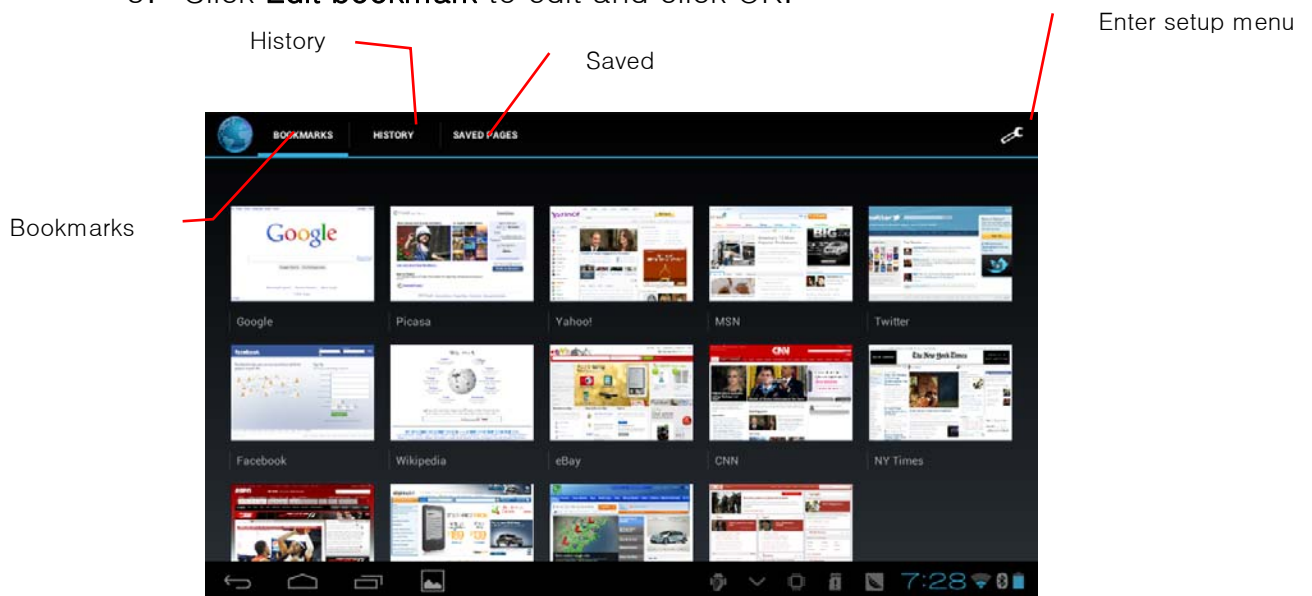
4. Click the icon 'Click here to add a web page as bookmark' in Fig. 7-2, and a **Bookmark this page** window pops up, click OK to set the page you want as the bookmark.

- **Open bookmark**

1. Enter the interface similar to the following picture by clicking the icon 'Click here to enter the Manage bookmarks' as in fig. 7-2 in the browser interface.
2. Click the bookmark that you want to open the web page.

- **Edit bookmark**

1. Enter the interface similar to the following picture just like opening the bookmark in the browser interface.
2. Click and press down the bookmark to open the menu options.
3. Click **Edit bookmark** to edit and click OK.



Use browser window

- **Open a new browser window**

1. In the browser window, press the Menu key and click **New window** or simply click the + at the top of the address bar to open a new window.

- **Switch browser window**

1. In the browser window, the pages you have visited appear above the address bar.
2. Click the window that you want to switch to the page you want.

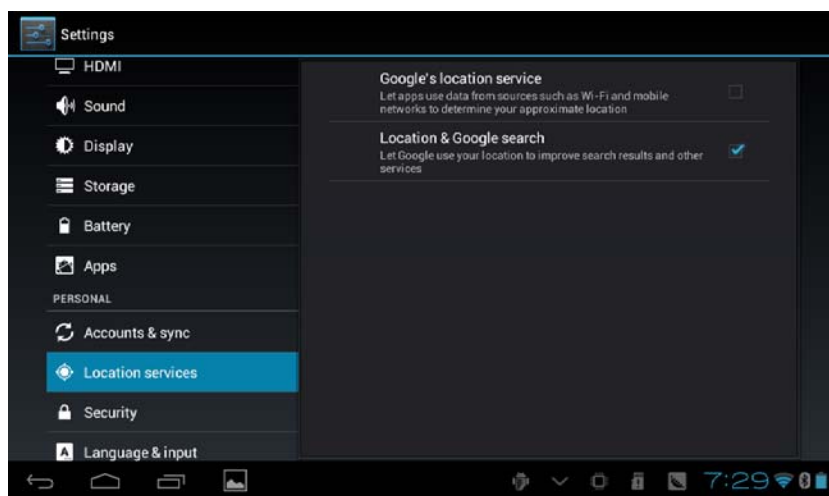
- **Set browser**

In the browser interface, press the Menu key and click **Set** to set the browser.

8 Other Applications

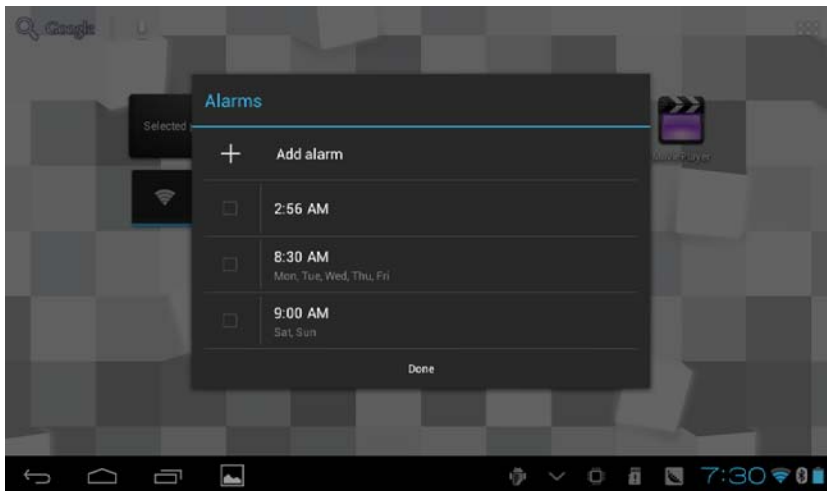
8.1 GPS

1. Pop up settings menu by pressing the Menu key in the main interface.
2. Click **Settings**.
3. Click **Location Services**.
4. Click **Using GPS satellite to load GPS**.
5. Install the third-party search GPS satellite application or mapping programs for positioning and navigation.



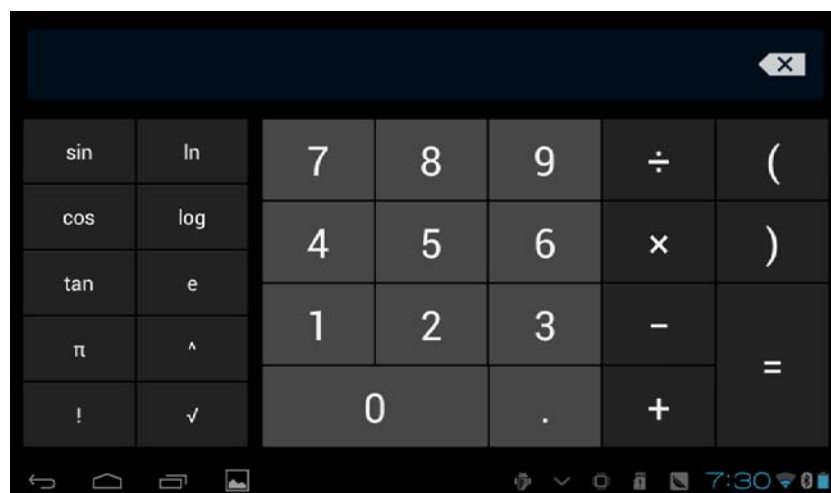
8.2 Alarm clock

1. Click clock icon in the main interface.
2. Enter program interface. (Fig. 8-2)
3. Click the time periods need to set, and the alarm setup menu pops up.
4. After setup, click **Done** on the corresponding clock.



8.3 Calculator

1. Click **Calculator**.
2. Enter the basic panle of the calculator to operate.

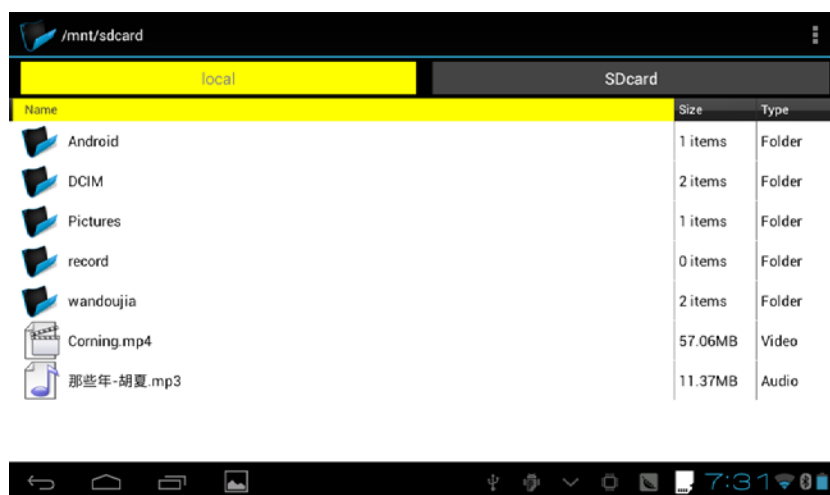


8.4 File Management

Browse files

Slide the desktop to locate the File browser.

You can use the file browser to manage, edit and delete the files and folders, or to create sharing and FTP server to achieve resource sharing.



Cut and copy files

1. In the file browser, press and select the file you want to operate.
2. Pop up operating menus, including **Cut**, **Copy**, **Delete**, **Rename**, **Move to**, **Copy to**, **Play music**, **Select all**, **Set home directory** and **Attributes**, etc.
3. Click **Cut** or **Copy** file or folder.
4. Click into the folder you want to paste, and pop up menu by pressing the Menu key.
5. Click **Operate** and then click **Paste**.

Delete files

1. In the file browser, press the file you want to delete.
2. Click **Delete**.
3. Click **OK** to delete file.

Folder setup

1. In the file browser, pop up menu by pressing the Menu key.
2. Click **Create**.
3. Click **Folder**.
4. Click pop-up window and input the name of the new folder in the text box.
5. Click **OK** to create the folder.

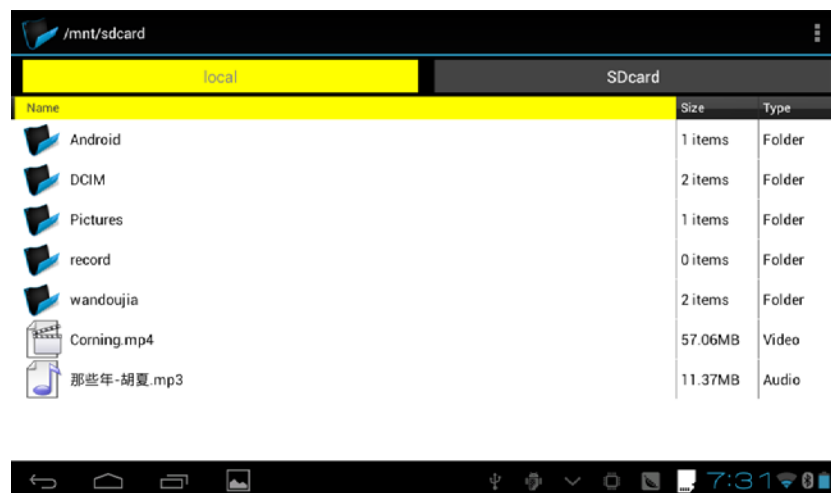
Quick search

1. In the toolbar of the file browser
2. Click **Search icon**.

3. Pop up the search panel and enter the keywords you need to find.
4. Click **OK** and the search progress bar will appear in the notification bar.
5. When the search is completed, pop up the dialog box to confirm whether to show the results.
6. Click **OK** to show the search results.

Create sharing

1. Load ES file browser.
1. Click '**Local**' at the upper left corner and select '**Share**' in the pop-up window.
2. Click the menu bar 'Create', and select '**Search**' in the pop-up window .
3. The system will automatically search all the computers within the LAN, and each drive of your computer can be seen by clicking OK.
4. You can **Copy, Delete, Rename** here.



9 Basic Settings

9.1 Sound and Display

Volume setting

1. Click the application icon to enter the settings application on the Homepage.
2. Click **Sound**.
3. Click **Volume** to control the volume of the ringtones, media, alarm clock and notification.
4. Pop up volume setup panel, and control it by dragging the progress bar to left or to right.

Screen key tone and screen lock alert tone

You can set the MID to emit sound when you use the soft keyboard or touch screen as well as lock the screen.

1. Click the application icon to enter the settings application on the Homepage.
2. Click **Sound**.
3. Click the **Screen key tone and screen lock alert tone**.

Display settings

● **Adjust screen brightness**

1. Click the application icon to enter the settings application on the Homepage.
2. Click **Display**.
3. Click **Brightness**.
4. Pop up the brightness setup panel, and drag the brightness bar to left or to right to adjust the brightness.
5. Click **OK**.

● **Adjust screen standby time**

1. Click the application icon to enter the settings application on the Homepage.
2. Click **Display**.
3. Scroll down the screen and then click **Sleep**.

4. Pop up screen standby time settings and choose the standby time you want.

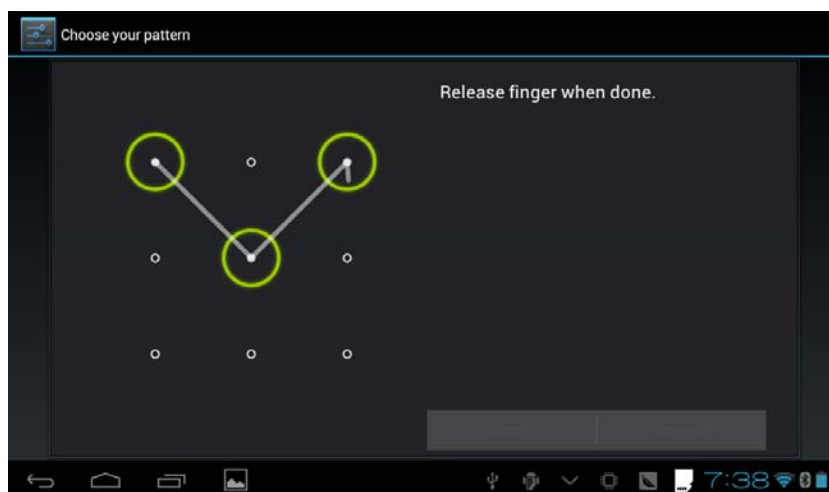
9.2 Security and Location

Set unlock pattern

You can set your own unlock pattern (equivalent to the password) to protect the privacy of your MID.

1. Click the application icon to enter the settings application on the Homepage.
2. Click **Security**.
3. Click **Set screen lock**.
4. Click **Pattern**.
5. Pop up unlock pattern panel with 9 contacts, at least four of which are connected vertically, horizontally or diagonally. Put fingers away from the screen upon completion and the system will record the pattern you set.
6. Click **Continue**.
7. Draw the screen unlock pattern again when the prompt appears and click OK.

Tips: If you do not want the unlock graphics display on the screen while unlocking, please clear the check box of Use visible pattern.



Other settings

In the security settings, functions such as encryption setup, equipment management and credential storage can be added to the tablet PC.

9.3 Storage

View storage settings

1. Click the application icon to enter the settings application on the Homepage.
2. Click **Storage**.
3. View storage space of SD card.
4. View storage space of NAND FLASH.
5. View Scsi setup, which is the storage space of U disk.

Safe uninstall of SD card

Safe removal of the SD card can effectively protect and prolong the service life of the SD card.

1. Click the application icon to enter the settings application on the Homepage.
2. Click **Storage**.
3. Click **Uninstall SD card**.
4. The system prompts that the SD card is safely removed.

Tips: the uninstall method for Scsi is as described above.

9.4 Date and Time

Adjust the date, time and time zone

1. Click the application icon to enter the settings application on the Homepage.
2. Scroll down the screen and then click the **Date and time settings**.
3. Click **Select time zone** to select the one you want. Scroll down the list to see more time zones.
4. Click **Set date**, then click the up button or the down button to adjust the date, month and year, and click **Settings** when finish.
5. Click **Set time**, then click the up button or the down button to adjust hours and minutes, click AM or PM to change between morning and

afternoon. Click Settings to complete.

6. Select 24-hour check box to switch between 12-hour and 24-hour. Selected time format will be applied to the alarm clock.
7. Click **Select date format** and then select the date format to be displayed on the MID.
8. You can choose **Automatically determine date and time**, which automatically uses the time from the network, so effective network is required.

9.5 Language and Input Method

Select language for the device

1. Press the Menu key to pop up Settings menu on the Homepage.
2. Click **Settings**.
3. Click **Language and Input Method**
4. Click **Select language areas** and choose the language you need.

Keyboard and input method

The default input keyboard is the Android keyboard, and you can select your favorite keyboard and input method by installing third-party software.

9.6 About Tablet PC

View MID status

1. Click the application icon to enter the settings application on the Homepage.
2. Click **About Tablet PC**.
3. Click **Status Message** to view the **Battery status**, **Network status**, **Bluetooth address**, **Serial number** and **Running time**, etc.

System Update

1. Click the application icon to enter the settings application on the Homepage.
2. Click **About Tablet PC**.
3. Click **System Update**.

4. If the window shows this is the latest version, there is no need to update.
5. If the window prompts to download the new version, click **Download**. (Ensure the device is equipped with the TF card before download, the system automatically downloads the update package into TF)

View system version

1. Click the application icon to enter the settings application on the Homepage.
2. Click **About Device**.
3. View **MID model**, **Android version**, **Firmware version** and **Build-in version**, etc.

10 Installation and Management of Program

10.1 Installation

Install third-party applications

You can get third-party applications fit for the Android system from the Internet and for use on the MID. Copy the application to the SD card and insert into the MID.

Method 1:

1. Click **File Manager** to find the applications need to install in the SD card.
2. Click the applications that you want to install.
3. Pop up installation option and click **Install**.
4. Operate after completion in accordance with the installation guide.

Method 2:

You can download and install your favorite third-party software according to the Method 1, and after that, you can install the software you want through this software.

Note: search files with the suffix of .apk for the third-party programs from the Internet

10.2 Management and Uninstall

Management applications

You can enter the applications and select one to Forcibly stop, Clear data, Uninstall, and Remove storage location.

Uninstall applications

1. Click the application icon to enter the settings application on the Homepage.

2. Click **Applications**.
3. Click **Management applications**, and list all the applications installed in the system.
4. Click **Uninstall**.
5. Click **OK** to complete uninstall.

10.3 Update Approach

Update Android system applications

- Download the latest application from our designated websites.
- Download through the relevant forums about Android system software from the Internet.
- Download through the software shops installed in the MID.

11 System Upgrade

11.1 System Upgrade Preparation

Download upgrade program

You can download the software upgrade package from websites, which is used to upgrade the system version of the MID.

System Upgrade Preparation:

1. Download the system upgrade package from relevant websites to your computer.
2. Prepare the system upgrade tool: a TF card with storage capacity $\geq 512\text{MB}$.

11.2 Restore Factory Settings

When significant error occurs or the unlock password is forgotten, factory settings can be restored by resetting. The restore of the factory settings will lead to the lost of downloaded applications and user setups, so do remember to back up your data.

1. Press the Menu key to pop up Settings menu on Homepage.
2. Click **Settings**.
3. Click **Backup and Reset**.
4. Click **Restore Factory Settings**.
5. Click **Restore Tablet PC**.
6. Wait for system rebooting.

12 Troubleshooting

1. slow initial boot for MID

After system upgrade of MID, initial boot needs installation of the pre-installed software applications, and for about 2–3 minutes, it runs faster.

2. MID can not be connected to WIFI

- Ensure that the wireless router providing the network services works properly.
- Ensure the MID and the wireless router are kept with certain distance, and between which no wall or other obstacles exist.
- Ensure the user name and the password are correct

3. MID feels hot

When multiple applications are running at the same time, or the screen is adjusted to the brightest, or it is recharging, this situation is normal.

4. System is disordered and does not work properly

Installation of some third-party applications may lead to system failure, and you can press the reset button (next to the power port) to reset the system.

5. Unable to create e-mail or regist applications

- Ensure your network is properly connected to the Internet.
- Ensure the e-mail is set up correctly.
- Ensure your system time and the local time are consistent.

Appendix 1
Specification Product Parameter

Type	Details	Descriptions
Basic parameter	MID model	D5H-98V
	CPU type	Amlogic Cortex-A9 AML8726-M6
	CPU speed	1.5GHz
	DDR	1GB
	NAND FLASH	8GB (8GB/16GB/32GB optional)
	Operating system version	Andriod 4.0.3
	Network connections	WIFI802.11b/g/n MINI USB switch to Ethernet Network
	USB interface	MINI USB*1 HOST
	HDMI interface	HDMI 1.4a
	battery	Lithium-ion polymer battery, 3.7V/3200mAH
	Power adapter	Input: AC 100V-240V; output: DC 5V, 2.5A
	External memory card	Support SDHC/SDXC
Product appearanc e	Product form	Straight plate
	LCD	10.0inch (16:9),1024*600 HD IPS
	Dimensions	25.1*16.4*10.8mm
	Weight	370g
Applicati on	Vedio	Support MPEG,H.263/H.264,RMVB,MVC,etc. (UP TO 1080P)
	Audio	Support MP3,WMA,WAV,OGG,APE,DTS,etc. (need license)
	Games	Support to the third party programs
	Input method	Andriod keyboard
	photos	Support browsing BMP, JPG, GIF, PNG,etc.
	Office software	Support reading and editing office files;Support browsing PDF

FCC Warning

This device complies with Part 15 of the FCC Rules. Operation is subject to the following two conditions:

(1) this device may not cause harmful interference, and (2) this device must accept any interference received, including interference that may cause undesired operation.

NOTE 1: This equipment has been tested and found to comply with the limits for a Class B digital device, pursuant to part 15 of the FCC Rules. These limits are designed to provide reasonable protection against harmful interference in a residential installation. This equipment generates, uses and can radiate radio frequency energy and, if not installed and used in accordance with the instructions, may cause harmful interference to radio communications. However, there is no guarantee that interference will not occur in a particular installation. If this equipment does cause harmful interference to radio or television reception, which can be determined by turning the equipment off and on, the user is encouraged to try to correct the interference by one or more of the following measures:

- Reorient or relocate the receiving antenna.
- Increase the separation between the equipment and receiver.
- Connect the equipment into an outlet on a circuit different from that to which the receiver is connected.
- Consult the dealer or an experienced radio/TV technician for help.

NOTE 2: Any changes or modifications to this unit not expressly approved by the party responsible for compliance could void the user's authority to operate the equipment.