

F C C - TEST REPORT

REPORT NO.: 46580

FCC – Test Report

Date: 2006-11-16

No. 46580

Page 2 of 21

**FCC listed testlab
acc. to Section 2.948 of the FCC - Rules
in compliance with the requirements of
ANSI C63.4 - 2003**

Product : Table Lamp

Product Class : Part 18 Consumer Device

Brand Name : Sharper Image Design

Model : SI561

Importer : SUN LUEN ELECTRICAL MFG. CO. LTD.

FCC – Test Report

No. 46580

Date: 2006-11-16

Page 3 of 21

TABLE OF CONTENTS

- 1. Cover sheet
- 2. Introduction
- 3. Table of Contents
- 4. Laboratory Report
- 5. Test Location and Summary of Test Results
- 6. Test Equipment List
- 7. Radiated Emission Test Configuration
- 8. Conducted Emission Test Configuration
- 9. Test Procedure
- 10. Test Results
- 11-14. Measurement Data – Conducted Emission
- 15-21. Photographs

FCC – Test Report

No. 46580

Date: 2006-11-16

Page 4 of 21

LABORATORY - REPORT

APPLICANT: SUN LUEN ELECTRICAL MFG. CO. LTD.

ADDRESS: 22/F., Wang Fai Ind. Bldg.
29 Luk Hop St.
San Po Kong, Kowloon
HONG KONG

DATE OF SAMPLE RECEIVED: 2006-10-26

DATE OF TESTING: 2006-11-01 to 2006-11-03

DESCRIPTION OF SAMPLE:

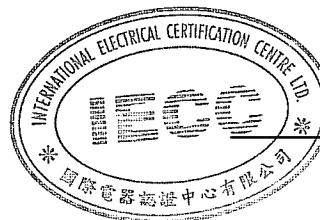
Product: Table Lamp
Product class: Part 18 Consumer Device
Brand name: Sharper Image Design
Model no.: SI561
Rating: AC 120V 60Hz 27W

CONDITION OF TEST SAMPLE: The received sample was under good condition. No modification was required on the samples for testing.

INVESTIGATIONS REQUESTED: Measurements to the relevant clauses of F.C.C. Rules and Regulations
Part 18 – Industrial, Scientific, and Medical Equipment

RESULTS: See the attached test sheets

CONCLUSIONS: From the measurement data obtained, the tested sample was considered to have **COMPLIED** with the requirements for the relevant clauses of Federal Communications Commission Rules as specified above.



Stephen Wong

Authorized Signature

FCC – Test Report

No. 46580

Date: 2006-11-16

Page 5 of 21

Test Location

International Electrical Certification Centre Ltd.
Unit 602-605, 31 Lok Yip Road, On Lok Tsuen, Fanling, N.T., Hong Kong

Summary of Test Results

Radiated Emission:

Test result: N.A.
Test data: N.A.

Conducted Emission:

Test result: O.K.
Test data: See attached data sheet

FCC – Test Report

Date: 2006-11-16

No. 46580

Page 6 of 21

TEST EQUIPMENT LIST

Equipment	Manufacturer	Model	Serial No.	Last Calibration Date	Next Calibration Date
Test Receiver	Rohde & Schwarz	ESHS 30	839667/002	18/11/2005	17/11/2006
Artificial Mains Network (LISN)	Schwarzbeck	NSLK 8127 / NNLA 8119	8127309	02/12/2005	01/12/2006
Impulse Limiter	Rohde & Schwarz	ESH-3-Z2	--	--	--

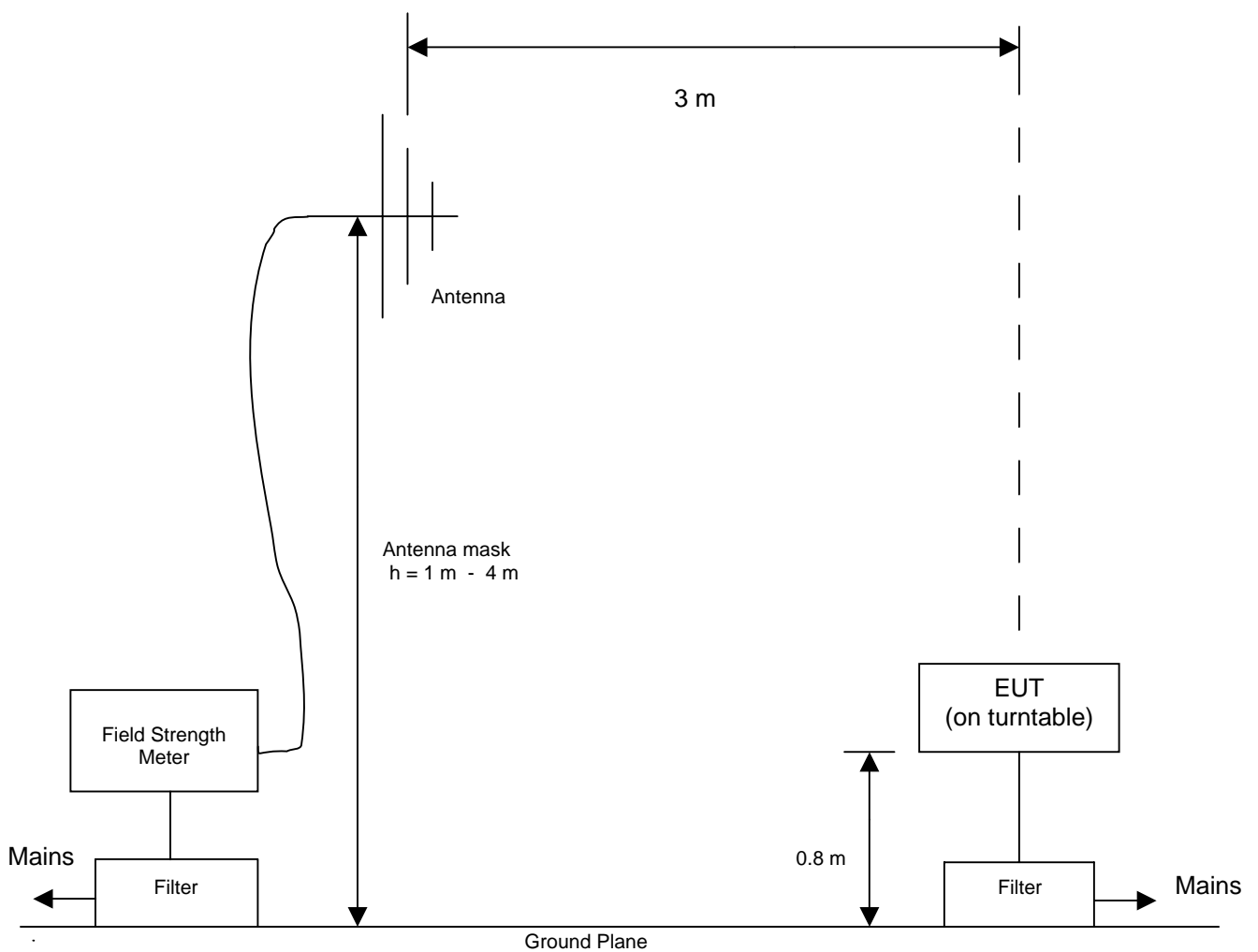
FCC – Test Report

No. 46580

Date: 2006-11-16

Page 7 of 21

Radiated Emission Test Setup (3 m distance) (> 30MHz)

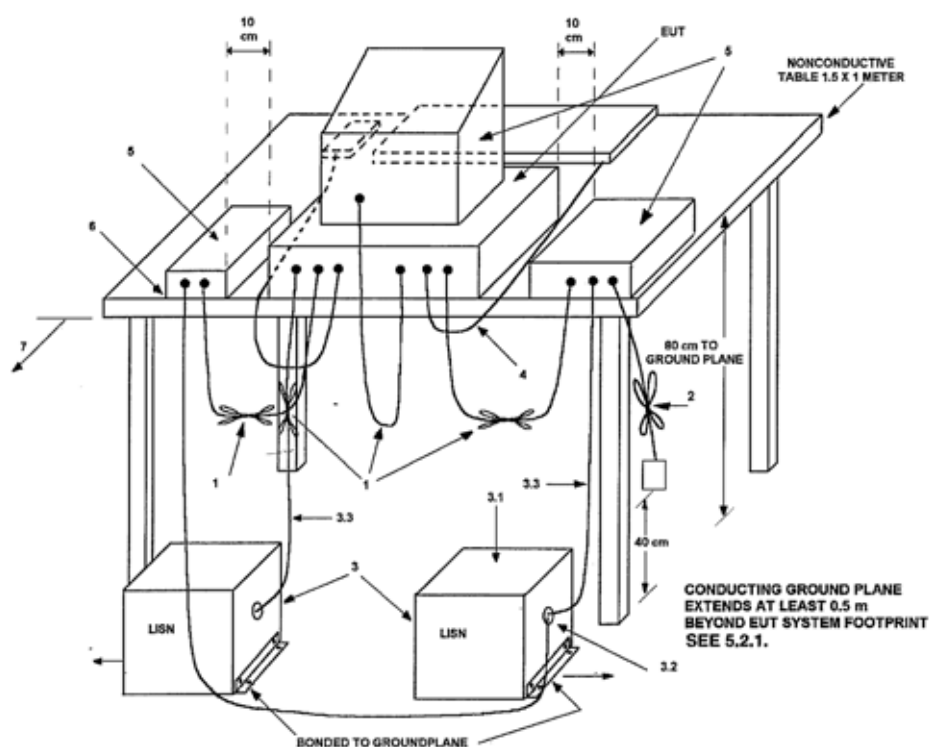


No. 46580

Date: 2006-11-16

Page 8 of 21

Conducted Emission Test Setup



LEGEND:

- 1) Interconnecting cables that hang closer than 40 cm to the groundplane shall be folded back and forth in the center forming a bundle 30 to 40 cm long (see 6.1.4 and 11.2.4).
- 2) I/O cables that are not connected to a peripheral shall be bundled in the center. The end of the cable may be terminated, if required, using the correct terminating impedance. The overall length shall not exceed 1 m (see 6.1.4).
- 3) EUT connected to one LISN. Unused LISN measuring port connectors shall be terminated in 50 Ω . LISN can be placed on top of, or immediately beneath, reference groundplane (see 5.2.3 and 7.2.1).
 - 3.1) All other equipment powered from additional LISN(s).
 - 3.2) Multiple outlet strip can be used for multiple power cords of non-EUT equipment.
 - 3.3) LISN at least 80 cm from nearest part of EUT chassis.
- 4) Cables of hand-operated devices, such as keyboards, mice, etc., shall be placed as for normal use (See 6.2.1.3 and 11.2.4).
- 5) Non-EUT components of EUT system being tested (see also Figure 13).
- 6) Rear of EUT, including peripherals, shall all be aligned and flush with rear of tabletop (see 6.2.1.1 and 6.2.1.2).
- 7) Rear of tabletop shall be 40 cm removed from a vertical conducting plane that is bonded to the groundplane (see 5.2.2 for options).

FCC – Test Report

Date: 2006-11-16

No. 46580

Page 9 of 21

Test Procedure

Radiated Emission :

According to Section 18.309, for products with operation frequency below 1.705 MHz, field strength measurements are conducted up to 30MHz. No field strength limits is specified in Section 18.305 for measurements below 30MHz.

In view of the above, since the test model is operated at 132 kHz, no field strength measurement is required.

Note : The Open Area Test Site located at IECC was placed on file with the FCC Pursuant to Section 2.948 of the FCC Rules (FCC Registration No. : 97774).

Conducted Emission :

The EUT was tested according to FCC Measurement Procedure MP-5 for the requirements of FCC Part 18 Subpart C Section 18.307.

During the test, the sample was placed on a wooden table and operated under various modes with supply at rated AC voltage (i.e AC120V 60Hz) via the LISN. The table is 0.8 meter above the floor. The LISN was connected to the test receiver for conducted emission measurement (450kHz – 30MHz).

FCC – Test Report

No. 46580

Date: 2006-11-16

Page 10 of 21

Test Results

Conducted Emission :

Test Requirement: FCC Part 18 Subpart C Section 18.307

Test Method: FCC Measurement Procedure MP-5

Frequency Range: 450kHz – 30MHz

Class: Class B

Detector: Quasi-Peak

Refer to page 11 - 14 for measurement data.

ISM 1/2

Interference Voltage 450 KHz - 30 MHz

acc. FCC PART 18 Subpart C Section 18.307(c)

Cabin 1

Model: SI561

Spl./Ser.No.: 01/--

Client : SUN LUEN ELEC.

Product: TABLE LAMP

IECC-No.: 46580

Date: 1 NOV 2006

Test equipment:

Rohde & Schwarz ESHS-30

Schwarzbeck NSLK8127

Connected sets:

TEST W/ USB LOAD

Operating mode:

OPERATE

(L)

TEST AT 120VAC /60Hz

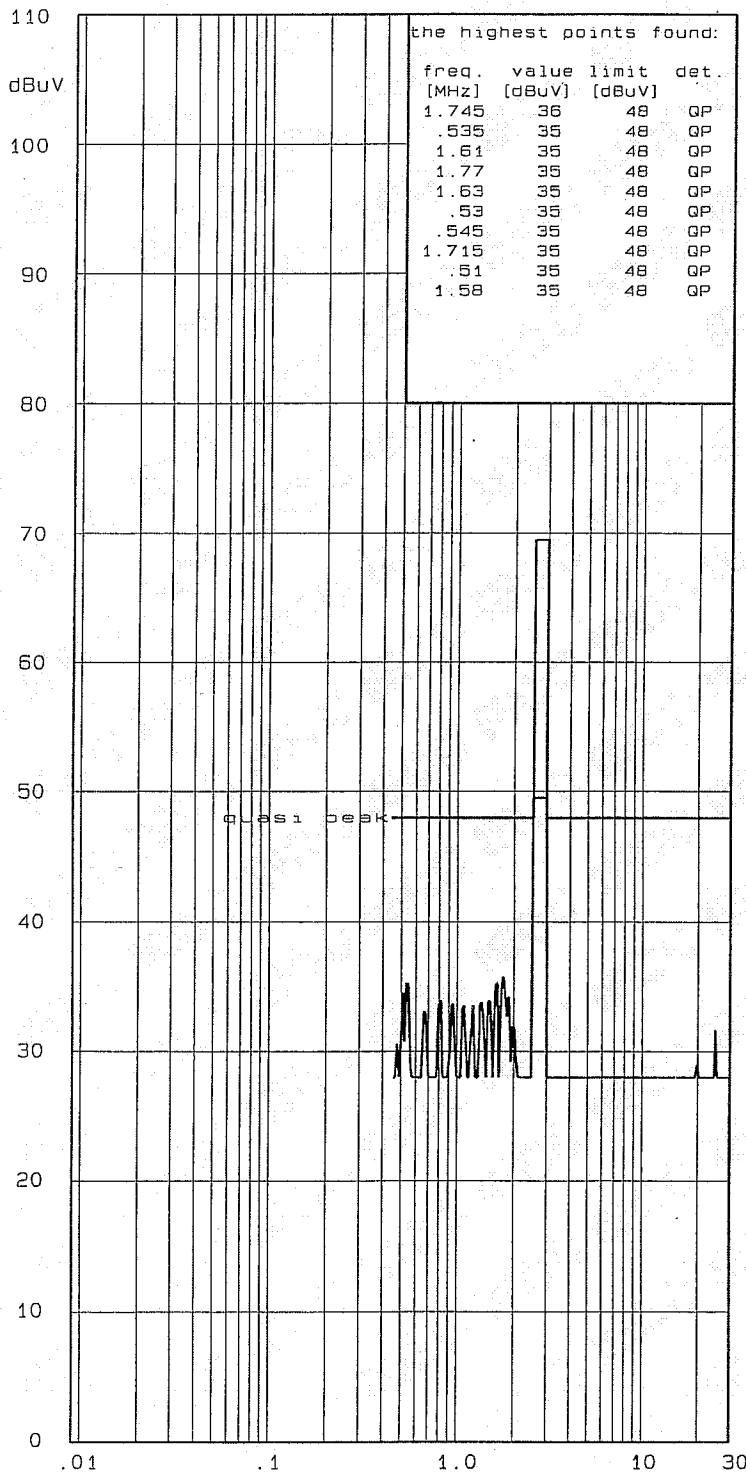
RFI suppression parts:

* two dB safety margin for
type approval necessary

Operator: KS

Result: OK

IECC



ISM 1 / 2

Interference Voltage 450 KHz - 30 MHz

acc. FCC PART 18 Subpart C Section 18.307(c)

Cabin 1

Model: SI561

Spl./Ser.No.: 01/--

Client : SUN LUEN ELEC.

Product: TABLE LAMP

IECC-No.: 46580

Date: 1 NOV 2006

Test equipment:

Rohde & Schwarz ESHS-30

Schwarzbeck NSLK8127

Connected sets:

TEST W/ USB LOAD

Operating mode:

OPERATE

(N)

TEST AT 120VAC /60Hz

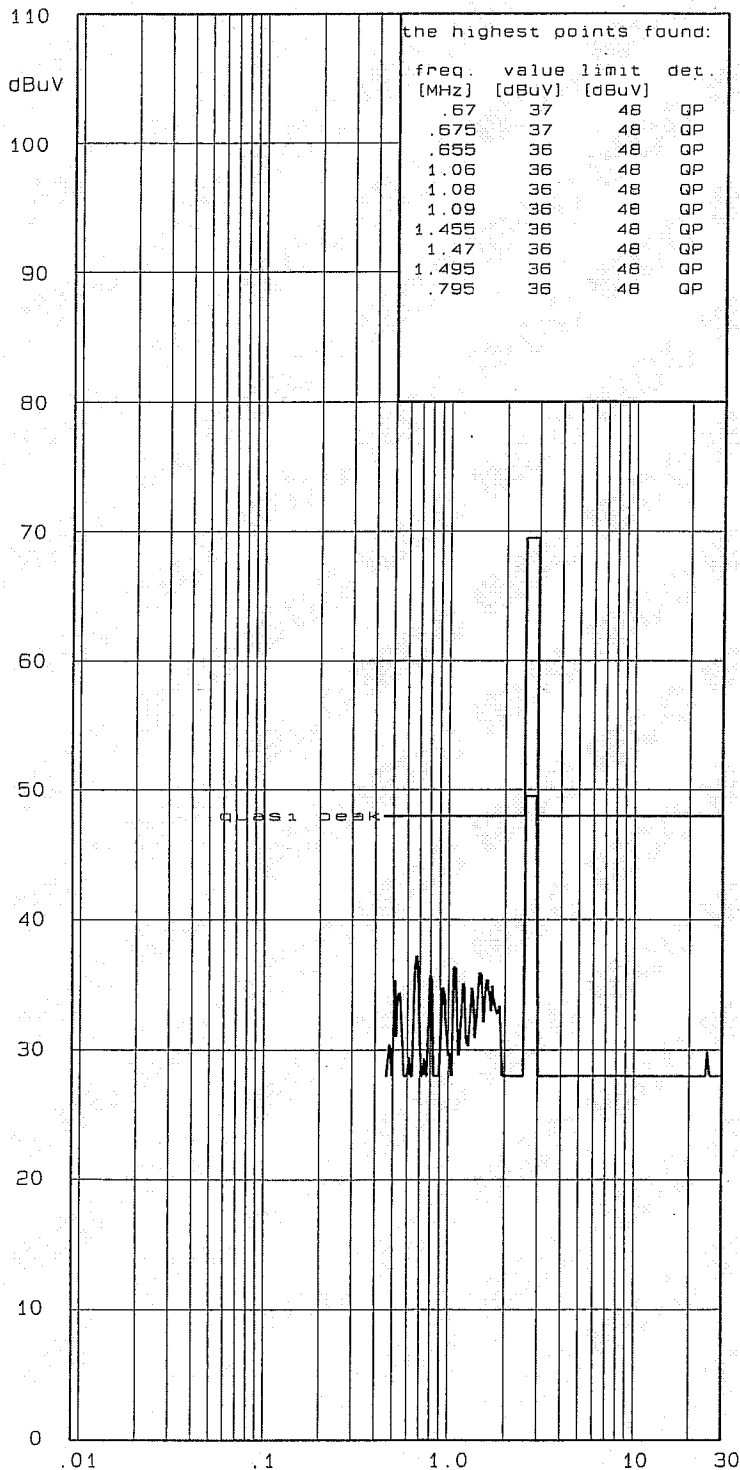
RFI suppression parts:

* two dB safety margin for
type approval necessary

Operator: KS

Result: *OK*

IECC



ISM 1/2

Interference Voltage 450 KHz - 30 MHz

acc. FCC PART 18 Subpart C Section 18.307(c)

Cabin 1

Model: SI561

Spl./Ser.No.: 01/--

Client : SUN LUEN ELEC.

Product: TABLE LAMP

IECC-No.: 46580

Date: 1 NOV 2006

Test equipment:

Rohde & Schwarz ESHS-30

Schwarzbeck NSLK8127

Connected sets:

TEST W/O USB LOAD

--

Operating mode:

OPERATE

(L)

TEST AT 120VAC /60Hz

--

RFI suppression parts:

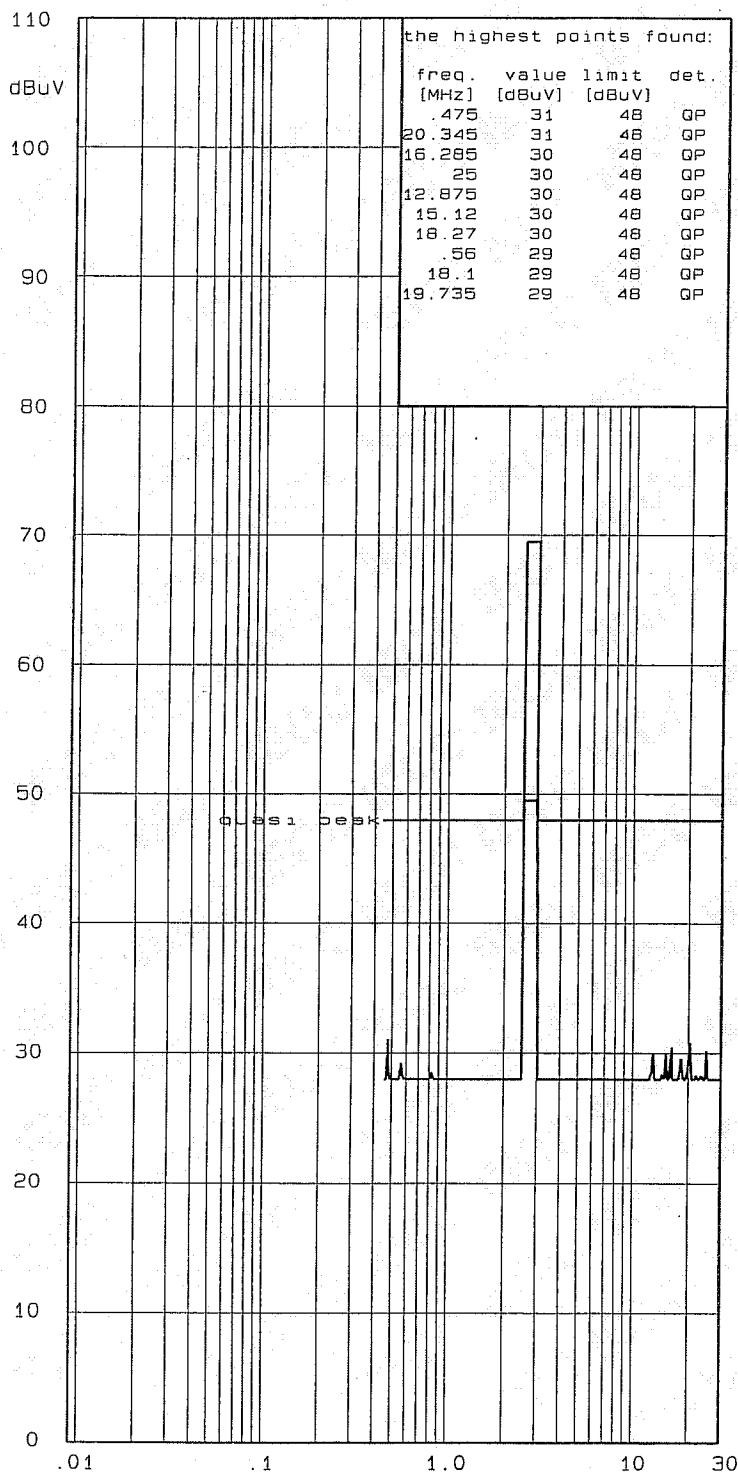
--

* two dB safety margin for
type approval necessary

Operator: KS

Result: OK

IECC



ISM 1/2

Interference Voltage 450 KHz - 30 MHz

acc. FCC PART 18 Subpart C Section 18.307(c)

Cabin 1

Model: SI561

Spl./Ser.No.: 01/--

Client : SUN LUEN ELEC.

Product: TABLE LAMP

IECC-No.: 46580

Date: 1 NOV 2006

Test equipment:

Rohde & Schwarz ESHS-30

Schwarzbeck NSLK8127

Connected sets:

TEST W/O USB LOAD

Operating mode:

OPERATE

(N)

TEST AT 120VAC /60Hz

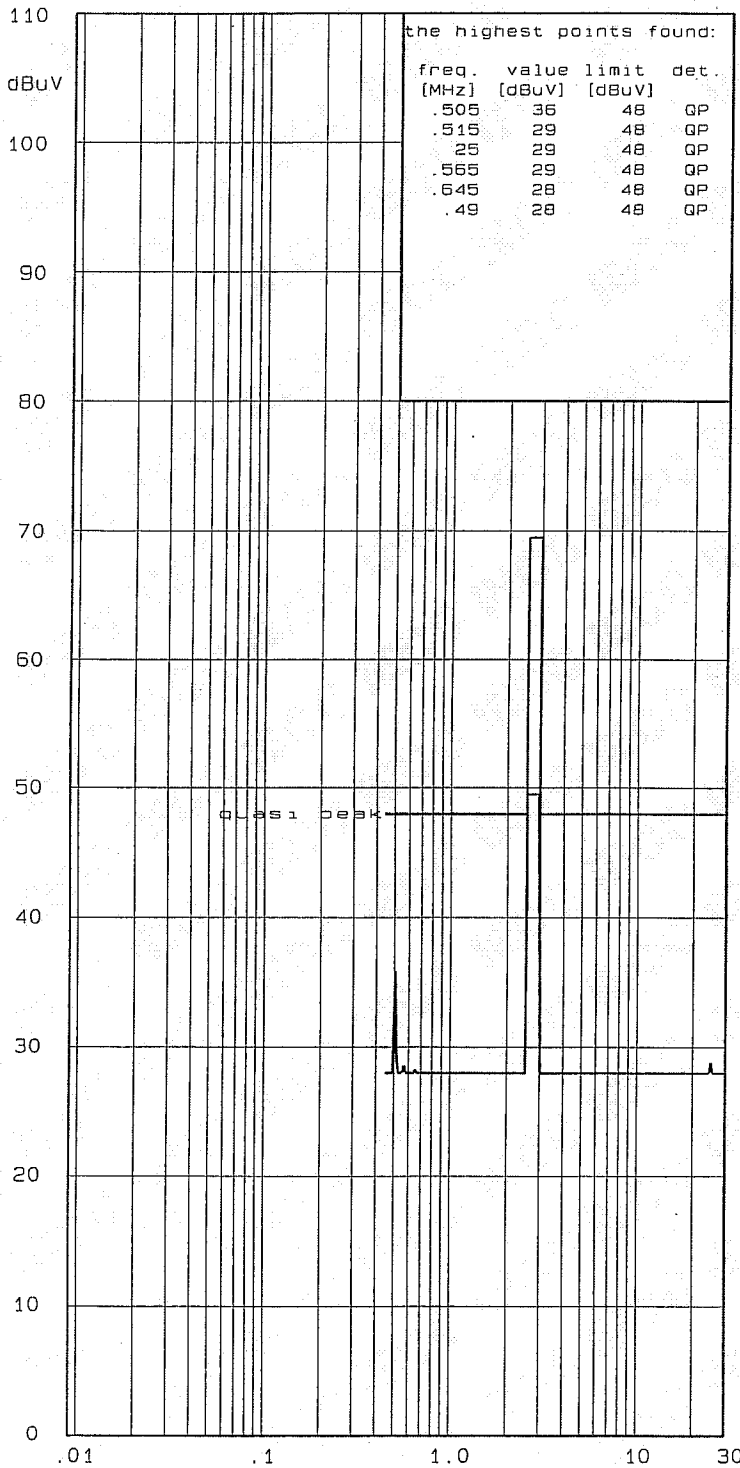
RFI suppression parts:

* two dB safety margin for
type approval necessary

Operator: KS

Result: $\circ \angle$

IECC



FCC – Test Report

No. 46580

Date: 2006-11-16

Page 15 of 21

Photographs

Conducted Emission Test setup



FCC – Test Report

No. 46580

Date: 2006-11-16

Page 16 of 21

Conducted Emission Test setup



FCC – Test Report

No. 46580

Date: 2006-11-16

Page 17 of 21

Sample Construction Details



FCC – Test Report

No. 46580

Date: 2006-11-16

Page 18 of 21

Sample Construction Details



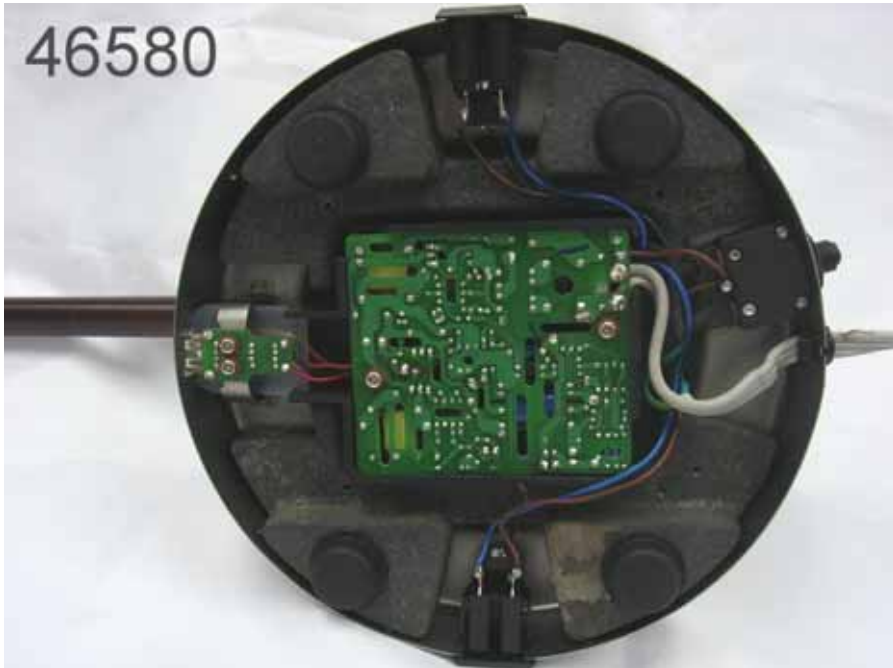
FCC – Test Report

No. 46580

Date: 2006-11-16

Page 19 of 21

Sample Construction Details



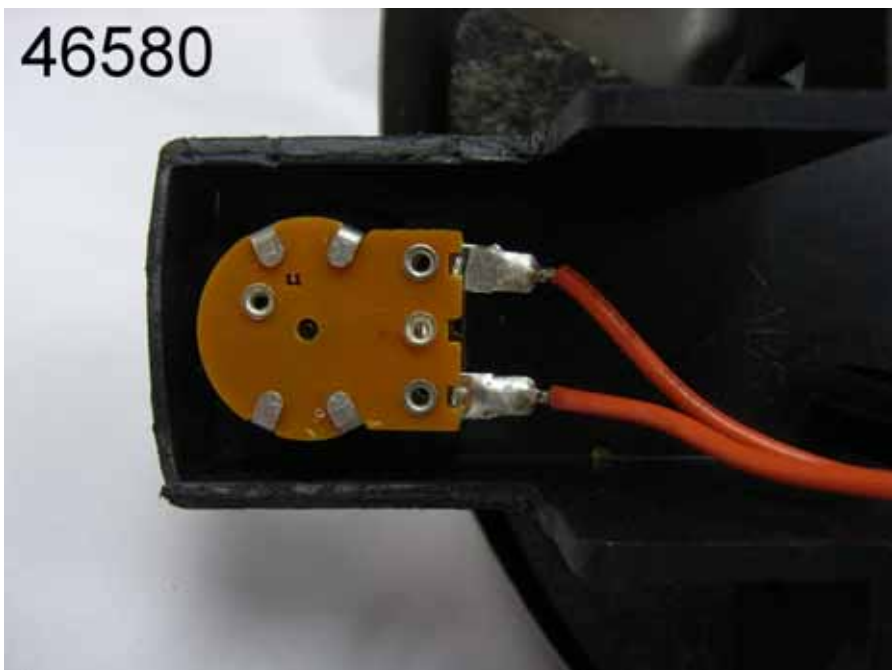
FCC – Test Report

No. 46580

Date: 2006-11-16

Page 20 of 21

Sample Construction Details



FCC – Test Report

No. 46580

Date: 2006-11-16

Page 21 of 21

Sample Construction Details

