

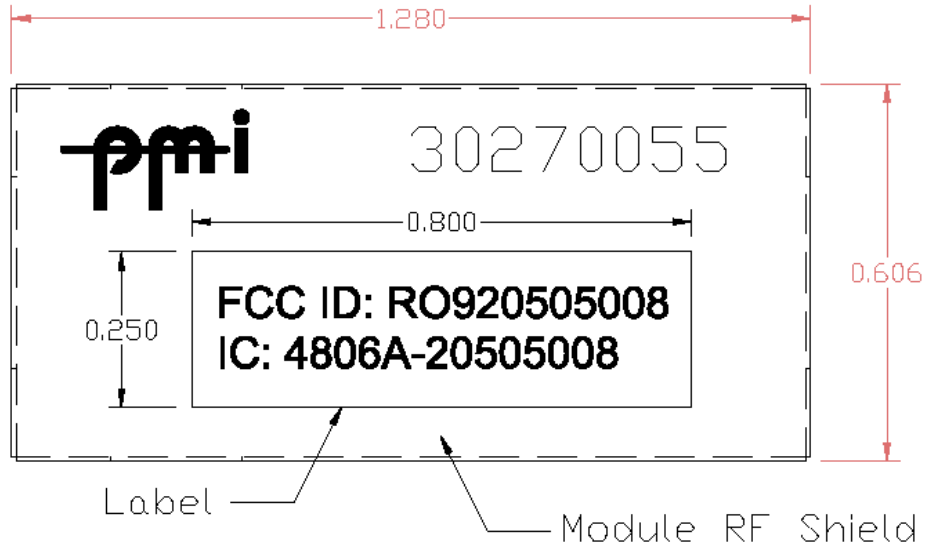
Rhein Tech Laboratories, Inc.
360 Herndon Parkway
Suite 1400
Herndon, VA 20170
<http://www.rheintech.com>

Client: Power Monitors, Inc.
Model #: 20505008/20505009
Standards: FCC 15.247 & RSS-210
FCC ID/IC: RO920505008/4806A-20505008
Report #: 2006006

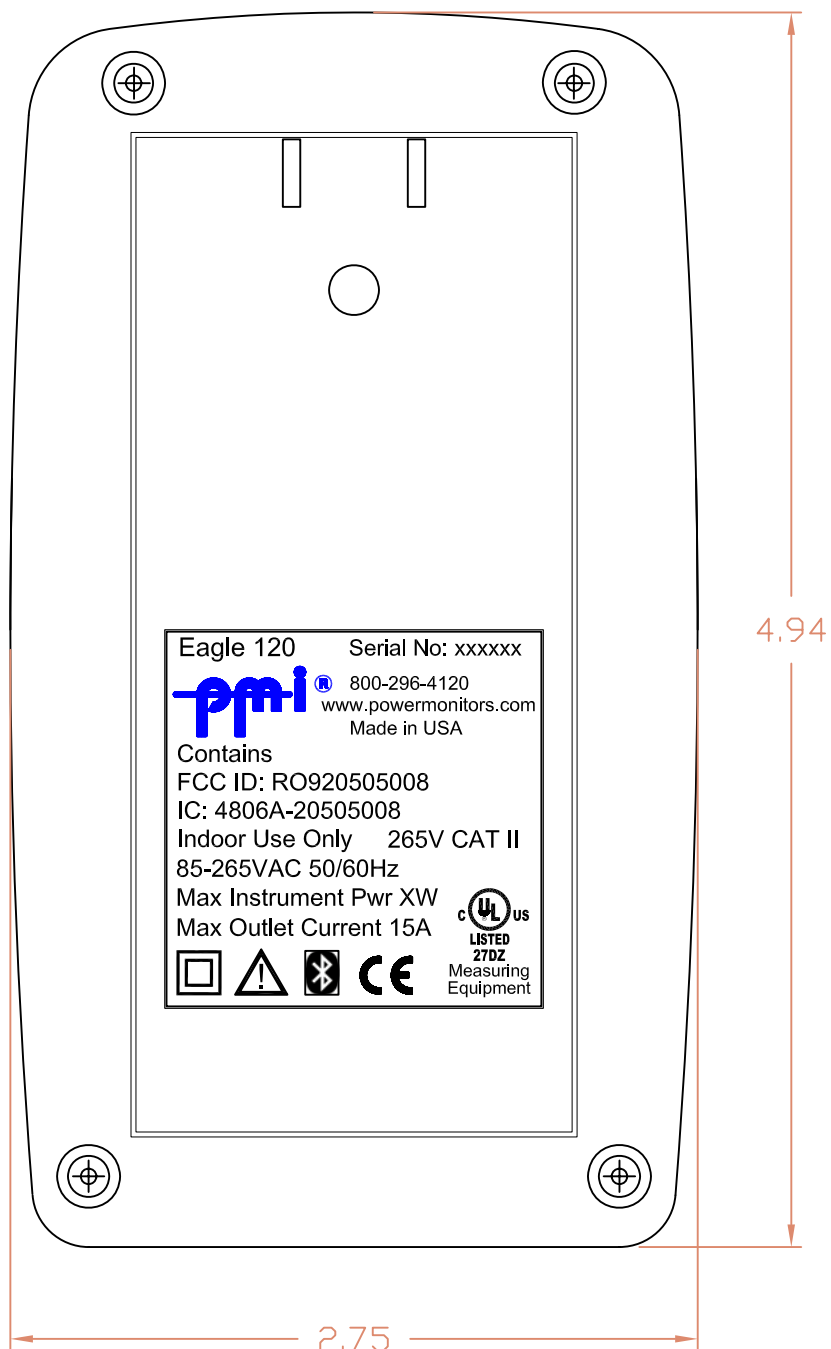
Appendix H: Label and Label Location


Please refer to the following pages for a sample of the ID label and location on the Bluetooth module, as well as a sample of the ID label that will be visible on the host.

ID Label Sample & Location on Module RF Shield



"Contains ID ..." Label Visible on Host



REV	REVISION/ECN		DATE
A2	Corrections to FCC ID text		1/30/06
Unless Otherwise Noted Dimensions are in Inches Tolerances are: .XXX +/-0.005 .XX +/-0.010 .X +/-0.015	APPROVALS	DATE	 Power Monitors Inc. Harrisonburg, VA 22801 Eagle 120 FCC/IC label location, rear side
	DRAWN	1/24/06	
	GKS	1/24/06	
	ENG		
	GKS		
	PRODUCTION		
	BUYER		
DD NOT SCALE DRAWING			
	SIZE A	DWG NO. 30600066_loc	REV A2
	SCALE	FILENAME Eagle120 rear_label.dwg	Page 1 of 1