

# G-COMBO<sup>+</sup>

## VGA UPSCAN CONVERTER

---

# OWNER'S MANUAL

Manual Version 1.1



CSE CO.,LTD    [www.cseworld.com](http://www.cseworld.com)  
18F,DAESHIN LIFE INSURANCE B/D, #395-68,  
SHINDAEBANG-DONG,DONGJAK-GU,SEOUL,KOREA  
TEL : 82-2-6265-3345    FAX : 82-2-6265-3346  
e-mail : [sales@cseworld.com](mailto:sales@cseworld.com)

THIS DEVICE COMPLIES WITH PART 15 OF THE FCC RULES. OPERATION IS SUBJECT TO THE FOLLOWING TWO CONDITIONS: (1) THIS DEVICE MAY NOT CAUSE HARMFUL INTERFERENCE, AND (2) THIS DEVICE MUST ACCEPT ANY INTERFERENCE RECEIVED, INCLUDING INTERFERENCE THAT MAY CAUSE UNDESIRE OPERATION.

FCC ID :

MADE IN SEOUL, KOREA

## FCC RF INTERFERENCE STATEMENT

### NOTE :

This equipment has been tested and found to comply with the limits for a Class B digital device, pursuant to Part 15 of the FCC Rules. These limits are designed to provide reasonable protection against harmful interference in a residential installation.

This equipment generates, uses and can radiate radio frequency energy and, if not installed and used in accordance with the instructions, may cause harmful interference to radio communications. However, there is no guarantee that interference will not occur in a particular installation.

If this equipment does cause harmful interference to radio or television reception which can be determined by turning the equipment off and on, the user is encouraged to try to correct the interference by one or more of the following measures.

- Reorient or relocate the receiving antenna.
- Increase the separation between the equipment and receiver.
- Connect the equipment into an outlet on a circuit different from that to which the receiver is connected.
- Consult the dealer or an experienced radio, TV technical for help.
- Only shielded interface cable should be used.

Finally, any changes or modifications to the equipment by the user not expressly approved by the grantee or manufacturer could void the users authority to operate such equipment.

# CONTENTS

## PART 1 OVERVIEW

1.1 Introduction .....	03
1.2 Features .....	03
1.3 Packages .....	04

## PART 2 DESCRIPTION

2.1 System Layout .....	05
2.2 Details of each Part .....	05

## PART 3 CONNECTIONS

3.1 Connection to a Computer .....	09
3.2 Connection to a Playstation2 .....	11
3.3 Connection to other Image Devices .....	14

## **PART 1 OVERVIEW**

### **1.1 Introduction**

Thank you for purchasing our "G-COMBO<sup>+</sup>". You can use PC & Sony Play Station 2 with High Resolution Monitor by this VGA Converter. Component, Composite and S-VHS Signal is converted to High Resolution VGA Signal by G-COMBO<sup>+</sup>. You can connect the Playstation2, VCR, Laser Disk Player, VCD/DVD Player, Camcorder, any other Game Console ( Nintendo, Microsoft X-Box etc..) to G-COMBO<sup>+</sup> and play on the Monitor or TV .

And this G-COMBO<sup>+</sup> automatically detect a NTSC and PAL Signal and transfer the signal to PC Monitor.

### **1.2 Features**

- Excellent picture quality by using Component input
- Same design as Playstation2 Hardware
- No needs any extra driver
- Work with any PC System
- Automatic detect a NTSC/PAL signal
- Support VGA In/Out
- Support Composite & S-VHS Video Input
- Support Audio Input/Output
- Support all kinds of Video output  
PAL BGHI/NTSC M, NTSC 4.43(50Hz)/PAL 4.43(60Hz),  
PAL N/NTSC 4.43(60Hz), NTSC N/PAL M/SECAM VIDEO  
Input etc...
- Dimension: 140(D)mm x 90(W)mm x 30(H)mm
- OSD function
- Support major game console (Playstation2, X-Box, GameCube...)
- No need for the adaptor (USB Power Use)

### 1.3 Packages



**[Main Box]**



**[VGA Cable]**



**[Audio Cable]**



**[USB Power Cable]**



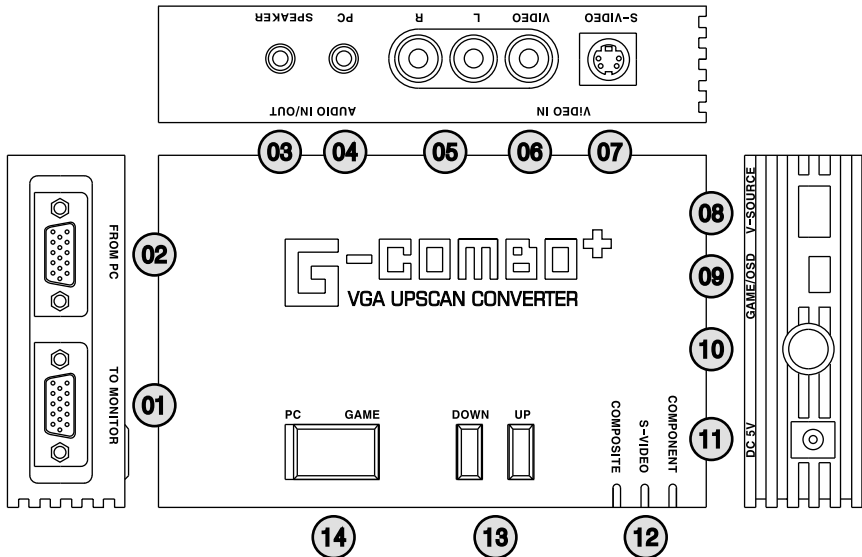
**[Manual]**

Check if you have items as follows :

Main Box, VGA Cable, Audio Cable, USB Power cable,  
Manual

## PART 2 DESCRIPTION

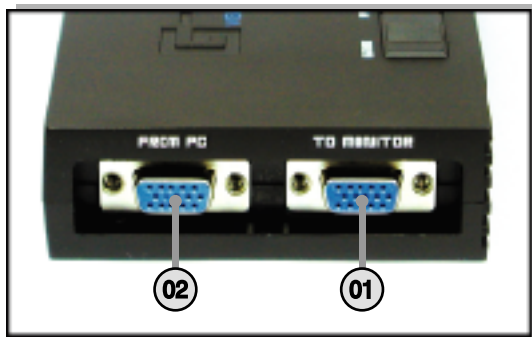
### 2.1 System Layout



### 2.2 Connections

#### VGA Part

- (01) TO MONITOR : Connect with Computer Monitor
- (02) FROM PC : Use G-COMBO+ VGA Cable and connect with Computer VGA Connector



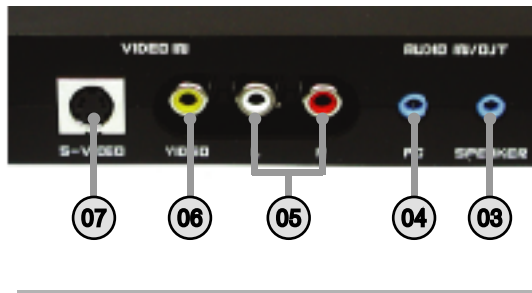
## VIDEO/AUDIO Part

### AUDIO IN/OUT

- (03) SPEAKER : Connect with external Speaker
- (04) PC : Connect to Speaker OUT or Line out of PC  
Sound Card ( Use G-Combo Audio Cable)

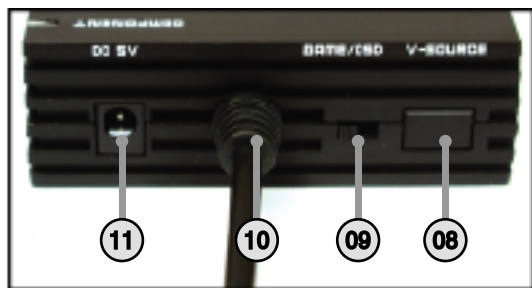
### VIDEO IN

- (05) AV L-R : Audio IN Connector
- (06) VIDEO : Video Composite IN Connector
- (07) S-VIDEO : S-VIDEO IN Connector



## POWER / MODE Section

- (08) V-SOURCE : Component / S-Video / Composite Mode Selection Button (The previous selected source is automatically memorized when the power is off)
- (09) Game/OSD : Game & OSD Mode Selection Button
- (10) PS2 Multi Jack : Playstation2 AV Multi OUT Connector on Connection Cable
- (11) DC 5V : DC 5V Power Supply Connector ( Use included USB Power Cable)



## LED Display

(12) LED Light : Component, S-Video, Composite Connection  
Display LED



## OSD Function

(13) There is an OSD function on G-COMBO<sup>+</sup>. User can control Game Screen, by using OSD switch.

In order to use OSD function, select OSD switch on G-COMBO<sup>+</sup>.

OSD menu will appear on Screen. Push V-Source button and select what to adjust. By using DOWN/UP Key, change Bright, Contrast, Saturation, Hue, and Sharpness.

1. Brightness : Control Brightness on Game screen
2. Contrast : Control Contrast on Game screen
3. Saturation : Control Saturation on Game screen
4. Hue : Control Hue on Game screen
5. Sharpness : Control Sharpness on Game screen



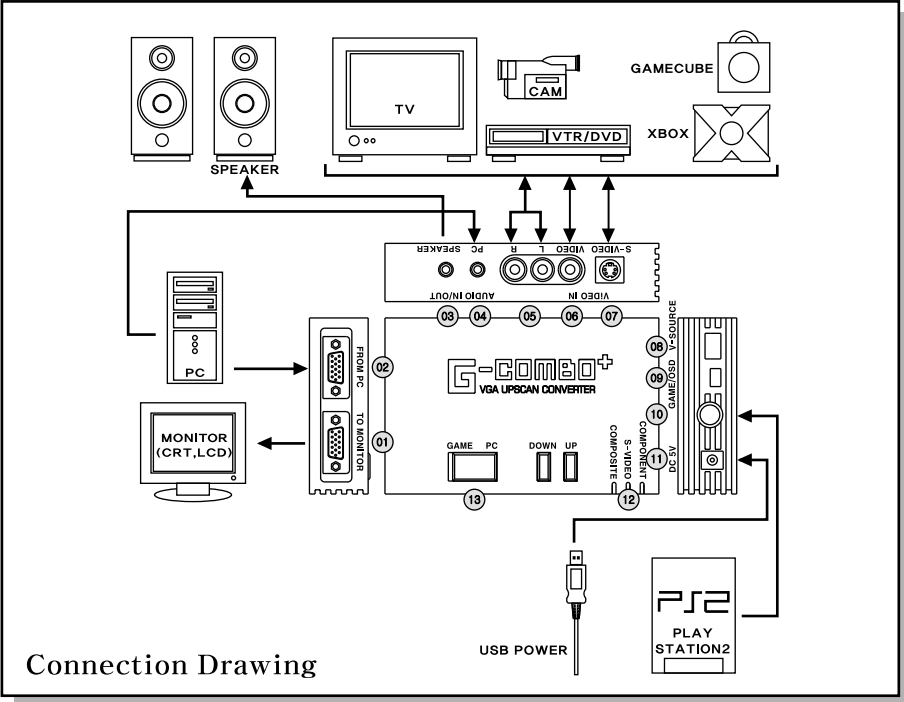


## **PC-GAME Selection**

(14) PC-GAME Selection : Computer and PS2 ( or Image device-Video Player, DVD, Camcorder or other Game Machine etc..) mode selection switch



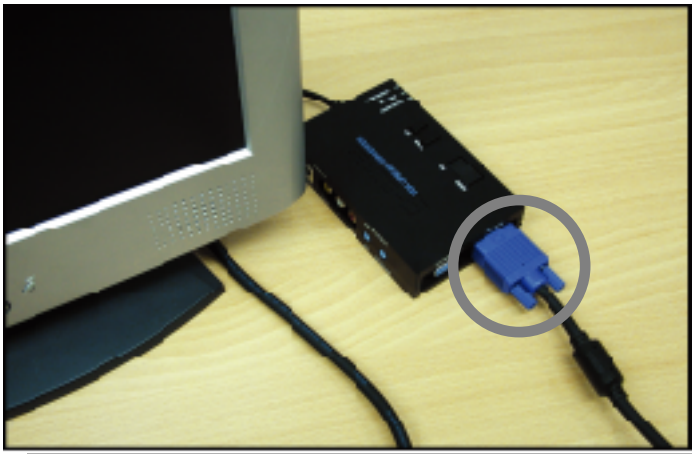
# PART 3 SYSTEM CONNECTION



Connection Drawing

## 3.1 Connect with Computer

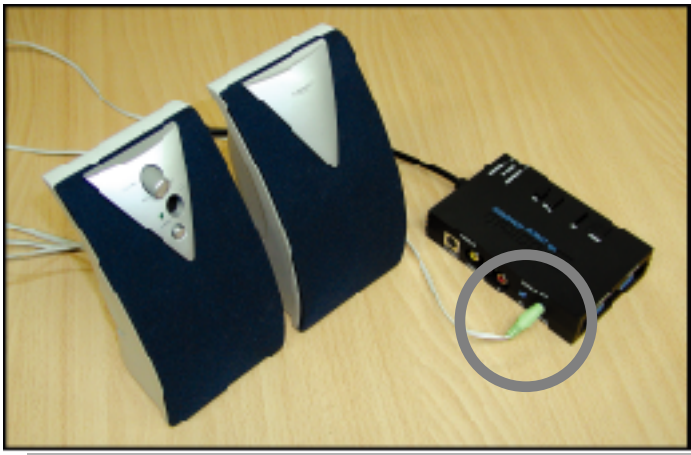
This section describes how to hook up the G-COMBO<sup>+</sup> to PC



A) Connect Monitor to G-COMBO<sup>+</sup> Connector(①)



B) Use VGA Cable (included with G-COMBO<sup>+</sup>) and connect with computer ( Computer "VGA Out" to G-COMBO<sup>+</sup> " From PC " (② VGA IN )



C) Connect External Speaker with G-COMBO<sup>+</sup> Speaker Output (③)

D) Connect Sound Cable : Use Audio Cable and Connect G-COMBO<sup>+</sup> Audio connector (④) to PC Speaker OUT or Line OUT.



### 3.2 Connect with Playstation2

This section describes how to connect G-COMBO<sup>+</sup> with Playstation2



A) Connect Playstation2 Multi Jack (⑩) of G-COMBO<sup>+</sup> to Playstation2 AV Multi OUT



- B) By using USB Power cable, connect G-COMBO<sup>+</sup> Power Jack (⑪) to USB Port of Playstation2 for supplying DC 5V Power to G-COMBO<sup>+</sup>
- C) If you use all of the two USB ports, please use external DC 5V Power Adaptor(Not included) or USB Port on PC

Now, ready to use G-COMBO<sup>+</sup> with Playstation2.



- A) Please turn on the power of Monitor and Computer and Playstation2.
- B) Check PC & GAME Switch(⑭) - If you want to play Playstation2 , please select G-COMBO<sup>+</sup>'s switch to GAME Mode, To use computer, select switch to PC Mode.

- C) In any time you can change a mode from PC to GAME or GAME to PC. Even if you change a mode during computer working to Playstation2 Game, your current computer job is not deleted or reset.

**If any video source is not shown on the screen after connecting multi jack of G-COMBO<sup>+</sup> to PS/2 AV multi output**

For the high picture quality, G-COMBO Plus enables Component input of Playstation2 signal.

If PS2's setup is not Component Video Out, Playstation2 screen does not work in the PC monitor.

If any video source is not shown on the screen after connecting multi jack of G-Combo+ to Playstation2 AV multi output, Please follow below procedure.

1. Connect the cable provided with Playstation2 to Playstation2 AV multi out
2. Turn on Playstation2 without inserting any game CD
3. Select "system configuration" on the screen
4. Select "component video out" at the system configuration mode
5. Select "Y Cb/Pb Cr/Pr" at the component video out
6. Connect multi jack of G-Combo+ to Playstation2 AV multi output

### 3.3 Connect with other image device (DVD Player, VTR, Camcoder, TV, XBOX, GAMECUBE.....)

**\*\*\* Be sure to Unplug Playstation2 from G-COMBO<sup>+</sup> .\*\*\***

A) Disconnect PS2 from G-COMBO<sup>+</sup> or switch off PS2.

If PS2 is connected, even though you push V-Source button and take the input, screen changed, but sound doesn't change.

B) Use Audio Connecting Cord ( White and Red Cord)

When connecting the cord, be sure to match the color coded cord to the appropriate jacks on the components : White (left) and Red(right).

Be sure to make connections firmly to avoid hum and noise.

C) Use Video Connection cord ( Yellow)

Yellow color cord is Video connection jack.

\*\* Use (B) and (C) cord , connect G-COMBO<sup>+</sup> and Components. ( VTR, DVD, TV, Camcorder, Nintendo64 etc..)After connecting Video cable( Composite Yellow cable), Press V-Source button on G-COMBO<sup>+</sup> and change to Composite.

D) If Component has S Video Output.

If your components has S-Video Output, use S-Video connecting cable( not included) and connect G-combo to component's output .

**\*\*\* If you use S-Video jack, skip " C ".\*\*\***

After connecting S-Video Cable, press V-Source Button on G-COMBO<sup>+</sup> and change to S-Video.



