

ATTACHMENT E.

- USER'S MANUAL -

Table of Contents

1. Before Using

2. WINDOWS

3. LINUX

4. MAC

5. How to Use Application Software

1. Run the Software

2. Create Partition

3. Create Boot Disk

1. Before Using LG USB Drive

Welcome to **XDRIVE MINI**.

This user guide is designed to help you use **XDRIVE MINI** correctly and safely. Please read this information carefully before using **XDRIVE MINI**. Please pay special attention to the sections that describe **XDRIVE MINI** operation for the Operating System being used by your computer.

◆ Safety Instructions

These Safety Instructions include directions and precautions for you to follow when using **XDRIVE MINI**. The instructions aim to secure your safety and to prevent any damage to your computer, your **XDRIVE MINI** and your data.

Warning instructions indicate that failure to follow the directions could result in possible personal injuries.

Caution instructions indicate that failure to follow the directions could result in damage to the **XDRIVE MINI** or data.

Warning

- To reduce the possibility of electrical shock, do not use the **XDRIVE MINI** if wet with any liquids such as water or chemicals.
- To reduce the possibility of an electrical short circuit, do not plug the **XDRIVE MINI** into your computer's USB port. Plugging a wet **XDRIVE MINI** in causes a danger of damaging the **XDRIVE MINI** and/or your computer.
- If any smoke or strange smells or noise occurs when using **XDRIVE MINI**, be sure to turn off your computer and peripheral devices immediately and disconnect the power cords.

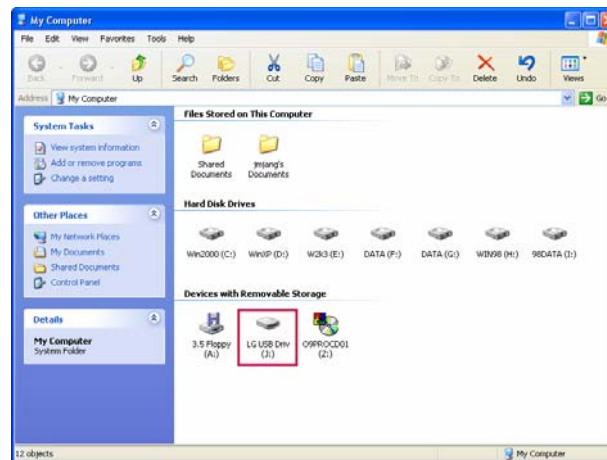
Caution

- Do not disconnect the **XDRIVE MINI** from the computer's USB port while transferring (reading or writing) data. This will probably result in your data being corrupted.
- Make sure that you follow the instructions given in this guide when using or removing the product. Incorrect use of **XDRIVE MINI** may cause a malfunction of the product and/or loss of your data.
- Be careful not to bend or twist the **XDRIVE MINI**. Do not place any heavy object on the product.
- Please do not attempt to disassemble or modify the product. It can cause malfunction of the product. There are no user serviceable parts in the **XDRIVE MINI**.
- Do not use your **XDRIVE MINI** in any place exposed to the following conditions, as it may cause a malfunction of the product : excessive vibration or shock; wetness, moisture or dust; heat and/or high temperature variation; strong electrical discharge; strong magnetic interference.
- Be careful that any foreign material does not enter the insertion holes of **.INNATOR INC.** assumes no responsibility for any corruption or loss of data and accompanying results due to incorrect use of the product.

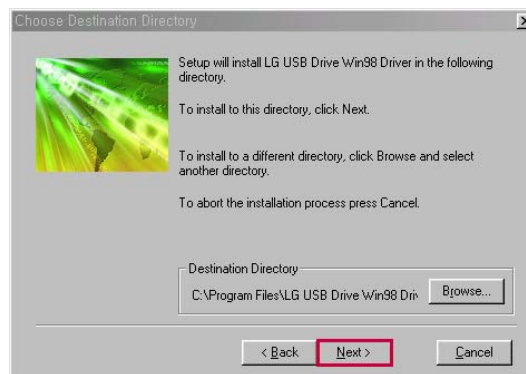
2. WINDOWS

(1) Auto Detection as a Removable Disk (PLUG & PLAY)

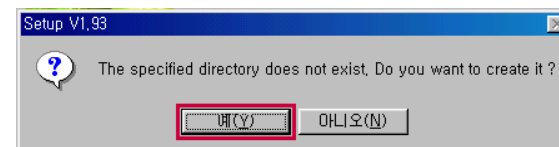
You don't have to install an additional driver on Windows ME, 2000, XP. These OS will detect your XDRIVE MINI automatically when you just plug your XDRIVE MINI into USB port at your PC. You can see creating a new "Removable Disk" and use the removable disk as an Local Hard Disk Drive



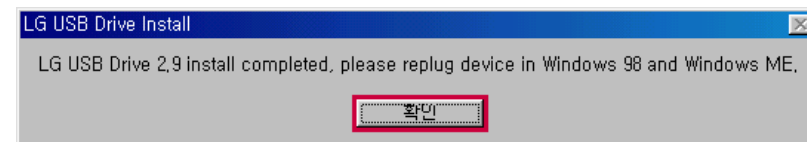
※ **Warning** : In case of Windows 98 Second Edition, you first have to install the Win98Driver on Setup CD. You can find the driver at the following directory on Setup CD; The driver name is " Win98 Drive Setup.exe"



① Start a Driver Setup Wizard, click [Next] button if you agree the message



② Click [Yes] button if you agree the message



③ Confirm to complete the driver installation click [OK] button. After that, plug XDRIVE MINI into your system.

(2) Safe to Remove (UNPLUG)

After you finish transmitting data between your system and XDRIVE MINI, Please keep the following unplugging procedure. If not, your data and XDRIVE MINI might be damaged. Especially, when the LED of Product is blinking fast, it is in data transmission between the product and your system.

[Windows 98SE]

- ① Open [Windows Explorer]
- ② Select the Removable Disk - your XDRIVE MINI
- ③ Open pop-up menu by clicking right button of mouse
- ④ Finally, Select [Eject] at the pop-up menu.

[Windows ME / 2000 / XP Operating System]

Windows ME / 2000/XP Users keep the procedures referring to the following figures before unplugging XDRIVE MINI from USB port.

- ① Before unplugging from USB port, double click on [Unplug or Eject Hardware] or [Safe to Remove] icon
- ② Select [USB Mass Storage Device] and then click [Stop] button.
- ③ Finally, select [INNATOR Device] and click [OK] button. A screen will appear informing you when it is safe to unplug the XDRIVE MINI High from the USB port and click [OK] button. Before unplugging the XDRIVE MINI High from the USB port make sure that the Status LED has turned off. If it has, you can safely unplug the XDRIVE MINI High from your computer. If it is still on, repeat the procedure.

3. Linux

Make sure the following procedure when using XDRIVE MINI on LINUX system.

- ① Insert XDRIVE MINI USB to a USB port and Login to [Root]
- ② Open [Terminal Window](xterm, hanterm)
- ③ Make a new folder of [XDRIVE] with typing [mkdir /mnt/ XDRIVE]
- ④ Mount with typing [mount /dev/sda1 /mnt/ XDRIVE]. (If [sda1] fails, then check [sda2, sdb1, sdb2])
- ⑤ Check the mount with command of [df].
- ⑥ [/dev/sda1 127684 8 127676 1% /mnt/ XDRIVE]
- ⑦ Move on to XDRIVE MINI folder with command of [cd /mnt/ XDRIVE]
- ⑧ Use the mounted folder
- ⑨ After reading or writing, you should unmount with command of [umount /dev/sda1]

※ **Warning** : XDRIVE MINI is available on Linux 2.4 higher version and you can not use Application Software.

4. Mac

Plug the device, and make sure that new Disk icon is created. Before unplugging the device, please drag the new disk icon to [Recycle Bin] and then unplug the device.

※ **Warning** : XDRIVE MINI is available on Mac OS 9.0 higher, and Application Software

5. How to Use Application Software

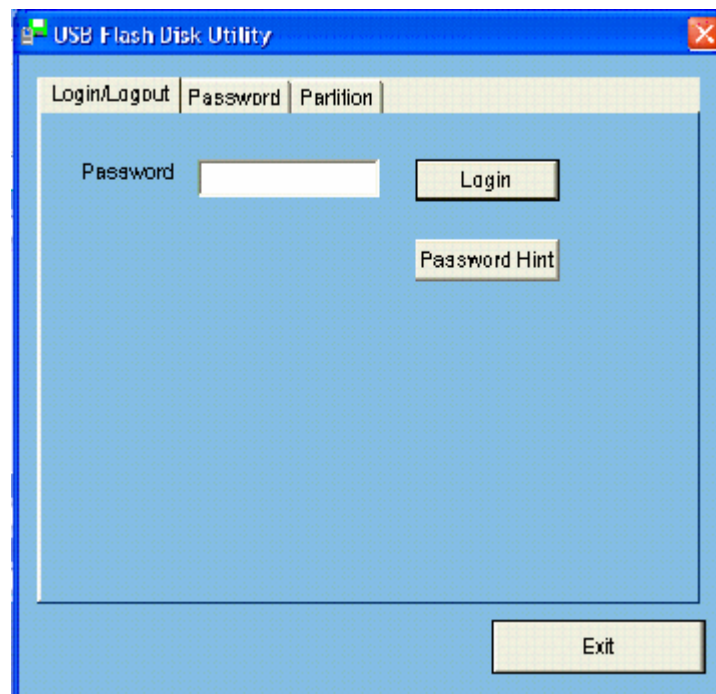
“XDRIVE” Application Software will allow you to lock the removable disk by setting password or create two partitions ; first partition will be locked by password and second partition will be open without password. It is possible to set each partition's capacity size.

※ **Warning** : Application Software is supposed to run on Windows 98SE, ME, 2000, XP Operating System only, excluding LINUX and MAC.

1. Run the Software

After plugging the device into USB port, and then run the software. You can find the software on Setup CD; The software name is “98WIN SETUP”

※ **Note** : After creating partition, the application software will be always located at your device.

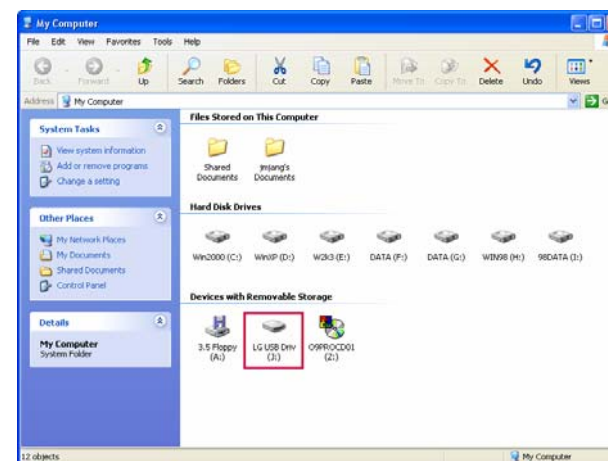
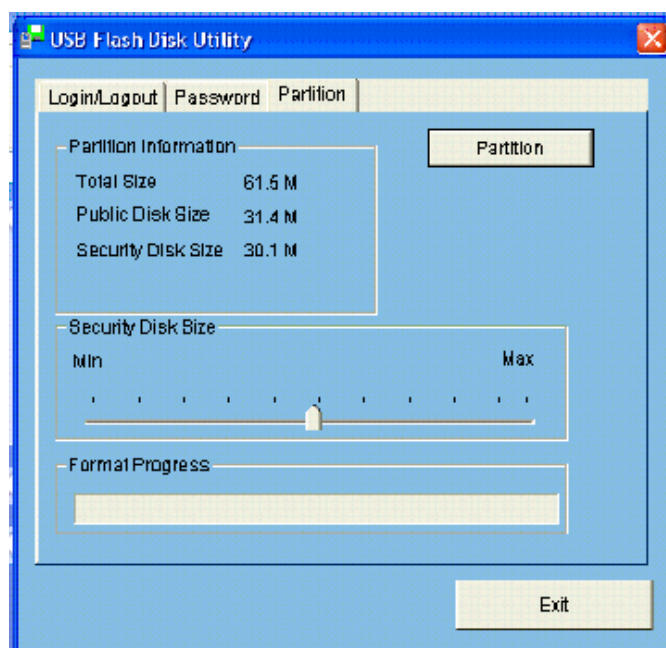


2. Create Partition

After running application software, select [Create Partition] button. It is possible to create three mode partition; public area only(single partition), security area only(single partition), or public and security area(dual partition). After applying the mode, unplug the device and plug again..

(1) Public Area Only (Single Partition)

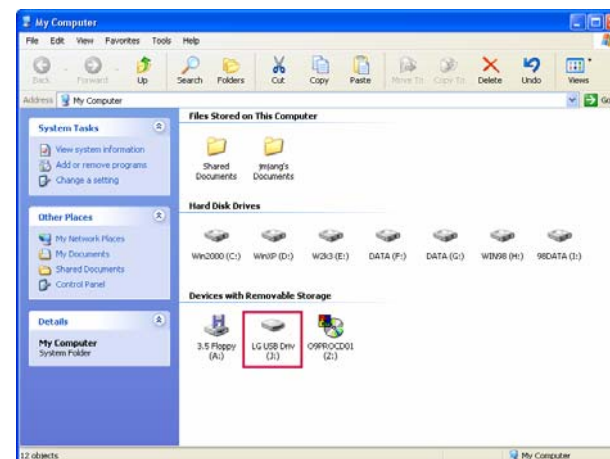
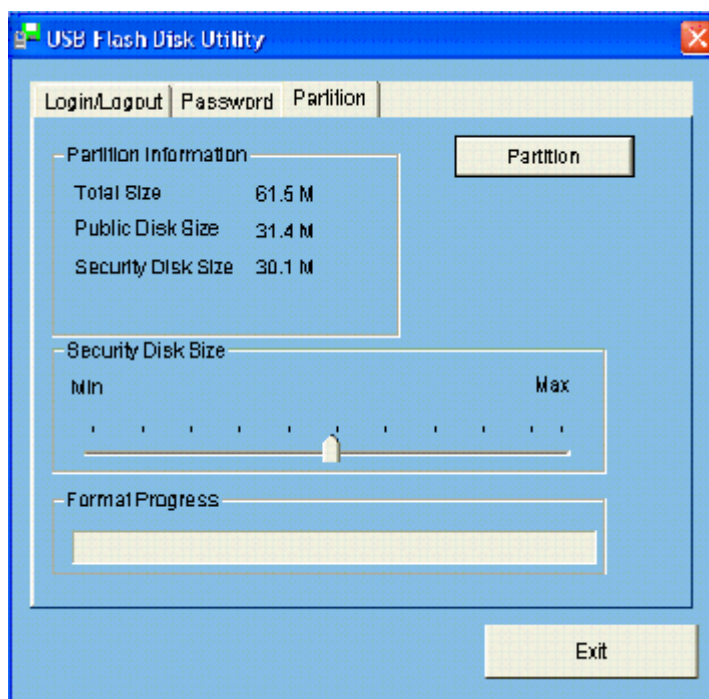
System will detect one removable disk(Single Partition), and the removable disk has no password. After applying the mode of public area only, system will detect the device as XDRIVE MINI (disk label name).



(2) Security Area (Single Partition)

System will detect one removable disk(Single Partition), and the removable disk has password. After applying the mode of public area only, system will detect the device as XDRIVE MINI(disk label name). The XDRIVE MINI disk includes application software automatically. In order to access the security area, you first run the software and log in with entering password. For more details about log in, please refer to the following “(4)Log In/Log Out”.

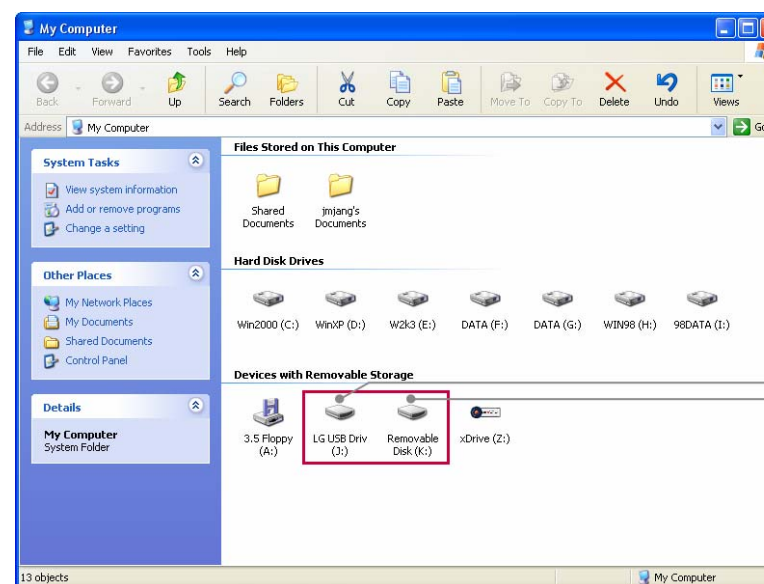
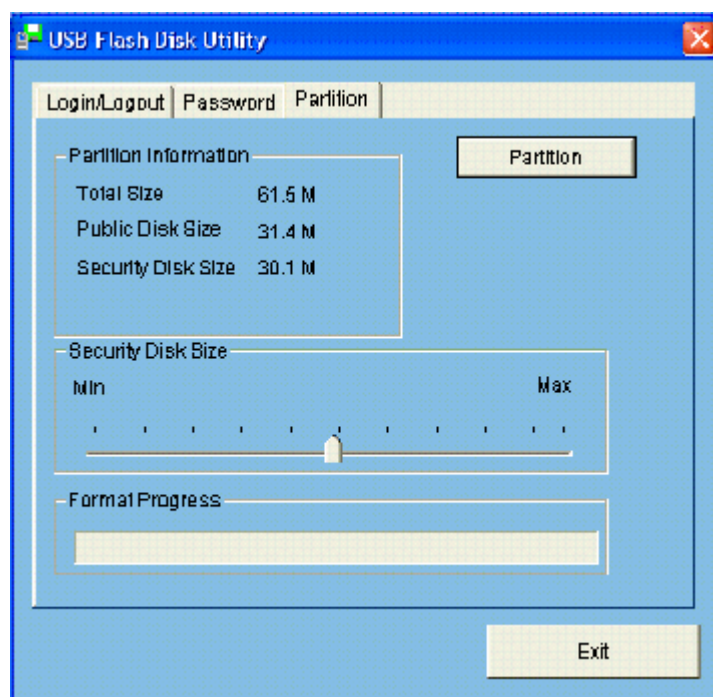
Double click the disk, you can see XDRIVE MINI application software. Run the software and log in entering password for accessing the security area.




(3) Public Area and Security Area (Dual Partition)

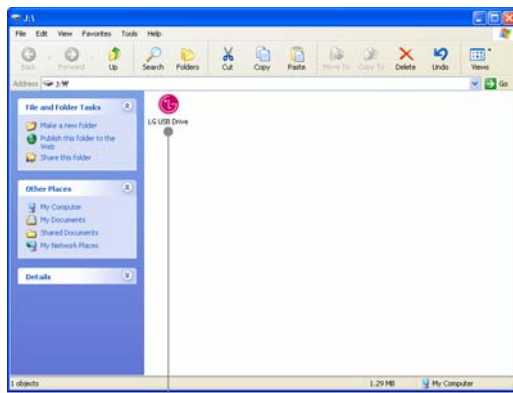
System will detect two removable disk(dual partition). The first disk's label name will be XDRIVE MINI and the disk will be security area which need to log in, and the second disk's label name will be a original removable and the disk will be public area not applying password.

In order to access the security area, you first run the software and log in with entering password. For more details about log in, please refer to the following “(4)Log In/Log Out”.

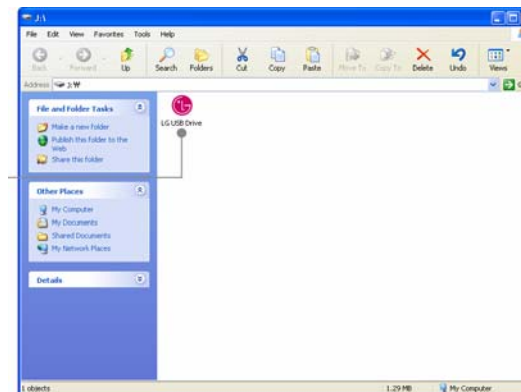
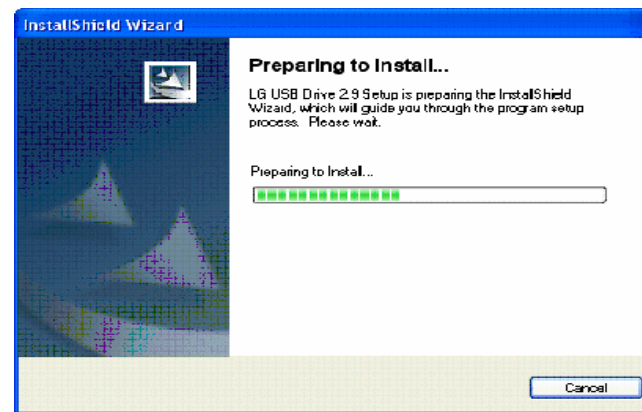


(4) Log In / Log Out

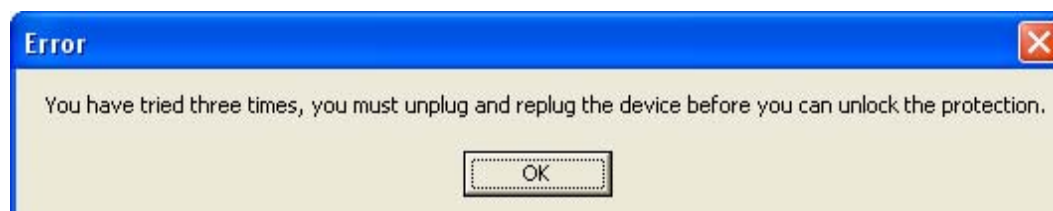
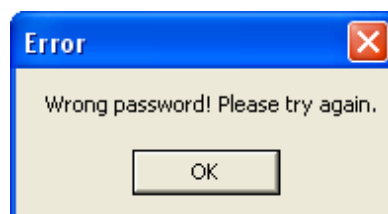
If you have activated a security area, type in your password in the login section to access the security area. There are three chances for you to type in the correct password. You are required to unplug and re-plug the device if you fail three times. This feature will take effect only if the security area is activated. In order to logout the device, double click the application icon  at the tray icon bar on windows.



① Run the application software insecurity area

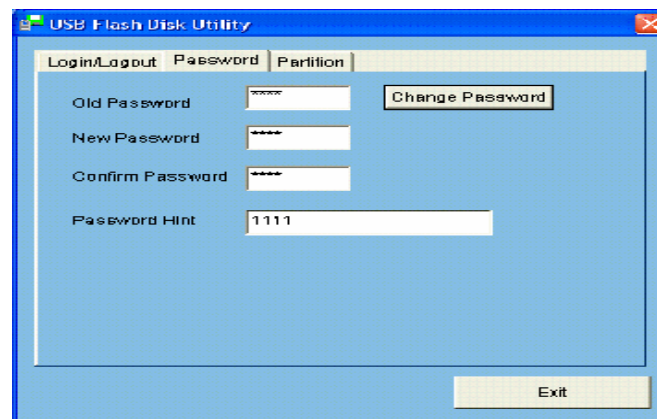


※ Note : If you key in the wrong password, the following message will be showed. You have three tries to input the password. After three tries, the following message will pop up. And you have to unplug and plug the device in order to do future action.



(5) Manage Password

You can change the old password. For changing the password, refer to the following figures.



※ Note : The password cannot be changed while you are logged into the security area. You have to first logout in order to change the password.

3. Create Boot Disk

You can create the device as a boot-up disk on Windows Operating System like 98 SE, ME, XP.

[Precaution]

- The application software will be running on Windows 98SE, ME, XP.
- Close the Anti-Virus program
- Make sure that Windows System is loaded on C: Drive
- Make sure that your device is in public area.
- The data will be deleted, back up your data before running the program.
- BIOS(or CMOS) on the system support USB HDD or USB ZIP in order to boot the system with the device.

Note: This equipment has been tested and found to comply with the limits for a Class B digital device, pursuant to part 15 of the FCC Rules. These limits are designed to provide reasonable protection against harmful interference in a residential installation. This equipment generates, uses and can radiate radio frequency energy and, if not installed and used in accordance with the instructions, may cause harmful interference to radio communications. However, there is no guarantee that interference will not occur in a particular installation. If this equipment does cause harmful interference to radio or television reception, which can be determined by turning the equipment off and on, the user is encouraged to try to correct the interference by one or more of the following measures:

- ⊗ Reorient or relocate the receiving antenna.
- ⊗ Increase the separation between the equipment and receiver.
- ⊗ Connect the equipment into an outlet on a circuit different from that to which the receiver is connected.
- ⊗ Consult the dealer or an experienced radio/TV technician for help.

Modifications not expressly approved by the manufacturer could void the user's authority to operate the equipment under FCC rules.

Note: The users manual or instruction manual for an intentional or unintentional radiator shall caution the user that changes or modifications not expressly approved by the party responsible for compliance could void the user's authority to operate the equipment. In cases where the manual is provided only in a form other than paper, such as on a computer disk or over the Internet, the information required by this section may be included in the manual in that alternative form, provided the user can reasonably be expected to have the capability to access information in that form.

Note: This device complies with Part 15 of the FCC Rules. Operation is subject to the following two conditions:

- (1) this device may not cause harmful interference
- (2) this device must accept any interference received, including interference that may cause undesired operation