

# USB X Drive 2.0

## User's Guide

INNATOR CO.,LTD.

[www.innator.com](http://www.innator.com)

## U.S.A.

### U.S.FEDERAL COMMUNICATIONS COMMISSION RADIO FREQUENCY INTERFERENCE STATEMENT INFORMATION TO THE USER

NOTE : This equipment has been tested and found to comply with the limits for a Class B digital device pursuant to Part 15 of the FCC Rules.

These limits are designed to provide reasonable protection against harmful interference in a residential installation.

This equipment generates, uses, and can radiate radio frequency energy and, if not installed and used in accordance with the instructions, may cause harmful interference to radio communications.

However, there is no guarantee that interference will not occur in a particular installation.

If this equipment does cause harmful interference to radio or television reception, which can be determined by turning the equipment off and on, the user is encouraged to try to correct the interference by one or more of the following measures:

- Reorient or relocate the receiving antenna.
- Increase the separation between the equipment and receiver.
- Connect the equipment into an outlet of a circuit different from that to which the receiver is connected.
- Consult the dealer or an experienced radio/TV technician for assistance.

Changes or modification not expressly approved by the party responsible for compliance could void the user's authority to operate the equipment.

Connecting of peripherals requires the use of grounded shielded signal cables.

**Table of Contents**

1. Introduction to USB X Drive 2.0.....4

2. Product Specifications .....4

3. Operation and Usage .....5

    4.1 Installing Manager Program.....6

    4.2 Installing and Using Security Features .....7

    4.3 Boot Up Function.....14

    4.4 Recovery Disk .....16

## 1. Introduction to USB X Drive 2.0

SAVE all your large files on the USB X Drive 2.0 such as PowerPoint, Presentations website design, music and video files. With the size of a car key, the USB X Drive 2.0 connects to your USB Port, and allows you to transfer your files up to 2GB.

SECURE your confidential files with ease of mind. Before you leave your home or work, back-up your important data and carry it with you.

SHARE with all major operating systems faster than anything of its size.

You can Plug-and-Play the device on nearly all PC worldwide using Windows, Mac, and Linux operating systems.

### Plug & Play

- You can read and write data immediately after inserting it into the USB port of a PC or notebook.

### No external power needed

- Batteries or an external power source are unnecessary since it uses USB power.

### LED Indicator

- When you insert the Mobile Disk into the computer port, a red LED flashes repeatedly. In standby mode, it flashes once every second. During any reading and writing, it flashes continuously.

## 2. Product Specifications

Interface	USB Specification 2.0/(1.1 compatible)
Supported OS	Windows 98, SE, ME, 2000, XP, Mac OS 9.0 +, LINUX Kernel Version 2.4.0 + (Driver CD installation needed for Windows 98, SE)
Capacity	16MB, 32MB, 64MB, 128MB, 256MB, 512MB, 1GB, 2GB
Term of Data Preservation	10 years
Read/Write Speed	Read: 8MB/sec, Write: 6MB/sec
Power Supply	USB Bus-powered (No separate power source needed)
Components	Main Component, CD, USB Cable, Warrant, Necklace (Except HANA Mobile Disk)
Manufacturer	INNATOR CO., LTD. Tel: +82 - (31) 477 - 1406

### 3. Operation and Usage

#### General Operations

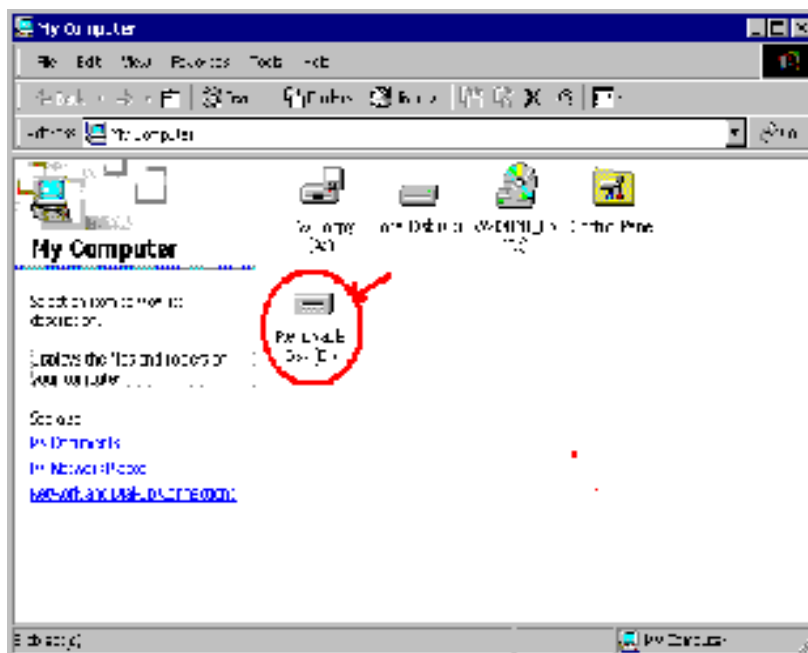
You can freely save & transport your personal file or screen data in the office school etc...  
and easily save a file with big size from 16MB to 2GB such as presentation data, music & images

The following operating systems do not need driver installation:

- Windows ME, Windows 2000, Windows XP, Mac OS 9.0 or higher, Linux Kernel Version 2.4.0 or higher.

The following operating systems need driver installation:

- For Windows 98 and Windows 98 Second Edition (SE), driver installation is required since the OS itself does not support a Mass Storage Device. (The Driver Install CD is installed only once.)
- For Windows 98/98SE, install the driver with the Auto Install CD supplied by our company.
- After installation, the USB X Drive 2.0 is recognized as a Removable Disk as shown below.



**[Note1]** Be sure to connect the XDrive 2.0 to the USB port before running the Manager Program. (See Chapter 4 for installation)

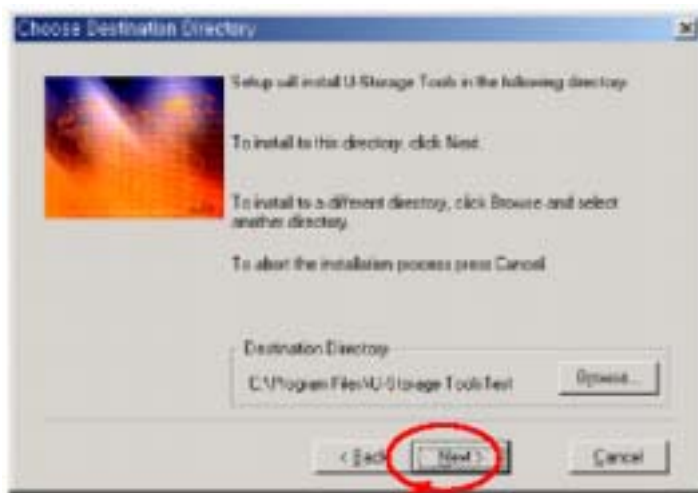
**[Note2]** For Win98 / Win Me, you must unplug the XDrive 2.0 after the driver installation and then plug it in for normal operation.

## 4.1 Installing Manager Program

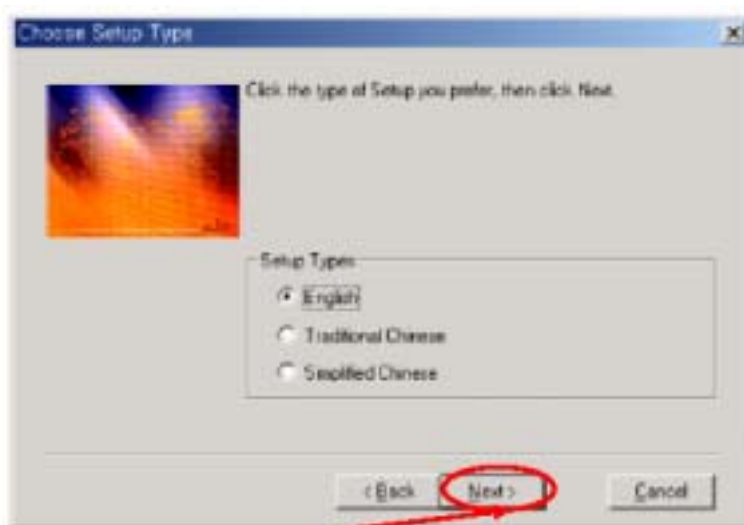
- 1) Insert the Manager Program CD supplied with the product into the CD ROM drive.
- 2) The main window of the Manager Program automatically appears as shown below.

### Image Insertion [Manager Program Selection Window]

- 3) Select the Manager Program installation menu. The corresponding manager program installation screen appears.



Click [Next].



Select a language and click [Next].

4) When the installation is complete, the following message appears. Click OK.



5) "U-Storage" is automatically registered on Programs as shown below.



6) The main window automatically appears as shown below. (Unplug and plug the product for Win98, SE, and ME).



## 4.2 Installing and Using Secure Feature

### 1) Changing a Password

To change your password for protection of your private information, proceed as follows:

Right click on the tray icon at the bottom right of the screen.



Right click here.



Select U - Storage.

Select "Change Password." When the following window appears, change the password and click OK.



< Be sure to take note of your new password to not forget it.>

[Note] If you failed to enter the correct password three times or more, please plug in the device again and try again.

If you can't remember your password, you can use the Hint for help.





## 2) How to Log in / Log out

Log in to move to the security data area.

Log out to move to the public area.

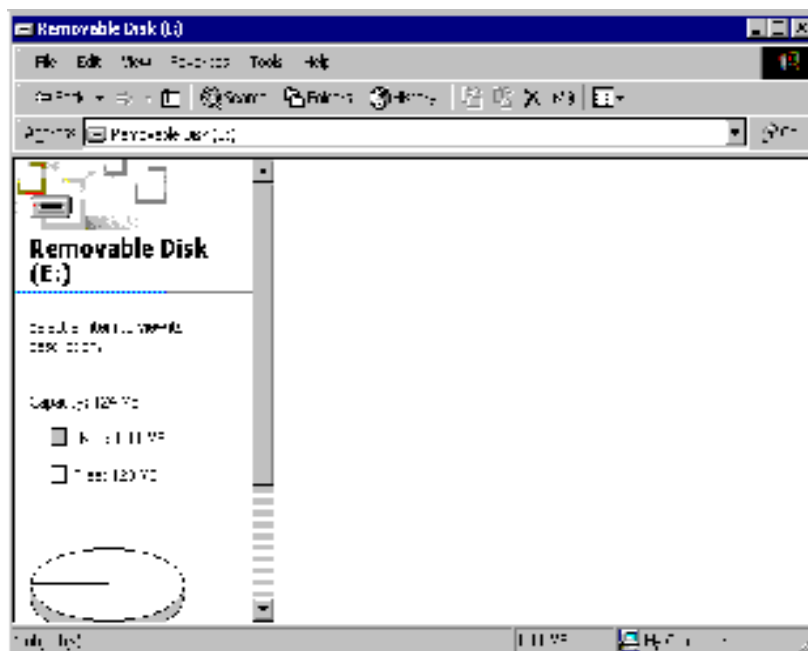
### Logging In



Click “Log In.”

Enter Password and click OK to enter the secure area.

The following screen shows when you have successfully logged in.

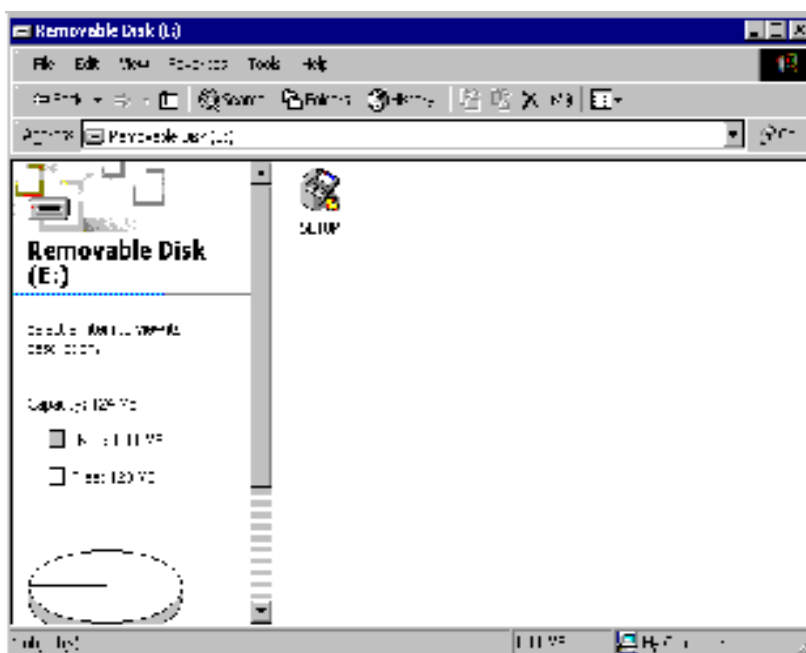


## How to Log Out



Click “Log Out.”

When the following screen appears, you have successfully logged out.



### 3) Resizing

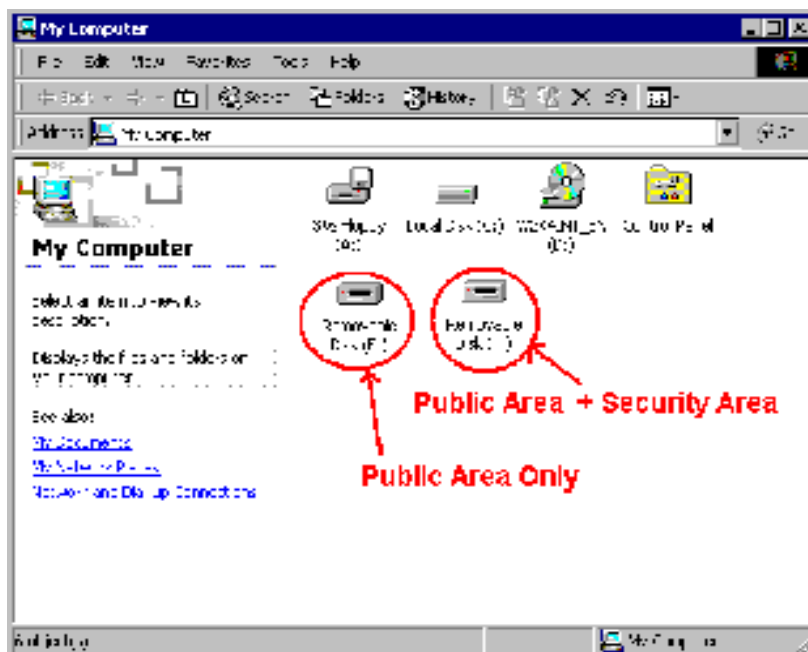
With the Resizing feature, you can freely change the sizes of the Security and Public areas.

**Public Area:** You can read and write in this area without logging in.

**Security Area:** You must log in to read and write data in this area.

**Public Area + Security Area:** The above two areas (Public, Security) can be used simultaneously with 2 drivers.

Ex) When you select Public Area + Security Area, two separate drivers are created.



[Public Area Only]



Click "Resize."

Click OK to run Resize.

Take special care since if you resize to "Public Area Only," the security feature disappears.

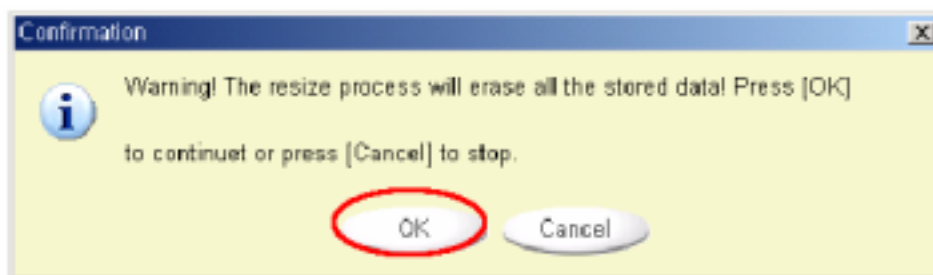
Even if the partition for the Security Area disappears, the Setup.exe file still exists.

### [Security Area]

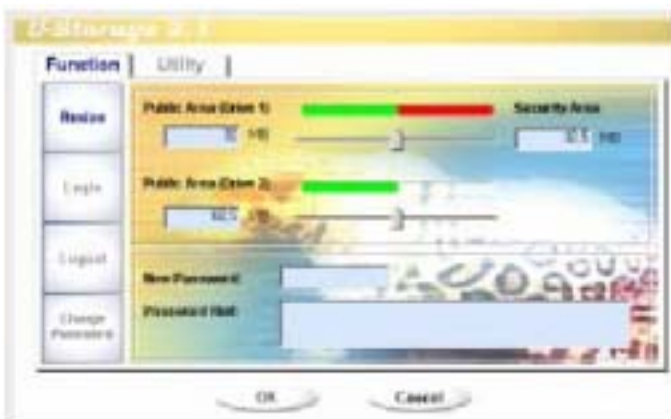


Move the bar left or right on the screen to resize it, and then click OK.

When the following message appears, click "OK." The resize is applied.

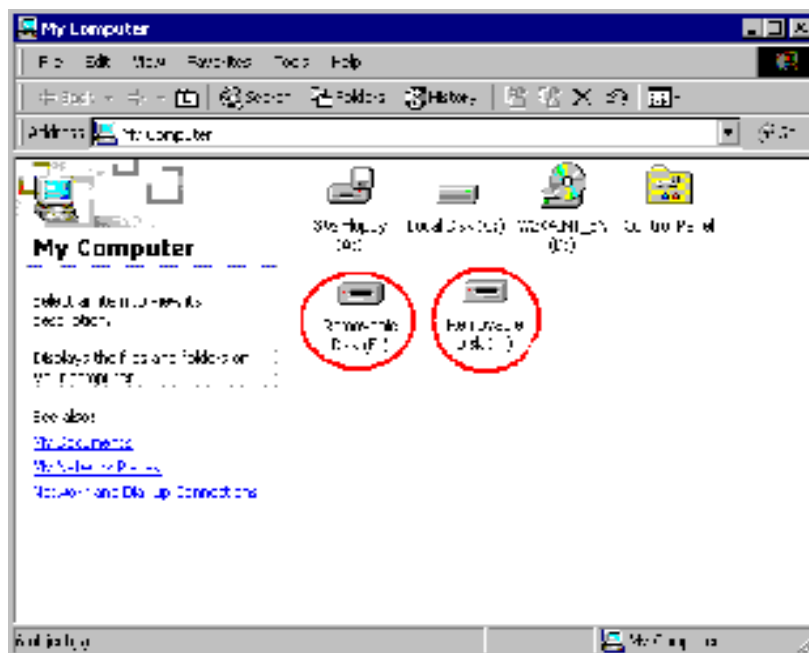


### [Public Area + Security Area]



Set the sizes for each driver on the screen and click OK.

The following two drivers are created.



### 4.3 Boot Up Function

The Boot Up Function enables the device to perform as a boot disk. (The Main Board must provide USB FDD/HDD/ZIP Bootable features).

Read the following before running the program.

- 1) This program runs on Windows 98 SE, ME, or XP.  
(Windows2000 is not supported.)
- 2) Stop the anti-virus program while the program is running.
- 3) A Window's system must be installed on the C Disk.
- 4) This program applies only to one device. (2 or more devices are not supported simultaneously.)
- 5) The device must be in the Public Area.  
(When you use this function when logged in, you will be logged out, and all the data in the Public Area will be deleted.)

**[Note]** If you wish to create a bootable USB HDD, you cannot use the Security Area of the device.

In addition, this option is supported only by Windows 98 SE.

The procedures for Windows 98 SE/Me and XP are different. Please follow the procedures described below. It is not supported by Windows 2000.

#### 4-1 Windows 98 SE / ME

- 1) As shown in the following picture, click on the Utility button, and then the Boot up button.



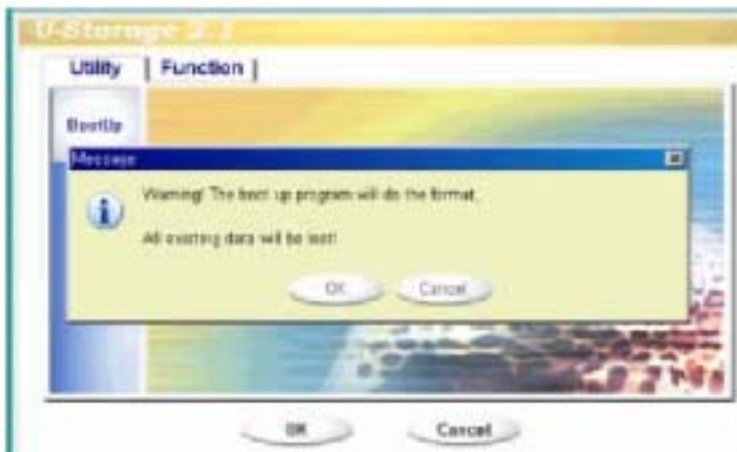
- 2) Select USB HDD or USB ZIP.

USB HDD is supported only for Windows 98 SE.

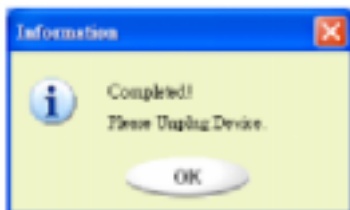
If you select USB HDD, "C: \ >" appears after booting.

If you select USB ZIP, "A: \ >" appears after booting.

- 3) Make your selection and click OK. The following warning message appears.



- 4) When the process is complete, the following message appears.



### [Error Messages]

The following message appears when the Windows OS was not installed properly.  
Create a folder ( \ WINDOWS \ COMMAND \ EBD in Windows 98,  
 \ WINDOWS \ COMMAND \ EBD in Windows ME, or \ XP\_Bootable in Windows XP) and  
copy system files to the folder.



The following message appears when the size of the Public Area is insufficient.  
Increase the size of the Public Area by using the Resize function.



**[Note]** When you carry out the above procedure, the booting files are created on the device. Make sure to prevent them from being erased. If they are erased, normal booting is impossible.

## 4.4 Recovery Disk

This feature is used when you wish to initialize the device because you cannot use it due to problems in the device. If there are any bad blocks in the Flash Memory, you can use Scan Disk to initialize it. However, the capacity of the device decreases for bad blocks.

- 1) As shown below, select Start Programs U-Storage Recover Disk on your desktop.







After running Recover Disk, all the files on the device are deleted.

Since the deleted files cannot be recovered, be sure to back up important files before running Recover Disk.

- 2) When you have checked Read & Write Test, Read/Write tests are performed for each block. It takes approximately 1.5 minutes for 16MB.
- 3) Click Start. The Low Level Format is started.



When the process finishes, the following message appears.

