

OnLink Quick Guide

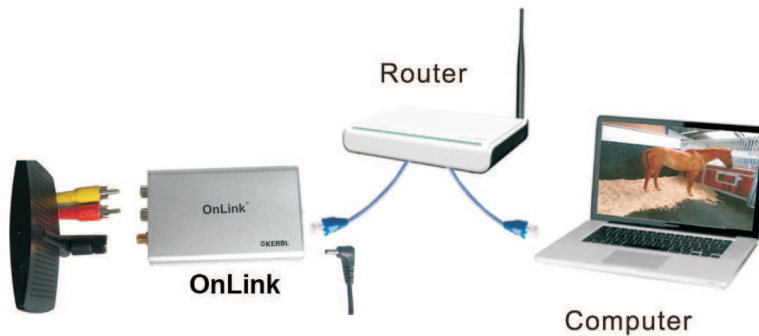


Thank you for purchasing OnLink. This product is intended to work with Kerbl AVLink included in StableCam Set (1085#) and can be accessed remotely from any PC/laptop over Internet via regular web browser (Internet Explore and Safari), Or Smart devices such as iPhone, iPad, Android powered phone and Pad, Or software application (Camera Live) installed on PC. Please read this Quick Guide carefully before installation

Start Here

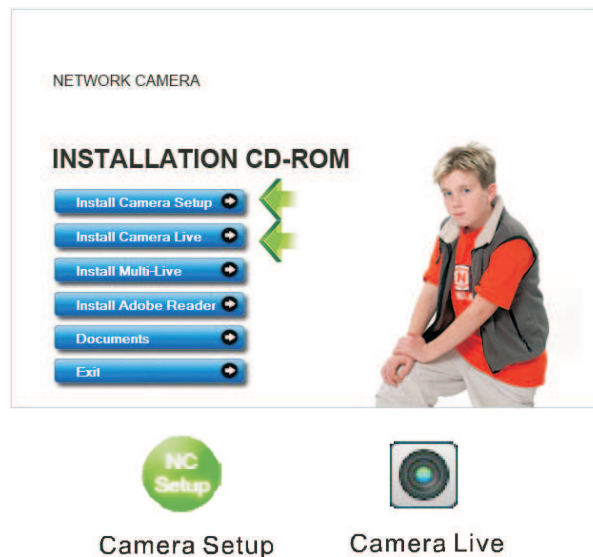
Step1. Connect OnLink to the network

For the first time use, please connect your OnLink and Computer into the same router by network cables.



Step 2. Install OnLink Softwares

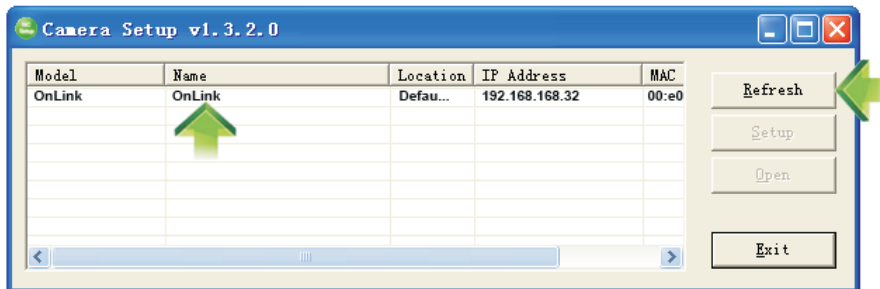
Insert the CD, and click “**Auto Run**”, you’ll see:
Then install “**Camera Setup**”, “**Camera Live**”



First time to view in the browser, Windows will ask your permission to install “Active X” component. Click Allow to install.

Step 3: View on PC via IE Browser

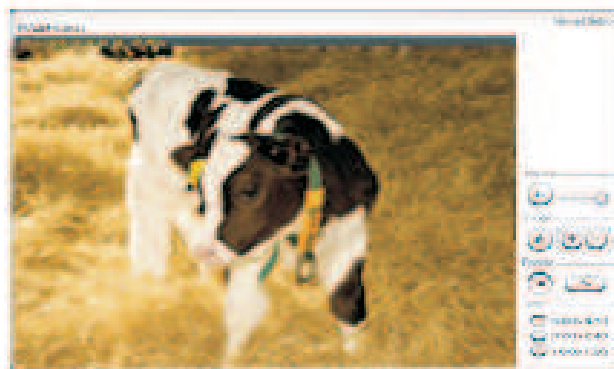
Double click  then appears:




The router will automatically assign OnLink an **IP address**. If not, click “**Refresh**” till it shows up.
Double Click selected OnLink to access it. You’ll see:

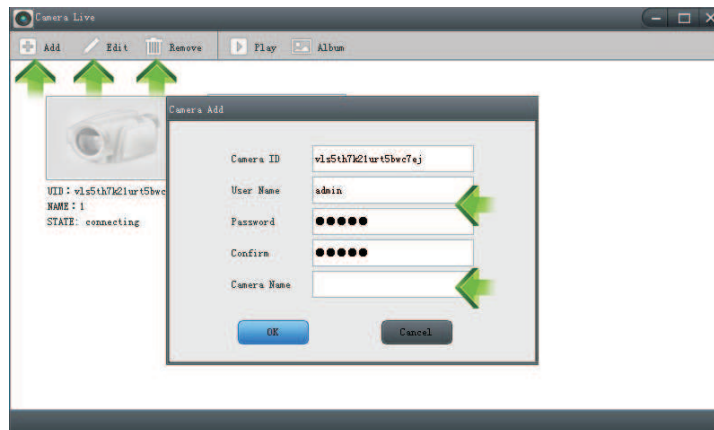


Click “**Enter**”, in the verification box:
User Name: **admin**
Password: **admin**
Click “**OK**” to view!

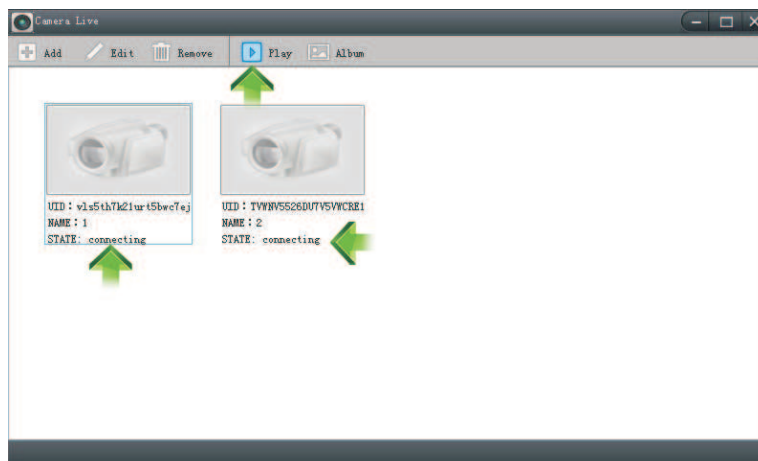


Step 4: View on PC via Camera Live

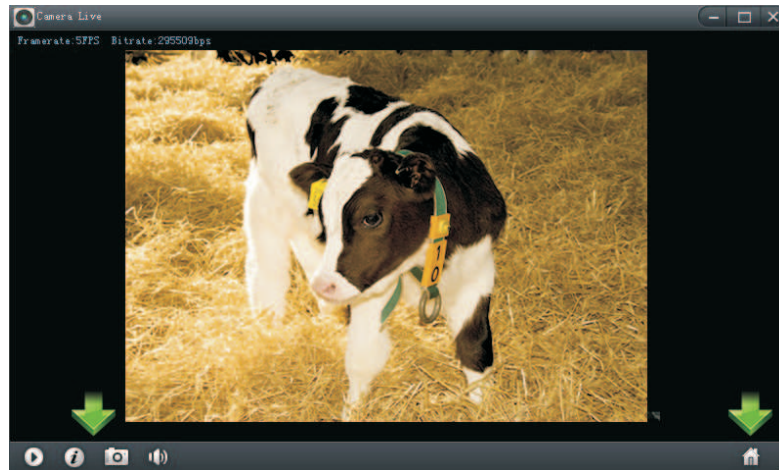
Double click  then appears:




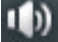



Click “**Add**” to add camera: Input **OnLink UID**, **Password** and **Camera Name**. Then it’s done. Click “**Edit**” to change information.



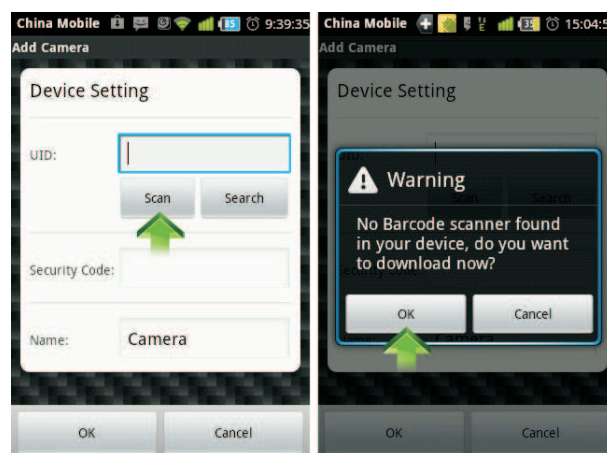
Check the status of OnLink. If not Online ,wait a few seconds till it’s on.
Then **Choose Camera** and click “**Play**”, you’ll see the video.



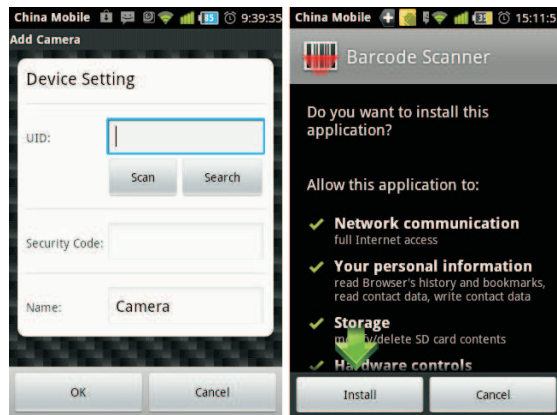
-  Video Pause/Play  Data transmission info
-  Snapshot
-  Activate/Inactivate voice  Home

Step 5: Install the scanner for Android Phone

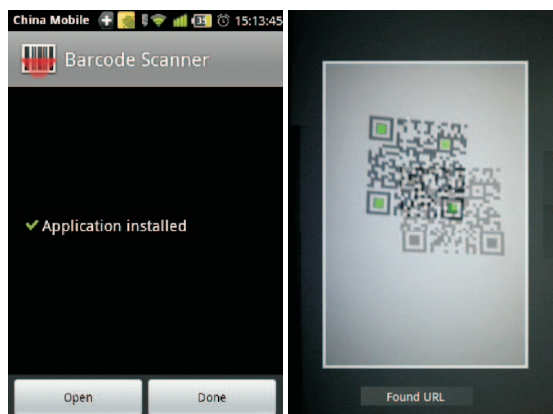
First time to use scan function. Press **"Scan"**.



Press **"OK"** to download the Barcode Scanner



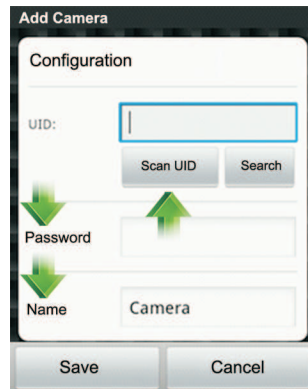
After downloading is finished, Barcode Scanner installation is automatically launched, give permission to install it



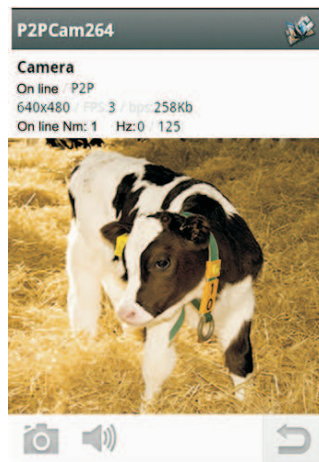
Then press “**Open**” or “**Done**” to finish installation. Now you can scan the UID label pasted on OnLink


Step 6: View on Android phone

Install APP software called "P2PCam264" from Google Play
Open it, you'll see:



Input the **UID** or Scan the **UID**. Input **password** and **name**. Then click "**Save**"



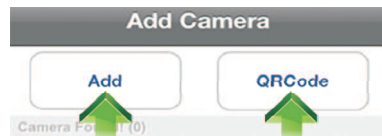
 snapshot

 Back

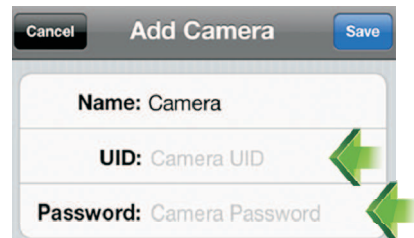
 Voice

Step 7: View on iPhone,iPad

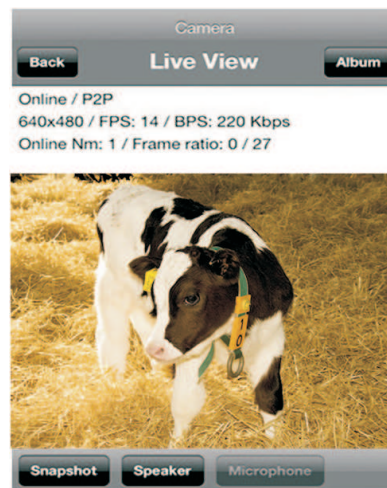
Install APP software"P2PCam264"
Open it, you'll see:



Click "**QRCode**" to scan **UID**.
Or click "**Add**" to manually input **UID**



Input"**UID**" and "**Password**".
Then you'll see:



"**Snapshot**" for taking pictures.
"**Speaker**" for hearing the voice.

Step 8: Wireless Setup

8.1. Automatic WiFi setup via WPS

Press the OnLink WPS button,
then router WPS button in 2 minutes. It's done!

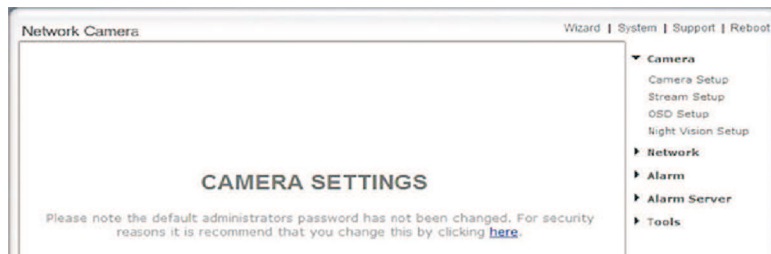


8.2. Manual WiFi Setup

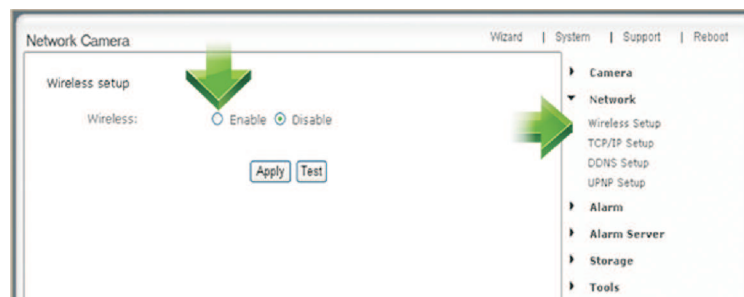
Click on "Setting"



Then appear



Click "**Network**", then "**Wireless Setup**"



Click “**Enable**”, then appear:

Network Camera

Wizard | System | Support | Reboot

Wireless setup

Wireless: ☒ Enable ☐ Disable

SSID: wirelessnc

Mode: Infrastructure
(select Infrastructure mode if using wireless router.)

Security mode: Off

Camera

Network

Wireless Setup

TCP/IP Setup

DDNS Setup

UPNP Setup

Alarm

Alarm Server

Storage

Tools

Click “**Search**”, to find your Wifi.

Network Camera

Wizard | System | Support | Reboot

SSID list

	SSID	Mode	Channel	Auth	Encrypt	Signal
<input checked="" type="radio"/>	wirelessnc	Infrastructure	1	OPEN	NONE	✓
<input type="radio"/>	TP-LINK_56A37A	Infrastructure	6	WPA1PSK/WPA2PSK	TK/AES	✓
<input type="radio"/>	ChinaNet-TZC	Infrastructure	1	WPA/PSK	TCP	✓
<input type="radio"/>	ANBAOSH ASUS	Infrastructure	6	OPEN	NONE	✓
<input type="radio"/>	TP-LINK_40C26E	Infrastructure	6	WPA1PSK/WPA2PSK	AES	✓
<input type="radio"/>	RAINBOW	Infrastructure	8	WPA1PSK/WPA2PSK	TCP/AES	✓
<input type="radio"/>	PwayNet	Infrastructure	9	WPA2PSK	AES	✓
<input checked="" type="radio"/>	Netgear-anbosh	Infrastructure	11	WPA2PSK	AES	✓
<input type="radio"/>	ChinaNet-VzV1	Infrastructure	11	WPA/PSK	AES	✓

Camera

Network

Wireless Setup

TCP/IP Setup

DDNS Setup

UPNP Setup

Alarm

Alarm Server

Storage

Tools

Choose your router **SSID**(WiFi), Click “**Apply**” then appear “**Wireless Network selected!**”

Network Camera

Wizard | System | Support | Reboot

Wireless Network selected!

Wireless setup

Wireless: ☒ Enable ☐ Disable

SSID: Netgear-anbosh

Mode: Infrastructure
(select Infrastructure mode if using wireless router.)

Security mode: WPA2-PSK

Encryption type: AES

WPA key: *****

Re-type WPA key: *****

Camera

Network

Wireless Setup

TCP/IP Setup

DDNS Setup

UPNP Setup

Alarm

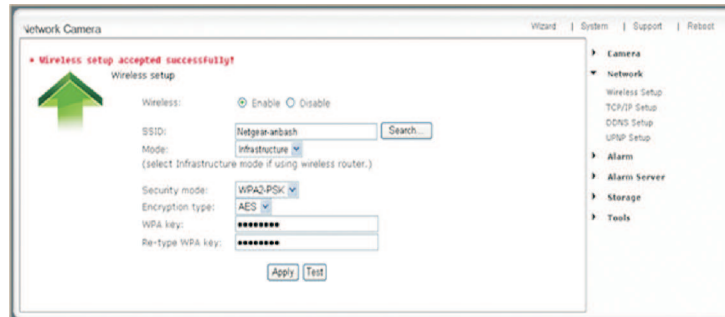
Alarm Server

Storage

Tools

Then input your router encryption mode and WiFi password and click “**Apply**”. You’ll see:

“Wireless Setup Accepted Successfully!”

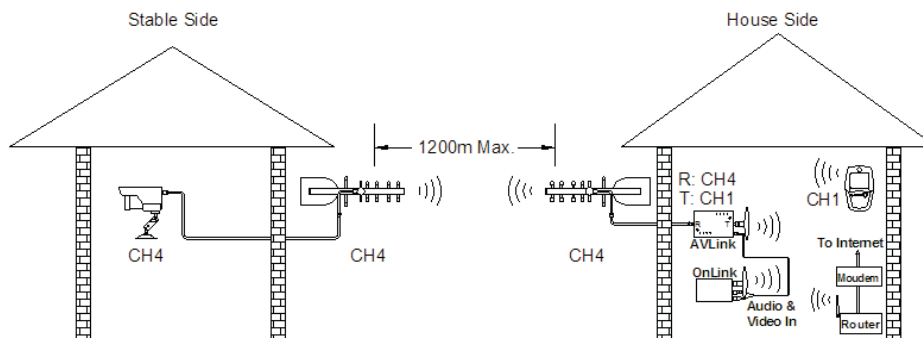


Now you can unplug the network cable!

Step 9: Setup OnLink with Kerbl StableCam

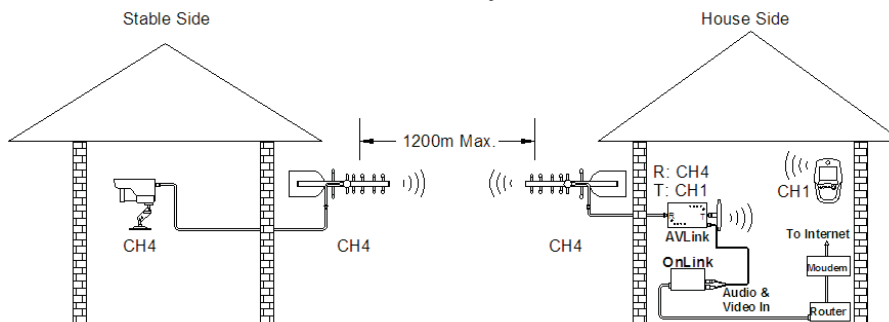
9.1. Wireless connection via WiFi

AVLink output signal into OnLink via cable,
then OnLink connect to internet by WiFi via router.



9.2. Wired connection via Ethernet cable:

AVLink output signals into OnLink via cable, then
OnLink connect to Internet by Ethernet cable via router



Frequently asked questions

1. Q: What shall I do if I can not find OnLink on the list of "camera setup" even I have clicked the "Refresh" button?

A: 1). Check if PC and OnLink both are connected to router by network cable;
2). Check if the power of OnLink and router is turned on.

2. Q: What if video and audio signal is not displayed?

A: 1). Check if the camera signal is sent out by monitor;
2). Check if the receiving channel of AVLink matches camera;
3). Check if the AV cable is correctly connected between AVLink and OnLink.

3. Q: Using P2PCam 264, Why I only see black screen in my iPhone, iPad, Android?

A: The video size is too big. The network speed is too slow. Get to the setting, choose low quality, then you'll see fluent videos. (Details see the manual in CD)

4. For more FAQ see the manual In CD.

FCC Statement:

This equipment has been tested and found to comply with the limits for a Class B digital device, pursuant to Part 15 of the FCC Rules. These limits are designed to provide reasonable protection against harmful interference in a residential installation. This equipment generates, uses and can radiate radio frequency energy and, if not installed and used in accordance with the instructions, may cause harmful interference to radio communications. However, there is no guarantee that interference will not occur in a particular installation. If this equipment does cause harmful interference to radio or television reception, which can be determined by turning the equipment off and on, the user is encouraged to try to correct the interference by one or more of the following measures:

- Reorient or relocate the receiving antenna.
- Increase the separation between the equipment and receiver.
- Connect the equipment into an outlet on a circuit different from that to which the receiver is connected.
- Consult the dealer or an experienced radio/TV technician for help.

This device complies with part 15 of the FCC Rules. Operation is subject to the following two conditions:

(1) This device may not cause harmful interference, and (2) this device must accept any interference received, including interference that may cause undesired operation.

Changes or modifications not expressly approved by the party responsible for compliance could void the user's authority to operate the equipment.

The antenna(s) used for this transmitter must be installed to provide a separation distance of at least 20 cm from all persons and must not be co-located or operating in conjunction with any other antenna or transmitter.