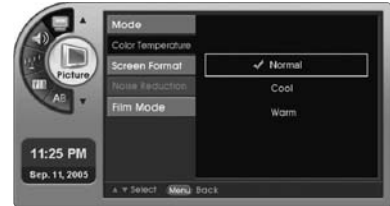


Screen Color Settings

- 1 Press [MENU]. -The menu will appear.
- 2 Press [▲▼] to move to <Picture>, then press [OK].
-The <Picture> Menu will appear.
- 3 Press [▲▼] to move to <Color Temperature>, then press [OK].
-The <Color Temperature> Menu will appear.
- 4 Press [▲▼] to move to a menu.
-Press [▲▼] to move to <Normal>, <Cool> or <Warm>.
- 5 Press [EXIT] to exit the menu.

Useful Tips

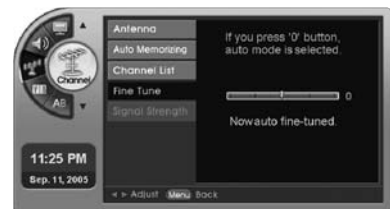
- The PC and HDMI inputs support not only screen color mode but also R,G,B custom mode functions.
- The screen color mode and custom adjustment value (PC,HDMI) are saved individually (TV,AV1,2, S-VIDEO etc).



Unstable Screen

If a dashed line or no color appears, the screen is unstable, therefore try channel adjustments.
(This is only available for analog broadcasting.)

- 1 Press [MENU]. -The menu will appear.
- 2 Press [▲▼] to move to <Channel>, then press [OK].
-The <Channel> Menu will appear.
- 3 Press [▲▼] to move to <Fine Tune>, then press [OK].
-The <Fine Tune> Menu will be selected.
- 4 Press [▲▼] to adjust.
- 5 Press [EXIT] to exit the menu.



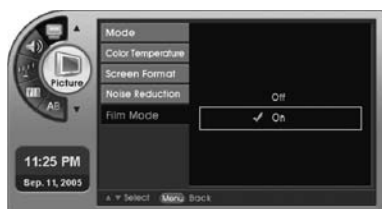
Undoing a channel adjustment

- 1 From step 4 above, pressing number '0' [0] will change the value to '0' and automatically make minor channel adjustments.
- 2 If minor channel adjustment is on manual, then changing to the current channel will not perform automatic channel adjustment.



Film Mode Settings

Set your selection to <ON> to watch your movies titles at the best quality. You will be able to watch with a more realistic movie screen.



- 1 Press [MENU]. -The menu will appear.
- 2 Press [▲ ▼] to move to <Picture>, then press [OK].
-The <Picture> Menu will appear.
- 3 Press [▲ ▼] to move to <Film Mode>, then press [OK].
-The <Film Mode> Menu will appear.
- 4 Press [▲ ▼] to move to <On>.
-Press [▲ ▼] to toggle <Film Mode> between <Off> and <On>.
- 5 Press [EXIT] to exit the menu.

Useful Tips

- Even if film mode is activated, the signal status may take precedence.

Adjusting the Screen Size

You can select the size of the screen depending on the type of program.



- 1 Press [MENU]. -The menu will appear.
- 2 Press [▲ ▼] to move to <Picture>, then press [OK].
-The <Picture> Menu will appear.
- 3 Press [▲ ▼] to move to <Screen Format>, then press [OK].
-The <Screen Format> Menu will appear.
- 4 Press [▲ ▼] to select a <Screen Format>. -The screen size will be selected.
- 5 Press [EXIT] to exit the menu.

Useful Tips

- Depending on the input signal, the screen size may not be selected.
- The screen size may be saved individually according to the input signal (digital TV, analog TV, external input1,2, S-video etc).



Press [ASPECT]
Each press switches between
<16:9>, <Panorama>, <Zoom1>,
<Zoom2> and <4:3>.

Useful Tips

- Some screen modes might not be selectable depending on the input signal.
- While watching digital broadcasting or if the input mode is HDMI or via PC, only the 4:3 or 16:9 screens can be selected.
- For HDMI input, the screen size selection can be either PC mode or TV mode. The difference is the ratio of the amount cut left, right, at the top and below.


Screen Size Menu

- **16:9** : The screen size for DVDs or wide broadcast programs.
- **Panorama** : A 16:9 screen shown as naturally as a 4:3 screen.
- **Expansion** : Expands the 4:3 screen sideways and shows only the center area.
- **Caption Expansion** : A 16:9 screen shown as naturally as a 4:3 screen.
- **4:3** : For video and the current broadcast screen ratio.

⚠ If you force a still picture or use the basic (4:3) screen over a long time, then the LCD TV can show some residual images. These problems are not covered by the warranty. If possible try to utilise full screen mode.

Capturing a Still screen

You can pause a scene on the screen.

 Press [**STILL**].

Each press of the button will capture a still image.

Useful Tips

- Audio will continue to operate while the screen is paused.
- Pressing a channel number or input signal will automatically cancel the function.



Digital Audio Output Settings

You can select your digital audio output as <Dolby Digital> or <PCM>.

- 1 Press [**MENU**]. -The menu will appear.
- 2 Press [**▲▼**] to move to <Sound>, then press [**OK**].
-The <Sound> Menu will appear.
- 3 Press [**▲▼**] to move to <Digital Output>, then press [**OK**].
-The <Digital Output> Menu will appear.
- 4 Press [**▲▼**] to move to <Dolby digital> or <PCM>, then press [**OK**].
-With Digital sound, <Dolby digital> or <PCM> will be output.
- 5 Press [**EXIT**] to exit the menu.



Dolby Digital



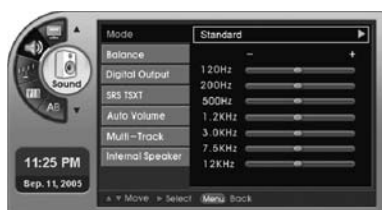
This product is under licence of Dolby Laboratories.
The "Dolby" or D symbol is a trademark of Dolby Laboratories.

Useful Tips

- <Dolby digital> can be selected while a digital broadcast is on or HDMI is connected.
- HDMI can only be used when dolby digital audio is allowed. If not, PCM will be output no matter what mode has been set.
- PCM (Pulse Coded Modulation): A digital signal without compression; with optical output your sound output will be used for the AV Amp that cannot support Dolby Digital 5.1 channel.

Sound Mode Settings

You can adjust the mode to Music, Movie, Sports, or News depending on the type of program you are watching.



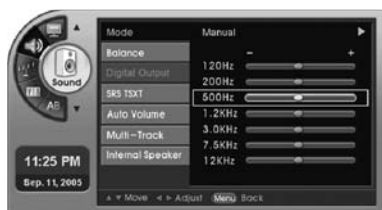
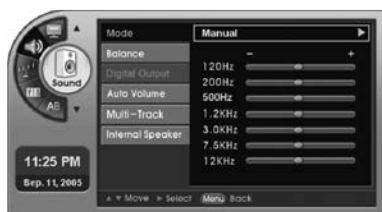
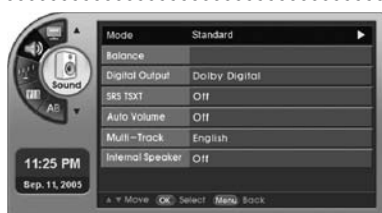
- 1 Press [MENU]. -The menu will appear.
- 2 Press [▲ ▼] to move to <Sound>, then press [OK].
-The <Sound> Menu will appear.
- 3 Press [▲ ▼] to move to <Mode>, then press [OK].
-The <Mode> Menu will appear.
- 4 Press [▶] to select a sound mode.
-Pressing [▶] will change the settings to <Standard>, <Music>, <Movie>, <News>, <Sports> or <Manual>.
- 5 Press [EXIT] to exit the menu.

Sound mode

- **Standard** : Basic sound mode.
- **Music** : Experience live and natural sound.
- **Movie** : Experience the marvels of surround sound as in a movie theater.
- **Sports** : Experience the passion of the real playground.
- **News** : You can hear the sound of the news anchor clearly.
- **Manual** : You can create your own sound mode.

Custom Sound Mode Settings

You can adjust low/high sound as required.



- 1 Press [MENU]. -The menu will appear.
- 2 Press [▲ ▼] to move to <Sound>, then press [OK].
-The <Sound> Menu will appear.
- 3 Press [▲ ▼] to move to <Mode>, then press [OK].
-The <Mode> Menu will appear.
- 4 Press [▲ ▼] to select <Manual> mode.
-The <Manual> menu will appear.
- 5 Press [▲ ▼] to select either low or high sound as required,
then press [◀ ▶] to change the volume.
-Adjust to low or high sound.
- 6 Press [EXIT] to exit the menu.

Useful Tips

- You can use the equalizer to adjust <Standard>, <Music>, <Movie>, <Sports>, <News> mode to change the <Mode> to <Manual>.

Sound Balance Settings

You can balance your speakers for better sound quality.

- 1 Press [MENU]. -The menu will appear.
- 2 Press [▲ ▼] to move to <Sound>, then press [OK].
-The <Sound> Menu will appear.
- 3 Press [▲ ▼] to move to <Balance>, then press [OK].
-The <Balance> Menu will appear.
- 4 Press [◀ ▶] to change the sound to the left/right.
-You can adjust the volume of the left/right speaker.
- 5 Press [EXIT] to exit the menu.



Automatic Volume Control Settings

You can automatically adjust the sound level of different channels to the proper volume level which make it out differently from each channel.

- 1 Press [MENU]. -The menu will appear.
- 2 Press [▲ ▼] to move to <Sound>, then press [OK].
-The <Sound> Menu will appear.
- 3 Press [▲ ▼] to move to <Auto Volume>, then press [OK].
-The <Auto Volume> Menu will appear.
- 4 Press [▲ ▼] to move to <On> or <Off>, then press [OK].
- 5 Press [EXIT] to exit the menu.



Sound (Digital Broadcasting) Settings

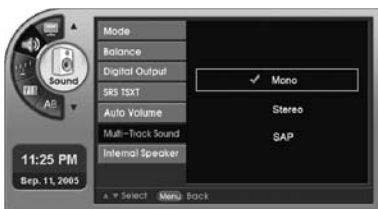


Press [MTS] to listen to other languages.

- When English is set as the primary language, pressing [MTS] will change between <English>, <Spanish>, and <French> in this order. (Languages are only available when provided by a broadcasting station.)
- When changing the channel, the set language will be selected.

- 1 Press [MENU]. -The menu will appear.
- 2 Press [▲ ▼] to move to <Sound>, then press [OK].
-The <Sound> Menu will appear.
- 3 Press [▲ ▼] to move to <Multi-Track>, then press [OK].
-The <Multi-Track> Menu will appear.
- 4 Press [▲ ▼] to select <English>, <Spanish>, or <French>, then press [OK].
-The sound settings primarily set up the language. But in the menu, you can select your favorite language settings no matter what the broadcasting status.
- 5 Press [EXIT] to exit the menu.

Sound (Analog Broadcasting) Settings



Press [MTS].

- You can select your favorite settings <Mono>, <Stereo> or <SAP>.

- 1 Press [MENU]. -The menu will appear.
- 2 Press [▲ ▼] to move to <Sound>, then press [OK].
-The <Sound> Menu will appear.
- 3 Press [▲ ▼] to move to <Multi-Track>, then press [OK].
-The <Multi-Track> Menu will appear.
- 4 Press [▲ ▼] to move to <Mono>, <Stereo> or <SAP>, then press [OK].
-The selected sound will be set.
- 5 Press [EXIT] to exit the menu.

While Mono is on air

- All modes will have mono sound.

While Stereo is on air

- **Mono** : Mono sound is selected.
- **Stereo** : Stereo sound is selected.
- **SAP** : Mono sound is selected.

While SAP is on air

- **Mono** : Mono sound is selected.
- **Stereo** : Mono sound is selected.
- **SAP** : SAP sound is selected.

Useful Tips

- ✦ The sound settings are only supported in TV (analog broadcast) mode.
- ✦ <Stereo>, <SAP> will only operate when a network signal is available.

Automatic Time Settings

If you set your auto time setting, your time will be shown through digital broadcast received information.

- 1 Press [MENU]. -The menu will appear.
- 2 Press [▲ ▼] to move to <Setup>, then press [OK].
-The <Setup> Menu will appear.
- 3 Press [▲ ▼] to move to <Time>, then press [OK].
-The <Time> Menu will appear.
- 4 Press [▲ ▼] to move to <Clock>, then press [OK].
-The <Clock> Menu will appear.
- 5 Press [▲ ▼] to select <Auto>.
- 6 Press [EXIT] to exit the menu.

Useful Tips

- The time will be set automatically by the digital broadcasting information.
- There may be a slight error in the time depending on the broadcast station.
- Pressing [INFO] will show the current time.



Manual Time Settings

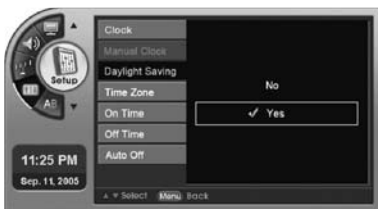
Setting the year, month, day, hours and minutes can be done by pressing the numeric buttons.

- 1 Press [MENU]. -The menu will appear.
- 2 Press [▲ ▼] to move to <Setup>, then press [OK].
-The <Setup> Menu will appear.
- 3 Press [▲ ▼] to move to <Time>, then press [OK].
-The <Time> Menu will appear.
- 4 Press [▲ ▼] to move to <Clock>, then press [OK].
-The <Clock> Menu will appear.
- 5 Press [▲ ▼] to move to <Manual>, then press [OK].
-The <Manual Clock> item can be selected.
- 6 Press [▲ ▼] to move to <Manual Clock>, then press [OK].
- 7 Press [▲ ▼], [◀ ▶] to change the year, month, day, am/pm, hours and minutes.
- 8 Press [EXIT] to exit the menu.



Time and Date Settings

Users can select Daylight Saving.



- 1 Press [MENU]. -The menu will appear.
- 2 Press [▲ ▼] to move to <Setup>, then press [OK].
-The <Setup> Menu will appear.
- 3 Press [▲ ▼] to move to <Time>, then press [OK].
-The <Time> Menu will appear.
- 4 Press [▲ ▼] to move to <Daylight Saving>, then press [OK].
-The <Daylight Saving> Menu will appear.
- 5 Press [▲ ▼] to move to <Yes>, then press [OK].
-Select <Yes> for Daylight Saving, and <NO> to cancel Daylight Saving.
- 6 Press [EXIT] to exit the menu.

Time Zone Settings

Users can select the time zones.



- 1 Press [MENU]. -The menu will appear.
- 2 Press [▲ ▼] to move to <Setup>, then press [OK].
-The <Setup> Menu will appear.
- 3 Press [▲ ▼] to move to <Time>, then press [OK].
-The <Time> Menu will appear.
- 4 Press [▲ ▼] to move to <Time Zone>, then select [OK].
-The <Time Zone> Menu will appear.
- 5 Press [▲ ▼] to move to your local area, then press [OK].
- 6 Press [EXIT] to exit the menu.

TV Activation Time Settings

You can set a time for the TV to automatically turn-on.

- 1 Press [MENU]. -The menu will appear.
- 2 Press [▲ ▼] to move to <Setup>, then press [OK].
-The <Setup> Menu will appear.
- 3 Press [▲ ▼] to move to <Time>, then press [OK].
-The <Time> Menu will appear.
- 4 Press [▲ ▼] to move to <On Time>, then press [OK].
-The <On Time> Menu will appear.
- 5 Press [▲ ▼], [◀ ▶] to set the <AM/PM>, <hours>, <minutes>, <channel>, <volume> and <time period to turn-on>.
- 6 Press [EXIT] to exit the menu.



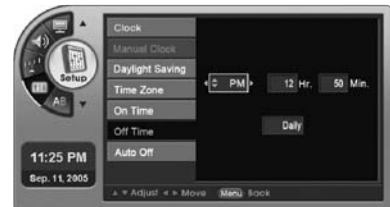
Useful Tips

- The turn on period can be set to <Cancel>, <Everyday> or <Once>.
- <Cancel> : Automatic turn-on will be deactivated.
- <Once> : The TV automatically turns on ONCE at the set time.
- <Everyday> : The TV will turn on everyday at the set time.

TV Deactivation Time Settings

You can select the time to turn off the TV.

- 4 Press [▲ ▼] to move to <Off Time>, then press [OK].
-The <Off Time> Menu will appear.
- 5 Press [▲ ▼], [◀ ▶] to set the <AM/PM>, <hours>, <minutes> and <turn-off period>.
- 6 Press [EXIT] to exit the menu.



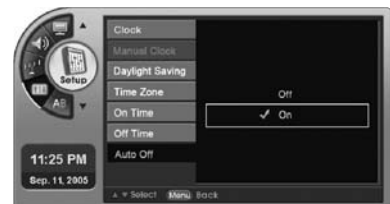
Useful Tips

- The turn-off period can be set to <Cancel>, <Everyday> or <Once>.
- <Cancel> : The TV turn-off time is deactivated.
- <Once> : The TV will turn off Once at the set time.
- <Everyday> : The TV will turn off everyday at the set time.

TV Auto Deactivation Time Settings

If there is no signal on the TV for 15 minutes or more, or if no button is pressed for more than 3 hours, this function turns off the TV automatically.

- 4 Press [▲ ▼] to move to <Auto Off>, then press [OK].
-The <Auto Off> Menu will appear.
- 5 Press [▲ ▼] to select <On>.
- 6 Press [EXIT] to exit the menu.

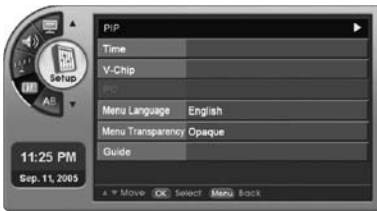


Useful Tips

- If <automatic turn-off> is active, then the TV will turn off when there is no signal on the TV or there is no external input signal for 15 minutes or more.
- If <automatic turn-off> is active and the TV is turned on by the <turn-on> option and no button is pressed for 3 hours, the TV will automatically turn off.

Entering a PIN

This option sets up or changes the password for blocking specific channels.



- 1 Press [MENU].
-The menu will appear.
- 2 Press [▲ ▼] to move to <Setup>, then press [OK].
-The <Setup> Menu will appear.
- 3 Press [▲ ▼] to move to <V-Chip>, then press [OK].
-The <Password Dialog Box> Menu will appear.
When first accessing the V-Chip menu, no password is set up. When no password is set up, channels cannot be blocked. You need to set the password of the <V-chip> then go to <Changing PIN> and set it to <ON>. If a User loses the password, the Master Password needs to be used.
- 4 Enter the 4-digit password (0~9) using the remote control.
-The <V-Chip> Menu will appear.
- 5 Press [▲ ▼] to move to <Changing PIN>, then press [OK].
-The <Changing PIN> Menu will appear.
- 6 Use the keypad to set up the new password.
- 7 Please confirm your password by entering your 4-digit password again using the remote control.
-The password is set or changed.
- 8 Press [▲ ▼] to move to <On/Off>, then press [OK].
-The <On/Off> Menu will appear.
- 9 Press [▲ ▼] to move to <On>, then press [OK].
-You will block certain channels, and you can also select <TVPG Rating>, <MPAA Rating>, <Can.English Rating>, <Can.French Rating>.
Pressing <Off> will unblock the channels.
- 10 Press [EXIT] to exit the menu.

TVPG Rating

You can block programs based on the TV program rating.

- 1 Press [MENU].
-The menu will appear.
- 2 Press [▲ ▼] to move to <Setup>, then press [OK].
-The <Setup> Menu will appear.
- 3 Press [▲ ▼] to move to <V-Chip>, then press [OK].
-The <Password Dialog Box> Menu will appear.
- 4 Enter your 4-digit password using the keypad (0~9).
-The <V-Chip> Menu will appear.
- 5 Press [▲ ▼] to move to <TVPG Rating>, then press [OK].
-The <TVPG Rating> Menu will appear.
- 6 Press [▲ ▼], [◀ ▶] to move to a rating, then press [OK].
-The lock symbol will be marked, and the rating will be set.
Pressing [OK] will display the Unlock symbol and cancel the setting.
- 7 Press [EXIT] to exit the menu.



Useful Tips

Description of the TV (FCC) Rating Codes:

TV (FCC) Age Categories

- **TV-MA** : Mature audiences only. This program may contain mature themes, profane language, graphic violence and explicit sexual content.
- **TV-14** : Parents strongly cautioned. This program may contain sophisticated themes, sexual content, strong language and more intense violence.
- **TV-PG** : Parental guidance suggested. The program may contain infrequent coarse language, limited violence, some suggestive sexual dialog and situations.
- **TV-G** : General audience. This contains little or no violence, no strong language, and little or no sexual dialog or situations.
- **TV-Y7** : Directed for older children. Themes and elements in this program may include mild physical or comedic violence, or may frighten children under the age of seven.
- **TV-Y** : All children. The themes and elements in this program are specifically designed for a very young audience, including children from ages two - six.

TV (FCC) Content Sub-Categories:

- V** : Violence.
- S** : Sexual content.
- L** : Offensive language.
- D** : Dialog...sexual innuendo.
- FV** : Fantasy or cartoon violence.

TV (FCC) Guidelines:

Suppose, for example, the TV-PG rating and all of its V, S, L and D sub-categories are locked. In that case, all of the "more restrictive" ratings (TV-14 and TV-MA) and all of their V, S, L and D sub-categories are automatically locked out as well. The two groups (TV-Y/TV-Y7 and TV-G/TV-PG/TV-14/TV-MA) are controlled independently.

MPAA Ratings

Restricting movies by their rating.



- 1 Press [MENU]. -The menu will appear.
- 2 Press [▲ ▼] to move to <Setup>, then press [OK].
-The <Setup> Menu will appear.
- 3 Press [▲ ▼] to move to <V-Chip>, then press [OK].
-The <Password Dialog Box> Menu will appear.
- 4 Enter your 4-digit password (0~9) using the remote control.
The <V-Chip> Menu will appear.
- 5 Press [▲ ▼] to move to <MPAA Rating>, then press [OK].
-The <MPAA Rating> Menu will appear.
- 6 Press [▲ ▼], [◀▶] to move to a rating, then press [OK].
-The lock symbol will be marked, and the rating will be set.
Pressing [OK] once more will display the Unlock symbol,
and will cancel the rating.
- 7 Press [EXIT] to exit the menu.

Useful Tips

• Description of the MPAA and TV (FCC) Rating Codes:

The MPAA Rating System (Movies)

- **G** : General Audience. No restrictions.
- **PG** : Children under 13 should be accompanied by an adult.
- **PG-13** : Parental guidance suggested. Children under 13 should be accompanied by an adult.
- **R** : Restricted. Viewers should be 17 or older.
- **NC-17** : Not classified. Viewers should be 17 or older.
- **X** : Adults only.

Canadian English Ratings



- 5 Press [▲ ▼] to move to <Can.English Rating>, then press [OK].
-The <Can.English Rating> Menu will appear.
- 6 Press [▲ ▼], [◀▶] to move to a rating limit, then press [OK].
-The lock symbol will be marked, and the rating will be set.
Pressing [OK] will display the Unlock symbols, and limit the view.
- 7 Press [EXIT] to exit the menu.

Canadian French Ratings



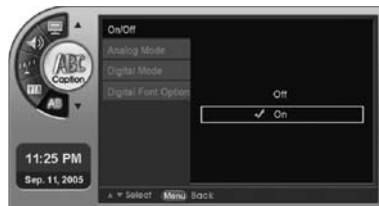
- 5 Press [▲ ▼] to move to <Can.French Rating>, then press [OK].
-The <Can.French Rating> Menu will appear.
- 6 Press [▲ ▼], [◀▶] to select a rating, then press [OK].
-The lock symbol will be appear, and the rating will be set.
Pressing [OK] again will display the Unlock symbol and cancel the rating.
- 7 Press [EXIT] to exit the menu.

Captions Settings

- 1 Press [MENU]. -The menu will appear.
- 2 Press [▲ ▼] to move to <Caption>, then press [OK].
-The <Caption> Menu will appear.
- 3 Press [▲ ▼] to move to <On/Off>, then press [OK].
-The <On/Off> Menu will appear.
- 4 Press [▲ ▼] to move to <On>, then press [OK].
-Captions will be activated.
-Selecting <Off> will cancel the captions.
- 5 Press [EXIT] to exit the menu.

Useful Tips

- When captions are <Off>, in case you can't set up <Analog Mode>, <Digital Mode>, <Digital Font Option> to set up the Caption, setting as <On> may be done.



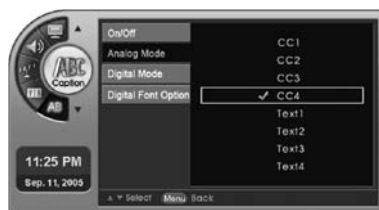
Analog Mode

The Analog Caption function operates in either analog RF channel mode or external input mode (Depending on the broadcasting signal, the Analog Caption function may operate for digital channels.).

- 1 Press [MENU]. -The menu will appear.
- 2 Press [▲ ▼] to move to <Caption>, then press [OK].
-The <Caption> Menu will appear.
- 3 Press [▲ ▼] to move to <Analog Mode>, then press [OK].
-The <Analog Mode> Menu will appear.
- 4 Press [▲ ▼] to move to <CC1~TEXT4>, then press [OK].
-Analog Caption may be selected.
-Selecting <Off> will cancel the Captions.
- 5 Press [EXIT] to exit the menu.

Useful Tips

- If a caption source is not provided by the broadcasting station or by the videotape, subtitles will not be displayed.



Digital Mode

The Digital Caption function operates for digital channels.



- 1 Press [MENU]. -The menu will appear.
- 2 Press [▲▼] to move to <Caption>, then press [OK].
-The <Caption> Menu will appear.
- 3 Press [▲▼] to move to <Digital Mode>, then press [OK].
-The <Digital Mode> Menu will appear.
- 4 Press [▲▼] to move to <Service1~Service6>, then press [OK].
-Digital Caption may be set.
-Selecting <Off> will cancel Digital Captions.
- 5 Press [EXIT] to exit the menu.

Useful Tips

- ✦ If the broadcasting station or videotape does not provide subtitles, there are no viewing captions.
- ✦ Alternate method to the above method: Simply press the <CAPTION> button on the remote control.
- ✦ The availability of captions depends on the particular program being broadcast.

Digital Font Options



- 1 Press [MENU]. -The menu will appear.
- 2 Press [▲▼] to move to <Caption>, then press [OK].
-The <Caption> Menu will appear.
- 3 Press [▲▼] to move to <Digital Font Option>, then press [OK].
-The <Digital Font Option> Menu will appear.
- 4 Press [▲▼] to select <Size~Edge Style>, select the font type mode, then press [OK].
 - **Size:** Adjust the digital caption font size to default, small, standard or large.
 - **Style:** Either default or style0 through style7 can be selected.
 - **Background/Foreground Color:** Either default or from white to cyan can be selected.
 - **Background/Foreground Opacity:** Either default or Solid to Flashing can be selected.
 - **Edge Style:** Either default or none to Right Drop Shadow.
- 5 Press [EXIT] to exit the menu.

Checking Items before Connecting to a PC

Check the list below before connecting a PC to the TV.

Precautions

- Set your resolution and frequency to a resolution supported by the TV.
- Refer to the instructions when connecting a PC (graphics and sound cards).
- Do not connect the power unless all connections are connected.
Severe damage can be caused if the power is connected while the connections are still being connected.
- Check the terminal of the PC Graphics Card.

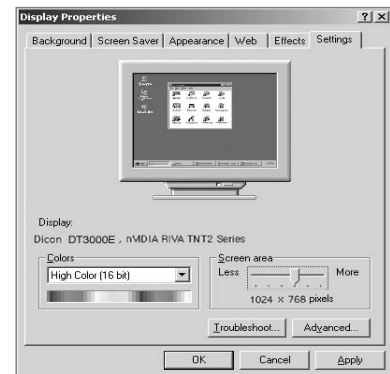
Standard Display Settings

If the signal from the computer is the same as one of the following standards, then your monitor can be set up automatically. But if it is different, only the power light will be on or there is no screen at all. So please refer to your instruction manual and adjust the frequency accordingly.

Resolution (dot x line)	Vertical Frequency [Hz]	Horizontal Frequency [KHz]	Clock Frequency [MHz]
640 X 350	85	37.9	31.500
720 X 400	70	37.9	35.500
640 X 480	60	31.5	25.175
640 X 480	75	37.5	31.500
800 X 600	60	37.9	40.000
800 X 600	75	46.9	49.500
1024 X 768	60	48.4	65.000
1024 X 768	75	60.0	78.750
1024 X 768	85	68.7	94.500
1366 X 768	60	47.7	84.250

PC Settings

- 1 First, click on **Settings** on the Windows **Start** menu and click on **"Control Panel"**.
- 2 Double click on the **Display** icon.
- 3 Click the **"Settings"** tab, and select the correct TV-supported screen resolution. You do not need to adjust the color quality.
- 4 Click the **"Advanced"** button. A new window will appear.
- 5 Select the **"Monitor"** tab, and select the correct screen frequency. You can select the vertical & horizontal frequency if you cannot use the screen frequency.
- 6 Press **"OK"**, close the window, and press **"OK"** in the Display Properties window.
- 7 Turn off the PC and connect to the TV.



Useful Tips

- This may differ depending on the PC and Windows version.
- A TV can support up to 32Bit color while being used as a TV monitor.
- The display may differ depending on the manufacturer and the Windows version.
- You have to select a display resolution which is support by the TV when connecting to a PC, (include DVI) otherwise the "Display Mode not supported" message will be displayed.

Identifying Problems

If there are any problems using the product, please first consult the list below.
If the list below does not solve the problem, call our Customer Service Center immediately.

Setup and Connection

Problems	Solve
The TV won't turn on.	<ul style="list-style-type: none"> Check your power cable connection.
I can't view the Basic channels.	<ul style="list-style-type: none"> Check the connection of the antenna cable.
I want to view cable channels.	<ul style="list-style-type: none"> Register with your local cable company then connect their receiver to your TV.
I want to view satellite channels.	<ul style="list-style-type: none"> Setup your Satellite parabola antenna then connect your satellite receiver to the TV.
Digital broadcasting is not functioning.	<ul style="list-style-type: none"> Check your antenna cable connection. Check if the digital channel selection is correctly connected to your antenna cable.

Menu and Remote Control

Problems	Solve
The Remote Control isn't functioning well.	<ul style="list-style-type: none"> Press [input selection] to select the device to play. Change the batteries. Check the polarity of the batteries. Check the angle of the remote control from the product or if there are any obstacles between the remote control and the product. Check if you have pressed the correct key for the correct option. Try to a bright light position near TV's which transmit a strong light source on TV <remote receiver> window.
I cannot change channels with the remote control.	<ul style="list-style-type: none"> Press [input selection] and select <TV>. Try to use the remote control for the cable or satellite receiver to change the channel.
External input channels cannot be selected.	<ul style="list-style-type: none"> Check your external input connection cable.
A Menu cannot be selected.	<ul style="list-style-type: none"> Check if the menu is grayed out, and if it is, that menu cannot be selected.

Sound

Problems	Solve
Poor quality sound	<ul style="list-style-type: none"> Check if the program is in stereo. Stereo may not work well in areas with bad reception. Try using Mono for these areas.
Sound is malfunctioning while using a cable.	<ul style="list-style-type: none"> Check your sound connecting cable. Check if other channels also have no sound. I can see images, but there is no sound. Press the volume buttons to increase the sound. Try watching a video (if the video has sound, check your cable company). If there is no problem with the cable receiver, then call our customer service. Check if the internal speakers are <OFF>.
There is a malfunction after the volume is increased	<ul style="list-style-type: none"> Try to adjust the external devices connected to the TV (Digital channel receiver, DTV, DVD, Cable channel receiver, video) If you can adjust your sound, try to balance the volume of the TV and the external device.

Identifying Problems

Screen

Problems	Solve
Poor picture	<ul style="list-style-type: none"> Is the power cord unplugged? Make sure the power cable is plugged in correctly, then press the power of the remote control.
Black picture	<ul style="list-style-type: none"> Check if external input mode is selected Press [external input selection] and select TV
Lined and flickering picture.	<ul style="list-style-type: none"> Try to finely adjust the channel. Are there any TV waves flowing or cordless radio transmitting stations? Avoid using cordless phones, hair dryers or electrical drills.
Disfunctioning channels.	<ul style="list-style-type: none"> Check if the channel has been selected correctly. Try changing the position of the antenna.
Picture with white and black dots.	<ul style="list-style-type: none"> Check if your antenna is damaged or any connections are broken. Replace your antenna.
Only certain channels are in black and white	<ul style="list-style-type: none"> Check if the program is being broadcast in "black and white". Try to check the hue or contrast.
The Sub-Screen is black.	<ul style="list-style-type: none"> Check the power of the external device connected to the TV. If the power cord is disconnected, the screen will be black.
Automatic turn-on is inactive.	<ul style="list-style-type: none"> When turning off your TV, you need to use the remote control or press the power button on the TV. (If you pull the plug on the TV, the settings will be deleted.)

Channel

Problems	Solve
The channels are not functioning.	<ul style="list-style-type: none"> Connect the antenna connectors again. Set to memorize channels in the automatic channel setting again. Query the particular broadcasting station.
A limited number of channels are not functioning.	<ul style="list-style-type: none"> Change the location or direction of the antenna. Try to select a few channels using numbers and memorize them using the add/delete button. Query the broadcasting station.
Only UHF (14 ~ 69) Channels are unavailable.	<ul style="list-style-type: none"> Check if the antenna is able to receive UHF.

Monitor

Problems	Solve
The PC Screen continually appears and disappears.	<ul style="list-style-type: none"> Check the connection between the TV and the computer and see if the connector is locked.
A "There is no signal" message appears.	<ul style="list-style-type: none"> This happens if the signal from the video card is too much for the maximum resolution or frequency of the TV. Try to set the maximum resolution or frequency for the TV. See if power save mode of the PC functions properly. (This is deactivates when any key is pressed or the mouse is moved)
The screen is unclear and blurry.	<ul style="list-style-type: none"> Change the frequency and phase adjustment. Change the Resolution and frequency to the standard limit. (1024x768 @ 60Hz)

Specifications

Model name			TF-TV2609
LCD	Size		26" Diagonal
	Display Size		580.8 mm (H) x 328.8 mm (V)
	Pixel Pitch		0.1405 mm (H) x 0.4215 mm (V)
	Pixel Number		1366 x 768 (WXGA)
	Type		a-Si TFT active matrix
	Brightness		500 cd / m ²
	Contrast Ratio		600 : 1
	Viewing Angle		176°(H) / 176°(V)
RF	Air		2ch ~ 69ch
	Cable		1ch ~ 139ch
TV	Video System		NTSC-M (Analog), ATSC (Digital)
	Sound System		MTS
VIDEO	Color System		NTSC-M
	Video System		CVBS, S-VHS
Component	Video Input		480i, 480p, 720p, 1080i
	Audio Input		500mVrms
PC	Frequency	Horizontal	30 ~ 60kHz
		Vertical	60 ~ 75Hz
	Display Colors		16,7 million
	Resolution	Maximum	1280 x 1024, 60 Hz
		Optimum	1366 x 768, 60 Hz
	Input Signal	Sync.	
Video Signal		VHF, UHF : 75 ohm unbalanced	
Audio Output			7W + 7W (2Way 4Speaker, 8Ω)
Power Supply			Internal Type AC 110 ~ 240V, 50 / 60Hz
Power Consumption			Max. 115W
Stand-by Mode			< 3W
Dimension (W x H x D)			27" x 21.5" x 4.1" (Stand 8.5")
Weights			44.1 lbs
Accessories			Remote Control, Battery (AAA type), Operating Instructions Power Cord

Design and specifications are subject to change without notice.

Model name			TF-TV3209
LCD	Size		32" Diagonal
	Display Size		697.69 mm (H) x 392.25 mm (V)
	Pixel Pitch		0.170 mm (H) x 0.510 mm (V)
	Pixel Number		1366 x 768 (WXGA)
	Type		a-Si TFT active matrix
	Brightness		500 cd / m ²
	Contrast Ratio		600 : 1
	Viewing Angle		176°(H) / 176°(V)
RF	Air		2ch ~ 69ch
	Cable		1ch ~ 139ch
TV	Video System		NTSC-M (Analog), ATSC (Digital)
	Sound System		MTS
VIDEO	Color System		NTSC-M
	Video System		CVBS, S-VHS
Component	Video Input		480i, 480p, 720p, 1080i
	Audio Input		500mVrms
PC	Frequency	Horizontal	30 ~ 60kHz
		Vertical	60 ~ 75Hz
	Display Colors		16,7 million
	Resolution	Maximum	1280 x 1024, 60 Hz
		Optimum	1366 x 768, 60 Hz
	Input Signal	Sync.	
Video Signal		VHF, UHF : 75 ohm unbalanced	
Audio Output			7W + 7W (2Way 4Speaker, 8Ω)
Power Supply			Internal Type AC 110 ~ 240V, 50 / 60Hz
Power Consumption			Max. 145W
Stand-by Mode			< 3W
Dimension (W x H x D)			31.9" x 25" x 4.1" (Stand 9.7")
Weights			55.1 lbs
Accessories			Remote Control, Battery (AAA type), Operating Instructions Power Cord

Design and specifications are subject to change without notice.

Specifications

Model name			TF-TV3709
LCD	Size		37" Diagonal
	Display Size		819.6 mm (H) x 460.8 mm (V)
	Pixel Pitch		0.20 mm (H) x 0.60 mm (V)
	Pixel Number		1366 x 768 (WXGA)
	Type		a-Si TFT active matrix
	Brightness		500 cd / m ²
	Contrast Ratio		600 : 1
	Viewing Angle		176°(H) / 176°(V)
RF	Air		2ch ~ 69ch
	Cable		1ch ~ 139ch
TV	Video System		NTSC-M (Analog), ATSC (Digital)
	Sound System		MTS
VIDEO	Color System		NTSC-M
	Video System		CVBS, S-VHS
Component	Video Input		480i, 480p, 720p, 1080i
	Audio Input		500mVrms
PC	Frequency	Horizontal	30 ~ 60kHz
		Vertical	60 ~ 75Hz
	Display Colors		16,7 million
	Resolution	Maximum	1280 x 1024, 60 Hz
		Optimum	1366 x 768, 60 Hz
Input Signal	Sync.		H/V Separate, TTL, P or N
	Video Signal		VHF, UHF : 75 ohm unbalanced
Audio Output			15W + 15W (2Way 4Speaker)
Power Supply			Internal Type AC 110 ~ 240V, 50 / 60Hz
Power Consumption			Max. 190W
Stand-by Mode			< 3W
Dimension (W x H x D)			37.1" x 28.5" x 5" (Stand 11.1")
Weights			70.6 lbs
Accessories			Remote Control, Battery (AAA type), Operating Instructions Power Cord

Design and specifications are subject to change without notice.

Model name			TF-TV4209
LCD	Size		42" Diagonal
	Display Size		930.25 mm (H) x 523.01 mm (V)
	Pixel Pitch		0.227 mm (H) x 0.681 mm (V)
	Pixel Number		1366 x 768 (WXGA)
	Type		a-Si TFT active matrix
	Brightness		500 cd / m ²
	Contrast Ratio		500 : 1
	Viewing Angle		176°(H) / 176°(V)
RF	Air		2ch ~ 69ch
	Cable		1ch ~ 139ch
TV	Video System		NTSC-M (Analog), ATSC (Digital)
	Sound System		MTS
VIDEO	Color System		NTSC-M
	Video System		CVBS, S-VHS
Component	Video Input		480i, 480p, 720p, 1080i
	Audio Input		500mVrms
PC	Frequency	Horizontal	30 ~ 60kHz
		Vertical	60 ~ 75Hz
	Display Colors		16,7 million
	Resolution	Maximum	1280 x 1024, 60 Hz
		Optimum	1366 x 768, 60 Hz
	Input Signal	Sync.	
Video Signal		VHF, UHF : 75 ohm unbalanced	
Audio Output			15W + 15W (2Way 4Speaker)
Power Supply			Internal Type AC 110 ~ 240V, 50 / 60Hz
Power Consumption			Max. 210W
Stand-by Mode			< 3W
Dimension (W x H x D)			43" x 31.9" x 5.5" (Stand 11.1")
Weights			83.8 lbs
Accessories			Remote Control, Battery (AAA type), Operating Instructions Power Cord

Design and specifications are subject to change without notice.

