

FCC SAR TEST REPORT

Test File No : F690501/RF-SAR002170-A1

Equipment Under Test	Wireless Phone
Model No.	ICW-1000G
Applicant	INCOM CO., Ltd
Address of Applicant	4FL, Ace Techno Tower 3, 405, 38, Digital-ro29-gil, Guro-gu, Seoul, Korea
FCC ID	RLFICW-1000G
Device Category	Portable Device
Exposure Category	General Population/Uncontrolled Exposure
Standards	FCC 47 CFR Part 2 (2.1093) IEEE 1528, 2003 ANSI/IEEE C95.1, C95.3
Date of Test(s)	2014-04-14
Date of Issue	2014-04-29

In the configuration tested, the EUT complied with the standards specified above.

Remarks:

This report details the results of the testing carried out on one sample, the results contained in this test report do not relate to other samples of the same product. The manufacturer should ensure that all products in series production are in conformity with the product sample detailed in this report. This report may only be reproduced and distributed in full. If the product in this report is used in any configuration other than that detailed in the report, the manufacturer must ensure the new system complies with all relevant standards. Any mention of SGS Korea Co., Ltd. or testing done by SGS Korea Co., Ltd. in connection with distribution or use of the product described in this report must be approved by SGS Korea Co., Ltd. in writing.



Report prepared by /
Jongwon Ma
Test Engineer



Approved by /
Nicky You
Technical Manager

**SGS Korea Co., Ltd.**

4, LS-ro 182beon-gil, Gunpo-si, Gyeonggi-do, 435-040

Tel. 031-428-5700 / Fax. 031-427-2371

<http://www.sgsgroup.kr>

Page : 2 / 55

Revision history

Revision	Date of issue	Revisions	Revised By
Initial issue	April 21, 2014	-	-
A1	April 29, 2014	Section 5: Updated KDB Publication versions list	Jongwon Ma

Contents

1	Testing Laboratory	4
2	Details of Applicant	4
3	Description of EUT(s)	4
4	The Highest Reported SAR Values	4
5	Test Methodology	5
6	Test Environment	6
7	Specific Absorption Rate (SAR)	6
7.1	Introduction	6
7.2	SAR Definition	6
7.3	Test Standards and Limits	6
8	The SAR Measurement System	8
9	System Components	9
9.1	Probe	9
9.2	ELI Phantom	9
9.3	Device Holder	10
10	SAR Measurement Procedures	11
10.1	Normal SAR Measurement Procedure	11
11	SAR System Verification	13
12	Tissue Simulant Fluid for the Frequency Band	14
13	Test System Validation	15
14	Instruments List	16
15	Operation Configuration	17
16	Measured and Reported SAR	17
17	Maximum Output Power Specifications	17
18	RF Conducted Power	17
19	SAR Test Configuration	23
20	SAR Test Exclusions Applied	24
21	SAR Data Summary	25
22	SAR Measurement Variability	26
22.1	Measurement Variability	26
22.2	Measurement Uncertainty	26
	Appendixes List	27
	Appendixes A.1	28
	Appendixes A.2	29
	Appendixes A.3	30
	Appendixes B.1	31
	Appendixes C.1	32
	Appendixes C.2	43
	Appendixes C.3	48
	END	55

1 Testing Laboratory

Company Name	SGS Korea Co., Ltd. (Gunpo Laboratory)
Address	Wireless Div. 4, LS-ro 182beon-gil, Gunpo-si, Gyeonggi-do, 435-040 Republic of Korea
Telephone	+82 +31 428 5700
FAX	+82 +31 427 2371
Homepage	All SGS services are rendered in accordance with the applicable SGS conditions of service available on request and accessible at http://www.sgs.com/en/Terms-and-Conditions.aspx

2 Details of Manufacturer

Applicant	INCOM CO., Ltd
Address	4FL, Ace Techno Tower 3, 405, 38, Digital-ro29-gil, Guro-gu, Seoul, Korea
Contact Person	GeunSik-Hong
Phone No.	82-2-839-7773
E-Mail	gshong@incominc.com

3 Description of EUT(s)

EUT Type	Wireless Phone
Model	ICW-1000G
Serial Number	N/A
Mode of Operation	WLAN
Duty Cycle	1(WLAN)
Body worn Accessory	None
Tx Frequency Range	2412 MHz~ 2462 MHz (WLAN_11b/g/n) 5745 MHz ~ 5825 MHz (WLAN_11a/n)
Battery Type	3.7 V d.c. (Lithium-ion Battery)

4 The Highest Reported SAR Values

Equipment Class	Band & Mode	Tx Frequency	Measured Conducted Power (dBm)	SAR	
				1gm Head (W/kg)	1gm Body-Wom (W/kg)
DTS	2.45 GHz WLAN	2412 ~ 2462 MHz	12.22	0.26	0.10
DTS/NII	5.8 GHz WLAN	5745 ~ 5825 MHz	7.23	N/A	
Simultaneous SAR per KDB 690783 D01v01r03				N/A	

5 Test Methodology

ANSI C95.1–1999: IEEE Standard for Safety Levels with Respect to Human Exposure to Radio Frequency Electromagnetic Fields, 3 kHz to 300 GHz. It specifies the maximum exposure limit of 1.6 W/kg as averaged over any 1 gram of tissue for portable devices being used within 20 cm of the user in the uncontrolled environment.

Test tests documented in this report were performed in accordance with IEEE Standard 1528-2003 & IEEE 1528a-2005 and the following published KDB procedures.

In additions;

<input checked="" type="checkbox"/>	<u>KDB 865664 D01v01r03</u>	SAR Measurement Requirements for 100 MHz to 6 GHz
<input checked="" type="checkbox"/>	<u>KDB 447498 D01v05r02</u>	Mobile and Portable Devices RF Exposure Procedures and Equipment Authorization Policies
<input type="checkbox"/>	KDB 447498 D02v02	SAR Measurement Procedures for USB Dongle Transmitters
<input checked="" type="checkbox"/>	<u>KDB 248227 D01v01r02</u>	SAR Measurement Procedures for 802.11a,b,g Transmitters
<input type="checkbox"/>	KDB 615223 D01v01	802.16e/WiMax SAR Measurement Guidance
<input type="checkbox"/>	KDB 616217 D04v01r01	SAR Evaluation Considerations for Laptop, Notebook, Netbook and Tablet Computers
<input type="checkbox"/>	KDB 643646 D01v01r01	SAR Test Reduction Considerations for Occupational PTT Radios
<input type="checkbox"/>	KDB 648474 D03v01r02	Evaluation and Approval Considerations for Handsets with Specific Wireless Charging Battery Covers
<input checked="" type="checkbox"/>	<u>KDB 648474 D04v01r02</u>	SAR Evaluation Considerations for Wireless Handsets
<input type="checkbox"/>	KDB 680106 D01v02	RF Exposure Considerations for Low Power Consumer Wireless Power Transfer Applications
<input type="checkbox"/>	KDB 941225 D01v02	SAR Measurement Procedures for 3G Devices (CDMA 2000 / Ev-Do, WCDMA/HSDPA/HSPA)
<input type="checkbox"/>	KDB 941225 D02v02r02	SAR Guidance for HSPA, HSPA+, DC-HSDPA and 1x-Advanced
<input type="checkbox"/>	KDB 941225 D03v01	Recommended SAR Test Reduction Procedures for GSM/GPRS/EDGE
<input type="checkbox"/>	KDB 941225 D04v01	Evaluating SAR for GSM/(E)GPRS Dual Transfer Mode
<input type="checkbox"/>	KDB 941225 D05v02r03	SAR Evaluation Considerations for LTE Devices
<input type="checkbox"/>	KDB 941225 D06v01r01	SAR Evaluation Procedures for Portable Devices with Wireless Router Capabilities
<input type="checkbox"/>	KDB 941225 D07v01r01	SAR Evaluation Procedures for UMPC Mini-Tablet Devices

6 Testing Environment

Ambient temperature	18°C ~ 25°C
Relative humidity	30% ~ 70%
Liquid temperature of during the test	< ± 2°C
Ambient noise & Reflection	< 0.012 W/kg

7 Specific Absorption Rate (SAR)

7.1 Introduction

SAR is related to the rate at which energy is absorbed per unit mass in an object exposed to a radio field. The SAR distribution in a biological body is complicated and is usually carried out by experimental techniques or numerical modeling. The standard recommends limits for two tiers of groups, occupational/controlled and general population/uncontrolled, based on a person's awareness and ability to exercise control over his or her exposure. In general, occupational/controlled exposure limits are higher than the limits for general population/uncontrolled

7.2 SAR Definition

The SAR definition is the time derivative (rate) of the incremental energy (dW) absorbed by (dissipated in) an incremental mass (dm) contained in a volume element (dv) of a given density (ρ). The equation description is as below:

$$\text{SAR} = \frac{d}{dt} \left(\frac{dW}{dm} \right) = \frac{d}{dt} \left(\frac{dW}{\rho dv} \right)$$

SAR is expressed in units of Watts per kilogram (W/kg)

SAR measurement can be either related to the temperature elevation in tissue by

$$\text{SAR} = C \left(\frac{\delta T}{\delta t} \right)$$

Where: C is the specific heat capacity, δT is the temperature rise and δt is the exposure duration, or related to the electrical field in the tissue by

$$\text{SAR} = \frac{\sigma |E|^2}{\rho}$$

Where: σ is the conductivity of the tissue, ρ is the mass density of the tissue and E is the RMS electrical field strength.

However for evaluating SAR of low power transmitter, electrical field measurement is typically applied.

7.3 Test Standards and Limits

According to FCC 47CFR §2.1093(d) The limits to be used for evaluation are based generally on criteria published by the American National Standards Institute (ANSI) for localized specific absorption rate ("SAR") in Section 4.2 of "IEEE Standard for Safety Levels with Respect to Human Exposure to Radio Frequency Electromagnetic Fields, 3 kHz to 300 GHz," ANSI/IEEE C95.3-2003, Copyright 2003 by the Institute of Electrical and Electronics Engineers, Inc., New York, New York 10017. These criteria for SAR evaluation are similar to those recommended by the National Council on Radiation Protection and Measurements (NCRP) in "Biological Effects and Exposure Criteria for Radio frequency Electromagnetic Fields," NCRP Report No. 86, Section 17.4.5. Copyright NCRP, 1986, Bethesda, Maryland 20814. SAR is a measure of the rate of energy absorption due to exposure to an RF transmitting source. SAR values have been related to threshold levels for potential biological hazards. The criteria to be used are specified in paragraphs (d)(1) and (d)(2) of this section and shall apply for portable devices transmitting in the

frequency range from 100 kHz to 6 GHz. Portable devices that transmit at frequencies above 6 GHz are to be evaluated in terms of the MPE limits specified in § 1.1310 of this chapter. Measurements and calculations to demonstrate compliance with MPE field strength or power density limits for devices operating above 6 GHz should be made at a minimum distance of 5 cm from the radiating source.

(1) Limits for Occupational/Controlled exposure: 0.4 W/kg as averaged over the whole-body and spatial peak SAR not exceeding 8 W/kg as averaged over any 1 gram of tissue (defined as a tissue volume in the shape of a cube). Exceptions are the hands, wrists, feet and ankles where the spatial peak SAR shall not exceed 20 W/kg, as averaged over an 10 grams of tissue (defined as a tissue volume in the shape of a cube). Occupational/Controlled limits apply when persons are exposed as a consequence of their employment provided these persons are fully aware of and exercise control over their exposure. Awareness of exposure can be accomplished by use of warning labels or by specific training or education through appropriate means, such as an RF safety program in a work environment.

(2) Limits for General Population/Uncontrolled exposure: 0.08 W/kg as averaged over the whole-body and spatial peak SAR not exceeding 1.6 W/kg as averaged over any 1 gram of tissue (defined as a tissue volume in the shape of a cube). Exceptions are the hands, wrists, feet and ankles where the spatial peak SAR shall not exceed 4 W/kg, as averaged over any 10 grams of tissue (defined as a tissue volume in the shape of a cube). General Population/Uncontrolled limits apply when the general public may be exposed, or when persons that are exposed as a consequence of their employment may not be fully aware of the potential for exposure or do not exercise control over their exposure. Warning labels placed on consumer devices such as cellular telephones will not be sufficient reason to allow these devices to be evaluated subject to limits for occupational/controlled exposure in paragraph (d)(1) of this section.

Human Exposure	Uncontrolled Environment General Population	Controlled Environment Occupational
Partial Peak SAR (Partial)	1.60 m W/g	8.00 m W/g
Partial Average SAR (Whole Body)	0.08 m W/g	0.40 m W/g
Partial Peak SAR (Hands/Feet/Ankle/Wrist)	4.00 m W/g	20.00 m W/g

8 The SAR Measurement System

A block diagram of the SAR measurement System is given in Fig. a. This SAR Measurement System uses a Computer-controlled 3-D stepper motor system (SPEAG DASY5 professional system). The model EX3DV4 field probe is used to determine the internal electric fields. The SAR can be obtained from the equation $SAR = \sigma (|E_i|^2) / \rho$ where σ and ρ are the conductivity and mass density of the tissue-simulant.

The DASY5 system for performing compliance tests consists of the following items:

- A standard high precision 6-axis robot (Staubli TX family) with controller, teach pendant and software. An arm extension is for accommodating the data acquisition electronics (DAE).
- A dosimeter probe, i.e., an isotropic E-field probe optimized and calibrated for usage in tissue simulating liquid. The probe is equipped with an optical surface detector system.
- Data acquisition electronics (DAE) which performs the signal amplification, signal multiplexing, AD-conversion, offset measurements, mechanical surface detection, collision detection, etc. The unit is battery powered with standard or rechargeable batteries. The signal is optically transmitted to the EOC.

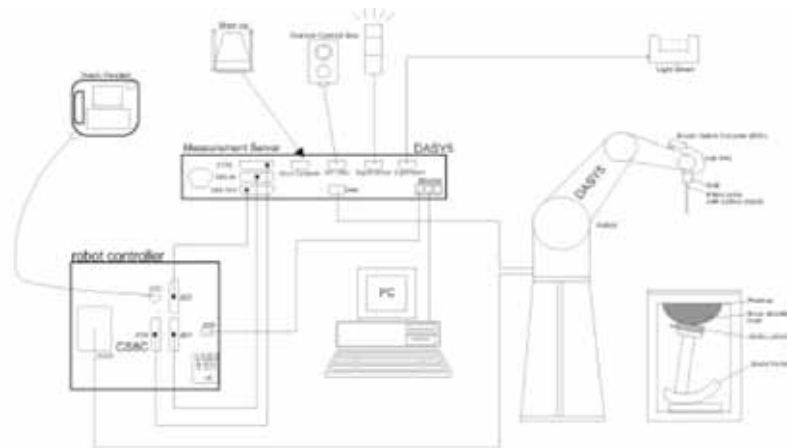


Fig 1. The microwave circuit arrangement used for SAR system verification

- The Electro-optical converter (EOC) performs the conversion between optical and electrical of the signals for the digital communication to the DAE and for the analog signal from the optical surface detection. The EOC is connected to the measurement server.
- The function of the measurement server is to perform the time critical tasks such as signal filtering, control of the robot operation and fast movement interrupts.
- A probe alignment unit which improves the (absolute) accuracy of the probe positioning.
- A computer operating Windows 7.
- DASY5 software.
- Remote control with teach pendant and additional circuitry for robot safety such as warning lamps, etc.
- The SAM twin phantom enabling testing left-hand and right-hand usage.
- The device holder for handheld mobile phones.
- Tissue simulating liquid mixed according to the given recipes.
- Validation dipole kits allowing to validate the proper functioning of the system.

9 System Components

9.1 Probe

Construction	: Symmetrical design with triangular core. Built-in shielding against static charges. PEEK enclosure material (resistant to organic solvents, e.g., DGBE)
Calibration	: Basic Broad Band Calibration in air Conversion Factors (CF) for HSL 835 and HSL1900. Additional CF-Calibration for other liquids and frequencies upon request.
Frequency	: 10 MHz to 6 GHz; Linearity: ± 0.2 dB (30 MHz to 6 GHz)
Directivity	: ± 0.3 dB in HSL (rotation around probe axis) ± 0.5 dB in tissue material (rotation normal to probe axis)
Dynamic Range	: $10\mu\text{W/g}$ to > 100 m W/g; Linearity: ± 0.2 dB(noise: typically $< 1\mu\text{W/g}$)
Dimensions	: Overall length: 337 mm (Tip length: 20 mm) Tip diameter: 2.5 mm (Body diameter: 12 mm) Distance from probe tip to dipole centers: 1 mm
Application	: High precision dosimetric measurements in any exposure scenario (e.g., very strong gradient fields). Only probe which enables compliance testing for frequencies up to 6 GHz with precision of better 30%
Construction	: Symmetrical design with triangular core. Built-in shielding against static charges. PEEK enclosure material (resistant to organic solvents, e.g., DGBE)



EX3DV4 E-Field Probe

NOTE:

1. The Probe parameters have been calibrated by the SPEAG. Please reference "APPENDIX C" for the Calibration Certification Report.

9.2 ELI Phantom

Construction	: The SAM Phantom is constructed of a fiberglass shell integrated in a wooden table. The shape of the shell is based on data from an anatomical study designed to determine the maximum exposure in at least 90 % of all users. It enables the dosimetric evaluation of left and right hand phone usage as well as body mounted usage at the flat phantom region. A cover prevents the evaporation of the liquid. Reference markings on the Phantom allow the complete setup of all predefined phantom positions and measurement grids by manually teaching three points in the robot
Shell Thickness	: $2.0\text{ mm} \pm 0.1\text{ mm}$
Filling Volume	: Approx. 25 liters



SAM Phantom

9.3 Device Holder

Construction: : In combination with the Twin SAM PhantomV4.0/V4.0C or Twin SAM, the Mounting Device (made from POM) enables the rotation of the mounted transmitter in spherical coordinates, whereby the rotation point is the ear opening. The devices can be easily and accurately positioned according to IEC, IEEE, CENELEC, FCC or other specifications. The device holder can be locked at different phantom locations (left head, right head, flat phantom).



Device Holder

Construction: : Simple but effective and easy-to-use extension for Mounting Device that facilitates the testing of larger devices according to IEC 62209-2 (a.q.. laptops, Cameras, etc.). It is lightweight and fits easily on the upper part of the Mounting Device in place of the phone positioned.



Device Holder

10 SAR Measurement Procedures

10.1 Normal SAR Measurement Procedure

Step 1: Power Reference Measurement

The Power Reference Measurement and Power Drift Measurements are for monitoring the power drift of the device under test in the batch process. The Minimum distance of probe sensors to surface determines the closest measurement point to phantom surface. The minimum distance of probe sensors to surface is 2 mm. This distance cannot be smaller than the Distance of sensor calibration points to probe tip as defined in the probe properties.

Step 2 and 3: Area Scan & Zoom Scan Procedures

The entire evaluation of the spatial peak values is performed within the Post-processing engine (SEMCAD). The system always gives the maximum values for the 1 g and 10 g cubes. The algorithm to find the cube with highest averaged SAR is divided into the following stages:

1. The extraction of the measured data (grid and values) from the Zoom Scan.
2. The calculation of the SAR value at every measurement point based on all stored data (A/D values and measurement parameters)
3. The generation of a high-resolution mesh within the measured volume
4. The interpolation of all measured values from the measurement grid to the high-resolution grid
5. The extrapolation of the entire 3-D field distribution to the phantom surface over the distance from sensor to surface
6. The calculation of the averaged SAR within masses of 1 g and 10 g.

Step 4: Power drift measurement

The Power Drift Measurement measures the field at the same location as the most recent power reference measurement within the same procedure, and with the same settings. The Power Drift Measurement gives the field difference in dB from the reading conducted within the last Power Reference Measurement. This allows a user to monitor the power drift of the device under test within a batch process. The measurement procedure is the same as Step 1.

< Area and Zoom Scan Resolutions per FCC KDB Publication 865664 D01v01r03 >

			≤ 3 GHz	> 3 GHz
Maximum distance from closest measurement point (geometric center of probe sensors) to phantom surface			5 ± 1 mm	$\frac{1}{2} \cdot \delta \cdot \ln(2) \pm 0.5$ mm
Maximum probe angle from probe axis to phantom surface normal at the measurement location			$30^{\circ} \pm 1^{\circ}$	$20^{\circ} \pm 1^{\circ}$
Maximum area scan spatial resolution: Δx_{Area} , Δy_{Area}			≤ 2 GHz: ≤ 15 mm 2 – 3 GHz: ≤ 12 mm	3 – 4 GHz: ≤ 12 mm 4 – 6 GHz: ≤ 10 mm
			When the x or y dimension of the test device, in the measurement plane orientation, is smaller than the above, the measurement resolution must be \leq the corresponding x or y dimension of the test device with at least one measurement point on the test device.	
Maximum zoom scan spatial resolution: Δx_{Zoom} , Δy_{Zoom}			≤ 2 GHz: ≤ 8 mm 2 – 3 GHz: ≤ 5 mm*	3 – 4 GHz: ≤ 5 mm* 4 – 6 GHz: ≤ 4 mm*
Maximum zoom scan spatial resolution, normal to phantom surface	uniform grid: $\Delta z_{Zoom}(n)$		≤ 5 mm	3 – 4 GHz: ≤ 4 mm 4 – 5 GHz: ≤ 3 mm 5 – 6 GHz: ≤ 2 mm
	graded grid	$\Delta z_{Zoom}(1)$: between 1 st two points closest to phantom surface	≤ 4 mm	3 – 4 GHz: ≤ 3 mm 4 – 5 GHz: ≤ 2.5 mm 5 – 6 GHz: ≤ 2 mm
		$\Delta z_{Zoom}(n>1)$: between subsequent points	$\leq 1.5 \cdot \Delta z_{Zoom}(n-1)$	
Minimum zoom scan volume	x, y, z		≥ 30 mm	3 – 4 GHz: ≥ 28 mm 4 – 5 GHz: ≥ 25 mm 5 – 6 GHz: ≥ 22 mm
Note: δ is the penetration depth of a plane-wave at normal incidence to the tissue medium; see draft standard IEEE P1528-2011 for details.				
* When zoom scan is required and the <u>reported</u> SAR from the area scan based <i>1-g SAR estimation</i> procedures of KDB 447498 is ≤ 1.4 W/kg, ≤ 8 mm, ≤ 7 mm and ≤ 5 mm zoom scan resolution may be applied, respectively, for 2 GHz to 3 GHz, 3 GHz to 4 GHz and 4 GHz to 6 GHz.				

11 SAR System Verification

The microwave circuit arrangement for system verification is sketched in Fig. 1.11. The daily system accuracy verification occurs within the flat section of the SAM phantom. A SAR measurement was performed to see if the measured SAR was within $\pm 10\%$ from the target SAR values. These tests were done at 2450 MHz. The tests were conducted on the same days as the measurement of the DUT. The obtained results from the system accuracy verification are displayed in the table 1.11 (SAR values are normalized to 1W forward power delivered to the dipole). During the tests, the ambient temperature of the laboratory was in the range $(22 \pm 2)^\circ\text{C}$, the relative humidity was in the range $(55 \pm 5)\%$ R.H and the liquid depth above the ear reference points was $\geq 15\text{ cm} \pm 5\text{ mm}$ (frequency $\leq 3\text{ GHz}$) or $\geq 10\text{ cm} \pm 5\text{ mm}$ (frequency $> 3\text{ GHz}$) in all the cases. It is seen that the system is operating within its specification, as the results are within acceptable tolerance of the reference values.

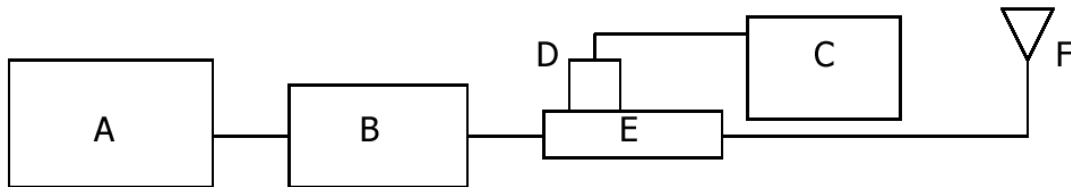


Fig 1.11. The microwave circuit arrangement used for SAR system verification

- A. Agilent Model E4421B Signal Generator
- B. EMPOWER Model 2001-BBS3Q7ECK Amplifier
- C. Agilent Model E4419B Power Meter
- D. Agilent Model 9300H Power Sensor
- E. Agilent Model 86205A Directional RF Bridges
- F. Reference dipole Antenna



Photo of the dipole Antenna

Verification Kit	Probe S/N	Tissue	Target SAR 1 g from Calibration Certificate (1 W)	Measured SAR 1 g (0.1 W)	Normalized SAR 1 g (1 W)	Deviation (%)	Date	Liquid Temp. (°C)
D2450V2 S/N: 892	3862	2450 MHz Body	52.4 W/kg	5.09 W/kg	50.9 W/kg	-2.86	2014-04-14	21.5
D2450V2 S/N: 892	3862	2450 MHz Body	50.1 W/kg	5.01 W/kg	50.1 W/kg	0.00	2014-04-14	21.7

Table1.11. Results system verification

12 Tissue Simulant Fluid for the Frequency Band

The dielectric properties for this simulant fluid were measured by using the Speag Model DAK-3.5 Dielectric Probe in conjunction with Agilent E5071C Network Analyzer(300 kHz - 6 GHz) by using a procedure detailed in Section V.

f (MHz)	Tissue type	Limits / Measured	Dielectric Parameters		
			Permittivity	Conductivity	Simulated Tissue Temp()
2450	Head	Measured, 2014-04-14	40.1	1.83	21.5
		<i>Recommended Limits</i>	39.2	1.80	21.0 ~ 23.0
		Deviation (%)	2.30	1.67	-
2412		Measured, 2014-04-14	40.3	1.78	21.5
		Deviation (%)	2.81	-1.11	-
2437		Measured, 2014-04-14	40.2	1.82	21.5
		Deviation (%)	2.55	1.11	-
2462		Measured, 2014-04-14	40.0	1.85	21.5
		Deviation (%)	2.04	2.78	-
2450		Body	Measured, 2014-04-14	53.0	1.94
	<i>Recommended Limits</i>		52.7	1.95	21.0 ~ 23.0
	Deviation (%)		0.57	-0.51	-
2412	Measured, 2014-04-14		53.2	1.89	21.7
	Deviation (%)		0.95	-3.08	-
2437	Measured, 2014-04-14		53.1	1.92	21.7
	Deviation (%)		0.76	-1.54	-
2462	Measured, 2014-04-14		53.0	1.96	21.7
	Deviation (%)		0.57	0.51	-

The composition of the brain & muscle tissue simulating liquid

The following tissue formulations are provided for reference only as some of the parameters have not been thoroughly verified. The composition of ingredients may be modified accordingly to achieve the desired target tissue parameters required for routine SAR evaluation.

Ingredients (% by weight)	Frequency (MHz)									
	450		835		915		1900		2450	
Tissue Type	Head	Body	Head	Body	Head	Body	Head	Body	Head	Body
Water	38.56	51.16	41.45	52.4	41.05	56.0	54.9	40.4	62.7	73.2
Salt (NaCl)	3.95	1.49	1.45	1.4	1.35	0.76	0.18	0.5	0.5	0.04
Sugar	56.32	46.78	56.0	45.0	56.5	41.76	0.0	58.0	0.0	0.0
HEC	0.98	0.52	1.0	1.0	1.0	1.21	0.0	1.0	0.0	0.0
Bactericide	0.19	0.05	0.1	0.1	0.1	0.27	0.0	0.1	0.0	0.0
Triton X-100	0.0	0.0	0.0	0.0	0.0	0.0	0.0	0.0	36.8	0.0
DGBE	0.0	0.0	0.0	0.0	0.0	0.0	44.92	0.0	0.0	26.7
Dielectric Constant	43.42	58.0	42.54	56.1	42.0	56.8	39.9	54.0	39.8	52.5
Conductivity (S/m)	0.85	0.83	0.91	0.95	1.0	1.07	1.42	1.45	1.88	1.78

Salt: 99 % Pure Sodium Chloride

Sugar: 98 % Pure Sucrose

Water: De-ionized, 16 MΩ⁺ resistivity

HEC: Hydroxyethyl Cellulose

DGBE: 99 % Di(ethylene glycol) butyl ether, [2-(2-butoxyethoxy)ethanol]

Triton X-100 (ultra pure): Polyethylene glycol mono [4-(1,1, 3, 3-tetramethylbutyl)phenyl]ether

13 Test System Validation

Per FCC KDB 865664 D01v01r03, SAR system validation status should be documented to confirm measurement accuracy. The SAR systems (including SAR probes, system components and software versions) used for this device were validated against its performance specifications prior to the SAR measurements. Reference dipoles were used with the require tissue-equivalent media for system validation, according to the procedures outlined in IEEE 1528-2003 and FCC KDB 865664 D01v01r03. Since frequency within the valid frequency range of the probe calibration point, using the system that normally operates with the probe for routine SAR measurements and according to the required tissue-equivalent media.

A tabulated summary of the system validation status including the validation date(s), measurement frequencies, SAR probe and tissue dielectric parameters has been included.

f (MHz)	Date	Probe S/N	Probe Cal point	Tissue Type	Dielectric Parameters		CW Validation			Modulated Validation		
					Permit tivity	Condu ctivity	Sensitivity	Probe Linearity	Probe Isotropy	Mod. Type	Duty Factor	PAR
2450	02/14/2014	3862	2450	Head	39.59	1.83	PASS	PASS	PASS	OFDM	N/A	PASS
2450	02/14/2014	3862	2450	Body	53.27	1.96	PASS	PASS	PASS	OFDM	N/A	PASS

< SAR System Validation Summary>

14 Instruments List

Manufacturer	Device	Type	Serial Number	Cal Date	Cal Interval	Cal Due
Stäubli	Robot	TX90XL	F12/5LP8A1/A/01	N/A	N/A	N/A
Schmid& Partner Engineering AG	Dosimetric E-Field Probe	EX3DV4	3862	01/29/2014	Annual	01/29/2015
Schmid& Partner Engineering AG	2450 MHz System Validation Dipole	D2450V2	892	09/26/2013	Biennial	09/26/2015
Schmid& Partner Engineering AG	Data acquisition Electronics	DAE4	1340	05/28/2013	Annual	05/28/2014
Schmid& Partner Engineering AG	Software	DASY5 V52	-	N/A	N/A	N/A
Schmid& Partner Engineering AG	Phantom	ELI Phantom	TP-1721	N/A	N/A	N/A
Agilent	Network Analyzer	E5071C	MY46111535	06/27/2013	Annual	06/27/2014
Schmid& Partner Engineering AG	Dielectric Assessment Kit	DAK-3.5	1107	01/19/2014	Annual	01/19/2015
Agilent	Power Meter	E4419B	GB43311715	06/26/2013	Annual	06/26/2014
Agilent	Power Sensor	E9300H	MY41495314	09/10/2013	Annual	09/10/2014
			MY41495307	09/10/2013	Annual	09/10/2014
Agilent	Signal Generator	E4421B	MY43350132	06/27/2013	Annual	06/27/2014
Empower RF Systems	Power Amplifier	2001-BBS3Q7ECK	1032 D/C 0336	01/02/2014	Annual	01/02/2015
Agilent	Directional RF Bridges	86205A	MY31402302	06/29/2013	Annual	06/29/2014
Microlab	LP Filter	LA-30N	N/A	09/09/2013	Annual	09/09/2014
Agilent	Attenuator	8491B	50566	09/09/2013	Annual	09/09/2014
JUMBP	Hygro-Thermometer	BJ5478	12091382-1	07/02/2013	Annual	07/02/2014
LKM Electronic	Digital Thermometer	DTM3000	3027	07/01/2013	Annual	07/01/2014
Agilent	Spectrum Analyzer	E4445A	MY44020523	07/26/2013	Annual	07/26/2014

15 Operation Configuration

The client provided a special driver and test program which can control the frequency and power of the WLAN module. The EUT was set to maximum power level during all tests and at the beginning of each test the battery was fully charged.

16 Measured and Reported SAR

Per FCC KDB Publication 447498 D01v05r02, When SAR is not measured at the maximum power level allowed for production units, the results must be scaled to the maximum tune-up tolerance limit according to the power applied to the individual channels tested to determine compliance. For simultaneous transmission, the measured aggregate SAR must be scaled according to the sum of the differences between the maximum tune-up tolerance and actual power used to test each transmitter. When SAR is measured at or scaled to the maximum tune-up tolerance limit, the results are referred to as reported SAR. Test highest reported SAR results are identified on the grant of equipment authorization according to procedures in KDB 690783 D01v01r03.

17 Maximum Output Power Specifications

This device operates using the following maximum output power specifications. SAR values were scaled to the maximum allowed power to determine compliance per KDB Publication 447498 D01v05r02.

Average power for Production				
Mode	Nominal & Maximum	b	g	n
802.11b/g/n	Maximum	13.0	10.5	10.5
	Nominal	11.5	9.0	9.0
Mode	Nominal & Maximum	5 GHz		
802.11a/n	Maximum	7.5		
	Nominal	6.0		
Tune-up Tolerance: -1.5 dB / + 1.5 dB				

18 RF Conducted Power

WLAN 2.4 GHz

802.11b Mode		Rated (Mbps)	Measured Average Power (dBm)
Frequency (MHz)	Channel No.		
2412	1	1	11.75
		2	11.68
		5.5	11.63
		11	11.61
2437	6	1	12.22
		2	12.18
		5.5	12.06
		11	11.99
2462	11	1	10.64
		2	10.52
		5.5	10.44
		11	10.35

802.11g Mode		Rated (Mbps)	Measured Average Power (dBm)
Frequency (MHz)	Channel No.		
2412	1	6	10.01
		9	9.99
		12	9.96
		18	9.90
		24	9.82
		36	9.74
		48	9.63
		54	9.59
2437	6	6	10.08
		9	10.03
		12	9.95
		18	9.86
		24	9.75
		36	9.73
		48	9.63
		54	9.62
2462	11	6	9.55
		9	9.50
		12	9.48
		18	9.45
		24	9.37
		36	9.26
		48	9.24
		54	9.23

802.11n_HT20 Mode		Rated (Mbps)	Measured Average Power (dBm)
Frequency (MHz)	Channel No.		
2412	1	MCS0	9.45
		MCS1	9.37
		MCS2	9.36
		MCS3	9.34
		MCS4	9.22
		MCS5	9.14
		MCS6	9.08
		MCS7	9.05
2437	6	MCS0	9.36
		MCS1	9.34
		MCS2	9.23
		MCS3	9.16
		MCS4	9.09
		MCS5	9.08
		MCS6	9.06
		MCS7	9.01
2462	11	MCS0	9.10
		MCS1	9.04
		MCS2	8.97
		MCS3	8.90
		MCS4	8.80
		MCS5	8.75
		MCS6	8.67
		MCS7	8.61

802.11a Mode		Rated (Mbps)	Measured Average Power (dBm)
Frequency (MHz)	Channel No.		
5745	149	6	7.04
		9	6.97
		12	6.92
		18	6.81
		24	6.72
		36	6.62
		48	6.60
		54	6.57
5765	153	6	6.98
		9	6.87
		12	6.85
		18	6.76
		24	6.69
		36	6.64
		48	6.58
		54	6.55
5785	157	6	7.10
		9	7.06
		12	7.02
		18	6.90
		24	6.86
		36	6.84
		48	6.77
		54	6.65
5805	161	6	7.19
		9	7.15
		12	7.13
		18	7.11
		24	7.09
		36	6.99
		48	6.89
		54	6.80
5825	165	6	7.23
		9	7.22
		12	7.10
		18	7.02
		24	7.00
		36	6.94
		48	6.89
		54	6.84

802.11n_HT20 Mode		Rated (Mbps)	Measured Average Power (dBm)
Frequency (MHz)	Channel No.		
5745	149	6	6.81
		9	6.59
		12	6.55
		18	6.54
		24	6.51
		36	6.40
		48	6.28
		54	6.21
5765	153	6	6.63
		9	6.61
		12	6.60
		18	6.58
		24	6.50
		36	6.43
		48	6.42
		54	6.36
5785	157	6	6.86
		9	6.83
		12	6.76
		18	6.64
		24	6.56
		36	6.52
		48	6.40
		54	6.30
5805	161	6	7.03
		9	7.00
		12	6.91
		18	6.86
		24	6.84
		36	6.74
		48	6.69
		54	6.60
5825	165	6	6.86
		9	6.85
		12	6.80
		18	6.75
		24	6.66
		36	6.59
		48	6.52
		54	6.43

802.11n_HT40 Mode		Rated (Mbps)	Measured Average Power (dBm)
Frequency (MHz)	Channel No.		
5755	151	6	5.45
		9	5.37
		12	5.30
		18	5.28
		24	5.19
		36	5.16
		48	5.08
		54	4.99
5795	159	6	6.43
		9	6.33
		12	6.32
		18	6.21
		24	6.14
		36	6.05
		48	5.98
		54	5.94

19 SAR Test Configuration

IEEE 802.11 Transmitters

802.11 a/b/g and 4.9 GHz operating modes are tested independently according to the service requirements in each frequency band. 802.11 b/g modes are tested on channel 1, 6, and 11. 802.11a is tested for UNII operations on channels 36 and 48 in the 5.15 ~ 5.25 GHz band, channels 52 and 64 in the 5.25 ~ 5.35 GHz band, channels 104, 116, 124 and 136 in the 5.470 ~ 5.725 GHz band, and channels 149 and 161 in the 5.8 GHz band. When 5.8 GHz §15.247 is also available, channels 149, 157 and 165 should be tested instead of the UNII channels. 802.11g mode was evaluated only if the output power was 0.25 dB higher than the 802.11b mode.

Mode	GHz	Channel	Turbo Channel	"Default Test Channels"		
				§15.247 802.11b	802.11g	UNII
802.11 b/g	2.412	1*		✓	▽	
	2.437	6	6	✓	▽	
	2.462	11*		✓	▽	
802.11a	5.18	36				✓
	5.20	40	42 (5.21 GHz)			•
	5.22	44				•
	5.24	48	50 (5.25 GHz)			✓
	5.26	52				✓
	5.28	56	58 (5.29 GHz)			•
	5.30	60				•
	5.32	64				✓
	5.500	100				•
	5.520	104	Unknown			✓
	5.540	108				•
	5.560	112				•
	5.580	116				✓
	5.600	120				•
	5.620	124				✓
	5.640	128				•
	5.660	132				•
	5.680	136				✓
	5.700	140				•
	5.745	149		✓		✓
	5.765	153	152 (5.76 GHz)		•	•
	5.785	157		✓		•
	5.805	161	160 (5.80 GHz)		•	✓
	§15.247	5.825	165	✓		

- ✓ = "default test channels"
- • = possible 802.11a channels with maximum average output > the "default test channels"
- ▽ = possible 802.11g channels with maximum average output ¼ dB ≥ the "default test channels"
- * = when output power is reduced for channel 1 and/or 11 to meet restricted band requirements the highest output channels closest to each of these channels should be tested

20 SAR Test Exclusions Applied

Per FCC KDB 447498 D01v05r02, the SAR exclusion threshold for distances < 50 mm is defined by the following equation:

$$\frac{\text{Max Power of Channel (mW)}}{\text{Test Separation Distance (mm)}} * \sqrt{\text{Frequency(GHz)}} \leq 3.0$$

SAR test exclusion threshold

Frequency: 5.825 GHz (min. Separation Distances = 5 mm)

Maximum Tune-up Tolerances = 5.62 mW

5.8 GHz WLAN Mode Conclusion: SAR is not required $(5.62 \text{ (mW)} / 5(\text{mm}) \times \sqrt{5.825(\text{GHz})} = 2.71 \leq 3.0)$



<The Distance information of Antenna to Edges of EUT>

21 SAR Data Summary

WLAN 2.45 GHz Head SAR

Ambient Temperature (°C)	23.4
Liquid Temperature (°C)	21.5
Date	2014-04-14

Test Mode	EUT Position	Traffic Channel		Power(dBm)		1-g SAR (W/kg)		Plot No
		Frequency (MHz)	Channel	Measured Power	Tune-Up Limit	Measured SAR	Scaled SAR	
Right Ear	Cheek	2437	6	12.22	13.0	0.165	0.197	-
	Tilt	2437	6	12.22	13.0	0.147	0.176	-
Left Ear	Cheek	2437	6	12.22	13.0	0.217	0.260	A2
	Tilt	2437	6	12.22	13.0	0.164	0.196	-

WLAN 2.45 GHz Body SAR

Ambient Temperature (°C)	23.7
Liquid Temperature (°C)	21.7
Date	2014-04-14

Test Mode	EUT Position	Traffic Channel		Distance (mm)	Power(dBm)		1-g SAR (W/kg)		Plot No
		Frequency (MHz)	Channel		Measured Power	Tune-Up Limit	Measured SAR	Scaled SAR	
802.11b	Front	2437	6	15	12.22	13.0	0.036	0.043	-
	Rear	2437	6	15	12.22	13.0	0.084	0.101	A3

General Notes

1. The test data reported are the worst-case SAR values according to test procedures specified in IEEE 1528-2003, FCC KDB Publication 865664 D01v01r03 and FCC KDB Publication 447498 D01v05r02.
2. All modes of operation were investigated, and worst-case results are reported.
3. Battery is fully charged for all readings and the standard batteries are the only options.
4. The EUT is tested 2nd hot-spot peak, if it is less than 2 dB below the highest peak.
5. The manufacturer has confirmed that the device(s) tested have the same physical, mechanical and thermal characteristics and are within operational tolerances expected for production units.
6. SAR results were scaled to the maximum allowed power to demonstrate compliance per FCC KDB Publication 447498 D01v05r02.

WLAN Notes

1. For 2.4 GHz, justification for reduced test configuration for WIFI channels per KDB Publication 248227 and April 2010 FCC/TCB Meeting Notes: Highest average RF output power channel for the lowest data rate were selected for SAR evaluation. Other IEEE 802.11 modes (including 802.11g/n) were not investigated since the average output powers were not greater than 0.25 dB than that of the corresponding channel in the lowest data rate IEEE 802.11b modes
2. Since the maximum extrapolated peak SAR of the zoom scan for the maximum output channel is < 1.6 W/kg and the reported 1g averaged SAR is < 0.8 W/kg, SAR testing on other default channels was not required.

22 SAR Measurement Variability

22.1 Measurement Variability

Per FCC KDB Publication 865664 D01v01r03, SAR measurement variability was assessed for each frequency band, which was determined by the SAR probe calibration point and tissue-equivalent medium used for the device measurements. When both head and body tissue-equivalent media were required for SAR measurements in a frequency band, the variability measurement procedures were applied to the tissue medium with the highest measured SAR, using the highest measured SAR configuration for that tissue-equivalent medium. These additional measurements were repeated after the completion of all measurements requiring the same head or body tissue-equivalent medium in a frequency band. The test device was returned to ambient conditions (normal room temperature) with the battery fully charged before it was re-mounted on the device holder for the repeated measurement(s) to minimize any unexpected variations in the repeated results.

SAR Measurement Variability was assessed using the following procedures for each frequency band:

1. When the original highest measured SAR is ≥ 0.80 W/kg, the measurement was repeated once.
2. A second repeated measurement was performed only if the ratio of largest to smallest SAR for the original and first repeated measurements was > 1.20 or when the original or repeated measurement was ≥ 1.45 W/kg ($\sim 10\%$ from the 1-g SAR limit).
3. A third repeated measurement was performed only if the original, first or second repeated measurement was ≥ 1.5 W/kg and the ratio of largest to smallest SAR for the original, first and second repeated measurements is > 1.20 .
4. Repeated measurements are not required when the original highest measured SAR is < 0.80 W/kg

Note: All measured SAR values were < 0.8 W/kg. Therefore, no SAR measurement variability analysis was required.

22.2 Measurement Uncertainty

The measured SAR was < 1.5 W/kg for all frequency bands. Therefore, per KDB Publication 865664 D01v01r03, the extended measurement uncertainty analysis per IEEE 1528-2003 was not required.

Appendixes List

Appendix A	A.1 Verification Test Plots for 2.4 GHz A.2 Head SAR Test Plots for Wi-Fi 2.4 GHz Band A.3 Body SAR Test Plots for Wi-Fi 2.4 GHz Band
Appendix B	B.1 Uncertainty Analysis
Appendix C	C.1 Calibration certificate for Probe C.2 Calibration certificate for DAE C.3 Calibration certificate for Dipole

Appendix A.1

Verification Test Plots for 2.4 GHz

Date: 2014-04-14

Test Laboratory : SGS Korea (Gunpo Laboratory)
File Name: [2450MHz Velification da53-0](#)

Input Power : 100 mW

Ambient Temp : 23.4 °C Tissue Temp : 21.5 °C

DUT: Dipole 2450 MHz; Type: D2450V2; Serial: D2450V2 - SN:892

Communication System: UID 0, CW (0); Frequency: 2450 MHz; Duty Cycle: 1:1
Medium parameters used: $f = 2450$ MHz; $\sigma = 1.834$ S/m; $\epsilon_r = 40.097$; $\rho = 1000$ kg/m³
Phantom section: Flat Section

DASY52 Configuration:

- Probe: EX3DV4 - SN3862; ConvF(7.24, 7.24, 7.24); Calibrated: 2014-01-29;
- Sensor-Surface: 2mm (Mechanical Surface Detection)
- Electronics: DAE4 Sn1340; Calibrated: 2013-05-28
- Phantom: SAM with CRP; Type: SAM; Serial: TP-1720
- DASY52 52.8.7(1137)SEMCAD X 14.6.10(7164)

Velification/2450 MHz Velification/Area Scan (81x81x1): Interpolated grid: dx=1.200 mm, dy=1.200 mm
Maximum value of SAR (interpolated) = 8.05 W/kg

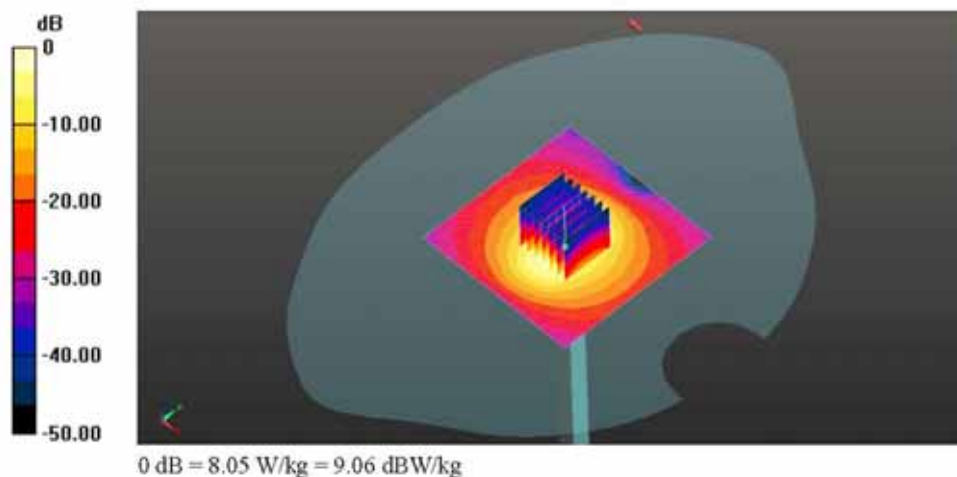
Velification/2450 MHz Velification/Zoom Scan (7x7x7)/Cube 0: Measurement grid: dx=5mm, dy=5mm, dz=5mm

Reference Value = 66.828 V/m; Power Drift = -0.02 dB

Peak SAR (extrapolated) = 11.1 W/kg

SAR(1 g) = 5.09 W/kg; SAR(10 g) = 2.29 W/kg

Maximum value of SAR (measured) = 8.02 W/kg



Appendix A.2

Head SAR Test Plots for Wi-Fi 2.4 GHz Band

Date: 2014-04-14

Test Laboratory : SGS Korea (Gunpo Laboratory)

File Name: [WLAN_802.11b_1Mbps_Right Touch_CH6.da53.0](#)

Ambient Temp : 23.4 °C Tissue Temp : 21.5 °C

DUT: ICW-1000G; Type: Wireless Phone; Serial: N/A

Communication System: UID 0, WLAN 2.45GHz (0); Frequency: 2437 MHz; Duty Cycle: 1:1

Medium parameters used: $f = 2437$ MHz; $\sigma = 1.815$ S/m; $\epsilon_r = 40.155$; $\rho = 1000$ kg/m³

Phantom section: Right Section

DASY52 Configuration:

- Probe: EX3DV4 - SN3862; ConvF(7.24, 7.24, 7.24); Calibrated: 2014-01-29;
- Sensor-Surface: 2mm (Mechanical Surface Detection)
- Electronics: DAE4 Sn1340; Calibrated: 2013-05-28
- Phantom: SAM with CRP; Type: SAM; Serial: TP-1720
- DASY52 52.8.7(1137)SEMCAD X 14.6.10(7164)

Head/WLAN_802.11b_1Mbps_Right Touch_CH6/Area Scan (81x141x1): Interpolated grid: dx=1.200 mm, dy=1.200 mm

Maximum value of SAR (interpolated) = 0.244 W/kg

Head/WLAN_802.11b_1Mbps_Right Touch_CH6/Zoom Scan (7x7x7)/Cube 0: Measurement grid:

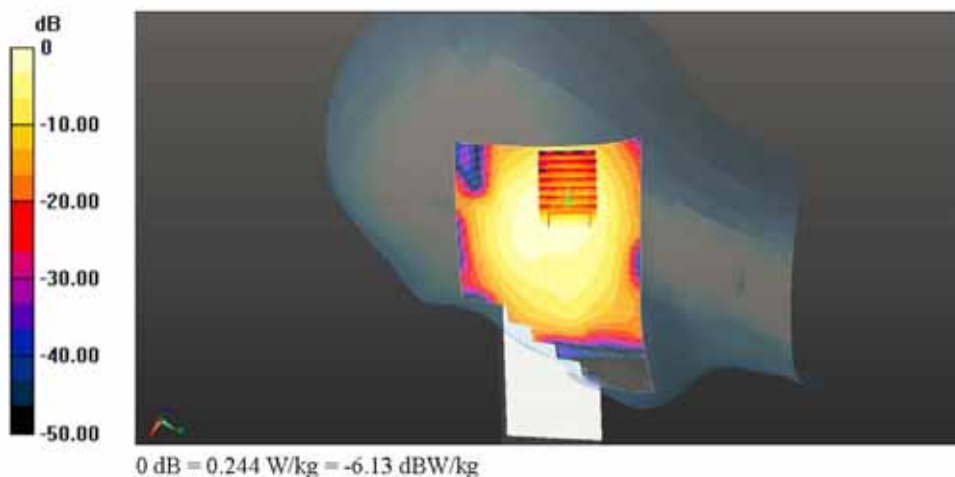
dx=5mm, dy=5mm, dz=5mm

Reference Value = 9.787 V/m; Power Drift = -0.01 dB

Peak SAR (extrapolated) = 0.330 W/kg

SAR(1 g) = 0.165 W/kg; SAR(10 g) = 0.084 W/kg

Maximum value of SAR (measured) = 0.238 W/kg



Appendix A.3

Body SAR Test Plots for Wi-Fi 2.4 GHz Band

Date: 2014-04-14

Test Laboratory : SGS Korea (Gunpo Laboratory)
 File Name: [WLAN_802.11b_1Mbps_Rear_CH6.da53.0](#)

Ambient Temp : 23.7 °C Tissue Temp : 21.7 °C

DUT: ICW-1000G; Type: Wireless Phone; Serial: N/A

Communication System: UID 0, WLAN 2.45GHz (0); Frequency: 2437 MHz; Duty Cycle: 1:1
 Medium parameters used: $f = 2437$ MHz; $\sigma = 1.924$ S/m; $\epsilon_r = 53.084$; $\rho = 1000$ kg/m³
 Phantom section: Flat Section

DASY52 Configuration:

- Probe: EX3DV4 - SN3862; ConvF(7.17, 7.17, 7.17); Calibrated: 2014-01-29;
- Sensor-Surface: 2mm (Mechanical Surface Detection)
- Electronics: DAE4 Sn1340; Calibrated: 2013-05-28
- Phantom: SAM with CRP v5.0; Type: QD000P40CD; Serial: TP:1721
- DASY52 52.8.7(1137)SEMCAD X 14.6.10(7164)

Body/WLAN_802.11b_1Mbps_Rear_CH6/Area Scan (81x141x1): Interpolated grid: dx=1.200 mm, dy=1.200 mm

Maximum value of SAR (interpolated) = 0.124 W/kg

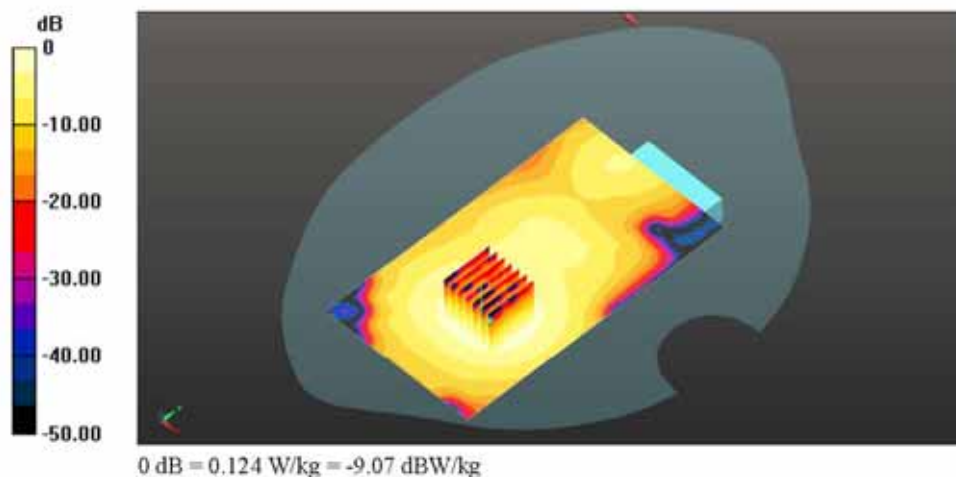
Body/WLAN_802.11b_1Mbps_Rear_CH6/Zoom Scan (7x7x7)/Cube 0: Measurement grid: dx=5mm, dy=5mm, dz=5mm

Reference Value = 4.123 V/m; Power Drift = 0.06 dB

Peak SAR (extrapolated) = 0.158 W/kg

SAR(1 g) = 0.084 W/kg; SAR(10 g) = 0.046 W/kg

Maximum value of SAR (measured) = 0.119 W/kg



Appendix B.1

Uncertainty Analysis

Measurement uncertainty for 300 MHz to 3 GHz averaged over 1 gram

a	b	c	d	e = f(d,k)	g	i = cxg/e	k
Uncertainty Component	Section in	Tol	Prob .	Div.	Ci	lg	Vi
	P1528	(%)	Dist.		(1g)	ui (%)	(Veff)
Probe calibration	E.2.1	6.55	N	1	1	6.55	∞
Axial isotropy	E.2.2	4.7	R	1.73	0.71	1.92	∞
hemispherical isotropy	E.2.2	9.6	R	1.73	0.71	3.92	∞
Boundary effect	E.2.3	1.0	R	1.73	1	0.58	∞
Linearity	E.2.4	4.7	R	1.73	1	2.71	∞
System detection limit	E.2.5	0.3	R	1.73	1	0.14	∞
Readout electronics	E.2.6	0.3	N	1	1	0.30	∞
Response time	E.2.7	0.5	R	1.73	1	0.29	∞
Integration time	E.2.8	2.6	R	1.73	1	1.50	∞
RF ambient Condition -Noise	E.6.1	3	R	1.73	1	1.73	∞
RF ambient Condition - reflections	E.6.1	3	R	1.73	1	1.73	∞
Probe positioning- mechanical tolerance	E.6.2	1.5	R	1.73	1	0.87	∞
Probe positioning- with respect to phantom	E.6.3	2.9	R	1.73	1	1.67	∞
Max. SAR evaluation	E.5.2	1.0	R	1.73	1	0.58	∞
Test sample positioning	E.4.2	1.32	N	1	1	1.32	9
Device holder uncertainty	E.4.1	3.6	N	1	1	3.60	4
Output power variation -SAR drift measurement	6.6.3	5	R	1.73	1	2.89	∞
Phantom uncertainty (shape and thickness tolerances)	E.3.1	4	R	1.73	1	2.31	∞
Liquid conductivity – deviation from target values	E.3.2	5	R	1.73	0.64	1.85	∞
Liquid conductivity – measurement uncertainty	E.3.2	0.38	N	1	0.64	0.24	9
Liquid permittivity – deviation from target values	E.3.3	5	R	1.73	0.6	1.73	∞
Liquid permittivity – deviation from target values	E.3.3	0.27	N	1	0.6	0.16	9
Combined standard uncertainty				RSS		10.94	323
Expanded uncertainty (95% CONFIDENCE INTERVAL)				k=2		21.62	

Appendix C.1

Calibration certificate for Probe

**Calibration Laboratory of
Schmid & Partner
Engineering AG**
Zeughausstrasse 43, 8004 Zurich, Switzerland



S Schweizerischer Kalibrierdienst
C Service suisse d'étalonnage
S Servizio svizzero di taratura
S Swiss Calibration Service

Accredited by the Swiss Accreditation Service (SAS)
The Swiss Accreditation Service is one of the signatories to the EA
Multilateral Agreement for the recognition of calibration certificates

Accreditation No.: **SCS 108**

Client **SGS (Dymstec)**

Certificate No: **EX3-3862_Jan14**

CALIBRATION CERTIFICATE

Object **EX3DV4 - SN:3862**

Calibration procedure(s) **QA CAL-01.v9, QA CAL-14.v4, QA CAL-23.v5, QA CAL-25.v6
Calibration procedure for dosimetric E-field probes**

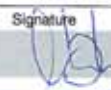

Calibration date: **January 29, 2014**

This calibration certificate documents the traceability to national standards, which realize the physical units of measurements (SI).
The measurements and the uncertainties with confidence probability are given on the following pages and are part of the certificate.

All calibrations have been conducted in the closed laboratory facility: environment temperature (22 ± 3)*°C and humidity < 70%.

Calibration Equipment used (M&E critical for calibration)

Primary Standards	ID	Cal Date (Certificate No.)	Scheduled Calibration
Power meter E4419B	GB41293874	04-Apr-13 (No. 217-01733)	Apr-14
Power sensor E4412A	MY41498087	04-Apr-13 (No. 217-01733)	Apr-14
Reference 3 dB Attenuator	SN: S5054 (3c)	04-Apr-13 (No. 217-01737)	Apr-14
Reference 20 dB Attenuator	SN: S5277 (20x)	04-Apr-13 (No. 217-01735)	Apr-14
Reference 30 dB Attenuator	SN: S5129 (30b)	04-Apr-13 (No. 217-01738)	Apr-14
Reference Probe ES3DV2	SN: 3013	30-Dec-13 (No. ES3-3013_Dec13)	Dec-14
DAE4	SN: 660	13-Dec-13 (No. DAE4-660_Dec13)	Dec-14
Secondary Standards	ID	Check Date (in house)	Scheduled Check
RF generator HP 8648C	US3642U01700	4-Aug-99 (in house check Apr-13)	In house check: Apr-16
Network Analyzer HP 8753E	US37390585	18-Oct-01 (in house check Oct-13)	In house check: Oct-14

	Name	Function	Signature
Calibrated by:	Claudio Leubler	Laboratory Technician	
Approved by:	Katja Pokovic	Technical Manager	
Issued: January 30, 2014			

This calibration certificate shall not be reproduced except in full without written approval of the laboratory.

Calibration Laboratory of
Schmid & Partner
Engineering AG
Zeughausstrasse 43, 8004 Zurich, Switzerland



S Schweizerischer Kalibrierdienst
C Service suisse d'étalonnage
S Servizio svizzero di taratura
S Swiss Calibration Service

Accredited by the Swiss Accreditation Service (SAS)
The Swiss Accreditation Service is one of the signatories to the EA
Multilateral Agreement for the recognition of calibration certificates

Accreditation No.: **SCS 108**

Glossary:

TSL	tissue simulating liquid
NORM _{x,y,z}	sensitivity in free space
ConvF	sensitivity in TSL / NORM _{x,y,z}
DCP	diode compression point
CF	crest factor (1/duty_cycle) of the RF signal
A, B, C, D	modulation dependent linearization parameters
Polarization ϕ	ϕ rotation around probe axis
Polarization θ	θ rotation around an axis that is in the plane normal to probe axis (at measurement center), i.e., $\theta = 0$ is normal to probe axis
Connector Angle	information used in DASY system to align probe sensor X to the robot coordinate system

Calibration is Performed According to the Following Standards:

- IEEE Std 1528-2013, "IEEE Recommended Practice for Determining the Peak Spatial-Averaged Specific Absorption Rate (SAR) in the Human Head from Wireless Communications Devices: Measurement Techniques", June 2013
- IEC 62209-1, "Procedure to measure the Specific Absorption Rate (SAR) for hand-held devices used in close proximity to the ear (frequency range of 300 MHz to 3 GHz)", February 2005

Methods Applied and Interpretation of Parameters:

- NORM_{x,y,z}**: Assessed for E-field polarization $\theta = 0$ ($f \leq 900$ MHz in TEM-cell; $f > 1800$ MHz: R22 waveguide). NORM_{x,y,z} are only intermediate values, i.e., the uncertainties of NORM_{x,y,z} does not affect the E²-field uncertainty inside TSL (see below *ConvF*).
- NORM(*f*)_{x,y,z} = NORM_{x,y,z} * frequency_response** (see Frequency Response Chart). This linearization is implemented in DASY4 software versions later than 4.2. The uncertainty of the frequency response is included in the stated uncertainty of *ConvF*.
- DCP_{x,y,z}**: DCP are numerical linearization parameters assessed based on the data of power sweep with CW signal (no uncertainty required). DCP does not depend on frequency nor media.
- PAR**: PAR is the Peak to Average Ratio that is not calibrated but determined based on the signal characteristics
- A_{x,y,z}; B_{x,y,z}; C_{x,y,z}; D_{x,y,z}; VR_{x,y,z}**: A, B, C, D are numerical linearization parameters assessed based on the data of power sweep for specific modulation signal. The parameters do not depend on frequency nor media. VR is the maximum calibration range expressed in RMS voltage across the diode.
- ConvF and Boundary Effect Parameters**: Assessed in flat phantom using E-field (or Temperature Transfer Standard for $f \leq 800$ MHz) and inside waveguide using analytical field distributions based on power measurements for $f > 800$ MHz. The same setups are used for assessment of the parameters applied for boundary compensation (alpha, depth) of which typical uncertainty values are given. These parameters are used in DASY4 software to improve probe accuracy close to the boundary. The sensitivity in TSL corresponds to NORM_{x,y,z} * ConvF whereby the uncertainty corresponds to that given for ConvF. A frequency dependent ConvF is used in DASY version 4.4 and higher which allows extending the validity from ± 50 MHz to ± 100 MHz.
- Spherical isotropy (3D deviation from isotropy)**: in a field of low gradients realized using a flat phantom exposed by a patch antenna.
- Sensor Offset**: The sensor offset corresponds to the offset of virtual measurement center from the probe tip (on probe axis). No tolerance required.
- Connector Angle**: The angle is assessed using the information gained by determining the NORM_x (no uncertainty required).

EX3DV4 – SN:3862

January 29, 2014

Probe EX3DV4

SN:3862

Manufactured: February 2, 2012

Calibrated: January 29, 2014

Calibrated for DASY/EASY Systems

(Note: non-compatible with DASY2 system!)

EX3DV4- SN:3862

January 29, 2014

DASY/EASY - Parameters of Probe: EX3DV4 - SN:3862

Basic Calibration Parameters

	Sensor X	Sensor Y	Sensor Z	Unc (k=2)
Norm ($\mu\text{V}/(\text{V}/\text{m})^2$) ^A	0.43	0.44	0.37	± 10.1 %
DCP (mV) ^B	108.2	99.9	104.9	

Modulation Calibration Parameters

UID	Communication System Name		A dB	B dB $\sqrt{\mu\text{V}}$	C	D dB	VR mV	Unc ^C (k=2)
0	CW	X	0.0	0.0	1.0	0.00	152.2	±3.3 %
		Y	0.0	0.0	1.0		154.0	
		Z	0.0	0.0	1.0		191.1	

The reported uncertainty of measurement is stated as the standard uncertainty of measurement multiplied by the coverage factor k=2, which for a normal distribution corresponds to a coverage probability of approximately 95%.

^A The uncertainties of NormX,Y,Z do not affect the E²-field uncertainty inside TSL (see Pages 5 and 6).

^B Numerical linearization parameter: uncertainty not required.

^C Uncertainty is determined using the max. deviation from linear response applying rectangular distribution and is expressed for the square of the field value.

EX3DV4- SN:3862

January 29, 2014

DASY/EASY - Parameters of Probe: EX3DV4 - SN:3862

Calibration Parameter Determined in Head Tissue Simulating Media

f (MHz) ^C	Relative Permittivity ^F	Conductivity (S/m) ^F	ConvF X	ConvF Y	ConvF Z	Alpha ^G	Depth ^G (mm)	Unct. (k=2)
835	41.5	0.90	9.76	9.76	9.76	0.16	1.67	± 12.0 %
900	41.5	0.97	9.63	9.63	9.63	0.31	0.93	± 12.0 %
1750	40.1	1.37	8.37	8.37	8.37	0.80	0.56	± 12.0 %
1900	40.0	1.40	8.15	8.15	8.15	0.51	0.72	± 12.0 %
2300	39.5	1.67	7.69	7.69	7.69	0.30	0.92	± 12.0 %
2450	39.2	1.80	7.24	7.24	7.24	0.32	0.85	± 12.0 %
5200	36.0	4.66	4.89	4.89	4.89	0.31	1.80	± 13.1 %
5300	35.9	4.76	4.77	4.77	4.77	0.31	1.80	± 13.1 %
5500	35.6	4.96	4.72	4.72	4.72	0.32	1.80	± 13.1 %
5600	35.5	5.07	4.59	4.59	4.59	0.30	1.80	± 13.1 %
5800	35.3	5.27	4.25	4.25	4.25	0.35	1.80	± 13.1 %

^C Frequency validity of ± 100 MHz only applies for DASY v4.4 and higher (see Page 2), else it is restricted to ± 50 MHz. The uncertainty is the RSS of the ConvF uncertainty at calibration frequency and the uncertainty for the indicated frequency band.

^F At frequencies below 3 GHz, the validity of tissue parameters (ϵ and σ) can be relaxed to ± 10% if liquid compensation formula is applied to measured SAR values. At frequencies above 3 GHz, the validity of tissue parameters (ϵ and σ) is restricted to ± 5%. The uncertainty is the RSS of the ConvF uncertainty for indicated target tissue parameters.

^G Alpha/Depth are determined during calibration. SPEAG warrants that the remaining deviation due to the boundary effect after compensation is always less than ± 1% for frequencies below 3 GHz and below ± 2% for frequencies between 3-6 GHz at any distance larger than half the probe tip diameter from the boundary.

EX3DV4- SN:3862

January 29, 2014

DASY/EASY - Parameters of Probe: EX3DV4 - SN:3862

Calibration Parameter Determined in Body Tissue Simulating Media

f (MHz) ^C	Relative Permittivity ^F	Conductivity (S/m) ^F	ConvF X	ConvF Y	ConvF Z	Alpha ^G	Depth ^G (mm)	Unct. (k=2)
835	55.2	0.97	9.52	9.52	9.52	0.31	1.06	± 12.0 %
1750	53.4	1.49	8.09	8.09	8.09	0.54	0.71	± 12.0 %
1900	53.3	1.52	7.63	7.63	7.63	0.25	1.04	± 12.0 %
2450	52.7	1.95	7.17	7.17	7.17	0.80	0.50	± 12.0 %
5200	49.0	5.30	4.46	4.46	4.46	0.35	1.90	± 13.1 %
5300	48.9	5.42	4.21	4.21	4.21	0.38	1.90	± 13.1 %
5500	48.6	5.65	4.04	4.04	4.04	0.38	1.90	± 13.1 %
5600	48.5	5.77	4.06	4.06	4.06	0.32	1.90	± 13.1 %
5800	48.2	6.00	4.08	4.08	4.08	0.44	1.90	± 13.1 %

^C Frequency validity of ± 100 MHz only applies for DASY v4.4 and higher (see Page 2), else it is restricted to ± 50 MHz. The uncertainty is the RSS of the ConvF uncertainty at calibration frequency and the uncertainty for the indicated frequency band.

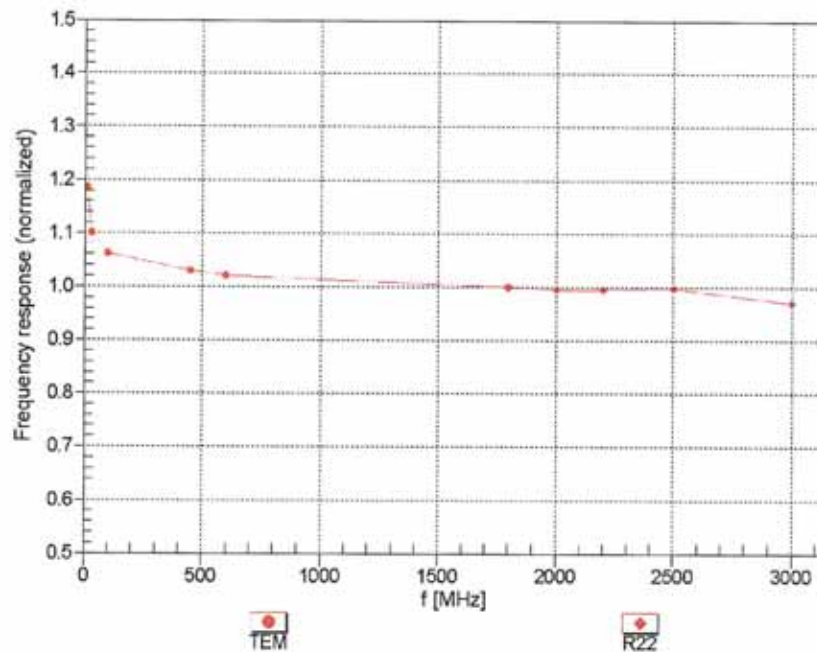
^F At frequencies below 3 GHz, the validity of tissue parameters (ϵ and σ) can be relaxed to ± 10% if liquid compensation formula is applied to measured SAR values. At frequencies above 3 GHz, the validity of tissue parameters (ϵ and σ) is restricted to ± 5%. The uncertainty is the RSS of the ConvF uncertainty for indicated target tissue parameters.

^G Alpha/Depth are determined during calibration. SPEAG warrants that the remaining deviation due to the boundary effect after compensation is always less than ± 1% for frequencies below 3 GHz and below ± 2% for frequencies between 3-6 GHz at any distance larger than half the probe tip diameter from the boundary.

EX3DV4- SN:3862

January 29, 2014

Frequency Response of E-Field (TEM-Cell:ifi110 EXX, Waveguide: R22)

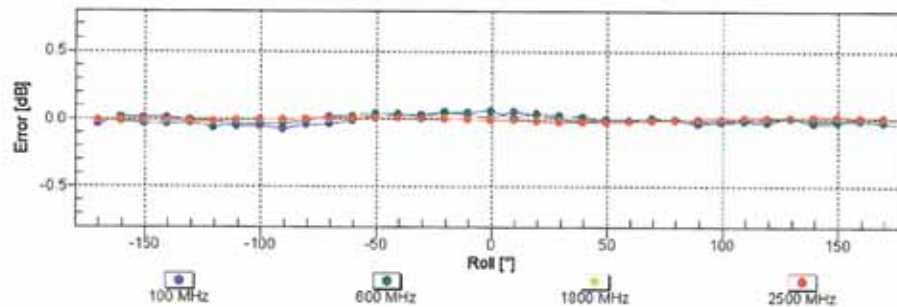
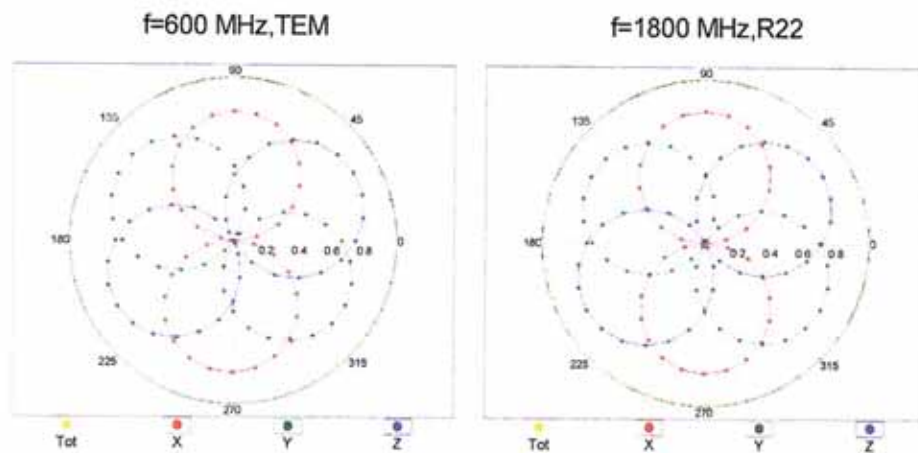


Uncertainty of Frequency Response of E-field: $\pm 6.3\%$ ($k=2$)

EX3DV4- SN:3862

January 29, 2014

Receiving Pattern (ϕ), $\theta = 0^\circ$

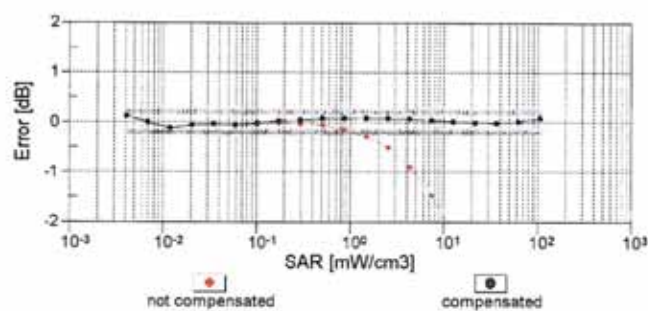
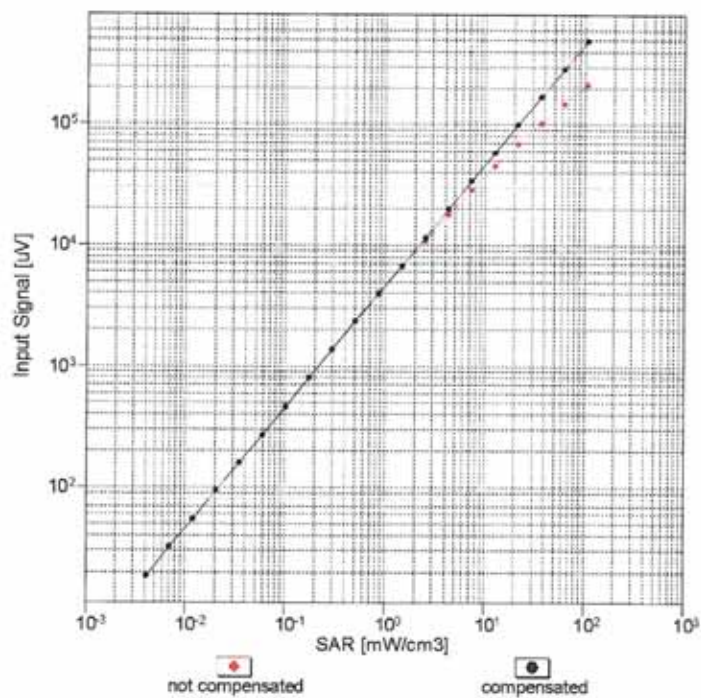


Uncertainty of Axial Isotropy Assessment: $\pm 0.5\%$ ($k=2$)

EX3DV4- SN:3862

January 29, 2014

Dynamic Range f(SAR_{head}) (TEM cell , f = 900 MHz)

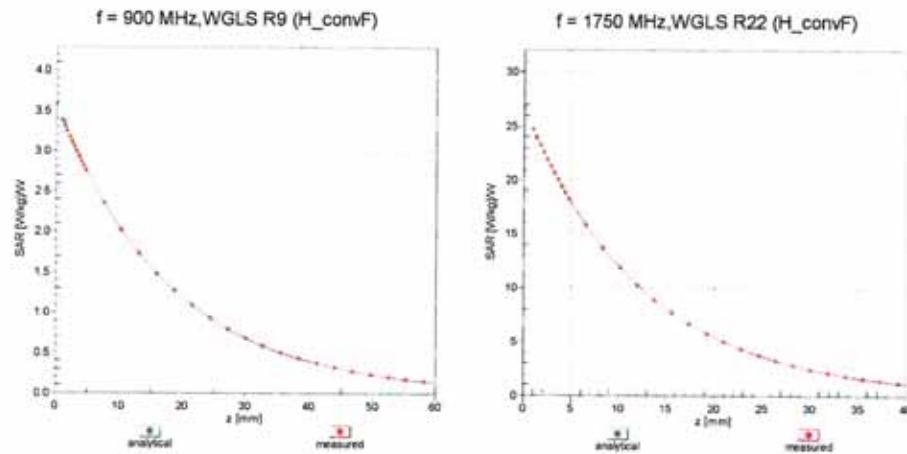


Uncertainty of Linearity Assessment: $\pm 0.6\%$ (k=2)

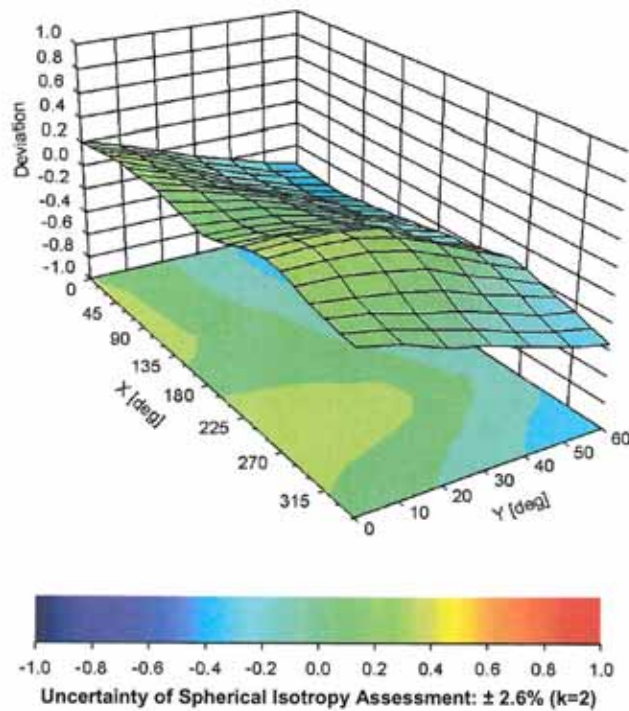
EX3DV4- SN:3862

January 29, 2014

Conversion Factor Assessment



Deviation from Isotropy in Liquid Error (ϕ , θ), f = 900 MHz



EX3DV4- SN:3862

January 29, 2014

DASY/EASY - Parameters of Probe: EX3DV4 - SN:3862

Other Probe Parameters

Sensor Arrangement	Triangular
Connector Angle (°)	-70.6
Mechanical Surface Detection Mode	enabled
Optical Surface Detection Mode	disabled
Probe Overall Length	337 mm
Probe Body Diameter	10 mm
Tip Length	9 mm
Tip Diameter	2.5 mm
Probe Tip to Sensor X Calibration Point	1 mm
Probe Tip to Sensor Y Calibration Point	1 mm
Probe Tip to Sensor Z Calibration Point	1 mm
Recommended Measurement Distance from Surface	2 mm

Appendix C.2 Calibration certificate for DAE

**Calibration Laboratory of
Schmid & Partner
Engineering AG**
Zeughausstrasse 43, 8004 Zurich, Switzerland



S Schweizerischer Kalibrierdienst
S Service suisse d'étalonnage
C Servizio svizzero di taratura
S Swiss Calibration Service

Accredited by the Swiss Accreditation Service (SAS)
The Swiss Accreditation Service is one of the signatories to the EA
Multilateral Agreement for the recognition of calibration certificates

Accreditation No.: **SCS 108**

Client **SGS (Dymstec)**

Certificate No: **DAE4-1340_May13**

CALIBRATION CERTIFICATE

Object **DAE4 - SD 000 D04 BJ - SN: 1340**

Calibration procedure(s) **QA CAL-06.v26
Calibration procedure for the data acquisition electronics (DAE)**



Calibration date: **May 28, 2013**

This calibration certificate documents the traceability to national standards, which realize the physical units of measurements (SI).
The measurements and the uncertainties with confidence probability are given on the following pages and are part of the certificate.

All calibrations have been conducted in the closed laboratory facility: environment temperature $(22 \pm 3)^{\circ}\text{C}$ and humidity $< 70\%$.

Calibration Equipment used (M&TE critical for calibration)

Primary Standards	ID #	Cal Date (Certificate No.)	Scheduled Calibration
Keithley Multimeter Type 2001	SN: 0810278	02-Oct-12 (No:12728)	Oct-13
Secondary Standards	ID #	Check Date (in house)	Scheduled Check
Auto DAE Calibration Unit	SE UWS 053 AA 1001	07-Jan-13 (in house check)	In house check: Jan-14
Calibrator Box V2.1	SE UMS 006 AA 1002	07-Jan-13 (in house check)	In house check: Jan-14

Calibrated by:	Name Eric Hainfeld	Function Technician	Signature 
Approved by:	Name Fin Bomholt	Function Deputy Technical Manager	Signature 

Issued: May 28, 2013

This calibration certificate shall not be reproduced except in full without written approval of the laboratory.

Calibration Laboratory of
Schmid & Partner
Engineering AG
Zeughausstrasse 43, 8004 Zurich, Switzerland



S Schweizerischer Kalibrierdienst
C Service suisse d'étalonnage
S Servizio svizzero di taratura
S Swiss Calibration Service

Accredited by the Swiss Accreditation Service (SAS)
The Swiss Accreditation Service is one of the signatories to the EA
Multilateral Agreement for the recognition of calibration certificates

Accreditation No.: **SCS 108**

Glossary

DAE data acquisition electronics
Connector angle information used in DASY system to align probe sensor X to the robot coordinate system.

Methods Applied and Interpretation of Parameters

- **DC Voltage Measurement:** Calibration Factor assessed for use in DASY system by comparison with a calibrated instrument traceable to national standards. The figure given corresponds to the full scale range of the voltmeter in the respective range.
- **Connector angle:** The angle of the connector is assessed measuring the angle mechanically by a tool inserted. Uncertainty is not required.
- The following parameters as documented in the Appendix contain technical information as a result from the performance test and require no uncertainty.
 - **DC Voltage Measurement Linearity:** Verification of the Linearity at +10% and -10% of the nominal calibration voltage. Influence of offset voltage is included in this measurement.
 - **Common mode sensitivity:** Influence of a positive or negative common mode voltage on the differential measurement.
 - **Channel separation:** Influence of a voltage on the neighbor channels not subject to an input voltage.
 - **AD Converter Values with inputs shorted:** Values on the internal AD converter corresponding to zero input voltage
 - **Input Offset Measurement:** Output voltage and statistical results over a large number of zero voltage measurements.
 - **Input Offset Current:** Typical value for information; Maximum channel input offset current, not considering the input resistance.
 - **Input resistance:** Typical value for information: DAE input resistance at the connector, during internal auto-zeroing and during measurement.
 - **Low Battery Alarm Voltage:** Typical value for information. Below this voltage, a battery alarm signal is generated.
 - **Power consumption:** Typical value for information. Supply currents in various operating modes.

DC Voltage Measurement

A/D - Converter Resolution nominal

High Range: 1LSB = 6.1 μ V , full range = -100...+300 mV

Low Range: 1LSB = 61nV , full range = -1.....+3mV

DASY measurement parameters: Auto Zero Time: 3 sec; Measuring time: 3 sec

Calibration Factors	X	Y	Z
High Range	404.549 \pm 0.02% (k=2)	404.470 \pm 0.02% (k=2)	404.562 \pm 0.02% (k=2)
Low Range	3.98550 \pm 1.50% (k=2)	3.96123 \pm 1.50% (k=2)	4.01505 \pm 1.50% (k=2)

Connector Angle

Connector Angle to be used in DASY system	256.0 $^{\circ}$ \pm 1 $^{\circ}$
---	-------------------------------------

Appendix

1. DC Voltage Linearity

High Range	Reading (μ V)	Difference (μ V)	Error (%)
Channel X + Input	199998.32	2.43	0.00
Channel X + Input	20002.47	2.03	0.01
Channel X - Input	-19998.98	2.03	-0.01
Channel Y + Input	199997.70	1.83	0.00
Channel Y + Input	19998.45	-1.90	-0.01
Channel Y - Input	-20002.56	-1.52	0.01
Channel Z + Input	199999.09	3.10	0.00
Channel Z + Input	19998.93	-1.37	-0.01
Channel Z - Input	-20004.14	-3.09	0.02

Low Range	Reading (μ V)	Difference (μ V)	Error (%)
Channel X + Input	2002.39	1.58	0.08
Channel X + Input	201.78	0.64	0.32
Channel X - Input	-198.30	0.48	-0.24
Channel Y + Input	2001.37	0.65	0.03
Channel Y + Input	200.79	-0.20	-0.10
Channel Y - Input	-199.15	-0.30	0.15
Channel Z + Input	2001.45	0.74	0.04
Channel Z + Input	199.68	-1.47	-0.73
Channel Z - Input	-200.11	-1.24	0.63

2. Common mode sensitivity

DASY measurement parameters: Auto Zero Time: 3 sec; Measuring time: 3 sec

	Common mode Input Voltage (mV)	High Range Average Reading (μ V)	Low Range Average Reading (μ V)
Channel X	200	2.10	0.13
	- 200	1.92	-0.25
Channel Y	200	-13.32	-13.31
	- 200	12.50	12.53
Channel Z	200	-11.10	-11.03
	- 200	8.58	8.38

3. Channel separation

DASY measurement parameters: Auto Zero Time: 3 sec; Measuring time: 3 sec

	Input Voltage (mV)	Channel X (μ V)	Channel Y (μ V)	Channel Z (μ V)
Channel X	200	-	-0.45	-3.45
Channel Y	200	6.42	-	0.38
Channel Z	200	10.51	3.91	-

4. AD-Converter Values with inputs shorted

DASY measurement parameters: Auto Zero Time: 3 sec; Measuring time: 3 sec

	High Range (LSB)	Low Range (LSB)
Channel X	15826	15920
Channel Y	16272	15667
Channel Z	16043	16075

5. Input Offset Measurement

DASY measurement parameters: Auto Zero Time: 3 sec; Measuring time: 3 sec

Input 10M Ω

	Average (μ V)	min. Offset (μ V)	max. Offset (μ V)	Std. Deviation (μ V)
Channel X	-0.72	-1.77	0.73	0.38
Channel Y	-1.29	-3.22	-0.26	0.36
Channel Z	-2.15	-3.00	-1.17	0.39

6. Input Offset Current

Nominal Input circuitry offset current on all channels: <25fA

7. Input Resistance (Typical values for information)

	Zeroing (kOhm)	Measuring (MOhm)
Channel X	200	200
Channel Y	200	200
Channel Z	200	200

8. Low Battery Alarm Voltage (Typical values for information)

Typical values	Alarm Level (VDC)
Supply (+ Vcc)	+7.9
Supply (- Vcc)	-7.6

9. Power Consumption (Typical values for information)

Typical values	Switched off (mA)	Stand by (mA)	Transmitting (mA)
Supply (+ Vcc)	+0.01	+6	+14
Supply (- Vcc)	-0.01	-8	-9

Appendix C.3 Calibration certificate for Dipole

Calibration Laboratory of
Schmid & Partner
Engineering AG
Zeughausstrasse 43, 8004 Zurich, Switzerland



S Schweizerischer Kalibrierdienst
C Service suisse d'étalonnage
S Servizio svizzero di taratura
S Swiss Calibration Service



Accredited by the Swiss Accreditation Service (SAS)
The Swiss Accreditation Service is one of the signatories to the EA
Multilateral Agreement for the recognition of calibration certificates

Accreditation No: **SCS 108**

Handwritten signature and date: 2013.10.14
Certificate No: **D2450V2-892_Sep13**

Client **SGS (Dymstec)**

CALIBRATION CERTIFICATE

Object **D2450V2 - SN: 892**

Calibration procedure(s) **QA CAL-05.v9**
Calibration procedure for dipole validation kits above 700 MHz

Calibration date: **September 26, 2013**

This calibration certificate documents the traceability to national standards, which realize the physical units of measurements (SI).
The measurements and the uncertainties with confidence probability are given on the following pages and are part of the certificate.

All calibrations have been conducted in the closed laboratory facility: environment temperature $(22 \pm 3)^{\circ}\text{C}$ and humidity $< 70\%$.

Calibration Equipment used (M&TE critical for calibration)

Primary Standards	ID #	Cal Date (Certificate No.)	Scheduled Calibration
Power meter EPM-442A	GB37480704	01-Nov-12 (No. 217-01640)	Oct-13
Power sensor HP 8481A	US37292783	01-Nov-12 (No. 217-01640)	Oct-13
Reference 20 dB Attenuator	SN: 5058 (20k)	04-Apr-13 (No. 217-01736)	Apr-14
Type-N mismatch combination	SN: 5047.3 / 06327	04-Apr-13 (No. 217-01739)	Apr-14
Reference Probe ES3DV3	SN: 3205	28-Dec-12 (No. ES3-3205_Dec12)	Dec-13
DAE4	SN: 601	25-Apr-13 (No. DAE4-601_Apr13)	Apr-14
Secondary Standards	ID #	Check Date (in house)	Scheduled Check
Power sensor HP 8481A	MY41092317	18-Oct-02 (in house check Oct-11)	In house check: Oct-13
RF generator R&S SMT-06	100005	04-Aug-99 (in house check Oct-11)	In house check: Oct-13
Network Analyzer HP 8753E	US37390585 S4206	18-Oct-01 (in house check Oct-12)	In house check: Oct-13

	Name	Function	Signature
Calibrated by:	Jeton Kastrati	Laboratory Technician	<i>[Signature]</i>
Approved by:	Katja Pokovic	Technical Manager	<i>[Signature]</i>

Issued: September 27, 2013

This calibration certificate shall not be reproduced except in full without written approval of the laboratory.

Calibration Laboratory of
Schmid & Partner
Engineering AG
Zeughausstrasse 43, 8004 Zurich, Switzerland



S Schweizerischer Kalibrierdienst
C Service suisse d'étalonnage
S Servizio svizzero di taratura
S Swiss Calibration Service

Accredited by the Swiss Accreditation Service (SAS)
The Swiss Accreditation Service is one of the signatories to the EA
Multilateral Agreement for the recognition of calibration certificates

Accreditation No.: **SCS 108**

Glossary:

TSL	tissue simulating liquid
ConvF	sensitivity in TSL / NORM x,y,z
N/A	not applicable or not measured

Calibration is Performed According to the Following Standards:

- IEEE Std 1528-2003, "IEEE Recommended Practice for Determining the Peak Spatial-Averaged Specific Absorption Rate (SAR) in the Human Head from Wireless Communications Devices: Measurement Techniques", December 2003
- IEC 62209-1, "Procedure to measure the Specific Absorption Rate (SAR) for hand-held devices used in close proximity to the ear (frequency range of 300 MHz to 3 GHz)", February 2005
- KDB 865664, "SAR Measurement Requirements for 100 MHz to 6 GHz"

Additional Documentation:

- DASY4/5 System Handbook

Methods Applied and Interpretation of Parameters:

- Measurement Conditions:** Further details are available from the Validation Report at the end of the certificate. All figures stated in the certificate are valid at the frequency indicated.
- Antenna Parameters with TSL:** The dipole is mounted with the spacer to position its feed point exactly below the center marking of the flat phantom section, with the arms oriented parallel to the body axis.
- Feed Point Impedance and Return Loss:** These parameters are measured with the dipole positioned under the liquid filled phantom. The impedance stated is transformed from the measurement at the SMA connector to the feed point. The Return Loss ensures low reflected power. No uncertainty required.
- Electrical Delay:** One-way delay between the SMA connector and the antenna feed point. No uncertainty required.
- SAR measured:** SAR measured at the stated antenna input power.
- SAR normalized:** SAR as measured, normalized to an input power of 1 W at the antenna connector.
- SAR for nominal TSL parameters:** The measured TSL parameters are used to calculate the nominal SAR result.

The reported uncertainty of measurement is stated as the standard uncertainty of measurement multiplied by the coverage factor $k=2$, which for a normal distribution corresponds to a coverage probability of approximately 95%.

Measurement Conditions

DASY system configuration, as far as not given on page 1.

DASY Version	DASY5	V52.8.7
Extrapolation	Advanced Extrapolation	
Phantom	Modular Flat Phantom	
Distance Dipole Center - TSL	10 mm	with Spacer
Zoom Scan Resolution	dx, dy, dz = 5 mm	
Frequency	2450 MHz \pm 1 MHz	

Head TSL parameters

The following parameters and calculations were applied.

	Temperature	Permittivity	Conductivity
Nominal Head TSL parameters	22.0 °C	39.2	1.80 mho/m
Measured Head TSL parameters	(22.0 \pm 0.2) °C	39.4 \pm 6 %	1.83 mho/m \pm 6 %
Head TSL temperature change during test	< 0.5 °C	----	----

SAR result with Head TSL

SAR averaged over 1 cm ³ (1 g) of Head TSL	Condition	
SAR measured	250 mW input power	13.2 W/kg
SAR for nominal Head TSL parameters	normalized to 1W	52.4 W/kg \pm 17.0 % (k=2)

SAR averaged over 10 cm ³ (10 g) of Head TSL	condition	
SAR measured	250 mW input power	6.12 W/kg
SAR for nominal Head TSL parameters	normalized to 1W	24.4 W/kg \pm 16.5 % (k=2)

Body TSL parameters

The following parameters and calculations were applied.

	Temperature	Permittivity	Conductivity
Nominal Body TSL parameters	22.0 °C	52.7	1.95 mho/m
Measured Body TSL parameters	(22.0 \pm 0.2) °C	52.2 \pm 6 %	2.00 mho/m \pm 6 %
Body TSL temperature change during test	< 0.5 °C	----	----

SAR result with Body TSL

SAR averaged over 1 cm ³ (1 g) of Body TSL	Condition	
SAR measured	250 mW input power	12.7 W/kg
SAR for nominal Body TSL parameters	normalized to 1W	50.1 W/kg \pm 17.0 % (k=2)

SAR averaged over 10 cm ³ (10 g) of Body TSL	condition	
SAR measured	250 mW input power	5.85 W/kg
SAR for nominal Body TSL parameters	normalized to 1W	23.2 W/kg \pm 16.5 % (k=2)

Appendix

Antenna Parameters with Head TSL

Impedance, transformed to feed point	53.9 Ω + 2.2 j Ω
Return Loss	- 27.2 dB

Antenna Parameters with Body TSL

Impedance, transformed to feed point	50.1 Ω + 4.3 j Ω
Return Loss	- 27.3 dB

General Antenna Parameters and Design

Electrical Delay (one direction)	1.125 ns
----------------------------------	----------

After long term use with 100W radiated power, only a slight warming of the dipole near the feedpoint can be measured.

The dipole is made of standard semirigid coaxial cable. The center conductor of the feeding line is directly connected to the second arm of the dipole. The antenna is therefore short-circuited for DC-signals. On some of the dipoles, small end caps are added to the dipole arms in order to improve matching when loaded according to the position as explained in the "Measurement Conditions" paragraph. The SAR data are not affected by this change. The overall dipole length is still according to the Standard.

No excessive force must be applied to the dipole arms, because they might bend or the soldered connections near the feedpoint may be damaged.

Additional EUT Data

Manufactured by	SPEAG
Manufactured on	October 06, 2011

DASY5 Validation Report for Head TSL

Date: 26.09.2013

Test Laboratory: SPEAG, Zurich, Switzerland

DUT: Dipole 2450 MHz; Type: D2450V2; Serial: D2450V2 - SN: 892

Communication System: UID 0 - CW ; Frequency: 2450 MHz

Medium parameters used: $f = 2450$ MHz; $\sigma = 1.83$ S/m; $\epsilon_r = 39.4$; $\rho = 1000$ kg/m³

Phantom section: Flat Section

Measurement Standard: DASY5 (IEEE/IEC/ANSI C63.19-2007)

DASY52 Configuration:

- Probe: ES3DV3 - SN3205; ConvF(4.52, 4.52, 4.52); Calibrated: 28.12.2012;
- Sensor-Surface: 3mm (Mechanical Surface Detection)
- Electronics: DAE4 Sn601; Calibrated: 25.04.2013
- Phantom: Flat Phantom 5.0 (front); Type: QD000P50AA; Serial: 1001
- DASY52 52.8.7(1137); SEMCAD X 14.6.10(7164)

Dipole Calibration for Head Tissue/Pin=250 mW, d=10mm/Zoom Scan (7x7x7)/Cube 0:

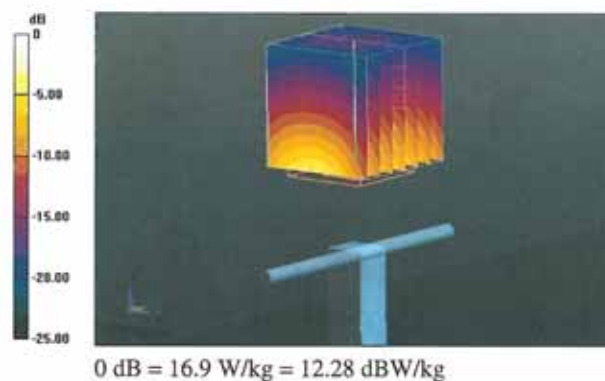
Measurement grid: dx=5mm, dy=5mm, dz=5mm

Reference Value = 93.764 V/m; Power Drift = 0.04 dB

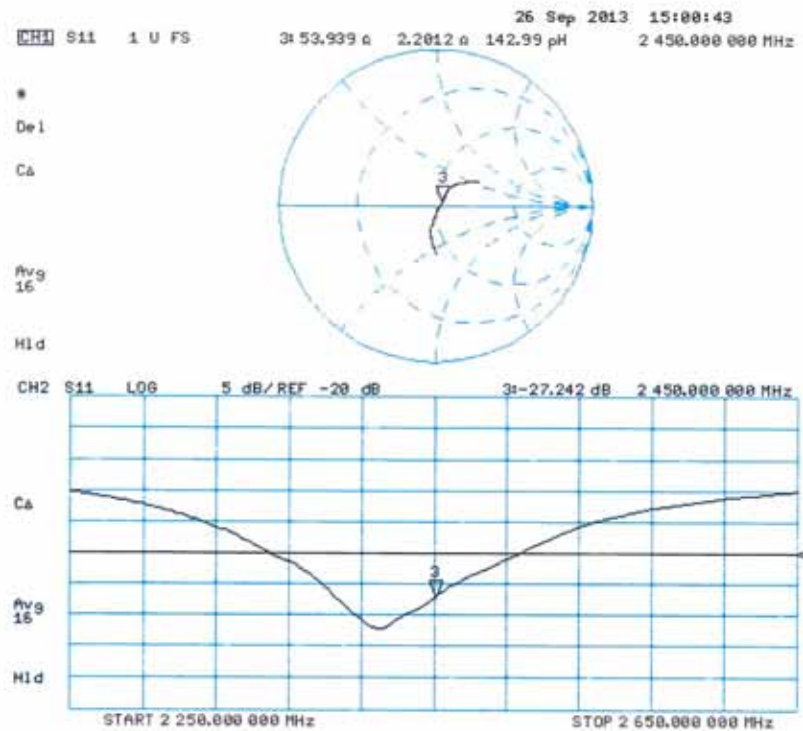
Peak SAR (extrapolated) = 27.5 W/kg

SAR(1 g) = 13.2 W/kg; SAR(10 g) = 6.12 W/kg

Maximum value of SAR (measured) = 16.9 W/kg



Impedance Measurement Plot for Head TSL



DASY5 Validation Report for Body TSL

Date: 26.09.2013

Test Laboratory: SPEAG, Zurich, Switzerland

DUT: Dipole 2450 MHz; Type: D2450V2; Serial: D2450V2 - SN: 892

Communication System: UID 0 - CW ; Frequency: 2450 MHz

Medium parameters used: $f = 2450$ MHz; $\sigma = 2$ S/m; $\epsilon_r = 52.2$; $\rho = 1000$ kg/m³

Phantom section: Flat Section

Measurement Standard: DASY5 (IEEE/IEC/ANSI C63.19-2007)

DASY52 Configuration:

- Probe: ES3DV3 - SN3205; ConvF(4.42, 4.42, 4.42); Calibrated: 28.12.2012;
- Sensor-Surface: 3mm (Mechanical Surface Detection)
- Electronics: DAE4 Sn601; Calibrated: 25.04.2013
- Phantom: Flat Phantom 5.0 (back); Type: QD000P50AA; Serial: 1002
- DASY52 52.8.7(1137); SEMCAD X 14.6.10(7164)

Dipole Calibration for Body Tissue/Pin=250 mW, d=10mm/Zoom Scan (7x7x7)/Cube 0:

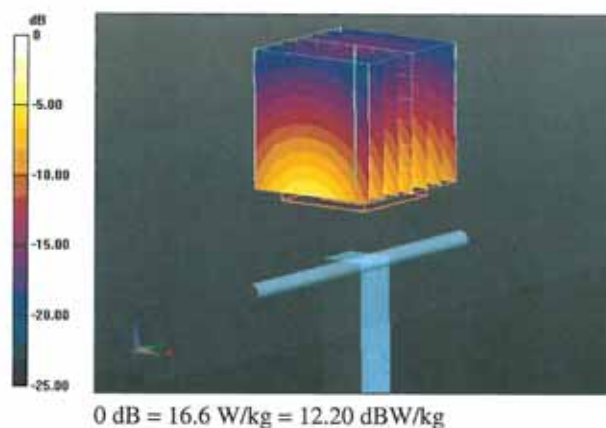
Measurement grid: dx=5mm, dy=5mm, dz=5mm

Reference Value = 93.764 V/m; Power Drift = 0.01 dB

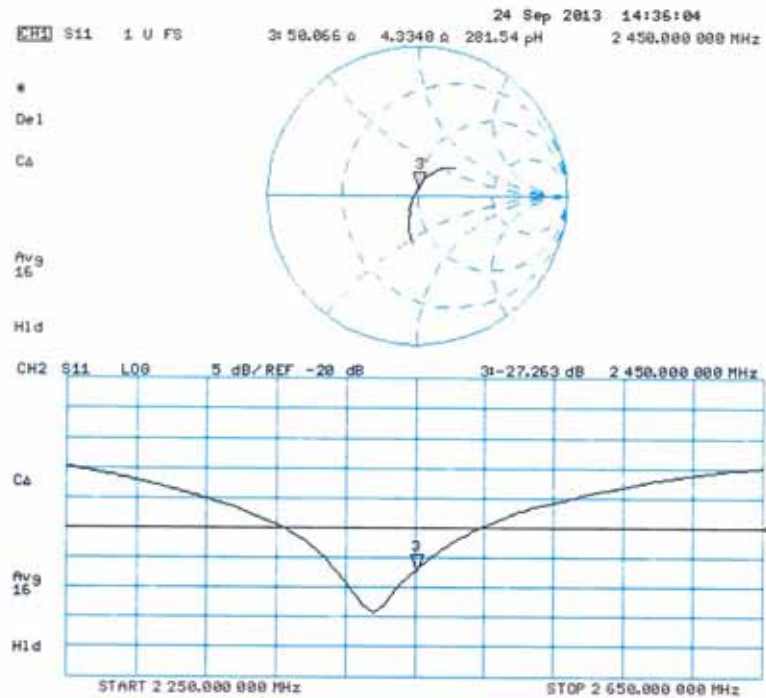
Peak SAR (extrapolated) = 26.5 W/kg

SAR(1 g) = 12.7 W/kg; SAR(10 g) = 5.85 W/kg

Maximum value of SAR (measured) = 16.6 W/kg



Impedance Measurement Plot for Body TSL



-THE END-