

POCKET TV

Installation and Usage Guide

BLUE'cord Technology corp.

FCC Information

This device complies with Part 15 of the FCC Rules. Operation is subject to the following two conditions:

- (1) This Device may not cause harmful interface, and
- (2) This device must accept any interference received, including interference that may cause undesired operation.

Note: This equipment has been tested and found to comply with the limits for CLASS B digital device, pursuant to Part 15 of FCC Rules. These limits are designed to provide reasonable protection against harmful interference when the equipment is operated in a commercial environment. This equipment generates, uses and can radiate radio frequency energy and, if not installed and used in accordance with the instructions, may cause harmful interference to radio communications. However, there is no guarantee that interference will not occur in a particular installation. If this equipment does cause harmful interference to radio or television reception, which can be determined by turning the equipment off and on, the user is encouraged to try correct the interference by one or more of the following measures:

- 1.1. Reorient or relocate the receiving antenna.
- 1.2. Increase the separation between the equipment and receiver.
- 1.3. Connect the equipment into an outlet on a circuit different from that to which receiver is connected.
- 1.4. Consult the dealer or experienced radio/TV technician for help.

WARNING

Changes or modifications not expressly approved by the manufacturer could void the user's authority to operate the equipment.

♣ Introduction

We like to thank you for choosing POCKET TV.

BLUE'cord Technology corp. would appreciate to assist you with another order in the near future and are pleased to welcome any new customer recommend by you.

1. POCKET TV Products



Figure 1. POCKET TV



Figure 2. POCKET TV Cable

2. Before use POCKET TV

- (1) This product can be used in computer with USB(Universal Serial Bus) 2.0 port.
- (2) This product can install and run on Microsoft Windows 2000, XP.
- (3) It may be difference of performance by computer performance.
- (4) This product and guide's contents may be difference for function improvement, the shape or contents may be changed without declaration.
- (5) Because of improvement of function or stability, this product and guide's contents is upgrading now, and there is program of new version in our company's homepage (www.bluecord.co.kr).
- (6) If you don't keep this guide's indication when this product was installed/used, it may result in malfunction or damage of your computer or POCKET TV.

D A N G E R

DO NOT unplug the POCKET TV from the USB port of your computer when lighting the power lamp of the POCKET TV. Otherwise, it may result in malfunction or damage of your computer or POCKET TV.

It were spent 10 seconds and 30 seconds on starting and finishing the POCKET TV program, respectively, for the safe working. At this time, **DO NOT** unplug the POCKET TV from the USB port of your computer. Otherwise, it may result in malfunction or damage of your computer or POCKET TV.

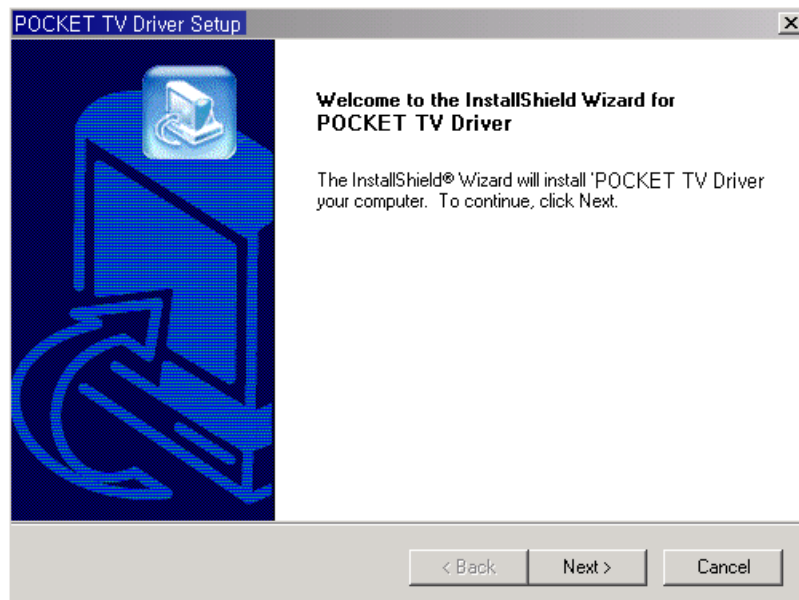
3. Installation of POCKET TV

– Please install the POCKET TV software before insert the POCKET TV into your USB port.–

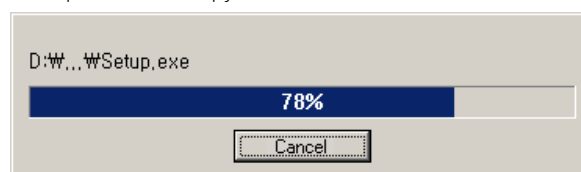
(1) Insert the POCKET TV CD, then the autorun window to install POCKET TV will be displayed automatically.



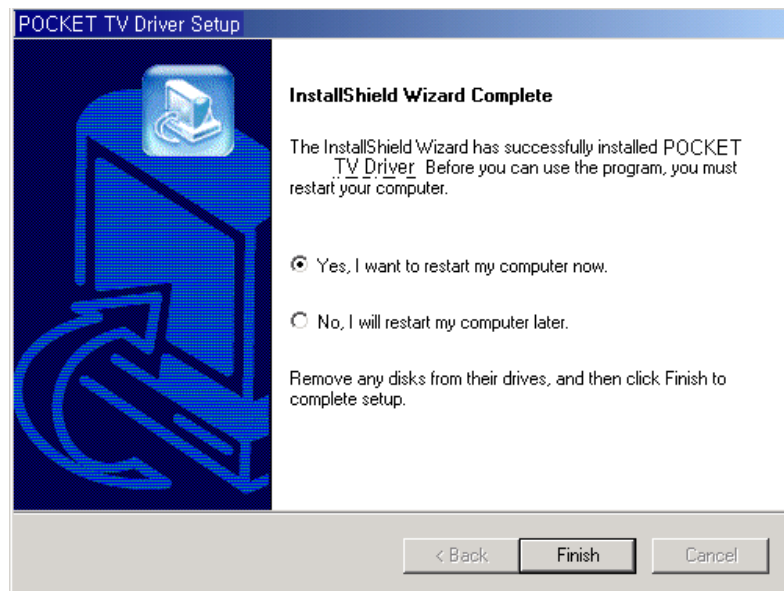
(2) Please, click DRIVER button.



(3) The window of the process to copy data will be seen.



(4) Please, Click the **Finish** button.



(5) As same method, do install the TV PLUS program.

(6) Insert the POCKET TV into the USB port of your computer after system rebooting.

Note : Don't insert POCKET TV into the USB port before computer rebooting is NOT finish.

(7) A window will be displayed with the message that a new hardware is found. And next, a window will be displayed with the message that 'POCKET TV' is found.

(8) All steps for the installation of POCKET TV will be finished after file copy.

(9) If hardware setting is successfully finished, there is 'POCKET TV' in MyComputer/Control Panel/System/Device Manager/Imaging Device.

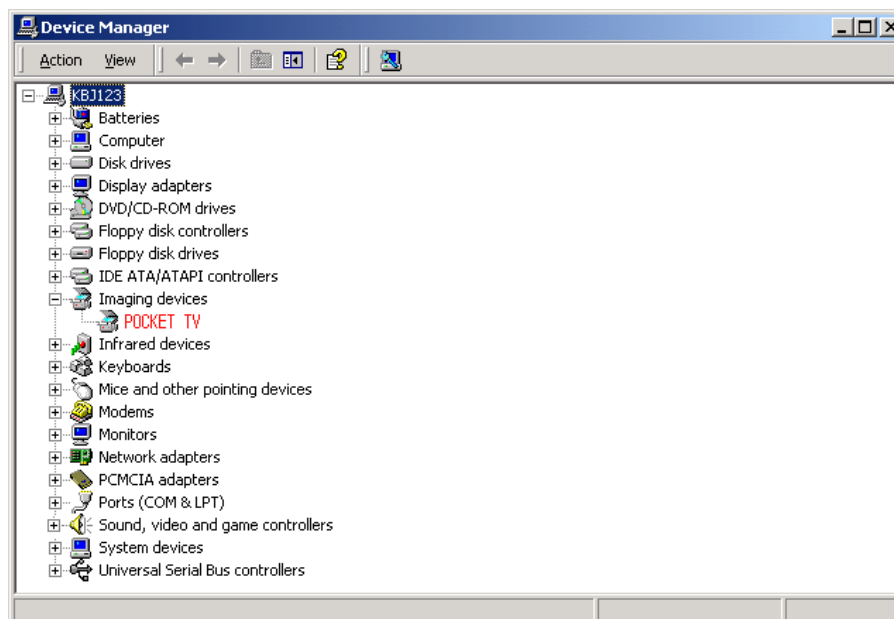


Figure 3. System Properties

(14) To run the program, double click the TV PLUS icon or [Start]→[Program]→[Honestech]→[TV PLUS]

Note : Insert POCKET TV into the USB port before run the program.

4. POCKET TV Control Panel and Function

(1) POCKET TV Control Panel

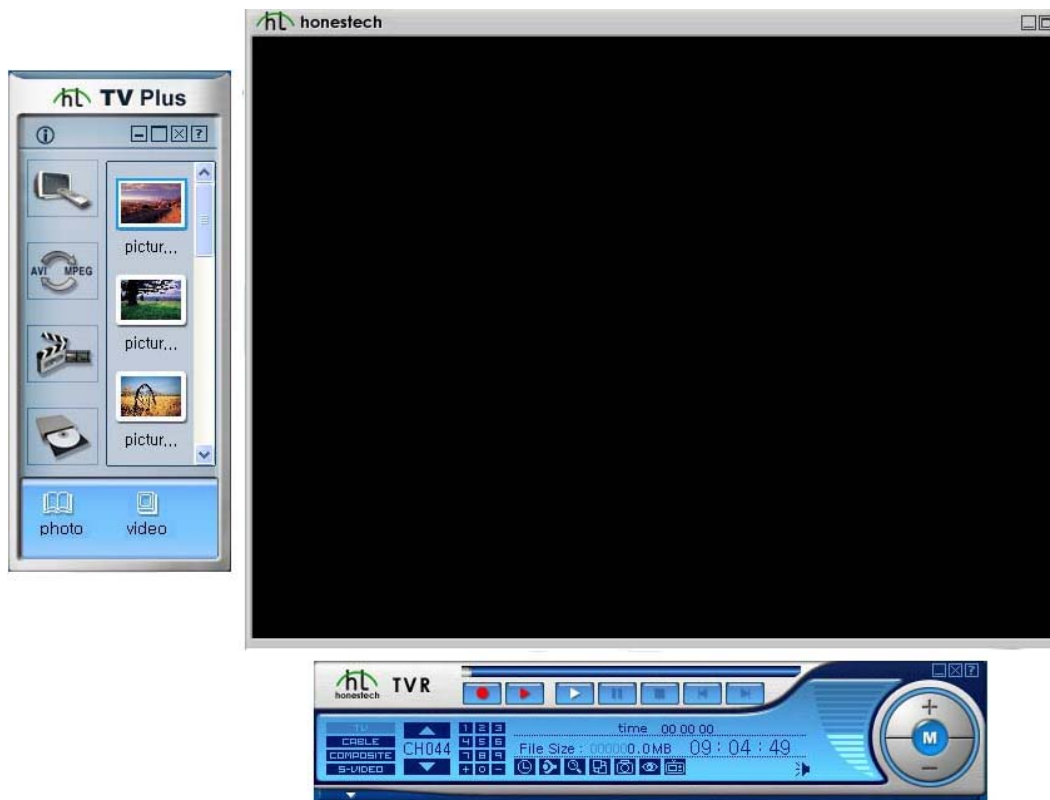


Figure 4. POCKET TV Control Panel and Screen Window

(2) TV PLUS Window



If you want to know the details of TV PLUS program, click the ? mark.

(3) TVR Screen

- 1) If you click mouse right button on TVR Screen, 3 menus are appeared.

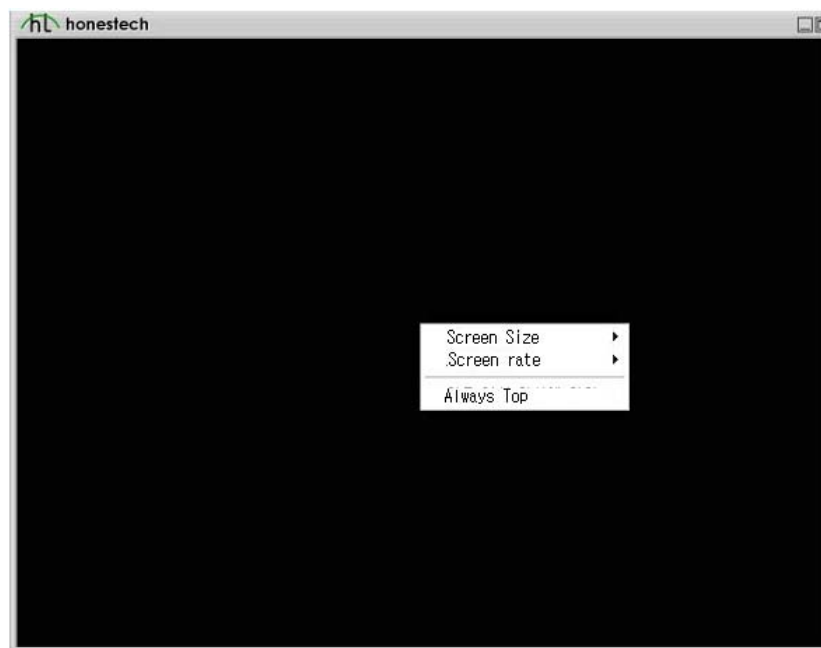
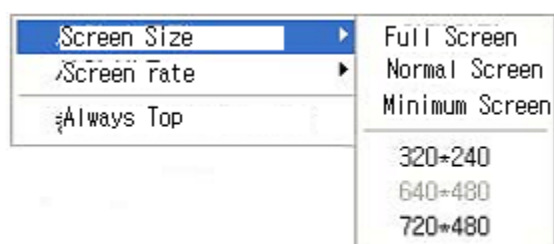
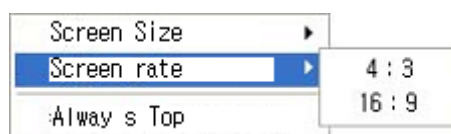


Figure 5. TVR Screen

– Screen size menu



– Screen rate menu



– Always Top menu



(4) Main Control Panel


- If you click the  button on the control panel, the using methods of honestech TV are displayed.



Figure 6. Main Control Box






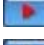









- If you click the  button, you can check the recorded movie file information.



Figure 7. File Pool

-  Button for editing the movie file
-  Button for attaching the movie file in e-mail.
-  Button for displaying the recorded movie file.
-  Button for help.
-  Recording button for movie file
-  Time shift button
-  Play button for the recorded movie file
-  Pause button
-  Stop button
-  Volume Up
-  Volume Down
-  Mute button
-  Change button for input video source (TV, CATV, Composite and S-Video)
-  Channel change button

-  Help
-  Scheduler function button
Reserved recording function
-  Setting button
Recording Format, Searching channel etc.
-  Auto channel searching
-  Change button for skin
-  Still capture button
-  Surfing channel

·Address : 59-4, Hwaam-dong, Yusong-gu, Taejon, Korea, 305-348
Bluecord Technology Corporation.
·Tel : + 82-42-601-4557
·Fax : + 82-42-601-4599
·E-Mail : support@bluecord.co.kr
·Home Page : <http://www.bluecord.co.kr>