

The logo for the Federal Communications Commission (FCC), consisting of the letters 'F' and 'C' in a stylized, bold, black font, with a circle around the 'C'.

# Test Report

Product Name : Wireless Colour Video and Audio Baby Monitor

Model No. : eM-50T

FCC ID.: RKKEM-50T

Applicant : Electramax International Limited

Address : The Baby Monitor Warehouse Building 3, Chiswick Business Park,  
566 Chiswick High Road London. W4 5YA UNITED KINGDOM

Date of Receipt : Oct. 14, 2003

Date of Test : Jan. 02, 2003

Report No. : 03AH023FI

The Test Results relate only to the samples tested.

The test report shall not be reproduced except in full without the written approval of Quietek Corporation.

This report must not be used to claim product endorsement by NVLAP any agency of the U.S. Government

# Test Report Certification

Test Date : Jan. 02, 2003

Report No. : 03AH023FI



Accredited by NIST (NVLAP)

NVLAP Lab Code: 200347-0

Product Name : Wireless Colour Video and Audio Baby Monitor

Applicant : Electramax International Limited

Address : The Baby Monitor Warehouse Building 3, Chiswick Business Park,  
566 Chiswick High Road London. W4 5YA UNITED KINGDOM

Manufacturer : TRANWO TECHNOLOGY CORP.

Model No. : eM-50T

FCC ID. : RKKEM-50T

Rated Voltage : AC 120V/60Hz

Trade Name : Electramax International Limited

Measurement Standard : FCC Part 15 Subpart C Paragraph 15.249

Measurement Procedure : ANSI C63.4:1992

Test Result : Complied




The Test Results relate only to the samples tested.

The test report shall not be reproduced except in full without the written approval of Quietek Corporation.

This report must not be used to claim product endorsement by NVLAP any agency of the U.S. Government

Documented By :   
( Carol Tsai )

Tested By :   
( Ken Hsu )

Approved By :   
( Kevin Wang )

# TABLE OF CONTENTS

Description	Page
<b>1. GENERAL INFORMATION .....</b>	<b>4</b>
1.1. EUT Description.....	4
1.2. Operation Description .....	5
1.3. Tested System Details.....	6
1.4. Configuration of Tested System .....	6
1.5. EUT Exercise Software .....	6
1.6. Test Facility .....	7
<b>2. Conducted Emission .....</b>	<b>8</b>
2.1. Test Equipment .....	8
2.2. Test Setup .....	8
2.3. Limits.....	8
2.4. Test Procedure .....	9
2.5. Test Result of Conducted Emission.....	10
<b>3. Radiated Emission .....</b>	<b>12</b>
3.1. Test Equipment .....	12
3.2. Test Setup .....	12
3.3. Limits.....	13
3.4. Test Procedure .....	14
3.5. Test Result of Radiated Emission.....	15
<b>4. Band Edge .....</b>	<b>22</b>
4.1. Test Equipment .....	22
4.2. Test Setup .....	22
4.3. Test Condition.....	23
4.4. Standard Requirement .....	23
4.5. Test Result of Band Edge .....	24
<b>5. EMI Reduction Method During Compliance Testing.....</b>	<b>26</b>
Attachment 1: EUT Test Photographs	
Attachment 2: EUT Detailed Photographs	

## 1. GENERAL INFORMATION

### 1.1. EUT Description

Product Name : Wireless Colour Video and Audio Baby Monitor  
Trade Name : Electramax International Limited  
FCC ID. : RKKEM-50T  
Model No. : eM-50T  
Frequency Range : 2434MHz to 2473MHz  
Channel Number : 3  
Type of Modulation : FM  
Antenna type : Soldered on PCB  
Operator Selection of : Manual Switch  
Operating Frequency  
Power Adapter : AHEAD, MW35-0900300  
Cable Out: Non-shielded, 1.9m

#### Frequency of each Channel

Channel	Frequency	Channel	Frequency	Channel	Frequency
Channel 1:	2434 MHz	Channel 2:	2453 MHz	Channel 3:	2473 MHz

#### Note:

1. This device is a 2.4GHz Wireless Colour Video and Audio Baby Monitor included a 2.4GHz transmitting function.
2. Regards to the frequency band operation, the lowest 、 middle and highest frequency of channel were selected to perform the test, then shown on this report.
3. These tests were conducted on a sample of the equipment for the purpose of demonstrating compliance with Part 15 Subpart C Paragraph 15.249.
4. This device is a composite device in accordance with part 15 regulations. The function for the receiver was measured and made a test report that the report number is 03AH023F, certified under verification.
5. Quietek had verified the construction and function in typical operation, then shown in this test report.

## 1.2. Operation Description

The EUT is Wireless Colour Video and Audio Baby Monitor. The operation frequency is from 2.434GHz to 2.473GHz with FM modulation. Three manually selectable channels were built in the EUT. the signal will be transmitted through 2.4 GHz FM RF signal from the soldered on PCB antenna from EUT to receiver. DC 6V shall be provided for EUT operation.

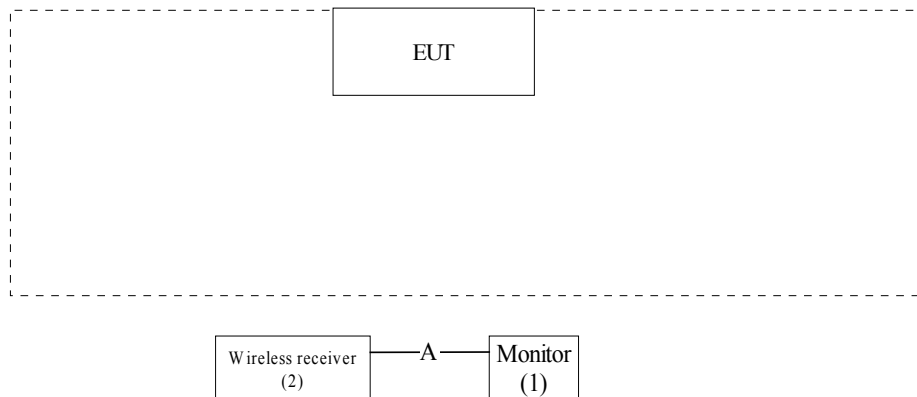
### 1.3. Tested System Details

The types for all equipment, plus descriptions of all cables used in the tested system (including inserted cards ) are:

	Product	Manufacturer	Model No.	Serial No.	Power Cord
(1)	Monitor	SONY	PVM-14M2U	2013141	Non-shielded, 1.6m
(2)	Wireless receiver	TRANWO	TTA-13R	N/A	Non-shielded, 3.6m.

	Signal Cable Type	Signal cable Description
A.	AV Cable	Non-shielded, 1.5m

### 1.4. Configuration of Tested System



### 1.5. EUT Exercise Software

- 1.5.1 Setup the EUT and display as shown on 1.4.
- 1.5.2 Turn on the power of all equipment.
- 1.5.3 The EUT will transmit the signal.
- 1.5.4 Repeat the above procedure 1.5.2 to 1.5.3

## 1.6. Test Facility

Ambient conditions in the laboratory:

Items	Required (IEC 68-1)	Actual
Temperature (°C)	15-35	20-35
Humidity (%RH)	25-75	50-65
Barometric pressure (mbar)	860-1060	950-1000

Site Description: November 3, 1998 File on  
 Federal Communications Commission  
 FCC Engineering Laboratory  
 7435 Oakland Mills Road  
 Columbia, MD 21046  
 Reference 31040/SIT1300F2  
 September 30, 2003 Accreditation on NVLAP  
 NVLAP Lab Code: 200347-0



Site Name: Quietek Corporation

Site Address: No. 75-1, Wang-Yeh Valley, Yung-Hsing,  
 Chiung-Lin, Hsin-Chu County,  
 Taiwan, R.O.C.  
 TEL : 886-3-592-8858 / FAX : 886-3-592-8859  
 E-Mail: [service@quietek.com](mailto:service@quietek.com)

## 2. Conducted Emission

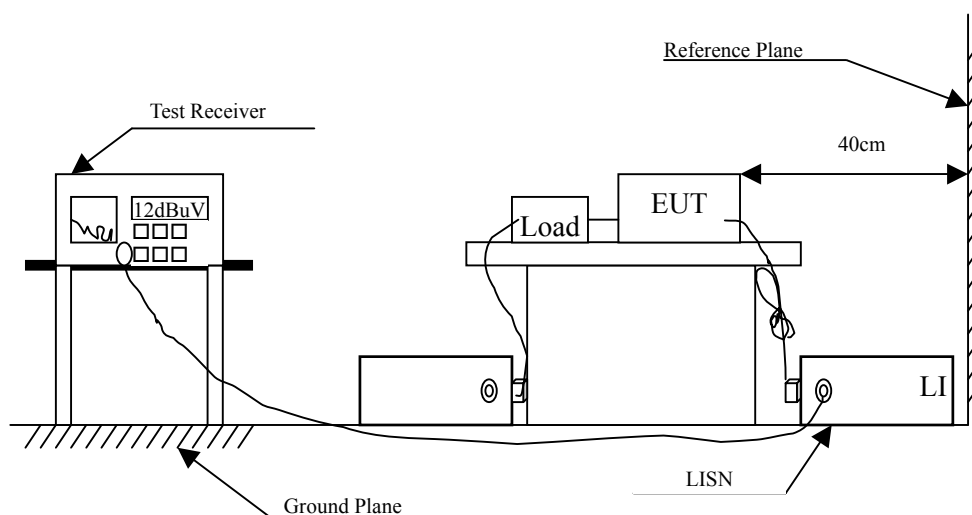
### 2.1. Test Equipment

The following test equipment are used during the conducted emission test:

Item	Instrument	Manufacturer	Type No./Serial No	Last Cal.	Remark
1	Test Receiver	R & S	ESCS 30/825442/17	May, 2002	
2	L.I.S.N.	R & S	ESH3-Z5/825016/6	May, 2002	EUT
3	L.I.S.N.	Kyoritsu	KNW-407/8-1420-3	May, 2002	Peripherals
4	Pulse Limiter	R & S	ESH3-Z2	N/A	
5	No.2 Shielded Room			N/A	

Note: All equipment upon which need to calibrated are with calibration period of 1 year.

### 2.2. Test Setup



### 2.3. Limits

FCC Part 15 Subpart C Paragraph 15.207 (dBuV) Limit		
Frequency MHz	Limits	
	QP	AV
0.15 - 0.50	66-56	56-46
0.50-5.0	56	46
5.0 - 30	60	50

Remarks : In the above table, the tighter limit applies at the band edges.

## 2.4. Test Procedure

The EUT and simulators are connected to the main power through a line impedance stabilization network (L.I.S.N.). This provides a 50 ohm /50uH coupling impedance for the measuring equipment. The peripheral devices are also connected to the main power through a LISN that provides a 50ohm/50uH coupling impedance with 50ohm termination. (Please refers to the block diagram of the test setup and photographs.)

Both sides of A.C. line are checked for maximum conducted interference. In order to find the maximum emission, the relative positions of equipment and all of the interface cables must be changed according to ANSI C63.4:1992 on conducted measurement.

Conducted emissions were invested over the frequency range from 0.15MHz to 30MHz using a receiver bandwidth of 9kHz.

## 2.5. Test Result of Conducted Emission

Product : Wireless Colour Video and Audio Baby Monitor  
 Test Item : Conducted Emission Test  
 Power Line : Line 1  
 Test Mode : Normal Operation

Frequency	Cable	LISN	Reading	Emission	Limits
	Loss	Factor	Level	Level	
MHz	dB	dB	dBuV	dBuV	dBuV
<b>Quasi-Peak</b>					
0.158	-0.01	0.10	37.50	37.59	65.57
0.189	0.05	0.12	36.90	37.07	64.08
0.251	0.01	0.15	35.40	35.55	61.72
* 0.298	0.00	0.17	34.50	34.67	60.30
0.376	0.02	0.19	31.00	31.21	58.37
0.693	0.01	0.25	21.30	21.56	56.00
<b>Average</b>					
0.158	-0.01	0.10	13.30	13.39	55.57
0.189	0.05	0.12	11.80	11.97	54.08
0.251	0.01	0.15	9.80	9.95	51.72
0.298	0.00	0.17	5.80	5.97	50.30
0.376	0.02	0.19	4.70	4.91	48.37
0.693	0.01	0.25	0.50	0.76	46.00

Note:

1. All Reading Levels are Quasi-Peak and Average value.
2. “ \* ”, means this data is the worst emission level.
3. Emission Level = Reading Level + LISN Factor + Cable Loss.

Product : Wireless Colour Video and Audio Baby Monitor  
 Test Item : Conducted Emission  
 Power Line : Line 2  
 Test Mode : Normal Operation

Frequency	Cable	Probe	Reading	Emission	Limits
	Loss	Factor	Level	Level	
MHz	dB	dB	dBuV	dBuV	dBuV
<b>Quasi-Peak</b>					
0.158	-0.01	0.10	36.70	36.79	65.57
0.188	0.05	0.12	35.40	35.57	64.12
* 0.251	0.01	0.15	33.60	33.75	61.72
0.376	0.02	0.19	25.90	26.11	58.37
0.490	0.03	0.21	24.20	24.44	56.17
1.240	0.04	0.30	18.90	19.24	56.00
<b>Average</b>					
0.158	-0.01	0.10	13.10	13.19	55.57
0.188	0.05	0.12	11.30	11.47	54.12
0.251	0.01	0.15	9.30	9.45	51.72
0.376	0.02	0.19	3.10	3.31	48.37
0.490	0.03	0.21	6.10	6.34	46.17
1.240	0.04	0.30	0.30	0.64	46.00

Note:

1. All Reading Levels are Quasi-Peak and Average value.
2. “ \* ”, means this data is the worst emission level.
3. Emission Level = Reading Level + LISN Factor + Cable Loss.

### 3. Radiated Emission

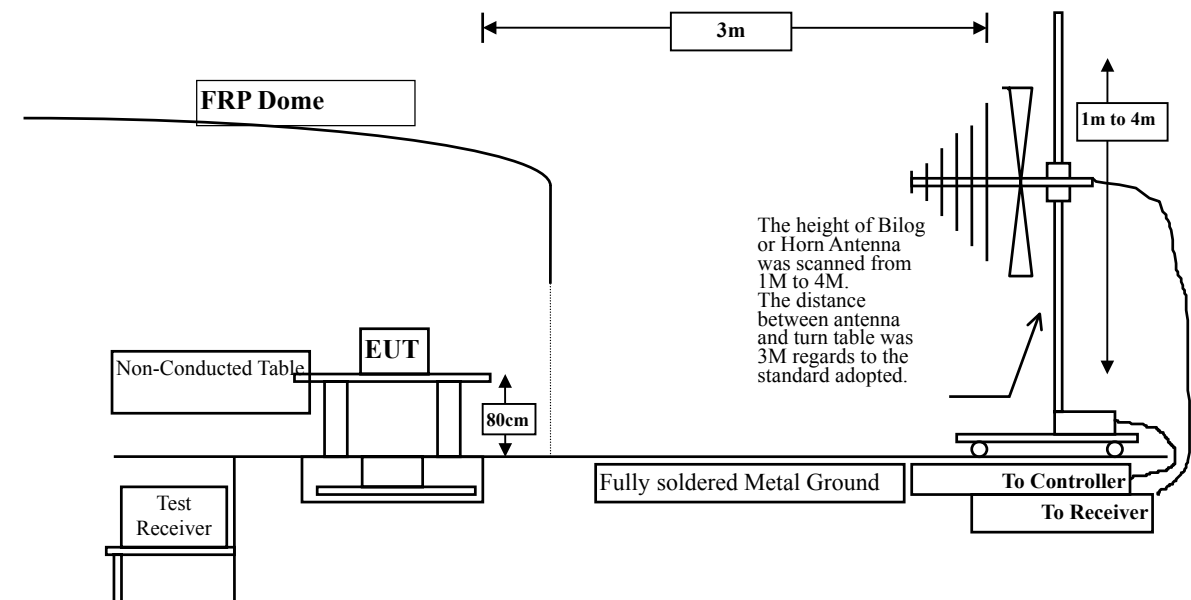
#### 3.1. Test Equipment

The following test equipment are used during the radiated emission test:

Test Site		Equipment	Manufacturer	Model No./Serial No.	Last Cal.
Site # 1	X	Test Receiver	R & S	ESCS 30 / 825442/14	May, 2002
	X	Spectrum Analyzer	Advantest	R3261C / 71720140	May, 2002
	X	Pre-Amplifier	HP	8447D/3307A01812	May, 2002
	X	Bilog Antenna	Chase	CBL6112B / 12452	Sep., 2002
	X	Horn Antenna	EM	EM6917 / 103325	May, 2002
Site # 2		Test Receiver	R & S	ESCS 30 / 825442/17	May, 2002
		Spectrum Analyzer	Advantest	R3261C / 71720609	May, 2002
		Pre-Amplifier	HP	8447D/3307A01814	May, 2002
		Bilog Antenna	Chase	CBL6112B / 2455	Sep., 2002
		Horn Antenna	EM	EM6917 / 103325	May, 2002

- Note:
1. All equipments that need to calibrate are with calibration period of 1 year.
  2. Mark "X" test instruments are used to measure the final test results.

#### 3.2. Test Setup



### 3.3. Limits

#### ➤ Fundamental and Harmonics Emission Limits

FCC Part 15 Subpart B Paragraph 15.249(a) Limits						
Frequency	Field Strength of Fundamental			Field Strength of Harmonics		
MHz	(mV/m @3m)	(dBuV/m @3m)		(uV/m @3m)	(dBuV/m @3m)	
902-928	50	94 (Average)	114 (Peak)	500	54 (Average)	74 (Peak)
2400-2483.5	50	94 (Average)	114 (Peak)	500	54 (Average)	74 (Peak)
5725-5875	50	94 (Average)	114 (Peak)	500	54 (Average)	74 (Peak)

#### ➤ General Radiated Emission Limits

Emissions radiated outside of the specified frequency bands, except for harmonics, shall be attenuated by at least 50dB below the level of the fundamental or to the general radiated emission limits in paragraph 15.209, whichever is the lesser attenuation.

FCC Part 15 Subpart B Paragraph 15.209(a) Limits		
Frequency MHz	uV/m @3m	dBuV/m@3m
30-88	100	40
88-216	150	43.5
216-960	200	46
Above 960	500	54

Remarks :

1. RF Voltage (dBuV/m) = 20 log RF Voltage (uV/m)
2. In the Above Table, the tighter limit applies at the band edges.
3. Distance refers to the distance in meters between the measuring instrument antenna and the closed point of any part of the device or system.

### 3.4. Test Procedure

The EUT and its simulators are placed on a turn table which is 0.8 meter above ground. The turn table can rotate 360 degrees to determine the position of the maximum emission level.

The EUT was positioned such that the distance from antenna to the EUT was 3 meters.

The antenna can move up and down between 1 meter and 4 meters to find out the maximum emission level.

Both horizontal and vertical polarization of the antenna are set on measurement. In order to find the maximum emission, all of the interface cables must be manipulated according to ANSI C63.4:1992 on radiated measurement.

Radiated emissions were investigated over the frequency range from 30MHz to 1GHz using a receiver bandwidth of 120kHz. Radiated was performed at an antenna to EUT distance of 3 meters.

The frequency range from 30MHz to 10th harmonics is checked.

### 3.5. Test Result of Radiated Emission

Product : Wireless Colour Video and Audio Baby Monitor  
 Test Item : Fundamental Radiated Emission Data  
 Test Site : No.1 OATS  
 Test Mode : Normal Operation

Freq.	Cable	Probe	PreAMP	Reading	Emission	Margin	Limit
	Loss	Factor		Level	Level		
MHz	dB	dB/m	dB	dBuV	dBuV/m	dB	dBuV/m

#### Peak Detector (Horizontal)

##### Channel 1

2434.125	2.46	29.46	34.95	67.44	64.41	49.59	114.00
----------	------	-------	-------	-------	-------	-------	--------

##### Channel 2

2451.922	2.47	29.52	34.95	67.88	64.92	49.08	114.00
----------	------	-------	-------	-------	-------	-------	--------

##### Channel 3

2472.077	2.49	29.56	34.95	68.06	65.16	48.84	114.00
----------	------	-------	-------	-------	-------	-------	--------

#### Peak Detector (Vertical)

##### Channel 1

2432.471	2.46	29.46	34.95	67.17	64.14	49.86	114.00
----------	------	-------	-------	-------	-------	-------	--------

##### Channel 2

2453.025	2.47	29.52	34.95	68.65	65.69	48.31	114.00
----------	------	-------	-------	-------	-------	-------	--------

##### Channel 3

2471.726	2.49	29.56	34.95	68.64	65.74	48.26	114.00
----------	------	-------	-------	-------	-------	-------	--------

#### Note:

1. All Readings below 1GHz are Quasi-Peak, above are performed with peak and/or average measurements as necessary.
2. Emission Level = Reading Level + Probe Factor + Cable Loss – PreAMP.
3. The average measurement was not performed when the peak measured data under the limit of average detection. If the readings given are average, peak measurement should also be supplied.

Product : Wireless Colour Video and Audio Baby Monitor  
 Test Item : Harmonic Radiated Emission Data  
 Test Site : No.1 OATS  
 Test Mode : Channel 1

Freq.	Cable	Probe	PreAMP	Reading	Emission	Margin	Limit
	Loss	Factor		Level	Level		
MHz	dB	dB/m	dB	dBuV	dBuV/m	dB	dBuV/m

### Horizontal

#### Peak Detector:

4866.369	3.78	33.56	34.69	50.81	53.46	20.54	74.00
7298.089	4.89	36.29	34.99	43.18	< 49.37	24.63	74.00
9731.211	5.67	37.45	35.10	44.40	< 52.41	21.59	74.00

### Vertical

#### Peak Detector:

4867.021	3.78	33.56	34.69	50.23	52.88	21.12	74.00
7298.840	4.89	36.29	34.99	43.56	< 49.75	24.25	74.00
9730.860	5.67	37.45	35.10	44.38	< 52.39	21.61	74.00

#### Note:

1. All Readings below 1GHz are Quasi-Peak, above are performed with peak and/or average measurements as necessary.
2. Receiver setting (Peak Detector) : RBW:1MHz; VBW:1MHz; Span:100MHz °
3. Receiver setting (AVG Detector) : RBW:1MHz; VBW:30Hz; Span:20MHz °
4. Emission Level = Reading Level + Probe Factor + Cable Loss – PreAMP.
5. The average measurement was not performed when the peak measured data under the limit of average detection. If the readings given are average, peak measurement should also be supplied.

Product : Wireless Colour Video and Audio Baby Monitor  
 Test Item : Harmonic Radiated Emission Data  
 Test Site : No.1 OATS  
 Test Mode : Channel 2

Freq.	Cable	Probe	PreAMP	Reading	Emission	Margin	Limit
	Loss	Factor		Level	Level		
MHz	dB	dB/m	dB	dBuV	dBuV/m	dB	dBuV/m

### Horizontal

#### Peak Detector:

4905.724	3.80	33.59	34.69	49.54	52.23	21.77	74.00
7358.724	4.90	36.36	35.01	41.99	< 48.24	25.76	74.00
9811.724	5.70	37.46	35.10	44.23	< 52.28	21.72	74.00

### Vertical

#### Peak Detector:

4905.473	3.80	33.59	34.69	50.39	53.08	20.92	74.00
7358.774	4.90	36.36	35.01	42.58	< 48.83	25.17	74.00
9811.874	5.70	37.46	35.10	43.65	< 51.70	22.30	74.00

#### Note:

1. All Readings below 1GHz are Quasi-Peak, above are performed with peak and/or average measurements as necessary.
2. Receiver setting (Peak Detector) : RBW:1MHz; VBW:1MHz; Span:100MHz °
3. Receiver setting (AVG Detector) : RBW:1MHz; VBW:30Hz; Span:20MHz °
4. Emission Level = Reading Level + Probe Factor + Cable Loss – PreAMP.
5. The average measurement was not performed when the peak measured data under the limit of average detection. If the readings given are average, peak measurement should also be supplied.

Product : Wireless Colour Video and Audio Baby Monitor  
 Test Item : Harmonic Radiated Emission Data  
 Test Site : No.1 OATS  
 Test Mode : Channel 3

Freq.	Cable	Probe	PreAMP	Reading	Emission	Margin	Limit
	Loss	Factor		Level	Level		
MHz	dB	dB/m	dB	dBuV	dBuV/m	dB	dBuV/m

### Horizontal

#### Peak Detector:

4944.672	3.81	33.64	34.70	50.67	53.42	20.58	74.00
7418.724	4.91	36.41	35.02	43.28	< 49.57	24.43	74.00
9891.874	5.73	37.48	35.10	44.60	< 52.70	21.30	74.00

### Vertical

#### Peak Detector:

4945.273	3.81	33.64	34.70	50.29	53.04	20.96	74.00
7418.624	4.91	36.41	35.02	43.36	< 49.65	24.35	74.00
9891.524	5.73	37.48	35.10	43.74	< 51.84	22.16	74.00

#### Note:

1. All Readings below 1GHz are Quasi-Peak, above are performed with peak and/or average measurements as necessary.
2. Receiver setting (Peak Detector) : RBW:1MHz; VBW:1MHz; Span:100MHz °
3. Receiver setting (AVG Detector) : RBW:1MHz; VBW:30Hz; Span:20MHz °
4. Emission Level = Reading Level + Probe Factor + Cable Loss – PreAMP.
5. The average measurement was not performed when the peak measured data under the limit of average detection. If the readings given are average, peak measurement should also be supplied.

Product : Wireless Colour Video and Audio Baby Monitor  
 Test Item : General Radiated Emission Data  
 Test Site : No.1 OATS  
 Test Mode : Channel 1

Freq.	Cable	Probe	PreAMP	Reading	Emission	Margin	Limit
	Loss	Factor		Level	Level		
MHz	dB	dB/m	dB	dBuV	dBuV/m	dB	dBuV/m

#### Horizontal:

62.810	1.47	6.31	0.00	6.56	14.34	25.66	40.00
*83.253	1.66	10.43	0.00	11.60	23.70	16.30	40.00
113.747	1.95	12.39	0.00	0.40	14.74	28.76	43.50
169.240	2.49	10.58	0.00	2.81	15.88	27.62	43.50
197.747	2.77	10.00	0.00	1.93	14.69	28.81	43.50
381.900	4.17	16.38	0.00	-3.21	17.34	28.66	46.00

#### Vertical:

53.200	1.37	7.54	0.00	10.31	19.22	20.78	40.00
71.180	1.54	8.74	0.00	10.68	20.96	19.04	40.00
199.240	2.78	9.68	0.00	7.49	19.95	23.55	43.50
244.125	3.21	12.93	0.00	0.19	16.33	29.67	46.00
*675.250	5.71	19.43	0.00	2.37	27.51	18.49	46.00
987.150	7.33	21.99	0.00	-1.28	28.04	25.96	54.00

#### Note:

1. All Readings below 1GHz are Quasi-Peak, above are performed with peak and/or average measurements as necessary.
2. “ \* ”, means this data is the worst emission level.
3. Emission Level = Reading Level + Probe Factor + Cable Loss.

Product : Wireless Colour Video and Audio Baby Monitor  
 Test Item : General Radiated Emission Data  
 Test Site : No.1 OATS  
 Test Mode : Channel 2

Freq.	Cable	Probe	PreAMP	Reading	Emission	Margin	Limit
	Loss	Factor		Level	Level		
MHz	dB	dB/m	dB	dBuV	dBuV/m	dB	dBuV/m

#### Horizontal:

83.253	1.66	10.43	0.00	6.65	18.75	21.25	40.00
113.747	1.95	12.39	0.00	1.26	15.60	27.90	43.50
182.345	2.62	9.52	0.00	2.56	14.70	28.80	43.50
266.340	3.43	13.15	0.00	3.51	20.09	25.91	46.00
364.312	4.09	16.12	0.00	2.37	22.57	23.43	46.00
*634.800	5.49	19.38	0.00	1.03	25.90	20.10	46.00

#### Vertical:

53.200	1.37	7.54	0.00	1.98	10.89	29.11	40.00
*71.250	1.55	9.13	0.00	11.34	22.02	17.98	40.00
144.310	2.25	10.80	0.00	3.50	16.55	26.95	43.50
206.003	2.84	9.71	0.00	5.30	17.85	25.65	43.50
371.003	4.12	15.57	0.00	3.15	22.84	23.16	46.00
429.003	4.43	16.68	0.00	2.04	23.15	22.85	46.00

#### Note:

1. All Readings below 1GHz are Quasi-Peak, above are performed with peak and/or average measurements as necessary.
2. “ \* ”, means this data is the worst emission level.
3. Emission Level = Reading Level + Probe Factor + Cable Loss.

Product : Wireless Colour Video and Audio Baby Monitor  
Test Item : General Radiated Emission Data  
Test Site : No.1 OATS  
Test Mode : Channel 3

Freq.	Cable	Probe	PreAMP	Reading	Emission	Margin	Limit
	Loss	Factor		Level	Level		
MHz	dB	dB/m	dB	dBuV	dBuV/m	dB	dBuV/m

#### Horizontal:

53.450	1.37	6.17	0.00	6.89	14.43	25.57	40.00
*83.259	1.66	10.43	0.00	10.04	22.14	17.86	40.00
113.745	1.95	12.39	0.00	1.20	15.54	27.96	43.50
177.450	2.57	10.01	0.00	2.56	15.14	28.36	43.50
248.420	3.25	12.85	0.00	4.01	20.11	25.89	46.00
305.220	3.78	13.68	0.00	0.78	18.24	27.76	46.00

#### Vertical:

32.010	1.17	15.52	0.00	2.00	18.69	21.31	40.00
*53.200	1.37	7.54	0.00	11.03	19.94	20.06	40.00
144.310	2.25	10.80	0.00	5.10	18.15	25.35	43.50
256.290	3.34	13.45	0.00	4.10	20.89	25.11	46.00
319.150	3.85	14.16	0.00	5.00	23.02	22.98	46.00
450.000	4.53	16.58	0.00	1.69	22.80	23.20	46.00

#### Note:

1. All Readings below 1GHz are Quasi-Peak, above are performed with peak and/or average measurements as necessary.
2. “ \* ”, means this data is the worst emission level.
3. Emission Level = Reading Level + Probe Factor + Cable Loss.

## 4. Band Edge

### 4.1. Test Equipment

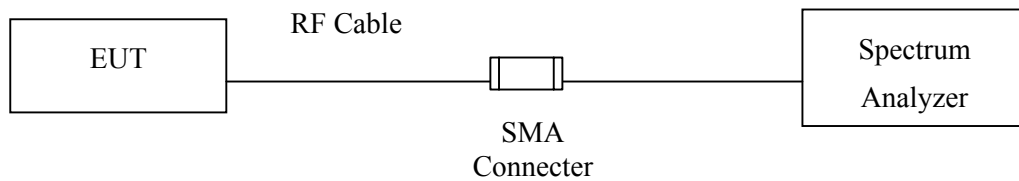
The following test equipments are used during the band edge tests:

Equipment	Manufacturer	Model No./Serial No.	Last Cal.
X Spectrum Analyzer	Advantest	R3272 / 72421194	May, 2002
X Test Receiver	R & S	ESCS 30 / 825442/14	May, 2002
X Spectrum Analyzer	Advantest	R3261C / 71720140	May, 2002
X Pre-Amplifier	HP	8447D/3307A01812	May, 2002
X Bilog Antenna	Chase	CBL6112B / 12452	Sep., 2002
X Horn Antenna	EM	EM6917 / 103325	May, 2002

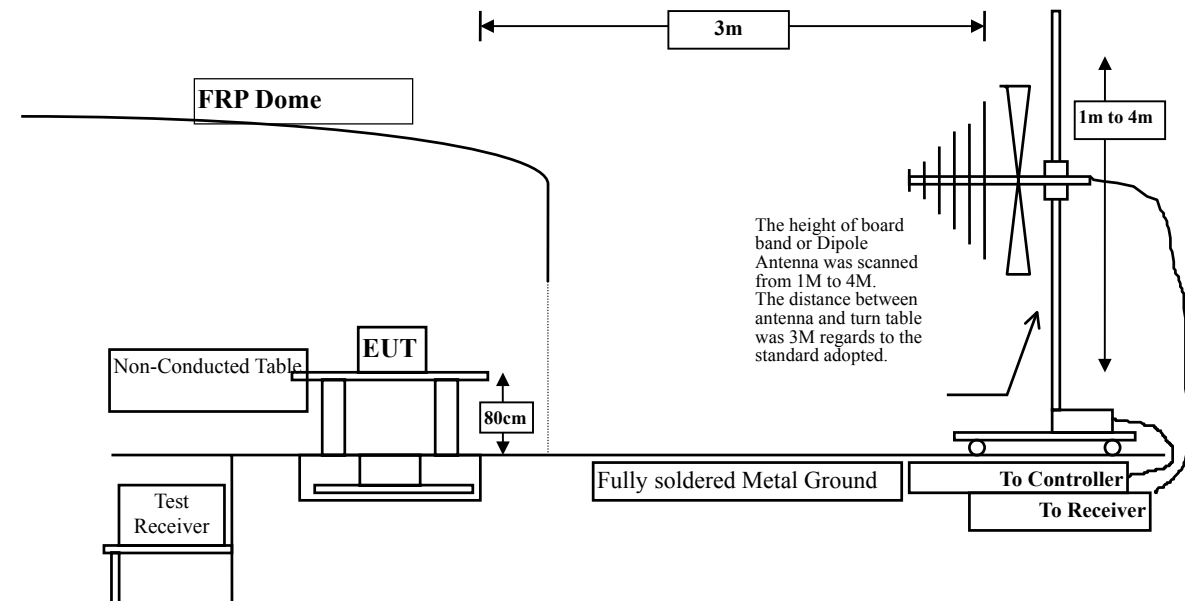
- Note: 1. All equipments that need to calibrate are with calibration period of 1 year.  
2. Mark "X" test instruments are used to measure the final test results.

### 4.2. Test Setup

#### RF Conducted Measurement:



#### RF Radiated Measurement:



#### **4.3. Test Condition**

Standard Temperature and Humidity, Standard Test Voltage

#### **4.4. Standard Requirement**

In any 100 kHz bandwidth outside the frequency band in which the spread spectrum intentional radiator is operating, the radio frequency power that is produced by the intentional radiator shall be at least 50 dB below that in the 100 kHz bandwidth within the band that contains the highest level of the desired power, based on either an RF conducted or a radiated measurement. Attenuation below the general limits specified in Section 15.209(a) is not required. In addition, radiated emissions which fall in the restricted bands, as defined in Section 15.205(a), must also comply with the radiated emission limits specified in Section 15.209(a) (see Section 15.205(c)).

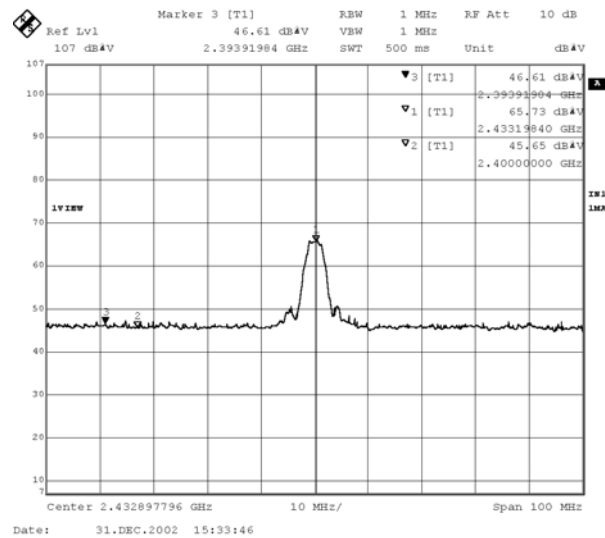
#### 4.5. Test Result of Band Edge

Product : Wireless Colour Video and Audio Baby Monitor  
 Test Item : Band Edge Data  
 Test Site : No.1 OATS  
 Test Mode : Channel 1

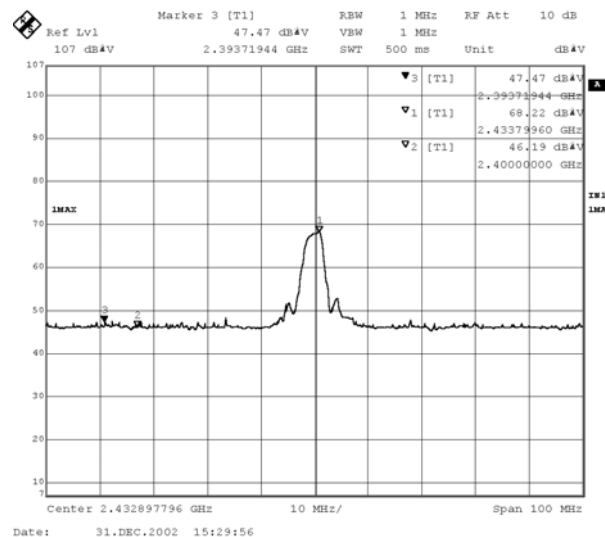
##### RF Radiated Measurement: (Peak Detector)

Channel No.	Frequency (MHz)	Reading Level (dBuV)	Probe Factor (dB/m)	Cable Loss (dB)	PreAMP (dB)	Emission Level (dBuV/m)	Limit (dBuV/m)	Result
1(Horizontal)	2393.919	46.61	29.36	2.43	34.94	43.45	74	Pass
1 (Vertical)	2393.719	47.47	29.36	2.43	34.94	44.31	74	Pass

Horizontal



Vertical



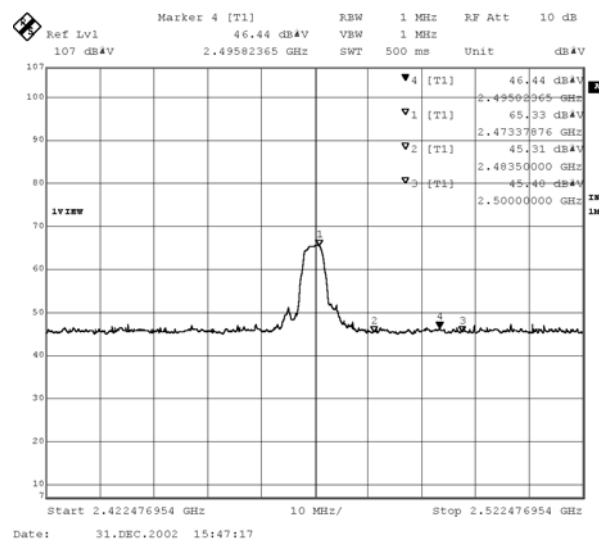
Note: The average measurement was not performed when the peak measured data under the limit of average detection. If the readings given are average, peak measurement should also be supplied.

Product : Wireless Colour Video and Audio Baby Monitor  
 Test Item : Band Edge Data  
 Test Site : No.1 OATS  
 Test Mode : Channel 3

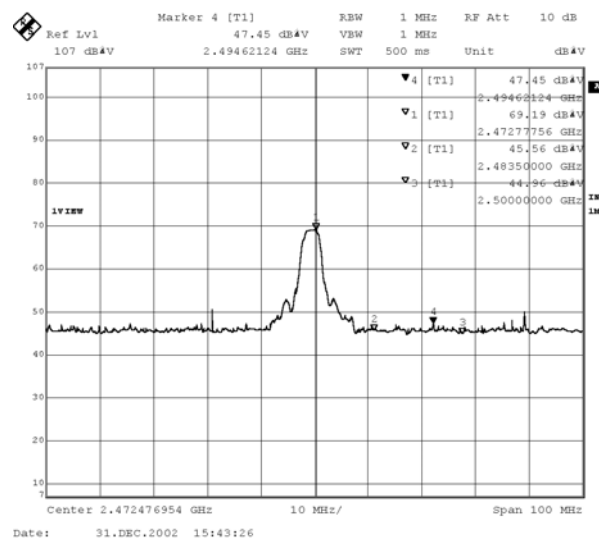
**RF Radiated Measurement: (Peak Detector)**

Channel No.	Frequency (MHz)	Reading Level (dBuV)	Probe Factor (dB/m)	Cable Loss (dB)	PreAMP (dB)	Emission Level (dBuV/m)	Limit (dBuV/m)	Result
3(Horizontal)	2495.823	46.44	29.62	2.52	29.62	43.63	74	Pass
3 (Vertical)	2494.621	47.45	29.62	2.52	34.95	44.64	74	Pass

**Horizontal**



**Vertical**



Note: The average measurement was not performed when the peak measured data under the limit of average detection. If the readings given are average, peak measurement should also be supplied.

## **5. EMI Reduction Method During Compliance Testing**

No modification was made during testing.

## Attachment 1 : EUT Test Photographs

## Attachment 1: EUT Test Setup Photographs

Front View of Conducted Test



Back View of Conducted Test



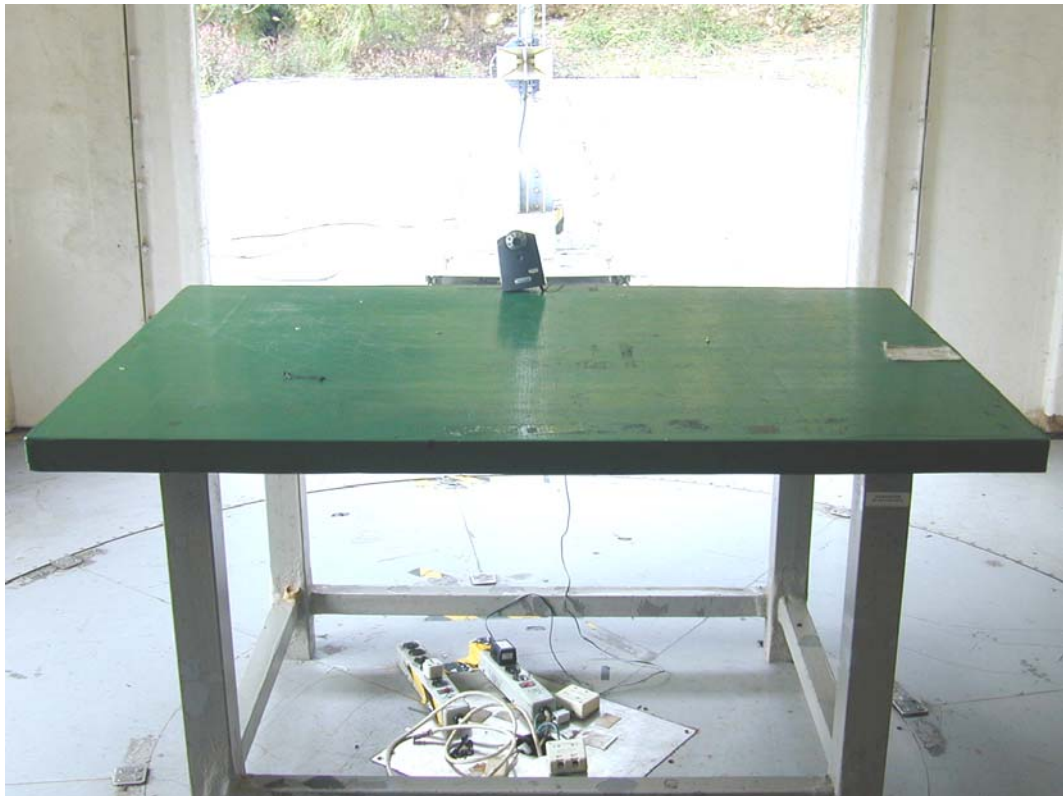
Front View of Radiated Test



Back View of Radiated Test



Front View of Radiated Test (Horn)



## Attachment 2 : EUT Detailed Photographs

## Attachment 2 : EUT Detailed Photographs

### (1) EUT Photo



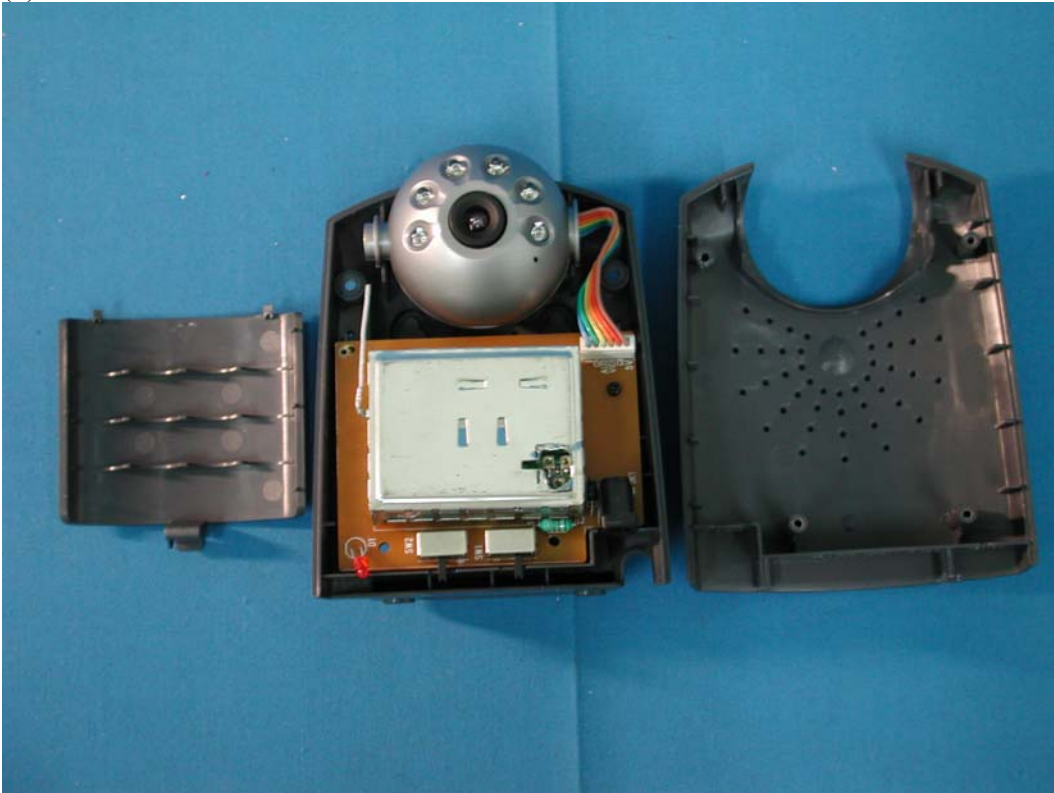
### (2) EUT Photo



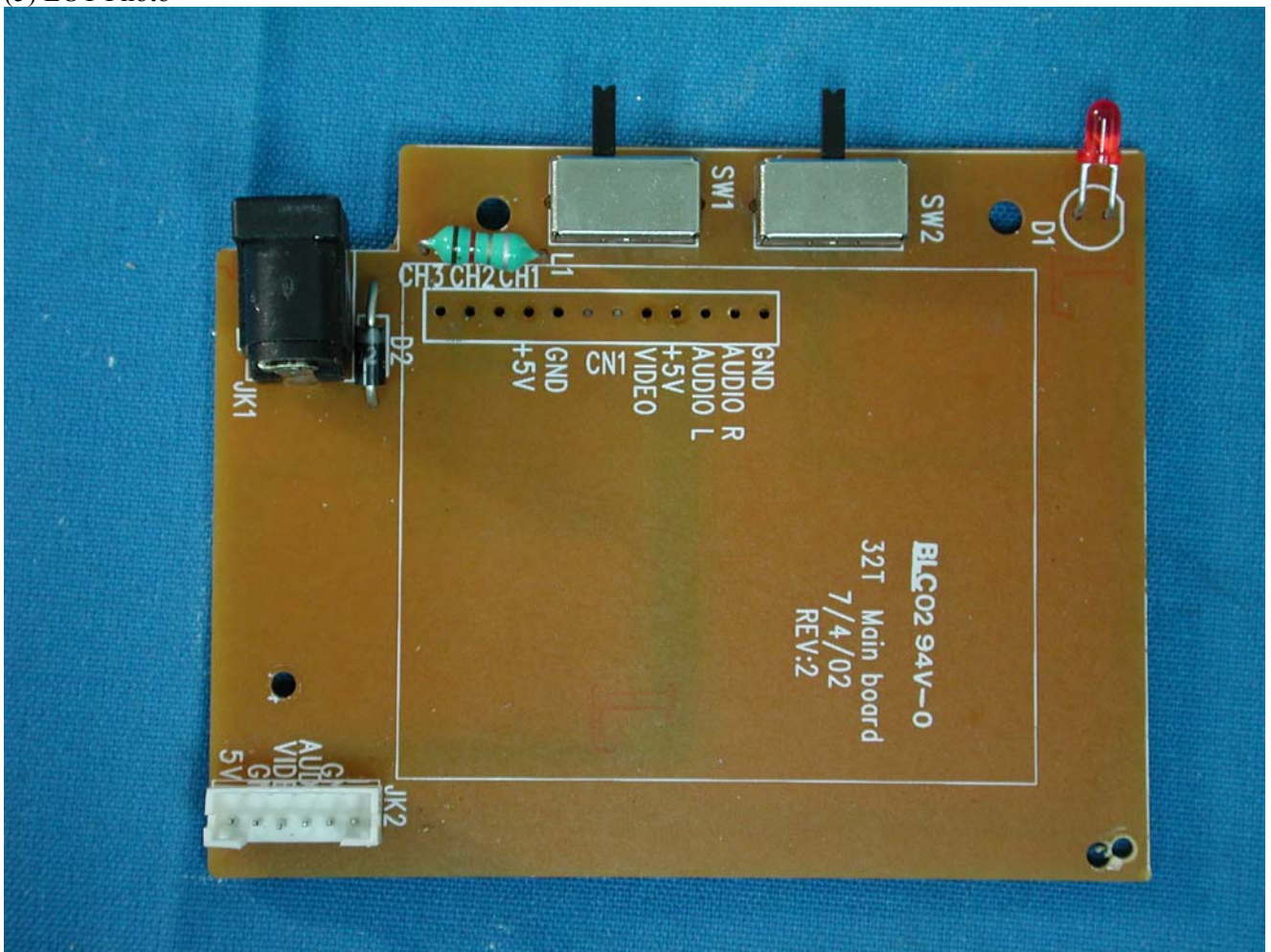
(3) EUT Photo



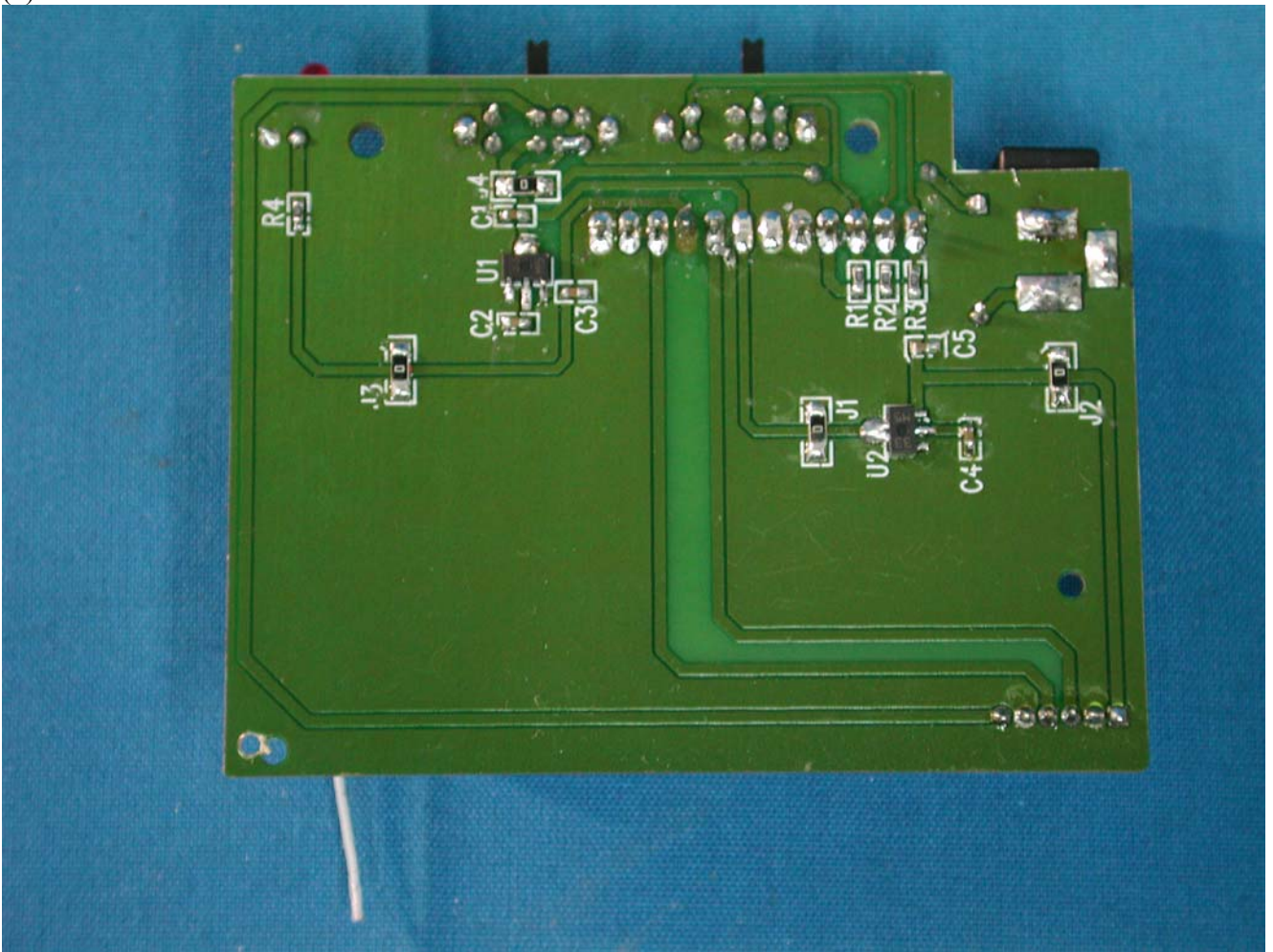
(4) EUT Photo



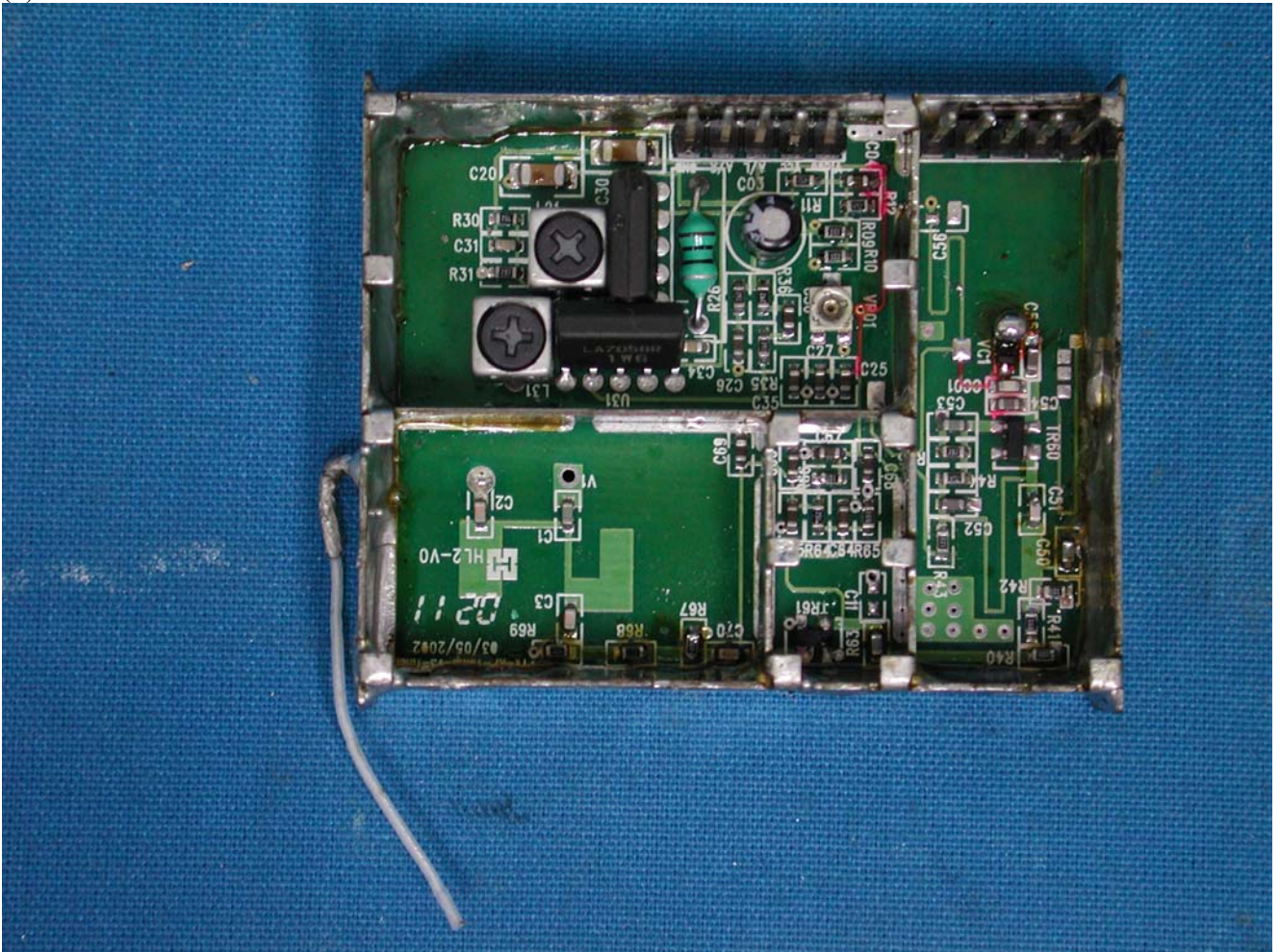
(5) EUT Photo



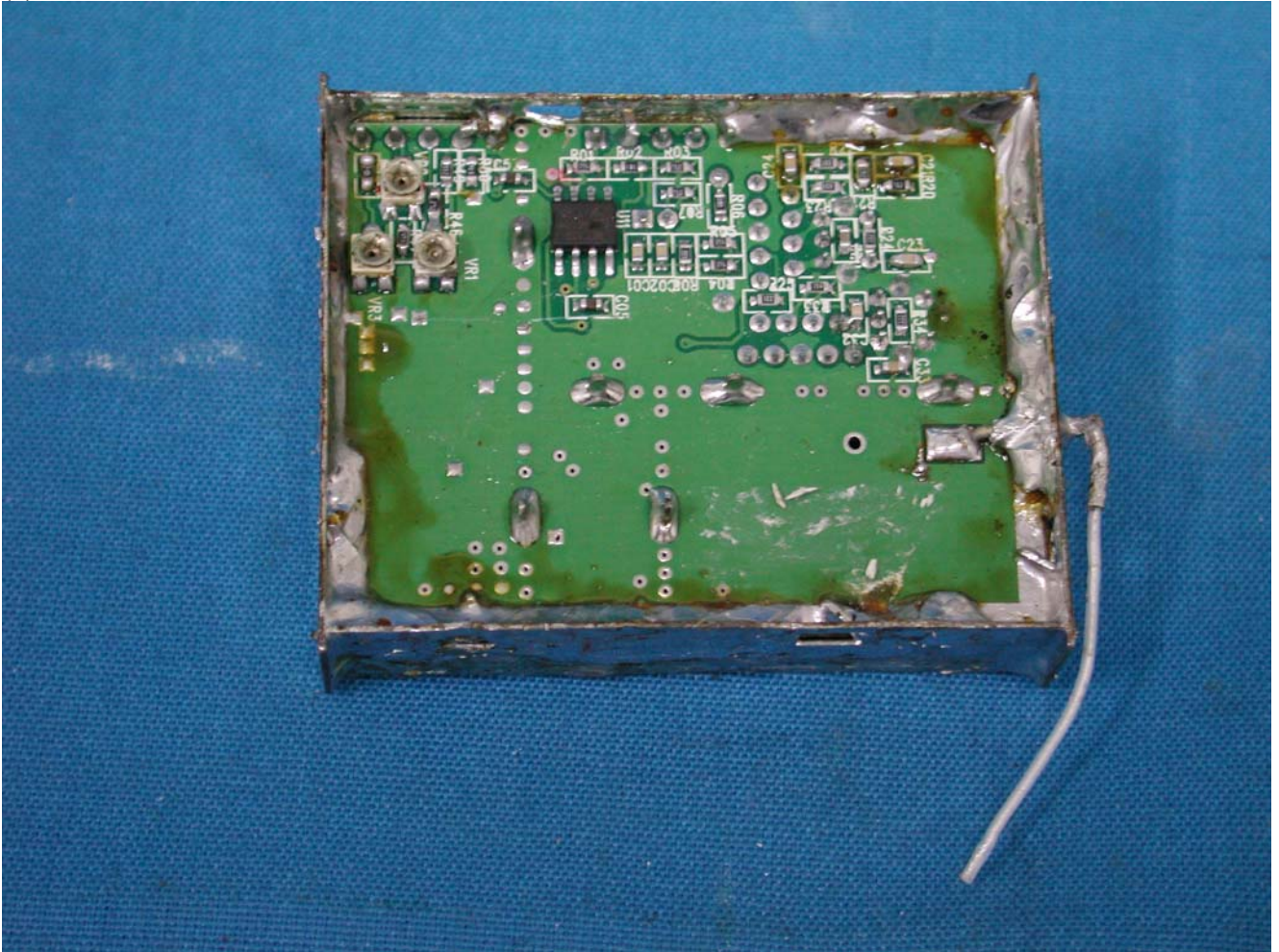
(6) EUT Photo



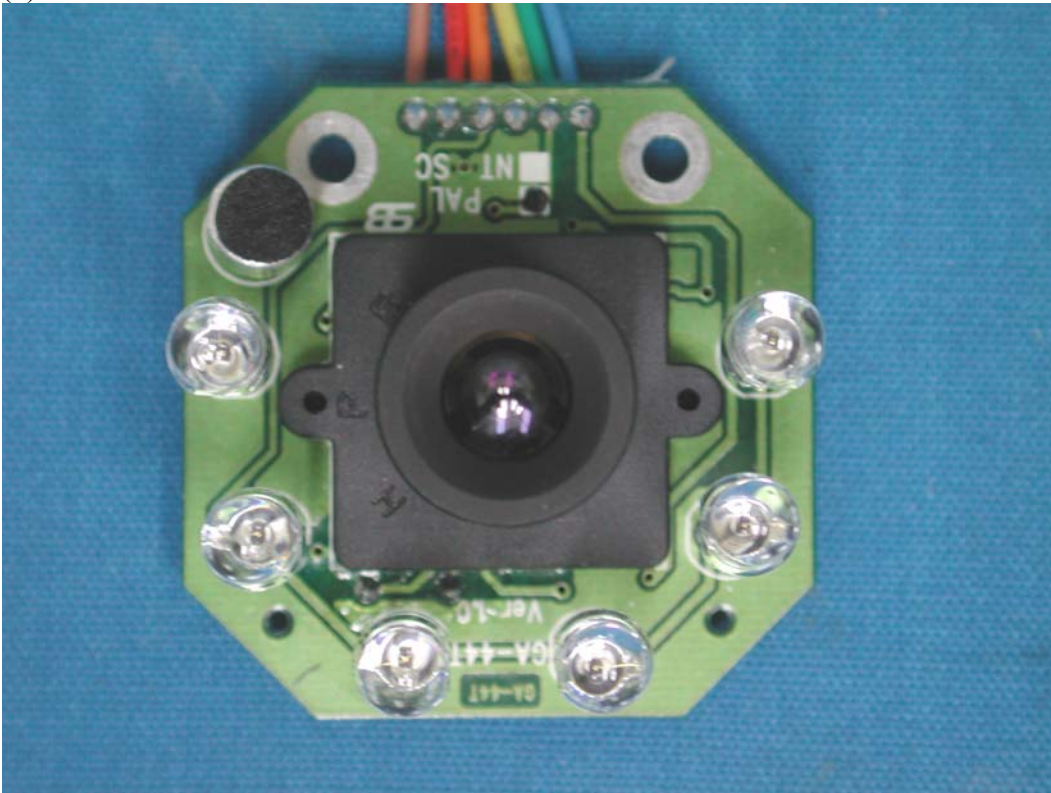
(7) EUT Photo



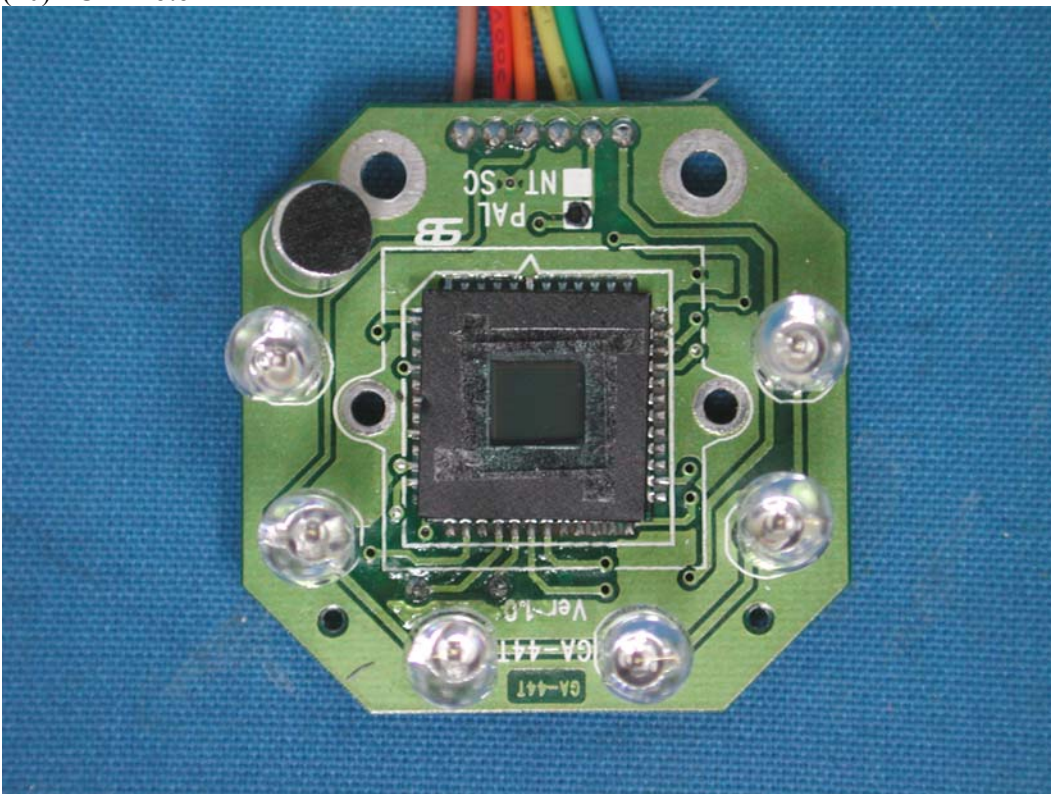
(8) EUT Photo



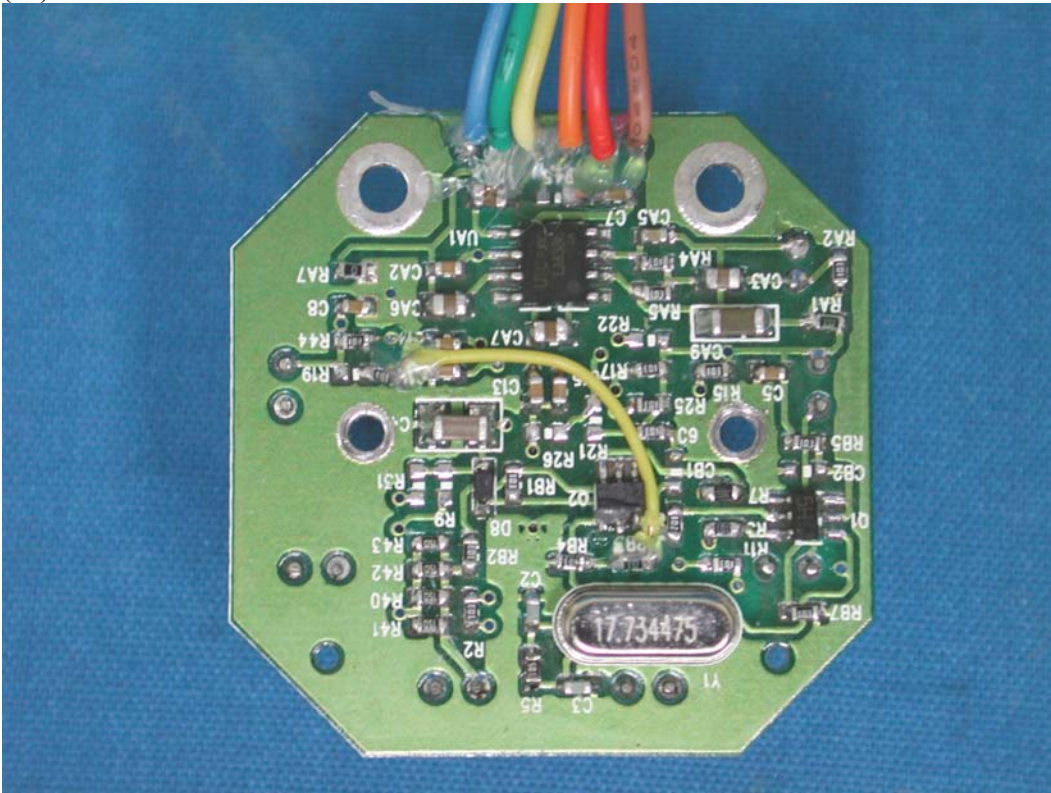
(9) EUT Photo



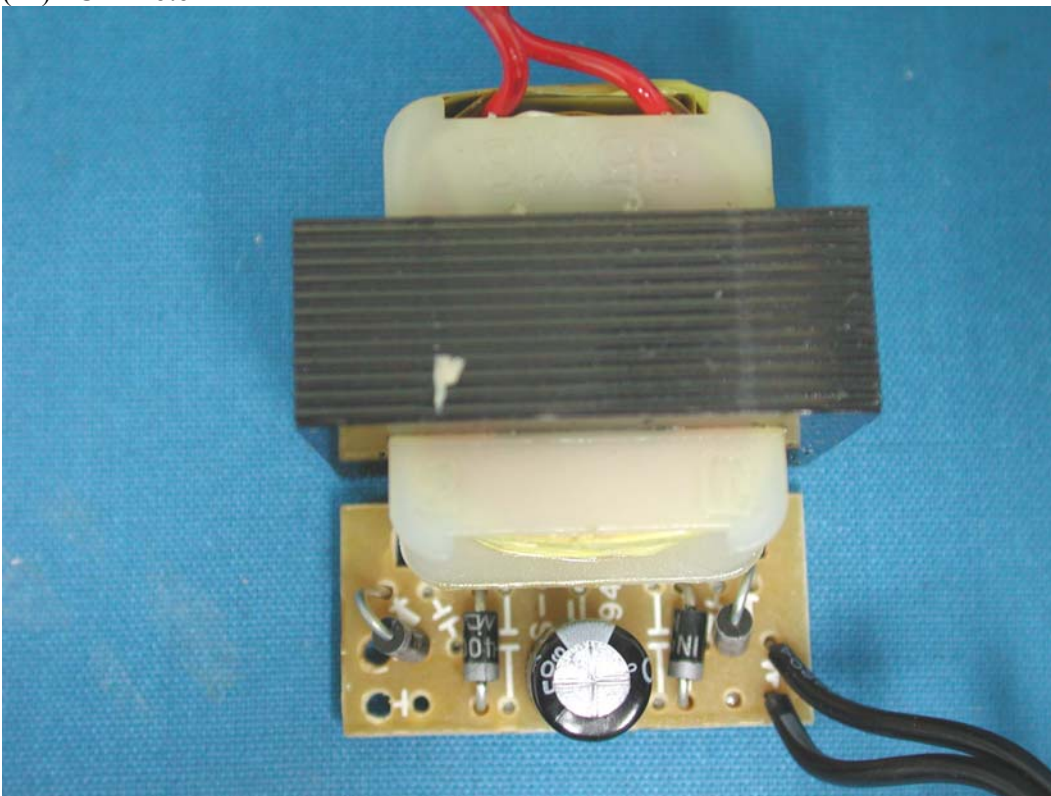
(10) EUT Photo



(11) EUT Photo



(12) EUT Photo



(13) EUT Photo

