

October 20, 2003

Mr. Peter Hauser
Zeecraft Tech
R.R #2 Box 157-H
New Milford, PA 18834

Dear Mr. Hauser:

Enclosed is the test data for the **Zeecraft Tech** Inquisitor Transmitter tested at our facility, 556 Route 222 in Groton, New York. This facility is on file with the FCC per CFR 47 2.948 (Site File Number 31040/SIT) and is NVLAP accredited.

As narrated in the report, the product configuration meets the requirements of the FCC per CFR 47 Part 15 Class C Section 15.209 for Intentional Radiators.

Thank you for selecting Diversified T.E.S.T. Technologies, Inc. for your testing needs. We look forward to working with you on future projects. Should you have any questions, or concerns regarding this report please contact me at (800) 724-6452 or (607) 898-4218.

Sincerely,

Shaun Hotaling
Technical Associate

<i>DIVERSIFIED T.E.S.T. TECHNOLOGIES, INC. FCC Part 15 Class C Section 15.209 TEST REPORT</i>	
Zeecraft Tech. Inquisitor Transmitter	Project Number: 5583

Standard Information & Product Description

STANDARD: FCC Part 15 Class C Section 15.209

CLIENT: Zeecraft Tech.
R.R. #2 Box 157-H
New Milford, PA 18834

PRODUCT: Inquisitor Transmitter

Condition: New

PRODUCT RECEIVED: September 2, 2003

TEST DATES: September 2, 2003

PREPARED BY: Diversified TEST Technologies, Inc.
556 Route 222 • PO Box 8
Groton, New York 13073
(607) 898-4218
(607) 898-4830/fax

COMPILED BY: Shaun Hotaling

Technical Associate

REVIEWED BY: Thomas P. Sims

President

<i>DIVERSIFIED T.E.S.T. TECHNOLOGIES, INC. FCC Part 15 Class C Section 15.209 TEST REPORT</i>	
Zeecraft Tech. Inquisitor Transmitter	Project Number: 5583

Modifications:

Product: Inquisitor Transmitter

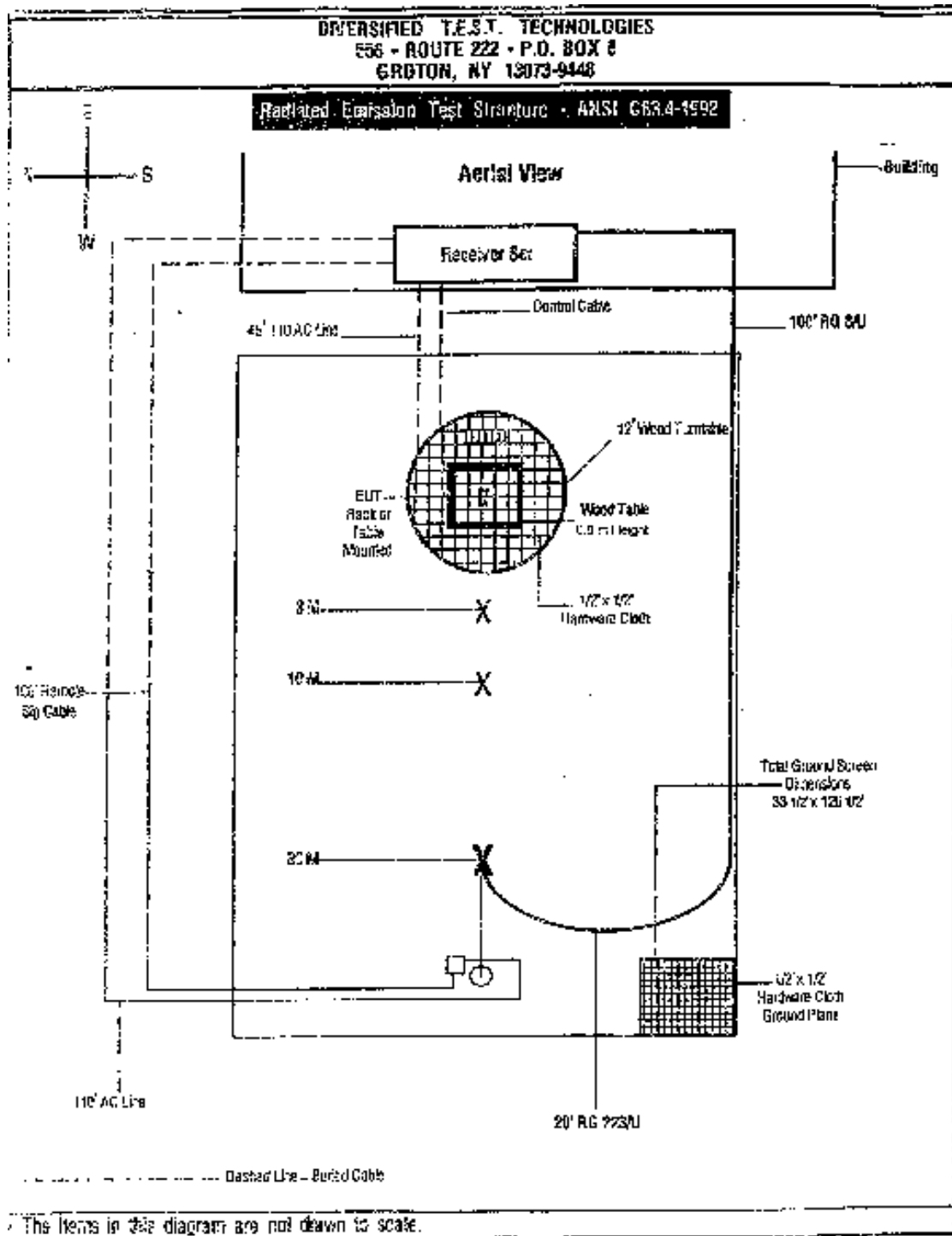
Original Configuration: Wall Transformer

Modification: Put a fair-rite head on transformer by DC main plug by the EUT DC input part #0431164281 31 material 2 ½ turns.

Fair-Rite information attached.

Project Number: 5583

Diagrams for Radiated Emissions



<i>DIVERSIFIED T.E.S.T. TECHNOLOGIES, INC. FCC Part 15 Class C Section 15.209 TEST REPORT</i>	
Zeecraft Tech. Inquisitor Transmitter	Project Number: 5583

Data Charts for Radiated Emissions

<i>DIVERSIFIED T.E.S.T. TECHNOLOGIES, INC. FCC Part 15 Class C Section 15.209 TEST REPORT</i>	
Zeecraft Tech. Inquisitor Transmitter	Project Number: 5583

*This report shall not be reproduced, except in full, without the written approval of DTT, Inc.
And must not be used to claim product endorsement by NVLAP or any agency of the U.S. Government.*

**DIVERSIFIED T.E.S.T. TECHNOLOGIES, INC. FCC Part 15 Class C Section 15.209
TEST REPORT**

Zeecraft Tech.
Inquisitor Transmitter

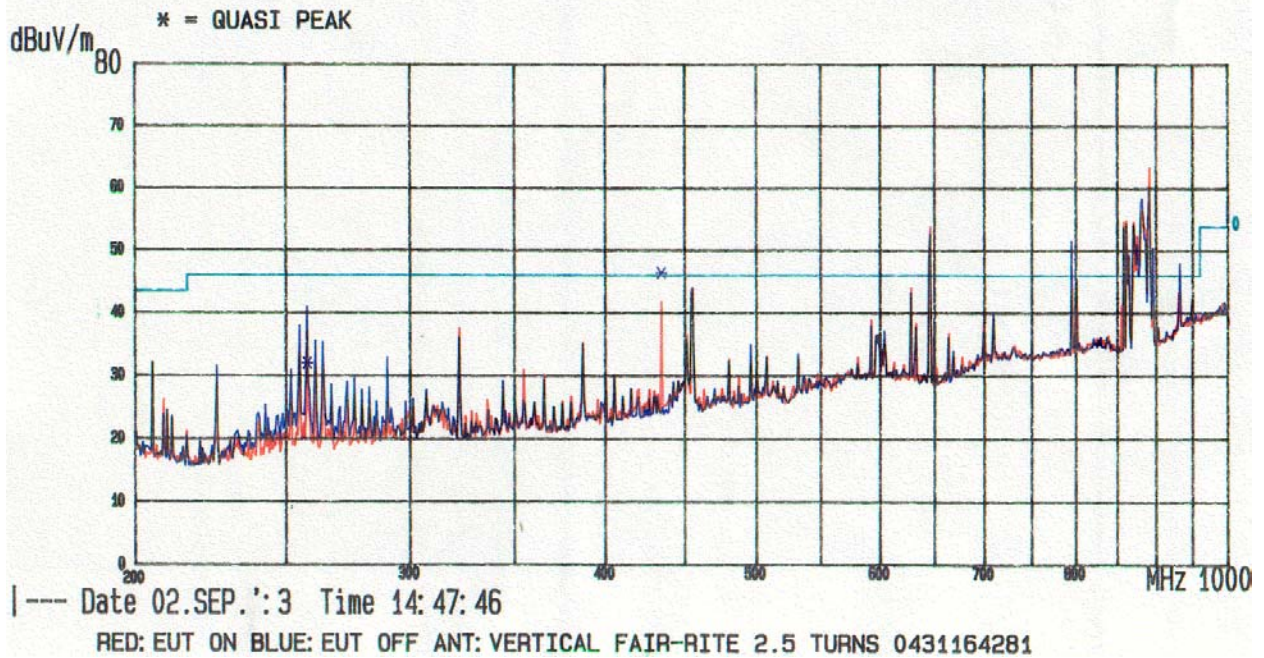
Project Number:
5583

ZEECRAFT TECH.

RFI Fieldstrength Test (General)

E.U.T.: INQUISITOR
Oper. condition: 120VAC 60Hz
Operator: S. HOTALING
Test spec:
47 CFR PART 15 CLASS B 3 METERS 200-1000MHZ ANT S/N: 1242

Start Fr. MHz	Stop Fr. MHz	IF-BW kHz	Detector	Att. dB	Meas. T. s	Transd. type
200.0000	1000.0000	120	Peak	LN	0.005	



ZEECRAFT TECH.

RFI Fieldstrength Test (General)

E.U.T.: INQUISITOR
Date: 02.SEP.'13

Frequency MHz	measured Level dBuV/m	QP Margin dB	Pol h/v	values Height m	Azimuth deg.
257.7230	32.1	-13.8	v	2.40	180
435.9520	46.5	0.5	#	1.00	180

* Limit exceeded

Fundamental
does not count

**DIVERSIFIED T.E.S.T. TECHNOLOGIES, INC. FCC Part 15 Class C Section 15.209
TEST REPORT**

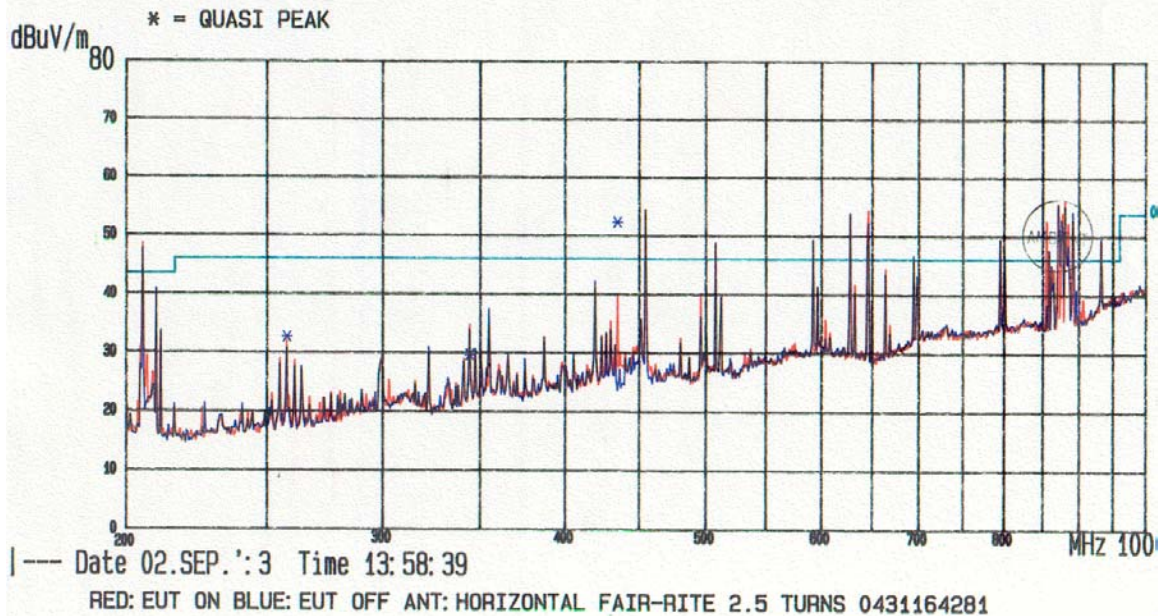
Zeecraft Tech.
Inquisitor Transmitter

Project Number:
5583

**ZEECRAFT TECH.
RFI Fieldstrength Test (General)**

E.U.T.: INQUISITOR
Oper. condition: 120VAC 60Hz
Operator: S. HOTALING
Test spec:
47 CFR PART 15 CLASS B 3 METERS 200-1000MHZ ANT 8/4 1242

Start Fr. MHz	Stop Fr. MHz	IF-BW kHz	Detect tor	Att. dB	Meas.T. s	Traced. type
200.0000	1000.0000	120	Peak	LN	0.005	



**ZEECRAFT TECH.
RFI Fieldstrength Test (General)**

E.U.T.: INQUISITOR
Date: 02.SEP.'13

Frequency MHz	Level dBuV/m	Margin dB	Pol h/v	Height m	Azimuth deg.
257.7200	32.8	-13.4		1.00	
343.6360	29.6	-15.4		1.00	
433.9520	52.3	8.3 *		1.00	

* Limit exceeded

Fundamental
Does not count

**DIVERSIFIED T.E.S.T. TECHNOLOGIES, INC. FCC Part 15 Class C Section 15.209
TEST REPORT**

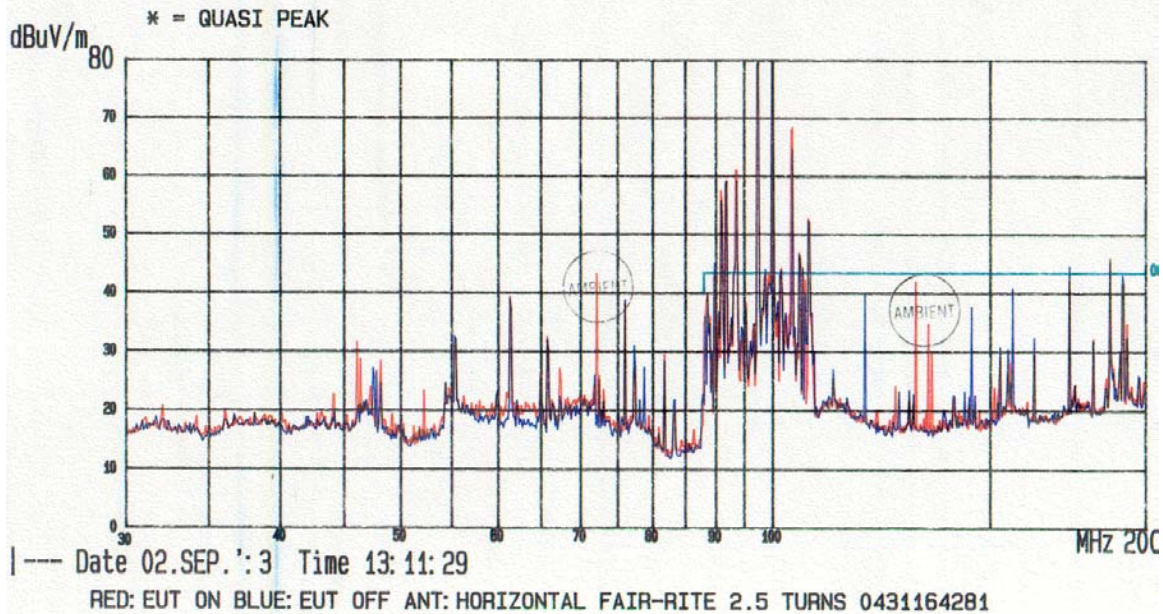
Zeecraft Tech.
Inquisitor Transmitter

Project Number:
5583

ZEECRAFT TECH.
RFI Fieldstrength Test (General)

E.U.T.: INQUISITOR
Oper. condition: 120VAC 60Hz
Operator: S. HOTALING
Test spec:
47 CFR PART 15 CLASS B 3 METERS 30-200 MHz ANT S/N: 001

Start Fr. MHz	Stop Fr. MHz	IF-BW kHz	Detect tor	Att. dB	Meas.T. s	Transd. type
30.0000	199.9999	120	Peak	LN	0.020	



*This report shall not be reproduced, except in full, without the written approval of DTT, Inc.
And must not be used to claim product endorsement by NVLAP or any agency of the U.S. Government.*

**DIVERSIFIED T.E.S.T. TECHNOLOGIES, INC. FCC Part 15 Class C Section 15.209
TEST REPORT**

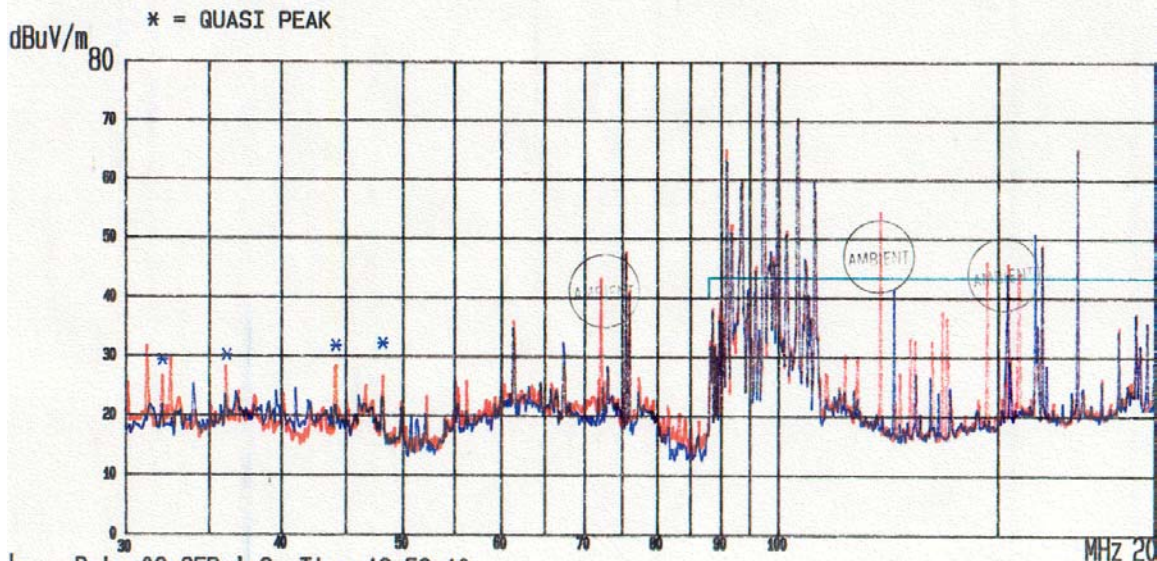
Zeecraft Tech.
Inquisitor Transmitter

Project Number:
5583

**ZEECRAFT TECH.
RFI Fieldstrength Test (General)**

E.U.T.: INQUISITOR
Oper. condition: 120VAC 60Hz
Operator: S. HOTALING
Test spec:
47 CFR PART 15 CLASS B 3 METERS 30-200 MHz ANT S/N: 001

Start Fr. MHz	Stop Fr. MHz	IF-BW kHz	Detect tor	Att. dB	Meas. T. a	Tuned. type
30.0000	199.9999	120	Peak	LN	0.020	



RED: EUT ON BLUE: EUT OFF ANT: VERTICAL FAIR-RITE 2.5 TURNS 0431164281

**ZEECRAFT TECH.
RFI Fieldstrength Test (General)**

E.U.T.: INQUISITOR
Date: 02.SEP.'13

Frequency MHz	Level dBuV/m	Margin dB	Pol h/v	Height m	Azimuth deg.
32.1000	29.4	-10.6	v	1.00	0
36.1240	30.2	-9.8	v	1.00	0
44.1470	31.9	-8.1	v	1.00	0
48.1640	32.2	-7.8	v	1.00	0

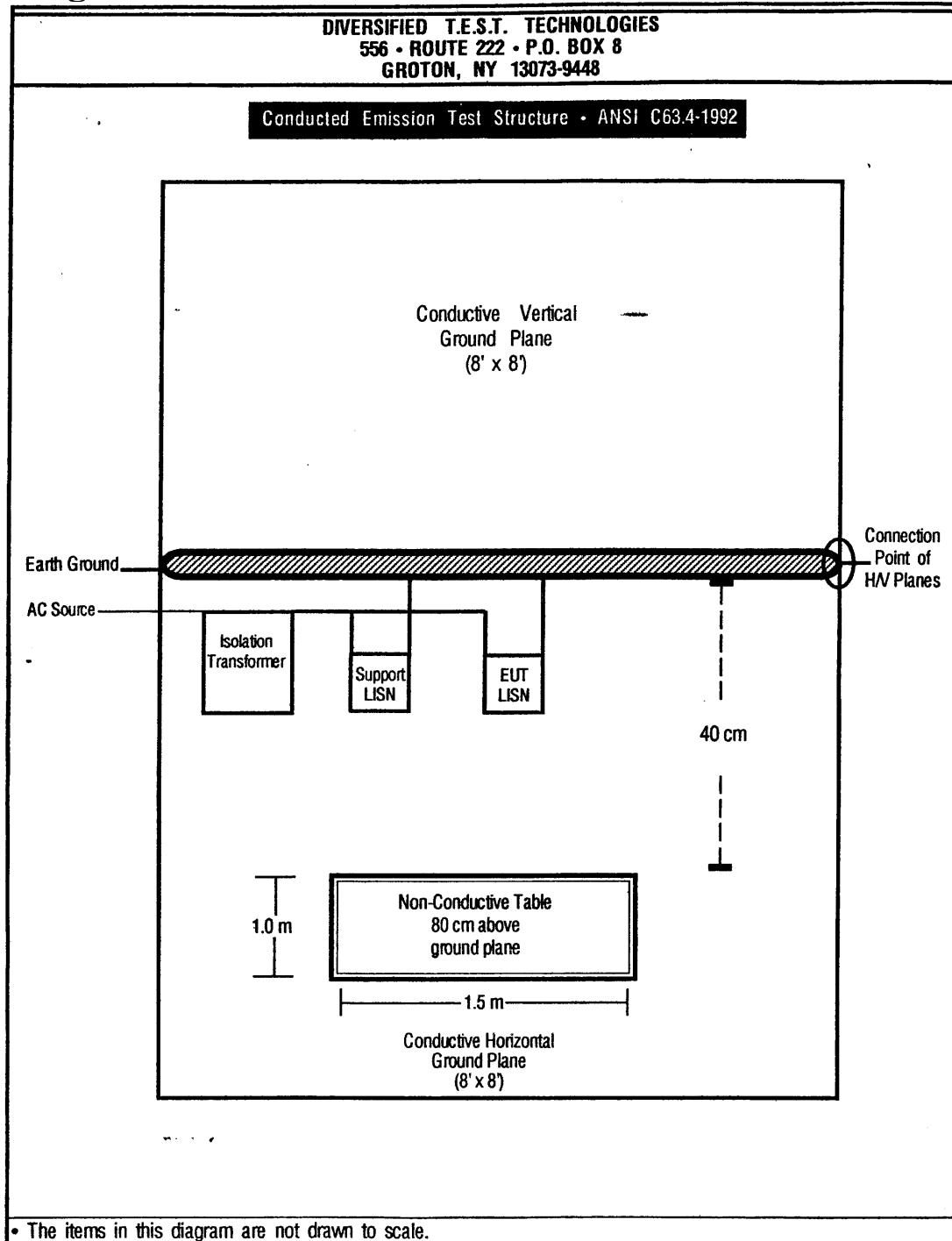
* Limit exceeded

**DIVERSIFIED T.E.S.T. TECHNOLOGIES, INC. FCC Part 15 Class C Section 15.209
TEST REPORT**

Zeecraft Tech.
Inquisitor Transmitter

Project Number:
5583

Diagrams for Conducted Emissions



*This report shall not be reproduced, except in full, without the written approval of DTT, Inc.
And must not be used to claim product endorsement by NVLAP or any agency of the U.S. Government.*

<i>DIVERSIFIED T.E.S.T. TECHNOLOGIES, INC. FCC Part 15 Class C Section 15.209 TEST REPORT</i>	
Zeecraft Tech. Inquisitor Transmitter	Project Number: 5583

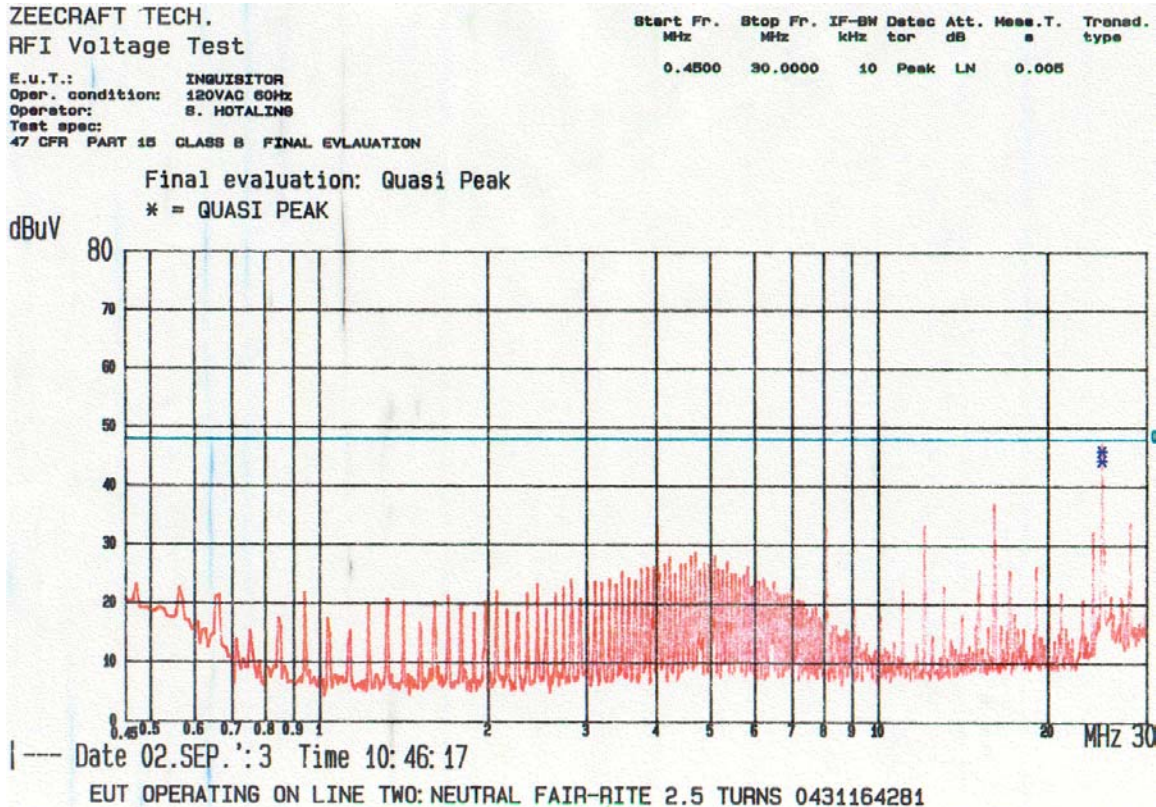
*This report shall not be reproduced, except in full, without the written approval of DTT, Inc.
And must not be used to claim product endorsement by NVLAP or any agency of the U.S. Government.*

**DIVERSIFIED T.E.S.T. TECHNOLOGIES, INC. FCC Part 15 Class C Section 15.209
TEST REPORT**

Zeecraft Tech.
Inquisitor Transmitter

Project Number:
5583

Data Charts for Conducted Emissions



ZEECRAFT TECH.
RFI Voltage Test

E.U.T.: INQUISITOR
Date: 02.SEP.:3

Exceeding values			
Frequency MHz	Peak dBuV	G-Peak dBuV	GP-Margin dB
24.9990	47.5	46.1	-1.9
25.0060	47.4	44.4	-3.6
* Limit exceeded			

**DIVERSIFIED T.E.S.T. TECHNOLOGIES, INC. FCC Part 15 Class C Section 15.209
TEST REPORT**

Zeecraft Tech.
Inquisitor Transmitter

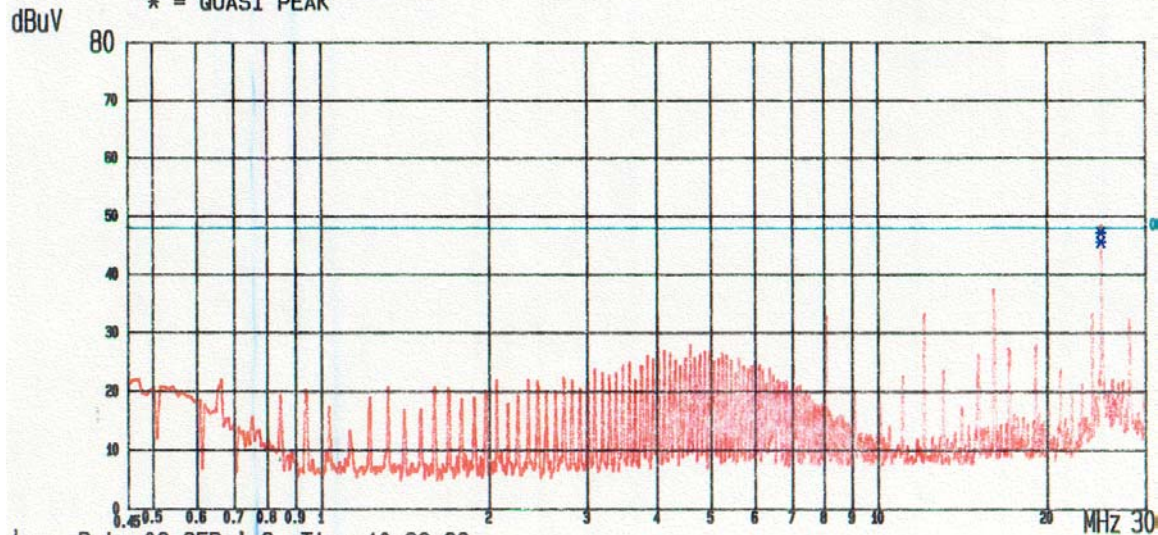
Project Number:
5583

**ZEECRAFT TECH.
RFI Voltage Test**

E.U.T.: INQUISITOR
Oper. condition: 120VAC 60Hz
Operator: S. NOTALINE
Test spec:
47 CFR PART 15 CLASS B FINAL EVALUATION

Start Fr. MHz	Stop Fr. MHz	IF-BW kHz	Detec tor	Att. dB	Meas. T. s	Transd. type
0.4500	30.0000	10	Peak	LN	0.005	

Final evaluation: Quasi Peak
* = QUASI PEAK



--- Date 02.SEP.:3 Time 10:32:38

EUT OPERATING ON LINE ONE: HOT FAIR-RITE 2.5 TURNS 0431164281

**ZEECRAFT TECH.
RFI Voltage Test**

E.U.T.: INQUISITOR
Date: 02.SEP.:3

Exceeding values			
Frequency MHz	Peak dBuV	Q-Peak dBuV	QP-Margin dB
24.9990	48.8	47.2	-0.8
25.0060	48.6	45.6	-2.4

* Limit exceeded

**DIVERSIFIED T.E.S.T. TECHNOLOGIES, INC. FCC Part 15 Class C Section 15.209
TEST REPORT**

Zeecraft Tech.
Inquisitor Transmitter

Project Number:
5583

Reference: FCC, Part 15, Subpart C, Sec. 15.231. (a.1.)


The spectrum analyzer was set at a sweep time of 50 ms. When the transmitter button was pressed the signal was sent at such a rapid speed it could not be seen.

The intermittent signal is sent by a switch, which will automatically deactivate the transmitter within not more than 5 seconds of being released.

1 scan attached.

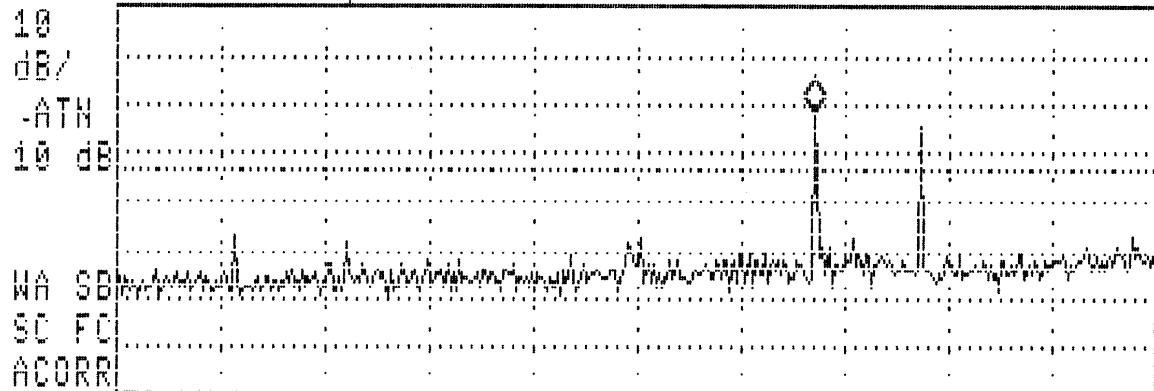
09:21:55 SEP 03, 2003

hjt

Signal	Freq (MHz)	PK Amp	QP Amp	AV Amp
	433.948550	58.4	58.1	58.1

FREQ	433.9 MHz
PEAK	58.4 dBµV/m
QP	58.1 dBµV/m
AVG	58.1 dBµV/m

LOG REF 80.0 dBµV/m



START 300.0 MHz

IF BW 120 kHz

AVG BW 300 kHz

STOP 500.0 MHz

SWP 41.7 msec