

---

May 28, 2004  
Federal Communications Commission  
Equipment Approval Services  
7435 Oakland Mills Road  
Columbia, MD 21046

**SUBJECT : Techsan I&C Co., Ltd.**  
**FCC ID: RJ5LM17**  
**FCC Part 15 Subpart B Certification**

Gentlemen:

Transmitted herewith, on behalf of Techsan Co I&C Co. Ltd. is an application for a FCC Part 15 Subpart B Certification of the following 17-inch LCD Monitor :

**FCC ID : RJ5LM17**  
**Models No. : LM1730A, LM1735A, LM1740A, LM1745A**

Attached is the applicant's Cover Letter, External/Internal Photos, Test Set-Up Photos, FCC ID & Label Location, User Manual, Block Diagram and Test Report.

Should you have any questions or comments concerning the above, please contact the undersigned.



KI SOO KIM ([kisookim@hct.co.kr](mailto:kisookim@hct.co.kr), 82-31-639-8506)  
EMC MANAGER

cc: Mr. IN SUNG SHIM ----- Quality Control Team / GENERAL MANAGER

---

## • Solution for EMI

**We, TECHSAN I & C CO., LTD. , announce that all modifications will be incorporated into each unit sold in the U.S.**

1. Attach a ferrite core to the OSD signal interface cable
2. Attach a piece of copper foil by bridging it from the LCD panel frame to the OSD board
3. Attach a conductive gasket at the LCD's rear panel

(Please refer to next page of the photographs for Solution for EMI)

**TECHSAN I & C CO., LTD.**

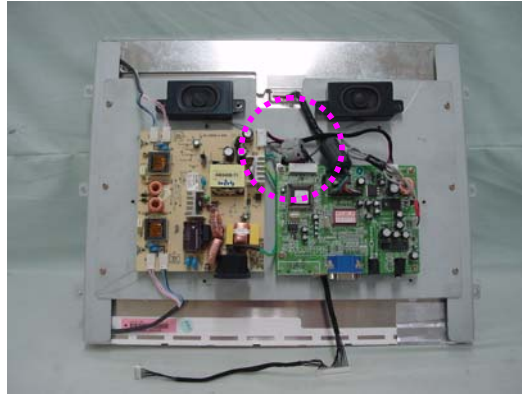
**2004. 5. 28**

**Quality Control Team / GENERAL MANAGER**  
[isshim@techsan.co.kr](mailto:isshim@techsan.co.kr) , 82-31-665-7190(210)

**IN SUNG SHIM**



- 
1. Apply a ferrite core to the OSD signal interface cable



2. Attach a piece of copper foil by bridging it from the LCD panel frame to the OSD board



3. Attach a conductive gasket at the LCD's rear panel

