

**HYUNDAI CALIBRATION & CERTIFICATION TECH. CO., LTD.**

Product Compliance Division, EMC Team  
SAN 136-1, AMI-RI, BUBAL-EUP, ICHEON-SI, KYOUNKI-DO, 467-701, KOREA  
TEL : +82 31 639 8518 FAX : +82 31 639 8525

**CERTIFICATION**

**Manufacture;**  
**TECHSAN I & C CO., LTD.**

**436, MOGOK-DONG, PYEONGTAEK-SI,  
GYEOUNGGI-DO, KOREA**

**TECHSAN I & C FRN : 009419888**

**Date of Issue : May 25, 2004**

**Test Report No.: HCT-F04-0502**

**Test Site: HYUNDAI CALIBRATION & CERTIFICATION  
TECHNOLOGIES CO., LTD.**

**HCT FRN : 0005-8664-21**

**FCC ID :**

**RJ5LM15**

**MODEL(S) :**

**LM1530A, LM1535A, LM1540A, LM1545A**

<b>Rule Part(s):</b>	<b>Part 15 &amp; 2; ET Docket 95-19</b>
<b>Equipment Class:</b>	<b>FCC Class B Peripheral Device (JBP)</b>
<b>Standard(s):</b>	<b>FCC Class B: 1998 (CISPR 22)</b>
<b>EUT Type:</b>	<b>15" LCD Monitor</b>
<b>Max. Resolution(s):</b>	<b>1024 X 768 (@60KHz/75Hz)</b>
<b>Model(s):</b>	<b>LM1530A, LM1535A, LM1540A, LM1545A</b>
<b>Port/Connector(s)</b>	<b>15-pin D-sub VGA connector, AUDIO IN.</b>
<b>LCD Panel</b>	<b>SAMSUNG Electronics (LTM150XH-L01)</b>

This equipment has been shown to be in compliance with the applicable technical standards as indicated in the measurement report and was tested in accordance with the measurement procedures specified in ANSI C63.4-2001 (Grant Notes: #19, #28).

I attest to the accuracy of data. All measurements reported herein were performed by me or were made under my supervision and are correct to the best of my knowledge and belief. I assume full responsibility for the completeness of these measurements and vouch for the qualifications of all persons taking them.



Report prepared by : Ki-Soo Kim

Manager of EMC Tech. Part

# TABLE OF CONTENTS

## PAGE

<b>REPORT COVER</b>	<b>1</b>
<b>TABLE OF CONTENTS</b>	<b>2</b>
<b>1.1 SCOPE</b>	<b>3</b>
<b>2.1 INTRODUCTION (SITE DESCRIPTION)</b>	<b>4</b>
<b>3.1 PRODUCTION INFORMATION</b>	<b>5-6</b>
<b>4.1 PRELIMINARY TESTS</b>	<b>7</b>
<b>5.1 DESCRIPTION OF TESTS</b>	<b>8-9</b>
<b>6.1 LIST OF SUPPORT EQUIPMENT</b>	<b>10-11</b>
<b>7.1 TEST DATA (CONDUCTED)</b>	<b>12-15</b>
<b>8.1 TEST DATA (RADIATED)</b>	<b>16</b>
<b>9.1 SAMPLE CALCULATIONS</b>	<b>17</b>
<b>10.1 TEST EQUIPMENT</b>	<b>18</b>
<b>11.1 TEST SOFTWARE USED</b>	<b>19</b>
<b>12.1 CONCLUSION</b>	<b>20</b>

<b>ATTACHMENT A:</b>	<b>FCC ID LABEL &amp; LOCATION</b>
<b>ATTACHMENT B:</b>	<b>EXTERNAL PHOTOGRAPHS</b>
<b>ATTACHMENT C:</b>	<b>BLOCK DIAGRAM(S)</b>
<b>ATTACHMENT D:</b>	<b>TEST SETUP PHOTOGRAPHS</b>
<b>ATTACHMENT E:</b>	<b>USER'S MANUAL</b>
<b>ATTACHMENT F-1:</b>	<b>INTERNAL PHOTOGRAPHS</b>
<b>ATTACHMENT F-2:</b>	<b>INTERNAL PHOTOGRAPHS</b>
<b>ATTACHMENT F-3:</b>	<b>INTERNAL PHOTOGRAPHS</b>

# MEASUREMENT REPORT

## 1.1 Scope

Measurement and determination of electromagnetic emissions (EME) of radio frequency devices including intentional and/or unintentional radiators for compliance with the technical rules and regulations of the Federal Communications Commission.

<b>Applicant Name:</b>	<b>TECHSAN I &amp; C</b>
<b>Address:</b>	<b>436, MOGOK-DONG, PYEONGTAEK-SI, GYEOUNGGI-DO, KOREA</b>

- **FCC ID : RJ5LM15**
- Equipment Class: FCC Class B Peripheral Device (JBP)
- EUT Type: 15" LCD MONITOR
- Model(s): LM1530A, LM1535A, LM1540A, LM1545A
- LCD Panel: SAMSUNG Electronics (LTM150XH-L01)
- Max. Resolution: 1024 X 768 (@60KHz/75Hz)
- Frequency Range : V-Sync: 56.3Hz – 75.0Hz , H-Sync: 31.47kHz – 60.02kHz
- Cable(s): Shielded D-Sub (with ferrite on both ends)
- Power Cord: Unshielded
- Rule Part(s): FCC Part 15 Subpart B
- Test Procedure(s): ANSI C63.4 (2001)
- Dates of Tests: April 26, 2004 ~ May 12, 2004
- Place of Tests: 254-1,MAEKOK-RI,HOBUP-MYUN,ICHON-SI,KYOUNGKI-DO,467-701,KOREA

## 2.1 INTRODUCTION

The measurement procedure described in American National Standard for Methods of Measurement of Radio-Noise Emissions from Low-Voltage Electrical and Electronic Equipment in the Range of 9kHz to 40GHz (ANSI C63.4-2001) was used in determining radiated and conducted emissions emanating from **TECHSAN I & C CO.,LTD. 15-inch LCD Monitor FCC ID: RJ5LM15**

The open area test site and conducted measurement facility used to collect the radiated data are located at the 254-1, MAEKOK-RI, HOBUP-MYUN, ICHON-SI, KYOUNGKI-DO, 467-701, KOREA. The site is constructed in conformance with the requirements of ANSI C63.4 and CISPR Publication 22. Detailed description of test facility was submitted to the Commission and accepted dated July 23, 2003 (Confirmation Number: EA90661)

## 3.1 PRODUCT INFORMATION

### 3.2 Equipment Description

Equipment Under Test (EUT) is the **TECHSAN I & C CO.,Ltd.** ( Models : LM1530A, LM1535A, LM1540A, LM1545A ) **15-inch LCD Monitor**

FCC ID: : **RJ5LM15**

Maximum Resolution(s): 1024 X 768 (@60KHz/75Hz)

Frequency Range(s): H-Sync: 31.47kHz – 60.02kHz

V-Sync: 56.3Hz – 75.0 Hz

Pixel Pitch: 0.297mm

Power Supply: AC 100-240V, 1.0A

Power Cord: *Unshielded* AC power cord

Port(s)/Input Connector(s): 15-pin D-sub VGA connector, AUDIO IN.

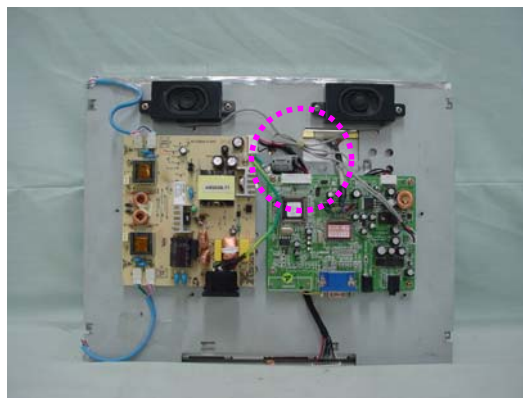
Cable(s): Shielded D-Sub (with ferrite on both ends)

Dimensions (W×H×D): 347.6 X 373 X 170mm

Weight (Net) : 5.5 (4.3)Kg unpacked

### EMI Suppression Devices:

1. Apply a ferrite core to the OSD signal interface cable



2. Attach a piece of copper foil by bridging it from the LCD panel frame to the OSD board



3. Attach a conductive gasket at the LCD's rear panel



## 4.1 PRELIMINARY TESTS

### 4.1 AC Power line Conducted Emission Tests

During Preliminary Tests, the following models were investigated

Model name	Conducted emission Level (Margin)	The worst model
LM1530A	1.000MHz ; 40.90dBuV (15.1 dB)	
LM1535A	2.220MHz ; 41.30dBuV (14.7 dB)	
LM1540A	0.925MHz ; 41.80dBuV (14.2 dB)	X
LM1545A	15.460MHz ; 39.70dBuV (16.3 dB)	

### 4.2 Radiated Emission Tests

During Preliminary Tests, the following models were investigated

Model name	Radiated emission Level (Margin)	The worst model
LM1530A	220.5MHz ; 24.6dBuV/m (5.4 dB)	
LM1535A	232.4MHz ; 32.2dBuV/m (4.8 dB)	
LM1540A	551.3MHz ; 32.6dBuV/m (4.4 dB)	X
LM1545A	617.4MHz ; 31.8dBuV/m (5.2 dB)	

Tested by Byung-Ki Ham / Engineer

Date : April 26, 2004 ~ May 10, 2004

## 5.1 Description of Tests

### 5.2 Description of Tests(Conducted)

The power line conducted RFI measurements were performed according to CISPR 22.

The EUT was placed on a non-conducting 1.0 by 1.5 meter table which is 0.8 meters in height and 0.40 meters away from the vertical wall of the shielded enclosure. Power to the EUT is provided through a Rohde & Schwarz 50  $\Omega$  / 50 uH Line Impedance Stabilization Network (LISN) and the support equipment through a separate Solar 50  $\Omega$  / 50 uH Line- Conducted Test Facility LISN. Sufficient time for the EUT, support equipment, and test equipment were allowed in order for them to warm up to their normal operating condition. The RF output of the LISN was connected to the spectrum analyzer to determine the frequency producing the maximum EME. The spectrum was scanned from 150kHz to 30 MHz. Each maximum EME was remeasured using an EMI receiver. The detector function of the receiver was set to CISPR quasi- peak and average mode with the bandwidth set to 9 kHz. Each emission was maximized consistent with the typical applications by varying the configuration of the test sample. Interface cables were connected to the available interface ports of the test unit. The effect of varying the position of cables was investigated to find the configuration that produces maximum Diagram emission. Excess cable lengths were bundled at the center with 30- 40cm. in length. The worst-case configuration is noted in the test report and the photographs are attached. Each EME reported was calibrated using the Rohde & Schwarz SMX signal generator and are listed on Table 1. RFI Conducted FCC Class B

RFI CONDUCTED	CISPR 22 CLASS B Limits dB(uV/m)	
	CISPR 22 Quasi-Peak	CISPR 22 Average
150kHz - 0.5MHz	66-56**	56-46**
0.5MHz - 5MHz	56	46
5MHz - 30MHz	60	50
*FCC Class B limits starts from 450kHz		
**Limits decreases linearly with the logarithm of frequency		

Table 1. RFI Conducted Limits



## 5.3 Description of Tests(Radiated)

### Radiated Emissions

Preliminary measurements were made indoors at 1 meter using broadband antennas, broadband amplifier, and spectrum analyzer to determine the frequency producing the maximum EME. Appropriate precaution was taken to ensure that all EME from the EUT were maximized and investigated. The spectrum was scanned from 30 to 300 MHz using biconical antenna, 300 to 1000 MHz using log- periodic antenna, and above 1 GHz using linearly polarized horn antennas. Final measurements were made outdoors at 10-meter test range using Dipole antennas and EMI receiver. For frequencies above 1 GHz, horn antennas were used. Sufficient time for the EUT, support equipment, and test equipment were allowed in order for them to warm up to their normal operating condition. The EMI receiver detector function was set to CISPR quasi-peak mode and the bandwidth of the receiver was set to 120 kHz. The EUT, support equipment, and interconnecting cables were arranged to the configuration that produces the maximum EME emission found during preliminary scan. The turntable containing the system was rotated; the antenna height was varied 1 to 4 meters and stopped at the azimuth or height producing the maximum emission. Horizontal and vertical antenna polarizations were checked. Each emission was maximized by: varying the mode of operation or resolution; clock or data exchange speed; scrolling H pattern to the EUT and/ or support equipment, and powering the monitor the computer aux AC outlet, if applicable; and changing the polarity of the antenna, whichever determined the worst-case emission.

ITE Radiated Limits	
Frequency (MHz)	CISPR Limit @ 10m. Quasi-Peak dB [μV/m]
30-88	30.0
88-216	30.0
216-230	30.0
230-960	37.0
960-1000	37.0
> 1000	No Specified Limit
* Limit extrapolated 20 dB/decade	

Table 2. Radiated Class B limits @ 10-meters

## 6.1 Support Equipment Used

DEVICE TYPE	MANUFACTURER	MODEL NUMBER	FCC ID / DoC	CONNECTED TO
MONITOR (EUT)	TECHSAN I & C CO., LTD.	LM1530A, LM1535A LM1540A, LM1545A	RJ5LM15	P.C
P.C	H/P	HP Pavilion 8921	DoC	N/A
KEY BOARD	H/P	5181	DoC	P.C
MOUSE	Microsoft	IntelliMouse	DoC	P.C
PRINTER	H/P	C4569A	DoC	P.C
SERIAL MOUSE	Logitech	M-M28	DoC	P.C

## 6.2 Cable Description

	Power Cord Shielded (Y/N)	I/O Cable Shielded (Y/N)	Length (M)
<b>MONITOR(EUT)</b>	N	Y	1.8(P), 1.5(D)
<b>PC(HOST)</b>	N	N/A	1.8(P)
<b>KEY BOARD</b>	N/A	Y	1.8(D)
<b>MOUSE</b>	N/A	Y	1.8(D)
<b>PRINTER</b>	N	Y	1.8(P), 1.8(D)
<b>SERIAL MOUSE</b>	N/A	Y	1.8(D)
<b>AUDIO IN</b>	N/A	Y	1.5(D)

The marked "(D)" means the Data Cable and "(P)" means the Power Cable.

## 6.3 Noise Suppression Parts on Cable. (I/O CABLE)

	Ferrite Bead (Y/N)	Location	Metal Hood (Y/N)	Location
<b>MONITOR(EUT)</b>	Y	BOTH END	Y	BOTH END
<b>KEY BOARD</b>	N	N/A	Y	P.C END
<b>MOUSE</b>	Y	N/A	Y	P.C END
<b>PRINTER</b>	N	N/A	Y	BOTH END
<b>SERIAL MOUSE</b>	N	N/A	Y	EUT END
<b>AUDIO IN</b>	Y	BOTH END	N	N/A

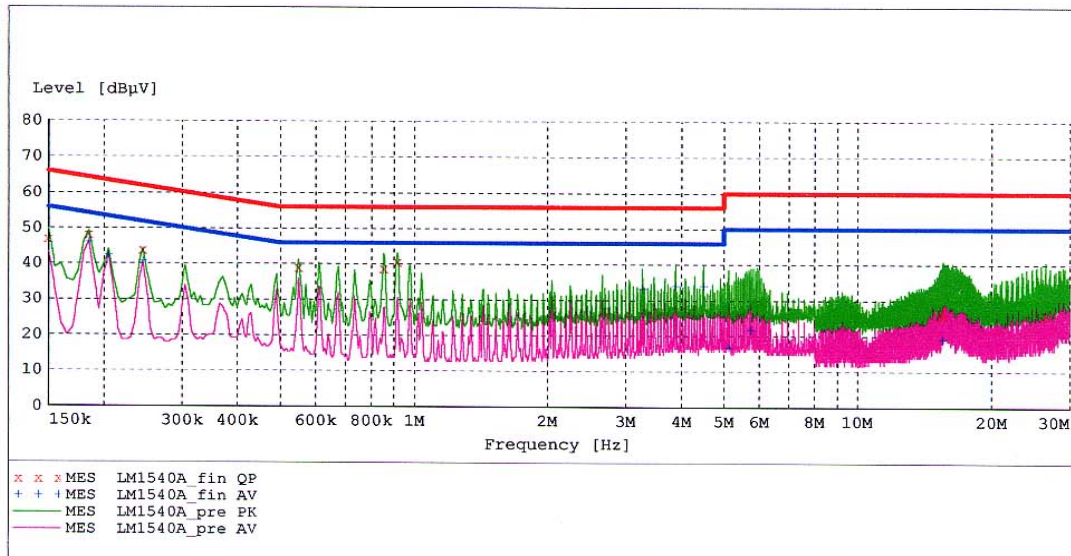
## 7.1 LINE-CONDUCTED TEST DATA

### HYUNDAI C-TECH EMC TESTING Laboratory

EUT: LM1540A  
Manufacturer: TECHSAN I & C CO., LTD.  
Operating Condition: 1024 X768 75Hz  
Test Site: SHIELD ROOM  
Operator: KS-KIM  
Test Specification: CISPR 22 CLASS B  
Comment: N  
Start of Test: 5/12/04 / 9:32:19AM

#### SCAN TABLE: "CISPR 22 Voltage"

Short Description:		CISPR 22 Voltage					Transducer
Start	Stop	Step	Detector	Meas. Time	IF Bandw.		
150.0 kHz	500.0 kHz	5.0 kHz	MaxPeak	10.0 ms	9 kHz	None	
500.0 kHz	5.0 MHz	5.0 kHz	Average	10.0 ms	9 kHz	None	



#### MEASUREMENT RESULT: "LM1540A\_fin QP"

5/12/04 9:35AM

Frequency MHz	Level dBμV	Transd dB	Limit dBμV	Margin dB	Line	PE
0.150000	46.90	10.1	66	19.1	1	---
0.185000	48.10	10.1	64	16.2	1	---
0.245000	43.80	10.1	62	18.1	1	---
0.550000	39.00	10.1	56	17.0	1	---
0.855000	38.70	10.1	56	17.3	1	---
0.920000	40.50	10.1	56	15.5	1	---
15.525000	27.20	10.5	60	32.8	1	---
15.585000	25.80	10.5	60	34.2	1	---
26.490000	25.90	10.6	60	34.1	1	---

**MEASUREMENT RESULT: "LM1540A\_fin AV"**

5/12/04 9:35AM

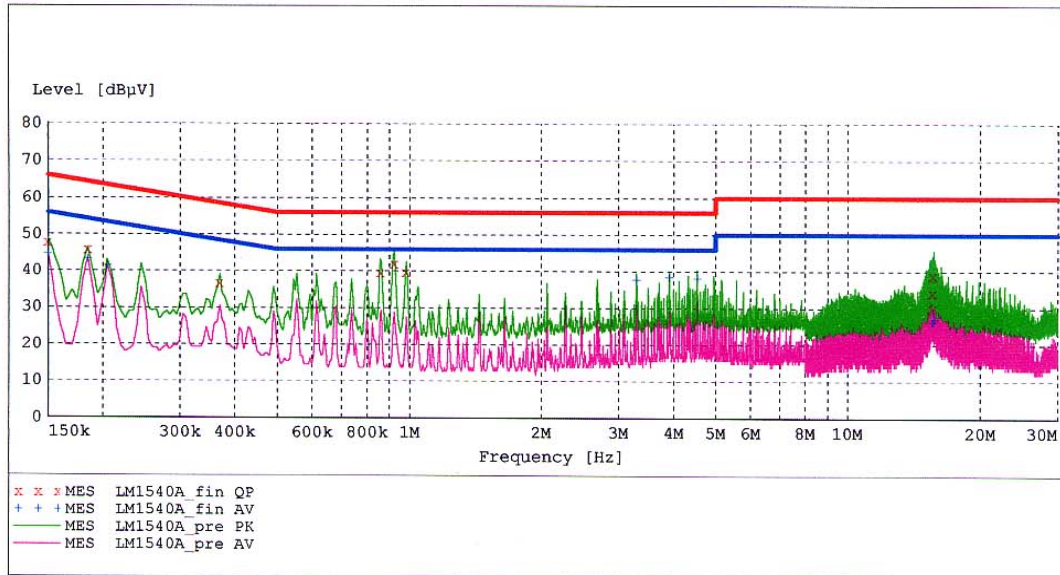
Frequency MHz	Level dBμV	Transd dB	Limit dBμV	Margin dB	Line	PE
0.185000	46.20	10.1	54	8.0	1	---
0.205000	42.50	10.1	53	10.9	1	---
0.245000	40.70	10.1	52	11.2	1	---
3.275000	33.20	10.2	46	12.8	1	---
3.890000	34.20	10.3	46	11.8	1	---
4.505000	34.00	10.3	46	12.0	1	---
5.125000	16.70	10.3	50	33.3	1	---
5.765000	21.80	10.3	50	28.2	1	---
15.585000	19.30	10.5	50	30.7	1	---

**HYUNDAI C-TECH  
EMC TESTING Laboratory**

EUT: LM1540A  
 Manufacturer: TECHSAN I & C CO., LTD.  
 Operating Condition: 1024 X768 75Hz  
 Test Site: SHIELD ROOM  
 Operator: KS-KIM  
 Test Specification: CISPR 22 CLASS B  
 Comment: H  
 Start of Test: 5/12/04 / 9:37:20AM

**SCAN TABLE: "CISPR 22 Voltage"**

Short Description:			CISPR 22 Voltage				
Start	Stop	Step	Detector	Meas. Time	IF Bandw.	Transducer	
Frequency	Frequency	Width					
150.0 kHz	500.0 kHz	5.0 kHz	MaxPeak	10.0 ms	9 kHz	None	
			Average				
500.0 kHz	5.0 MHz	5.0 kHz	MaxPeak	10.0 ms	9 kHz	None	
			Average				


**MEASUREMENT RESULT: "LM1540A\_fin QP"**

5/12/04 9:40AM

Frequency MHz	Level dBµV	Transd dB	Limit dBµV	Margin dB	Line	PE
0.150000	47.80	10.1	66	18.2	1	---
0.185000	45.70	10.1	64	18.5	1	---
0.370000	36.70	10.1	59	21.8	1	---
0.860000	39.50	10.1	56	16.5	1	---
0.925000	41.80	10.1	56	14.2	1	---
0.985000	39.60	10.1	56	16.4	1	---
15.595000	34.10	10.5	60	25.9	1	---
15.660000	38.90	10.5	60	21.1	1	---
15.715000	30.00	10.5	60	30.0	1	---

**MEASUREMENT RESULT: "LM1540A\_fin AV"**

5/12/04 9:40AM

Frequency MHz	Level dBμV	Transd dB	Limit dBμV	Margin dB	Line	PE
0.150000	44.80	10.1	56	11.2	1	---
0.185000	43.30	10.1	54	11.0	1	---
0.205000	41.40	10.1	53	12.0	1	---
3.305000	37.70	10.2	46	8.3	1	---
3.925000	38.60	10.3	46	7.4	1	---
4.545000	38.30	10.3	46	7.7	1	---
15.595000	26.50	10.5	50	23.5	1	---
15.720000	28.90	10.5	50	21.1	1	---
15.780000	27.10	10.5	50	22.9	1	---

**NOTES:**

1. All modes of operation were investigated and the worst-case emissions are reported.
2. The CISPR RFI conducted limits are listed on Table 1 (Page 6).
3. Line H = Hot , N = Neutral

---

 \*\* Measurements using CISPR quasi-peak mode.

## 8.1 RADIATED TEST DATA

Frequency MHz	Reading dBuV	Ant. Factor dB	Cable Loss dB	ANT POL (H/V)	Total dBuV/m	Limit dBuV/m	Margin dB
143.9	6.65	14.62	2.6	V	23.9	30	-6.1
177.1	3.88	15.82	3.0	H	22.7	30	-7.3
185.4	4.48	15.98	3.1	V	23.5	30	-6.5
199.9	4.67	16.24	3.2	V	24.1	30	-5.9
210.1	3.97	16.55	3.3	H	23.8	30	-6.2
215.4	2.48	16.70	3.3	V	22.5	30	-7.5
430.6	9.82	17.83	4.8	V	32.4	37	-4.6
483.2	7.11	18.88	5.0	H	31.0	37	-6.0
551.3	7.00	20.25	5.4	V	32.6	37	-4.4
617.4	4.35	21.66	5.7	V	31.7	37	-5.3
644.3	4.24	22.54	5.8	V	32.6	37	-4.4
686.7	3.64	22.53	6.0	H	32.2	37	-4.8

Radiated Measurements at 10-meters.

**1024 X 768 (@60KHz/75Hz)**

### NOTES:

1. All modes of operation were investigated, and the worst-case emissions are reported.
2. The radiated limits are listed on Table 2 (Page 8).

\*\* AFCL = Antenna Factor (Roberts dipole) and Cable Loss .

\*\*\* Measurements using CISPR quasi-peak mode. Above 1GHz, peak detector function mode is used using a resolution bandwidth of 1MHz and a video bandwidth of 1MHz. The peak level complies with the average limit. Peak mode is used with linearly polarized horn antenna and low-loss microwave cable.



## 9.1 Sample Calculations

$$\text{dB } \mu V = 20 \log_{10} (\mu V/m)$$

### 8.2 Example 1:

**@ 0.925 MHz**

Class B limit	= 56.0 dB $\mu$ V
Reading	= 41.8 dB $\mu$ V (calibrated level)
	= 41.8 – 56.0 = - 14.2
<b>Margin</b>	= <b>14.2 dB below limit</b>

### 8.3 Example 2:

**@ 551.3 MHz**

Class B limit	= 37 dB $\mu$ V/m
Reading	= 7.0 dB $\mu$ V/m (calibrated level)
Antenna Factor + Cable Loss	= 25.6 dB
Total	= 32.6 dB $\mu$ V/m
	= 32.6 – 37.0 = - 4.4
<b>Margin</b>	= <b>4.4 dB below limit</b>

## 10.1 Test Equipment

<u>Type</u>	<u>Manufacture</u>	<u>Model Number</u>	<u>CAL Date</u>
EMI Test Receiver	Rohde & Schwarz	ESH3	2003.07.16
EMI Test Receiver	Rohde & Schwarz	ESVP	2003.10.01
EMI Test Receiver	Rohde & Schwarz	ESI40	2003.11.16
EMI Test Receiver	Rohde & Schwarz	ESVS30	2003.07.16
LISN	EMCO	3816/2	2003.11.29
LISN	EMCO	3816/2	2003.08.22
Amplifier	Hewlett-Packard	8447E	2003.08.23
Absorbing Clamp	Rohde & Schwarz	MDS-21	2004.04.24
Dipole Antennas	Rohde & Schwarz	VHAP	2003.07.16
Dipole Antennas	Rohde & Schwarz	UHAP	2003.07.16
Biconical Antenna	Rohde & Schwarz	VHA9103	2003.07.12
Log-Periodic Antenna	Rohde & Schwarz	UHALP9107	2003.07.12
Antenna Position Tower	EMCO	1051-12	N/A
Turn Table	EMCO	1060-06	N/A
Power Analyzer	Voltech	PM 3300	2004.2.15
Reference Network	ImpedanceVoltech	IEC 555	N/A
AC Power Source	PACIFIC	Magnetic Module	N/A
AC Power Source	PACIFIC	360AMX	2003.11.25
Controller	HD GmbH	HD 100	N/A
EMI in Motion	HD GmbH	KMS 560	N/A

## 11.1 Test Software Used

The EUT exercise program used during radiated and conducted testing was designed to exercise the various system components in a manner similar to a typical use. The software, contained on a 3-1/2 inch disc, was inserted into drive A and is auto starting on power-up. Once loaded, the program sequentially exercises each system component in turn. The sequence used is : (1) Display test, (2) RS 232 test (3) Key board test, (4) Printer test, (5) FDD test, (6) HDD test. The complete cycle takes about 20 seconds and is repeated continuously. As the keyboard and mouse are strictly input devices, no data is transmitted to them during test. They are however, continuously scanned for data input activity. The video resolution modes setup and change program was used during the radiated and conducted emission testing.

NOTE: This is a sample of the basic program used during the test. However, during testing, a different software program may be used; whichever determines the worst-case condition. In addition, the program used also depends on the number and type of devices being tested.

Actual program used is the "H" pattern in Notepad under Windows environment. All resolution modes ( 1024x768, 800x600, 640x480, 720x400) were investigated and tested

## 12.1 Conclusion

The data collected shows that the TECHSAN I & C CO., LTD. 15-inch LCD Monitor **FCC ID:RJ5LM15**

complies with §15.107 and §15.109 of the FCC Rules.