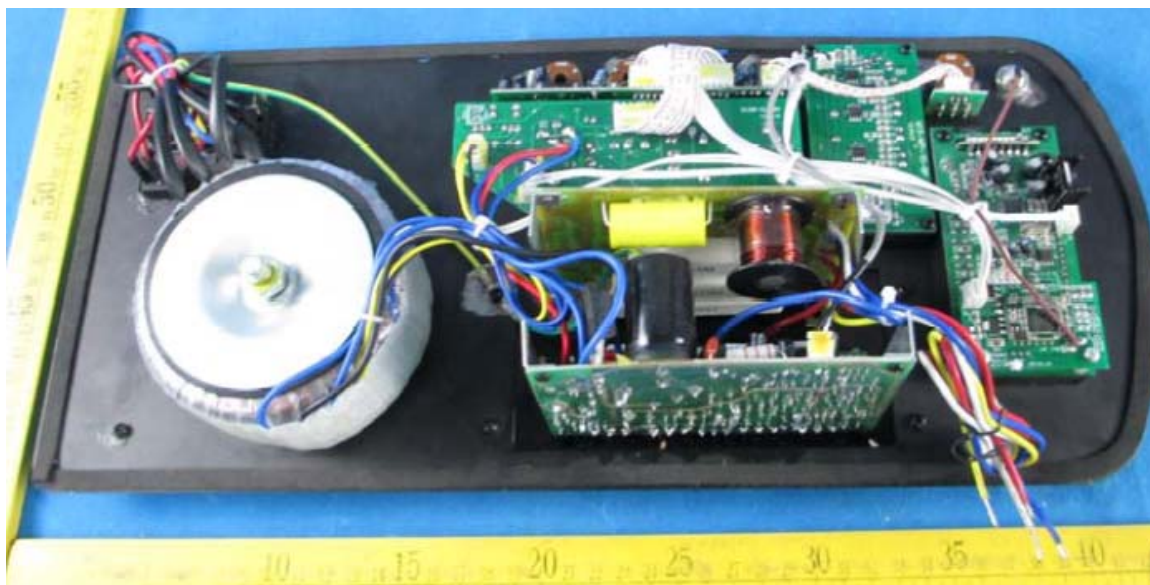


Manual

This equipment is amplifier of active BT speaker box, and no back cover. The buyer of manufacturers require a matching cover. And Fixed, into a box shape. Support Bluetooth version: V2.0 + EDR



1. Turn on power. Press the MODE button under the LED screen until BLUETOOTH appears on the LED screen. Perform bluetooth pairing operations after it is on for 30 seconds.
2. After it enters pairing mode, enable the bluetooth function for the devices such as bluetooth PC, cell phone and any other digital products with bluetooth function. Search bluetooth devices or new devices to find BLUETOOTH and connect it. Password input for pairing is needed, and the default password is :0000.
3. After successful pairing, you can play music.
4. To change the play device during normal operation, disconnect the connected bluetooth PC and/or cell phone, and then perform pairing connection for other bluetooth devices.

The Bluetooth® word mark and logos are owned by Bluetooth SIG Inc.

FCC Caution: Any changes or modifications not expressly approved by the party responsible for compliance could void the user's authority to operate this equipment.

This device complies with Part 15 of the FCC Rules. Operation is subject to the following two conditions: (1) This device may not cause harmful interference, and (2) this device must accept any interference received, including interference that may cause undesired operation. This device and its antenna(s) must not be co-located or operating in conjunction with any other antenna or transmitter.

NOTE: This equipment has been tested and found to comply with the limits for a Class B digital device, pursuant to Part 15 of the FCC Rules.

These limits are designed to provide reasonable protection against harmful interference in a residential installation. This equipment generates, uses and can radiate radiofrequency energy and, if not installed and used in accordance with the instructions, may cause harmful interference to radio communications.

However, there is no guarantee that interference will not occur in a particular installation.

If this equipment does cause harmful interference to radio or television reception, which can be determined by turning the equipment off and on, the user is encouraged to try to correct the interference by one or more of the following measures:

- Reorient or relocate the receiving antenna.
- Increase the separation between the equipment and receiver.
- Connect the equipment into an outlet on a circuit different from that to which the receiver is connected.
- Consult the dealer or an experienced radio/TV technician for help.