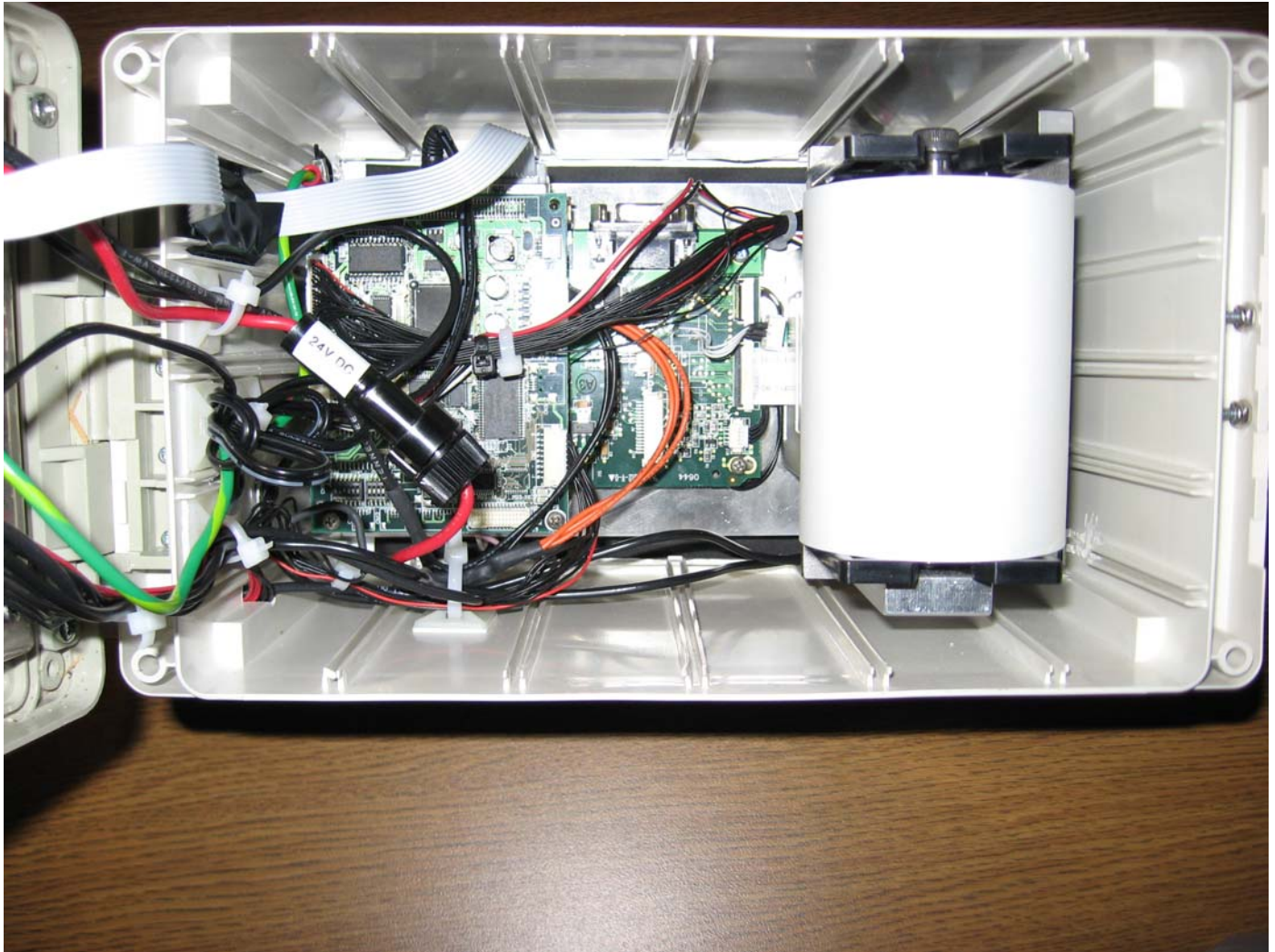
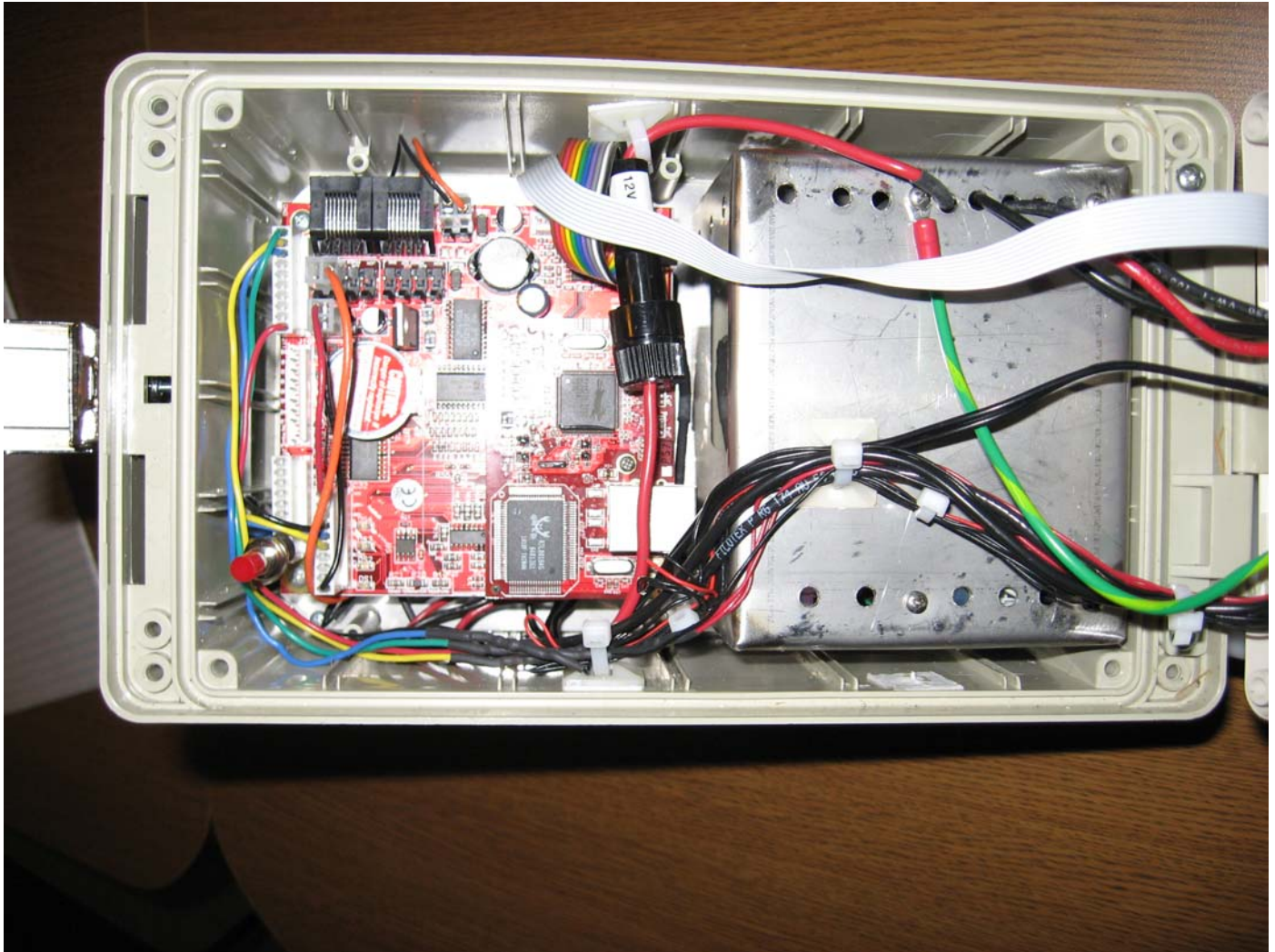


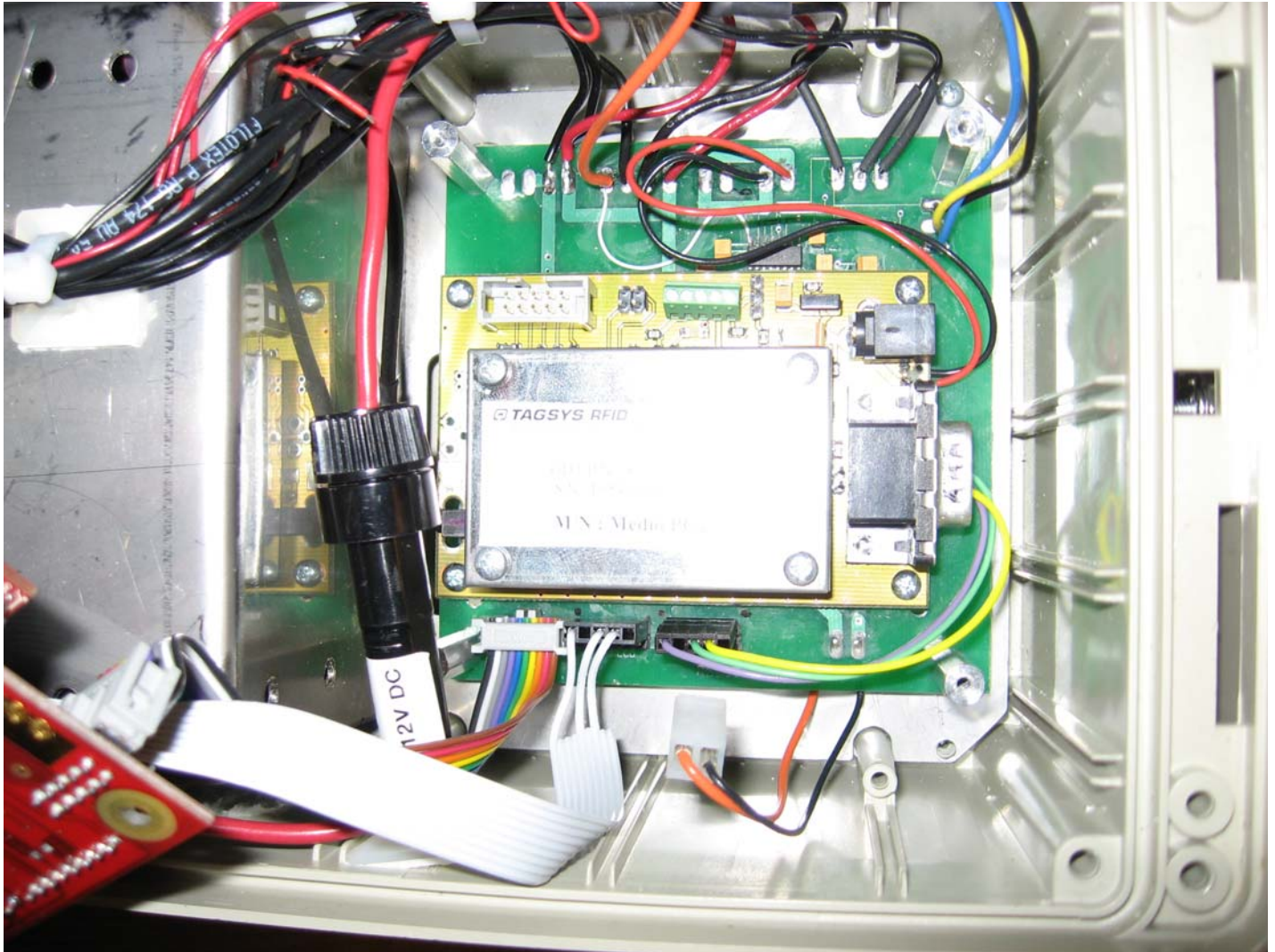
Company: Northern Apex
Model: Laboratory Water Filter Reader
FCC ID: RIN-A1479
IC: 7138A-A1479
Date: 5/9/07
Photo Description: Assembly – Front Half



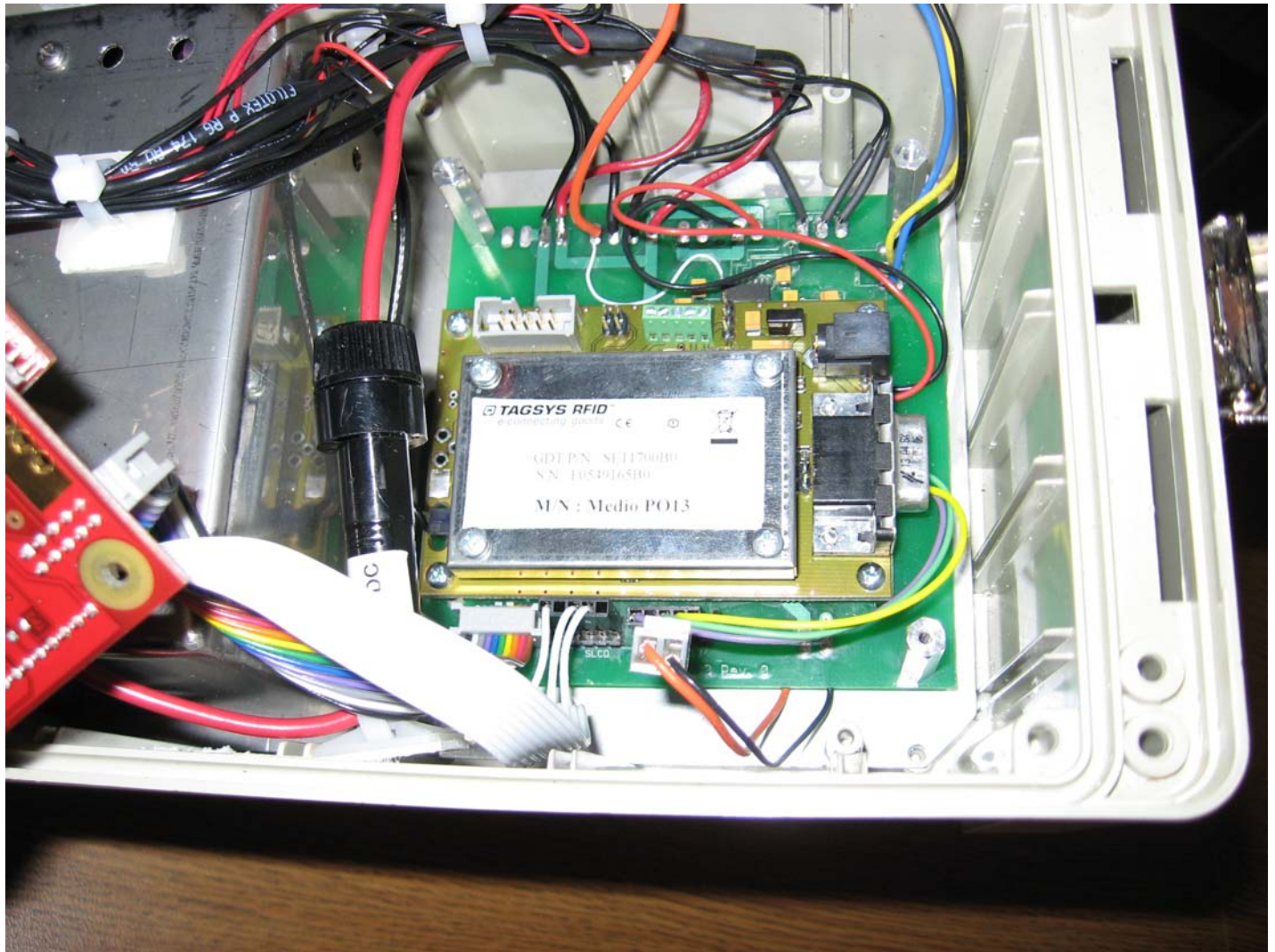
Company: Northern Apex
Model: Laboratory Water Filter Reader
FCC ID: RIN-A1479
IC: 7138A-A1479
Date: 5/9/07
Photo Description: Assembly – Back Half



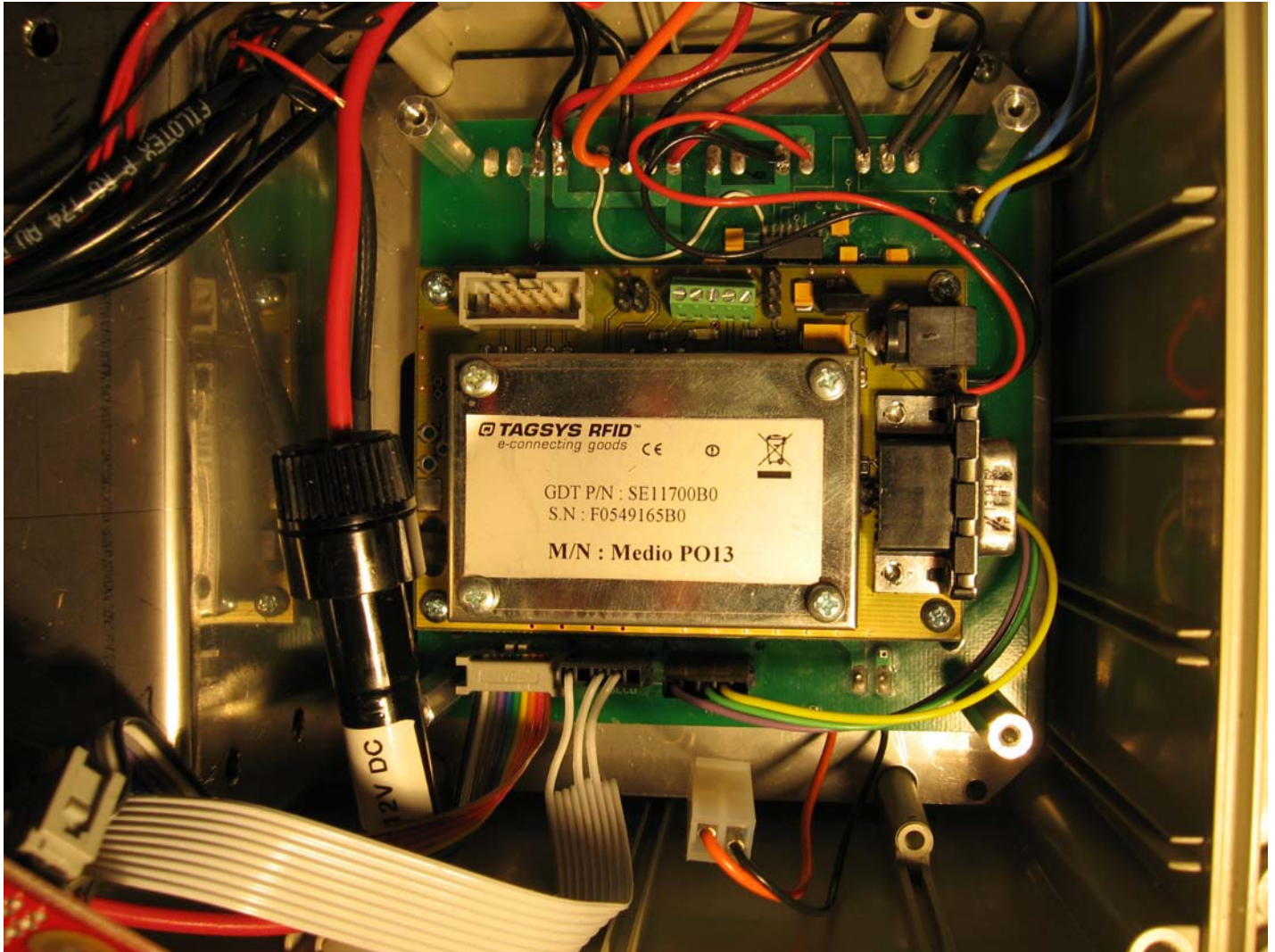
Company: Northern Apex
Model: Laboratory Water Filter Reader
FCC ID: RIN-A1479
IC: 7138A-A1479
Date: 5/9/07
Photo Description: RF Board in Assembly



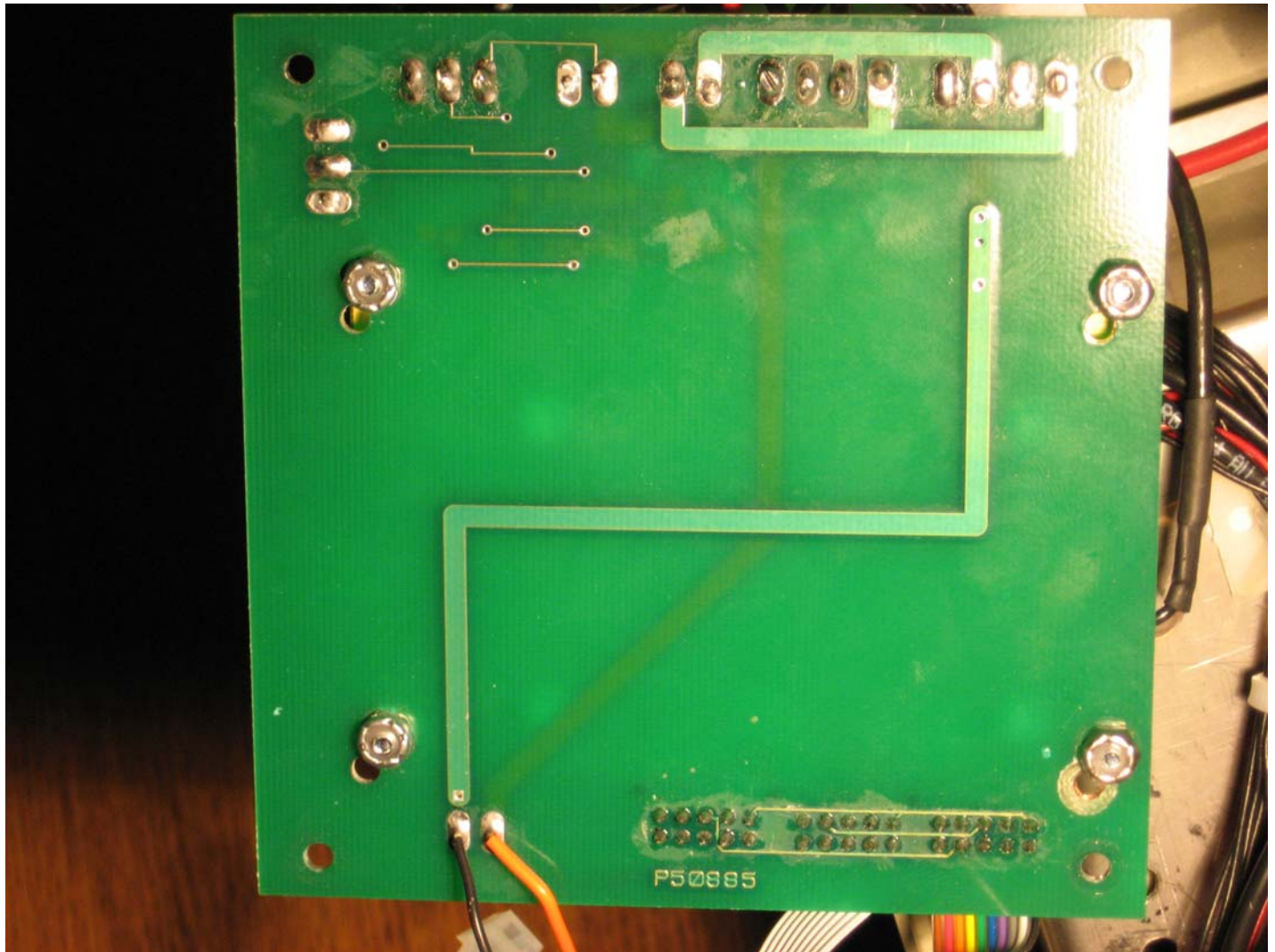
Company: Northern Apex
Model: Laboratory Water Filter Reader
FCC ID: RIN-A1479
IC: 7138A-A1479
Date: 5/9/07
Photo Description: RF Board – Assembly - Top



Company: Northern Apex
Model: Laboratory Water Filter Reader
FCC ID: RIN-A1479
IC: 7138A-A1479
Date: 5/9/07
Photo Description: RF Board – Assembly - Top



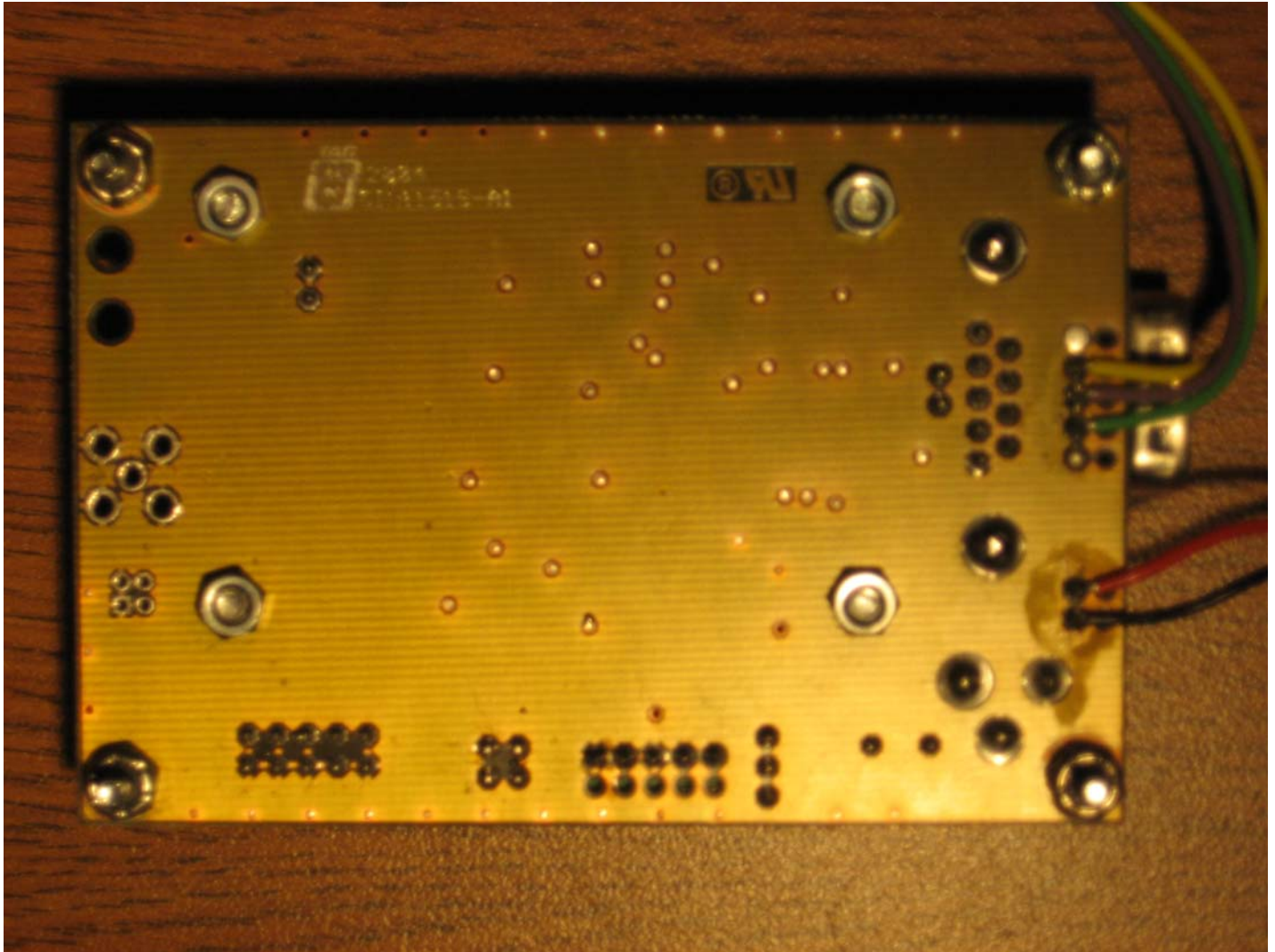
Company: Northern Apex
Model: Laboratory Water Filter Reader
FCC ID: RIN-A1479
IC: 7138A-A1479
Date: 5/9/07
Photo Description: RF Board – Assembly - Bottom



Company: Northern Apex
Model: Laboratory Water Filter Reader
FCC ID: RIN-A1479
IC: 7138A-A1479
Date: 5/9/07
Photo Description: RF Module Assembly - Top

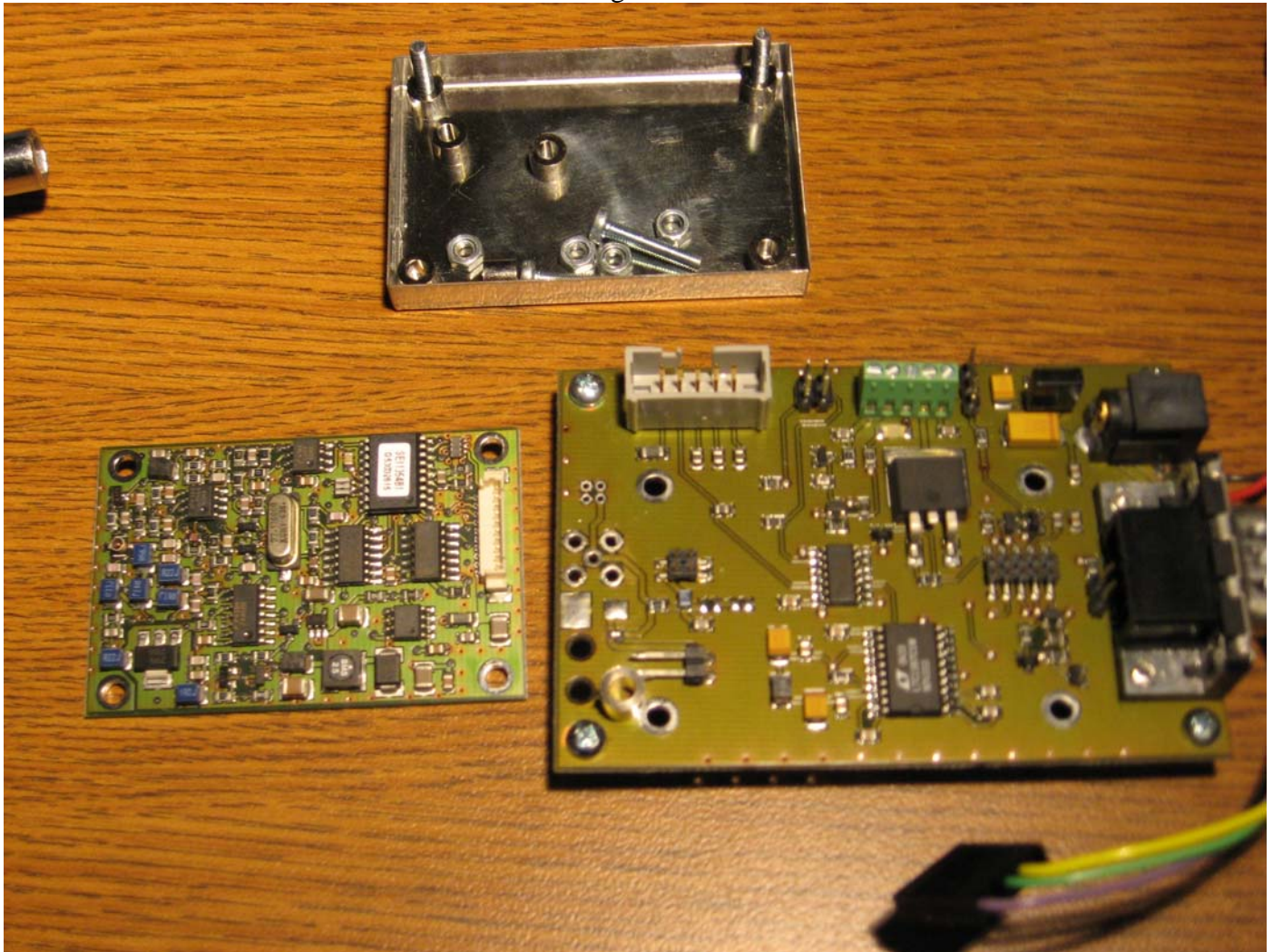


Company: Northern Apex
Model: Laboratory Water Filter Reader
FCC ID: RIN-A1479
IC: 7138A-A1479
Date: 5/9/07
Photo Description: RF Module - Bottom



Company: Northern Apex
Model: Laboratory Water Filter Reader
FCC ID: RIN-A1479
IC: 7138A-A1479
Date: 5/9/07
Photo Description: RF Module Disassembled

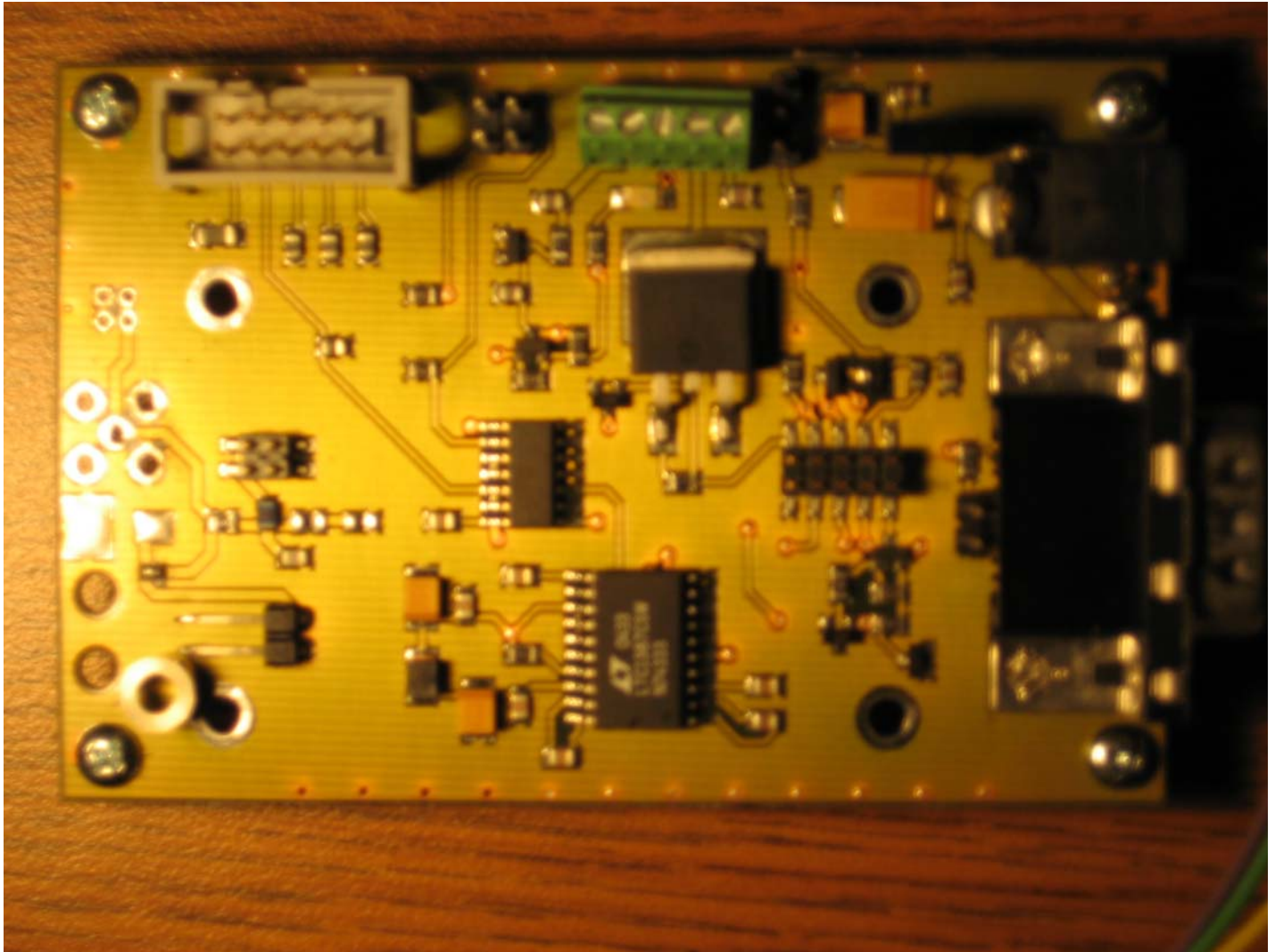
Shield for Daughter Board



Daughter Board

Mother Board

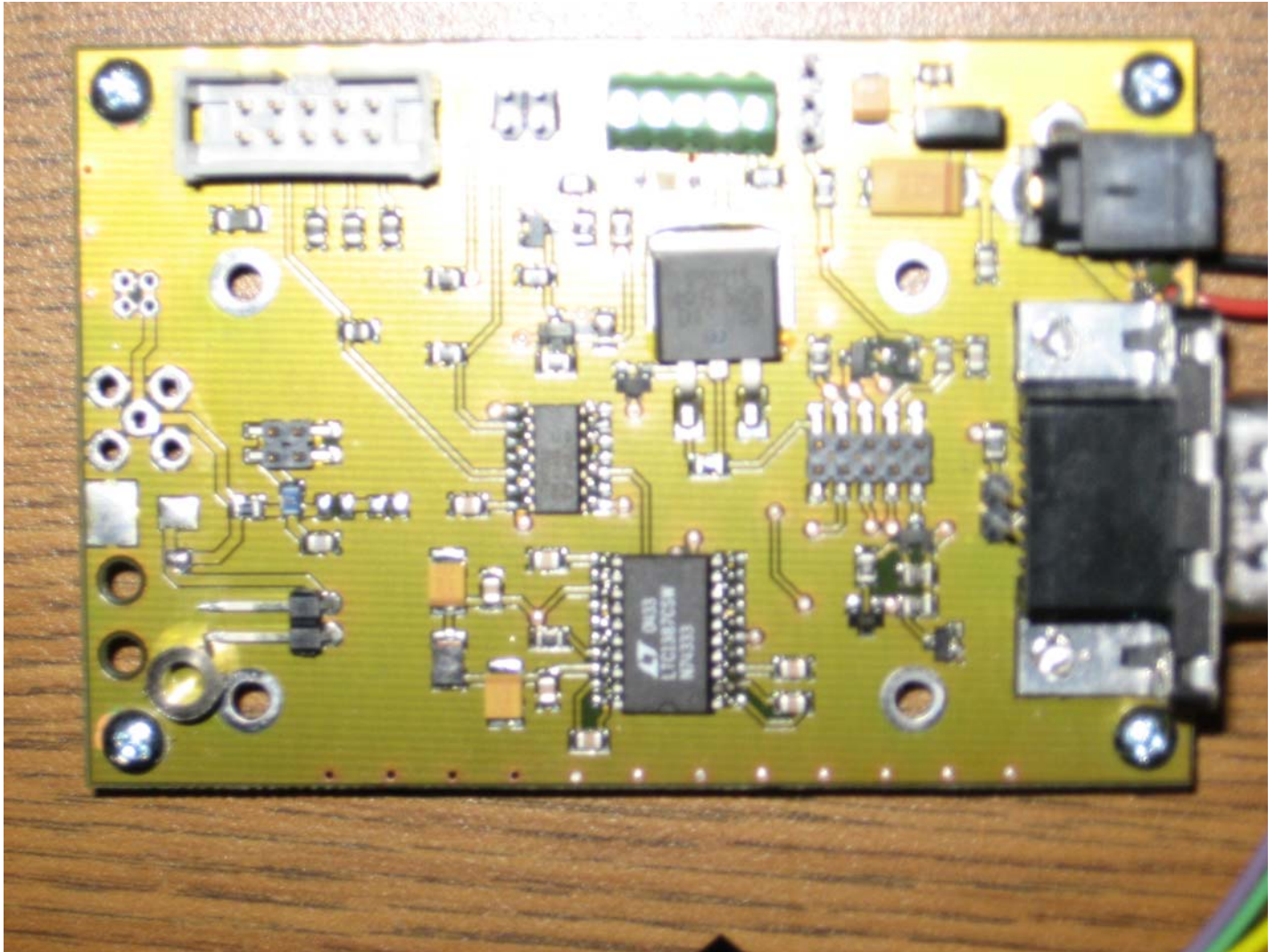
Company: Northern Apex
Model: Laboratory Water Filter Reader
FCC ID: RIN-A1479
IC: 7138A-A1479
Date: 5/9/07
Photo Description: RF Module – Main “Mother” Board - Top



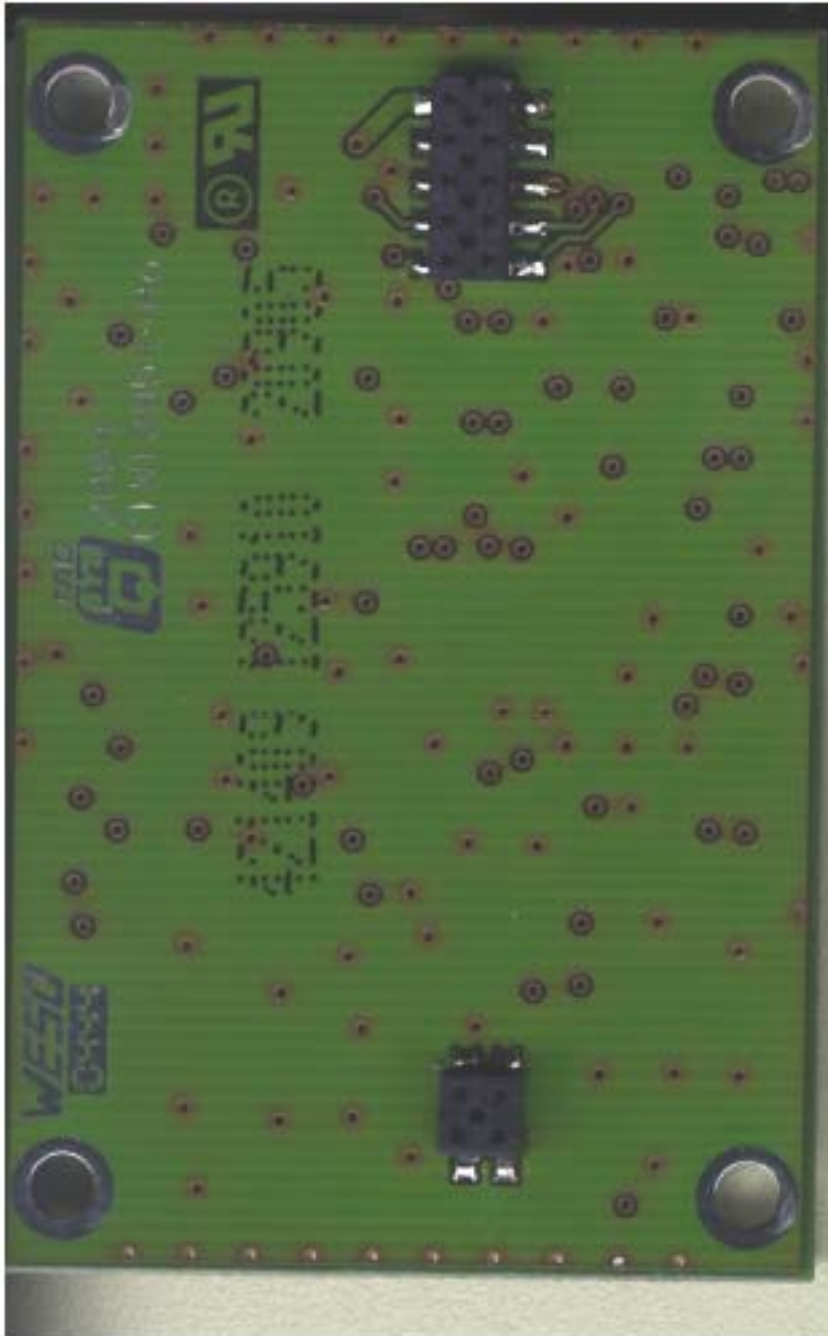
Company: Northern Apex
Model: Laboratory Water Filter Reader
FCC ID: RIN-A1479
IC: 7138A-A1479
Date: 5/9/07
Photo Description: RF Module – Main “Mother” Board - Top



Company: Northern Apex
Model: Laboratory Water Filter Reader
FCC ID: RIN-A1479
IC: 7138A-A1479
Date: 5/9/07
Photo Description: RF Module – Main “Mother” Board - Top



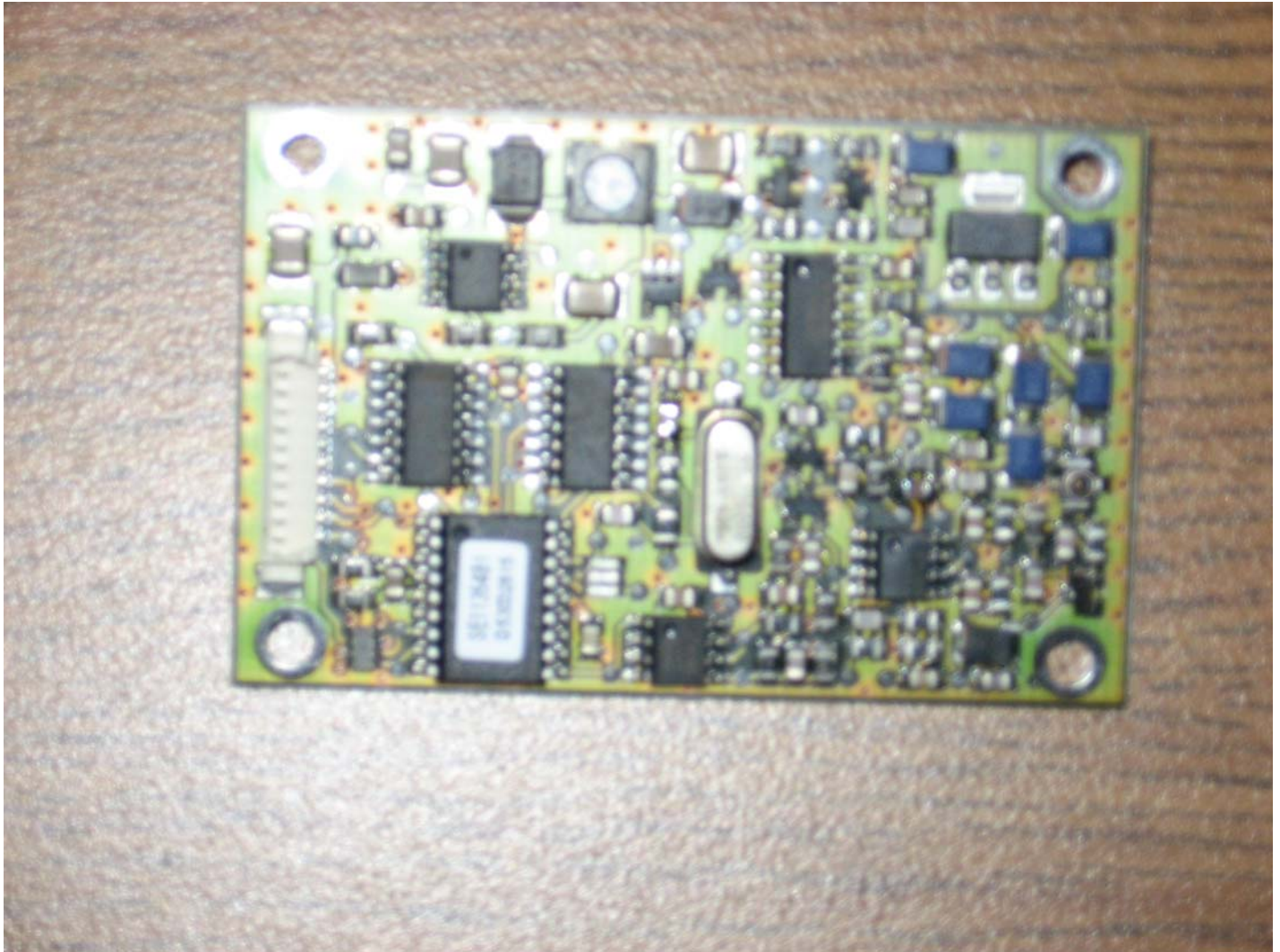
Company: Northern Apex
Model: Laboratory Water Filter Reader
FCC ID: RIN-A1479
IC: 7138A-A1479
Date: 5/9/07
Photo Description: RF daughter board – bottom



Company: Northern Apex
Model: Laboratory Water Filter Reader
FCC ID: RIN-A1479
IC: 7138A-A1479
Date: 5/9/07
Photo Description: RF Daughter Board – Top



Company: Northern Apex
Model: Laboratory Water Filter Reader
FCC ID: RIN-A1479
IC: 7138A-A1479
Date: 5/9/07
Photo Description: RF Daughter Board – Top



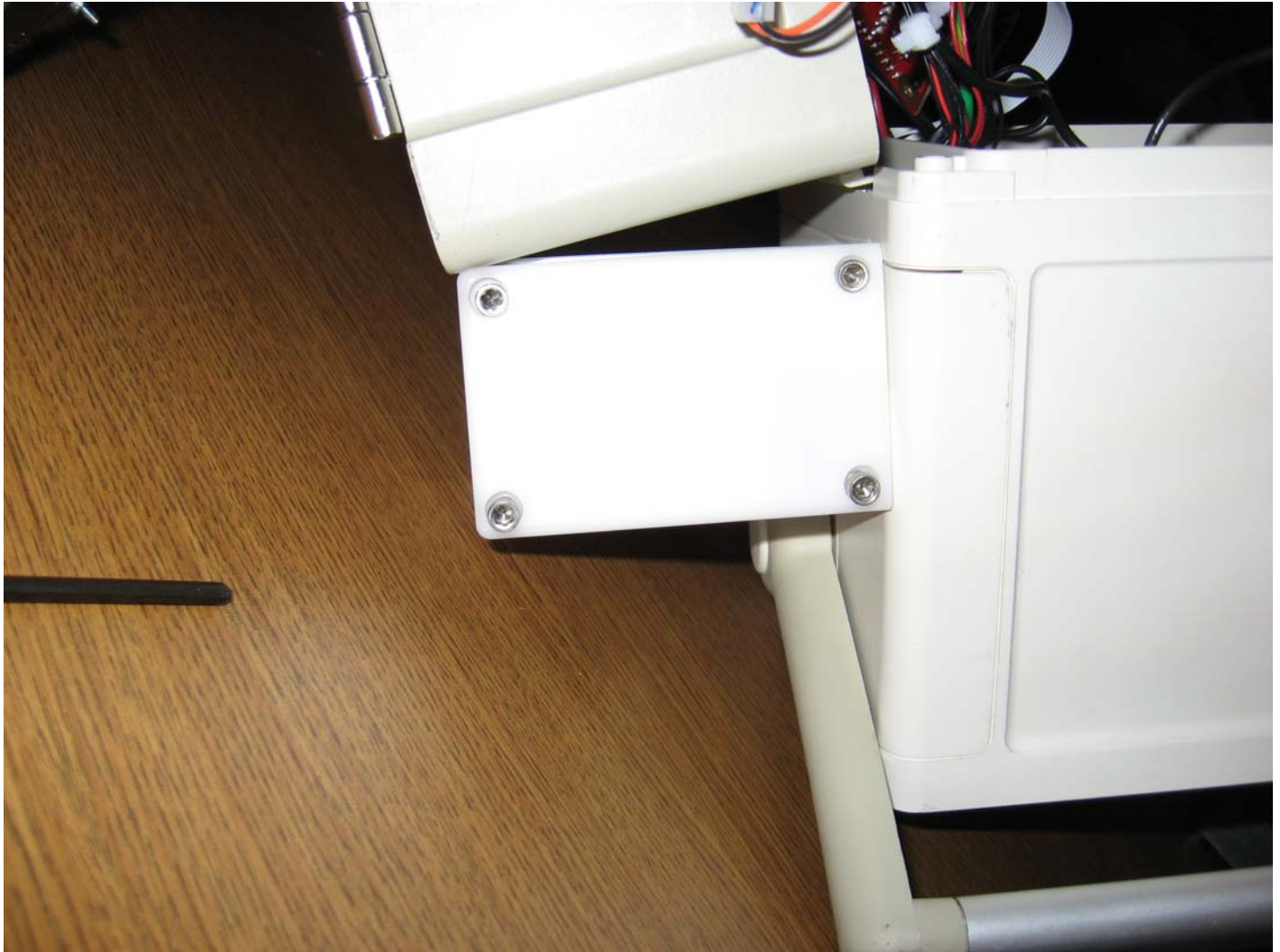
Company: Northern Apex
Model: Laboratory Water Filter Reader
FCC ID: RIN-A1479
IC: 7138A-A1479
Date: 5/9/07
Photo Description: Passive RFID Tag



Company: Northern Apex
Model: Laboratory Water Filter Reader
FCC ID: RIN-A1479
IC: 7138A-A1479
Date: 5/9/07
Photo Description: Passive RFID Tag



Company: Northern Apex
Model: Laboratory Water Filter Reader
FCC ID: RIN-A1479
IC: 7138A-A1479
Date: 5/9/07
Photo Description: RFID Tag Reader Assembly – bottom



Company: Northern Apex

Model: Laboratory Water Filter Reader

FCC ID: RIN-A1479

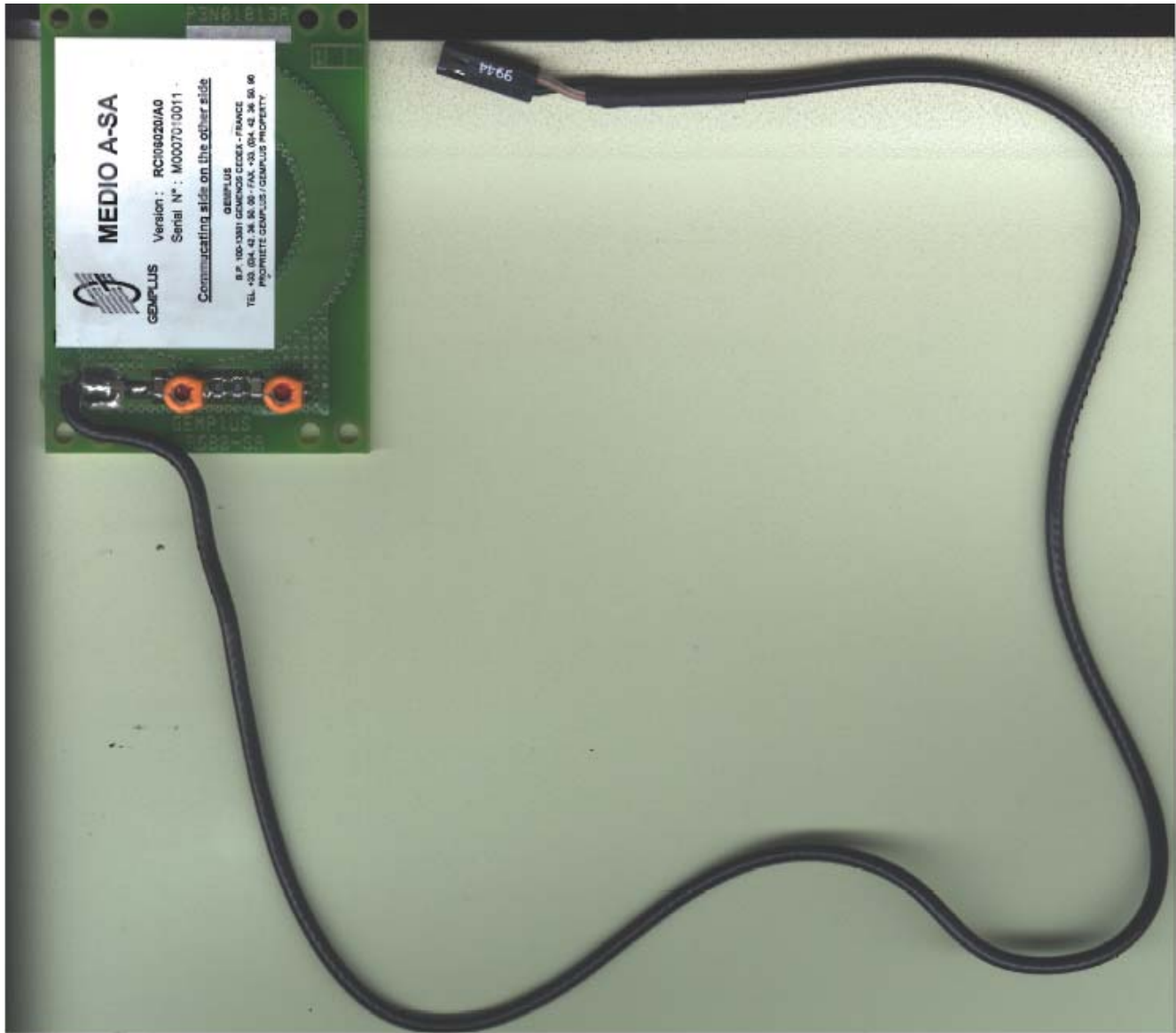
IC: 7138A-A1479

Date: 5/9/07

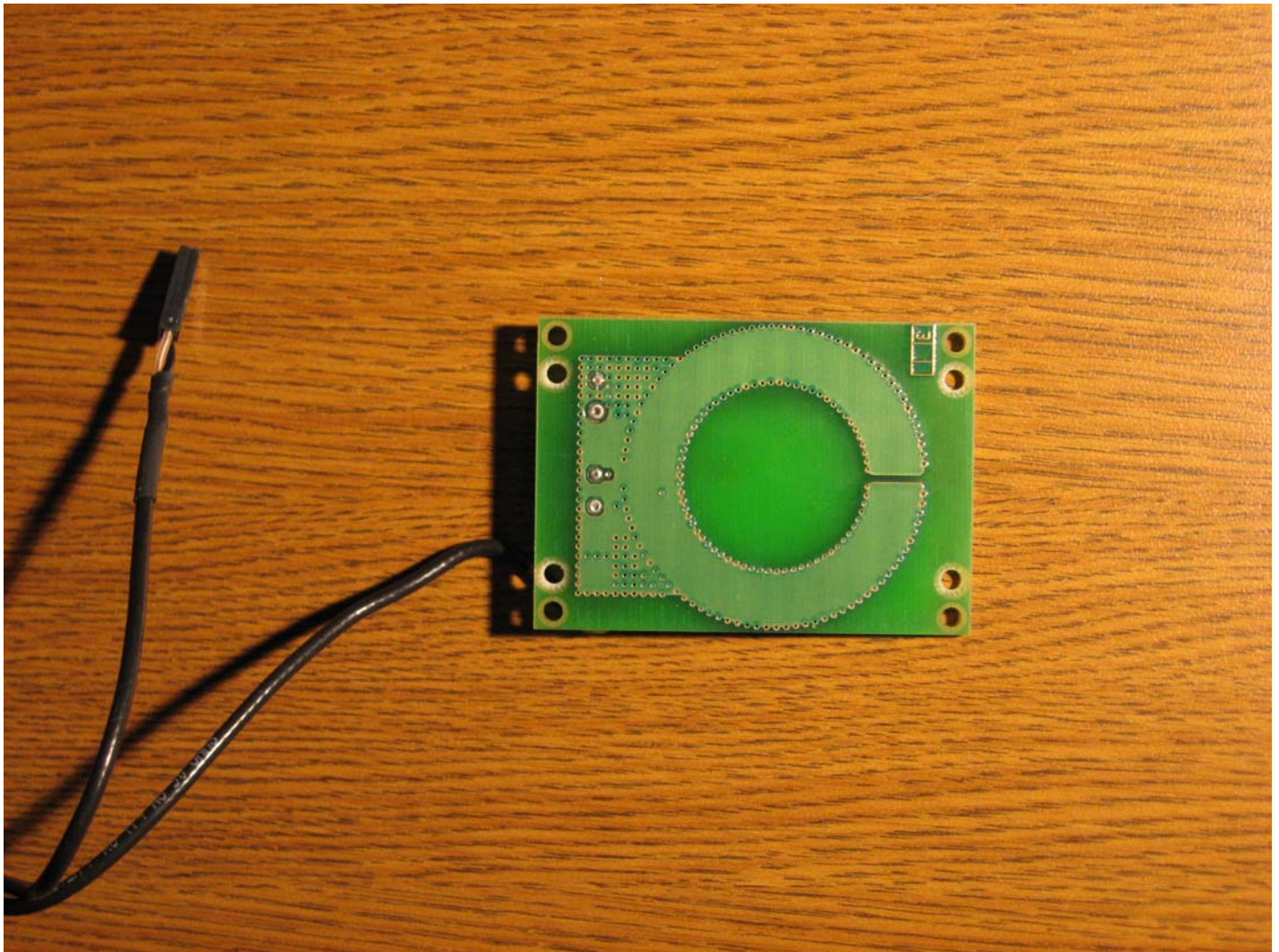
Photo Description: RFID Tag Reader Assembly – bottom. Cover removed to show antenna location



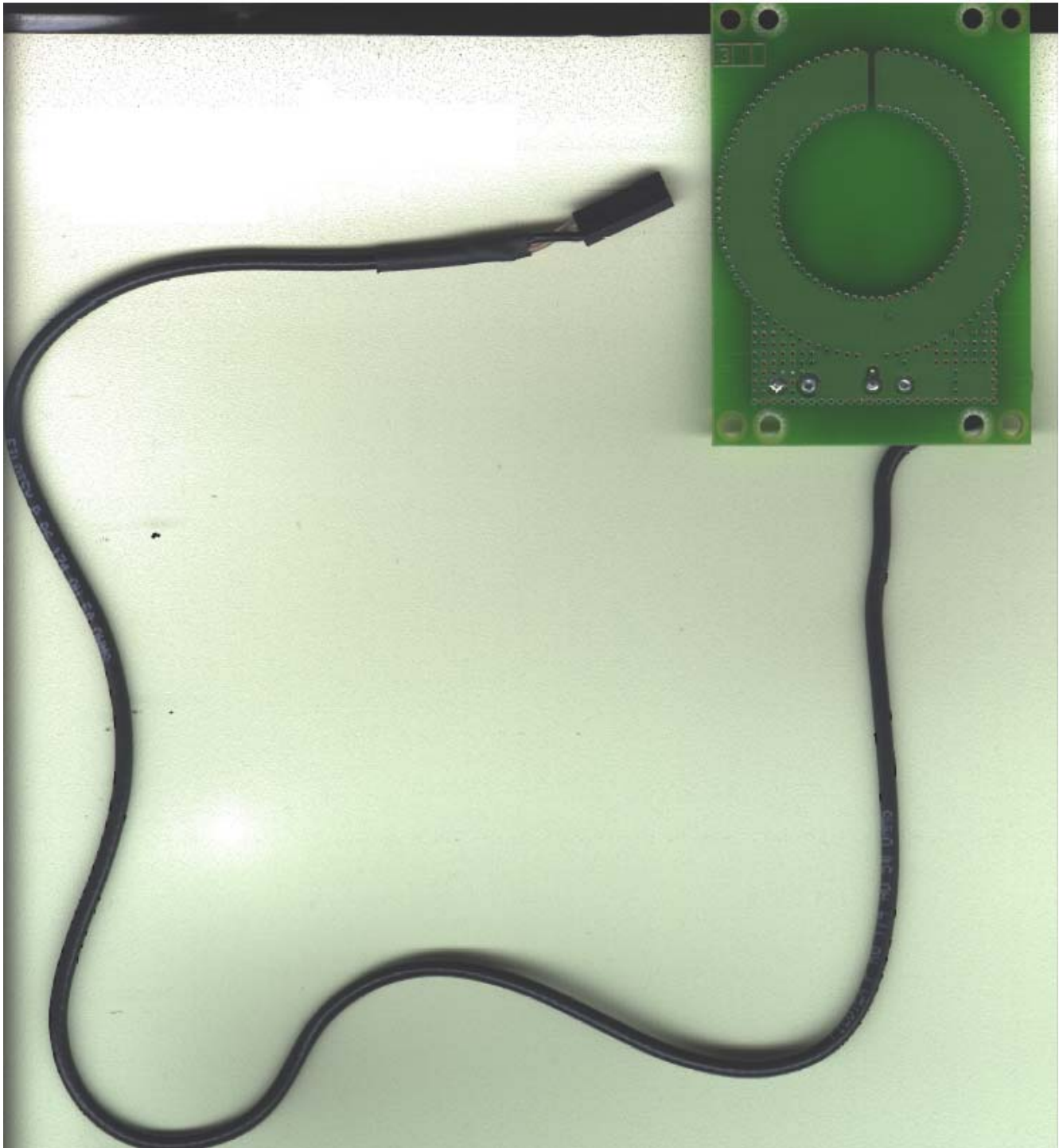
Company: Northern Apex
Model: Laboratory Water Filter Reader
FCC ID: RIN-A1479
IC: 7138A-A1479
Date: 5/9/07
Photo Description: RFID Antenna - bottom



Company: Northern Apex
Model: Laboratory Water Filter Reader
FCC ID: RIN-A1479
IC: 7138A-A1479
Date: 5/9/07
Photo Description: RFID Antenna - Top



Company: Northern Apex
Model: Laboratory Water Filter Reader
FCC ID: RIN-A1479
IC: 7138A-A1479
Date: 5/9/07
Photo Description: RFID Antenna - Top



Company: Northern Apex

Model: Laboratory Water Filter Reader

FCC ID: RIN-A1479

IC: 7138A-A1479

Date: 5/9/07

Photo Description: Front half of EUT housing inside, showing location where RF Module is located

